

## Demographic Profile Albion Area Public Library

**Population Growth:** The total population of the Albion Area Public Library service area decreased by -5.7 percent over the past decade to 1,516; this decline rate was lower than the statewide rate of 3.4 percent.

**Age and Sex:** In 2010, the Albion Area Public Library service area had a total population of 1,516 - 699 males (46.1 percent) and 817 females (53.9 percent). The age structure of the population in 2010 was as follows: 27.0 percent of the population was under 20 years old, 55.5 percent was 20 to 64 years old and 17.4 percent was 65 years or older.

**Race and Ethnicity:** For people reporting one race alone, not of Hispanic ethnicity, 95.6 percent were White; .9 percent were Black or African American; 1.6 percent were Other Race Alone.<sup>1</sup> A total of 27 or 1.8 percent of the population were Hispanic.<sup>2</sup>

**Households:** In 2010, there were 646 households in the Albion Area Public Library service area. The average household size was 2.35 people. Families made up 61.5 percent of the households. This figure includes both families with (27.6 percent) and without (33.9 percent) children. Of families with children less than 18 years old, 17.6 percent were married-couple families, 8.0 percent were female householder families with no husband present, and the remaining (1.9 percent) were male-headed households with no wife present.

**Education:** The educational attainment of the population 25 years and over was lower in the Albion Area Public Library service area than in Pennsylvania. During the period 2008-2012, 13.7 percent of residents had earned a Bachelor's degree or higher, compared with 27.0 percent statewide. A total of 111 or 10.1 percent had not completed high school, compared with 11.7 percent for the commonwealth as a whole.

**Income and Poverty:** Households with incomes of \$50,000 to \$74,999 (29.5 percent) made up the largest percent of households in the Albion Area Public Library service area in 2008-2012. For comparison, 18.7 percent of commonwealth households were in this range during the period.

In 2008-2012, the overall poverty rate for the Albion Area Public Library service area was higher than Pennsylvania (14.5 percent compared to 13.1 percent). The poverty rate for the population under 18 years of age was 27.0 percent, compared with 13.3 percent of people 18 to 64 years and 5.5 percent for those aged 65 years and over. A total of 41 or 10.1 percent of all families had incomes below poverty level. In 2008-2012, 26.0 percent of families with related children and 66.7 percent of families with a female householder and no husband with related children present had incomes below the poverty level.

**Class of Worker and Occupation:** In 2008-2012, 83.7 percent of the workforce was private wage and salary workers; 12.9 percent were federal, state, or local government workers; and 3.4 percent were self-employed in their own (not incorporated) business.

The top occupation group for the civilian employed population 16 years and over in the Albion Area Public Library service area in 2008-2012 was Sales and office (30.4 percent).

---

<sup>1</sup> Other race includes those who identified themselves as American Indian/Alaska Native, Asian, Native Hawaiian/Other Pacific Islander, Some Other Race and Two or More Races on the 2010 Census form.

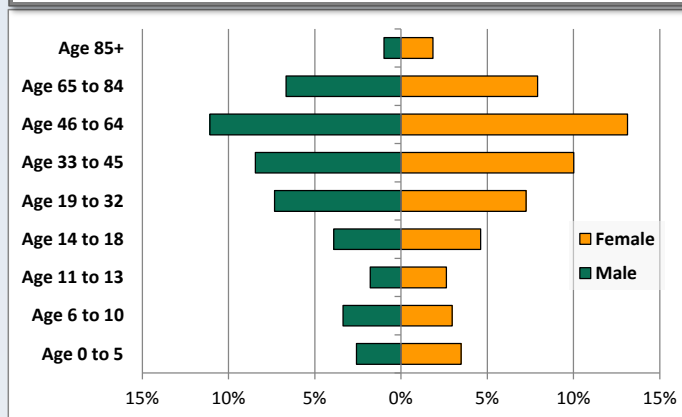
<sup>2</sup> People of Hispanic origin may be of any race.

# Demographic Profile

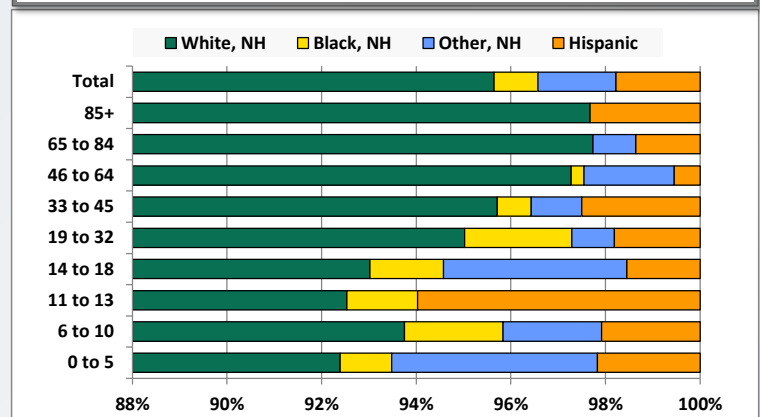
Albion Area Public Library

Key Indicators		
	2000	2010
<b>Population Growth</b>		
Total Population	1,607	1,516
10-Year Growth	N/A	-5.7%
<b>Diversity</b>		
White Alone, Non-Hispanic	97.4%	95.6%
Black Alone, Non-Hispanic	0.5%	0.9%
Other Race Alone, Non-Hispanic	0.9%	1.6%
Percent Hispanic	1.2%	1.8%
<b>Aging</b>		
Percent 65 Years and Over	14.2%	17.4%
<b>Households</b>		
Percent Married Couple with Own Children	23.4%	17.6%
Percent Living Alone	30.2%	32.7%

Population by Library-Defined Age Group, 2010



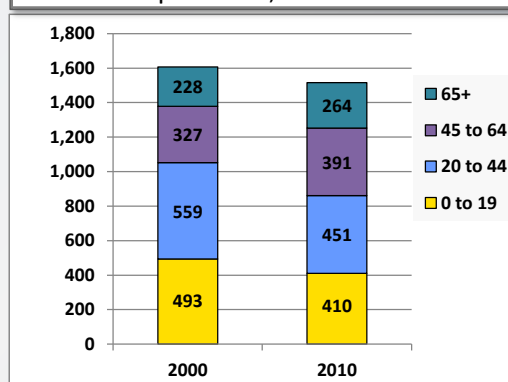
Race/Ethnicity by Library-Defined Age Group, 2010



Population Growth by Library-Defined Age Group, 2000 to 2010

Age Group	2010	Change	
		Numeric	Percent
Total	1,516	-91	-5.7%
85+	43	22	104.8%
65 to 84	221	14	6.8%
46 to 64	367	66	21.9%
33 to 45	280	-55	-16.4%
19 to 32	221	-40	-15.3%
14 to 18	129	-4	-3.0%
11 to 13	67	-20	-23.0%
6 to 10	96	-55	-36.4%
0 to 5	92	-19	-17.1%

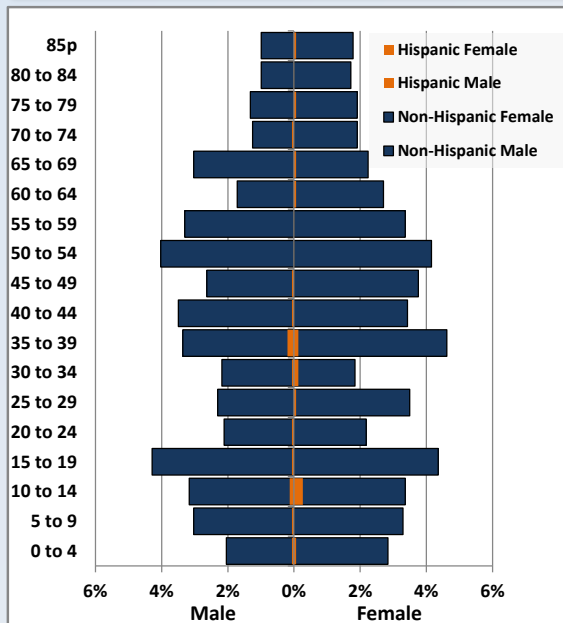
Population Total, 2000 and 2010



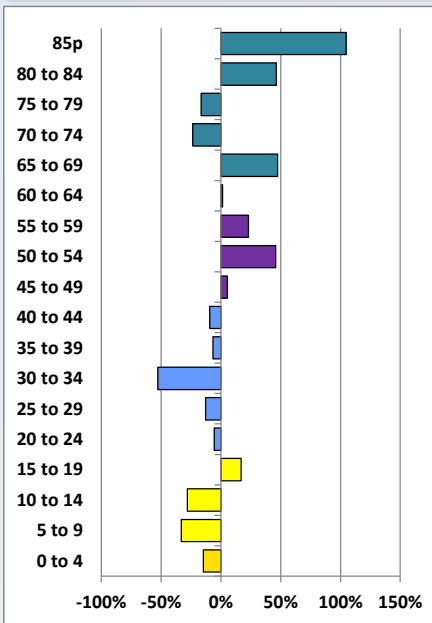
# Demographic Profile

Albion Area Public Library

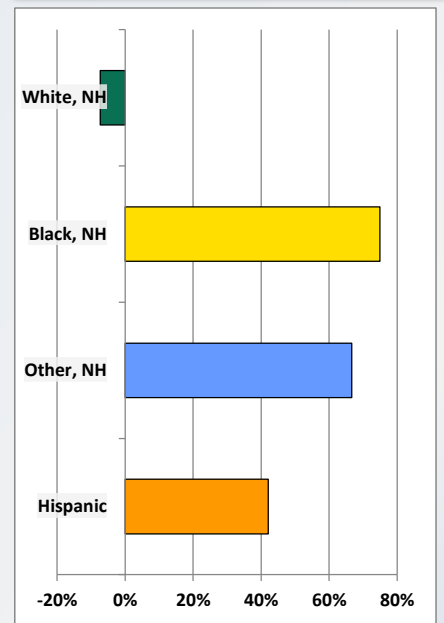
Population by 5-Year Age Cohorts



Pop Change by Age, 2000 to 2010

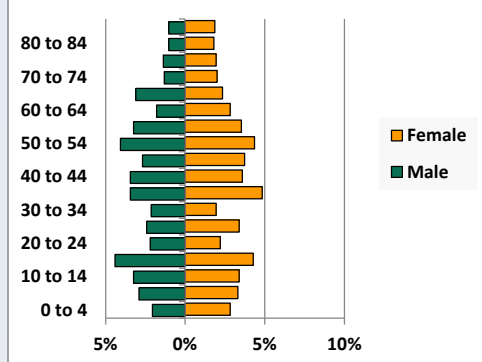


Pop Change by Race/Ethnicity, 2000 to 2010

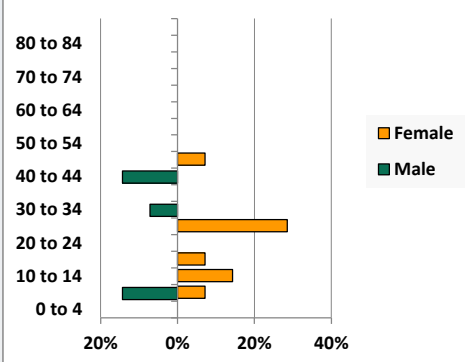


Population by Age, Race and Ethnicity 2010

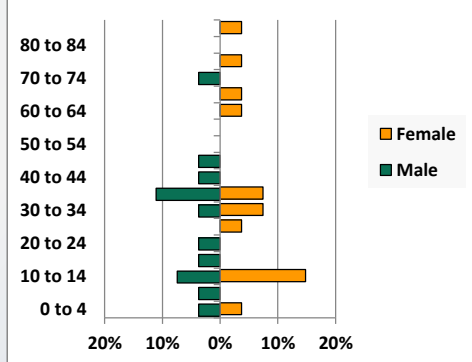
White, Not Hispanic



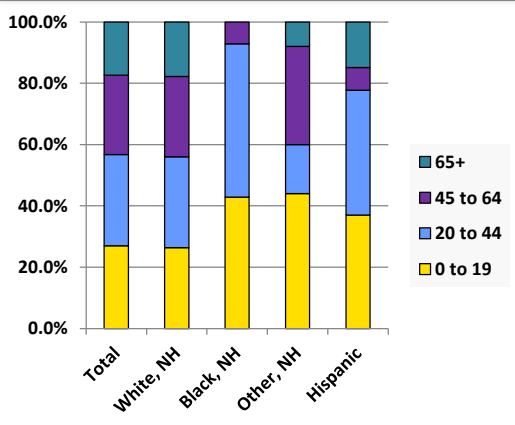
Black, Non-Hispanic



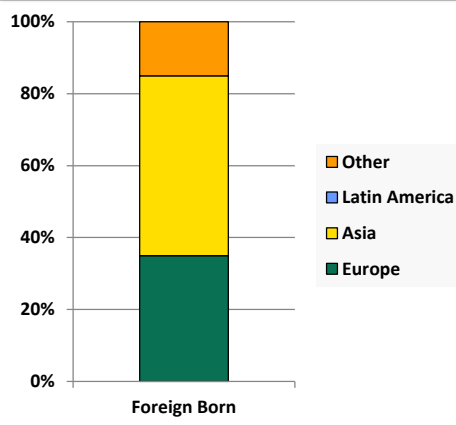
Hispanic



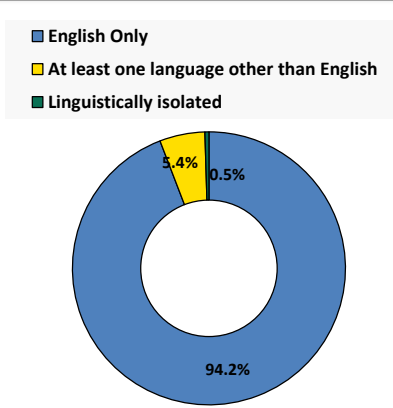
Age by Race and Ethnicity, 2010



Foreign Born, 2010



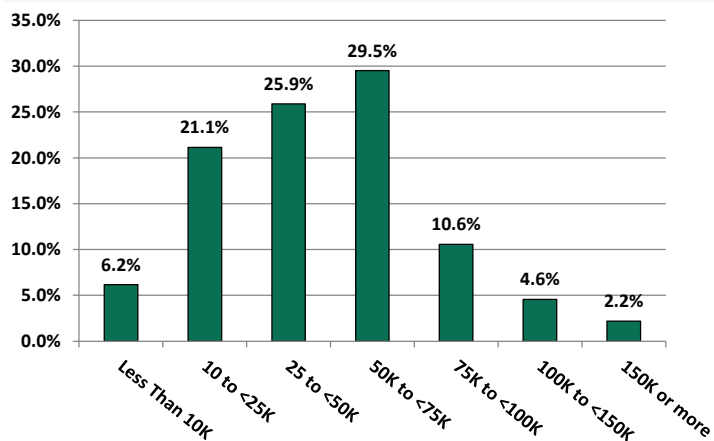
Household Language, 2010



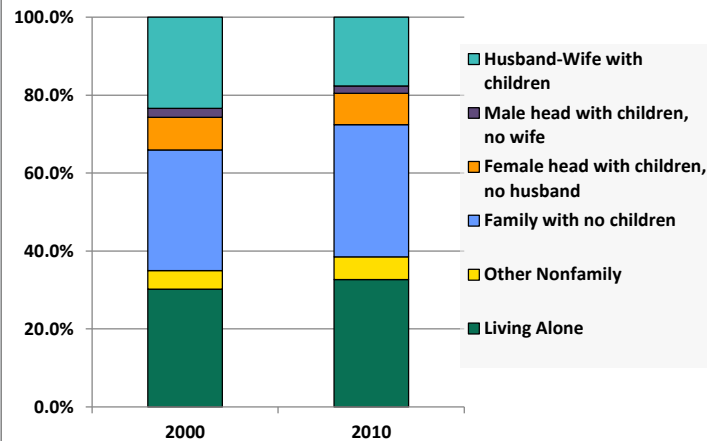
# Demographic Profile

Albion Area Public Library

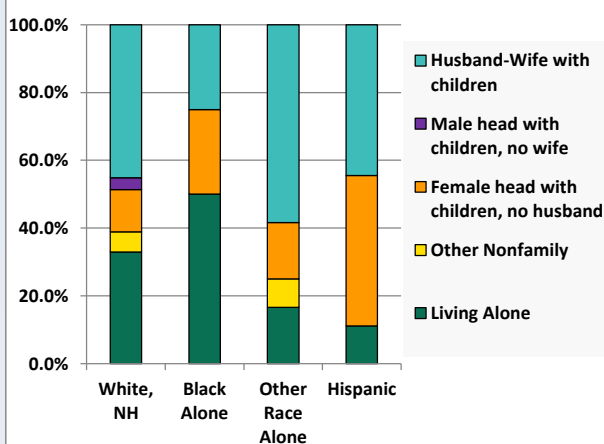
Household Income Distribution, 2008-2012



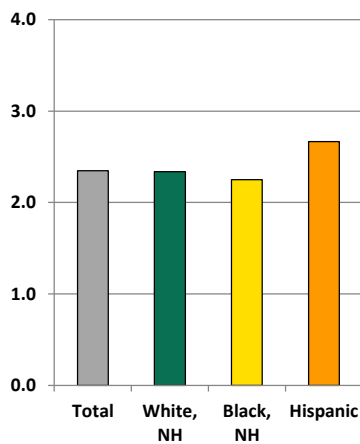
Household Type, 2000 and 2010



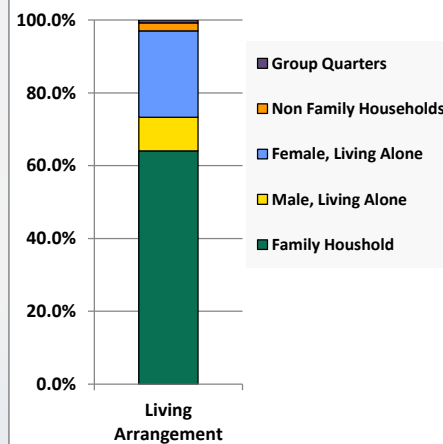
Household Type by Race/Ethnicity, 2010



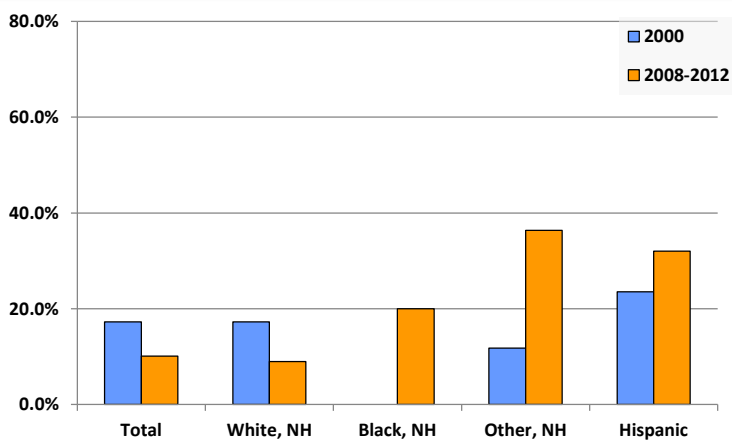
Average Household Size, 2010



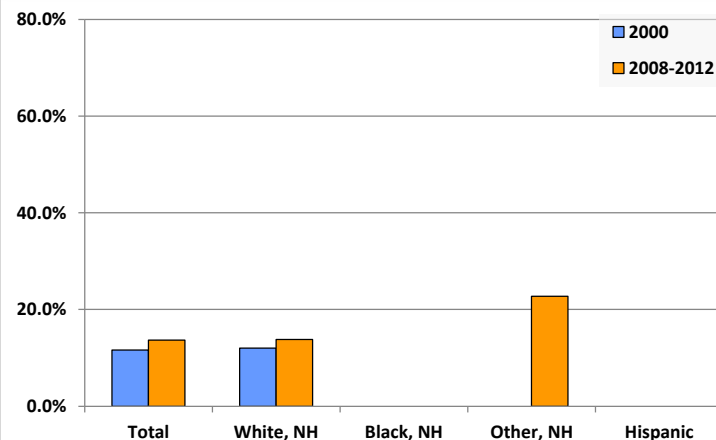
Living Arrangements 65+, 2008-2012



Percent of Adults that Did Not Complete High School



Percent of Adults Who Attained a Bachelor's Degree or Higher



# Reference Data

## Albion Area Public Library

	Total Population	White, Non- Hispanic	Black, Non- Hispanic	Other, Non- Hispanic	Detail for Other, Non-Hispanic					Hispanic or Latino
					AIAN	Asian	NHOPI	Some Other Race	Two or More Races	
A. Total Population										
2000 Total	1,607	1,565	8	15	4	6	0	0	5	19
2000 pct of Total	100.0%	97.4%	0.5%	0.9%	0.2%	0.4%	0.0%	0.0%	0.3%	1.2%
2010 Total	1,516	1,450	14	25	5	1	0	0	19	27
2010 pct of Total	100.0%	95.6%	0.9%	1.6%	0.3%	0.1%	0.0%	0.0%	1.3%	1.8%
B. Population by Major Age Groups by Race and Ethnicity										
2000										
0-19	493	480	6	2	0	1	0	0	1	5
20-64	886	858	2	13	4	5	0	0	4	13
65+	228	227	0	0	0	0	0	0	0	1
85+	21	21	0	0	0	0	0	0	0	0
2010										
0-19	410	383	6	11	0	0	0	0	11	10
20-64	842	809	8	12	4	1	0	0	7	13
65+	264	258	0	2	1	0	0	0	1	4
85+	43	42	0	0	0	0	0	0	0	1
C. Age Mix for Each Racial and Ethnic Group										
2000										
0-19	30.7%	30.7%	75.0%	13.3%	0.0%	16.7%	0.0%	0.0%	20.0%	26.3%
20-64	55.1%	54.8%	25.0%	86.7%	100.0%	83.3%	0.0%	0.0%	80.0%	68.4%
65+	14.2%	14.5%	0.0%	0.0%	0.0%	0.0%	0.0%	0.0%	0.0%	5.3%
85+	1.3%	1.3%	0.0%	0.0%	0.0%	0.0%	0.0%	0.0%	0.0%	0.0%
2010										
0-19	27.0%	26.4%	42.9%	44.0%	0.0%	0.0%	0.0%	0.0%	57.9%	37.0%
20-64	55.5%	55.8%	57.1%	48.0%	80.0%	100.0%	0.0%	0.0%	36.8%	48.1%
65+	17.4%	17.8%	0.0%	8.0%	20.0%	0.0%	0.0%	0.0%	5.3%	14.8%
85+	2.8%	2.9%	0.0%	0.0%	0.0%	0.0%	0.0%	0.0%	0.0%	3.7%
D. Racial and Ethnic Composition of Each Age Group										
2000										
0-19	100.0%	97.4%	1.2%	0.4%	0.0%	0.2%	0.0%	0.0%	0.2%	1.0%
20-64	100.0%	96.8%	0.2%	1.5%	0.5%	0.6%	0.0%	0.0%	0.5%	1.5%
65+	100.0%	99.6%	0.0%	0.0%	0.0%	0.0%	0.0%	0.0%	0.0%	0.4%
85+	100.0%	100.0%	0.0%	0.0%	0.0%	0.0%	0.0%	0.0%	0.0%	0.0%
2010										
0-19	100.0%	93.4%	1.5%	2.7%	0.0%	0.0%	0.0%	0.0%	2.7%	2.4%
20-64	100.0%	96.1%	1.0%	1.4%	0.5%	0.1%	0.0%	0.0%	0.8%	1.5%
65+	100.0%	97.7%	0.0%	0.8%	0.4%	0.0%	0.0%	0.0%	0.4%	1.5%
85+	100.0%	97.7%	0.0%	0.0%	0.0%	0.0%	0.0%	0.0%	0.0%	2.3%
E. Population Growth										
2000-2010, Change										
0-19	-83	-97	0	9	0	-1	0	0	10	5
20-64	-44	-49	6	-1	0	-4	0	0	3	0
65+	36	31	0	2	1	0	0	0	1	3
85+	22	21	0	0	0	0	0	0	0	1
Total	-91	-115	6	10	1	-5	0	0	14	8
2000-2010, Pct Change										
0-19	-16.8%	-20.2%	0.0%	450.0%	0.0%	-100.0%	0.0%	0.0%	1000.0%	100.0%
20-64	-5.0%	-5.7%	300.0%	-7.7%	0.0%	-80.0%	0.0%	0.0%	75.0%	0.0%
65+	15.8%	13.7%	0.0%	0.0%	0.0%	0.0%	0.0%	0.0%	0.0%	300.0%
85+	104.8%	100.0%	0.0%	0.0%	0.0%	0.0%	0.0%	0.0%	0.0%	0.0%
Total	-5.7%	-7.3%	75.0%	66.7%	25.0%	-83.3%	0.0%	0.0%	280.0%	42.1%

Source: Decennial Census 2010, 2000, American Community Survey 2008-2012

Prepared for the Pennsylvania State Library by The Pennsylvania State Data Center, 9/2014

# Reference Data

## Albion Area Public Library

	Total Population	White, Non- Hispanic	Black, Non- Hispanic	Other, Non- Hispanic	Detail for Other, Non-Hispanic					Hispanic or Latino	
					AIAN	Asian	NHOPI	Some Other Race	Two or More Races		
F. Population by Library-Defined Age Groups, 2010											
0-5	92	85	1	4	0	0	0	0	4	2	
6-10	96	90	2	2	0	0	0	0	2	2	
11-13	67	62	1	0	0	0	0	0	0	4	
14-18	129	120	2	5	0	0	0	0	5	2	
19-32	221	210	5	2	0	0	0	0	2	4	
33-45	280	268	2	3	1	0	0	0	2	7	
46-64	367	357	1	7	3	1	0	0	3	2	
65-84	221	216	0	2	1	0	0	0	1	3	
85+	43	42	0	0	0	0	0	0	0	1	
Total	1,516	1,450	14	25	5	1	0	0	19	27	
G. Population by 5-Year Age Cohorts, 2010											
0-4	76	71	0	3	0	0	0	0	3	2	
5-9	97	90	3	3	0	0	0	0	3	1	
10-14	105	96	2	1	0	0	0	0	1	6	
15-19	132	126	1	4	0	0	0	0	4	1	
20-24	66	64	0	1	0	0	0	0	1	1	
25-29	89	84	4	0	0	0	0	0	0	1	
30-34	64	59	1	1	0	0	0	0	1	3	
35-39	126	120	0	1	0	0	0	0	1	5	
40-44	106	102	2	1	1	0	0	0	0	1	
45-49	98	93	1	3	1	1	0	0	1	1	
50-54	124	122	0	2	1	0	0	0	1	0	
55-59	101	98	0	3	1	0	0	0	2	0	
60-64	68	67	0	0	0	0	0	0	0	1	
65-69	81	79	0	1	0	0	0	0	1	1	
70-74	49	48	0	0	0	0	0	0	0	1	
75-79	50	48	0	1	1	0	0	0	0	1	
80-84	41	41	0	0	0	0	0	0	0	0	
85-89	30	29	0	0	0	0	0	0	0	1	
90-94	12	12	0	0	0	0	0	0	0	0	
95-99	1	1	0	0	0	0	0	0	0	0	
100+	0	0	0	0	0	0	0	0	0	0	
Total	1,516	1,450	14	25	5	1	0	0	19	27	

Source: Decennial Census 2010, 2000, American Community Survey 2008-2012

Prepared for the Pennsylvania State Library by The Pennsylvania State Data Center, 9/2014

# Reference Data

## Albion Area Public Library

### H. Income Distribution, 2008-2012

Range (in thousands)	Households	Pct of Total
<\$10K	39	6.2%
\$10K to <\$25K	134	21.1%
\$25K to <\$50K	164	25.9%
\$50K to <\$75K	187	29.5%
\$75K to <\$100K	67	10.6%
\$100K to <\$150K	29	4.6%
\$150K+	14	2.2%

### I. Household Type, 2010

Household Type	2000	2000pct	2010	2010pct
Total Households	655	100.0%	646	100.0%
Family Households	426	65.0%	397	61.5%
Husband-wife, no children w/children	153	23.4%	114	17.6%
Female head, no husband, w/ children	55	8.4%	52	8.0%
Male head, no wife, w/ children	15	2.3%	12	1.9%
Without children	203	31.0%	219	33.9%
Nonfamily households	229	35.0%	249	38.5%
Living alone	198	30.2%	211	32.7%
Other nonfamily	31	4.7%	38	5.9%

### J. Household Type by Race and Ethnicity, 2008-2012

Household Type	White, NH	Black, NH	Other, NH	Hispanic
Total Households	625	4	12	9
Husband wife family	45.1%	25.0%	58.3%	44.4%
Family with male head, no wife	3.5%	0.0%	0.0%	0.0%
family with female head, no husband	12.5%	25.0%	16.7%	44.4%
Living alone	33.0%	50.0%	16.7%	11.1%
Other nonfamily	5.9%	0.0%	8.3%	0.0%

### K. Poverty, 2008-2012

Families	Poverty	PA
All families	10.1%	9.1%
Families w/ related children	26.0%	15.3%
Female householder, no husband present	44.1%	28.8%
Female householder, no husband present, w/ related children	66.7%	39.2%
All people	14.5%	13.1%
Under 18 years	27.0%	18.4%
18 to 64 years	13.3%	12.3%
65 years and over	5.5%	8.4%

### L. Educational Attainment by Race and Ethnicity, 2008-2012

Education Level	White, NH	Black	Other	Hispanic	Total
Population 25 years and over	1,051	5	22	25	1,096
Less than high school	8.9%	20.0%	36%	32.0%	10.1%
High school graduate (includes equivalency	50.9%	0.0%	23%	52.0%	50.2%
Some college or associates degree	26.4%	80.0%	18%	16.0%	26.0%
Bachelors degree or higher	13.8%	0.0%	23%	0.0%	13.7%

### M. Occupation, 2008-2012

Occupation	Estimate	Percent
Civilian population age 16 years and over	681	100.0%
Management, professional, and related occupations	130	19.1%
Service occupations	110	16.2%
Sales and office occupations	207	30.4%
Farming, fishing, and forestry occupations	3	0.4%
Construction, extraction, maintenance, and repair occupations	77	11.3%
Production, transportation, and material moving occupations	154	22.6%

### N. Class of Worker, 2008-2012

Occupation	Estimate	Percent
Civilian population age 16 years and over	681	100.0%
Private, for profit, wage and salary employee	493	72.4%
Private, not for profit, wage and salary employee	61	9.0%
Private, for profit, wage and salary self-employed in own business	16	2.3%
Government workers	88	12.9%
Self-employed in own not incorporated business	23	3.4%
Unpaid family workers in family business	0	0.0%