

Demographic Profile Andrew Carnegie Free Library

Population Growth: The total population of the Andrew Carnegie Free Library service area decreased by -5.0 percent over the past decade to 7,972; this decline rate was lower than the statewide rate of 3.4 percent.

Age and Sex: In 2010, the Andrew Carnegie Free Library service area had a total population of 7,972 - 3,793 males (47.6 percent) and 4,179 females (52.4 percent). The age structure of the population in 2010 was as follows: 19.7 percent of the population was under 20 years old, 63.8 percent was 20 to 64 years old and 16.5 percent was 65 years or older.

Race and Ethnicity: For people reporting one race alone, not of Hispanic ethnicity, 86.7 percent were White; 7.3 percent were Black or African American; 4.4 percent were Other Race Alone.¹ A total of 130 or 1.6 percent of the population were Hispanic.²

Households: In 2010, there were 3,900 households in the Andrew Carnegie Free Library service area. The average household size was 2.04 people. Families made up 50.6 percent of the households. This figure includes both families with (19.7 percent) and without (30.8 percent) children. Of families with children less than 18 years old, 10.5 percent were married-couple families, 7.6 percent were female householder families with no husband present, and the remaining (1.7 percent) were male-headed households with no wife present.

Education: The educational attainment of the population 25 years and over was lower in the Andrew Carnegie Free Library service area than in Pennsylvania. During the period 2008-2012, 24.9 percent of residents had earned a Bachelor's degree or higher, compared with 27.0 percent statewide. A total of 366 or 6.2 percent had not completed high school, compared with 11.7 percent for the commonwealth as a whole.

Income and Poverty: Households with incomes of less than \$25,000 (30.7 percent) made up the largest percent of households in the Andrew Carnegie Free Library service area in 2008-2012. For comparison, 23.6 percent of commonwealth households were in this range during the period.

In 2008-2012, the overall poverty rate for the Andrew Carnegie Free Library service area was higher than Pennsylvania (20.2 percent compared to 13.1 percent). The poverty rate for the population under 18 years of age was 50.9 percent, compared with 14.1 percent of people 18 to 64 years and 12.1 percent for those aged 65 years and over. A total of 326 or 16.6 percent of all families had incomes below poverty level. In 2008-2012, 34.7 percent of families with related children and 57.9 percent of families with a female householder and no husband with related children present had incomes below the poverty level.

Class of Worker and Occupation: In 2008-2012, 89.8 percent of the workforce was private wage and salary workers; 7.0 percent were federal, state, or local government workers; and 3.2 percent were self-employed in their own (not incorporated) business.

The top occupation group for the civilian employed population 16 years and over in the Andrew Carnegie Free Library service area in 2008-2012 was Sales and office (35.4 percent).

¹ Other race includes those who identified themselves as American Indian/Alaska Native, Asian, Native Hawaiian/Other Pacific Islander, Some Other Race and Two or More Races on the 2010 Census form.

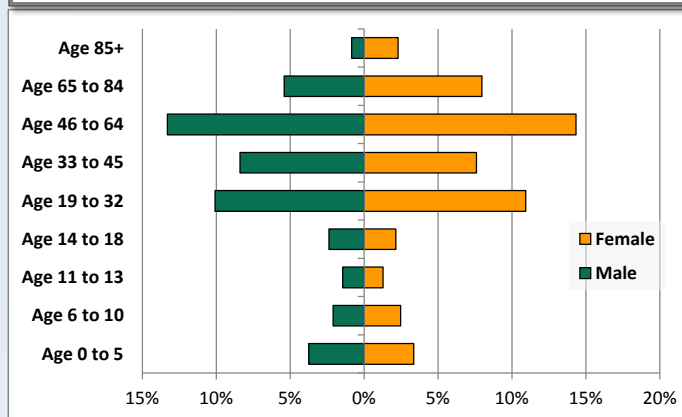
² People of Hispanic origin may be of any race.

Demographic Profile

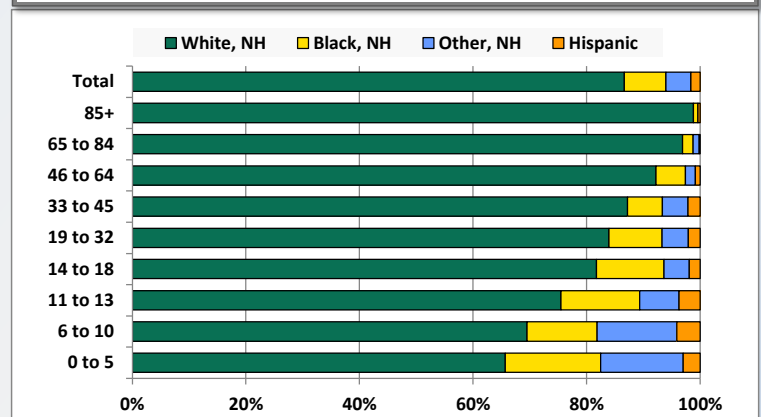
Andrew Carnegie Free Library

Key Indicators		
	2000	2010
Population Growth		
Total Population	8,389	7,972
10-Year Growth	N/A	-5.0%
Diversity		
White Alone, Non-Hispanic	90.7%	86.7%
Black Alone, Non-Hispanic	5.5%	7.3%
Other Race Alone, Non-Hispanic	2.9%	4.4%
Percent Hispanic	1.0%	1.6%
Aging		
Percent 65 Years and Over	20.1%	16.5%
Households		
Percent Married Couple with Own Children	14.3%	10.5%
Percent Living Alone	40.4%	41.3%

Population by Library-Defined Age Group, 2010



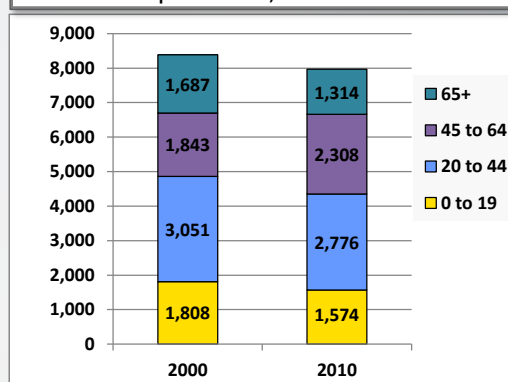
Race/Ethnicity by Library-Defined Age Group, 2010



Population Growth by Library-Defined Age Group, 2000 to 2010

Age Group	2010	Change	
		Numeric	Percent
Total	7,972	-417	-5.0%
85+	249	45	22.1%
65 to 84	1,065	-418	-28.2%
46 to 64	2,203	504	29.7%
33 to 45	1,274	-421	-24.8%
19 to 32	1,675	85	5.3%
14 to 18	361	-81	-18.3%
11 to 13	216	-45	-17.2%
6 to 10	364	-56	-13.3%
0 to 5	565	-30	-5.0%

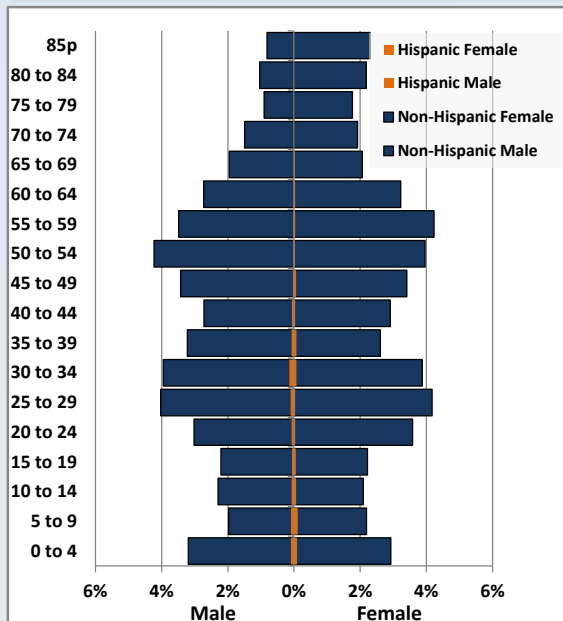
Population Total, 2000 and 2010



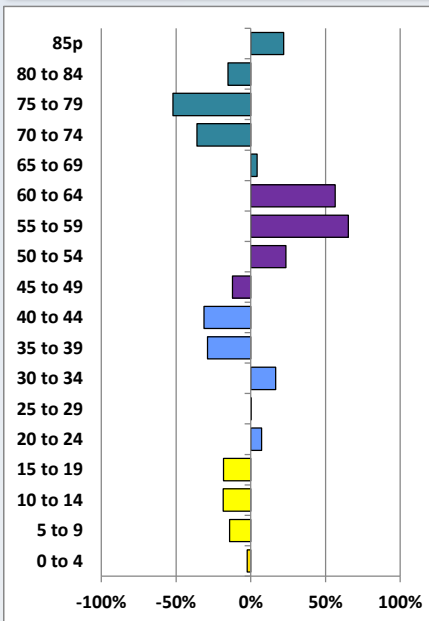
Demographic Profile

Andrew Carnegie Free Library

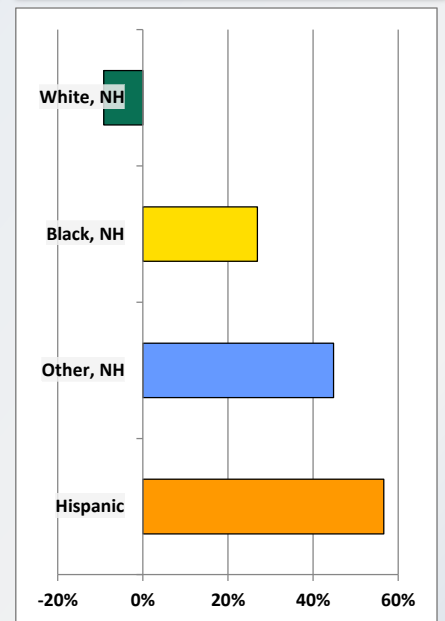
Population by 5-Year Age Cohorts



Pop Change by Age, 2000 to 2010

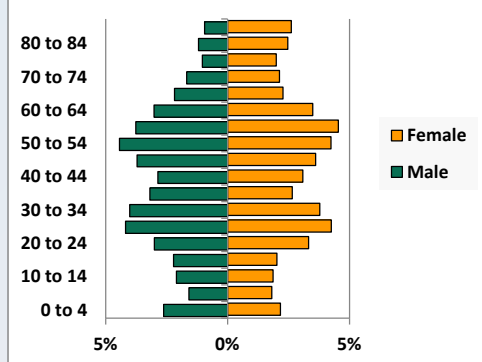


Pop Change by Race/Ethnicity, 2000 to 2010

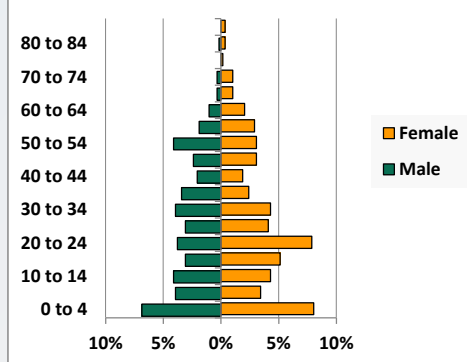


Population by Age, Race and Ethnicity 2010

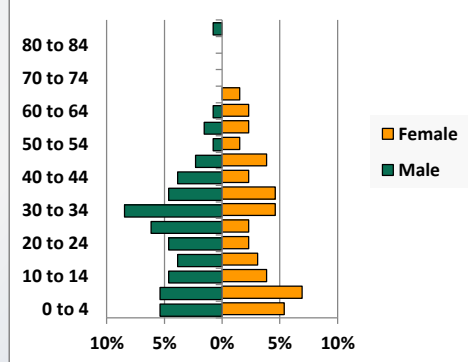
White, Not Hispanic



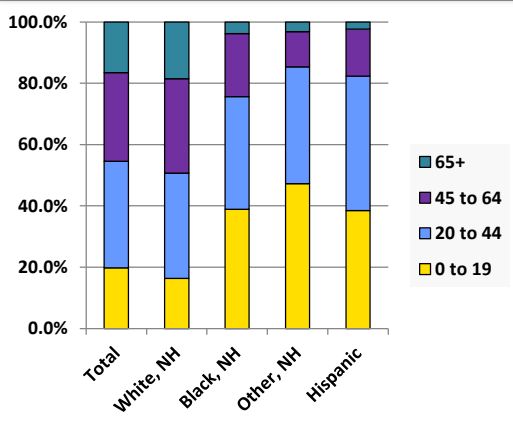
Black, Non-Hispanic



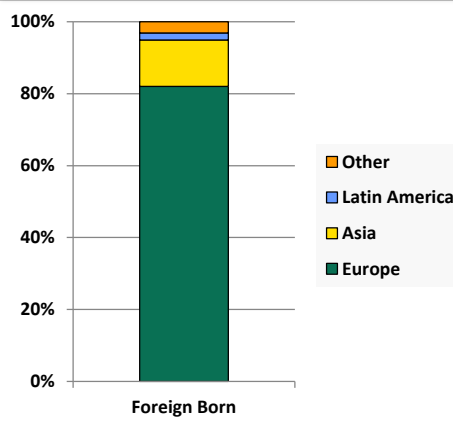
Hispanic



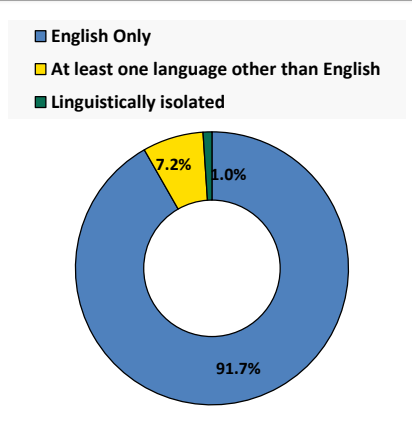
Age by Race and Ethnicity, 2010



Foreign Born, 2010



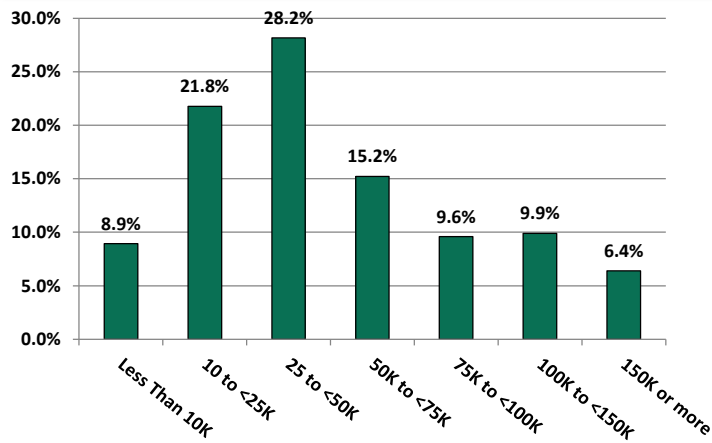
Household Language, 2010



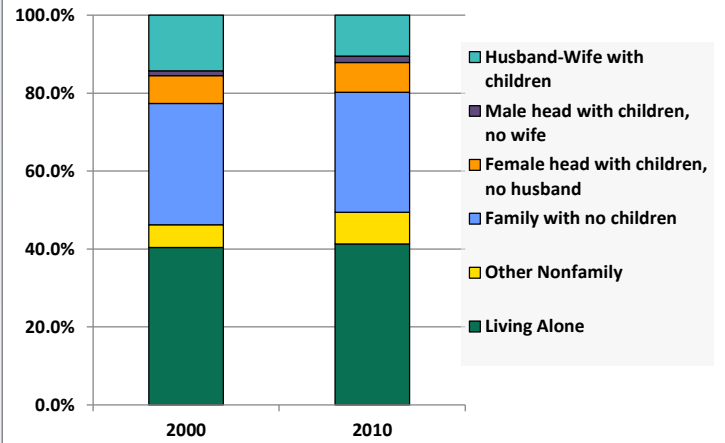
Demographic Profile

Andrew Carnegie Free Library

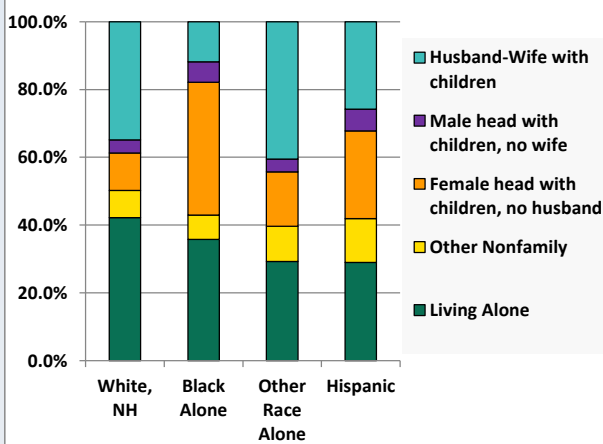
Household Income Distribution, 2008-2012



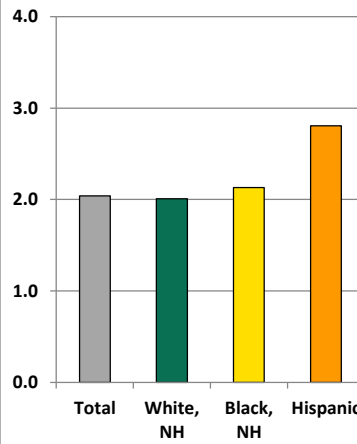
Household Type, 2000 and 2010



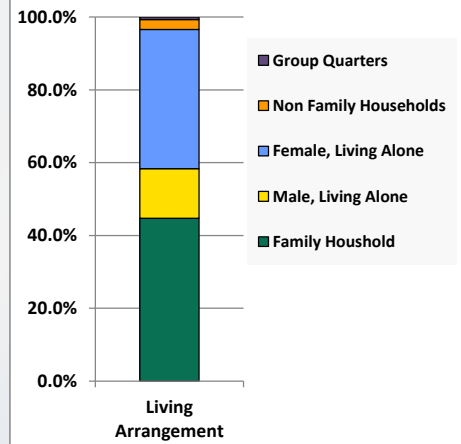
Household Type by Race/Ethnicity, 2010



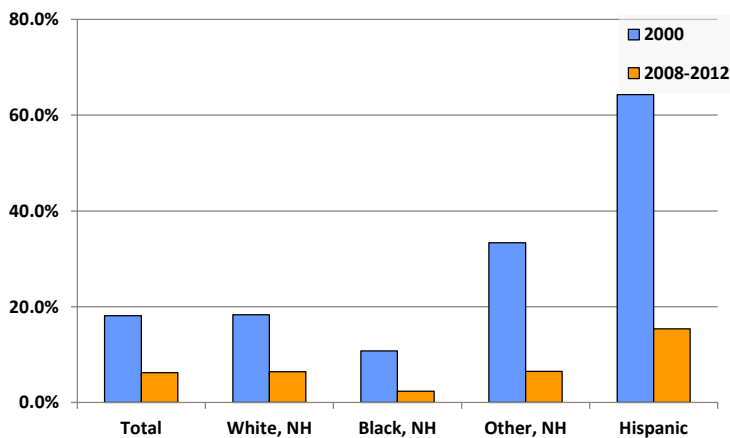
Average Household Size, 2010



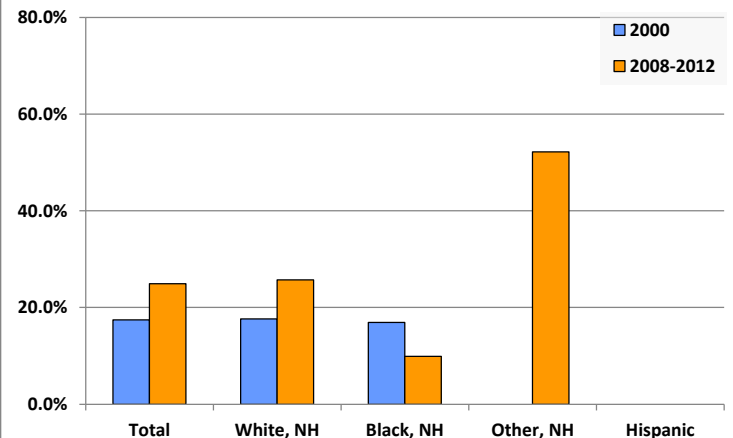
Living Arrangements 65+, 2008-2012



Percent of Adults that Did Not Complete High School



Percent of Adults Who Attained a Bachelor's Degree or Higher



Reference Data

Andrew Carnegie Free Library

	Total Population	White, Non- Hispanic	Black, Non- Hispanic	Other, Non- Hispanic	Detail for Other, Non-Hispanic					Hispanic or Latino
					AIAN	Asian	NHOPI	Some Other Race	Two or More Races	
A. Total Population										
2000 Total	8,389	7,605	460	241	7	103	4	20	107	83
2000 pct of Total	100.0%	90.7%	5.5%	2.9%	0.1%	1.2%	0.0%	0.2%	1.3%	1.0%
2010 Total	7,972	6,909	584	349	13	129	6	9	192	130
2010 pct of Total	100.0%	86.7%	7.3%	4.4%	0.2%	1.6%	0.1%	0.1%	2.4%	1.6%
B. Population by Major Age Groups by Race and Ethnicity										
2000										
0-19	1,808	1,473	197	114	1	25	0	18	70	24
20-64	4,894	4,485	237	116	6	72	4	2	32	56
65+	1,687	1,647	26	11	0	6	0	0	5	3
85+	204	202	1	1	0	0	0	0	1	0
2010										
0-19	1,574	1,132	227	165	3	27	4	6	125	50
20-64	5,084	4,499	335	173	8	97	1	3	64	77
65+	1,314	1,278	22	11	2	5	1	0	3	3
85+	249	246	2	0	0	0	0	0	0	1
C. Age Mix for Each Racial and Ethnic Group										
2000										
0-19	21.6%	19.4%	42.8%	47.3%	14.3%	24.3%	0.0%	90.0%	65.4%	28.9%
20-64	58.3%	59.0%	51.5%	48.1%	85.7%	69.9%	100.0%	10.0%	29.9%	67.5%
65+	20.1%	21.7%	5.7%	4.6%	0.0%	5.8%	0.0%	0.0%	4.7%	3.6%
85+	2.4%	2.7%	0.2%	0.4%	0.0%	0.0%	0.0%	0.0%	0.9%	0.0%
2010										
0-19	19.7%	16.4%	38.9%	47.3%	23.1%	20.9%	66.7%	66.7%	65.1%	38.5%
20-64	63.8%	65.1%	57.4%	49.6%	61.5%	75.2%	16.7%	33.3%	33.3%	59.2%
65+	16.5%	18.5%	3.8%	3.2%	15.4%	3.9%	16.7%	0.0%	1.6%	2.3%
85+	3.1%	3.6%	0.3%	0.0%	0.0%	0.0%	0.0%	0.0%	0.0%	0.8%
D. Racial and Ethnic Composition of Each Age Group										
2000										
0-19	100.0%	81.5%	10.9%	6.3%	0.1%	1.4%	0.0%	1.0%	3.9%	1.3%
20-64	100.0%	91.6%	4.8%	2.4%	0.1%	1.5%	0.1%	0.0%	0.7%	1.1%
65+	100.0%	97.6%	1.5%	0.7%	0.0%	0.4%	0.0%	0.0%	0.3%	0.2%
85+	100.0%	99.0%	0.5%	0.5%	0.0%	0.0%	0.0%	0.0%	0.5%	0.0%
2010										
0-19	100.0%	71.9%	14.4%	10.5%	0.2%	1.7%	0.3%	0.4%	7.9%	3.2%
20-64	100.0%	88.5%	6.6%	3.4%	0.2%	1.9%	0.0%	0.1%	1.3%	1.5%
65+	100.0%	97.3%	1.7%	0.8%	0.2%	0.4%	0.1%	0.0%	0.2%	0.2%
85+	100.0%	98.8%	0.8%	0.0%	0.0%	0.0%	0.0%	0.0%	0.0%	0.4%
E. Population Growth										
2000-2010, Change										
0-19	-234	-341	30	51	2	2	4	-12	55	26
20-64	190	14	98	57	2	25	-3	1	32	21
65+	-373	-369	-4	0	2	-1	1	0	-2	0
85+	45	44	1	-1	0	0	0	0	-1	1
Total	-417	-696	124	108	6	26	2	-11	85	47
2000-2010, Pct Change										
0-19	-12.9%	-23.2%	15.2%	44.7%	200.0%	8.0%	0.0%	-66.7%	78.6%	108.3%
20-64	3.9%	0.3%	41.4%	49.1%	33.3%	34.7%	-75.0%	50.0%	100.0%	37.5%
65+	-22.1%	-22.4%	-15.4%	0.0%	0.0%	-16.7%	0.0%	0.0%	-40.0%	0.0%
85+	22.1%	21.8%	100.0%	-100.0%	0.0%	0.0%	0.0%	0.0%	-100.0%	0.0%
Total	-5.0%	-9.2%	27.0%	44.8%	85.7%	25.2%	50.0%	-55.0%	79.4%	56.6%

Source: Decennial Census 2010, 2000, American Community Survey 2008-2012

Prepared for the Pennsylvania State Library by The Pennsylvania State Data Center, 9/2014

Reference Data

Andrew Carnegie Free Library

	Total Population	White, Non- Hispanic	Black, Non- Hispanic	Other, Non- Hispanic	Detail for Other, Non-Hispanic					Hispanic or Latino
					AIAN	Asian	NHOPI	Some Other	Two or More	
								Race	Races	
F. Population by Library-Defined Age Groups, 2010										
0-5	565	371	95	82	1	12	1	3	65	17
6-10	364	253	45	51	1	9	3	3	35	15
11-13	216	163	30	15	1	3	0	0	11	8
14-18	361	295	43	16	0	3	0	0	13	7
19-32	1,675	1,406	157	77	2	43	1	1	30	35
33-45	1,274	1,111	78	58	1	31	0	2	24	27
46-64	2,203	2,032	114	39	5	23	0	0	11	18
65-84	1,065	1,032	20	11	2	5	1	0	3	2
85+	249	246	2	0	0	0	0	0	0	1
Total	7,972	6,909	584	349	13	129	6	9	192	130
G. Population by 5-Year Age Cohorts, 2010										
0-4	502	331	87	70	1	10	1	3	55	14
5-9	349	234	43	56	0	10	3	2	41	16
10-14	361	274	49	27	2	5	0	1	19	11
15-19	362	293	48	12	0	2	0	0	10	9
20-24	536	437	68	22	0	10	0	1	11	9
25-29	665	583	42	29	2	17	1	0	9	11
30-34	641	538	48	38	0	24	0	0	14	17
35-39	477	403	34	28	0	17	0	2	9	12
40-44	457	410	23	16	1	5	0	0	10	8
45-49	553	506	32	7	2	3	0	0	2	8
50-54	656	599	42	12	2	6	0	0	4	3
55-59	620	574	28	13	1	9	0	0	3	5
60-64	479	449	18	8	0	6	0	0	2	4
65-69	323	307	8	6	2	2	0	0	2	2
70-74	272	263	8	1	0	0	1	0	0	0
75-79	213	209	1	3	0	3	0	0	0	0
80-84	257	253	3	1	0	0	0	0	1	0
85-89	171	168	2	0	0	0	0	0	0	1
90-94	59	59	0	0	0	0	0	0	0	0
95-99	18	18	0	0	0	0	0	0	0	0
100+	1	1	0	0	0	0	0	0	0	0
Total	7,972	6,909	584	349	13	129	6	9	192	130

Source: Decennial Census 2010, 2000, American Community Survey 2008-2012

Prepared for the Pennsylvania State Library by The Pennsylvania State Data Center, 9/2014

Page 6

Reference Data

Andrew Carnegie Free Library

H. Income Distribution, 2008-2012

Range (in thousands)	Households	Pct of Total
<\$10K	342	8.9%
\$10K to <\$25K	834	21.8%
\$25K to <\$50K	1,079	28.2%
\$50K to <\$75K	583	15.2%
\$75K to <\$100K	367	9.6%
\$100K to <\$150K	379	9.9%
\$150K+	245	6.4%

I. Household Type, 2010

Household Type	2000	2000pct	2010	2010pct
Total Households	3,967	100.0%	3,900	100.0%
Family Households	2,134	53.8%	1,973	50.6%
Husband-wife, no children w/children	566	14.3%	409	10.5%
Female head, no husband, w/ children	283	7.1%	295	7.6%
Male head, no wife, w/ children	50	1.3%	66	1.7%
Without children	1,235	31.1%	1,203	30.8%
Nonfamily households	1,833	46.2%	1,927	49.4%
Living alone	1,604	40.4%	1,610	41.3%
Other nonfamily	229	5.8%	317	8.1%

J. Household Type by Race and Ethnicity, 2008-2012

Household Type	White, NH	Black, NH	Other, NH	Hispanic
Total Households	3,510	263	106	31
Husband wife family	34.9%	11.8%	40.6%	25.8%
Family with male head, no wife	3.9%	6.1%	3.8%	6.5%
family with female head, no husband	11.0%	39.2%	16.0%	25.8%
Living alone	42.2%	35.7%	29.2%	29.0%
Other nonfamily	8.1%	7.2%	10.4%	12.9%

K. Poverty, 2008-2012

Families	Poverty	PA
All families	16.6%	9.1%
Families w/ related children	34.7%	15.3%
Female householder, no husband present	41.9%	28.8%
Female householder, no husband present, w/ related children	57.9%	39.2%
All people	20.2%	13.1%
Under 18 years	50.9%	18.4%
18 to 64 years	14.1%	12.3%
65 years and over	12.1%	8.4%

L. Educational Attainment by Race and Ethnicity, 2008-2012

Education Level	White, NH	Black	Other	Hispanic	Total
Population 25 years and over	5,335	385	92	52	5,864
Less than high school	6.4%	2.3%	7%	15.4%	6.2%
High school graduate (includes equivalency)	41.0%	40.3%	0%	36.5%	40.3%
Some college or associates degree	26.8%	47.5%	41%	48.1%	28.6%
Bachelors degree or higher	25.8%	9.9%	52%	0.0%	24.9%

M. Occupation, 2008-2012

Occupation	Estimate	Percent
Civilian population age 16 years and over	4,233	100.0%
Management, professional, and related occupations	1,351	31.9%
Service occupations	704	16.6%
Sales and office occupations	1,500	35.4%
Farming, fishing, and forestry occupations	0	0.0%
Construction, extraction, maintenance, and repair occupations	296	7.0%
Production, transportation, and material moving occupations	382	9.0%

N. Class of Worker, 2008-2012

Occupation	Estimate	Percent
Civilian population age 16 years and over	4,233	100.0%
Private, for profit, wage and salary employee	3,243	76.6%
Private, not for profit, wage and salary employee	496	11.7%
Private, for profit, wage and salary self-employed in own business	62	1.5%
Government workers	296	7.0%
Self-employed in own not incorporated business	136	3.2%
Unpaid family workers in family business	0	0.0%