

Demographic Profile Annville Free Library

Population Growth: The total population of the Annville Free Library service area increased by 1.6 percent over the past decade to 12,078; this growth rate was lower than the statewide rate of 3.4 percent.

Age and Sex: In 2010, the Annville Free Library service area had a total population of 12,078 - 5,814 males (48.1 percent) and 6,264 females (51.9 percent). The age structure of the population in 2010 was as follows: 25.3 percent of the population was under 20 years old, 59.6 percent was 20 to 64 years old and 15.1 percent was 65 years or older.

Race and Ethnicity: For people reporting one race alone, not of Hispanic ethnicity, 94.4 percent were White; .9 percent were Black or African American; 1.9 percent were Other Race Alone.¹ A total of 340 or 2.8 percent of the population were Hispanic.²

Households: In 2010, there were 4,443 households in the Annville Free Library service area. The average household size was 2.41 people. Families made up 67.2 percent of the households. This figure includes both families with (26.1 percent) and without (41.1 percent) children. Of families with children less than 18 years old, 19.2 percent were married-couple families, 4.5 percent were female householder families with no husband present, and the remaining (2.4 percent) were male-headed households with no wife present.

Education: The educational attainment of the population 25 years and over was lower in the Annville Free Library service area than in Pennsylvania. During the period 2008-2012, 19.6 percent of residents had earned a Bachelor's degree or higher, compared with 27.0 percent statewide. A total of 798 or 10.3 percent had not completed high school, compared with 11.7 percent for the commonwealth as a whole.

Income and Poverty: Households with incomes of \$50,000 to \$74,999 (22.6 percent) made up the largest percent of households in the Annville Free Library service area in 2008-2012. For comparison, 18.7 percent of commonwealth households were in this range during the period.

In 2008-2012, the overall poverty rate for the Annville Free Library service area was lower than Pennsylvania (7.0 percent compared to 13.1 percent). The poverty rate for the population under 18 years of age was 8.6 percent, compared with 6.5 percent of people 18 to 64 years and 6.6 percent for those aged 65 years and over. A total of 120 or 3.8 percent of all families had incomes below poverty level. In 2008-2012, 6.6 percent of families with related children and 18.6 percent of families with a female householder and no husband with related children present had incomes below the poverty level.

Class of Worker and Occupation: In 2008-2012, 80.9 percent of the workforce was private wage and salary workers; 11.2 percent were federal, state, or local government workers; and 7.5 percent were self-employed in their own (not incorporated) business.

The top occupation group for the civilian employed population 16 years and over in the Annville Free Library service area in 2008-2012 was Management, business, science, and arts (30.1 percent).

¹ Other race includes those who identified themselves as American Indian/Alaska Native, Asian, Native Hawaiian/Other Pacific Islander, Some Other Race and Two or More Races on the 2010 Census form.

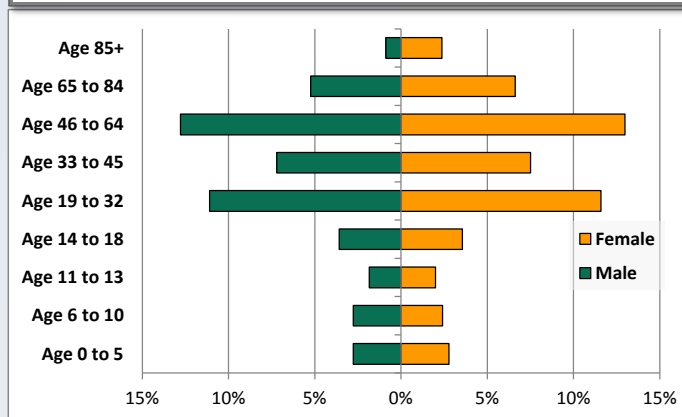
² People of Hispanic origin may be of any race.

Demographic Profile

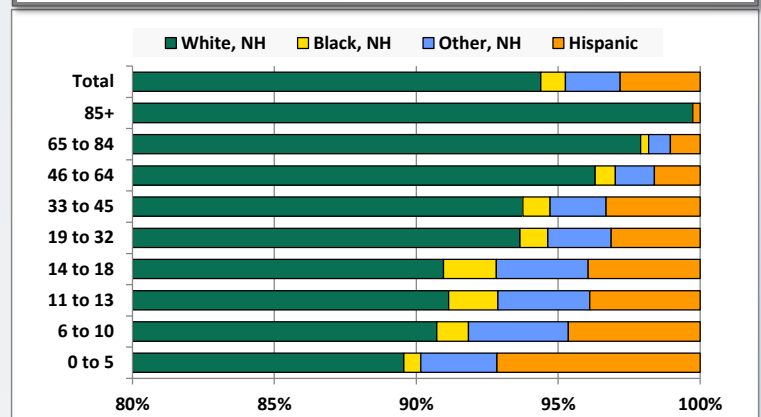
Annville Free Library

Key Indicators		
	2000	2010
Population Growth		
Total Population	11,891	12,078
10-Year Growth	N/A	1.6%
Diversity		
White Alone, Non-Hispanic	96.0%	94.4%
Black Alone, Non-Hispanic	0.7%	0.9%
Other Race Alone, Non-Hispanic	1.9%	1.9%
Percent Hispanic	1.4%	2.8%
Aging		
Percent 65 Years and Over	14.3%	15.1%
Households		
Percent Married Couple with Own Children	25.4%	19.2%
Percent Living Alone	23.6%	26.8%

Population by Library-Defined Age Group, 2010



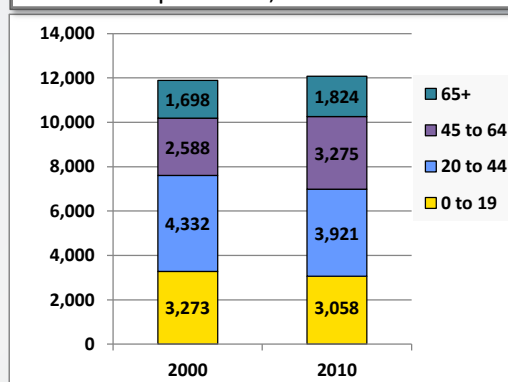
Race/Ethnicity by Library-Defined Age Group, 2010



Population Growth by Library-Defined Age Group, 2000 to 2010

Age Group	2010	Change	
		Numeric	Percent
Total	12,078	187	1.6%
85+	393	156	65.8%
65 to 84	1,431	-30	-2.1%
46 to 64	3,113	707	29.4%
33 to 45	1,778	-523	-22.7%
19 to 32	2,741	116	4.4%
14 to 18	863	-97	-10.1%
11 to 13	463	8	1.8%
6 to 10	625	-59	-8.6%
0 to 5	671	-91	-11.9%

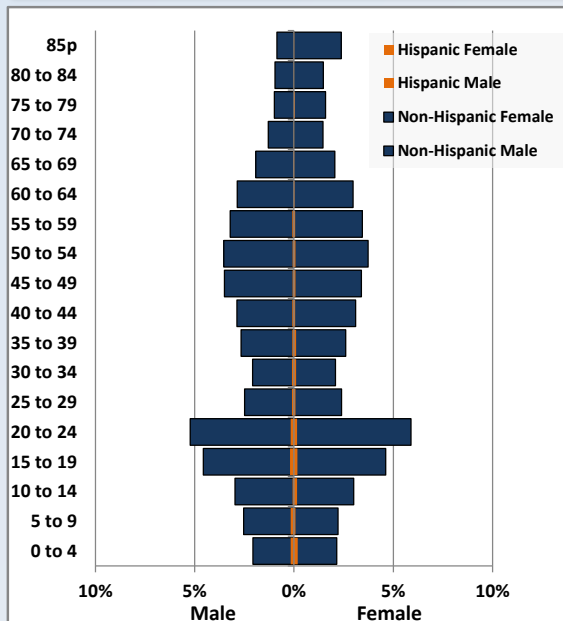
Population Total, 2000 and 2010



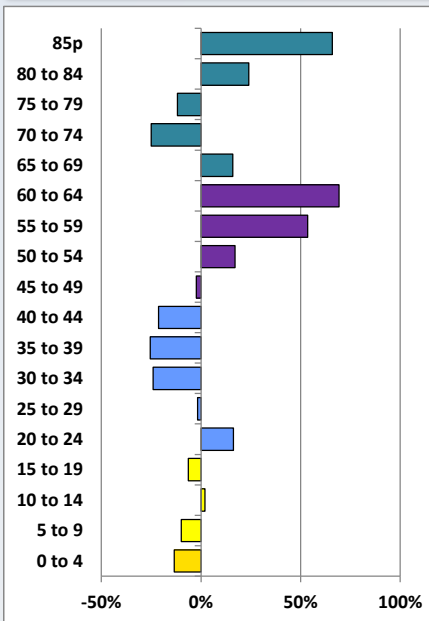
Demographic Profile

Annville Free Library

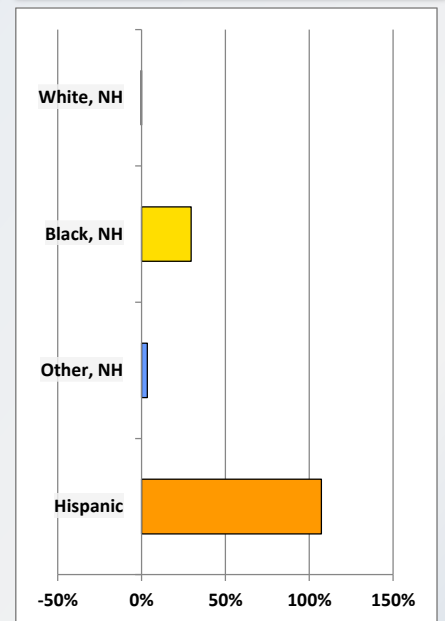
Population by 5-Year Age Cohorts



Pop Change by Age, 2000 to 2010

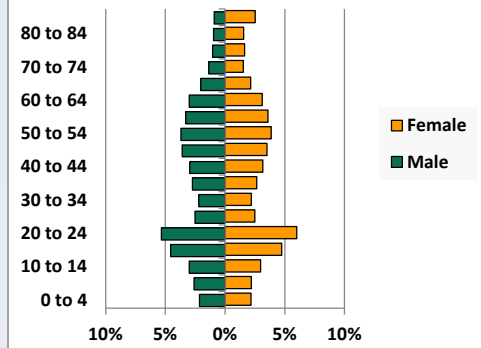


Pop Change by Race/Ethnicity, 2000 to 2010

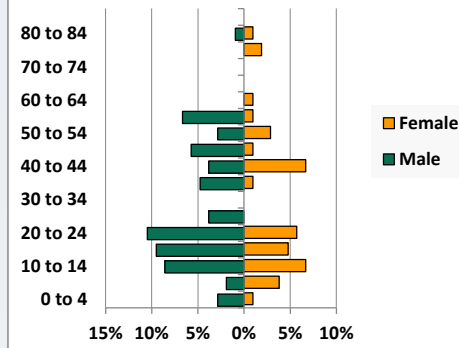


Population by Age, Race and Ethnicity 2010

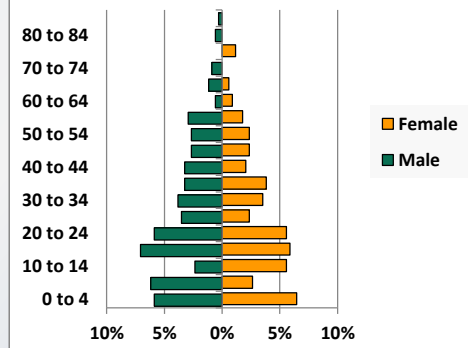
White, Not Hispanic



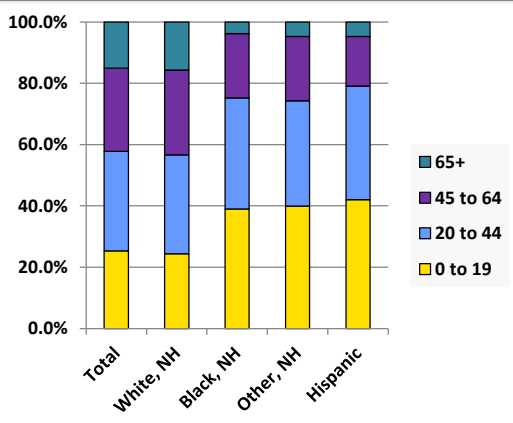
Black, Non-Hispanic



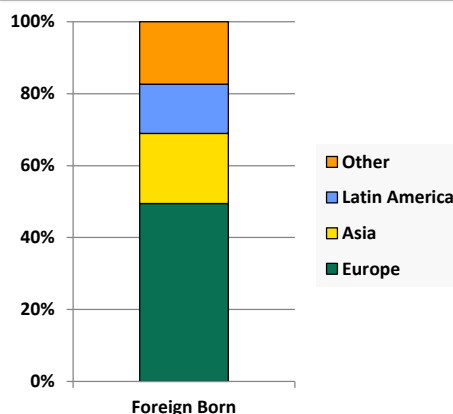
Hispanic



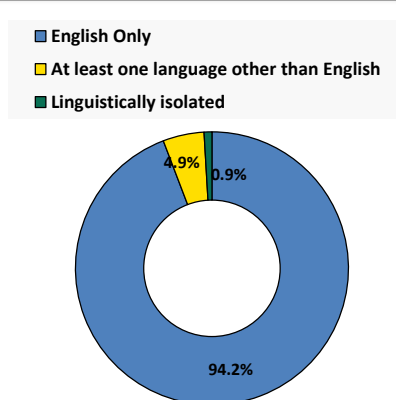
Age by Race and Ethnicity, 2010



Foreign Born, 2010



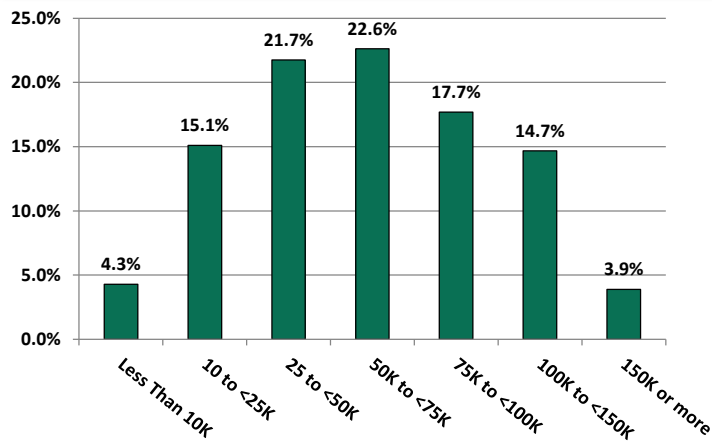
Household Language, 2010



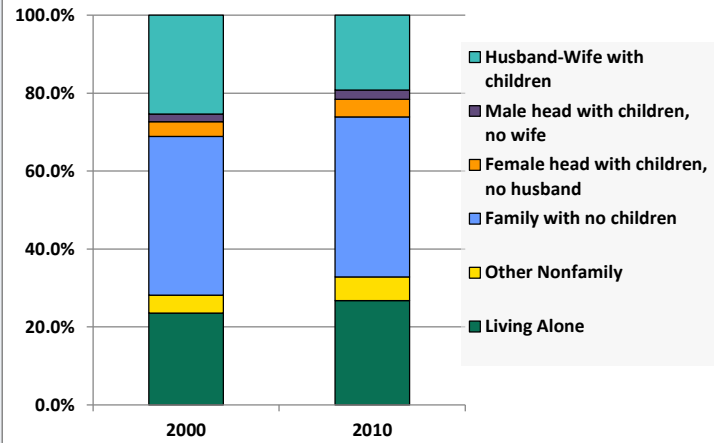
Demographic Profile

Annville Free Library

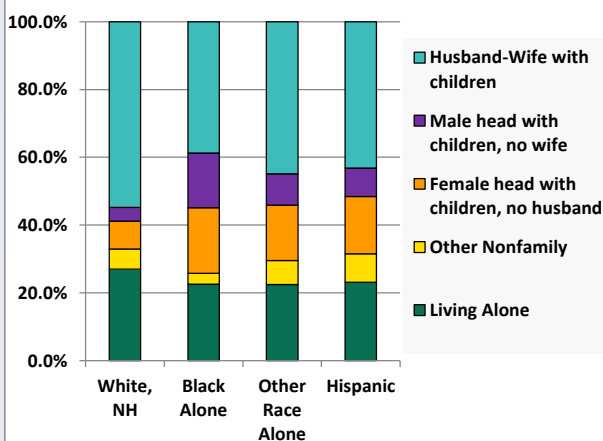
Household Income Distribution, 2008-2012



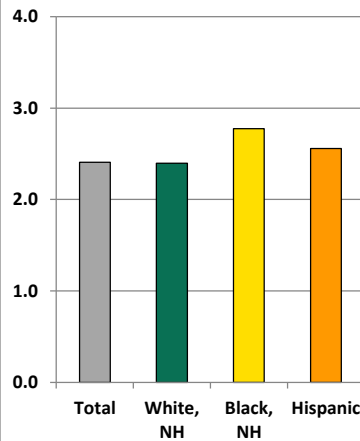
Household Type, 2000 and 2010



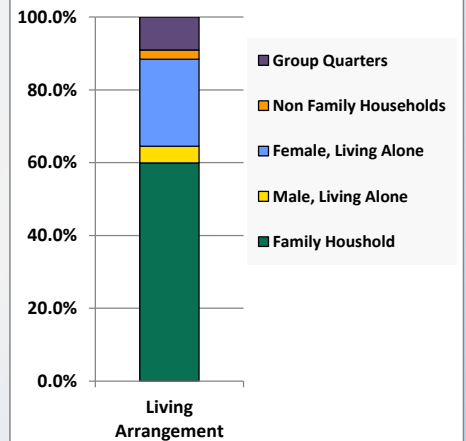
Household Type by Race/Ethnicity, 2010



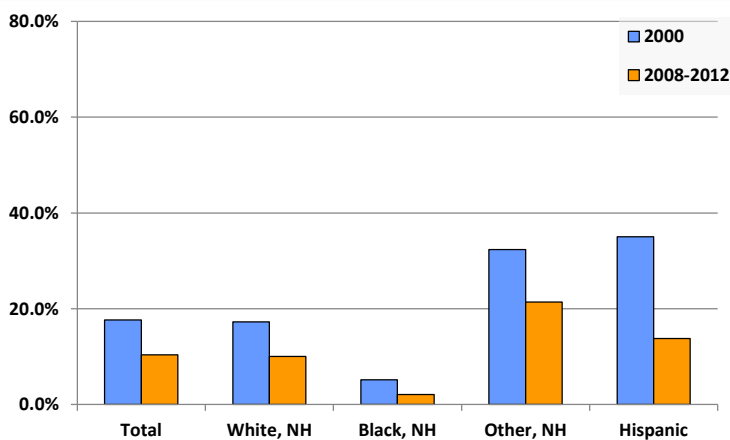
Average Household Size, 2010



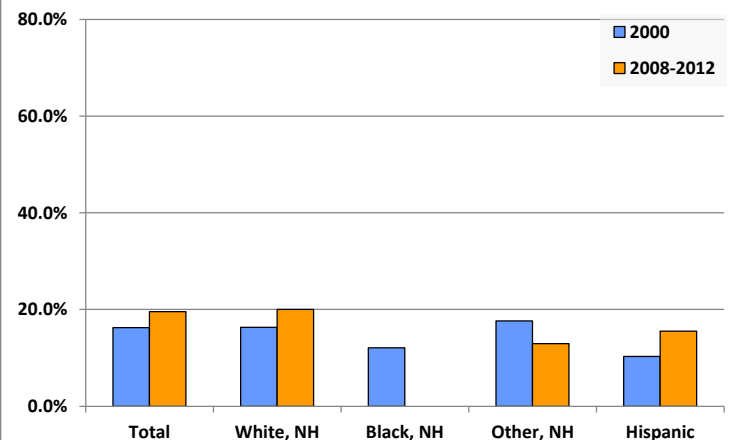
Living Arrangements 65+, 2008-2012



Percent of Adults that Did Not Complete High School



Percent of Adults Who Attained a Bachelor's Degree or Higher



Reference Data

Annville Free Library

	Total Population	White, Non- Hispanic	Black, Non- Hispanic	Other, Non- Hispanic	Detail for Other, Non-Hispanic					Hispanic or Latino
					AIAN	Asian	NHOPI	Some Other Race	Two or More Races	
A. Total Population										
2000 Total	11,891	11,421	81	225	5	106	7	20	87	164
2000 pct of Total	100.0%	96.0%	0.7%	1.9%	0.0%	0.9%	0.1%	0.2%	0.7%	1.4%
2010 Total	12,078	11,400	105	233	12	105	6	1	109	340
2010 pct of Total	100.0%	94.4%	0.9%	1.9%	0.1%	0.9%	0.0%	0.0%	0.9%	2.8%
B. Population by Major Age Groups by Race and Ethnicity										
2000										
0-19	3,273	3,081	33	96	1	41	2	8	44	63
20-64	6,920	6,670	44	114	4	57	5	10	38	92
65+	1,698	1,670	4	15	0	8	0	2	5	9
85+	237	237	0	0	0	0	0	0	0	0
2010										
0-19	3,058	2,781	41	93	2	29	3	0	59	143
20-64	7,196	6,826	60	129	9	70	3	1	46	181
65+	1,824	1,793	4	11	1	6	0	0	4	16
85+	393	392	0	0	0	0	0	0	0	1
C. Age Mix for Each Racial and Ethnic Group										
2000										
0-19	27.5%	27.0%	40.7%	42.7%	20.0%	38.7%	28.6%	40.0%	50.6%	38.4%
20-64	58.2%	58.4%	54.3%	50.7%	80.0%	53.8%	71.4%	50.0%	43.7%	56.1%
65+	14.3%	14.6%	4.9%	6.7%	0.0%	7.5%	0.0%	10.0%	5.7%	5.5%
85+	2.0%	2.1%	0.0%	0.0%	0.0%	0.0%	0.0%	0.0%	0.0%	0.0%
2010										
0-19	25.3%	24.4%	39.0%	39.9%	16.7%	27.6%	50.0%	0.0%	54.1%	42.1%
20-64	59.6%	59.9%	57.1%	55.4%	75.0%	66.7%	50.0%	100.0%	42.2%	53.2%
65+	15.1%	15.7%	3.8%	4.7%	8.3%	5.7%	0.0%	0.0%	3.7%	4.7%
85+	3.3%	3.4%	0.0%	0.0%	0.0%	0.0%	0.0%	0.0%	0.0%	0.3%
D. Racial and Ethnic Composition of Each Age Group										
2000										
0-19	100.0%	94.1%	1.0%	2.9%	0.0%	1.3%	0.1%	0.2%	1.3%	1.9%
20-64	100.0%	96.4%	0.6%	1.6%	0.1%	0.8%	0.1%	0.1%	0.5%	1.3%
65+	100.0%	98.4%	0.2%	0.9%	0.0%	0.5%	0.0%	0.1%	0.3%	0.5%
85+	100.0%	100.0%	0.0%	0.0%	0.0%	0.0%	0.0%	0.0%	0.0%	0.0%
2010										
0-19	100.0%	90.9%	1.3%	3.0%	0.1%	0.9%	0.1%	0.0%	1.9%	4.7%
20-64	100.0%	94.9%	0.8%	1.8%	0.1%	1.0%	0.0%	0.0%	0.6%	2.5%
65+	100.0%	98.3%	0.2%	0.6%	0.1%	0.3%	0.0%	0.0%	0.2%	0.9%
85+	100.0%	99.7%	0.0%	0.0%	0.0%	0.0%	0.0%	0.0%	0.0%	0.3%
E. Population Growth										
2000-2010, Change										
0-19	-215	-300	8	-3	1	-12	1	-8	15	80
20-64	276	156	16	15	5	13	-2	-9	8	89
65+	126	123	0	-4	1	-2	0	-2	-1	7
85+	156	155	0	0	0	0	0	0	0	1
Total	187	-21	24	8	7	-1	-1	-19	22	176
2000-2010, Pct Change										
0-19	-6.6%	-9.7%	24.2%	-3.1%	100.0%	-29.3%	50.0%	-100.0%	34.1%	127.0%
20-64	4.0%	2.3%	36.4%	13.2%	125.0%	22.8%	-40.0%	-90.0%	21.1%	96.7%
65+	7.4%	7.4%	0.0%	-26.7%	0.0%	-25.0%	0.0%	-100.0%	-20.0%	77.8%
85+	65.8%	65.4%	0.0%	0.0%	0.0%	0.0%	0.0%	0.0%	0.0%	0.0%
Total	1.6%	-0.2%	29.6%	3.6%	140.0%	-0.9%	-14.3%	-95.0%	25.3%	107.3%

Source: Decennial Census 2010, 2000, American Community Survey 2008-2012

Prepared for the Pennsylvania State Library by The Pennsylvania State Data Center, 9/2014

Reference Data

Annville Free Library

	Total Population	White, Non- Hispanic	Black, Non- Hispanic	Other, Non- Hispanic	Detail for Other, Non-Hispanic					Hispanic or Latino
					AIAN	Asian	NHOPI	Some Other	Two or More	
								Race	Races	
F. Population by Library-Defined Age Groups, 2010										
0-5	671	601	4	18	0	6	1	0	11	48
6-10	625	567	7	22	0	6	0	0	16	29
11-13	463	422	8	15	0	3	0	0	12	18
14-18	863	785	16	28	1	8	2	0	17	34
19-32	2,741	2,567	27	61	4	33	1	1	22	86
33-45	1,778	1,667	17	35	3	20	1	0	11	59
46-64	3,113	2,998	22	43	3	23	1	0	16	50
65-84	1,431	1,401	4	11	1	6	0	0	4	15
85+	393	392	0	0	0	0	0	0	0	1
Total	12,078	11,400	105	233	12	105	6	1	109	340
G. Population by 5-Year Age Cohorts, 2010										
0-4	552	494	4	12	0	4	1	0	7	42
5-9	604	547	6	21	0	7	0	0	14	30
10-14	749	681	16	25	1	4	0	0	20	27
15-19	1,153	1,059	15	35	1	14	2	0	18	44
20-24	1,382	1,291	17	35	2	18	1	0	14	39
25-29	609	571	4	14	1	7	0	1	5	20
30-34	530	502	0	3	0	3	0	0	0	25
35-39	661	614	6	17	0	10	0	0	7	24
40-44	739	699	11	11	2	6	0	0	3	18
45-49	850	809	7	17	2	6	2	0	7	17
50-54	895	860	6	12	1	7	0	0	4	17
55-59	821	783	8	14	1	9	0	0	4	16
60-64	709	697	1	6	0	4	0	0	2	5
65-69	486	477	0	3	1	2	0	0	0	6
70-74	335	330	0	2	0	1	0	0	1	3
75-79	315	307	2	2	0	0	0	0	2	4
80-84	295	287	2	4	0	3	0	0	1	2
85-89	245	244	0	0	0	0	0	0	0	1
90-94	113	113	0	0	0	0	0	0	0	0
95-99	27	27	0	0	0	0	0	0	0	0
100+	8	8	0	0	0	0	0	0	0	0
Total	12,078	11,400	105	233	12	105	6	1	109	340

Source: Decennial Census 2010, 2000, American Community Survey 2008-2012

Prepared for the Pennsylvania State Library by The Pennsylvania State Data Center, 9/2014

Reference Data

Annville Free Library

H. Income Distribution, 2008-2012

Range (in thousands)	Households	Pct of Total
<\$10K	185	4.3%
\$10K to <\$25K	654	15.1%
\$25K to <\$50K	941	21.7%
\$50K to <\$75K	979	22.6%
\$75K to <\$100K	766	17.7%
\$100K to <\$150K	635	14.7%
\$150K+	168	3.9%

I. Household Type, 2010

Household Type	2000	2000pct	2010	2010pct
Total Households	4,254	100.0%	4,443	100.0%
Family Households	3,054	71.8%	2,984	67.2%
Husband-wife, no children w/children	1,080	25.4%	854	19.2%
Female head, no husband, w/ children	163	3.8%	201	4.5%
Male head, no wife, w/ children	82	1.9%	105	2.4%
Without children	1,729	40.6%	1,824	41.1%
Nonfamily households	1,200	28.2%	1,459	32.8%
Living alone	1,003	23.6%	1,191	26.8%
Other nonfamily	197	4.6%	268	6.0%

J. Household Type by Race and Ethnicity, 2008-2012

Household Type	White, NH	Black, NH	Other, NH	Hispanic
Total Households	4,256	31	98	95
Husband wife family	54.8%	38.7%	44.9%	43.2%
Family with male head, no wife	4.0%	16.1%	9.2%	8.4%
family with female head, no husband	8.2%	19.4%	16.3%	16.8%
Living alone	27.0%	22.6%	22.4%	23.2%
Other nonfamily	6.0%	3.2%	7.1%	8.4%

K. Poverty, 2008-2012

Families	Poverty	PA
All families	3.8%	9.1%
Families w/ related children	6.6%	15.3%
Female householder, no husband present	14.0%	28.8%
Female householder, no husband present, w/ related children	18.6%	39.2%
All people	7.0%	13.1%
Under 18 years	8.6%	18.4%
18 to 64 years	6.5%	12.3%
65 years and over	6.6%	8.4%

L. Educational Attainment by Race and Ethnicity, 2008-2012

Education Level	White, NH	Black	Other	Hispanic	Total
Population 25 years and over	7,336	95	224	174	7,714
Less than high school	10.1%	2.1%	21%	13.8%	10.3%
High school graduate (includes equivalency	45.2%	45.3%	25%	35.6%	44.5%
Some college or associates degree	24.8%	52.6%	41%	35.1%	25.6%
Bachelors degree or higher	20.0%	0.0%	13%	15.5%	19.6%

M. Occupation, 2008-2012

Occupation	Estimate	Percent
Civilian population age 16 years and over	5,899	100.0%
Management, professional, and related occupations	1,775	30.1%
Service occupations	1,193	20.2%
Sales and office occupations	1,591	27.0%
Farming, fishing, and forestry occupations	56	0.9%
Construction, extraction, maintenance, and repair occupations	539	9.1%
Production, transportation, and material moving occupations	745	12.6%

N. Class of Worker, 2008-2012

Occupation	Estimate	Percent
Civilian population age 16 years and over	5,899	100.0%
Private, for profit, wage and salary employee	3,953	67.0%
Private, not for profit, wage and salary employee	689	11.7%
Private, for profit, wage and salary self-employed in own business	130	2.2%
Government workers	661	11.2%
Self-employed in own not incorporated business	445	7.5%
Unpaid family workers in family business	21	0.4%