

Demographic Profile Ashland Public Library

Population Growth: The total population of the Ashland Public Library service area decreased by -11.2 percent over the past decade to 5,857; this decline rate was lower than the statewide rate of 3.4 percent.

Age and Sex: In 2010, the Ashland Public Library service area had a total population of 5,857 - 2,879 males (49.2 percent) and 2,978 females (50.8 percent). The age structure of the population in 2010 was as follows: 21.9 percent of the population was under 20 years old, 59.5 percent was 20 to 64 years old and 18.6 percent was 65 years or older.

Race and Ethnicity: For people reporting one race alone, not of Hispanic ethnicity, 97.5 percent were White; .4 percent were Black or African American; .9 percent were Other Race Alone.¹ A total of 73 or 1.2 percent of the population were Hispanic.²

Households: In 2010, there were 2,616 households in the Ashland Public Library service area. The average household size was 2.24 people. Families made up 61.0 percent of the households. This figure includes both families with (22.2 percent) and without (38.8 percent) children. Of families with children less than 18 years old, 13.1 percent were married-couple families, 6.0 percent were female householder families with no husband present, and the remaining (3.2 percent) were male-headed households with no wife present.

Education: The educational attainment of the population 25 years and over was lower in the Ashland Public Library service area than in Pennsylvania. During the period 2008-2012, 11.4 percent of residents had earned a Bachelor's degree or higher, compared with 27.0 percent statewide. A total of 573 or 13.5 percent had not completed high school, compared with 11.7 percent for the commonwealth as a whole.

Income and Poverty: Households with incomes of \$25,000 to \$49,999 (31.9 percent) made up the largest percent of households in the Ashland Public Library service area in 2008-2012. For comparison, 24.4 percent of commonwealth households were in this range during the period.

In 2008-2012, the overall poverty rate for the Ashland Public Library service area was higher than Pennsylvania (13.6 percent compared to 13.1 percent). The poverty rate for the population under 18 years of age was 14.7 percent, compared with 14.3 percent of people 18 to 64 years and 9.6 percent for those aged 65 years and over. A total of 142 or 9.1 percent of all families had incomes below poverty level. In 2008-2012, 12.2 percent of families with related children and 42.0 percent of families with a female householder and no husband with related children present had incomes below the poverty level.

Class of Worker and Occupation: In 2008-2012, 81.9 percent of the workforce was private wage and salary workers; 15.3 percent were federal, state, or local government workers; and 2.8 percent were self-employed in their own (not incorporated) business.

The top occupation group for the civilian employed population 16 years and over in the Ashland Public Library service area in 2008-2012 was Production (26.4 percent).

¹ Other race includes those who identified themselves as American Indian/Alaska Native, Asian, Native Hawaiian/Other Pacific Islander, Some Other Race and Two or More Races on the 2010 Census form.

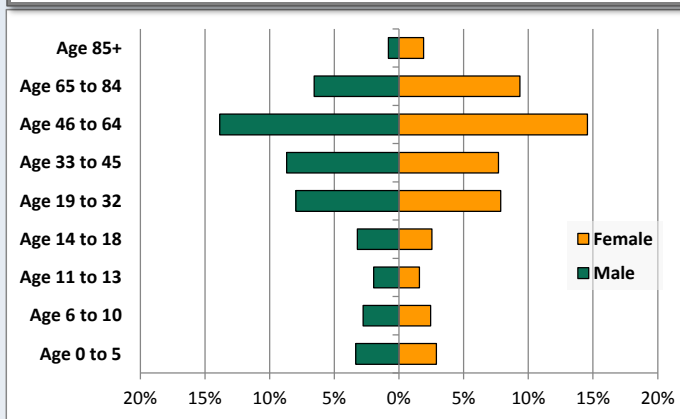
² People of Hispanic origin may be of any race.

Demographic Profile

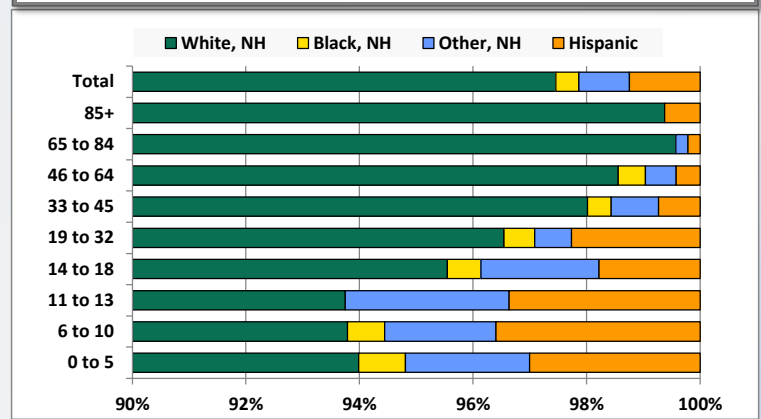
Ashland Public Library

Key Indicators		
	2000	2010
Population Growth		
Total Population	6,598	5,857
10-Year Growth	N/A	-11.2%
Diversity		
White Alone, Non-Hispanic	99.2%	97.5%
Black Alone, Non-Hispanic	0.1%	0.4%
Other Race Alone, Non-Hispanic	0.5%	0.9%
Percent Hispanic	0.2%	1.2%
Aging		
Percent 65 Years and Over	19.8%	18.6%
Households		
Percent Married Couple with Own Children	17.4%	13.1%
Percent Living Alone	34.2%	34.4%

Population by Library-Defined Age Group, 2010



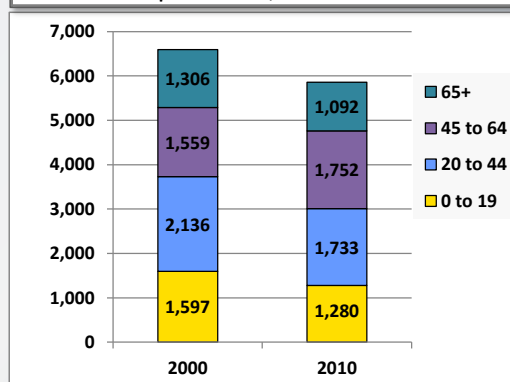
Race/Ethnicity by Library-Defined Age Group, 2010



Population Growth by Library-Defined Age Group, 2000 to 2010

Age Group	2010	Change	
		Numeric	Percent
Total	5,857	-741	-11.2%
85+	160	15	10.3%
65 to 84	932	-229	-19.7%
46 to 64	1,664	215	14.8%
33 to 45	958	-316	-24.8%
19 to 32	926	-121	-11.6%
14 to 18	337	-118	-25.9%
11 to 13	208	-39	-15.8%
6 to 10	306	-116	-27.5%
0 to 5	366	-32	-8.0%

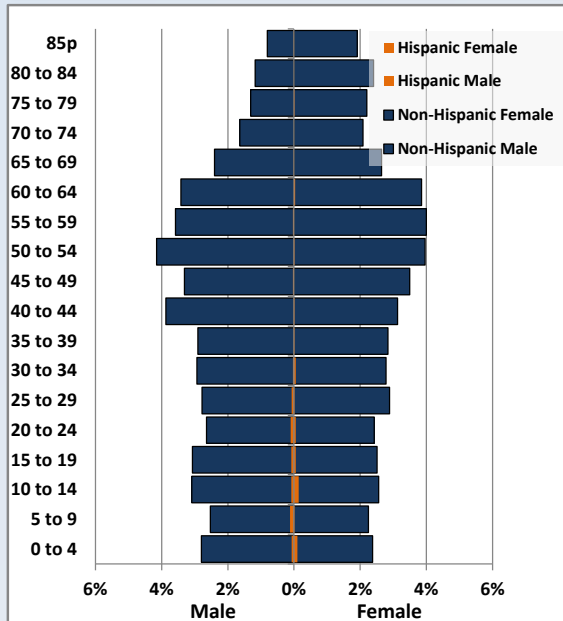
Population Total, 2000 and 2010



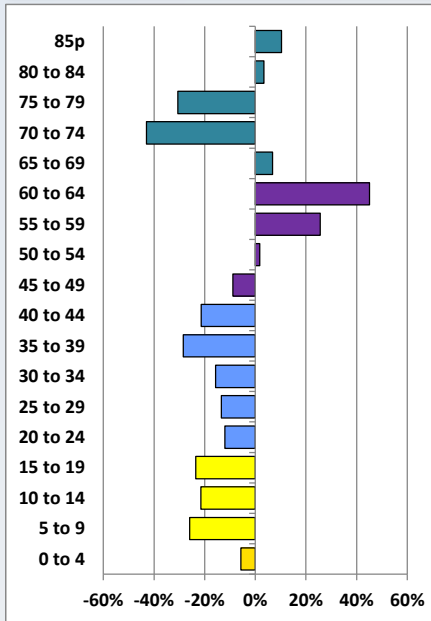
Demographic Profile

Ashland Public Library

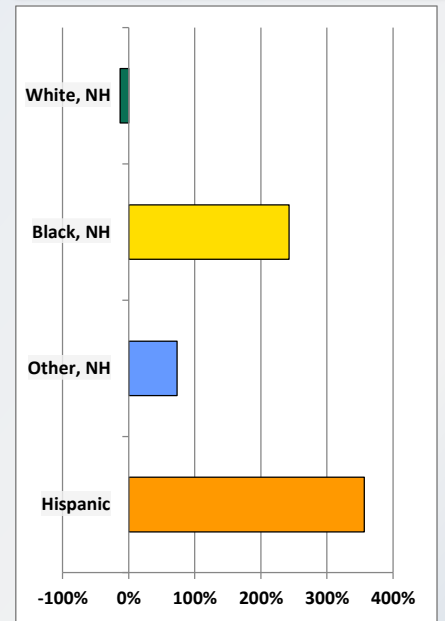
Population by 5-Year Age Cohorts



Pop Change by Age, 2000 to 2010

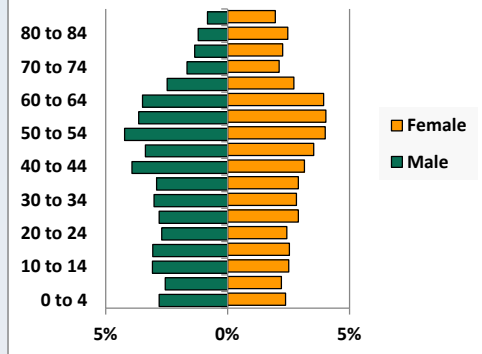


Pop Change by Race/Ethnicity, 2000 to 2010

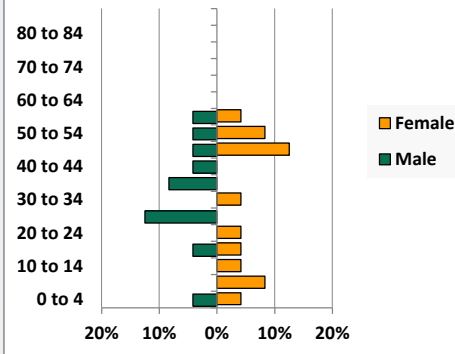


Population by Age, Race and Ethnicity 2010

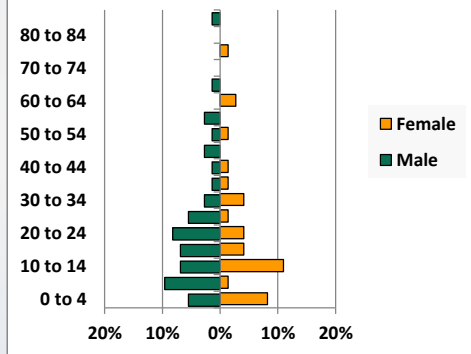
White, Not Hispanic



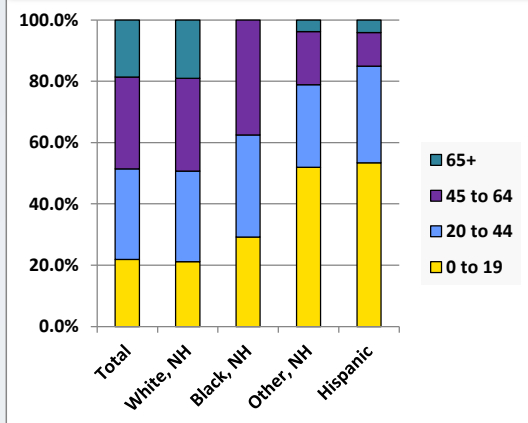
Black, Non-Hispanic



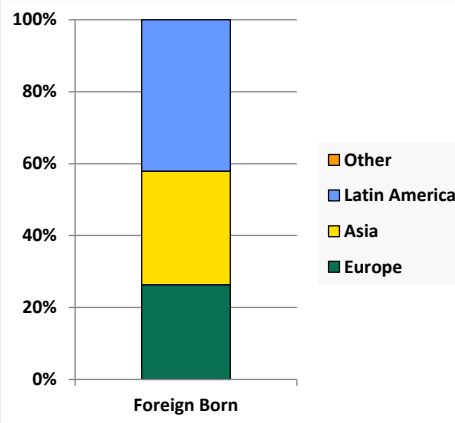
Hispanic



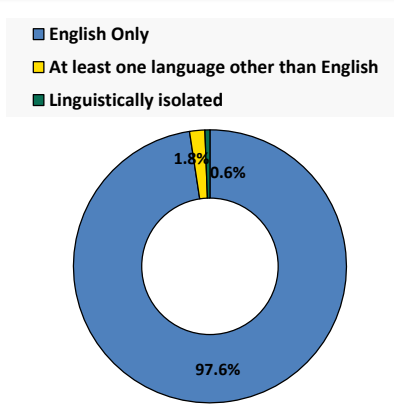
Age by Race and Ethnicity, 2010



Foreign Born, 2010



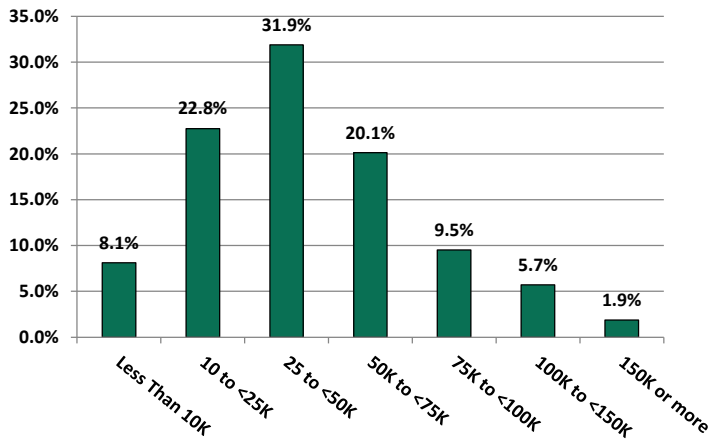
Household Language, 2010



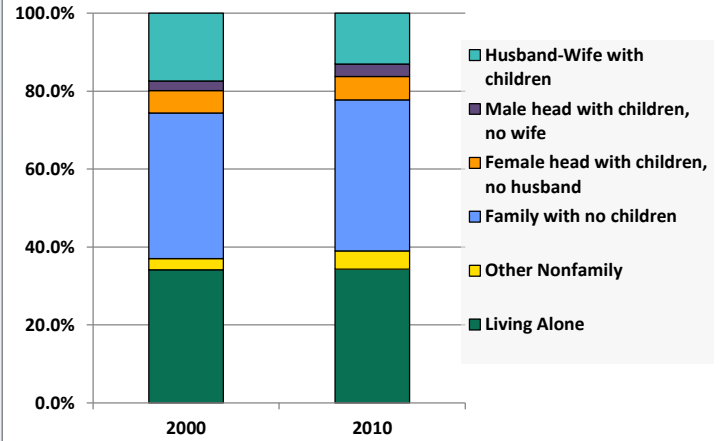
Demographic Profile

Ashland Public Library

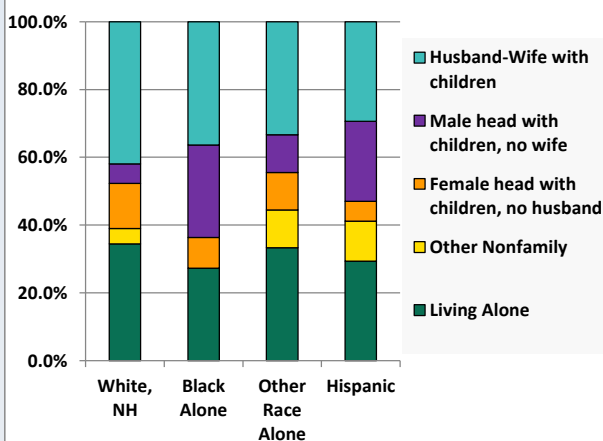
Household Income Distribution, 2008-2012



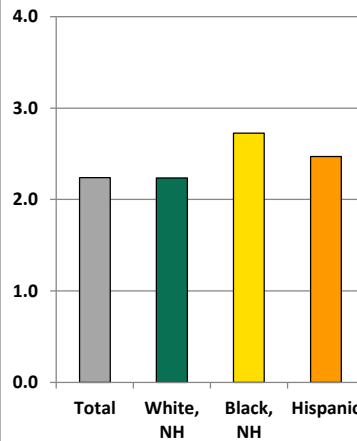
Household Type, 2000 and 2010



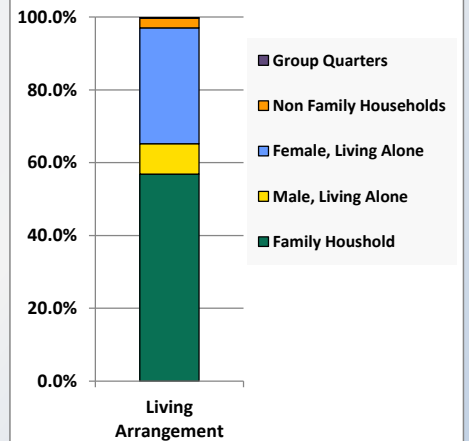
Household Type by Race/Ethnicity, 2010



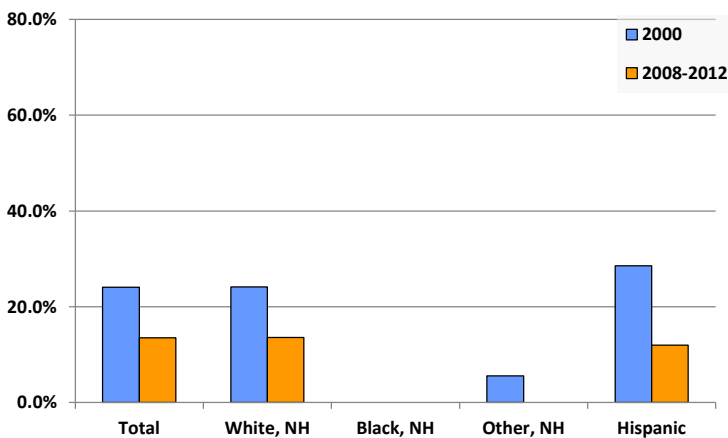
Average Household Size, 2010



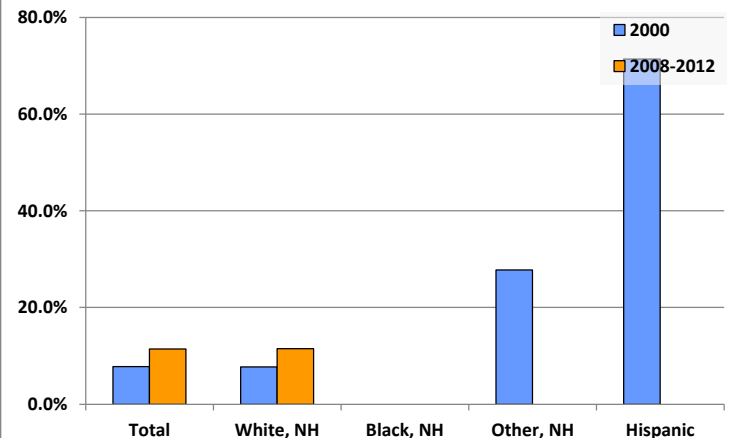
Living Arrangements 65+, 2008-2012



Percent of Adults that Did Not Complete High School



Percent of Adults Who Attained a Bachelor's Degree or Higher



Reference Data

Ashland Public Library

	Total Population	White, Non- Hispanic	Black, Non- Hispanic	Other, Non- Hispanic	Detail for Other, Non-Hispanic					Hispanic or Latino
					AIAN	Asian	NHOPI	Some Other Race	Two or More Races	
A. Total Population										
2000 Total	6,598	6,545	7	30	5	5	0	0	20	16
2000 pct of Total	100.0%	99.2%	0.1%	0.5%	0.1%	0.1%	0.0%	0.0%	0.3%	0.2%
2010 Total	5,857	5,708	24	52	6	9	0	1	36	73
2010 pct of Total	100.0%	97.5%	0.4%	0.9%	0.1%	0.2%	0.0%	0.0%	0.6%	1.2%
B. Population by Major Age Groups by Race and Ethnicity										
2000										
0-19	1,597	1,573	4	9	0	1	0	0	8	11
20-64	3,695	3,671	3	16	5	4	0	0	7	5
65+	1,306	1,301	0	5	0	0	0	0	5	0
85+	145	145	0	0	0	0	0	0	0	0
2010										
0-19	1,280	1,207	7	27	1	2	0	1	23	39
20-64	3,485	3,414	17	23	5	6	0	0	12	31
65+	1,092	1,087	0	2	0	1	0	0	1	3
85+	160	159	0	0	0	0	0	0	0	1
C. Age Mix for Each Racial and Ethnic Group										
2000										
0-19	24.2%	24.0%	57.1%	30.0%	0.0%	20.0%	0.0%	0.0%	40.0%	68.8%
20-64	56.0%	56.1%	42.9%	53.3%	100.0%	80.0%	0.0%	0.0%	35.0%	31.3%
65+	19.8%	19.9%	0.0%	16.7%	0.0%	0.0%	0.0%	0.0%	25.0%	0.0%
85+	2.2%	2.2%	0.0%	0.0%	0.0%	0.0%	0.0%	0.0%	0.0%	0.0%
2010										
0-19	21.9%	21.1%	29.2%	51.9%	16.7%	22.2%	0.0%	100.0%	63.9%	53.4%
20-64	59.5%	59.8%	70.8%	44.2%	83.3%	66.7%	0.0%	0.0%	33.3%	42.5%
65+	18.6%	19.0%	0.0%	3.8%	0.0%	11.1%	0.0%	0.0%	2.8%	4.1%
85+	2.7%	2.8%	0.0%	0.0%	0.0%	0.0%	0.0%	0.0%	0.0%	1.4%
D. Racial and Ethnic Composition of Each Age Group										
2000										
0-19	100.0%	98.5%	0.3%	0.6%	0.0%	0.1%	0.0%	0.0%	0.5%	0.7%
20-64	100.0%	99.4%	0.1%	0.4%	0.1%	0.1%	0.0%	0.0%	0.2%	0.1%
65+	100.0%	99.6%	0.0%	0.4%	0.0%	0.0%	0.0%	0.0%	0.4%	0.0%
85+	100.0%	100.0%	0.0%	0.0%	0.0%	0.0%	0.0%	0.0%	0.0%	0.0%
2010										
0-19	100.0%	94.3%	0.5%	2.1%	0.1%	0.2%	0.0%	0.1%	1.8%	3.0%
20-64	100.0%	98.0%	0.5%	0.7%	0.1%	0.2%	0.0%	0.0%	0.3%	0.9%
65+	100.0%	99.5%	0.0%	0.2%	0.0%	0.1%	0.0%	0.0%	0.1%	0.3%
85+	100.0%	99.4%	0.0%	0.0%	0.0%	0.0%	0.0%	0.0%	0.0%	0.6%
E. Population Growth										
2000-2010, Change										
0-19	-317	-366	3	18	1	1	0	1	15	28
20-64	-210	-257	14	7	0	2	0	0	5	26
65+	-214	-214	0	-3	0	1	0	0	-4	3
85+	15	14	0	0	0	0	0	0	0	1
Total	-741	-837	17	22	1	4	0	1	16	57
2000-2010, Pct Change										
0-19	-19.8%	-23.3%	75.0%	200.0%	0.0%	100.0%	0.0%	0.0%	187.5%	254.5%
20-64	-5.7%	-7.0%	466.7%	43.8%	0.0%	50.0%	0.0%	0.0%	71.4%	520.0%
65+	-16.4%	-16.4%	0.0%	-60.0%	0.0%	0.0%	0.0%	0.0%	-80.0%	0.0%
85+	10.3%	9.7%	0.0%	0.0%	0.0%	0.0%	0.0%	0.0%	0.0%	0.0%
Total	-11.2%	-12.8%	242.9%	73.3%	20.0%	80.0%	0.0%	0.0%	80.0%	356.3%

Source: Decennial Census 2010, 2000, American Community Survey 2008-2012

Prepared for the Pennsylvania State Library by The Pennsylvania State Data Center, 9/2014

Reference Data

Ashland Public Library

	Total Population	White, Non- Hispanic	Black, Non- Hispanic	Other, Non- Hispanic	Detail for Other, Non-Hispanic					Hispanic or Latino
					AIAN	Asian	NHOPI	Some Other	Two or More	
								Race	Races	
F. Population by Library-Defined Age Groups, 2010										
0-5	366	344	3	8	0	1	0	0	7	11
6-10	306	287	2	6	1	0	0	0	5	11
11-13	208	195	0	6	0	0	0	0	6	7
14-18	337	322	2	7	0	1	0	1	5	6
19-32	926	894	5	6	1	2	0	0	3	21
33-45	958	939	4	8	2	1	0	0	5	7
46-64	1,664	1,640	8	9	2	3	0	0	4	7
65-84	932	928	0	2	0	1	0	0	1	2
85+	160	159	0	0	0	0	0	0	0	1
Total	5,857	5,708	24	52	6	9	0	1	36	73
G. Population by 5-Year Age Cohorts, 2010										
0-4	313	296	2	5	0	1	0	0	4	10
5-9	288	272	2	6	1	0	0	0	5	8
10-14	344	319	1	11	0	1	0	0	10	13
15-19	335	320	2	5	0	0	0	1	4	8
20-24	306	293	1	3	0	1	0	0	2	9
25-29	337	326	3	3	1	1	0	0	1	5
30-34	340	333	1	1	0	0	0	0	1	5
35-39	338	332	2	2	0	0	0	0	2	2
40-44	412	404	1	5	2	1	0	0	2	2
45-49	401	394	4	1	0	1	0	0	0	2
50-54	477	470	3	2	1	0	0	0	1	2
55-59	446	438	2	4	1	1	0	0	2	2
60-64	428	424	0	2	0	1	0	0	1	2
65-69	297	296	0	0	0	0	0	0	0	1
70-74	218	216	0	2	0	1	0	0	1	0
75-79	207	206	0	0	0	0	0	0	0	1
80-84	210	210	0	0	0	0	0	0	0	0
85-89	109	108	0	0	0	0	0	0	0	1
90-94	42	42	0	0	0	0	0	0	0	0
95-99	9	9	0	0	0	0	0	0	0	0
100+	0	0	0	0	0	0	0	0	0	0
Total	5,857	5,708	24	52	6	9	0	1	36	73

Source: Decennial Census 2010, 2000, American Community Survey 2008-2012

Prepared for the Pennsylvania State Library by The Pennsylvania State Data Center, 9/2014

Reference Data

Ashland Public Library

H. Income Distribution, 2008-2012

Range (in thousands)	Households	Pct of Total
<\$10K	207	8.1%
\$10K to <\$25K	579	22.8%
\$25K to <\$50K	811	31.9%
\$50K to <\$75K	512	20.1%
\$75K to <\$100K	242	9.5%
\$100K to <\$150K	145	5.7%
\$150K+	48	1.9%

I. Household Type, 2010

Household Type	2000	2000pct	2010	2010pct
Total Households	2,853	100.0%	2,616	100.0%
Family Households	1,796	63.0%	1,595	61.0%
Husband-wife, no children w/children	496	17.4%	342	13.1%
Female head, no husband, w/ children	164	5.7%	156	6.0%
Male head, no wife, w/ children	70	2.5%	83	3.2%
Without children	1,066	37.4%	1,014	38.8%
Nonfamily households	1,057	37.0%	1,021	39.0%
Living alone	975	34.2%	899	34.4%
Other nonfamily	82	2.9%	122	4.7%

J. Household Type by Race and Ethnicity, 2008-2012

Household Type	White, NH	Black, NH	Other, NH	Hispanic
Total Households	2,577	11	18	17
Husband wife family	41.9%	36.4%	33.3%	29.4%
Family with male head, no wife	5.7%	27.3%	11.1%	23.5%
family with female head, no husband	13.3%	9.1%	11.1%	5.9%
Living alone	34.4%	27.3%	33.3%	29.4%
Other nonfamily	4.6%	0.0%	11.1%	11.8%

K. Poverty, 2008-2012

Families	Poverty	PA
All families	9.1%	9.1%
Families w/ related children	12.2%	15.3%
Female householder, no husband present	28.9%	28.8%
Female householder, no husband present, w/ related children	42.0%	39.2%
All people	13.6%	13.1%
Under 18 years	14.7%	18.4%
18 to 64 years	14.3%	12.3%
65 years and over	9.6%	8.4%

L. Educational Attainment by Race and Ethnicity, 2008-2012

Education Level	White, NH	Black	Other	Hispanic	Total
Population 25 years and over	4,195	0	27	25	4,232
Less than high school	13.6%	0.0%	0%	12.0%	13.5%
High school graduate (includes equivalency	56.1%	0.0%	0%	28.0%	55.8%
Some college or associates degree	18.8%	0.0%	100%	60.0%	19.3%
Bachelors degree or higher	11.5%	0.0%	0%	0.0%	11.4%

M. Occupation, 2008-2012

Occupation	Estimate	Percent
Civilian population age 16 years and over	2,543	100.0%
Management, professional, and related occupations	625	24.6%
Service occupations	473	18.6%
Sales and office occupations	504	19.8%
Farming, fishing, and forestry occupations	4	0.2%
Construction, extraction, maintenance, and repair occupations	265	10.4%
Production, transportation, and material moving occupations	672	26.4%

N. Class of Worker, 2008-2012

Occupation	Estimate	Percent
Civilian population age 16 years and over	2,543	100.0%
Private, for profit, wage and salary employee	1,833	72.1%
Private, not for profit, wage and salary employee	186	7.3%
Private, for profit, wage and salary self-employed in own business	63	2.5%
Government workers	389	15.3%
Self-employed in own not incorporated business	72	2.8%
Unpaid family workers in family business	0	0.0%