

Demographic Profile Avalon Public Library

Population Growth: The total population of the Avalon Public Library service area decreased by -11.1 percent over the past decade to 4,705; this decline rate was lower than the statewide rate of 3.4 percent.

Age and Sex: In 2010, the Avalon Public Library service area had a total population of 4,705 - 2,193 males (46.6 percent) and 2,512 females (53.4 percent). The age structure of the population in 2010 was as follows: 17.9 percent of the population was under 20 years old, 61.5 percent was 20 to 64 years old and 20.6 percent was 65 years or older.

Race and Ethnicity: For people reporting one race alone, not of Hispanic ethnicity, 86.8 percent were White; 8.5 percent were Black or African American; 3.4 percent were Other Race Alone.¹ A total of 57 or 1.2 percent of the population were Hispanic.²

Households: In 2010, there were 2,411 households in the Avalon Public Library service area. The average household size was 1.92 people. Families made up 44.3 percent of the households. This figure includes both families with (15.7 percent) and without (28.5 percent) children. Of families with children less than 18 years old, 8.7 percent were married-couple families, 5.4 percent were female householder families with no husband present, and the remaining (1.6 percent) were male-headed households with no wife present.

Education: The educational attainment of the population 25 years and over was lower in the Avalon Public Library service area than in Pennsylvania. During the period 2008-2012, 20.7 percent of residents had earned a Bachelor's degree or higher, compared with 27.0 percent statewide. A total of 307 or 8.6 percent had not completed high school, compared with 11.7 percent for the commonwealth as a whole.

Income and Poverty: Households with incomes of less than \$25,000 (35.1 percent) made up the largest percent of households in the Avalon Public Library service area in 2008-2012. For comparison, 23.6 percent of commonwealth households were in this range during the period.

In 2008-2012, the overall poverty rate for the Avalon Public Library service area was higher than Pennsylvania (17.7 percent compared to 13.1 percent). The poverty rate for the population under 18 years of age was 33.1 percent, compared with 17.0 percent of people 18 to 64 years and 8.0 percent for those aged 65 years and over. A total of 170 or 16.1 percent of all families had incomes below poverty level. In 2008-2012, 33.6 percent of families with related children and 83.6 percent of families with a female householder and no husband with related children present had incomes below the poverty level.

Class of Worker and Occupation: In 2008-2012, 89.4 percent of the workforce was private wage and salary workers; 5.3 percent were federal, state, or local government workers; and 5.3 percent were self-employed in their own (not incorporated) business.

The top occupation group for the civilian employed population 16 years and over in the Avalon Public Library service area in 2008-2012 was Sales and office (29.3 percent).

¹ Other race includes those who identified themselves as American Indian/Alaska Native, Asian, Native Hawaiian/Other Pacific Islander, Some Other Race and Two or More Races on the 2010 Census form.

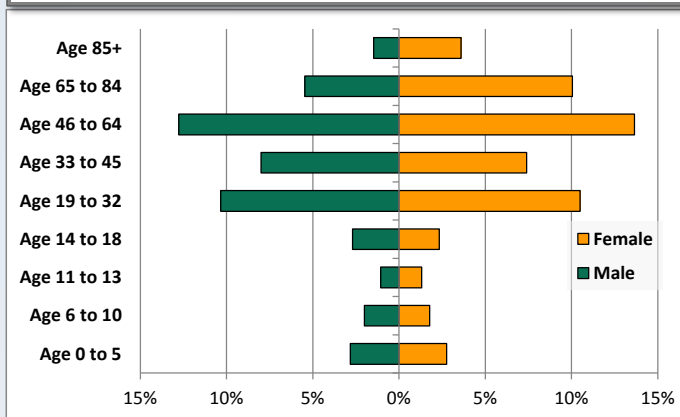
² People of Hispanic origin may be of any race.

Demographic Profile

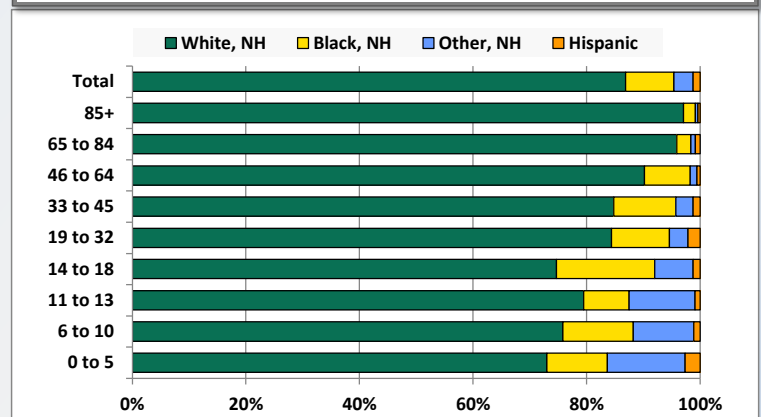
Avalon Public Library

Key Indicators		
	2000	2010
Population Growth		
Total Population	5,294	4,705
10-Year Growth	N/A	-11.1%
Diversity		
White Alone, Non-Hispanic	92.5%	86.8%
Black Alone, Non-Hispanic	4.8%	8.5%
Other Race Alone, Non-Hispanic	2.1%	3.4%
Percent Hispanic	0.6%	1.2%
Aging		
Percent 65 Years and Over	23.5%	20.6%
Households		
Percent Married Couple with Own Children	12.9%	8.7%
Percent Living Alone	45.4%	47.8%

Population by Library-Defined Age Group, 2010



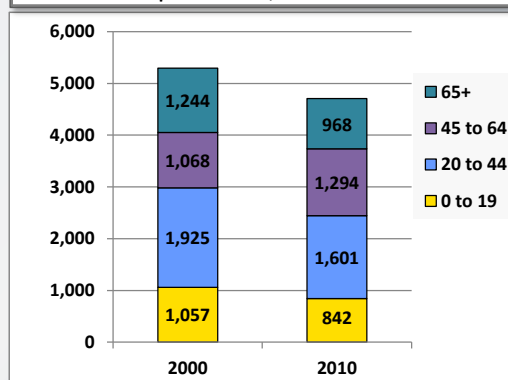
Race/Ethnicity by Library-Defined Age Group, 2010



Population Growth by Library-Defined Age Group, 2000 to 2010

Age Group	2010	Change	
		Numeric	Percent
Total	4,705	-589	-11.1%
85+	238	62	35.2%
65 to 84	730	-338	-31.6%
46 to 64	1,243	266	27.2%
33 to 45	724	-319	-30.6%
19 to 32	980	-31	-3.1%
14 to 18	237	-26	-9.9%
11 to 13	112	-52	-31.7%
6 to 10	178	-100	-36.0%
0 to 5	263	-51	-16.2%

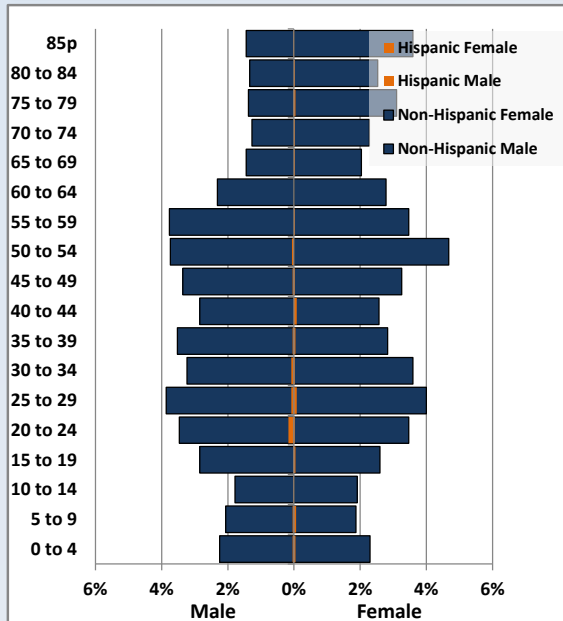
Population Total, 2000 and 2010



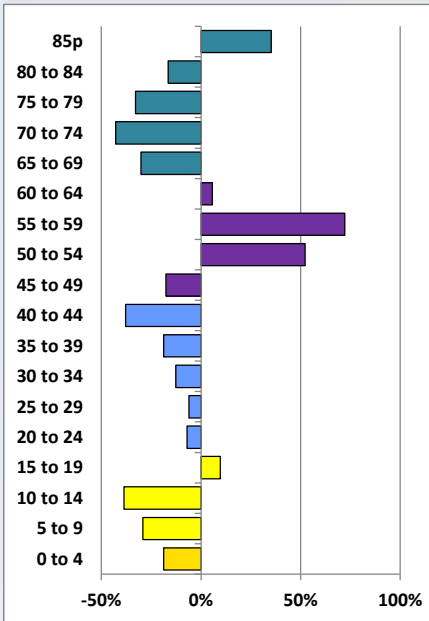
Demographic Profile

Avalon Public Library

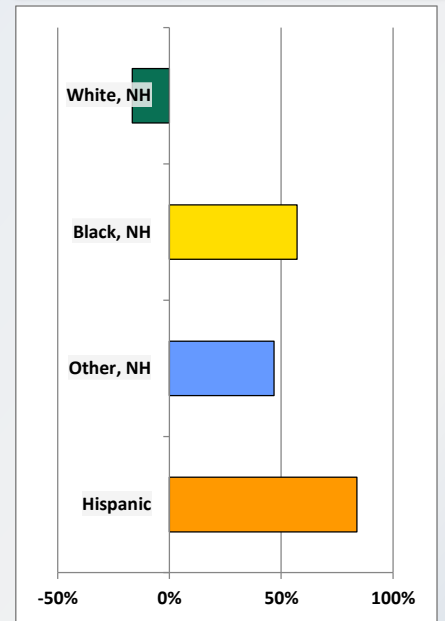
Population by 5-Year Age Cohorts



Pop Change by Age, 2000 to 2010

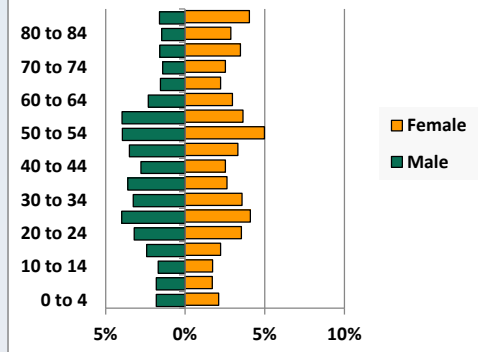


Pop Change by Race/Ethnicity, 2000 to 2010

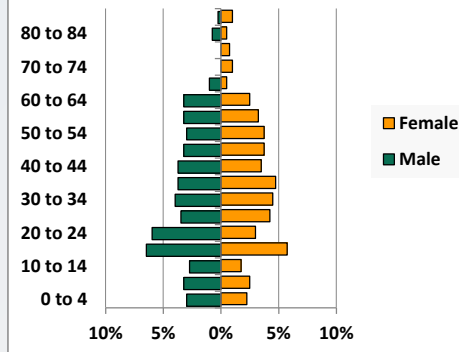


Population by Age, Race and Ethnicity 2010

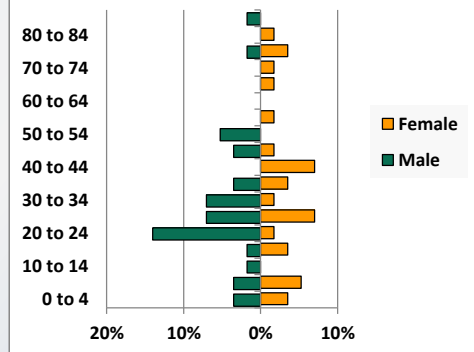
White, Not Hispanic



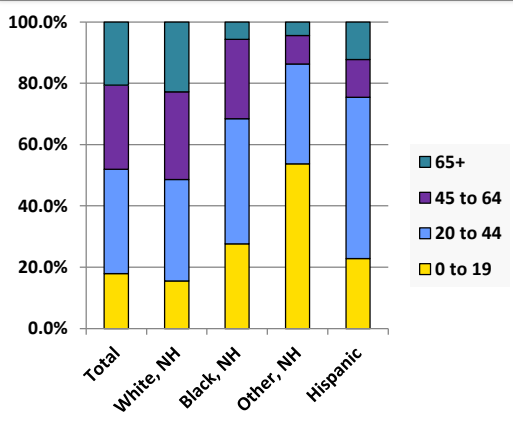
Black, Non-Hispanic



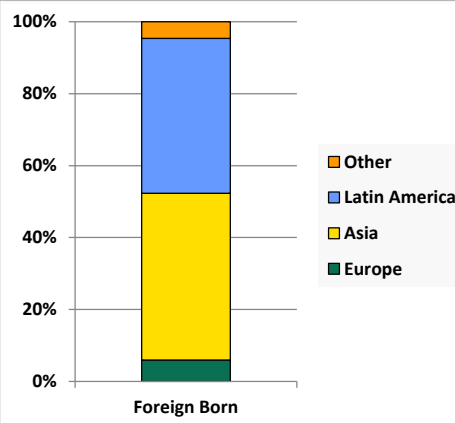
Hispanic



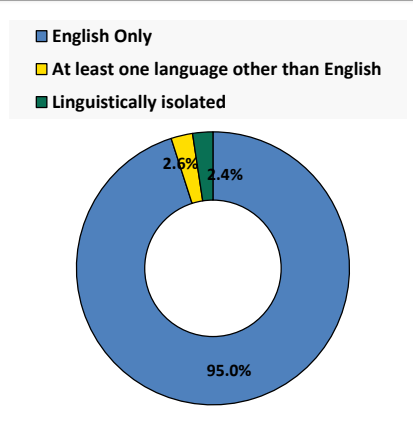
Age by Race and Ethnicity, 2010



Foreign Born, 2010



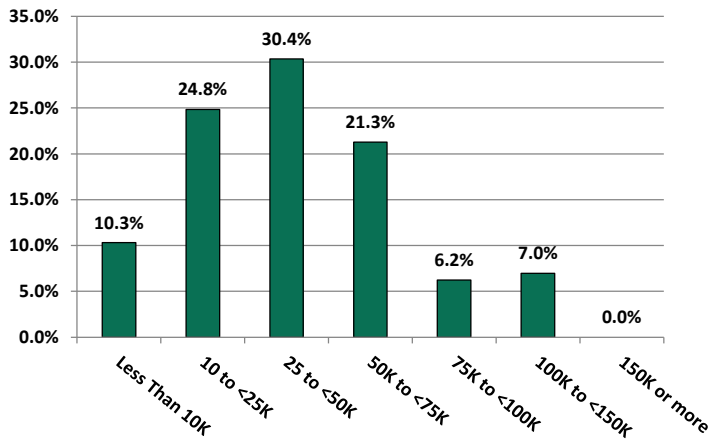
Household Language, 2010



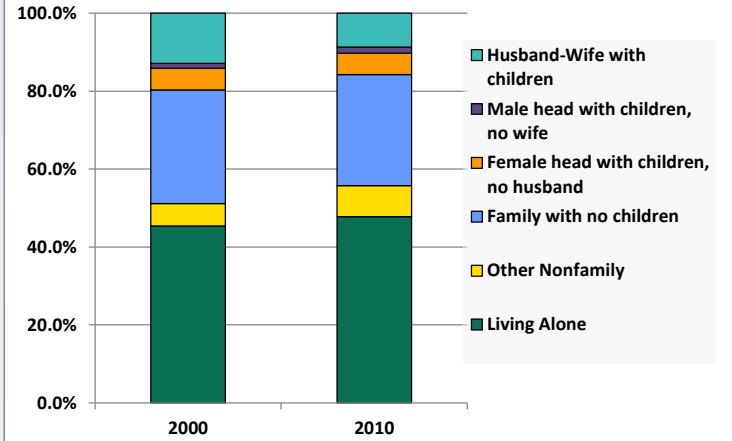
Demographic Profile

Avalon Public Library

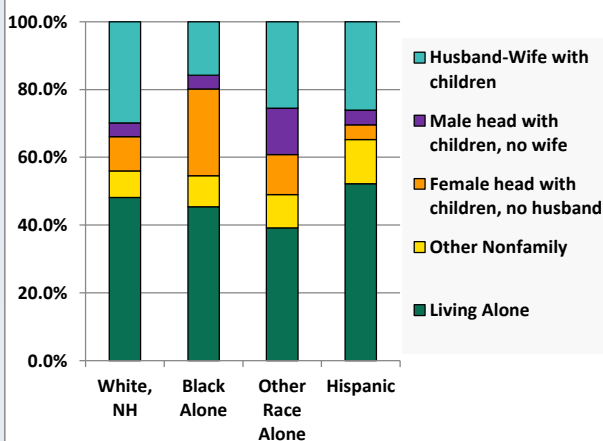
Household Income Distribution, 2008-2012



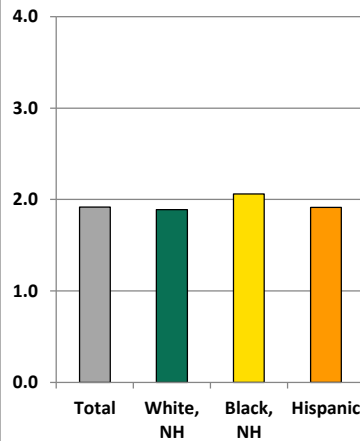
Household Type, 2000 and 2010



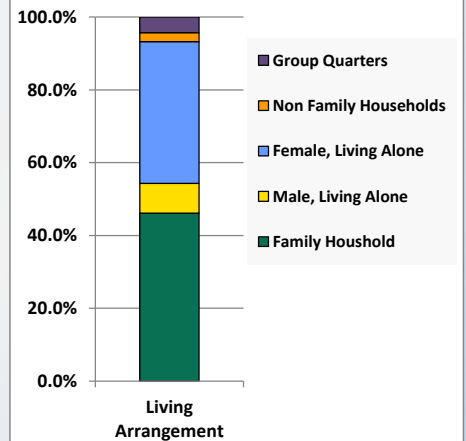
Household Type by Race/Ethnicity, 2010



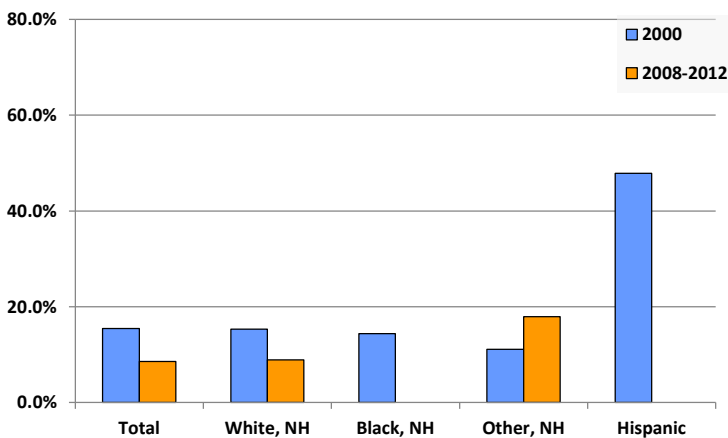
Average Household Size, 2010



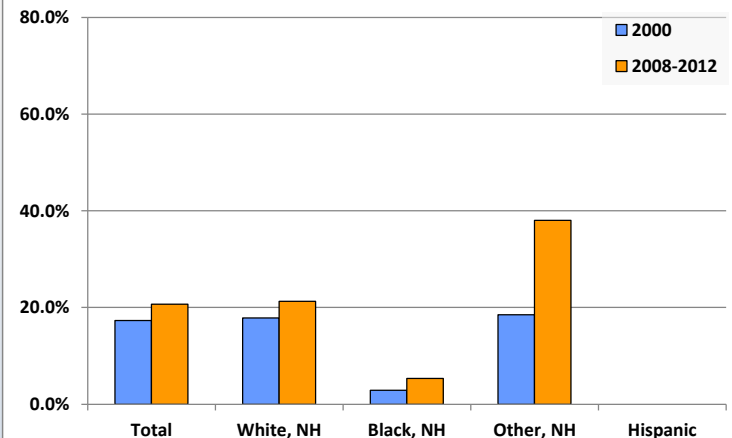
Living Arrangements 65+, 2008-2012



Percent of Adults that Did Not Complete High School



Percent of Adults Who Attained a Bachelor's Degree or Higher



Reference Data

Avalon Public Library

	Total Population	White, Non- Hispanic	Black, Non- Hispanic	Other, Non- Hispanic	Detail for Other, Non-Hispanic					
					AIAN	Asian	NHOPI	Some Other Race	Two or More Races	Hispanic or Latino
A. Total Population										
2000 Total	5,294	4,898	256	109	5	24	1	5	74	31
2000 pct of Total	100.0%	92.5%	4.8%	2.1%	0.1%	0.5%	0.0%	0.1%	1.4%	0.6%
2010 Total	4,705	4,086	402	160	15	25	0	6	114	57
2010 pct of Total	100.0%	86.8%	8.5%	3.4%	0.3%	0.5%	0.0%	0.1%	2.4%	1.2%
B. Population by Major Age Groups by Race and Ethnicity										
2000										
0-19	1,057	924	76	49	1	4	1	4	39	8
20-64	2,993	2,769	150	57	4	20	0	1	32	17
65+	1,244	1,205	30	3	0	0	0	0	3	6
85+	176	172	1	2	0	0	0	0	2	1
2010										
0-19	842	632	111	86	11	2	0	3	70	13
20-64	2,895	2,523	268	67	4	20	0	3	40	37
65+	968	931	23	7	0	3	0	0	4	7
85+	238	231	5	1	0	0	0	0	1	1
C. Age Mix for Each Racial and Ethnic Group										
2000										
0-19	20.0%	18.9%	29.7%	45.0%	20.0%	16.7%	100.0%	80.0%	52.7%	25.8%
20-64	56.5%	56.5%	58.6%	52.3%	80.0%	83.3%	0.0%	20.0%	43.2%	54.8%
65+	23.5%	24.6%	11.7%	2.8%	0.0%	0.0%	0.0%	0.0%	4.1%	19.4%
85+	3.3%	3.5%	0.4%	1.8%	0.0%	0.0%	0.0%	0.0%	2.7%	3.2%
2010										
0-19	17.9%	15.5%	27.6%	53.8%	73.3%	8.0%	0.0%	50.0%	61.4%	22.8%
20-64	61.5%	61.7%	66.7%	41.9%	26.7%	80.0%	0.0%	50.0%	35.1%	64.9%
65+	20.6%	22.8%	5.7%	4.4%	0.0%	12.0%	0.0%	0.0%	3.5%	12.3%
85+	5.1%	5.7%	1.2%	0.6%	0.0%	0.0%	0.0%	0.0%	0.9%	1.8%
D. Racial and Ethnic Composition of Each Age Group										
2000										
0-19	100.0%	87.4%	7.2%	4.6%	0.1%	0.4%	0.1%	0.4%	3.7%	0.8%
20-64	100.0%	92.5%	5.0%	1.9%	0.1%	0.7%	0.0%	0.0%	1.1%	0.6%
65+	100.0%	96.9%	2.4%	0.2%	0.0%	0.0%	0.0%	0.0%	0.2%	0.5%
85+	100.0%	97.7%	0.6%	1.1%	0.0%	0.0%	0.0%	0.0%	1.1%	0.6%
2010										
0-19	100.0%	75.1%	13.2%	10.2%	1.3%	0.2%	0.0%	0.4%	8.3%	1.5%
20-64	100.0%	87.2%	9.3%	2.3%	0.1%	0.7%	0.0%	0.1%	1.4%	1.3%
65+	100.0%	96.2%	2.4%	0.7%	0.0%	0.3%	0.0%	0.0%	0.4%	0.7%
85+	100.0%	97.1%	2.1%	0.4%	0.0%	0.0%	0.0%	0.0%	0.4%	0.4%
E. Population Growth										
2000-2010, Change										
0-19	-215	-292	35	37	10	-2	-1	-1	31	5
20-64	-98	-246	118	10	0	0	0	2	8	20
65+	-276	-274	-7	4	0	3	0	0	1	1
85+	62	59	4	-1	0	0	0	0	-1	0
Total	-589	-812	146	51	10	1	-1	1	40	26
2000-2010, Pct Change										
0-19	-20.3%	-31.6%	46.1%	75.5%	1000.0%	-50.0%	-100.0%	-25.0%	79.5%	62.5%
20-64	-3.3%	-8.9%	78.7%	17.5%	0.0%	0.0%	0.0%	200.0%	25.0%	117.6%
65+	-22.2%	-22.7%	-23.3%	133.3%	0.0%	0.0%	0.0%	0.0%	33.3%	16.7%
85+	35.2%	34.3%	400.0%	-50.0%	0.0%	0.0%	0.0%	0.0%	-50.0%	0.0%
Total	-11.1%	-16.6%	57.0%	46.8%	200.0%	4.2%	-100.0%	20.0%	54.1%	83.9%

Source: Decennial Census 2010, 2000, American Community Survey 2008-2012

Prepared for the Pennsylvania State Library by The Pennsylvania State Data Center, 9/2014

Reference Data

Avalon Public Library

					Detail for Other, Non-Hispanic					Hispanic or Latino
	Total Population	White, Non-Hispanic	Black, Non-Hispanic	Other, Non-Hispanic	AIAN	Asian	NHOPI	Some Other Race	Two or More Races	
F. Population by Library-Defined Age Groups, 2010										
0-5	263	192	28	36	11	0	0	1	24	7
6-10	178	135	22	19	0	0	0	1	18	2
11-13	112	89	9	13	0	1	0	1	11	1
14-18	237	177	41	16	0	1	0	0	15	3
19-32	980	827	100	32	1	10	0	2	19	21
33-45	724	614	79	22	2	7	0	1	12	9
46-64	1,243	1,121	100	15	1	3	0	0	11	7
65-84	730	700	18	6	0	3	0	0	3	6
85+	238	231	5	1	0	0	0	0	1	1
Total	4,705	4,086	402	160	15	25	0	6	114	57
G. Population by 5-Year Age Cohorts, 2010										
0-4	218	160	21	33	11	0	0	1	21	4
5-9	190	143	23	19	0	0	0	0	19	5
10-14	175	139	18	17	0	1	0	2	14	1
15-19	259	190	49	17	0	1	0	0	16	3
20-24	335	275	36	15	1	6	0	1	7	9
25-29	378	330	31	9	0	2	0	1	6	8
30-34	326	279	34	8	0	3	0	0	5	5
35-39	303	254	34	11	1	4	0	1	5	4
40-44	259	217	29	9	1	2	0	0	6	4
45-49	314	278	28	5	0	1	0	0	4	3
50-54	399	364	27	5	0	0	0	0	5	3
55-59	341	310	26	4	1	1	0	0	2	1
60-64	240	216	23	1	0	1	0	0	0	0
65-69	165	155	6	3	0	1	0	0	2	1
70-74	168	161	4	2	0	2	0	0	0	1
75-79	214	207	3	1	0	0	0	0	1	3
80-84	183	177	5	0	0	0	0	0	0	1
85-89	150	145	4	0	0	0	0	0	0	1
90-94	74	72	1	1	0	0	0	0	1	0
95-99	13	13	0	0	0	0	0	0	0	0
100+	1	1	0	0	0	0	0	0	0	0
Total	4,705	4,086	402	160	15	25	0	6	114	57

Source: Decennial Census 2010, 2000, American Community Survey 2008-2012

Prepared for the Pennsylvania State Library by The Pennsylvania State Data Center, 9/2014

Reference Data

Avalon Public Library

H. Income Distribution, 2008-2012

Range (in thousands)	Households	Pct of Total
<\$10K	250	10.3%
\$10K to <\$25K	602	24.8%
\$25K to <\$50K	736	30.4%
\$50K to <\$75K	516	21.3%
\$75K to <\$100K	151	6.2%
\$100K to <\$150K	169	7.0%
\$150K+	0	0.0%

I. Household Type, 2010

Household Type	2000	2000pct	2010	2010pct
Total Households	2,629	100.0%	2,411	100.0%
Family Households	1,283	48.8%	1,067	44.3%
Husband-wife, no children w/children	338	12.9%	210	8.7%
Female head, no husband, w/ children	146	5.6%	131	5.4%
Male head, no wife, w/ children	34	1.3%	38	1.6%
Without children	765	29.1%	688	28.5%
Nonfamily households	1,346	51.2%	1,344	55.7%
Living alone	1,194	45.4%	1,152	47.8%
Other nonfamily	152	5.8%	192	8.0%

J. Household Type by Race and Ethnicity, 2008-2012

Household Type	White, NH	Black, NH	Other, NH	Hispanic
Total Households	2,152	196	51	23
Husband wife family	29.9%	15.8%	25.5%	26.1%
Family with male head, no wife	4.0%	4.1%	13.7%	4.3%
family with female head, no husband	10.1%	25.5%	11.8%	4.3%
Living alone	48.2%	45.4%	39.2%	52.2%
Other nonfamily	7.8%	9.2%	9.8%	13.0%

K. Poverty, 2008-2012

Families	Poverty	PA
All families	16.1%	9.1%
Families w/ related children	33.6%	15.3%
Female householder, no husband present	38.9%	28.8%
Female householder, no husband present, w/ related children	83.6%	39.2%
All people	17.7%	13.1%
Under 18 years	33.1%	18.4%
18 to 64 years	17.0%	12.3%
65 years and over	8.0%	8.4%

L. Educational Attainment by Race and Ethnicity, 2008-2012

Education Level	White, NH	Black	Other	Hispanic	Total
Population 25 years and over	3,171	264	134	0	3,569
Less than high school	8.9%	0.0%	18%	0.0%	8.6%
High school graduate (includes equivalency)	41.6%	35.6%	4%	0.0%	39.8%
Some college or associates degree	28.2%	59.1%	40%	0.0%	30.9%
Bachelors degree or higher	21.3%	5.3%	38%	0.0%	20.7%

M. Occupation, 2008-2012

Occupation	Estimate	Percent
Civilian population age 16 years and over	2,406	100.0%
Management, professional, and related occupations	701	29.1%
Service occupations	605	25.1%
Sales and office occupations	705	29.3%
Farming, fishing, and forestry occupations	0	0.0%
Construction, extraction, maintenance, and repair occupations	117	4.9%
Production, transportation, and material moving occupations	278	11.6%

N. Class of Worker, 2008-2012

Occupation	Estimate	Percent
Civilian population age 16 years and over	2,406	100.0%
Private, for profit, wage and salary employee	1,776	73.8%
Private, not for profit, wage and salary employee	352	14.6%
Private, for profit, wage and salary self-employed in own business	23	1.0%
Government workers	127	5.3%
Self-employed in own not incorporated business	128	5.3%
Unpaid family workers in family business	0	0.0%