

## Demographic Profile Barrett Paradise Friendly Library

**Population Growth:** The total population of the Barrett Paradise Friendly Library service area increased by 13.1 percent over the past decade to 7,411; this growth rate was higher than the statewide rate of 3.4 percent.

**Age and Sex:** In 2010, the Barrett Paradise Friendly Library service area had a total population of 7,411 - 3,638 males (49.1 percent) and 3,773 females (50.9 percent). The age structure of the population in 2010 was as follows: 24.1 percent of the population was under 20 years old, 59.1 percent was 20 to 64 years old and 16.9 percent was 65 years or older.

**Race and Ethnicity:** For people reporting one race alone, not of Hispanic ethnicity, 83.5 percent were White; 6.0 percent were Black or African American; 3.1 percent were Other Race Alone.<sup>1</sup> A total of 549 or 7.4 percent of the population were Hispanic.<sup>2</sup>

**Households:** In 2010, there were 3,042 households in the Barrett Paradise Friendly Library service area. The average household size was 2.43 people. Families made up 65.4 percent of the households. This figure includes both families with (26.1 percent) and without (39.3 percent) children. Of families with children less than 18 years old, 18.4 percent were married-couple families, 5.5 percent were female householder families with no husband present, and the remaining (2.2 percent) were male-headed households with no wife present.

**Education:** The educational attainment of the population 25 years and over was higher in the Barrett Paradise Friendly Library service area than in Pennsylvania. During the period 2008-2012, 27.7 percent of residents had earned a Bachelor's degree or higher, compared with 27.0 percent statewide. A total of 500 or 9.6 percent had not completed high school, compared with 11.7 percent for the commonwealth as a whole.

**Income and Poverty:** Households with incomes of \$25,000 to \$49,999 (28.1 percent) made up the largest percent of households in the Barrett Paradise Friendly Library service area in 2008-2012. For comparison, 24.4 percent of commonwealth households were in this range during the period.

In 2008-2012, the overall poverty rate for the Barrett Paradise Friendly Library service area was lower than Pennsylvania (4.5 percent compared to 13.1 percent). The poverty rate for the population under 18 years of age was 2.7 percent, compared with 4.9 percent of people 18 to 64 years and 5.0 percent for those aged 65 years and over. A total of 52 or 2.7 percent of all families had incomes below poverty level. In 2008-2012, 2.9 percent of families with related children and 13.6 percent of families with a female householder and no husband with related children present had incomes below the poverty level.

**Class of Worker and Occupation:** In 2008-2012, 83.6 percent of the workforce was private wage and salary workers; 13.1 percent were federal, state, or local government workers; and 3.3 percent were self-employed in their own (not incorporated) business.

The top occupation group for the civilian employed population 16 years and over in the Barrett Paradise Friendly Library service area in 2008-2012 was Management, business, science, and arts (38.7 percent).

---

<sup>1</sup> Other race includes those who identified themselves as American Indian/Alaska Native, Asian, Native Hawaiian/Other Pacific Islander, Some Other Race and Two or More Races on the 2010 Census form.

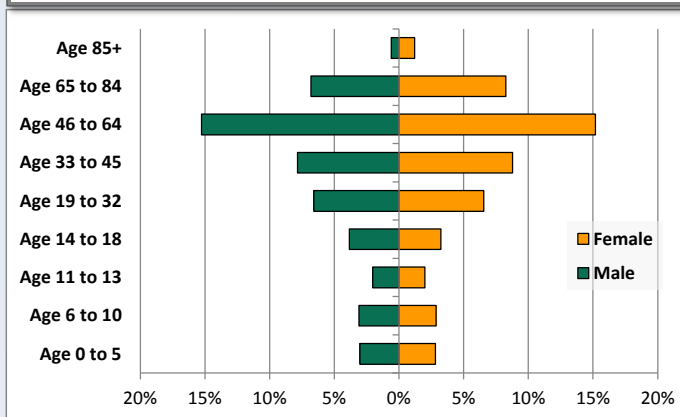
<sup>2</sup> People of Hispanic origin may be of any race.

# Demographic Profile

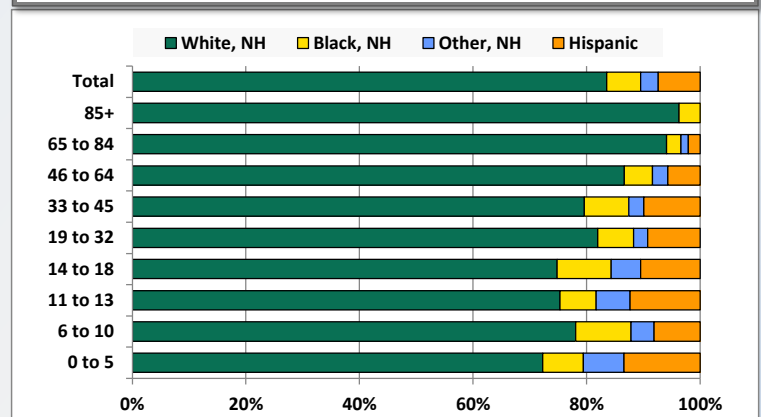
Barrett Paradise Friendly Library

Key Indicators		
	2000	2010
<b>Population Growth</b>		
Total Population	6,551	7,411
10-Year Growth	N/A	13.1%
<b>Diversity</b>		
White Alone, Non-Hispanic	93.1%	83.5%
Black Alone, Non-Hispanic	2.6%	6.0%
Other Race Alone, Non-Hispanic	2.0%	3.1%
Percent Hispanic	2.2%	7.4%
<b>Aging</b>		
Percent 65 Years and Over	15.5%	16.9%
<b>Households</b>		
Percent Married Couple with Own Children	23.5%	18.4%
Percent Living Alone	26.1%	27.9%

Population by Library-Defined Age Group, 2010



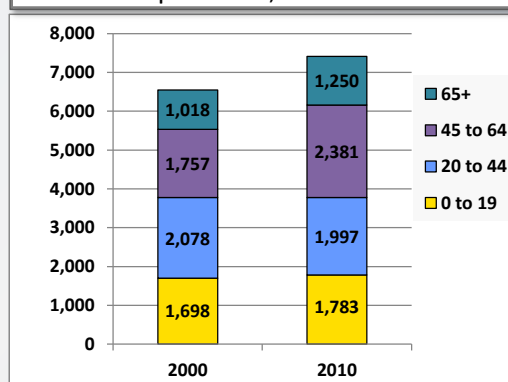
Race/Ethnicity by Library-Defined Age Group, 2010



Population Growth by Library-Defined Age Group, 2000 to 2010

Age Group	2010	Change	
		Numeric	Percent
Total	7,411	860	13.1%
85+	134	20	17.5%
65 to 84	1,116	212	23.5%
46 to 64	2,257	628	38.6%
33 to 45	1,232	-177	-12.6%
19 to 32	972	94	10.7%
14 to 18	524	50	10.5%
11 to 13	300	4	1.4%
6 to 10	443	-17	-3.7%
0 to 5	433	46	11.9%

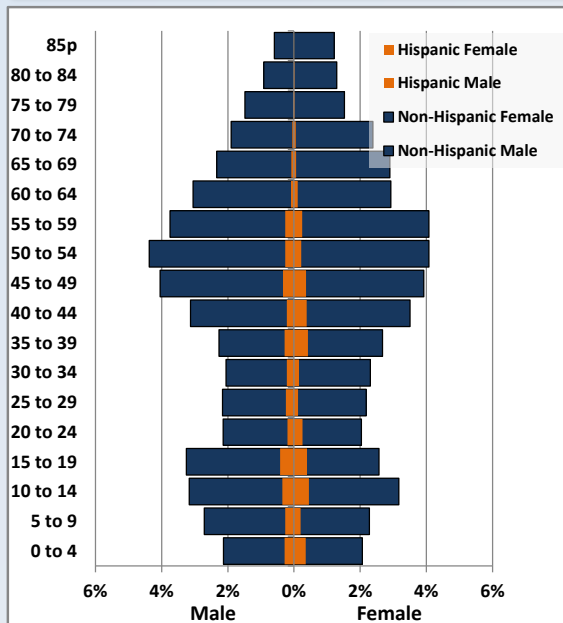
Population Total, 2000 and 2010



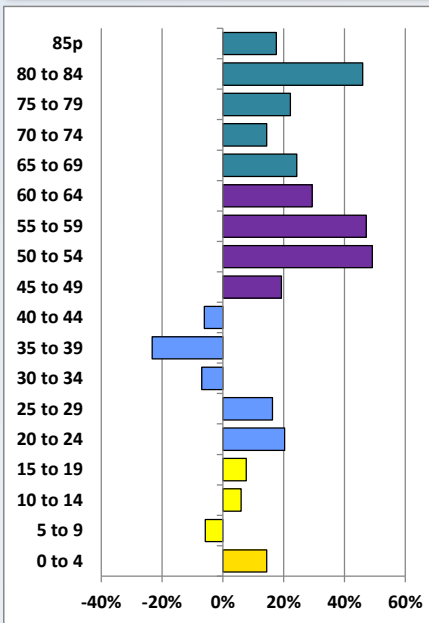
# Demographic Profile

Barrett Paradise Friendly Library

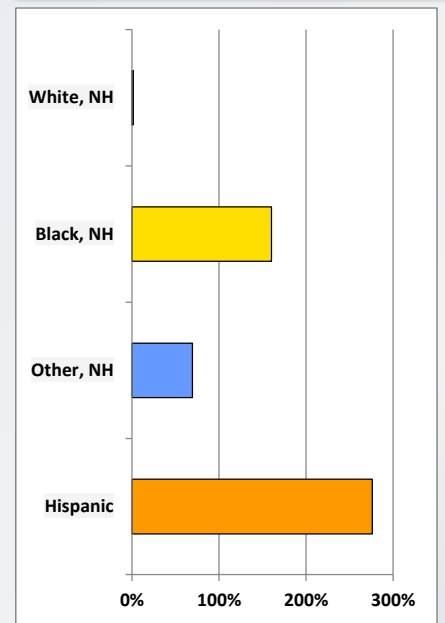
Population by 5-Year Age Cohorts



Pop Change by Age, 2000 to 2010

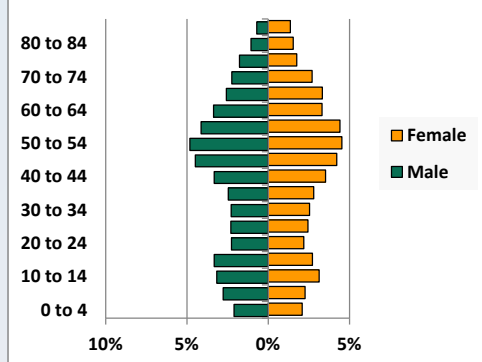


Pop Change by Race/Ethnicity, 2000 to 2010

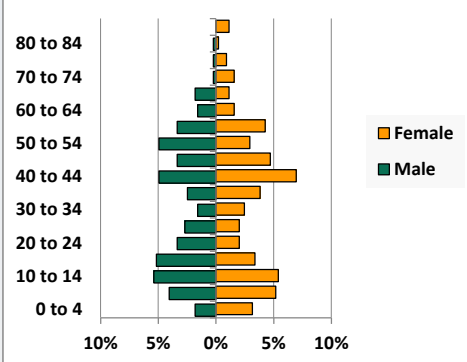


Population by Age, Race and Ethnicity 2010

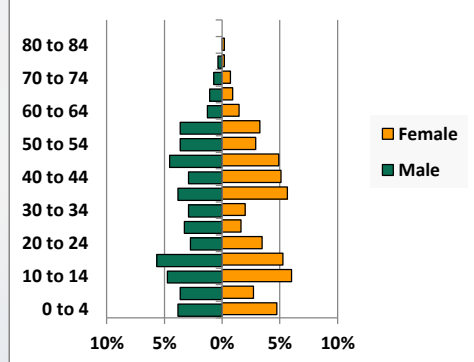
White, Not Hispanic



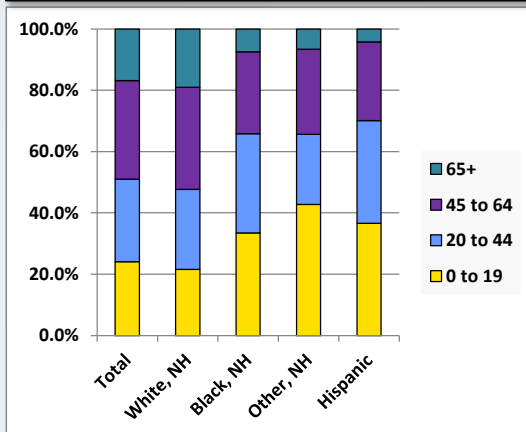
Black, Non-Hispanic



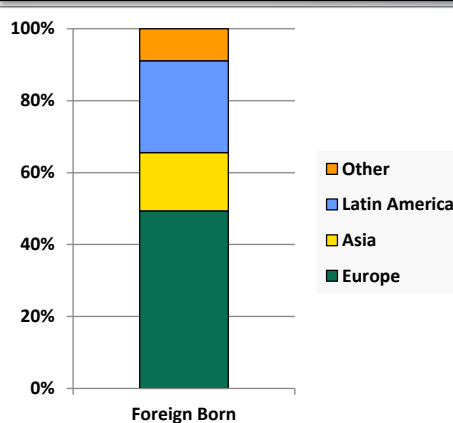
Hispanic



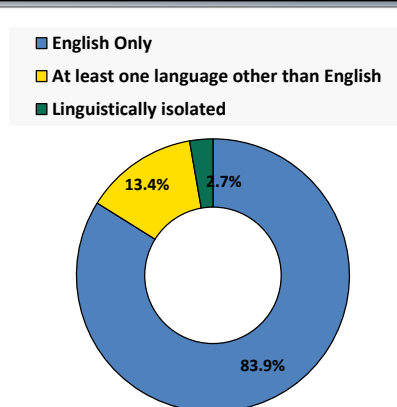
Age by Race and Ethnicity, 2010



Foreign Born, 2010



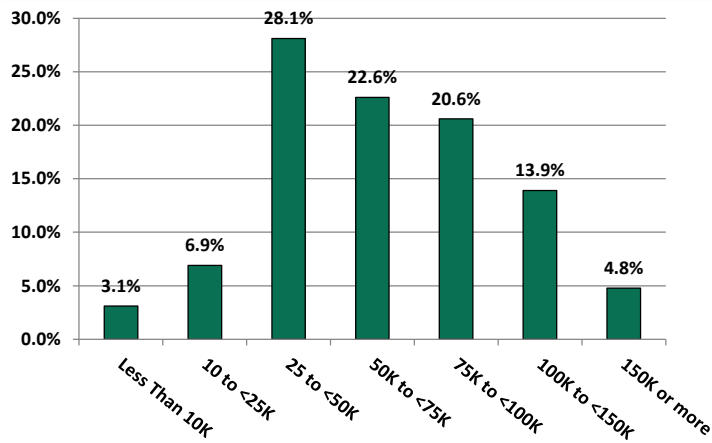
Household Language, 2010



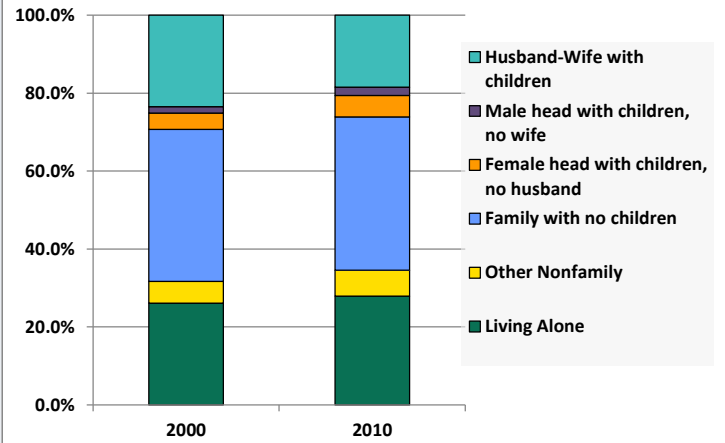
# Demographic Profile

Barrett Paradise Friendly Library

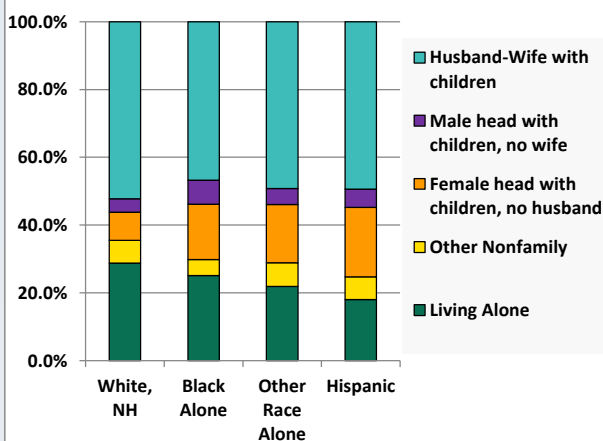
Household Income Distribution, 2008-2012



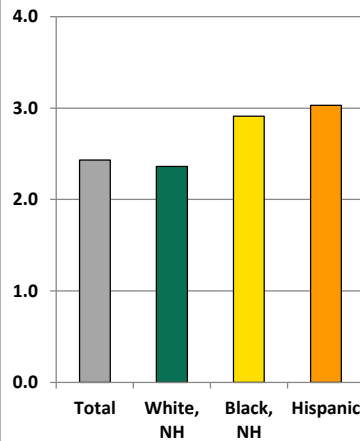
Household Type, 2000 and 2010



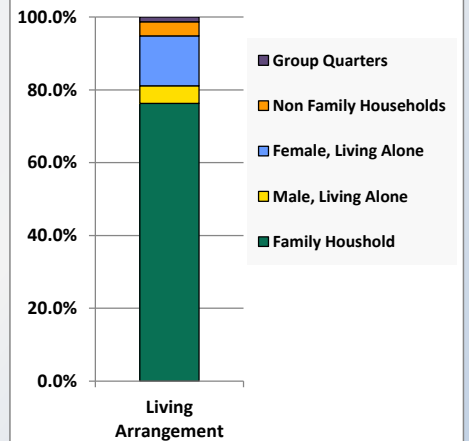
Household Type by Race/Ethnicity, 2010



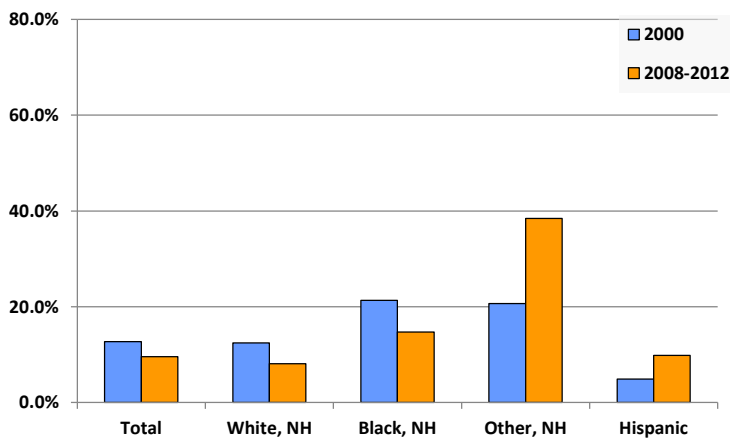
Average Household Size, 2010



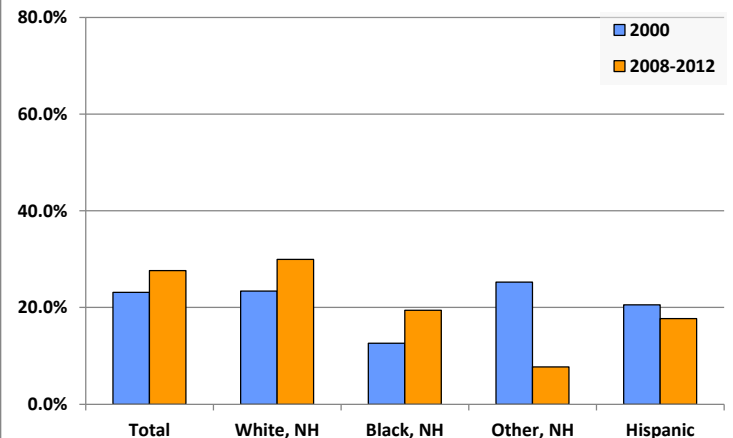
Living Arrangements 65+, 2008-2012



Percent of Adults that Did Not Complete High School



Percent of Adults Who Attained a Bachelor's Degree or Higher



# Reference Data

## Barrett Paradise Friendly Library

	Total Population	White, Non- Hispanic	Black, Non- Hispanic	Other, Non- Hispanic	Detail for Other, Non-Hispanic					Hispanic or Latino
					AIAN	Asian	NHOPI	Some Other Race	Two or More Races	
A. Total Population										
2000 Total	6,551	6,100	171	134	15	52	1	4	62	146
2000 pct of Total	100.0%	93.1%	2.6%	2.0%	0.2%	0.8%	0.0%	0.1%	0.9%	2.2%
2010 Total	7,411	6,190	445	227	14	67	5	17	124	549
2010 pct of Total	100.0%	83.5%	6.0%	3.1%	0.2%	0.9%	0.1%	0.2%	1.7%	7.4%
B. Population by Major Age Groups by Race and Ethnicity										
2000										
0-19	1,698	1,558	55	36	5	11	0	3	17	49
20-64	3,835	3,550	104	92	8	39	1	1	43	89
65+	1,018	992	12	6	2	2	0	0	2	8
85+	114	109	5	0	0	0	0	0	0	0
2010										
0-19	1,783	1,336	149	97	3	16	0	7	71	201
20-64	4,378	3,675	263	115	9	48	5	8	45	325
65+	1,250	1,179	33	15	2	3	0	2	8	23
85+	134	129	5	0	0	0	0	0	0	0
C. Age Mix for Each Racial and Ethnic Group										
2000										
0-19	25.9%	25.5%	32.2%	26.9%	33.3%	21.2%	0.0%	75.0%	27.4%	33.6%
20-64	58.5%	58.2%	60.8%	68.7%	53.3%	75.0%	100.0%	25.0%	69.4%	61.0%
65+	15.5%	16.3%	7.0%	4.5%	13.3%	3.8%	0.0%	0.0%	3.2%	5.5%
85+	1.7%	1.8%	2.9%	0.0%	0.0%	0.0%	0.0%	0.0%	0.0%	0.0%
2010										
0-19	24.1%	21.6%	33.5%	42.7%	21.4%	23.9%	0.0%	41.2%	57.3%	36.6%
20-64	59.1%	59.4%	59.1%	50.7%	64.3%	71.6%	100.0%	47.1%	36.3%	59.2%
65+	16.9%	19.0%	7.4%	6.6%	14.3%	4.5%	0.0%	11.8%	6.5%	4.2%
85+	1.8%	2.1%	1.1%	0.0%	0.0%	0.0%	0.0%	0.0%	0.0%	0.0%
D. Racial and Ethnic Composition of Each Age Group										
2000										
0-19	100.0%	91.8%	3.2%	2.1%	0.3%	0.6%	0.0%	0.2%	1.0%	2.9%
20-64	100.0%	92.6%	2.7%	2.4%	0.2%	1.0%	0.0%	0.0%	1.1%	2.3%
65+	100.0%	97.4%	1.2%	0.6%	0.2%	0.2%	0.0%	0.0%	0.2%	0.8%
85+	100.0%	95.6%	4.4%	0.0%	0.0%	0.0%	0.0%	0.0%	0.0%	0.0%
2010										
0-19	100.0%	74.9%	8.4%	5.4%	0.2%	0.9%	0.0%	0.4%	4.0%	11.3%
20-64	100.0%	83.9%	6.0%	2.6%	0.2%	1.1%	0.1%	0.2%	1.0%	7.4%
65+	100.0%	94.3%	2.6%	1.2%	0.2%	0.2%	0.0%	0.2%	0.6%	1.8%
85+	100.0%	96.3%	3.7%	0.0%	0.0%	0.0%	0.0%	0.0%	0.0%	0.0%
E. Population Growth										
2000-2010, Change										
0-19	85	-222	94	61	-2	5	0	4	54	152
20-64	543	125	159	23	1	9	4	7	2	236
65+	232	187	21	9	0	1	0	2	6	15
85+	20	20	0	0	0	0	0	0	0	0
Total	860	90	274	93	-1	15	4	13	62	403
2000-2010, Pct Change										
0-19	5.0%	-14.2%	170.9%	169.4%	-40.0%	45.5%	0.0%	133.3%	317.6%	310.2%
20-64	14.2%	3.5%	152.9%	25.0%	12.5%	23.1%	400.0%	700.0%	4.7%	265.2%
65+	22.8%	18.9%	175.0%	150.0%	0.0%	50.0%	0.0%	0.0%	300.0%	187.5%
85+	17.5%	18.3%	0.0%	0.0%	0.0%	0.0%	0.0%	0.0%	0.0%	0.0%
Total	13.1%	1.5%	160.2%	69.4%	-6.7%	28.8%	400.0%	325.0%	100.0%	276.0%

Source: Decennial Census 2010, 2000, American Community Survey 2008-2012

Prepared for the Pennsylvania State Library by The Pennsylvania State Data Center, 9/2014

# Reference Data

## Barrett Paradise Friendly Library

	Total Population	White, Non- Hispanic	Black, Non- Hispanic	Other, Non- Hispanic	Detail for Other, Non-Hispanic					Hispanic or Latino
					AIAN	Asian	NHOPI	Some Other	Two or More	
								Race	Races	
F. Population by Library-Defined Age Groups, 2010										
0-5	433	313	31	31	1	3	0	2	25	58
6-10	443	346	43	18	1	1	0	1	15	36
11-13	300	226	19	18	0	5	0	2	11	37
14-18	524	392	50	27	0	7	0	2	18	55
19-32	972	797	61	24	2	5	1	0	16	90
33-45	1,232	981	96	33	3	15	2	2	11	122
46-64	2,257	1,956	112	61	5	28	2	6	20	128
65-84	1,116	1,050	28	15	2	3	0	2	8	23
85+	134	129	5	0	0	0	0	0	0	0
Total	7,411	6,190	445	227	14	67	5	17	124	549
G. Population by 5-Year Age Cohorts, 2010										
0-4	358	260	22	29	1	2	0	2	24	47
5-9	405	312	41	17	1	2	0	1	13	35
10-14	529	390	48	32	0	7	0	3	22	59
15-19	491	374	38	19	1	5	0	1	12	60
20-24	344	276	24	10	0	3	0	0	7	34
25-29	349	293	21	8	1	2	1	0	4	27
30-34	350	298	18	7	1	0	0	0	6	27
35-39	418	325	28	13	1	7	1	2	2	52
40-44	536	425	53	14	0	7	1	0	6	44
45-49	643	538	36	17	2	7	0	1	7	52
50-54	662	578	35	13	2	6	0	1	4	36
55-59	618	529	34	17	0	8	2	2	5	38
60-64	458	413	14	16	2	8	0	2	4	15
65-69	399	365	13	10	2	1	0	2	5	11
70-74	326	306	8	4	0	2	0	0	2	8
75-79	226	218	5	0	0	0	0	0	0	3
80-84	165	161	2	1	0	0	0	0	1	1
85-89	92	89	3	0	0	0	0	0	0	0
90-94	29	27	2	0	0	0	0	0	0	0
95-99	11	11	0	0	0	0	0	0	0	0
100+	2	2	0	0	0	0	0	0	0	0
Total	7,411	6,190	445	227	14	67	5	17	124	549

Source: Decennial Census 2010, 2000, American Community Survey 2008-2012  
Prepared for the Pennsylvania State Library by The Pennsylvania State Data Center, 9/2014

# Reference Data

## Barrett Paradise Friendly Library

### H. Income Distribution, 2008-2012

Range (in thousands)	Households	Pct of Total
<\$10K	84	3.1%
\$10K to <\$25K	186	6.9%
\$25K to <\$50K	759	28.1%
\$50K to <\$75K	610	22.6%
\$75K to <\$100K	556	20.6%
\$100K to <\$150K	375	13.9%
\$150K+	129	4.8%

### I. Household Type, 2010

Household Type	2000	2000pct	2010	2010pct
Total Households	2,565	100.0%	3,042	100.0%
Family Households	1,751	68.3%	1,990	65.4%
Husband-wife, no children w/children	603	23.5%	561	18.4%
Female head, no husband, w/ children	107	4.2%	168	5.5%
Male head, no wife, w/ children	42	1.6%	66	2.2%
Without children	999	38.9%	1,195	39.3%
Nonfamily households	814	31.7%	1,052	34.6%
Living alone	670	26.1%	849	27.9%
Other nonfamily	144	5.6%	203	6.7%

### J. Household Type by Race and Ethnicity, 2008-2012

Household Type	White, NH	Black, NH	Other, NH	Hispanic
Total Households	2,658	171	128	166
Husband wife family	52.3%	46.8%	49.2%	49.4%
Family with male head, no wife	4.0%	7.0%	4.7%	5.4%
family with female head, no husband	8.3%	16.4%	17.2%	20.5%
Living alone	28.8%	25.1%	21.9%	18.1%
Other nonfamily	6.7%	4.7%	7.0%	6.6%

### K. Poverty, 2008-2012

Families	Poverty	PA
All families	2.7%	9.1%
Families w/ related children	2.9%	15.3%
Female householder, no husband present	7.1%	28.8%
Female householder, no husband present, w/ related children	13.6%	39.2%
All people	4.5%	13.1%
Under 18 years	2.7%	18.4%
18 to 64 years	4.9%	12.3%
65 years and over	5.0%	8.4%

### L. Educational Attainment by Race and Ethnicity, 2008-2012

Education Level	White, NH	Black	Other	Hispanic	Total
Population 25 years and over	4,338	170	182	530	5,207
Less than high school	8.1%	14.7%	38%	9.8%	9.6%
High school graduate (includes equivalency)	34.8%	20.6%	47%	40.8%	35.4%
Some college or associates degree	27.2%	45.3%	7%	31.7%	27.3%
Bachelors degree or higher	29.9%	19.4%	8%	17.7%	27.7%

### M. Occupation, 2008-2012

Occupation	Estimate	Percent
Civilian population age 16 years and over	3,673	100.0%
Management, professional, and related occupations	1,423	38.7%
Service occupations	669	18.2%
Sales and office occupations	766	20.9%
Farming, fishing, and forestry occupations	37	1.0%
Construction, extraction, maintenance, and repair occupations	202	5.5%
Production, transportation, and material moving occupations	576	15.7%

### N. Class of Worker, 2008-2012

Occupation	Estimate	Percent
Civilian population age 16 years and over	3,673	100.0%
Private, for profit, wage and salary employee	2,632	71.7%
Private, not for profit, wage and salary employee	359	9.8%
Private, for profit, wage and salary self-employed in own business	80	2.2%
Government workers	482	13.1%
Self-employed in own not incorporated business	120	3.3%
Unpaid family workers in family business	0	0.0%