

Demographic Profile Bellwood Antis Public Library

Population Growth: The total population of the Bellwood Antis Public Library service area decreased by - .2 percent over the past decade to 8,327; this decline rate was lower than the statewide rate of 3.4 percent.

Age and Sex: In 2010, the Bellwood Antis Public Library service area had a total population of 8,327 - 4,042 males (48.5 percent) and 4,285 females (51.5 percent). The age structure of the population in 2010 was as follows: 23.1 percent of the population was under 20 years old, 57.4 percent was 20 to 64 years old and 19.5 percent was 65 years or older.

Race and Ethnicity: For people reporting one race alone, not of Hispanic ethnicity, 98.3 percent were White; .3 percent were Black or African American; .7 percent were Other Race Alone.¹ A total of 51 or .6 percent of the population were Hispanic.²

Households: In 2010, there were 3,445 households in the Bellwood Antis Public Library service area. The average household size was 2.39 people. Families made up 70.0 percent of the households. This figure includes both families with (26.0 percent) and without (43.9 percent) children. Of families with children less than 18 years old, 19.1 percent were married-couple families, 4.8 percent were female householder families with no husband present, and the remaining (2.1 percent) were male-headed households with no wife present.

Education: The educational attainment of the population 25 years and over was lower in the Bellwood Antis Public Library service area than in Pennsylvania. During the period 2008-2012, 17.2 percent of residents had earned a Bachelor's degree or higher, compared with 27.0 percent statewide. A total of 368 or 6.2 percent had not completed high school, compared with 11.7 percent for the commonwealth as a whole.

Income and Poverty: Households with incomes of \$50,000 to \$74,999 (28.8 percent) made up the largest percent of households in the Bellwood Antis Public Library service area in 2008-2012. For comparison, 18.7 percent of commonwealth households were in this range during the period.

In 2008-2012, the overall poverty rate for the Bellwood Antis Public Library service area was lower than Pennsylvania (7.6 percent compared to 13.1 percent). The poverty rate for the population under 18 years of age was 7.8 percent, compared with 6.5 percent of people 18 to 64 years and 11.6 percent for those aged 65 years and over. A total of 112 or 4.8 percent of all families had incomes below poverty level. In 2008-2012, 8.3 percent of families with related children and 23.6 percent of families with a female householder and no husband with related children present had incomes below the poverty level.

Class of Worker and Occupation: In 2008-2012, 77.5 percent of the workforce was private wage and salary workers; 18.7 percent were federal, state, or local government workers; and 3.9 percent were self-employed in their own (not incorporated) business.

The top occupation group for the civilian employed population 16 years and over in the Bellwood Antis Public Library service area in 2008-2012 was Management, business, science, and arts (32.1 percent).

¹ Other race includes those who identified themselves as American Indian/Alaska Native, Asian, Native Hawaiian/Other Pacific Islander, Some Other Race and Two or More Races on the 2010 Census form.

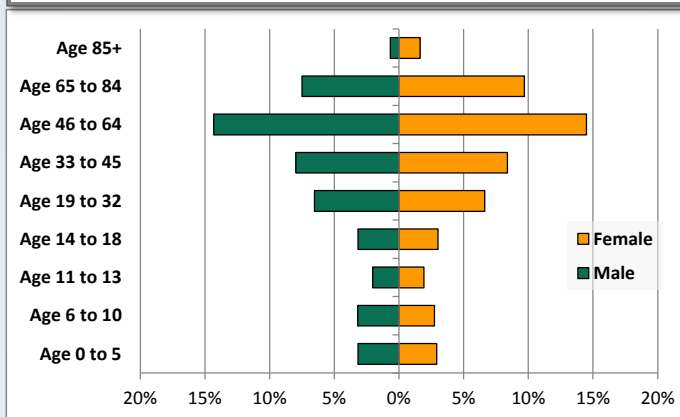
² People of Hispanic origin may be of any race.

Demographic Profile

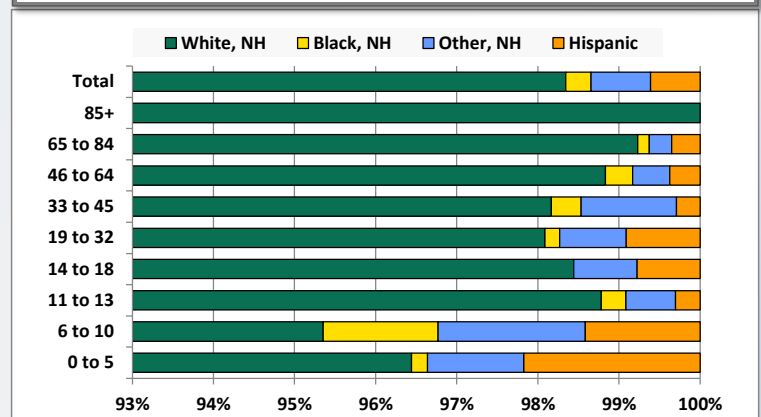
Bellwood Antis Public Library

Key Indicators		
	2000	2010
Population Growth		
Total Population	8,344	8,327
10-Year Growth	N/A	-0.2%
Diversity		
White Alone, Non-Hispanic	98.7%	98.3%
Black Alone, Non-Hispanic	0.1%	0.3%
Other Race Alone, Non-Hispanic	0.8%	0.7%
Percent Hispanic	0.4%	0.6%
Aging		
Percent 65 Years and Over	15.9%	19.5%
Households		
Percent Married Couple with Own Children	25.0%	19.1%
Percent Living Alone	22.7%	25.8%

Population by Library-Defined Age Group, 2010



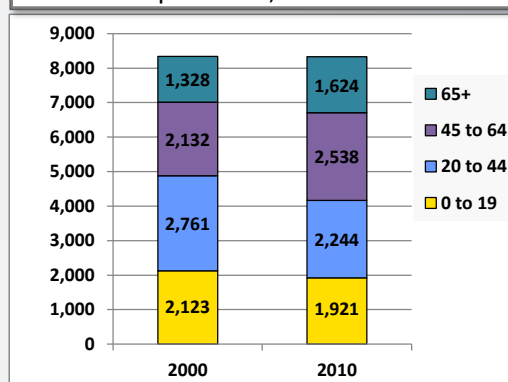
Race/Ethnicity by Library-Defined Age Group, 2010



Population Growth by Library-Defined Age Group, 2000 to 2010

Age Group	2010	Change	
		Numeric	Percent
Total	8,327	-17	-0.2%
85+	192	71	58.7%
65 to 84	1,432	225	18.6%
46 to 64	2,401	399	19.9%
33 to 45	1,362	-354	-20.6%
19 to 32	1,097	-175	-13.8%
14 to 18	514	-69	-11.8%
11 to 13	328	-20	-5.7%
6 to 10	495	-58	-10.5%
0 to 5	506	-36	-6.6%

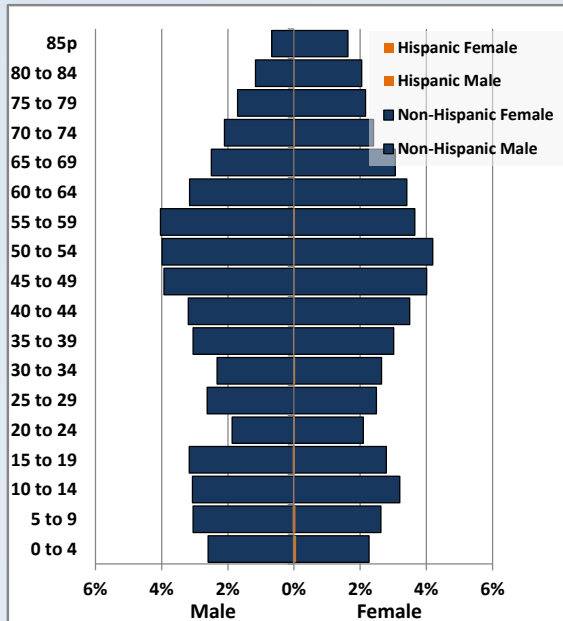
Population Total, 2000 and 2010



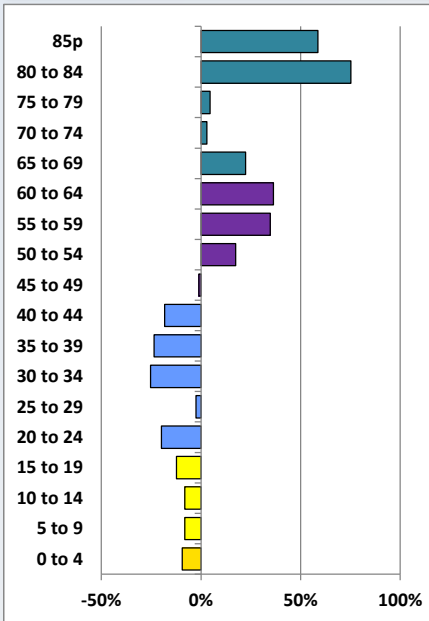
Demographic Profile

Bellwood Antis Public Library

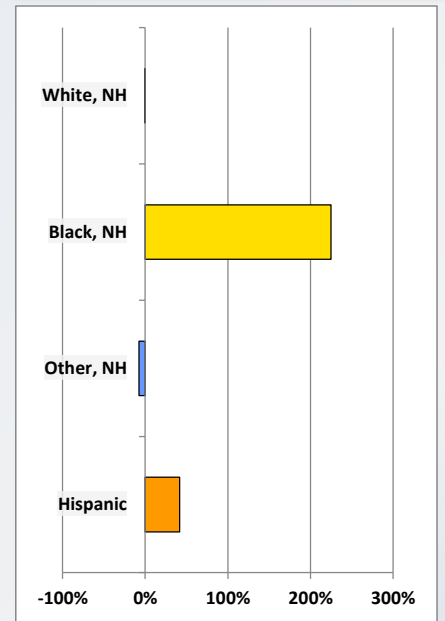
Population by 5-Year Age Cohorts



Pop Change by Age, 2000 to 2010

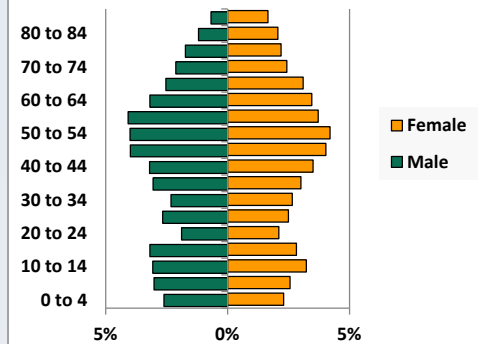


Pop Change by Race/Ethnicity, 2000 to 2010

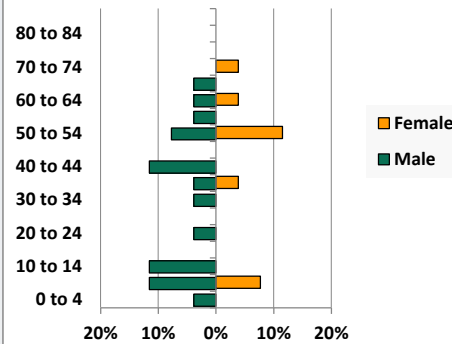


Population by Age, Race and Ethnicity 2010

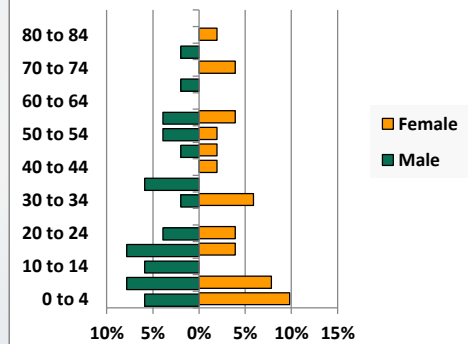
White, Not Hispanic



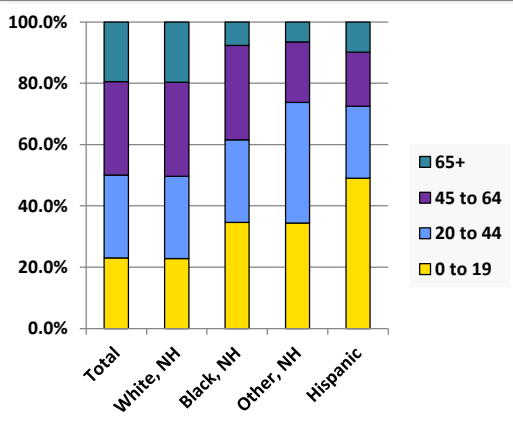
Black, Non-Hispanic



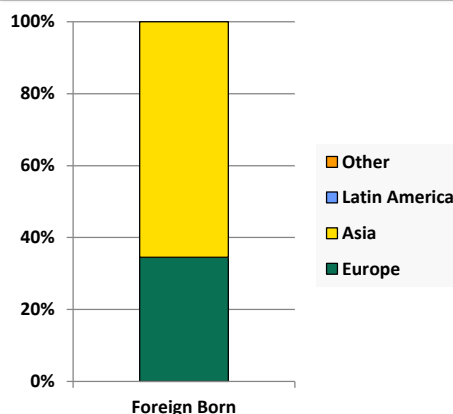
Hispanic



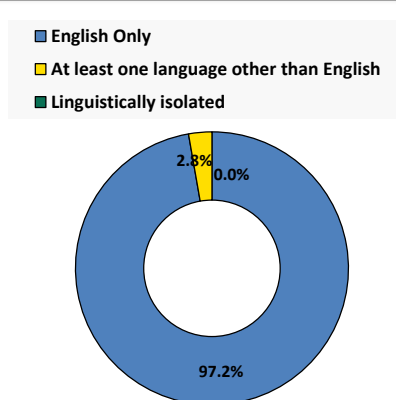
Age by Race and Ethnicity, 2010



Foreign Born, 2010



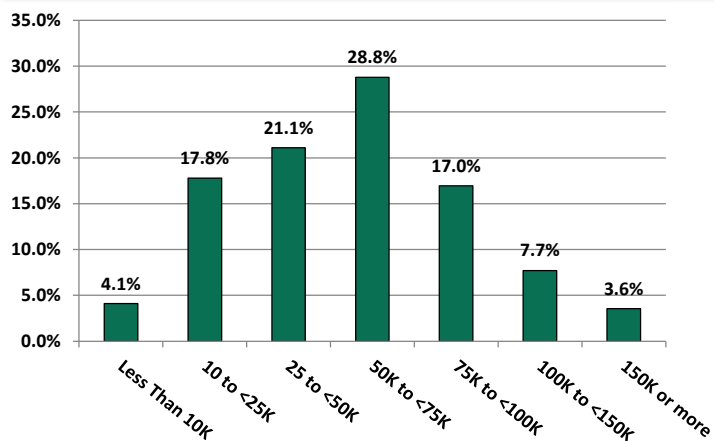
Household Language, 2010



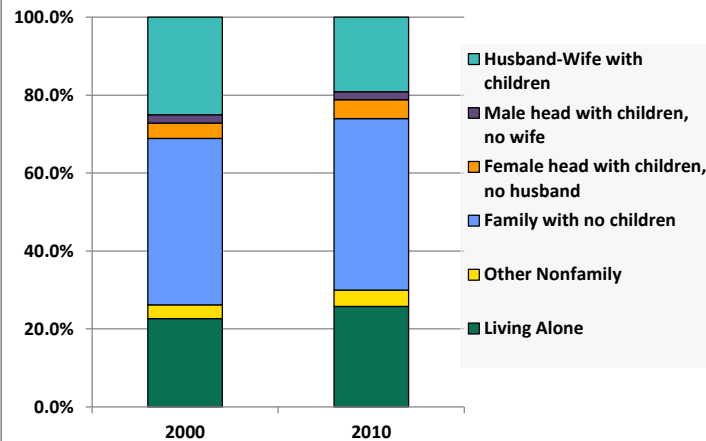
Demographic Profile

Bellwood Antis Public Library

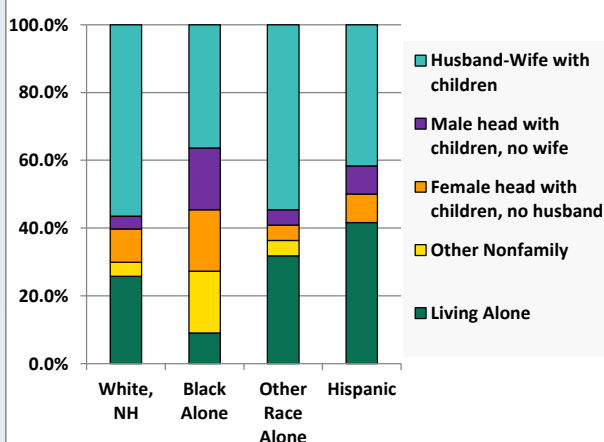
Household Income Distribution, 2008-2012



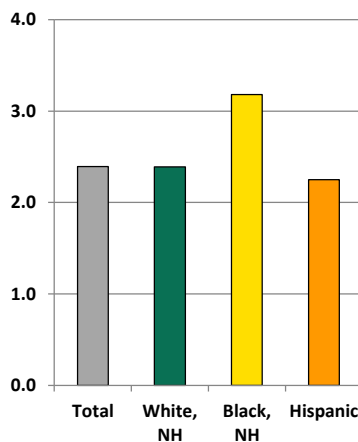
Household Type, 2000 and 2010



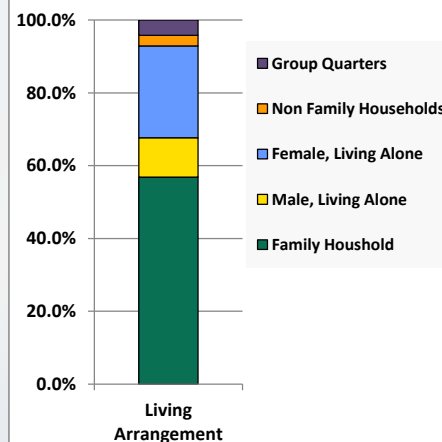
Household Type by Race/Ethnicity, 2010



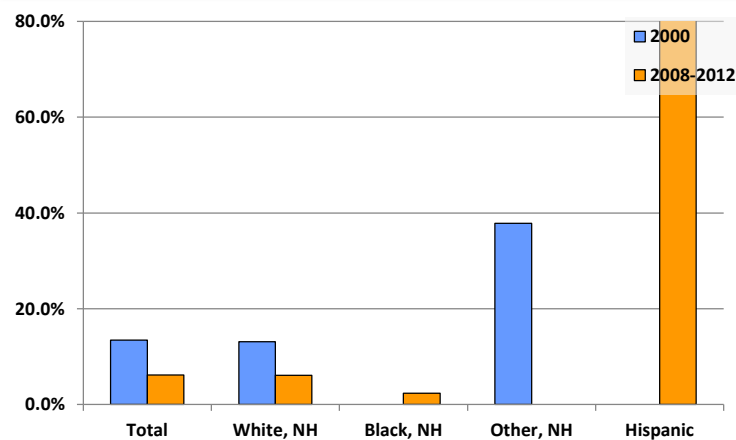
Average Household Size, 2010



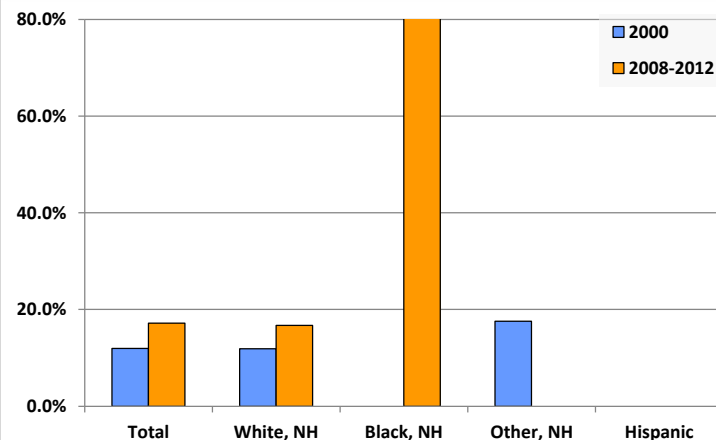
Living Arrangements 65+, 2008-2012



Percent of Adults that Did Not Complete High School



Percent of Adults Who Attained a Bachelor's Degree or Higher



Reference Data

Bellwood Antis Public Library

	Total Population	White, Non- Hispanic	Black, Non- Hispanic	Other, Non- Hispanic	Detail for Other, Non-Hispanic					Hispanic or Latino
					AIAN	Asian	NHOPI	Some Other Race	Two or More Races	
A. Total Population										
2000 Total	8,344	8,234	8	66	11	15	1	3	36	36
2000 pct of Total	100.0%	98.7%	0.1%	0.8%	0.1%	0.2%	0.0%	0.0%	0.4%	0.4%
2010 Total	8,327	8,189	26	61	7	12	3	0	39	51
2010 pct of Total	100.0%	98.3%	0.3%	0.7%	0.1%	0.1%	0.0%	0.0%	0.5%	0.6%
B. Population by Major Age Groups by Race and Ethnicity										
2000										
0-19	2,123	2,084	2	22	3	4	1	0	14	15
20-64	4,893	4,833	6	36	7	10	0	3	16	18
65+	1,328	1,317	0	8	1	1	0	0	6	3
85+	121	119	0	2	0	0	0	0	2	0
2010										
0-19	1,921	1,866	9	21	0	1	3	0	17	25
20-64	4,782	4,710	15	36	6	9	0	0	21	21
65+	1,624	1,613	2	4	1	2	0	0	1	5
85+	192	192	0	0	0	0	0	0	0	0
C. Age Mix for Each Racial and Ethnic Group										
2000										
0-19	25.4%	25.3%	25.0%	33.3%	27.3%	26.7%	100.0%	0.0%	38.9%	41.7%
20-64	58.6%	58.7%	75.0%	54.5%	63.6%	66.7%	0.0%	100.0%	44.4%	50.0%
65+	15.9%	16.0%	0.0%	12.1%	9.1%	6.7%	0.0%	0.0%	16.7%	8.3%
85+	1.5%	1.4%	0.0%	3.0%	0.0%	0.0%	0.0%	0.0%	5.6%	0.0%
2010										
0-19	23.1%	22.8%	34.6%	34.4%	0.0%	8.3%	100.0%	0.0%	43.6%	49.0%
20-64	57.4%	57.5%	57.7%	59.0%	85.7%	75.0%	0.0%	0.0%	53.8%	41.2%
65+	19.5%	19.7%	7.7%	6.6%	14.3%	16.7%	0.0%	0.0%	2.6%	9.8%
85+	2.3%	2.3%	0.0%	0.0%	0.0%	0.0%	0.0%	0.0%	0.0%	0.0%
D. Racial and Ethnic Composition of Each Age Group										
2000										
0-19	100.0%	98.2%	0.1%	1.0%	0.1%	0.2%	0.0%	0.0%	0.7%	0.7%
20-64	100.0%	98.8%	0.1%	0.7%	0.1%	0.2%	0.0%	0.1%	0.3%	0.4%
65+	100.0%	99.2%	0.0%	0.6%	0.1%	0.1%	0.0%	0.0%	0.5%	0.2%
85+	100.0%	98.3%	0.0%	1.7%	0.0%	0.0%	0.0%	0.0%	1.7%	0.0%
2010										
0-19	100.0%	97.1%	0.5%	1.1%	0.0%	0.1%	0.2%	0.0%	0.9%	1.3%
20-64	100.0%	98.5%	0.3%	0.8%	0.1%	0.2%	0.0%	0.0%	0.4%	0.4%
65+	100.0%	99.3%	0.1%	0.2%	0.1%	0.1%	0.0%	0.0%	0.1%	0.3%
85+	100.0%	100.0%	0.0%	0.0%	0.0%	0.0%	0.0%	0.0%	0.0%	0.0%
E. Population Growth										
2000-2010, Change										
0-19	-202	-218	7	-1	-3	-3	2	0	3	10
20-64	-111	-123	9	0	-1	-1	0	-3	5	3
65+	296	296	2	-4	0	1	0	0	-5	2
85+	71	73	0	-2	0	0	0	0	-2	0
Total	-17	-45	18	-5	-4	-3	2	-3	3	15
2000-2010, Pct Change										
0-19	-9.5%	-10.5%	350.0%	-4.5%	-100.0%	-75.0%	200.0%	0.0%	21.4%	66.7%
20-64	-2.3%	-2.5%	150.0%	0.0%	-14.3%	-10.0%	0.0%	-100.0%	31.3%	16.7%
65+	22.3%	22.5%	0.0%	-50.0%	0.0%	100.0%	0.0%	0.0%	-83.3%	66.7%
85+	58.7%	61.3%	0.0%	-100.0%	0.0%	0.0%	0.0%	0.0%	-100.0%	0.0%
Total	-0.2%	-0.5%	225.0%	-7.6%	-36.4%	-20.0%	200.0%	-100.0%	8.3%	41.7%

Source: Decennial Census 2010, 2000, American Community Survey 2008-2012

Prepared for the Pennsylvania State Library by The Pennsylvania State Data Center, 9/2014

Reference Data

Bellwood Antis Public Library

	Total Population	White, Non- Hispanic	Black, Non- Hispanic	Other, Non- Hispanic	Detail for Other, Non-Hispanic					Hispanic or Latino
					AIAN	Asian	NHOPI	Some Other Race	Two or More Races	
F. Population by Library-Defined Age Groups, 2010										
0-5	506	488	1	6	0	0	0	0	6	11
6-10	495	472	7	9	0	1	3	0	5	7
11-13	328	324	1	2	0	0	0	0	2	1
14-18	514	506	0	4	0	0	0	0	4	4
19-32	1,097	1,076	2	9	0	4	0	0	5	10
33-45	1,362	1,337	5	16	4	3	0	0	9	4
46-64	2,401	2,373	8	11	2	2	0	0	7	9
65-84	1,432	1,421	2	4	1	2	0	0	1	5
85+	192	192	0	0	0	0	0	0	0	0
Total	8,327	8,189	26	61	7	12	3	0	39	51
G. Population by 5-Year Age Cohorts, 2010										
0-4	413	401	1	3	0	0	0	0	3	8
5-9	481	457	5	11	0	0	3	0	8	8
10-14	525	516	3	3	0	1	0	0	2	3
15-19	502	492	0	4	0	0	0	0	4	6
20-24	334	326	1	3	0	3	0	0	0	4
25-29	426	423	0	3	0	1	0	0	2	0
30-34	418	407	1	6	0	0	0	0	6	4
35-39	508	496	2	7	2	2	0	0	3	3
40-44	558	549	3	5	2	1	0	0	2	1
45-49	663	656	0	5	0	2	0	0	3	2
50-54	684	671	5	5	2	0	0	0	3	3
55-59	644	638	1	1	0	0	0	0	1	4
60-64	547	544	2	1	0	0	0	0	1	0
65-69	464	461	1	1	0	1	0	0	0	1
70-74	377	373	1	1	0	0	0	0	1	2
75-79	323	321	0	1	1	0	0	0	0	1
80-84	268	266	0	1	0	1	0	0	0	1
85-89	140	140	0	0	0	0	0	0	0	0
90-94	38	38	0	0	0	0	0	0	0	0
95-99	14	14	0	0	0	0	0	0	0	0
100+	0	0	0	0	0	0	0	0	0	0
Total	8,327	8,189	26	61	7	12	3	0	39	51

Source: Decennial Census 2010, 2000, American Community Survey 2008-2012

Prepared for the Pennsylvania State Library by The Pennsylvania State Data Center, 9/2014

Reference Data

Bellwood Antis Public Library

H. Income Distribution, 2008-2012

Range (in thousands)	Households	Pct of Total
<\$10K	137	4.1%
\$10K to <\$25K	595	17.8%
\$25K to <\$50K	705	21.1%
\$50K to <\$75K	962	28.8%
\$75K to <\$100K	567	17.0%
\$100K to <\$150K	258	7.7%
\$150K+	119	3.6%

I. Household Type, 2010

Household Type	2000	2000pct	2010	2010pct
Total Households	3,306	100.0%	3,445	100.0%
Family Households	2,441	73.8%	2,411	70.0%
Husband-wife, no children w/children	828	25.0%	659	19.1%
Female head, no husband, w/ children	130	3.9%	167	4.8%
Male head, no wife, w/ children	70	2.1%	71	2.1%
Without children	1,413	42.7%	1,514	43.9%
Nonfamily households	865	26.2%	1,034	30.0%
Living alone	749	22.7%	889	25.8%
Other nonfamily	116	3.5%	145	4.2%

J. Household Type by Race and Ethnicity, 2008-2012

Household Type	White, NH	Black, NH	Other, NH	Hispanic
Total Households	3,403	11	22	12
Husband wife family	56.5%	36.4%	54.5%	41.7%
Family with male head, no wife	3.8%	18.2%	4.5%	8.3%
family with female head, no husband	9.8%	18.2%	4.5%	8.3%
Living alone	25.8%	9.1%	31.8%	41.7%
Other nonfamily	4.2%	18.2%	4.5%	0.0%

K. Poverty, 2008-2012

Families	Poverty	PA
All families	4.8%	9.1%
Families w/ related children	8.3%	15.3%
Female householder, no husband present	13.9%	28.8%
Female householder, no husband present, w/ related children	23.6%	39.2%
All people	7.6%	13.1%
Under 18 years	7.8%	18.4%
18 to 64 years	6.5%	12.3%
65 years and over	11.6%	8.4%

L. Educational Attainment by Race and Ethnicity, 2008-2012

Education Level	White, NH	Black	Other	Hispanic	Total
Population 25 years and over	5,846	42	38	9	5,935
Less than high school	6.1%	2.4%	0%	100.0%	6.2%
High school graduate (includes equivalency)	47.3%	0.0%	100%	0.0%	47.2%
Some college or associates degree	29.8%	0.0%	0%	0.0%	29.4%
Bachelors degree or higher	16.7%	97.6%	0%	0.0%	17.2%

M. Occupation, 2008-2012

Occupation	Estimate	Percent
Civilian population age 16 years and over	4,024	100.0%
Management, professional, and related occupations	1,291	32.1%
Service occupations	711	17.7%
Sales and office occupations	982	24.4%
Farming, fishing, and forestry occupations	3	0.1%
Construction, extraction, maintenance, and repair occupations	399	9.9%
Production, transportation, and material moving occupations	638	15.9%

N. Class of Worker, 2008-2012

Occupation	Estimate	Percent
Civilian population age 16 years and over	4,024	100.0%
Private, for profit, wage and salary employee	2,728	67.8%
Private, not for profit, wage and salary employee	300	7.5%
Private, for profit, wage and salary self-employed in own business	90	2.2%
Government workers	751	18.7%
Self-employed in own not incorporated business	155	3.9%
Unpaid family workers in family business	0	0.0%