

Demographic Profile Bentleyville Public Library

Population Growth: The total population of the Bentleyville Public Library service area decreased by -2.1 percent over the past decade to 8,553; this decline rate was lower than the statewide rate of 3.4 percent.

Age and Sex: In 2010, the Bentleyville Public Library service area had a total population of 8,553 - 4,219 males (49.3 percent) and 4,334 females (50.7 percent). The age structure of the population in 2010 was as follows: 23.3 percent of the population was under 20 years old, 59.6 percent was 20 to 64 years old and 17.1 percent was 65 years or older.

Race and Ethnicity: For people reporting one race alone, not of Hispanic ethnicity, 96.7 percent were White; 1.4 percent were Black or African American; 1.3 percent were Other Race Alone.¹ A total of 53 or .6 percent of the population were Hispanic.²

Households: In 2010, there were 3,596 households in the Bentleyville Public Library service area. The average household size was 2.36 people. Families made up 66.3 percent of the households. This figure includes both families with (26.1 percent) and without (40.2 percent) children. Of families with children less than 18 years old, 16.9 percent were married-couple families, 7.1 percent were female householder families with no husband present, and the remaining (2.1 percent) were male-headed households with no wife present.

Education: The educational attainment of the population 25 years and over was lower in the Bentleyville Public Library service area than in Pennsylvania. During the period 2008-2012, 19.8 percent of residents had earned a Bachelor's degree or higher, compared with 27.0 percent statewide. A total of 671 or 11.2 percent had not completed high school, compared with 11.7 percent for the commonwealth as a whole.

Income and Poverty: Households with incomes of less than \$25,000 (28.1 percent) made up the largest percent of households in the Bentleyville Public Library service area in 2008-2012. For comparison, 23.6 percent of commonwealth households were in this range during the period.

In 2008-2012, the overall poverty rate for the Bentleyville Public Library service area was higher than Pennsylvania (13.9 percent compared to 13.1 percent). The poverty rate for the population under 18 years of age was 22.3 percent, compared with 13.8 percent of people 18 to 64 years and 5.0 percent for those aged 65 years and over. A total of 254 or 10.9 percent of all families had incomes below poverty level. In 2008-2012, 22.3 percent of families with related children and 52.8 percent of families with a female householder and no husband with related children present had incomes below the poverty level.

Class of Worker and Occupation: In 2008-2012, 80.6 percent of the workforce was private wage and salary workers; 13.0 percent were federal, state, or local government workers; and 6.0 percent were self-employed in their own (not incorporated) business.

The top occupation group for the civilian employed population 16 years and over in the Bentleyville Public Library service area in 2008-2012 was Management, business, science, and arts (30.8 percent).

¹ Other race includes those who identified themselves as American Indian/Alaska Native, Asian, Native Hawaiian/Other Pacific Islander, Some Other Race and Two or More Races on the 2010 Census form.

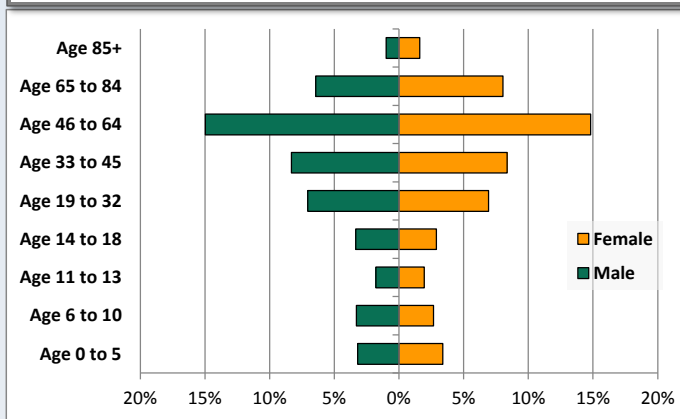
² People of Hispanic origin may be of any race.

Demographic Profile

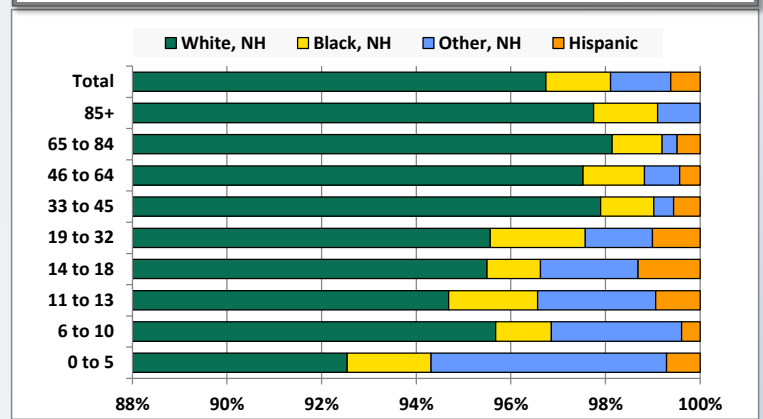
Bentleyville Public Library

Key Indicators		
	2000	2010
Population Growth		
Total Population	8,737	8,553
10-Year Growth	N/A	-2.1%
Diversity		
White Alone, Non-Hispanic	97.8%	96.7%
Black Alone, Non-Hispanic	0.8%	1.4%
Other Race Alone, Non-Hispanic	1.1%	1.3%
Percent Hispanic	0.4%	0.6%
Aging		
Percent 65 Years and Over	18.0%	17.1%
Households		
Percent Married Couple with Own Children	21.0%	16.9%
Percent Living Alone	27.0%	28.6%

Population by Library-Defined Age Group, 2010



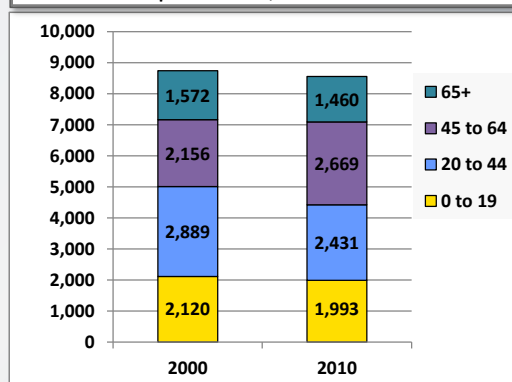
Race/Ethnicity by Library-Defined Age Group, 2010



Population Growth by Library-Defined Age Group, 2000 to 2010

Age Group	2010	Change	
		Numeric	Percent
Total	8,553	-184	-2.1%
85+	222	71	47.0%
65 to 84	1,238	-183	-12.9%
46 to 64	2,549	533	26.4%
33 to 45	1,425	-321	-18.4%
19 to 32	1,194	-175	-12.8%
14 to 18	533	-39	-6.8%
11 to 13	320	2	0.6%
6 to 10	509	-18	-3.4%
0 to 5	563	-54	-8.8%

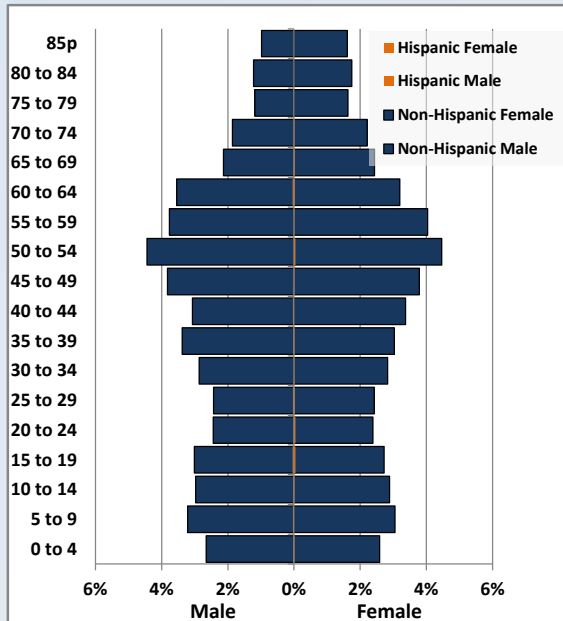
Population Total, 2000 and 2010



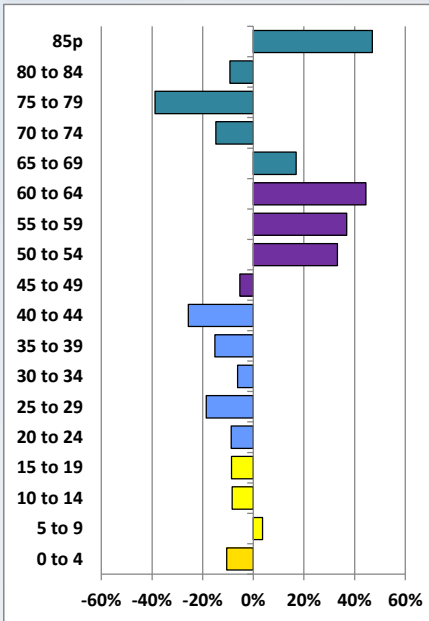
Demographic Profile

Bentleyville Public Library

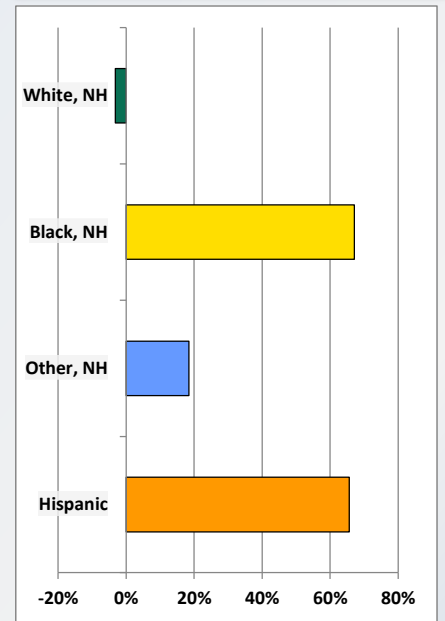
Population by 5-Year Age Cohorts



Pop Change by Age, 2000 to 2010

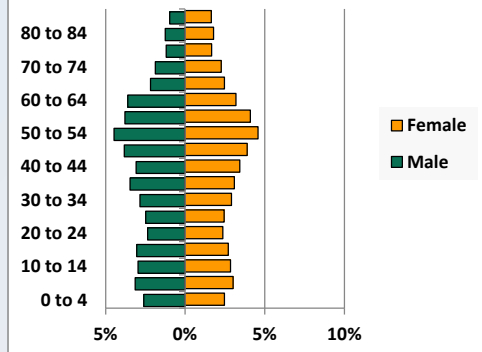


Pop Change by Race/Ethnicity, 2000 to 2010

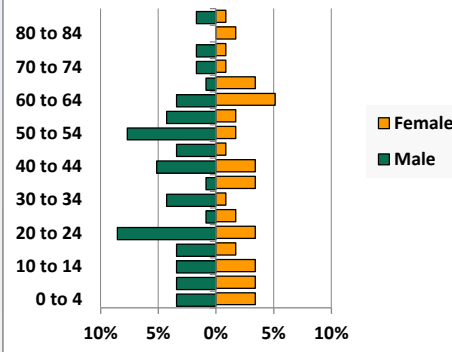


Population by Age, Race and Ethnicity 2010

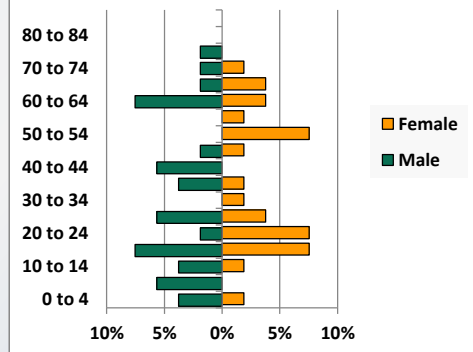
White, Not Hispanic



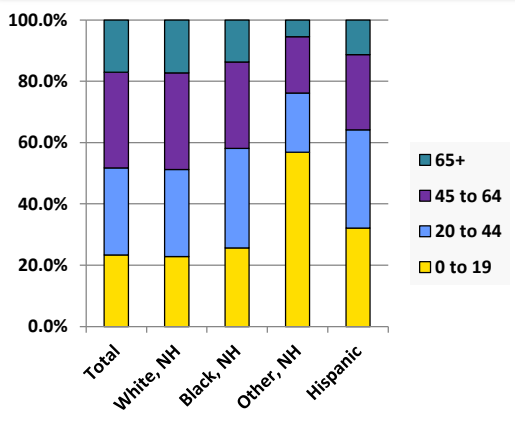
Black, Non-Hispanic



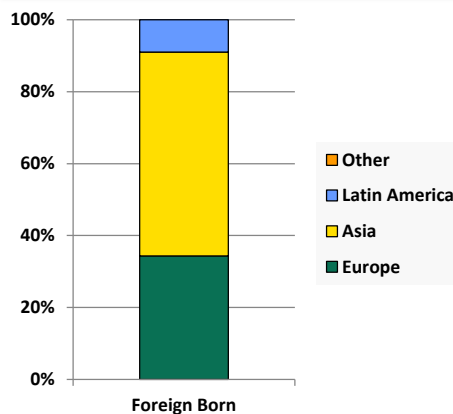
Hispanic



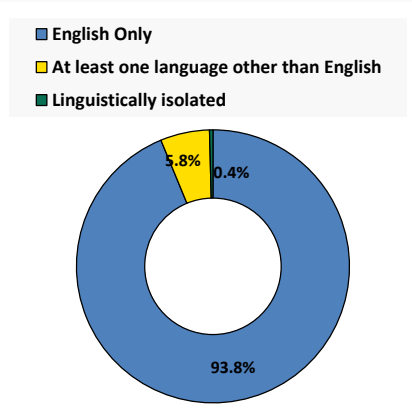
Age by Race and Ethnicity, 2010



Foreign Born, 2010



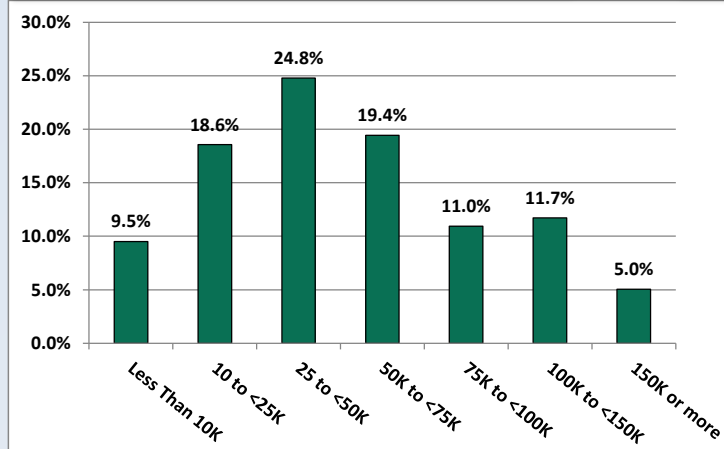
Household Language, 2010



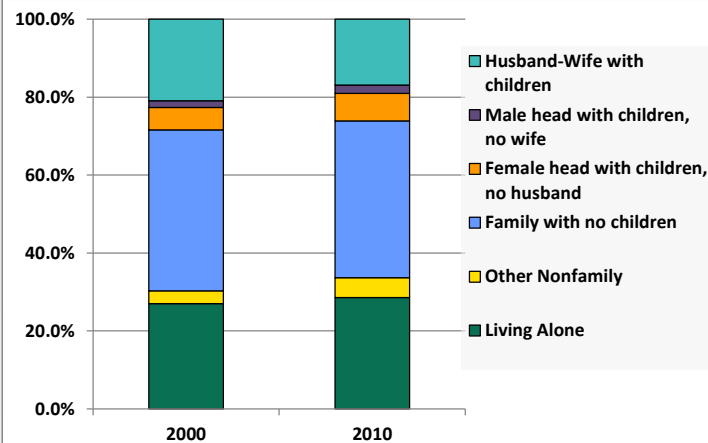
Demographic Profile

Bentleyville Public Library

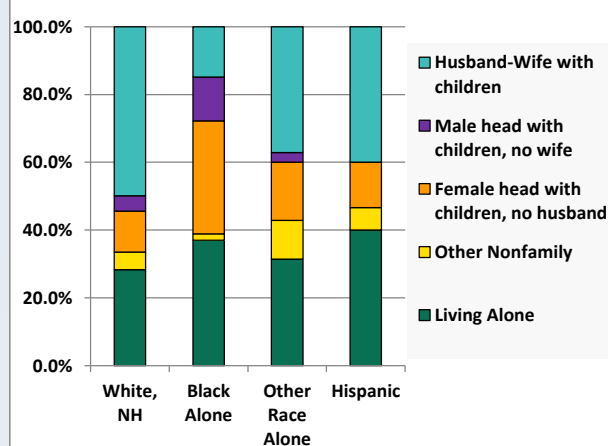
Household Income Distribution, 2008-2012



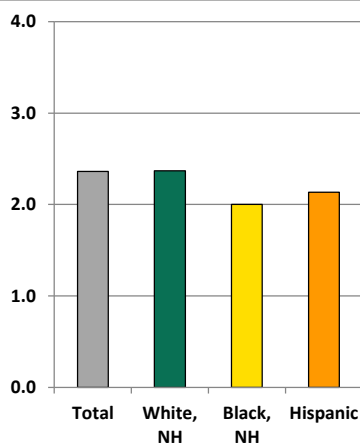
Household Type, 2000 and 2010



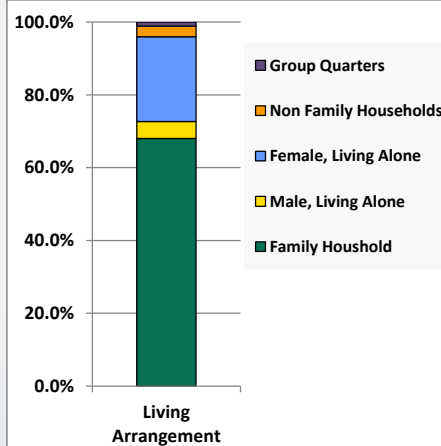
Household Type by Race/Ethnicity, 2010



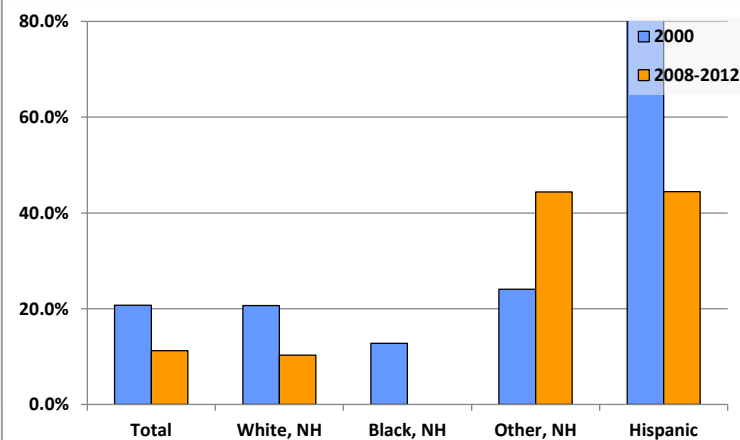
Average Household Size, 2010



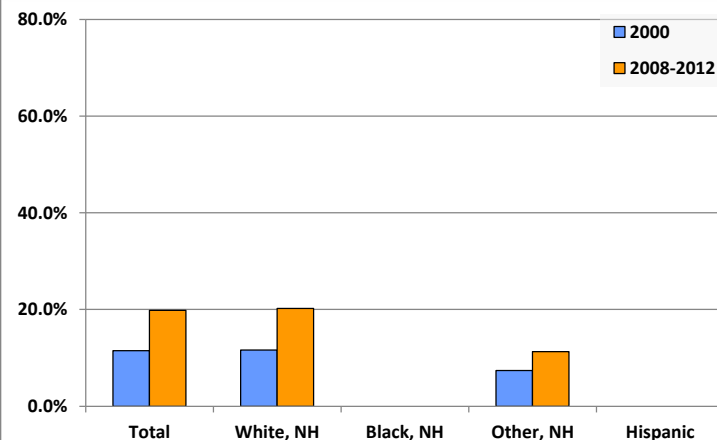
Living Arrangements 65+, 2008-2012



Percent of Adults that Did Not Complete High School



Percent of Adults Who Attained a Bachelor's Degree or Higher



Reference Data

Bentleyville Public Library

	Total Population	White, Non- Hispanic	Black, Non- Hispanic	Other, Non- Hispanic	Detail for Other, Non-Hispanic					Hispanic or Latino
					AIAN	Asian	NHOPI	Some Other Race	Two or More Races	
A. Total Population										
2000 Total	8,737	8,543	70	92	3	9	0	7	73	32
2000 pct of Total	100.0%	97.8%	0.8%	1.1%	0.0%	0.1%	0.0%	0.1%	0.8%	0.4%
2010 Total	8,553	8,274	117	109	2	14	0	3	90	53
2010 pct of Total	100.0%	96.7%	1.4%	1.3%	0.0%	0.2%	0.0%	0.0%	1.1%	0.6%
B. Population by Major Age Groups by Race and Ethnicity										
2000										
0-19	2,120	2,037	20	49	0	5	0	4	40	14
20-64	5,045	4,948	40	42	3	4	0	3	32	15
65+	1,572	1,558	10	1	0	0	0	0	1	3
85+	151	148	2	0	0	0	0	0	0	1
2010										
0-19	1,993	1,884	30	62	1	4	0	3	54	17
20-64	5,100	4,958	71	41	1	10	0	0	30	30
65+	1,460	1,432	16	6	0	0	0	0	6	6
85+	222	217	3	2	0	0	0	0	2	0
C. Age Mix for Each Racial and Ethnic Group										
2000										
0-19	24.3%	23.8%	28.6%	53.3%	0.0%	55.6%	0.0%	57.1%	54.8%	43.8%
20-64	57.7%	57.9%	57.1%	45.7%	100.0%	44.4%	0.0%	42.9%	43.8%	46.9%
65+	18.0%	18.2%	14.3%	1.1%	0.0%	0.0%	0.0%	0.0%	1.4%	9.4%
85+	1.7%	1.7%	2.9%	0.0%	0.0%	0.0%	0.0%	0.0%	0.0%	3.1%
2010										
0-19	23.3%	22.8%	25.6%	56.9%	50.0%	28.6%	0.0%	100.0%	60.0%	32.1%
20-64	59.6%	59.9%	60.7%	37.6%	50.0%	71.4%	0.0%	0.0%	33.3%	56.6%
65+	17.1%	17.3%	13.7%	5.5%	0.0%	0.0%	0.0%	0.0%	6.7%	11.3%
85+	2.6%	2.6%	2.6%	1.8%	0.0%	0.0%	0.0%	0.0%	2.2%	0.0%
D. Racial and Ethnic Composition of Each Age Group										
2000										
0-19	100.0%	96.1%	0.9%	2.3%	0.0%	0.2%	0.0%	0.2%	1.9%	0.7%
20-64	100.0%	98.1%	0.8%	0.8%	0.1%	0.1%	0.0%	0.1%	0.6%	0.3%
65+	100.0%	99.1%	0.6%	0.1%	0.0%	0.0%	0.0%	0.0%	0.1%	0.2%
85+	100.0%	98.0%	1.3%	0.0%	0.0%	0.0%	0.0%	0.0%	0.0%	0.7%
2010										
0-19	100.0%	94.5%	1.5%	3.1%	0.1%	0.2%	0.0%	0.2%	2.7%	0.9%
20-64	100.0%	97.2%	1.4%	0.8%	0.0%	0.2%	0.0%	0.0%	0.6%	0.6%
65+	100.0%	98.1%	1.1%	0.4%	0.0%	0.0%	0.0%	0.0%	0.4%	0.4%
85+	100.0%	97.7%	1.4%	0.9%	0.0%	0.0%	0.0%	0.0%	0.9%	0.0%
E. Population Growth										
2000-2010, Change										
0-19	-127	-153	10	13	1	-1	0	-1	14	3
20-64	55	10	31	-1	-2	6	0	-3	-2	15
65+	-112	-126	6	5	0	0	0	0	5	3
85+	71	69	1	2	0	0	0	0	2	-1
Total	-184	-269	47	17	-1	5	0	-4	17	21
2000-2010, Pct Change										
0-19	-6.0%	-7.5%	50.0%	26.5%	0.0%	-20.0%	0.0%	-25.0%	35.0%	21.4%
20-64	1.1%	0.2%	77.5%	-2.4%	-66.7%	150.0%	0.0%	-100.0%	-6.3%	100.0%
65+	-7.1%	-8.1%	60.0%	500.0%	0.0%	0.0%	0.0%	0.0%	500.0%	100.0%
85+	47.0%	46.6%	50.0%	0.0%	0.0%	0.0%	0.0%	0.0%	0.0%	-100.0%
Total	-2.1%	-3.1%	67.1%	18.5%	-33.3%	55.6%	0.0%	-57.1%	23.3%	65.6%

Source: Decennial Census 2010, 2000, American Community Survey 2008-2012

Prepared for the Pennsylvania State Library by The Pennsylvania State Data Center, 9/2014

Reference Data

Bentleyville Public Library

	Total Population	White, Non- Hispanic	Black, Non- Hispanic	Other, Non- Hispanic	Detail for Other, Non-Hispanic					Hispanic or Latino
					AIAN	Asian	NHOPI	Some Other	Two or More	
								Race	Races	
F. Population by Library-Defined Age Groups, 2010										
0-5	563	521	10	28	0	0	0	0	28	4
6-10	509	487	6	14	1	0	0	1	12	2
11-13	320	303	6	8	0	1	0	1	6	3
14-18	533	509	6	11	0	3	0	1	7	7
19-32	1,194	1,141	24	17	0	4	0	0	13	12
33-45	1,425	1,395	16	6	0	2	0	0	4	8
46-64	2,549	2,486	33	19	1	4	0	0	14	11
65-84	1,238	1,215	13	4	0	0	0	0	4	6
85+	222	217	3	2	0	0	0	0	2	0
Total	8,553	8,274	117	109	2	14	0	3	90	53
G. Population by 5-Year Age Cohorts, 2010										
0-4	451	418	8	22	0	0	0	0	22	3
5-9	539	509	8	19	1	0	0	1	17	3
10-14	504	481	8	12	0	1	0	2	9	3
15-19	499	476	6	9	0	3	0	0	6	8
20-24	418	392	14	7	0	1	0	0	6	5
25-29	420	407	3	5	0	3	0	0	2	5
30-34	488	475	6	6	0	1	0	0	5	1
35-39	551	542	5	1	0	1	0	0	0	3
40-44	554	539	10	2	0	0	0	0	2	3
45-49	653	639	5	7	0	2	0	0	5	2
50-54	766	749	11	2	0	0	0	0	2	4
55-59	668	653	7	7	1	2	0	0	4	1
60-64	582	562	10	4	0	0	0	0	4	6
65-69	393	385	5	0	0	0	0	0	0	3
70-74	350	343	3	2	0	0	0	0	2	2
75-79	241	236	3	1	0	0	0	0	1	1
80-84	254	251	2	1	0	0	0	0	1	0
85-89	157	156	1	0	0	0	0	0	0	0
90-94	55	51	2	2	0	0	0	0	2	0
95-99	9	9	0	0	0	0	0	0	0	0
100+	1	1	0	0	0	0	0	0	0	0
Total	8,553	8,274	117	109	2	14	0	3	90	53

Source: Decennial Census 2010, 2000, American Community Survey 2008-2012

Prepared for the Pennsylvania State Library by The Pennsylvania State Data Center, 9/2014

Reference Data

Bentleyville Public Library

H. Income Distribution, 2008-2012

Range (in thousands)	Households	Pct of Total
<\$10K	330	9.5%
\$10K to <\$25K	644	18.6%
\$25K to <\$50K	860	24.8%
\$50K to <\$75K	674	19.4%
\$75K to <\$100K	380	11.0%
\$100K to <\$150K	407	11.7%
\$150K+	175	5.0%

I. Household Type, 2010

Household Type	2000	2000pct	2010	2010pct
Total Households	3,577	100.0%	3,596	100.0%
Family Households	2,493	69.7%	2,384	66.3%
Husband-wife, no children w/children	750	21.0%	609	16.9%
Female head, no husband, w/ children	205	5.7%	254	7.1%
Male head, no wife, w/ children	60	1.7%	77	2.1%
Without children	1,478	41.3%	1,444	40.2%
Nonfamily households	1,084	30.3%	1,212	33.7%
Living alone	967	27.0%	1,027	28.6%
Other nonfamily	117	3.3%	185	5.1%

J. Household Type by Race and Ethnicity, 2008-2012

Household Type	White, NH	Black, NH	Other, NH	Hispanic
Total Households	3,497	54	35	15
Husband wife family	49.9%	14.8%	37.1%	40.0%
Family with male head, no wife	4.5%	13.0%	2.9%	0.0%
family with female head, no husband	12.1%	33.3%	17.1%	13.3%
Living alone	28.4%	37.0%	31.4%	40.0%
Other nonfamily	5.1%	1.9%	11.4%	6.7%

K. Poverty, 2008-2012

Families	Poverty	PA
All families	10.9%	9.1%
Families w/ related children	22.3%	15.3%
Female householder, no husband present	36.7%	28.8%
Female householder, no husband present, w/ related children	52.8%	39.2%
All people	13.9%	13.1%
Under 18 years	22.3%	18.4%
18 to 64 years	13.8%	12.3%
65 years and over	5.0%	8.4%

L. Educational Attainment by Race and Ethnicity, 2008-2012

Education Level	White, NH	Black	Other	Hispanic	Total
Population 25 years and over	5,772	25	124	45	5,966
Less than high school	10.3%	0.0%	44%	44.4%	11.2%
High school graduate (includes equivalency)	42.5%	60.0%	28%	0.0%	42.0%
Some college or associates degree	26.9%	40.0%	16%	55.6%	27.0%
Bachelors degree or higher	20.2%	0.0%	11%	0.0%	19.8%

M. Occupation, 2008-2012

Occupation	Estimate	Percent
Civilian population age 16 years and over	3,692	100.0%
Management, professional, and related occupations	1,138	30.8%
Service occupations	699	18.9%
Sales and office occupations	799	21.6%
Farming, fishing, and forestry occupations	14	0.4%
Construction, extraction, maintenance, and repair occupations	513	13.9%
Production, transportation, and material moving occupations	529	14.3%

N. Class of Worker, 2008-2012

Occupation	Estimate	Percent
Civilian population age 16 years and over	3,692	100.0%
Private, for profit, wage and salary employee	2,555	69.2%
Private, not for profit, wage and salary employee	328	8.9%
Private, for profit, wage and salary self-employed in own business	91	2.5%
Government workers	480	13.0%
Self-employed in own not incorporated business	223	6.0%
Unpaid family workers in family business	15	0.4%

Source: Decennial Census 2010, 2000, American Community Survey 2008-2012
Prepared for the Pennsylvania State Library by The Pennsylvania State Data Center, 9/2014