

Demographic Profile Bernville Area Community Library

Population Growth: The total population of the Bernville Area Community Library service area increased by 9.4 percent over the past decade to 4,881; this growth rate was higher than the statewide rate of 3.4 percent.

Age and Sex: In 2010, the Bernville Area Community Library service area had a total population of 4,881 - 2,458 males (50.4 percent) and 2,423 females (49.6 percent). The age structure of the population in 2010 was as follows: 25.8 percent of the population was under 20 years old, 60.0 percent was 20 to 64 years old and 14.2 percent was 65 years or older.

Race and Ethnicity: For people reporting one race alone, not of Hispanic ethnicity, 92.0 percent were White; 1.4 percent were Black or African American; 1.7 percent were Other Race Alone.¹ A total of 239 or 4.9 percent of the population were Hispanic.²

Households: In 2010, there were 1,810 households in the Bernville Area Community Library service area. The average household size was 2.70 people. Families made up 77.1 percent of the households. This figure includes both families with (29.9 percent) and without (47.1 percent) children. Of families with children less than 18 years old, 25.2 percent were married-couple families, 2.9 percent were female householder families with no husband present, and the remaining (1.8 percent) were male-headed households with no wife present.

Education: The educational attainment of the population 25 years and over was lower in the Bernville Area Community Library service area than in Pennsylvania. During the period 2008-2012, 20.7 percent of residents had earned a Bachelor's degree or higher, compared with 27.0 percent statewide. A total of 409 or 12.0 percent had not completed high school, compared with 11.7 percent for the commonwealth as a whole.

Income and Poverty: Households with incomes of \$100,000 or More (23.1 percent) made up the largest percent of households in the Bernville Area Community Library service area in 2008-2012. For comparison, 20.8 percent of commonwealth households were in this range during the period.

In 2008-2012, the overall poverty rate for the Bernville Area Community Library service area was lower than Pennsylvania (6.7 percent compared to 13.1 percent). The poverty rate for the population under 18 years of age was 8.2 percent, compared with 6.6 percent of people 18 to 64 years and 4.9 percent for those aged 65 years and over. A total of 62 or 4.3 percent of all families had incomes below poverty level. In 2008-2012, 7.4 percent of families with related children and 22.8 percent of families with a female householder and no husband with related children present had incomes below the poverty level.

Class of Worker and Occupation: In 2008-2012, 78.9 percent of the workforce was private wage and salary workers; 12.7 percent were federal, state, or local government workers; and 8.0 percent were self-employed in their own (not incorporated) business.

The top occupation group for the civilian employed population 16 years and over in the Bernville Area Community Library service area in 2008-2012 was Management, business, science, and arts (34.5 percent).

¹ Other race includes those who identified themselves as American Indian/Alaska Native, Asian, Native Hawaiian/Other Pacific Islander, Some Other Race and Two or More Races on the 2010 Census form.

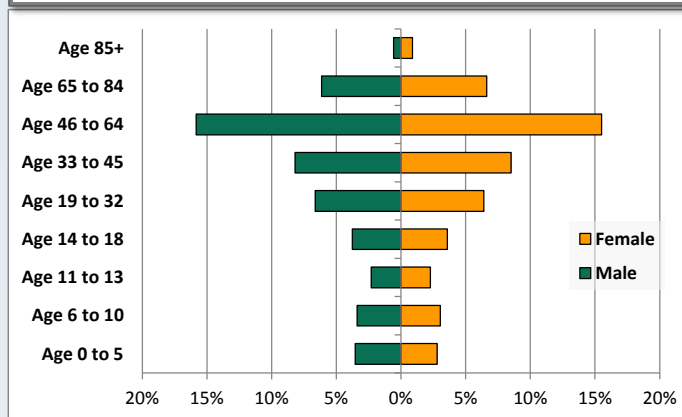
² People of Hispanic origin may be of any race.

Demographic Profile

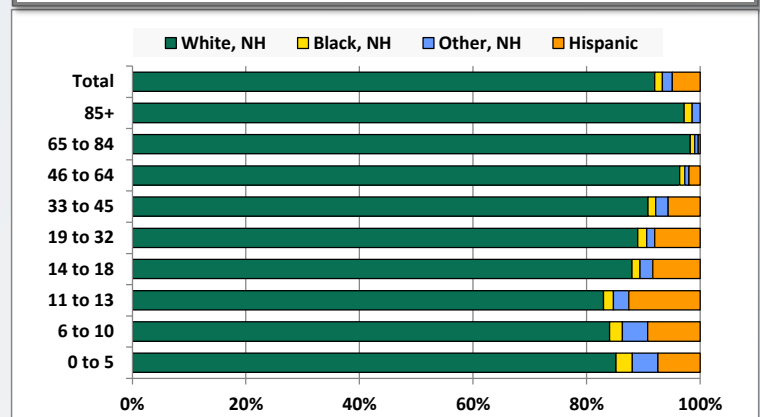
Bernville Area Community Library

Key Indicators		
	2000	2010
Population Growth		
Total Population	4,462	4,881
10-Year Growth	N/A	9.4%
Diversity		
White Alone, Non-Hispanic	97.2%	92.0%
Black Alone, Non-Hispanic	0.4%	1.4%
Other Race Alone, Non-Hispanic	0.9%	1.7%
Percent Hispanic	1.5%	4.9%
Aging		
Percent 65 Years and Over	12.9%	14.2%
Households		
Percent Married Couple with Own Children	28.1%	25.2%
Percent Living Alone	18.1%	18.1%

Population by Library-Defined Age Group, 2010



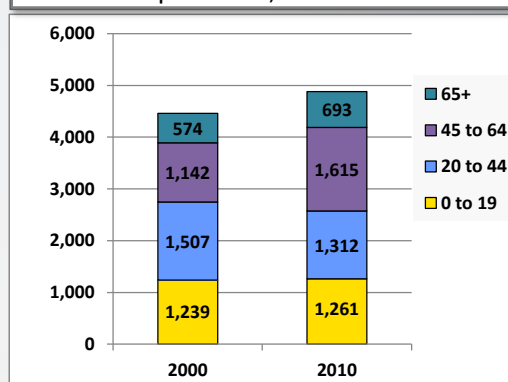
Race/Ethnicity by Library-Defined Age Group, 2010



Population Growth by Library-Defined Age Group, 2000 to 2010

Age Group	2010	Change	
		Numeric	Percent
Total	4,881	419	9.4%
85+	71	28	65.1%
65 to 84	622	91	17.1%
46 to 64	1,530	474	44.9%
33 to 45	815	-208	-20.3%
19 to 32	637	26	4.3%
14 to 18	359	70	24.2%
11 to 13	223	-4	-1.8%
6 to 10	314	-55	-14.9%
0 to 5	310	-3	-1.0%

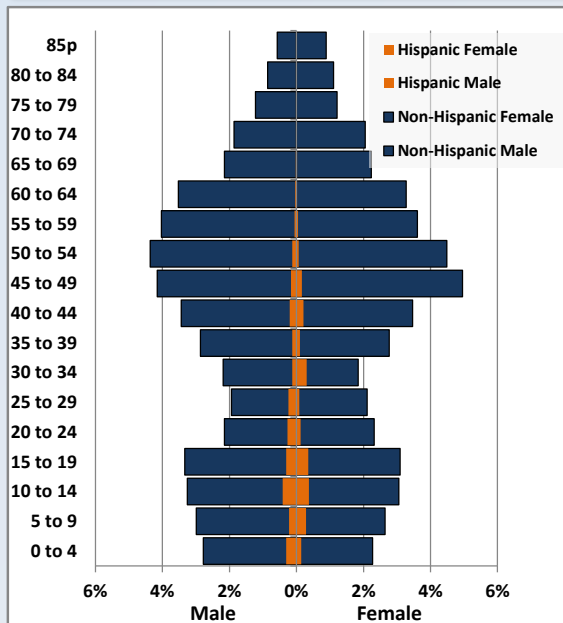
Population Total, 2000 and 2010



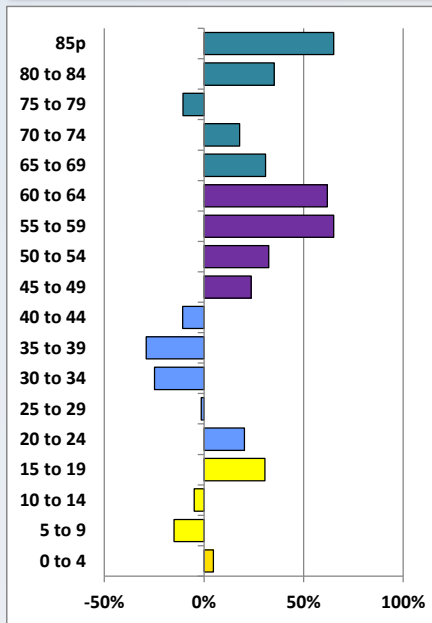
Demographic Profile

Bernville Area Community Library

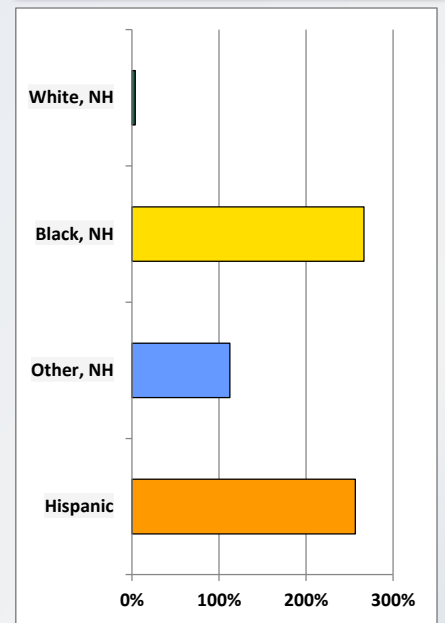
Population by 5-Year Age Cohorts



Pop Change by Age, 2000 to 2010

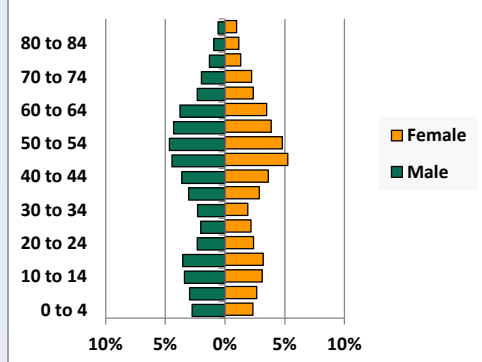


Pop Change by Race/Ethnicity, 2000 to 2010

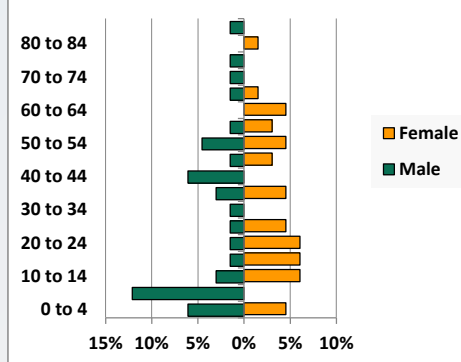


Population by Age, Race and Ethnicity 2010

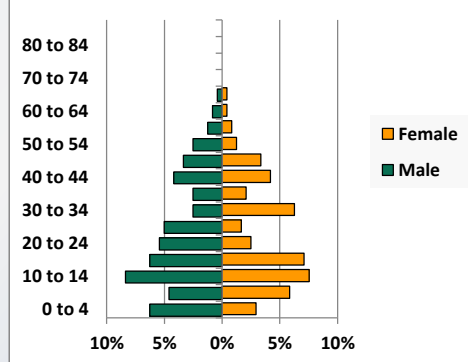
White, Not Hispanic



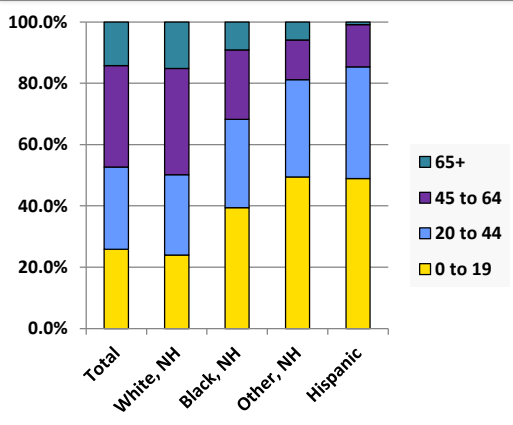
Black, Non-Hispanic



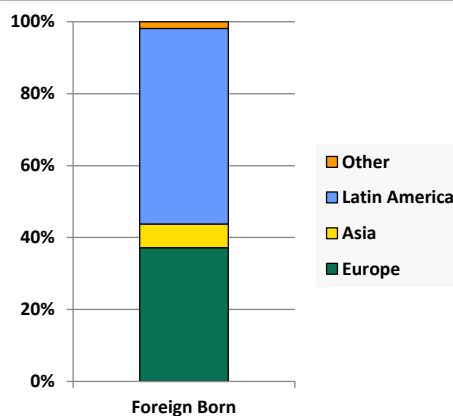
Hispanic



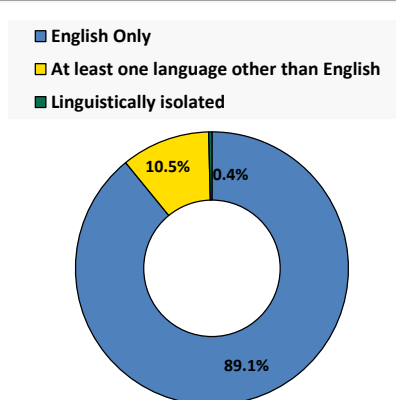
Age by Race and Ethnicity, 2010



Foreign Born, 2010



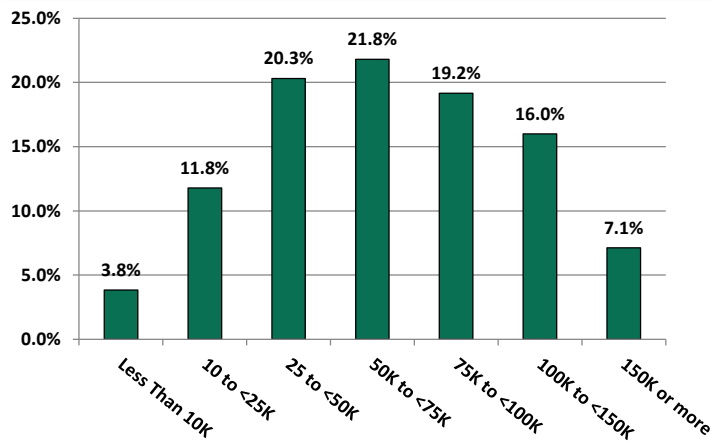
Household Language, 2010



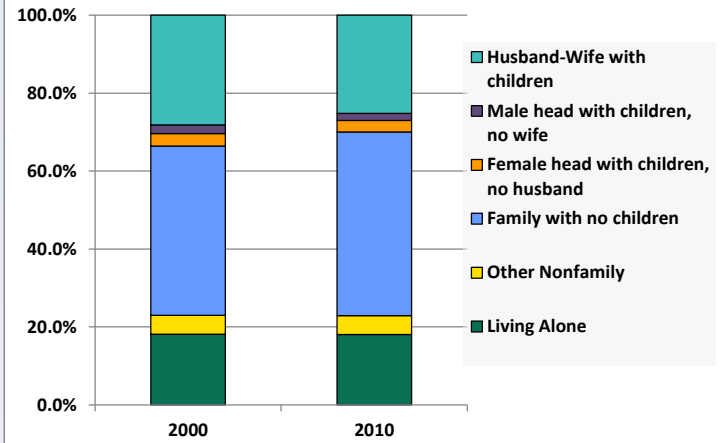
Demographic Profile

Bernville Area Community Library

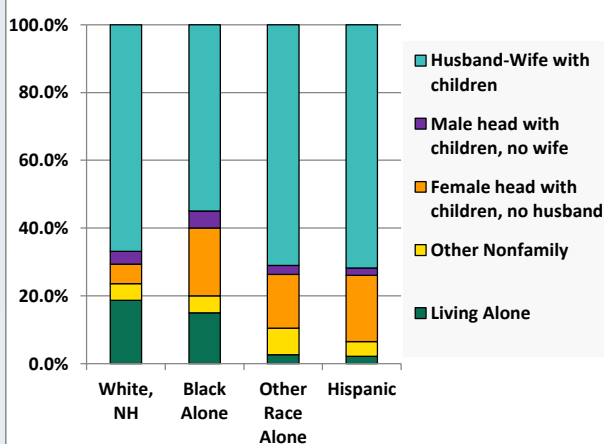
Household Income Distribution, 2008-2012



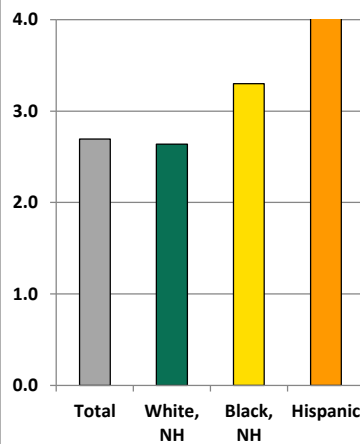
Household Type, 2000 and 2010



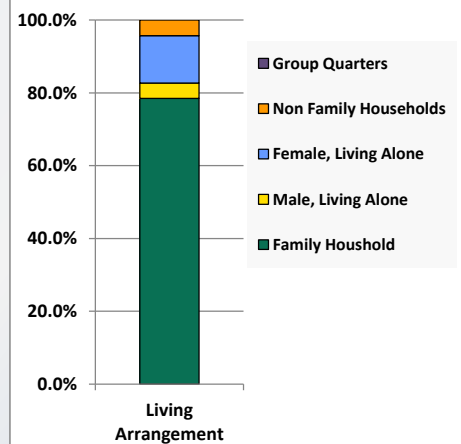
Household Type by Race/Ethnicity, 2010



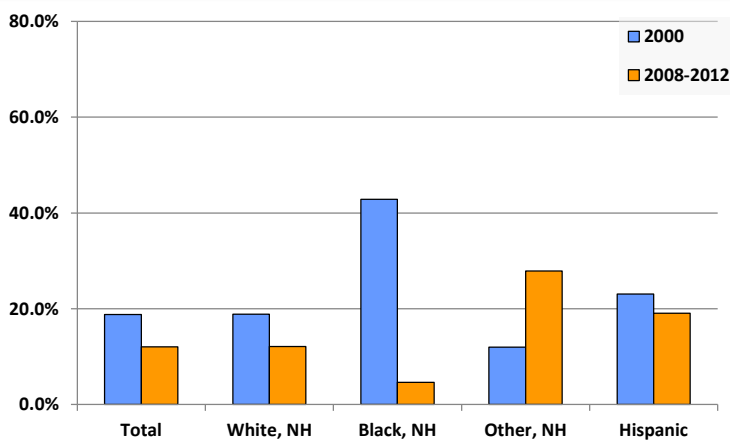
Average Household Size, 2010



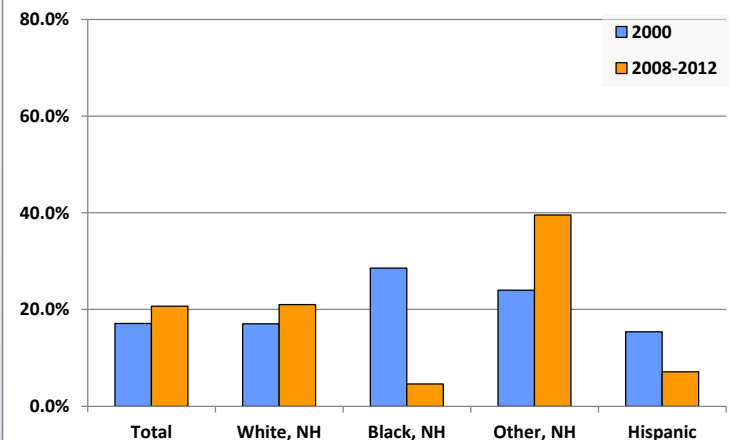
Living Arrangements 65+, 2008-2012



Percent of Adults that Did Not Complete High School



Percent of Adults Who Attained a Bachelor's Degree or Higher



Reference Data

Bernville Area Community Library

	Total Population	White, Non- Hispanic	Black, Non- Hispanic	Other, Non- Hispanic	Detail for Other, Non-Hispanic					Hispanic or Latino
					AIAN	Asian	NHOPI	Some Other Race	Two or More Races	
A. Total Population										
2000 Total	4,462	4,337	18	40	3	12	0	1	24	67
2000 pct of Total	100.0%	97.2%	0.4%	0.9%	0.1%	0.3%	0.0%	0.0%	0.5%	1.5%
2010 Total	4,881	4,491	66	85	5	27	2	7	44	239
2010 pct of Total	100.0%	92.0%	1.4%	1.7%	0.1%	0.6%	0.0%	0.1%	0.9%	4.9%
B. Population by Major Age Groups by Race and Ethnicity										
2000										
0-19	1,239	1,177	4	23	2	5	0	1	15	35
20-64	2,649	2,594	10	14	0	5	0	0	9	31
65+	574	566	4	3	1	2	0	0	0	1
85+	43	43	0	0	0	0	0	0	0	0
2010										
0-19	1,261	1,076	26	42	2	9	0	1	30	117
20-64	2,927	2,735	34	38	2	14	2	6	14	120
65+	693	680	6	5	1	4	0	0	0	2
85+	71	69	1	1	0	1	0	0	0	0
C. Age Mix for Each Racial and Ethnic Group										
2000										
0-19	27.8%	27.1%	22.2%	57.5%	66.7%	41.7%	0.0%	100.0%	62.5%	52.2%
20-64	59.4%	59.8%	55.6%	35.0%	0.0%	41.7%	0.0%	0.0%	37.5%	46.3%
65+	12.9%	13.1%	22.2%	7.5%	33.3%	16.7%	0.0%	0.0%	0.0%	1.5%
85+	1.0%	1.0%	0.0%	0.0%	0.0%	0.0%	0.0%	0.0%	0.0%	0.0%
2010										
0-19	25.8%	24.0%	39.4%	49.4%	40.0%	33.3%	0.0%	14.3%	68.2%	49.0%
20-64	60.0%	60.9%	51.5%	44.7%	40.0%	51.9%	100.0%	85.7%	31.8%	50.2%
65+	14.2%	15.1%	9.1%	5.9%	20.0%	14.8%	0.0%	0.0%	0.0%	0.8%
85+	1.5%	1.5%	1.5%	1.2%	0.0%	3.7%	0.0%	0.0%	0.0%	0.0%
D. Racial and Ethnic Composition of Each Age Group										
2000										
0-19	100.0%	95.0%	0.3%	1.9%	0.2%	0.4%	0.0%	0.1%	1.2%	2.8%
20-64	100.0%	97.9%	0.4%	0.5%	0.0%	0.2%	0.0%	0.0%	0.3%	1.2%
65+	100.0%	98.6%	0.7%	0.5%	0.2%	0.3%	0.0%	0.0%	0.0%	0.2%
85+	100.0%	100.0%	0.0%	0.0%	0.0%	0.0%	0.0%	0.0%	0.0%	0.0%
2010										
0-19	100.0%	85.3%	2.1%	3.3%	0.2%	0.7%	0.0%	0.1%	2.4%	9.3%
20-64	100.0%	93.4%	1.2%	1.3%	0.1%	0.5%	0.1%	0.2%	0.5%	4.1%
65+	100.0%	98.1%	0.9%	0.7%	0.1%	0.6%	0.0%	0.0%	0.0%	0.3%
85+	100.0%	97.2%	1.4%	1.4%	0.0%	1.4%	0.0%	0.0%	0.0%	0.0%
E. Population Growth										
2000-2010, Change										
0-19	22	-101	22	19	0	4	0	0	15	82
20-64	278	141	24	24	2	9	2	6	5	89
65+	119	114	2	2	0	2	0	0	0	1
85+	28	26	1	1	0	1	0	0	0	0
Total	419	154	48	45	2	15	2	6	20	172
2000-2010, Pct Change										
0-19	1.8%	-8.6%	550.0%	82.6%	0.0%	80.0%	0.0%	0.0%	100.0%	234.3%
20-64	10.5%	5.4%	240.0%	171.4%	0.0%	180.0%	0.0%	0.0%	55.6%	287.1%
65+	20.7%	20.1%	50.0%	66.7%	0.0%	100.0%	0.0%	0.0%	0.0%	100.0%
85+	65.1%	60.5%	0.0%	0.0%	0.0%	0.0%	0.0%	0.0%	0.0%	0.0%
Total	9.4%	3.6%	266.7%	112.5%	66.7%	125.0%	0.0%	600.0%	83.3%	256.7%

Source: Decennial Census 2010, 2000, American Community Survey 2008-2012

Prepared for the Pennsylvania State Library by The Pennsylvania State Data Center, 9/2014

Reference Data

Bernville Area Community Library

	Total Population	White, Non- Hispanic	Black, Non- Hispanic	Other, Non- Hispanic	Detail for Other, Non-Hispanic					Hispanic or Latino
					AIAN	Asian	NHOPI	Some Other	Two or More	
								Race	Races	
F. Population by Library-Defined Age Groups, 2010										
0-5	310	264	9	14	0	1	0	1	12	23
6-10	314	264	7	14	1	1	0	0	12	29
11-13	223	185	4	6	1	2	0	0	3	28
14-18	359	316	5	8	0	5	0	0	3	30
19-32	637	567	10	9	0	3	1	2	3	51
33-45	815	740	11	18	2	9	0	0	7	46
46-64	1,530	1,475	14	11	0	2	1	4	4	30
65-84	622	611	5	4	1	3	0	0	0	2
85+	71	69	1	1	0	1	0	0	0	0
Total	4,881	4,491	66	85	5	27	2	7	44	239
G. Population by 5-Year Age Cohorts, 2010										
0-4	269	229	7	11	0	1	0	0	10	22
5-9	300	252	8	15	1	1	0	1	12	25
10-14	346	293	6	9	1	3	0	0	5	38
15-19	346	302	5	7	0	4	0	0	3	32
20-24	237	211	5	2	0	0	0	1	1	19
25-29	214	189	4	5	0	2	1	0	2	16
30-34	218	188	1	8	0	5	0	1	2	21
35-39	286	266	5	4	0	1	0	0	3	11
40-44	357	325	4	8	2	4	0	0	2	20
45-49	461	436	3	6	0	1	1	2	2	16
50-54	441	425	6	1	0	0	0	1	0	9
55-59	378	368	3	2	0	1	0	0	1	5
60-64	335	327	3	2	0	0	0	1	1	3
65-69	216	210	2	2	1	1	0	0	0	2
70-74	191	189	1	1	0	1	0	0	0	0
75-79	119	118	1	0	0	0	0	0	0	0
80-84	96	94	1	1	0	1	0	0	0	0
85-89	54	52	1	1	0	1	0	0	0	0
90-94	14	14	0	0	0	0	0	0	0	0
95-99	2	2	0	0	0	0	0	0	0	0
100+	1	1	0	0	0	0	0	0	0	0
Total	4,881	4,491	66	85	5	27	2	7	44	239

Source: Decennial Census 2010, 2000, American Community Survey 2008-2012

Prepared for the Pennsylvania State Library by The Pennsylvania State Data Center, 9/2014

Page 6

Reference Data

Bernville Area Community Library

H. Income Distribution, 2008-2012

Range (in thousands)	Households	Pct of Total
<\$10K	70	3.8%
\$10K to <\$25K	215	11.8%
\$25K to <\$50K	371	20.3%
\$50K to <\$75K	398	21.8%
\$75K to <\$100K	350	19.2%
\$100K to <\$150K	292	16.0%
\$150K+	130	7.1%

I. Household Type, 2010

Household Type	2000	2000pct	2010	2010pct
Total Households	1,645	100.0%	1,810	100.0%
Family Households	1,267	77.0%	1,395	77.1%
Husband-wife, no children w/children	463	28.1%	456	25.2%
Female head, no husband, w/ children	52	3.2%	53	2.9%
Male head, no wife, w/ children	37	2.2%	33	1.8%
Without children	715	43.5%	853	47.1%
Nonfamily households	378	23.0%	415	22.9%
Living alone	298	18.1%	327	18.1%
Other nonfamily	80	4.9%	88	4.9%

J. Household Type by Race and Ethnicity, 2008-2012

Household Type	White, NH	Black, NH	Other, NH	Hispanic
Total Households	1,727	20	38	46
Husband wife family	66.9%	55.0%	71.1%	71.7%
Family with male head, no wife	3.7%	5.0%	2.6%	2.2%
family with female head, no husband	5.8%	20.0%	15.8%	19.6%
Living alone	18.7%	15.0%	2.6%	2.2%
Other nonfamily	4.9%	5.0%	7.9%	4.3%

K. Poverty, 2008-2012

Families	Poverty	PA
All families	4.3%	9.1%
Families w/ related children	7.4%	15.3%
Female householder, no husband present	15.7%	28.8%
Female householder, no husband present, w/ related children	22.8%	39.2%
All people	6.7%	13.1%
Under 18 years	8.2%	18.4%
18 to 64 years	6.6%	12.3%
65 years and over	4.9%	8.4%

L. Educational Attainment by Race and Ethnicity, 2008-2012

Education Level	White, NH	Black	Other	Hispanic	Total
Population 25 years and over	3,228	65	43	84	3,401
Less than high school	12.1%	4.6%	28%	19.0%	12.0%
High school graduate (includes equivalency)	42.8%	43.1%	9%	45.2%	42.6%
Some college or associates degree	24.1%	47.7%	23%	28.6%	24.6%
Bachelors degree or higher	21.0%	4.6%	40%	7.1%	20.7%

M. Occupation, 2008-2012

Occupation	Estimate	Percent
Civilian population age 16 years and over	2,679	100.0%
Management, professional, and related occupations	923	34.5%
Service occupations	423	15.8%
Sales and office occupations	598	22.3%
Farming, fishing, and forestry occupations	31	1.2%
Construction, extraction, maintenance, and repair occupations	304	11.3%
Production, transportation, and material moving occupations	400	14.9%

N. Class of Worker, 2008-2012

Occupation	Estimate	Percent
Civilian population age 16 years and over	2,679	100.0%
Private, for profit, wage and salary employee	1,732	64.7%
Private, not for profit, wage and salary employee	268	10.0%
Private, for profit, wage and salary self-employed in own business	113	4.2%
Government workers	339	12.7%
Self-employed in own not incorporated business	215	8.0%
Unpaid family workers in family business	12	0.4%