

Demographic Profile Blairsville Public Library

Population Growth: The total population of the Blairsville Public Library service area decreased by -5.4 percent over the past decade to 3,412; this decline rate was lower than the statewide rate of 3.4 percent.

Age and Sex: In 2010, the Blairsville Public Library service area had a total population of 3,412 - 1,683 males (49.3 percent) and 1,729 females (50.7 percent). The age structure of the population in 2010 was as follows: 22.9 percent of the population was under 20 years old, 57.2 percent was 20 to 64 years old and 19.9 percent was 65 years or older.

Race and Ethnicity: For people reporting one race alone, not of Hispanic ethnicity, 94.3 percent were White; 2.2 percent were Black or African American; 2.3 percent were Other Race Alone.¹ A total of 40 or 1.2 percent of the population were Hispanic.²

Households: In 2010, there were 1,567 households in the Blairsville Public Library service area. The average household size was 2.18 people. Families made up 57.8 percent of the households. This figure includes both families with (21.3 percent) and without (36.5 percent) children. Of families with children less than 18 years old, 13.5 percent were married-couple families, 6.1 percent were female householder families with no husband present, and the remaining (1.7 percent) were male-headed households with no wife present.

Education: The educational attainment of the population 25 years and over was lower in the Blairsville Public Library service area than in Pennsylvania. During the period 2008-2012, 20.8 percent of residents had earned a Bachelor's degree or higher, compared with 27.0 percent statewide. A total of 161 or 6.6 percent had not completed high school, compared with 11.7 percent for the commonwealth as a whole.

Income and Poverty: Households with incomes of \$25,000 to \$49,999 (32.5 percent) made up the largest percent of households in the Blairsville Public Library service area in 2008-2012. For comparison, 24.4 percent of commonwealth households were in this range during the period.

In 2008-2012, the overall poverty rate for the Blairsville Public Library service area was lower than Pennsylvania (11.8 percent compared to 13.1 percent). The poverty rate for the population under 18 years of age was 16.2 percent, compared with 9.0 percent of people 18 to 64 years and 15.3 percent for those aged 65 years and over. A total of 44 or 4.9 percent of all families had incomes below poverty level. In 2008-2012, 12.6 percent of families with related children and 61.7 percent of families with a female householder and no husband with related children present had incomes below the poverty level.

Class of Worker and Occupation: In 2008-2012, 81.9 percent of the workforce was private wage and salary workers; 12.6 percent were federal, state, or local government workers; and 5.5 percent were self-employed in their own (not incorporated) business.

The top occupation group for the civilian employed population 16 years and over in the Blairsville Public Library service area in 2008-2012 was Management, business, science, and arts (28.4 percent).

¹ Other race includes those who identified themselves as American Indian/Alaska Native, Asian, Native Hawaiian/Other Pacific Islander, Some Other Race and Two or More Races on the 2010 Census form.

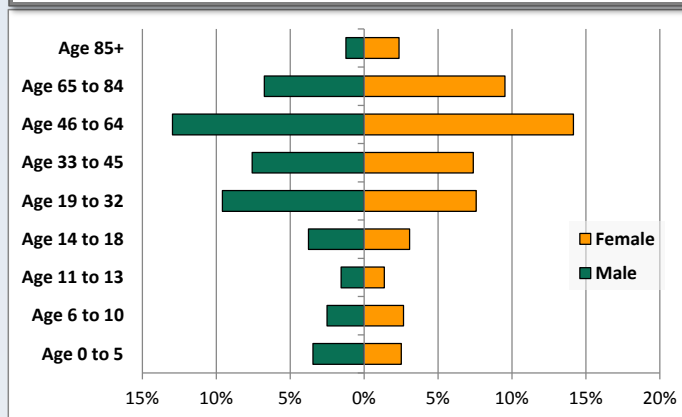
² People of Hispanic origin may be of any race.

Demographic Profile

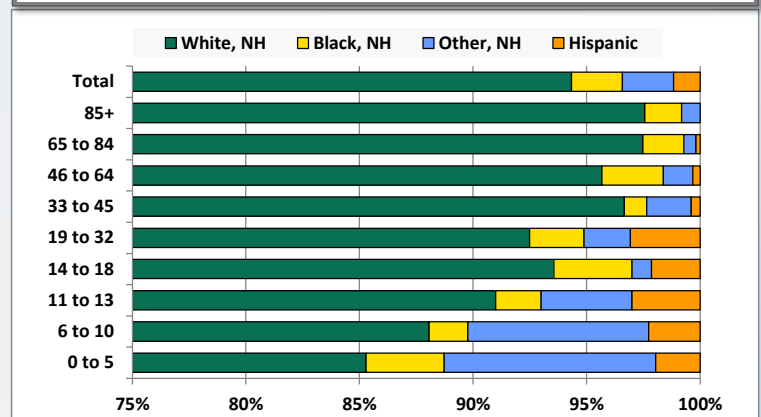
Blairsville Public Library

Key Indicators		
	2000	2010
Population Growth		
Total Population	3,607	3,412
10-Year Growth	N/A	-5.4%
Diversity		
White Alone, Non-Hispanic	95.6%	94.3%
Black Alone, Non-Hispanic	3.0%	2.2%
Other Race Alone, Non-Hispanic	1.3%	2.3%
Percent Hispanic	0.1%	1.2%
Aging		
Percent 65 Years and Over	21.2%	19.9%
Households		
Percent Married Couple with Own Children	18.3%	13.5%
Percent Living Alone	36.3%	35.9%

Population by Library-Defined Age Group, 2010



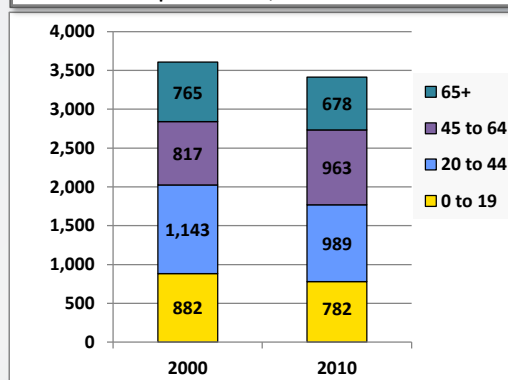
Race/Ethnicity by Library-Defined Age Group, 2010



Population Growth by Library-Defined Age Group, 2000 to 2010

Age Group	2010	Change	
		Numeric	Percent
Total	3,412	-195	-5.4%
85+	123	26	26.8%
65 to 84	555	-113	-16.9%
46 to 64	925	168	22.2%
33 to 45	510	-212	-29.4%
19 to 32	586	68	13.1%
14 to 18	233	1	0.4%
11 to 13	100	-16	-13.8%
6 to 10	176	-64	-26.7%
0 to 5	204	-53	-20.6%

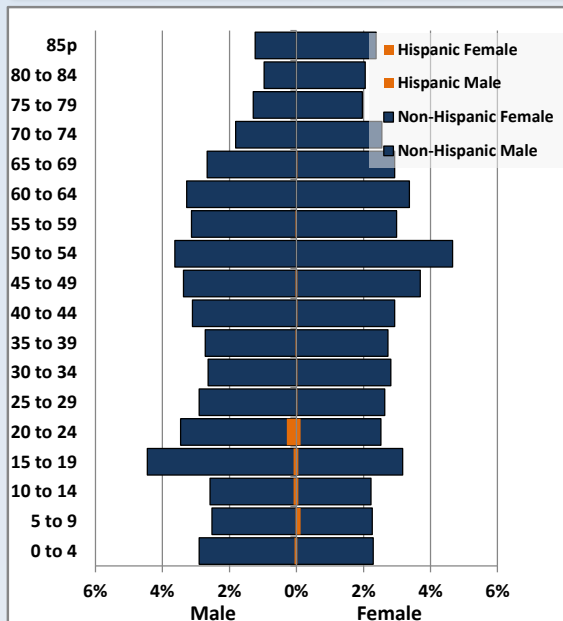
Population Total, 2000 and 2010



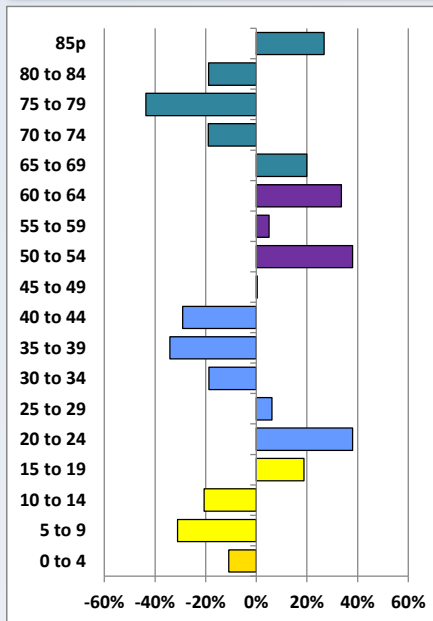
Demographic Profile

Blairsville Public Library

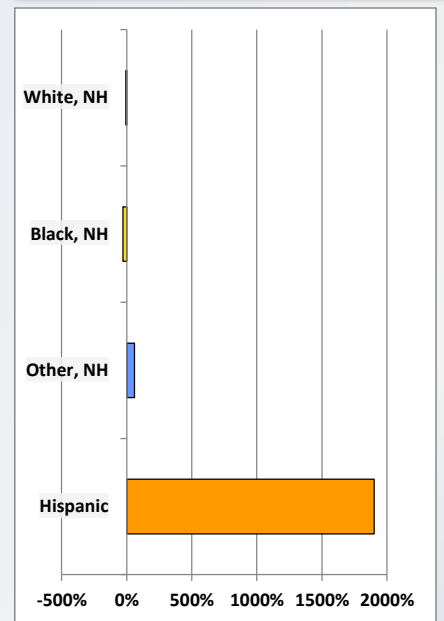
Population by 5-Year Age Cohorts



Pop Change by Age, 2000 to 2010

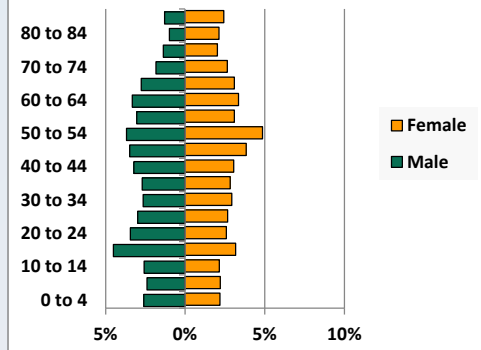


Pop Change by Race/Ethnicity, 2000 to 2010

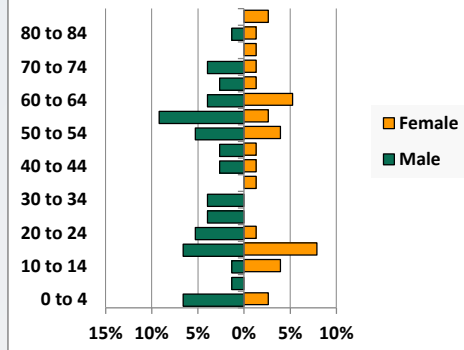


Population by Age, Race and Ethnicity 2010

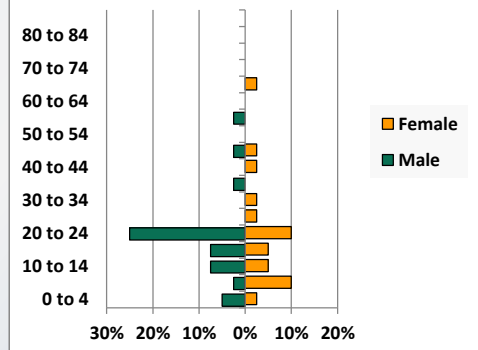
White, Not Hispanic



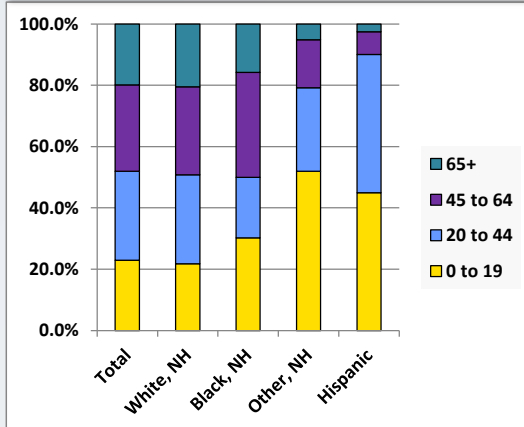
Black, Non-Hispanic



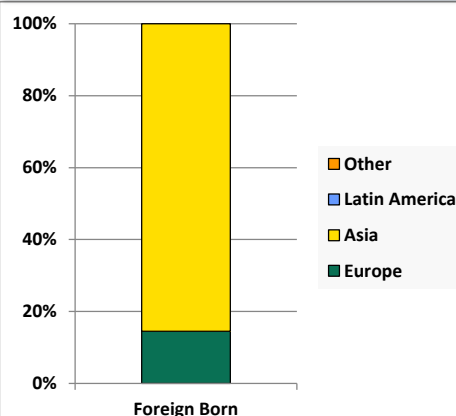
Hispanic



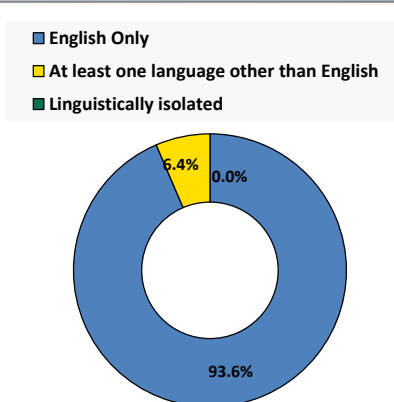
Age by Race and Ethnicity, 2010



Foreign Born, 2010



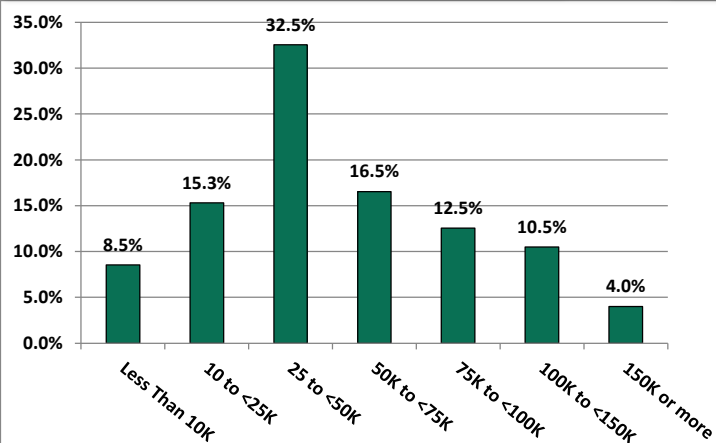
Household Language, 2010



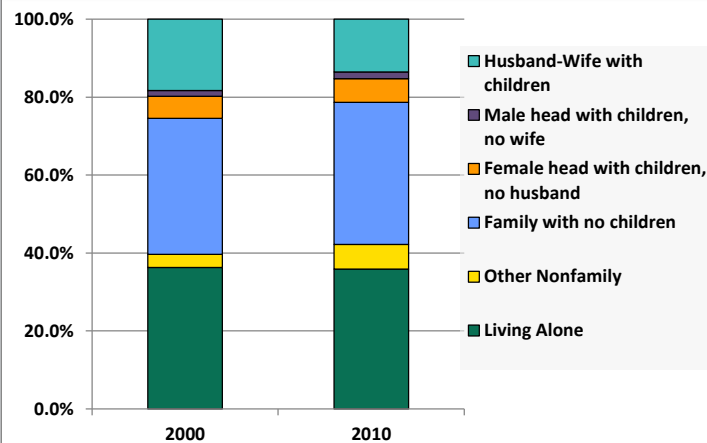
Demographic Profile

Blairsville Public Library

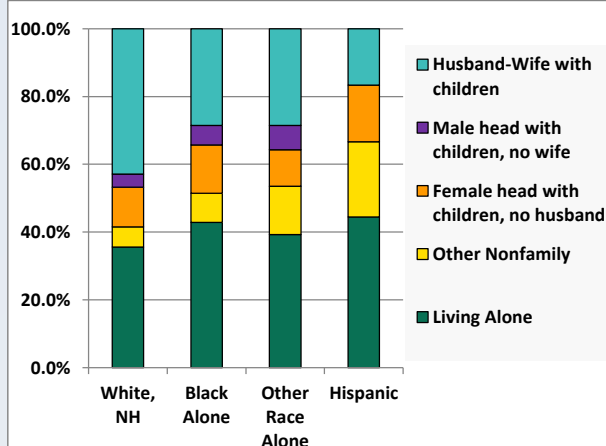
Household Income Distribution, 2008-2012



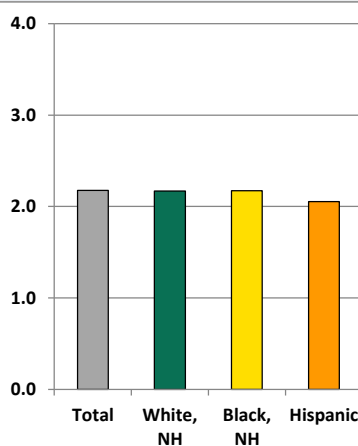
Household Type, 2000 and 2010



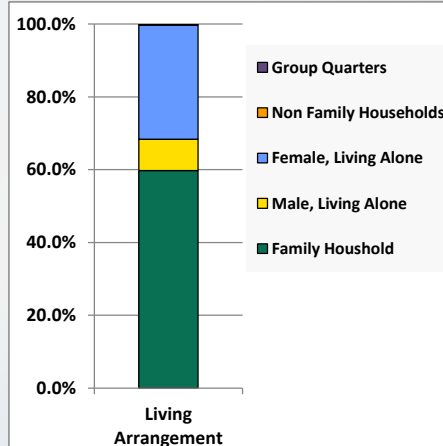
Household Type by Race/Ethnicity, 2010



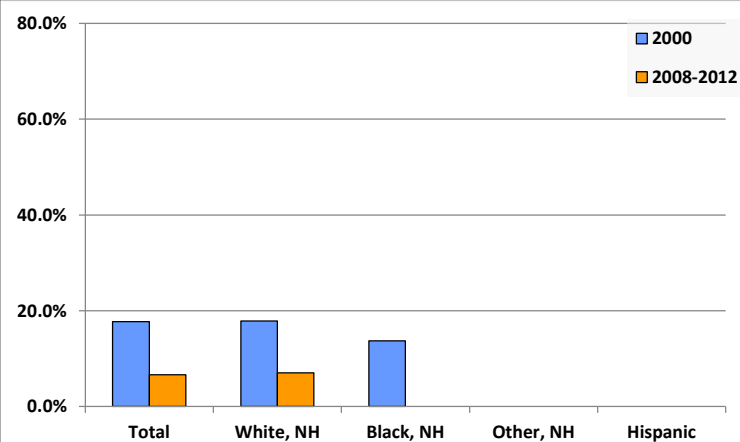
Average Household Size, 2010



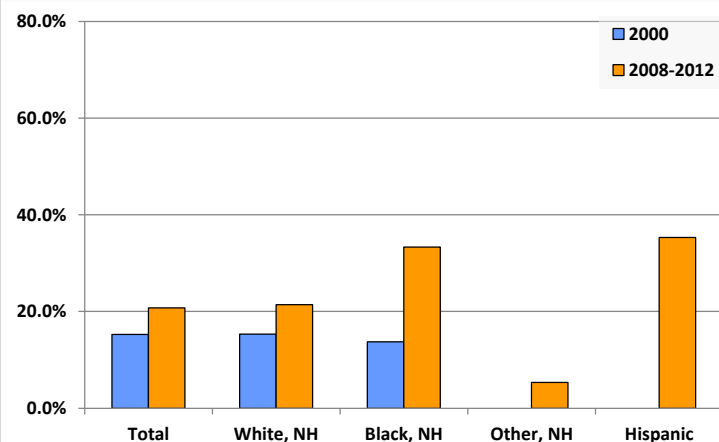
Living Arrangements 65+, 2008-2012



Percent of Adults that Did Not Complete High School



Percent of Adults Who Attained a Bachelor's Degree or Higher



Reference Data

Blairsville Public Library

					Detail for Other, Non-Hispanic					
	Total Population	White, Non- Hispanic	Black, Non- Hispanic	Other, Non- Hispanic	AIAN	Asian	NHOPI	Some Other Race	Two or More Races	Hispanic or Latino
A. Total Population										
2000 Total	3,607	3,449	108	48	4	21	0	2	21	2
2000 pct of Total	100.0%	95.6%	3.0%	1.3%	0.1%	0.6%	0.0%	0.1%	0.6%	0.1%
2010 Total	3,412	3,219	76	77	6	25	4	4	38	40
2010 pct of Total	100.0%	94.3%	2.2%	2.3%	0.2%	0.7%	0.1%	0.1%	1.1%	1.2%
B. Population by Major Age Groups by Race and Ethnicity										
2000										
0-19	882	822	39	21	1	7	0	1	12	0
20-64	1,960	1,875	61	22	3	11	0	1	7	2
65+	765	752	8	5	0	3	0	0	2	0
85+	97	95	2	0	0	0	0	0	0	0
2010										
0-19	782	701	23	40	2	9	3	3	23	18
20-64	1,952	1,857	41	33	4	14	1	1	13	21
65+	678	661	12	4	0	2	0	0	2	1
85+	123	120	2	1	0	0	0	0	1	0
C. Age Mix for Each Racial and Ethnic Group										
2000										
0-19	24.5%	23.8%	36.1%	43.8%	25.0%	33.3%	0.0%	50.0%	57.1%	0.0%
20-64	54.3%	54.4%	56.5%	45.8%	75.0%	52.4%	0.0%	50.0%	33.3%	100.0%
65+	21.2%	21.8%	7.4%	10.4%	0.0%	14.3%	0.0%	0.0%	9.5%	0.0%
85+	2.7%	2.8%	1.9%	0.0%	0.0%	0.0%	0.0%	0.0%	0.0%	0.0%
2010										
0-19	22.9%	21.8%	30.3%	51.9%	33.3%	36.0%	75.0%	75.0%	60.5%	45.0%
20-64	57.2%	57.7%	53.9%	42.9%	66.7%	56.0%	25.0%	25.0%	34.2%	52.5%
65+	19.9%	20.5%	15.8%	5.2%	0.0%	8.0%	0.0%	0.0%	5.3%	2.5%
85+	3.6%	3.7%	2.6%	1.3%	0.0%	0.0%	0.0%	0.0%	2.6%	0.0%
D. Racial and Ethnic Composition of Each Age Group										
2000										
0-19	100.0%	93.2%	4.4%	2.4%	0.1%	0.8%	0.0%	0.1%	1.4%	0.0%
20-64	100.0%	95.7%	3.1%	1.1%	0.2%	0.6%	0.0%	0.1%	0.4%	0.1%
65+	100.0%	98.3%	1.0%	0.7%	0.0%	0.4%	0.0%	0.0%	0.3%	0.0%
85+	100.0%	97.9%	2.1%	0.0%	0.0%	0.0%	0.0%	0.0%	0.0%	0.0%
2010										
0-19	100.0%	89.6%	2.9%	5.1%	0.3%	1.2%	0.4%	0.4%	2.9%	2.3%
20-64	100.0%	95.1%	2.1%	1.7%	0.2%	0.7%	0.1%	0.1%	0.7%	1.1%
65+	100.0%	97.5%	1.8%	0.6%	0.0%	0.3%	0.0%	0.0%	0.3%	0.1%
85+	100.0%	97.6%	1.6%	0.8%	0.0%	0.0%	0.0%	0.0%	0.8%	0.0%
E. Population Growth										
2000-2010, Change										
0-19	-100	-121	-16	19	1	2	3	2	11	18
20-64	-8	-18	-20	11	1	3	1	0	6	19
65+	-87	-91	4	-1	0	-1	0	0	0	1
85+	26	25	0	1	0	0	0	0	1	0
Total	-195	-230	-32	29	2	4	4	2	17	38
2000-2010, Pct Change										
0-19	-11.3%	-14.7%	-41.0%	90.5%	100.0%	28.6%	0.0%	200.0%	91.7%	0.0%
20-64	-0.4%	-1.0%	-32.8%	50.0%	33.3%	27.3%	0.0%	0.0%	85.7%	950.0%
65+	-11.4%	-12.1%	50.0%	-20.0%	0.0%	-33.3%	0.0%	0.0%	0.0%	0.0%
85+	26.8%	26.3%	0.0%	0.0%	0.0%	0.0%	0.0%	0.0%	0.0%	0.0%
Total	-5.4%	-6.7%	-29.6%	60.4%	50.0%	19.0%	0.0%	100.0%	81.0%	1900.0%

Source: Decennial Census 2010, 2000, American Community Survey 2008-2012

Prepared for the Pennsylvania State Library by The Pennsylvania State Data Center, 9/2014

Reference Data

Blairsville Public Library

	Total Population	White, Non- Hispanic	Black, Non- Hispanic	Other, Non- Hispanic	Detail for Other, Non-Hispanic					Hispanic or Latino
					AIAN	Asian	NHOPI	Some Other	Two or More	
								Race	Races	
F. Population by Library-Defined Age Groups, 2010										
0-5	204	174	7	19	1	4	1	2	11	4
6-10	176	155	3	14	1	5	2	0	6	4
11-13	100	91	2	4	0	0	0	1	3	3
14-18	233	218	8	2	0	0	0	0	2	5
19-32	586	542	14	12	2	2	1	1	6	18
33-45	510	493	5	10	1	5	0	0	4	2
46-64	925	885	25	12	1	7	0	0	4	3
65-84	555	541	10	3	0	2	0	0	1	1
85+	123	120	2	1	0	0	0	0	1	0
Total	3,412	3,219	76	77	6	25	4	4	38	40
G. Population by 5-Year Age Cohorts, 2010										
0-4	180	154	7	16	0	2	1	2	11	3
5-9	168	148	1	14	1	5	2	0	6	5
10-14	169	152	4	8	1	2	0	1	4	5
15-19	265	247	11	2	0	0	0	0	2	5
20-24	218	194	5	5	1	1	0	1	2	14
25-29	190	182	3	4	1	1	1	0	1	1
30-34	187	179	3	4	0	2	0	0	2	1
35-39	187	178	1	7	0	3	0	0	4	1
40-44	207	202	3	1	1	0	0	0	0	1
45-49	243	235	3	3	1	0	0	0	2	2
50-54	283	275	7	1	0	1	0	0	0	0
55-59	210	197	9	3	0	2	0	0	1	1
60-64	227	215	7	5	0	4	0	0	1	0
65-69	192	188	3	0	0	0	0	0	0	1
70-74	149	144	4	1	0	1	0	0	0	0
75-79	111	109	1	1	0	1	0	0	0	0
80-84	103	100	2	1	0	0	0	0	1	0
85-89	84	83	0	1	0	0	0	0	1	0
90-94	27	26	1	0	0	0	0	0	0	0
95-99	12	11	1	0	0	0	0	0	0	0
100+	0	0	0	0	0	0	0	0	0	0
Total	3,412	3,219	76	77	6	25	4	4	38	40

Source: Decennial Census 2010, 2000, American Community Survey 2008-2012

Prepared for the Pennsylvania State Library by The Pennsylvania State Data Center, 9/2014

Page 6

Reference Data

Blairsville Public Library

H. Income Distribution, 2008-2012

Range (in thousands)	Households	Pct of Total
<\$10K	126	8.5%
\$10K to <\$25K	226	15.3%
\$25K to <\$50K	480	32.5%
\$50K to <\$75K	244	16.5%
\$75K to <\$100K	185	12.5%
\$100K to <\$150K	155	10.5%
\$150K+	59	4.0%

I. Household Type, 2010

Household Type	2000	2000pct	2010	2010pct
Total Households	1,631	100.0%	1,567	100.0%
Family Households	984	60.3%	906	57.8%
Husband-wife, no children w/children	298	18.3%	212	13.5%
Female head, no husband, w/ children	93	5.7%	95	6.1%
Male head, no wife, w/ children	24	1.5%	27	1.7%
Without children	569	34.9%	572	36.5%
Nonfamily households	647	39.7%	661	42.2%
Living alone	592	36.3%	562	35.9%
Other nonfamily	55	3.4%	99	6.3%

J. Household Type by Race and Ethnicity, 2008-2012

Household Type	White, NH	Black, NH	Other, NH	Hispanic
Total Households	1,494	35	28	18
Husband wife family	42.8%	28.6%	28.6%	16.7%
Family with male head, no wife	3.9%	5.7%	7.1%	0.0%
family with female head, no husband	11.7%	14.3%	10.7%	16.7%
Living alone	35.6%	42.9%	39.3%	44.4%
Other nonfamily	6.0%	8.6%	14.3%	22.2%

K. Poverty, 2008-2012

Families	Poverty	PA
All families	4.9%	9.1%
Families w/ related children	12.6%	15.3%
Female householder, no husband present	43.5%	28.8%
Female householder, no husband present, w/ related children	61.7%	39.2%
All people	11.8%	13.1%
Under 18 years	16.2%	18.4%
18 to 64 years	9.0%	12.3%
65 years and over	15.3%	8.4%

L. Educational Attainment by Race and Ethnicity, 2008-2012

Education Level	White, NH	Black	Other	Hispanic	Total
Population 25 years and over	2,299	15	113	17	2,427
Less than high school	7.0%	0.0%	0%	0.0%	6.6%
High school graduate (includes equivalency	42.8%	66.7%	19%	0.0%	41.9%
Some college or associates degree	28.8%	0.0%	75%	64.7%	30.7%
Bachelors degree or higher	21.4%	33.3%	5%	35.3%	20.8%

M. Occupation, 2008-2012

Occupation	Estimate	Percent
Civilian population age 16 years and over	1,663	100.0%
Management, professional, and related occupations	472	28.4%
Service occupations	295	17.7%
Sales and office occupations	322	19.4%
Farming, fishing, and forestry occupations	0	0.0%
Construction, extraction, maintenance, and repair occupations	218	13.1%
Production, transportation, and material moving occupations	356	21.4%

N. Class of Worker, 2008-2012

Occupation	Estimate	Percent
Civilian population age 16 years and over	1,663	100.0%
Private, for profit, wage and salary employee	1,212	72.9%
Private, not for profit, wage and salary employee	125	7.5%
Private, for profit, wage and salary self-employed in own business	25	1.5%
Government workers	210	12.6%
Self-employed in own not incorporated business	91	5.5%
Unpaid family workers in family business	0	0.0%