

## Demographic Profile Brentwood Library

**Population Growth:** The total population of the Brentwood Library service area decreased by -7.9 percent over the past decade to 9,643; this decline rate was lower than the statewide rate of 3.4 percent.

**Age and Sex:** In 2010, the Brentwood Library service area had a total population of 9,643 - 4,716 males (48.9 percent) and 4,927 females (51.1 percent). The age structure of the population in 2010 was as follows: 22.3 percent of the population was under 20 years old, 63.6 percent was 20 to 64 years old and 14.1 percent was 65 years or older.

**Race and Ethnicity:** For people reporting one race alone, not of Hispanic ethnicity, 94.0 percent were White; 2.0 percent were Black or African American; 2.3 percent were Other Race Alone.<sup>1</sup> A total of 169 or 1.8 percent of the population were Hispanic.<sup>2</sup>

**Households:** In 2010, there were 4,379 households in the Brentwood Library service area. The average household size was 2.20 people. Families made up 56.3 percent of the households. This figure includes both families with (23.7 percent) and without (32.6 percent) children. Of families with children less than 18 years old, 15.3 percent were married-couple families, 6.0 percent were female householder families with no husband present, and the remaining (2.3 percent) were male-headed households with no wife present.

**Education:** The educational attainment of the population 25 years and over was lower in the Brentwood Library service area than in Pennsylvania. During the period 2008-2012, 25.3 percent of residents had earned a Bachelor's degree or higher, compared with 27.0 percent statewide. A total of 426 or 6.1 percent had not completed high school, compared with 11.7 percent for the commonwealth as a whole.

**Income and Poverty:** Households with incomes of less than \$25,000 (28.8 percent) made up the largest percent of households in the Brentwood Library service area in 2008-2012. For comparison, 23.6 percent of commonwealth households were in this range during the period.

In 2008-2012, the overall poverty rate for the Brentwood Library service area was higher than Pennsylvania (14.0 percent compared to 13.1 percent). The poverty rate for the population under 18 years of age was 23.5 percent, compared with 12.6 percent of people 18 to 64 years and 8.3 percent for those aged 65 years and over. A total of 268 or 11.0 percent of all families had incomes below poverty level. In 2008-2012, 20.3 percent of families with related children and 33.9 percent of families with a female householder and no husband with related children present had incomes below the poverty level.

**Class of Worker and Occupation:** In 2008-2012, 88.3 percent of the workforce was private wage and salary workers; 8.3 percent were federal, state, or local government workers; and 3.5 percent were self-employed in their own (not incorporated) business.

The top occupation group for the civilian employed population 16 years and over in the Brentwood Library service area in 2008-2012 was Management, business, science, and arts (40.2 percent).

---

<sup>1</sup> Other race includes those who identified themselves as American Indian/Alaska Native, Asian, Native Hawaiian/Other Pacific Islander, Some Other Race and Two or More Races on the 2010 Census form.

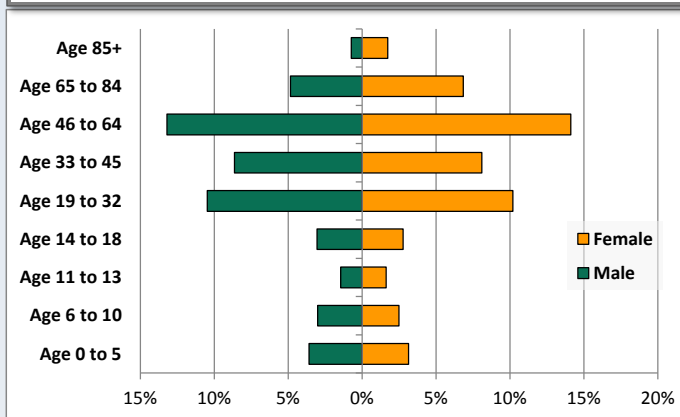
<sup>2</sup> People of Hispanic origin may be of any race.

# Demographic Profile

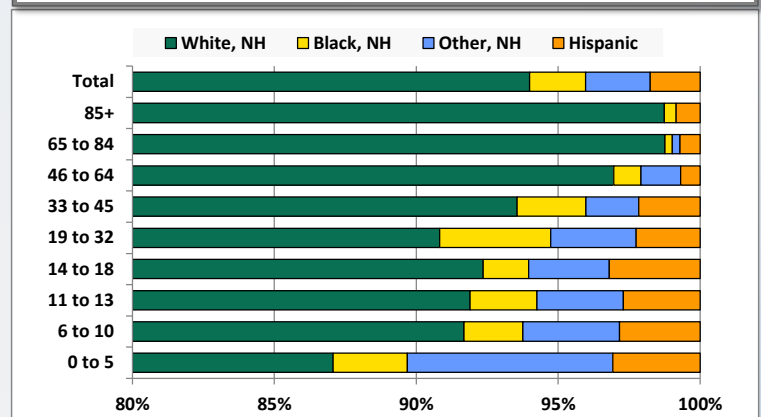
Brentwood Library

Key Indicators		
	2000	2010
<b>Population Growth</b>		
Total Population	10,466	9,643
10-Year Growth	N/A	-7.9%
<b>Diversity</b>		
White Alone, Non-Hispanic	97.4%	94.0%
Black Alone, Non-Hispanic	0.5%	2.0%
Other Race Alone, Non-Hispanic	1.4%	2.3%
Percent Hispanic	0.7%	1.8%
<b>Aging</b>		
Percent 65 Years and Over	17.8%	14.1%
<b>Households</b>		
Percent Married Couple with Own Children	19.1%	15.3%
Percent Living Alone	35.9%	36.5%

Population by Library-Defined Age Group, 2010



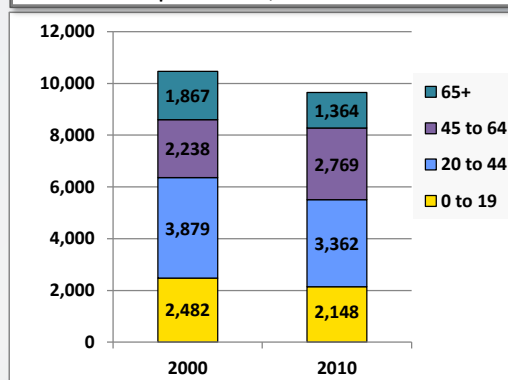
Race/Ethnicity by Library-Defined Age Group, 2010



Population Growth by Library-Defined Age Group, 2000 to 2010

Age Group	2010	Change	
		Numeric	Percent
Total	9,643	-823	-7.9%
85+	237	19	8.7%
65 to 84	1,127	-522	-31.7%
46 to 64	2,633	541	25.9%
33 to 45	1,614	-553	-25.5%
19 to 32	1,994	1	0.1%
14 to 18	563	-78	-12.2%
11 to 13	296	-112	-27.5%
6 to 10	529	-95	-15.2%
0 to 5	650	-24	-3.6%

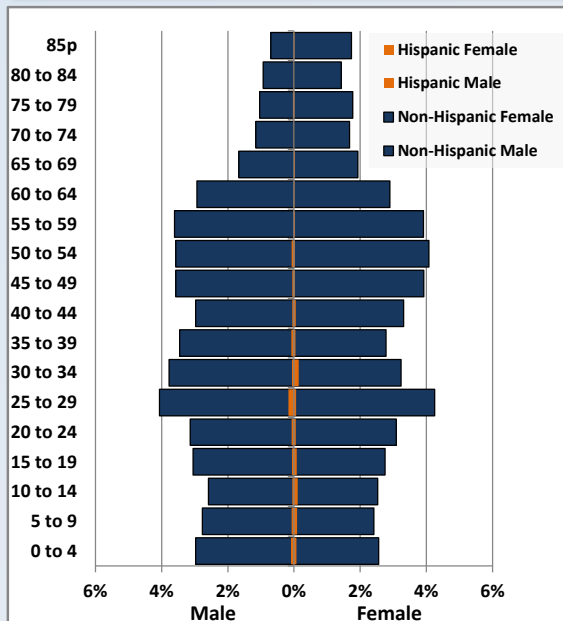
Population Total, 2000 and 2010



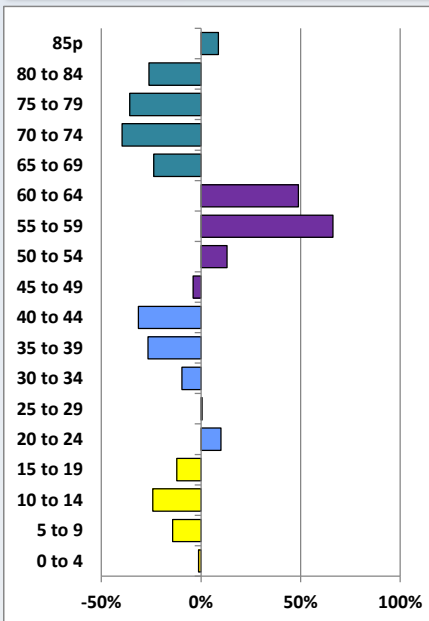
# Demographic Profile

Brentwood Library

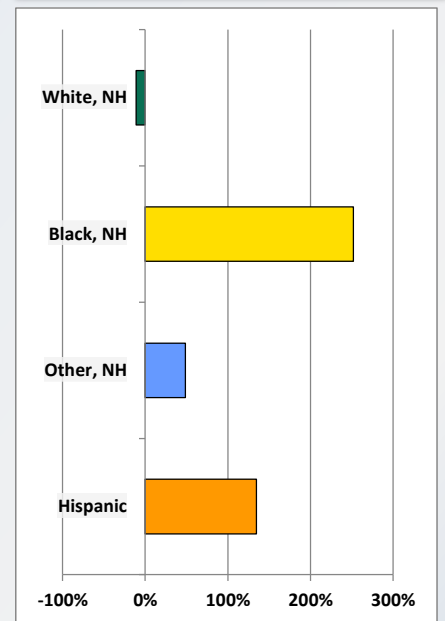
Population by 5-Year Age Cohorts



Pop Change by Age, 2000 to 2010

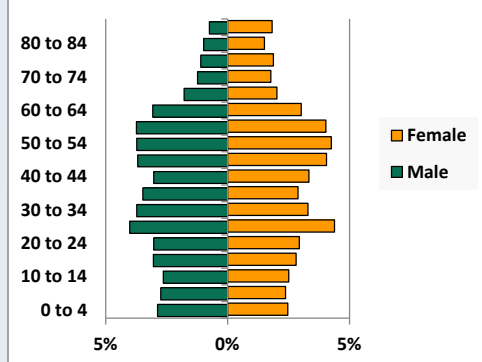


Pop Change by Race/Ethnicity, 2000 to 2010

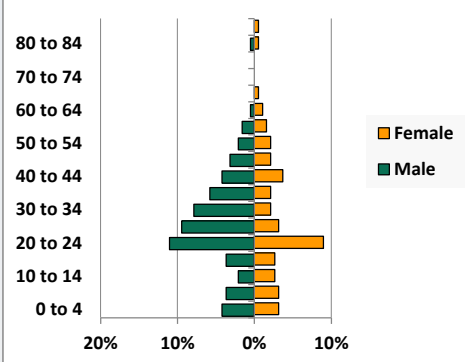


Population by Age, Race and Ethnicity 2010

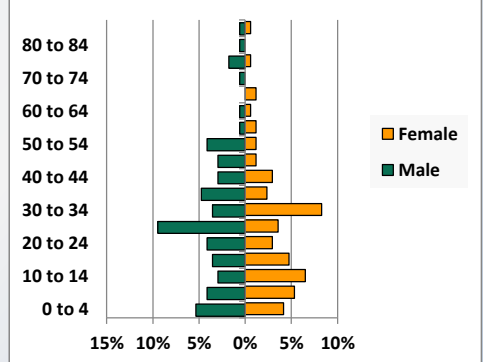
White, Not Hispanic



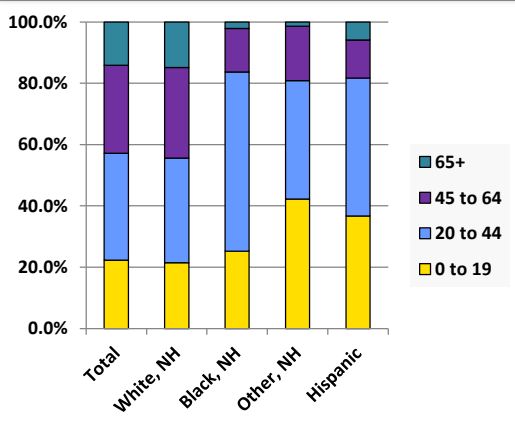
Black, Non-Hispanic



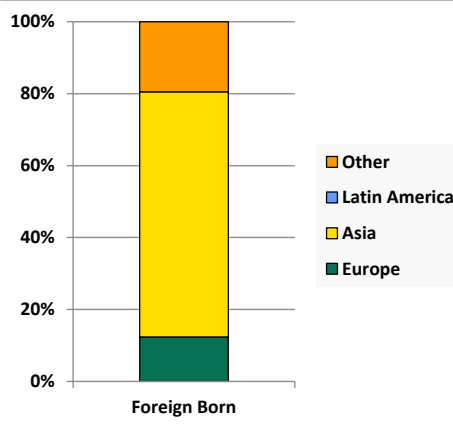
Hispanic



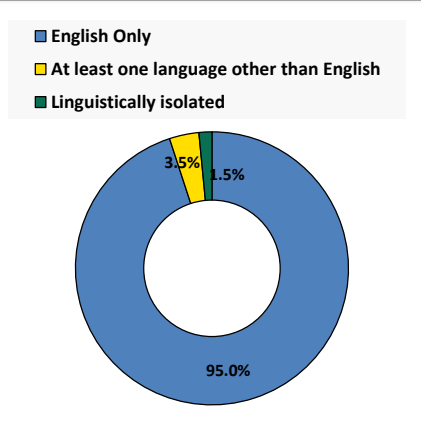
Age by Race and Ethnicity, 2010



Foreign Born, 2010



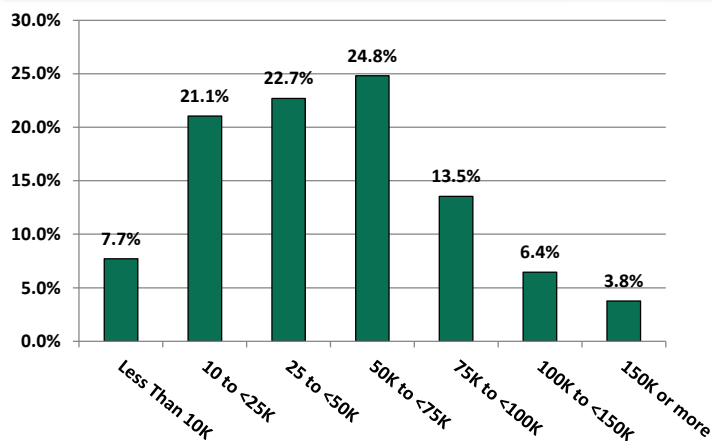
Household Language, 2010



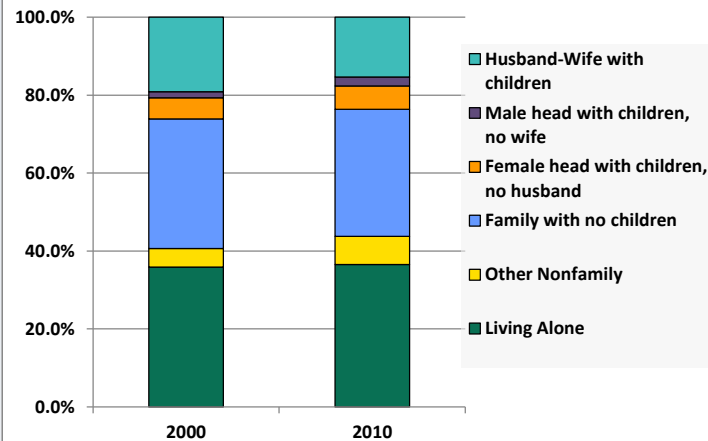
# Demographic Profile

Brentwood Library

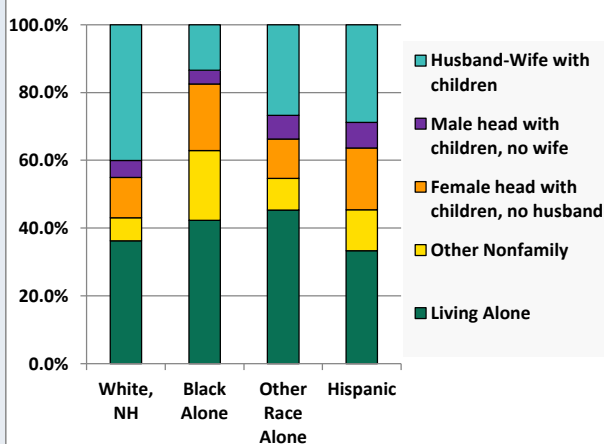
Household Income Distribution, 2008-2012



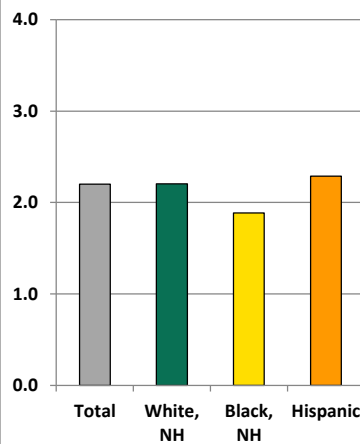
Household Type, 2000 and 2010



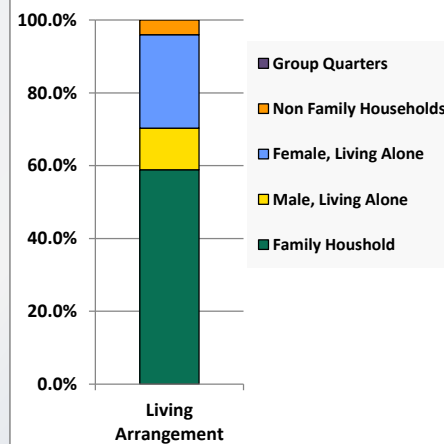
Household Type by Race/Ethnicity, 2010



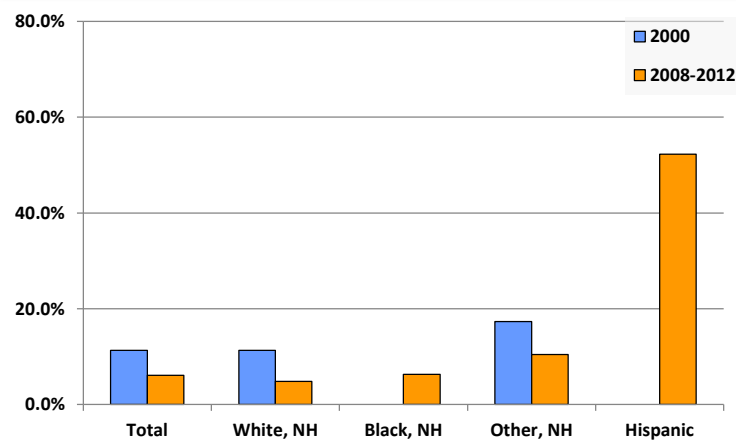
Average Household Size, 2010



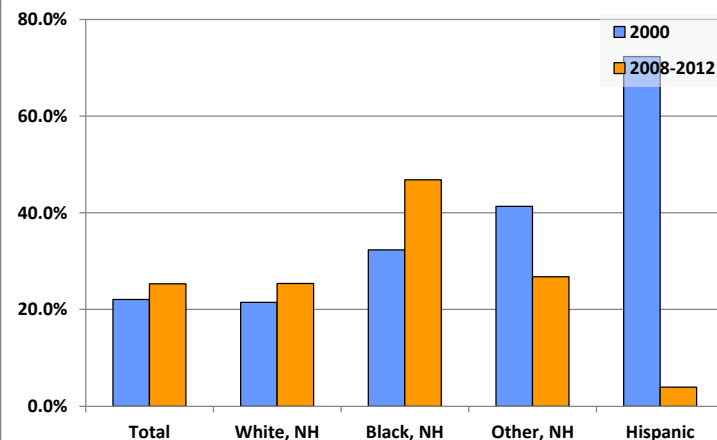
Living Arrangements 65+, 2008-2012



Percent of Adults that Did Not Complete High School



Percent of Adults Who Attained a Bachelor's Degree or Higher



# Reference Data

## Brentwood Library

					Detail for Other, Non-Hispanic					
	Total Population	White, Non- Hispanic	Black, Non- Hispanic	Other, Non- Hispanic	AIAN	Asian	NHOPI	Some Other	Two or More	Hispanic or
								Race	Races	Latino
A. Total Population										
2000 Total	10,466	10,192	54	148	24	57	1	15	51	72
2000 pct of Total	100.0%	97.4%	0.5%	1.4%	0.2%	0.5%	0.0%	0.1%	0.5%	0.7%
2010 Total	9,643	9,064	190	220	13	76	4	12	115	169
2010 pct of Total	100.0%	94.0%	2.0%	2.3%	0.1%	0.8%	0.0%	0.1%	1.2%	1.8%
B. Population by Major Age Groups by Race and Ethnicity										
2000										
0-19	2,482	2,383	19	60	11	15	0	11	23	20
20-64	6,117	5,960	33	84	11	40	1	4	28	40
65+	1,867	1,849	2	4	2	2	0	0	0	12
85+	218	217	0	1	0	1	0	0	0	0
2010										
0-19	2,148	1,945	48	93	3	14	2	7	67	62
20-64	6,131	5,772	138	124	10	60	2	5	47	97
65+	1,364	1,347	4	3	0	2	0	0	1	10
85+	237	234	1	0	0	0	0	0	0	2
C. Age Mix for Each Racial and Ethnic Group										
2000										
0-19	23.7%	23.4%	35.2%	40.5%	45.8%	26.3%	0.0%	73.3%	45.1%	27.8%
20-64	58.4%	58.5%	61.1%	56.8%	45.8%	70.2%	100.0%	26.7%	54.9%	55.6%
65+	17.8%	18.1%	3.7%	2.7%	8.3%	3.5%	0.0%	0.0%	0.0%	16.7%
85+	2.1%	2.1%	0.0%	0.7%	0.0%	1.8%	0.0%	0.0%	0.0%	0.0%
2010										
0-19	22.3%	21.5%	25.3%	42.3%	23.1%	18.4%	50.0%	58.3%	58.3%	36.7%
20-64	63.6%	63.7%	72.6%	56.4%	76.9%	78.9%	50.0%	41.7%	40.9%	57.4%
65+	14.1%	14.9%	2.1%	1.4%	0.0%	2.6%	0.0%	0.0%	0.9%	5.9%
85+	2.5%	2.6%	0.5%	0.0%	0.0%	0.0%	0.0%	0.0%	0.0%	1.2%
D. Racial and Ethnic Composition of Each Age Group										
2000										
0-19	100.0%	96.0%	0.8%	2.4%	0.4%	0.6%	0.0%	0.4%	0.9%	0.8%
20-64	100.0%	97.4%	0.5%	1.4%	0.2%	0.7%	0.0%	0.1%	0.5%	0.7%
65+	100.0%	99.0%	0.1%	0.2%	0.1%	0.1%	0.0%	0.0%	0.0%	0.6%
85+	100.0%	99.5%	0.0%	0.5%	0.0%	0.5%	0.0%	0.0%	0.0%	0.0%
2010										
0-19	100.0%	90.5%	2.2%	4.3%	0.1%	0.7%	0.1%	0.3%	3.1%	2.9%
20-64	100.0%	94.1%	2.3%	2.0%	0.2%	1.0%	0.0%	0.1%	0.8%	1.6%
65+	100.0%	98.8%	0.3%	0.2%	0.0%	0.1%	0.0%	0.0%	0.1%	0.7%
85+	100.0%	98.7%	0.4%	0.0%	0.0%	0.0%	0.0%	0.0%	0.0%	0.8%
E. Population Growth										
2000-2010, Change										
0-19	-334	-438	29	33	-8	-1	2	-4	44	42
20-64	14	-188	105	40	-1	20	1	1	19	57
65+	-503	-502	2	-1	-2	0	0	0	1	-2
85+	19	17	1	-1	0	-1	0	0	0	2
Total	-823	-1,128	136	72	-11	19	3	-3	64	97
2000-2010, Pct Change										
0-19	-13.5%	-18.4%	152.6%	55.0%	-72.7%	-6.7%	0.0%	-36.4%	191.3%	210.0%
20-64	0.2%	-3.2%	318.2%	47.6%	-9.1%	50.0%	100.0%	25.0%	67.9%	142.5%
65+	-26.9%	-27.1%	100.0%	-25.0%	-100.0%	0.0%	0.0%	0.0%	0.0%	-16.7%
85+	8.7%	7.8%	0.0%	-100.0%	0.0%	-100.0%	0.0%	0.0%	0.0%	0.0%
Total	-7.9%	-11.1%	251.9%	48.6%	-45.8%	33.3%	300.0%	-20.0%	125.5%	134.7%

# Reference Data

## Brentwood Library

	Total Population	White, Non- Hispanic	Black, Non- Hispanic	Other, Non- Hispanic	Detail for Other, Non-Hispanic					Hispanic or Latino
					AIAN	Asian	NHOPI	Some Other	Two or More	
								Race	Races	
F. Population by Library-Defined Age Groups, 2010										
0-5	650	566	17	47	0	5	1	2	39	20
6-10	529	485	11	18	0	1	1	4	12	15
11-13	296	272	7	9	0	1	0	1	7	8
14-18	563	520	9	16	2	5	0	0	9	18
19-32	1,994	1,811	78	60	7	31	0	1	21	45
33-45	1,614	1,510	39	30	1	14	1	1	13	35
46-64	2,633	2,553	25	37	3	17	1	3	13	18
65-84	1,127	1,113	3	3	0	2	0	0	1	8
85+	237	234	1	0	0	0	0	0	0	2
Total	9,643	9,064	190	220	13	76	4	12	115	169
G. Population by 5-Year Age Cohorts, 2010										
0-4	550	484	14	36	0	3	1	0	32	16
5-9	516	464	13	23	0	2	1	5	15	16
10-14	509	467	9	17	0	2	0	2	13	16
15-19	573	530	12	17	3	7	0	0	7	14
20-24	613	541	38	22	2	9	0	0	11	12
25-29	824	760	24	18	2	10	0	1	5	22
30-34	696	636	19	21	2	12	0	0	7	20
35-39	613	577	15	9	0	2	0	0	7	12
40-44	616	576	15	15	1	9	1	1	3	10
45-49	730	702	10	11	1	5	0	2	3	7
50-54	747	724	8	6	0	1	1	1	3	9
55-59	728	704	6	15	2	8	0	0	5	3
60-64	564	552	3	7	0	4	0	0	3	2
65-69	349	345	1	1	0	0	0	0	1	2
70-74	274	272	0	1	0	1	0	0	0	1
75-79	275	270	0	1	0	1	0	0	0	4
80-84	229	226	2	0	0	0	0	0	0	1
85-89	163	160	1	0	0	0	0	0	0	2
90-94	67	67	0	0	0	0	0	0	0	0
95-99	6	6	0	0	0	0	0	0	0	0
100+	1	1	0	0	0	0	0	0	0	0
Total	9,643	9,064	190	220	13	76	4	12	115	169

Source: Decennial Census 2010, 2000, American Community Survey 2008-2012  
 Prepared for the Pennsylvania State Library by The Pennsylvania State Data Center, 9/2014

# Reference Data

## Brentwood Library

### H. Income Distribution, 2008-2012

Range (in thousands)	Households	Pct of Total
<\$10K	333	7.7%
\$10K to <\$25K	909	21.1%
\$25K to <\$50K	979	22.7%
\$50K to <\$75K	1,071	24.8%
\$75K to <\$100K	584	13.5%
\$100K to <\$150K	278	6.4%
\$150K+	162	3.8%

### I. Household Type, 2010

Household Type	2000	2000pct	2010	2010pct
Total Households	4,658	100.0%	4,379	100.0%
Family Households	2,763	59.3%	2,464	56.3%
Husband-wife, no children w/children	891	19.1%	672	15.3%
Female head, no husband, w/ children	251	5.4%	263	6.0%
Male head, no wife, w/ children	73	1.6%	101	2.3%
Without children	1,548	33.2%	1,428	32.6%
Nonfamily households	1,895	40.7%	1,915	43.7%
Living alone	1,671	35.9%	1,600	36.5%
Other nonfamily	224	4.8%	315	7.2%

### J. Household Type by Race and Ethnicity, 2008-2012

Household Type	White, NH	Black, NH	Other, NH	Hispanic
Total Households	4,153	97	86	66
Husband wife family	40.1%	13.4%	26.7%	28.8%
Family with male head, no wife	5.0%	4.1%	7.0%	7.6%
family with female head, no husband	11.8%	19.6%	11.6%	18.2%
Living alone	36.3%	42.3%	45.3%	33.3%
Other nonfamily	6.8%	20.6%	9.3%	12.1%

### K. Poverty, 2008-2012

Families	Poverty	PA
All families	11.0%	9.1%
Families w/ related children	20.3%	15.3%
Female householder, no husband present	23.5%	28.8%
Female householder, no husband present, w/ related children	33.9%	39.2%
All people	14.0%	13.1%
Under 18 years	23.5%	18.4%
18 to 64 years	12.6%	12.3%
65 years and over	8.3%	8.4%

### L. Educational Attainment by Race and Ethnicity, 2008-2012

Education Level	White, NH	Black	Other	Hispanic	Total
Population 25 years and over	6,502	143	153	178	6,971
Less than high school	4.8%	6.3%	10%	52.2%	6.1%
High school graduate (includes equivalency)	38.8%	0.0%	12%	14.0%	36.8%
Some college or associates degree	31.0%	46.9%	50%	29.8%	31.7%
Bachelors degree or higher	25.4%	46.9%	27%	3.9%	25.3%

### M. Occupation, 2008-2012

Occupation	Estimate	Percent
Civilian population age 16 years and over	5,251	100.0%
Management, professional, and related occupations	2,110	40.2%
Service occupations	732	13.9%
Sales and office occupations	1,390	26.5%
Farming, fishing, and forestry occupations	0	0.0%
Construction, extraction, maintenance, and repair occupations	356	6.8%
Production, transportation, and material moving occupations	663	12.6%

### N. Class of Worker, 2008-2012

Occupation	Estimate	Percent
Civilian population age 16 years and over	5,251	100.0%
Private, for profit, wage and salary employee	3,837	73.1%
Private, not for profit, wage and salary employee	739	14.1%
Private, for profit, wage and salary self-employed in own business	59	1.1%
Government workers	434	8.3%
Self-employed in own not incorporated business	182	3.5%
Unpaid family workers in family business	0	0.0%