

Demographic Profile C. C. Mellor Memorial Library

Population Growth: The total population of the C. C. Mellor Memorial Library service area decreased by -7.7 percent over the past decade to 20,884; this decline rate was lower than the statewide rate of 3.4 percent.

Age and Sex: In 2010, the C. C. Mellor Memorial Library service area had a total population of 20,884 - 9,728 males (46.6 percent) and 11,156 females (53.4 percent). The age structure of the population in 2010 was as follows: 17.7 percent of the population was under 20 years old, 61.4 percent was 20 to 64 years old and 21.0 percent was 65 years or older.

Race and Ethnicity: For people reporting one race alone, not of Hispanic ethnicity, 82.6 percent were White; 12.2 percent were Black or African American; 3.6 percent were Other Race Alone.¹ A total of 330 or 1.6 percent of the population were Hispanic.²

Households: In 2010, there were 10,205 households in the C. C. Mellor Memorial Library service area. The average household size was 2.05 people. Families made up 55.8 percent of the households. This figure includes both families with (18.4 percent) and without (37.4 percent) children. Of families with children less than 18 years old, 12.9 percent were married-couple families, 4.3 percent were female householder families with no husband present, and the remaining (1.1 percent) were male-headed households with no wife present.

Education: The educational attainment of the population 25 years and over was higher in the C. C. Mellor Memorial Library service area than in Pennsylvania. During the period 2008-2012, 45.4 percent of residents had earned a Bachelor's degree or higher, compared with 27.0 percent statewide. A total of 714 or 4.5 percent had not completed high school, compared with 11.7 percent for the commonwealth as a whole.

Income and Poverty: Households with incomes of \$25,000 to \$49,999 (23.6 percent) made up the largest percent of households in the C. C. Mellor Memorial Library service area in 2008-2012. For comparison, 24.4 percent of commonwealth households were in this range during the period.

In 2008-2012, the overall poverty rate for the C. C. Mellor Memorial Library service area was lower than Pennsylvania (10.3 percent compared to 13.1 percent). The poverty rate for the population under 18 years of age was 15.8 percent, compared with 9.6 percent of people 18 to 64 years and 7.6 percent for those aged 65 years and over. A total of 380 or 6.9 percent of all families had incomes below poverty level. In 2008-2012, 13.3 percent of families with related children and 37.1 percent of families with a female householder and no husband with related children present had incomes below the poverty level.

Class of Worker and Occupation: In 2008-2012, 84.3 percent of the workforce was private wage and salary workers; 9.4 percent were federal, state, or local government workers; and 6.2 percent were self-employed in their own (not incorporated) business.

The top occupation group for the civilian employed population 16 years and over in the C. C. Mellor Memorial Library service area in 2008-2012 was Management, business, science, and arts (51.0 percent).

¹ Other race includes those who identified themselves as American Indian/Alaska Native, Asian, Native Hawaiian/Other Pacific Islander, Some Other Race and Two or More Races on the 2010 Census form.

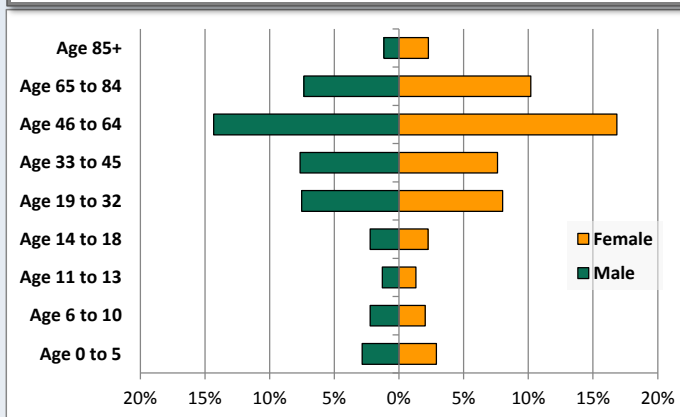
² People of Hispanic origin may be of any race.

Demographic Profile

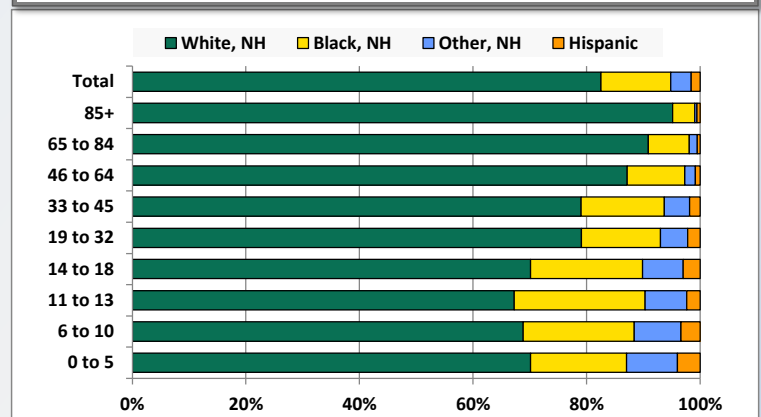
C. C. Mellor Memorial Library

Key Indicators		
	2000	2010
Population Growth		
Total Population	22,623	20,884
10-Year Growth	N/A	-7.7%
Diversity		
White Alone, Non-Hispanic	90.4%	82.6%
Black Alone, Non-Hispanic	6.3%	12.2%
Other Race Alone, Non-Hispanic	2.5%	3.6%
Percent Hispanic	0.8%	1.6%
Aging		
Percent 65 Years and Over	22.6%	21.0%
Households		
Percent Married Couple with Own Children	16.8%	12.9%
Percent Living Alone	33.5%	38.3%

Population by Library-Defined Age Group, 2010



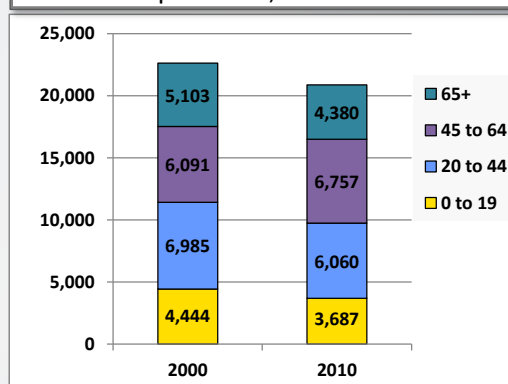
Race/Ethnicity by Library-Defined Age Group, 2010



Population Growth by Library-Defined Age Group, 2000 to 2010

Age Group	2010	Change	
		Numeric	Percent
Total	20,884	-1,739	-7.7%
85+	719	214	42.4%
65 to 84	3,661	-937	-20.4%
46 to 64	6,512	831	14.6%
33 to 45	3,184	-1,248	-28.2%
19 to 32	3,244	135	4.3%
14 to 18	935	-158	-14.5%
11 to 13	547	-141	-20.5%
6 to 10	886	-290	-24.7%
0 to 5	1,196	-145	-10.8%

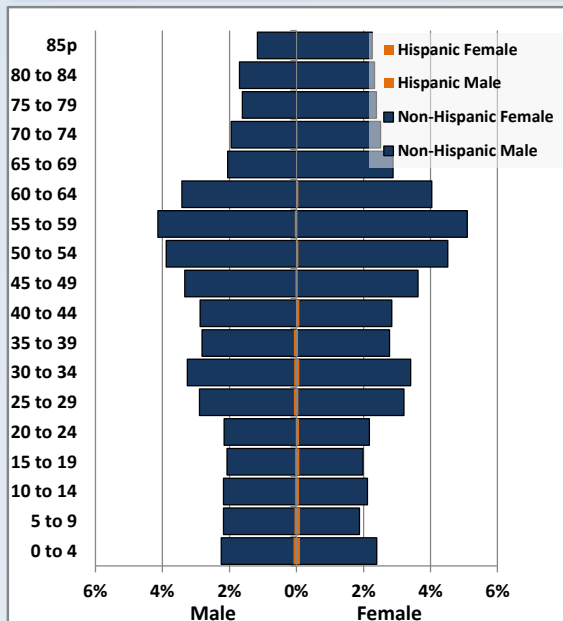
Population Total, 2000 and 2010



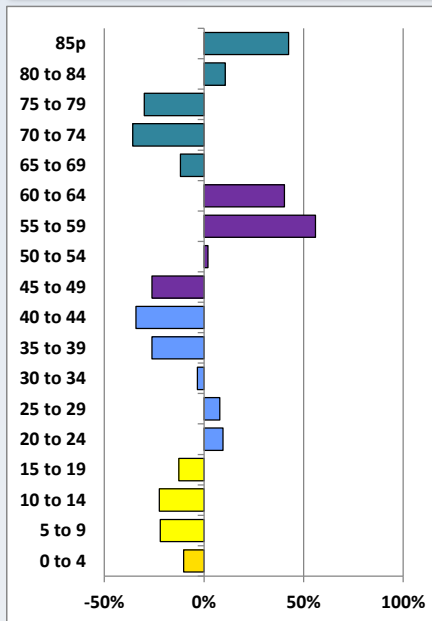
Demographic Profile

C. C. Mellor Memorial Library

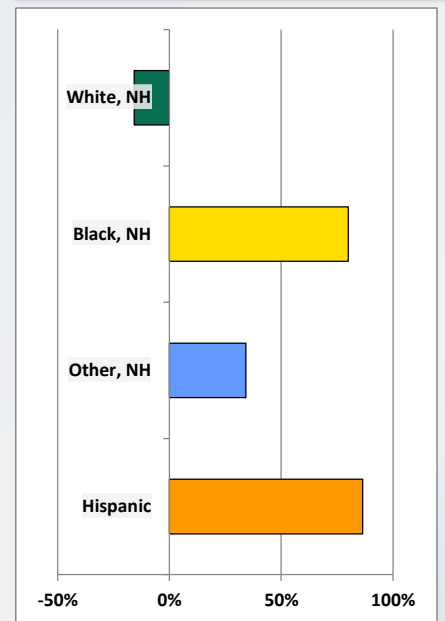
Population by 5-Year Age Cohorts



Pop Change by Age, 2000 to 2010

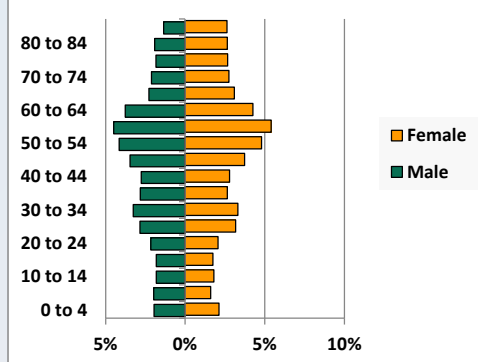


Pop Change by Race/Ethnicity, 2000 to 2010

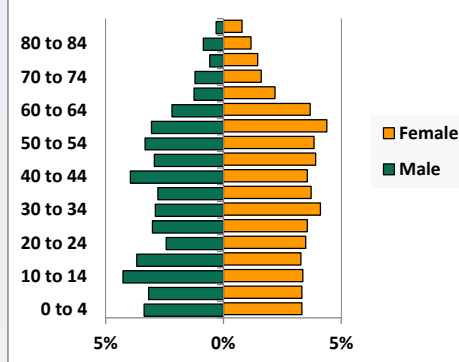


Population by Age, Race and Ethnicity 2010

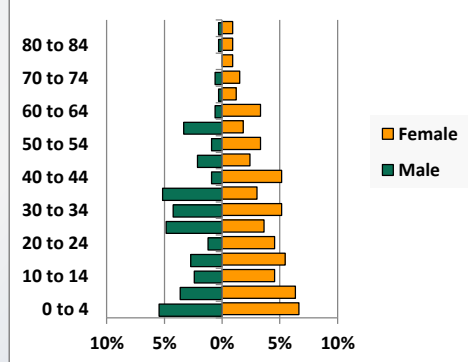
White, Not Hispanic



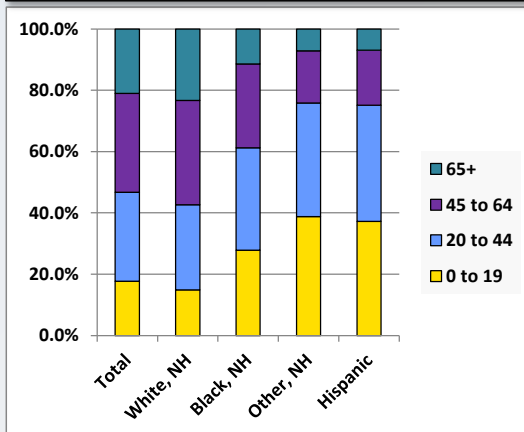
Black, Non-Hispanic



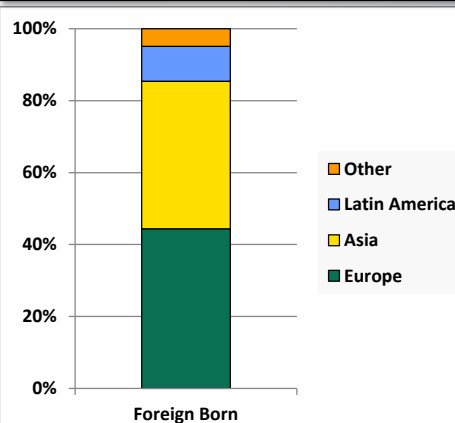
Hispanic



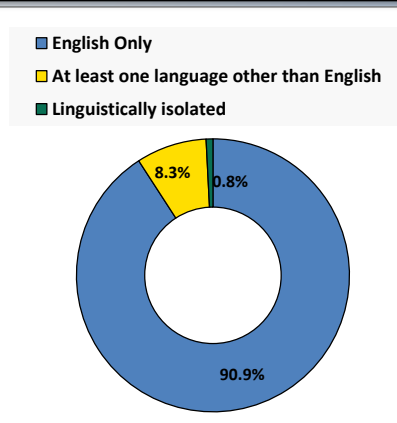
Age by Race and Ethnicity, 2010



Foreign Born, 2010



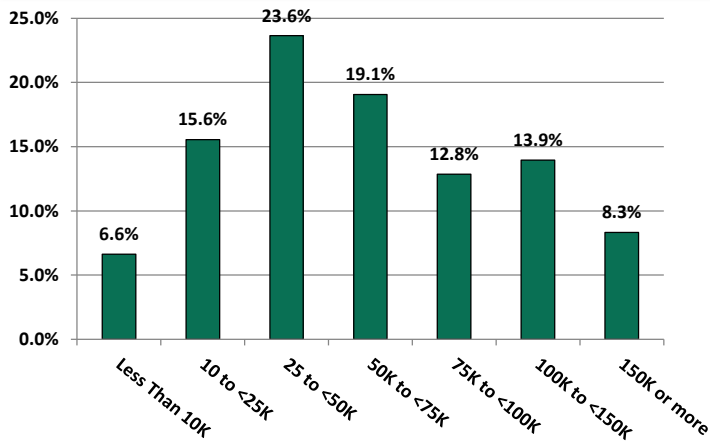
Household Language, 2010



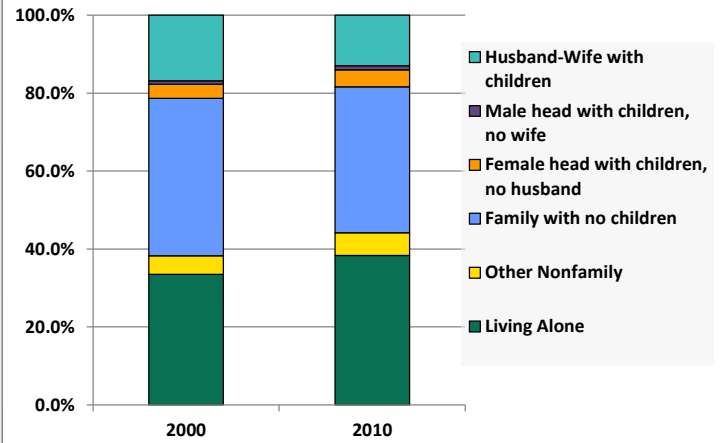
Demographic Profile

C. C. Mellor Memorial Library

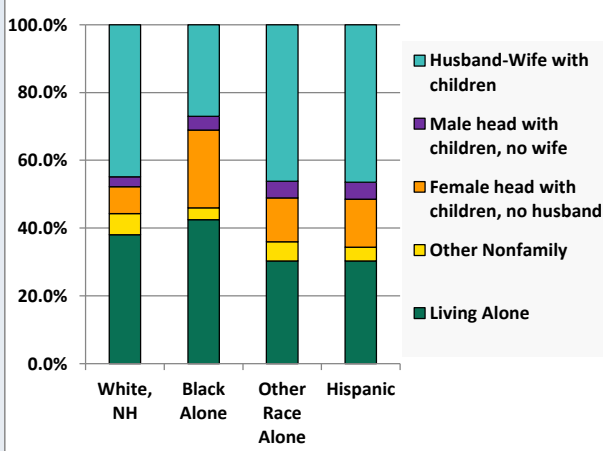
Household Income Distribution, 2008-2012



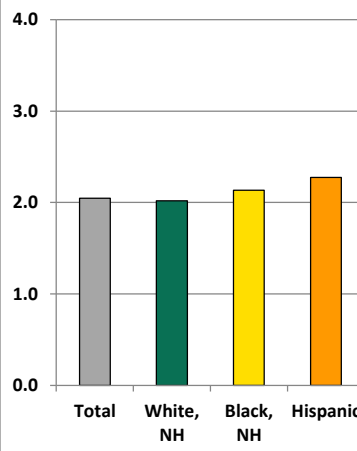
Household Type, 2000 and 2010



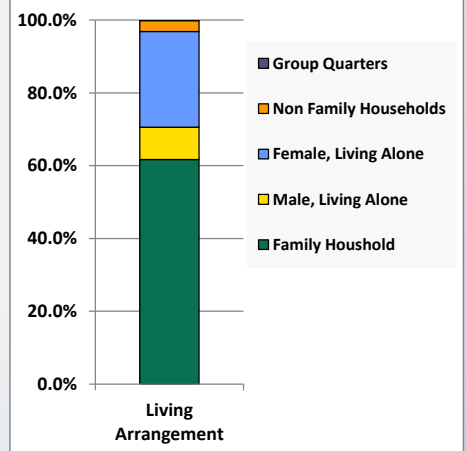
Household Type by Race/Ethnicity, 2010



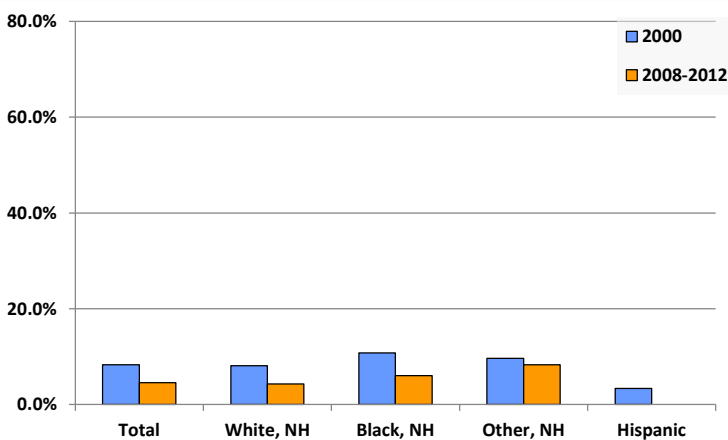
Average Household Size, 2010



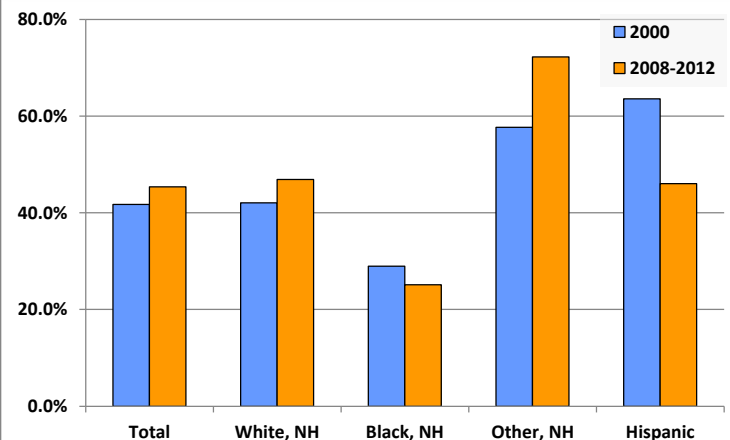
Living Arrangements 65+, 2008-2012



Percent of Adults that Did Not Complete High School



Percent of Adults Who Attained a Bachelor's Degree or Higher



Reference Data

C. C. Mellor Memorial Library

	Total Population	White, Non- Hispanic	Black, Non- Hispanic	Other, Non- Hispanic	Detail for Other, Non-Hispanic					Hispanic or Latino
					AIAN	Asian	NHOPI	Some Other Race	Two or More Races	
A. Total Population										
2000 Total	22,623	20,462	1,420	564	23	321	7	31	182	177
2000 pct of Total	100.0%	90.4%	6.3%	2.5%	0.1%	1.4%	0.0%	0.1%	0.8%	0.8%
2010 Total	20,884	17,241	2,556	757	34	376	3	44	300	330
2010 pct of Total	100.0%	82.6%	12.2%	3.6%	0.2%	1.8%	0.0%	0.2%	1.4%	1.6%
B. Population by Major Age Groups by Race and Ethnicity										
2000										
0-19	4,444	3,784	396	209	13	87	1	15	93	55
20-64	13,076	11,760	898	310	9	209	5	15	72	108
65+	5,103	4,918	126	45	1	25	1	1	17	14
85+	505	488	9	6	0	3	0	0	3	2
2010										
0-19	3,687	2,560	710	294	14	83	0	27	170	123
20-64	12,817	10,670	1,554	409	17	254	3	16	119	184
65+	4,380	4,011	292	54	3	39	0	1	11	23
85+	719	684	28	3	0	2	0	0	1	4
C. Age Mix for Each Racial and Ethnic Group										
2000										
0-19	19.6%	18.5%	27.9%	37.1%	56.5%	27.1%	14.3%	48.4%	51.1%	31.1%
20-64	57.8%	57.5%	63.2%	55.0%	39.1%	65.1%	71.4%	48.4%	39.6%	61.0%
65+	22.6%	24.0%	8.9%	8.0%	4.3%	7.8%	14.3%	3.2%	9.3%	7.9%
85+	2.2%	2.4%	0.6%	1.1%	0.0%	0.9%	0.0%	0.0%	1.6%	1.1%
2010										
0-19	17.7%	14.8%	27.8%	38.8%	41.2%	22.1%	0.0%	61.4%	56.7%	37.3%
20-64	61.4%	61.9%	60.8%	54.0%	50.0%	67.6%	100.0%	36.4%	39.7%	55.8%
65+	21.0%	23.3%	11.4%	7.1%	8.8%	10.4%	0.0%	2.3%	3.7%	7.0%
85+	3.4%	4.0%	1.1%	0.4%	0.0%	0.5%	0.0%	0.0%	0.3%	1.2%
D. Racial and Ethnic Composition of Each Age Group										
2000										
0-19	100.0%	85.1%	8.9%	4.7%	0.3%	2.0%	0.0%	0.3%	2.1%	1.2%
20-64	100.0%	89.9%	6.9%	2.4%	0.1%	1.6%	0.0%	0.1%	0.6%	0.8%
65+	100.0%	96.4%	2.5%	0.9%	0.0%	0.5%	0.0%	0.0%	0.3%	0.3%
85+	100.0%	96.6%	1.8%	1.2%	0.0%	0.6%	0.0%	0.0%	0.6%	0.4%
2010										
0-19	100.0%	69.4%	19.3%	8.0%	0.4%	2.3%	0.0%	0.7%	4.6%	3.3%
20-64	100.0%	83.2%	12.1%	3.2%	0.1%	2.0%	0.0%	0.1%	0.9%	1.4%
65+	100.0%	91.6%	6.7%	1.2%	0.1%	0.9%	0.0%	0.0%	0.3%	0.5%
85+	100.0%	95.1%	3.9%	0.4%	0.0%	0.3%	0.0%	0.0%	0.1%	0.6%
E. Population Growth										
2000-2010, Change										
0-19	-757	-1,224	314	85	1	-4	-1	12	77	68
20-64	-259	-1,090	656	99	8	45	-2	1	47	76
65+	-723	-907	166	9	2	14	-1	0	-6	9
85+	214	196	19	-3	0	-1	0	0	-2	2
Total	-1,739	-3,221	1,136	193	11	55	-4	13	118	153
2000-2010, Pct Change										
0-19	-17.0%	-32.3%	79.3%	40.7%	7.7%	-4.6%	-100.0%	80.0%	82.8%	123.6%
20-64	-2.0%	-9.3%	73.1%	31.9%	88.9%	21.5%	-40.0%	6.7%	65.3%	70.4%
65+	-14.2%	-18.4%	131.7%	20.0%	200.0%	56.0%	-100.0%	0.0%	-35.3%	64.3%
85+	42.4%	40.2%	211.1%	-50.0%	0.0%	-33.3%	0.0%	0.0%	-66.7%	100.0%
Total	-7.7%	-15.7%	80.0%	34.2%	47.8%	17.1%	-57.1%	41.9%	64.8%	86.4%

Source: Decennial Census 2010, 2000, American Community Survey 2008-2012

Prepared for the Pennsylvania State Library by The Pennsylvania State Data Center, 9/2014

Reference Data

C. C. Mellor Memorial Library

	Total Population	White, Non- Hispanic	Black, Non- Hispanic	Other, Non- Hispanic	Detail for Other, Non-Hispanic					Hispanic or Latino
					AIAN	Asian	NHOPI	Some Other	Two or More	
								Race	Races	
F. Population by Library-Defined Age Groups, 2010										
0-5	1,196	839	202	107	2	29	0	4	72	48
6-10	886	610	173	73	2	26	0	9	36	30
11-13	547	368	126	40	4	11	0	6	19	13
14-18	935	656	184	67	4	16	0	7	40	28
19-32	3,244	2,565	452	155	8	86	0	6	55	72
33-45	3,184	2,516	467	141	3	95	2	1	40	60
46-64	6,512	5,676	660	120	8	74	1	10	27	56
65-84	3,661	3,327	264	51	3	37	0	1	10	19
85+	719	684	28	3	0	2	0	0	1	4
Total	20,884	17,241	2,556	757	34	376	3	44	300	330
G. Population by 5-Year Age Cohorts, 2010										
0-4	1,010	705	171	94	1	25	0	4	64	40
5-9	881	617	166	65	1	24	0	7	33	33
10-14	921	625	195	78	7	21	0	9	41	23
15-19	875	613	178	57	5	13	0	7	32	27
20-24	925	727	151	28	3	15	0	1	9	19
25-29	1,302	1,035	168	71	3	40	0	3	25	28
30-34	1,423	1,135	179	78	0	52	0	2	24	31
35-39	1,195	943	166	59	1	35	2	0	21	27
40-44	1,215	959	192	44	2	33	0	0	9	20
45-49	1,469	1,241	175	38	0	22	0	3	13	15
50-54	1,769	1,544	183	28	1	18	0	1	8	14
55-59	1,947	1,706	190	34	3	18	1	6	6	17
60-64	1,572	1,380	150	29	4	21	0	0	4	13
65-69	1,037	926	88	18	0	16	0	0	2	5
70-74	938	840	72	19	1	11	0	1	6	7
75-79	840	777	52	8	0	6	0	0	2	3
80-84	846	784	52	6	2	4	0	0	0	4
85-89	506	480	21	3	0	2	0	0	1	2
90-94	163	156	6	0	0	0	0	0	0	1
95-99	44	42	1	0	0	0	0	0	0	1
100+	6	6	0	0	0	0	0	0	0	0
Total	20,884	17,241	2,556	757	34	376	3	44	300	330

Source: Decennial Census 2010, 2000, American Community Survey 2008-2012
 Prepared for the Pennsylvania State Library by The Pennsylvania State Data Center, 9/2014

Reference Data

C. C. Mellor Memorial Library

H. Income Distribution, 2008-2012

Range (in thousands)	Households	Pct of Total
<\$10K	655	6.6%
\$10K to <\$25K	1,535	15.6%
\$25K to <\$50K	2,334	23.6%
\$50K to <\$75K	1,881	19.1%
\$75K to <\$100K	1,268	12.8%
\$100K to <\$150K	1,376	13.9%
\$150K+	821	8.3%

I. Household Type, 2010

Household Type	2000	2000pct	2010	2010pct
Total Households	10,463	100.0%	10,205	100.0%
Family Households	6,462	61.8%	5,693	55.8%
Husband-wife, no children w/children	1,760	16.8%	1,321	12.9%
Female head, no husband, w/ children	383	3.7%	439	4.3%
Male head, no wife, w/ children	92	0.9%	114	1.1%
Without children	4,227	40.4%	3,819	37.4%
Nonfamily households	4,001	38.2%	4,512	44.2%
Living alone	3,505	33.5%	3,913	38.3%
Other nonfamily	496	4.7%	599	5.9%

J. Household Type by Race and Ethnicity, 2008-2012

Household Type	White, NH	Black, NH	Other, NH	Hispanic
Total Households	8,660	1,211	264	99
Husband wife family	44.9%	27.0%	46.2%	46.5%
Family with male head, no wife	2.9%	4.1%	4.9%	5.1%
family with female head, no husband	7.9%	22.9%	12.9%	14.1%
Living alone	38.1%	42.5%	30.3%	30.3%
Other nonfamily	6.2%	3.5%	5.7%	4.0%

K. Poverty, 2008-2012

Families	Poverty	PA
All families	6.9%	9.1%
Families w/ related children	13.3%	15.3%
Female householder, no husband present	23.2%	28.8%
Female householder, no husband present, w/ related children	37.1%	39.2%
All people	10.3%	13.1%
Under 18 years	15.8%	18.4%
18 to 64 years	9.6%	12.3%
65 years and over	7.6%	8.4%

L. Educational Attainment by Race and Ethnicity, 2008-2012

Education Level	White, NH	Black	Other	Hispanic	Total
Population 25 years and over	13,646	1,557	411	126	15,727
Less than high school	4.3%	6.0%	8%	0.0%	4.5%
High school graduate (includes equivalency)	24.9%	22.9%	13%	27.8%	24.4%
Some college or associates degree	23.9%	45.9%	6%	26.2%	25.6%
Bachelors degree or higher	46.9%	25.1%	72%	46.0%	45.4%

M. Occupation, 2008-2012

Occupation	Estimate	Percent
Civilian population age 16 years and over	10,224	100.0%
Management, professional, and related occupations	5,218	51.0%
Service occupations	1,251	12.2%
Sales and office occupations	2,687	26.3%
Farming, fishing, and forestry occupations	0	0.0%
Construction, extraction, maintenance, and repair occupations	355	3.5%
Production, transportation, and material moving occupations	713	7.0%

N. Class of Worker, 2008-2012

Occupation	Estimate	Percent
Civilian population age 16 years and over	10,224	100.0%
Private, for profit, wage and salary employee	6,188	60.5%
Private, not for profit, wage and salary employee	2,063	20.2%
Private, for profit, wage and salary self-employed in own business	371	3.6%
Government workers	957	9.4%
Self-employed in own not incorporated business	638	6.2%
Unpaid family workers in family business	7	0.1%