

Demographic Profile California Area Public Library

Population Growth: The total population of the California Area Public Library service area increased by 10.5 percent over the past decade to 10,640; this growth rate was higher than the statewide rate of 3.4 percent.

Age and Sex: In 2010, the California Area Public Library service area had a total population of 10,640 - 5,152 males (48.4 percent) and 5,488 females (51.6 percent). The age structure of the population in 2010 was as follows: 25.3 percent of the population was under 20 years old, 61.0 percent was 20 to 64 years old and 13.7 percent was 65 years or older.

Race and Ethnicity: For people reporting one race alone, not of Hispanic ethnicity, 92.2 percent were White; 4.9 percent were Black or African American; 1.8 percent were Other Race Alone.¹ A total of 115 or 1.1 percent of the population were Hispanic.²

Households: In 2010, there were 3,714 households in the California Area Public Library service area. The average household size was 2.27 people. Families made up 49.1 percent of the households. This figure includes both families with (15.6 percent) and without (33.4 percent) children. Of families with children less than 18 years old, 10.7 percent were married-couple families, 3.2 percent were female householder families with no husband present, and the remaining (1.7 percent) were male-headed households with no wife present.

Education: The educational attainment of the population 25 years and over was higher in the California Area Public Library service area than in Pennsylvania. During the period 2008-2012, 29.5 percent of residents had earned a Bachelor's degree or higher, compared with 27.0 percent statewide. A total of 772 or 12.8 percent had not completed high school, compared with 11.7 percent for the commonwealth as a whole.

Income and Poverty: Households with incomes of less than \$25,000 (35.5 percent) made up the largest percent of households in the California Area Public Library service area in 2008-2012. For comparison, 23.6 percent of commonwealth households were in this range during the period.

In 2008-2012, the overall poverty rate for the California Area Public Library service area was higher than Pennsylvania (24.6 percent compared to 13.1 percent). The poverty rate for the population under 18 years of age was 17.2 percent, compared with 29.8 percent of people 18 to 64 years and 10.4 percent for those aged 65 years and over. A total of 208 or 9.4 percent of all families had incomes below poverty level. In 2008-2012, 11.7 percent of families with related children and 29.1 percent of families with a female householder and no husband with related children present had incomes below the poverty level.

Class of Worker and Occupation: In 2008-2012, 78.7 percent of the workforce was private wage and salary workers; 17.9 percent were federal, state, or local government workers; and 3.4 percent were self-employed in their own (not incorporated) business.

The top occupation group for the civilian employed population 16 years and over in the California Area Public Library service area in 2008-2012 was Management, business, science, and arts (31.5 percent).

¹ Other race includes those who identified themselves as American Indian/Alaska Native, Asian, Native Hawaiian/Other Pacific Islander, Some Other Race and Two or More Races on the 2010 Census form.

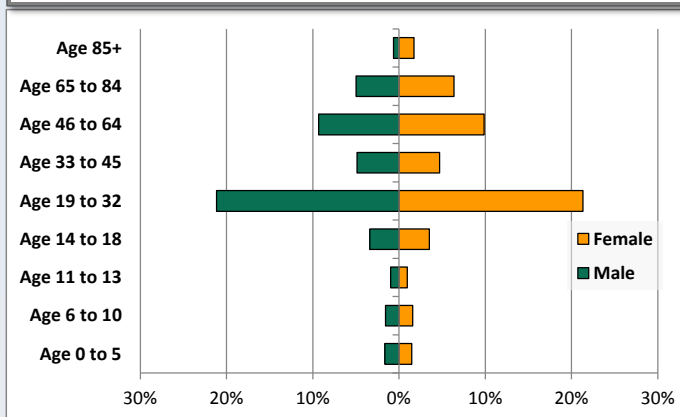
² People of Hispanic origin may be of any race.

Demographic Profile

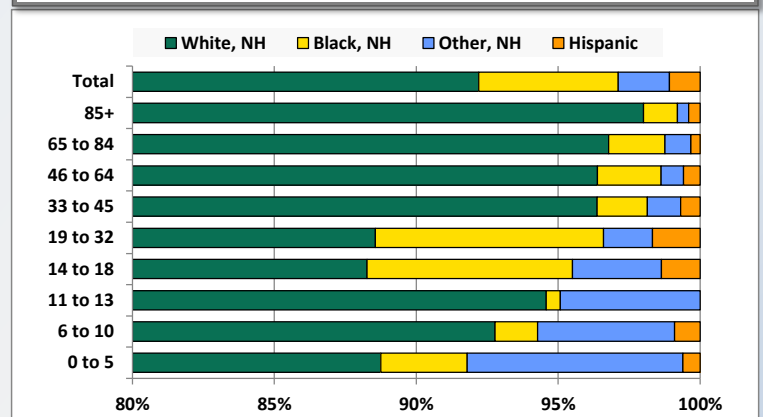
California Area Public Library

Key Indicators		
	2000	2010
Population Growth		
Total Population	9,631	10,640
10-Year Growth	N/A	10.5%
Diversity		
White Alone, Non-Hispanic	94.7%	92.2%
Black Alone, Non-Hispanic	3.2%	4.9%
Other Race Alone, Non-Hispanic	1.6%	1.8%
Percent Hispanic	0.5%	1.1%
Aging		
Percent 65 Years and Over	16.8%	13.7%
Households		
Percent Married Couple with Own Children	14.8%	10.7%
Percent Living Alone	32.0%	31.3%

Population by Library-Defined Age Group, 2010



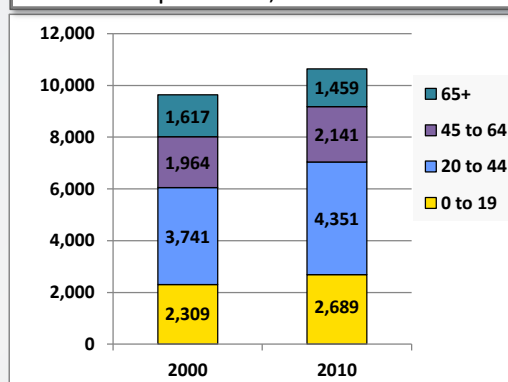
Race/Ethnicity by Library-Defined Age Group, 2010



Population Growth by Library-Defined Age Group, 2000 to 2010

Age Group	2010	Change	
		Numeric	Percent
Total	10,640	1,009	10.5%
85+	250	58	30.2%
65 to 84	1,209	-216	-15.2%
46 to 64	2,043	214	11.7%
33 to 45	1,021	-424	-29.3%
19 to 32	4,520	1,502	49.8%
14 to 18	733	109	17.5%
11 to 13	203	-58	-22.2%
6 to 10	332	-59	-15.1%
0 to 5	329	-117	-26.2%

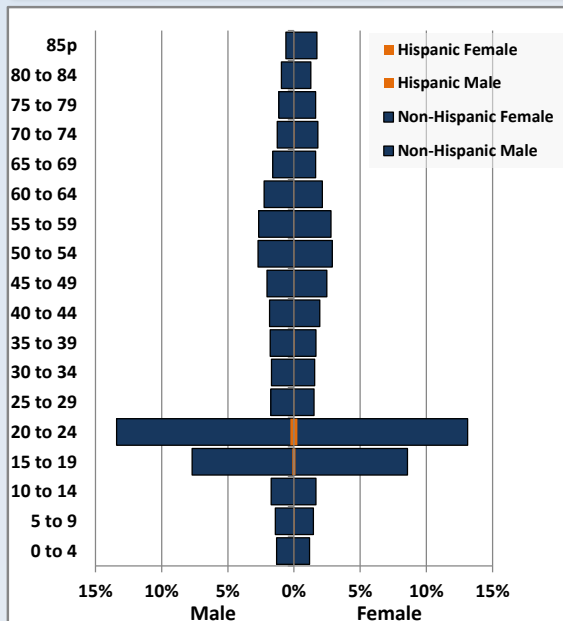
Population Total, 2000 and 2010



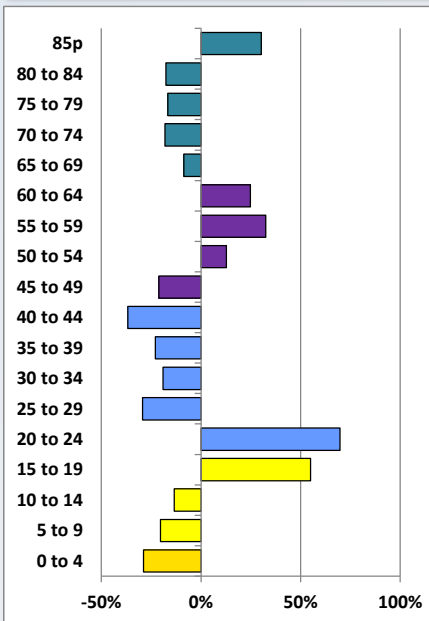
Demographic Profile

California Area Public Library

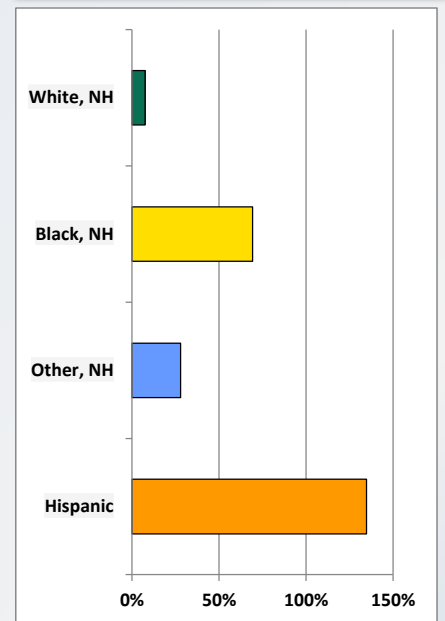
Population by 5-Year Age Cohorts



Pop Change by Age, 2000 to 2010

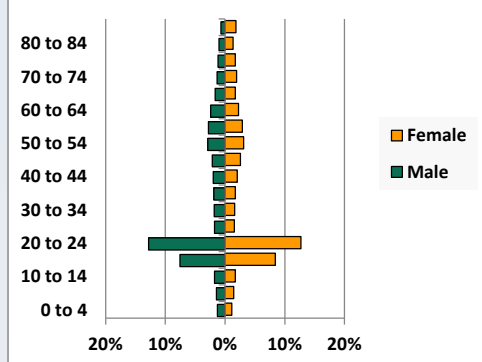


Pop Change by Race/Ethnicity, 2000 to 2010

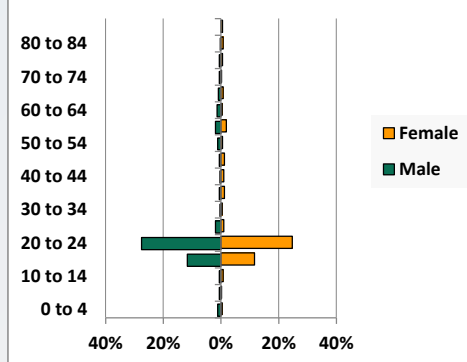


Population by Age, Race and Ethnicity 2010

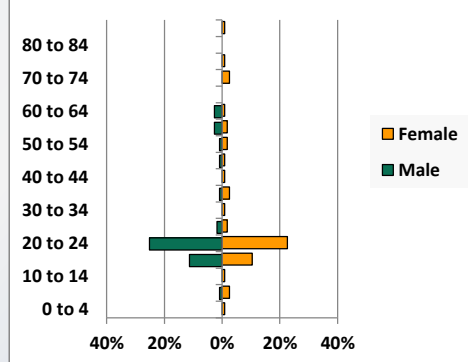
White, Not Hispanic



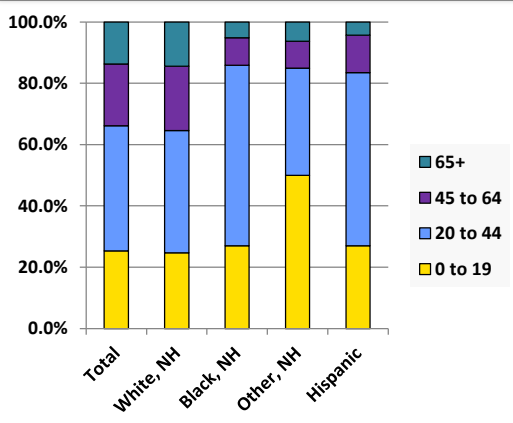
Black, Non-Hispanic



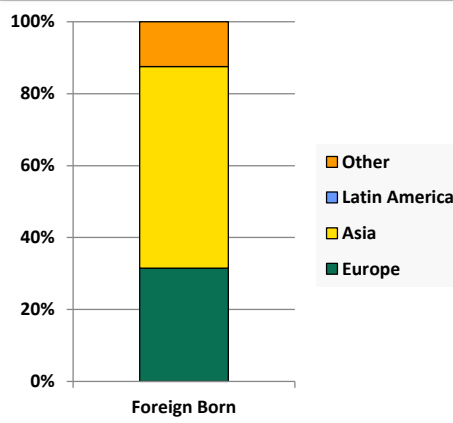
Hispanic



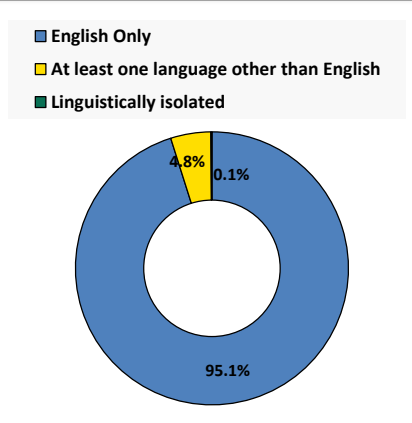
Age by Race and Ethnicity, 2010



Foreign Born, 2010



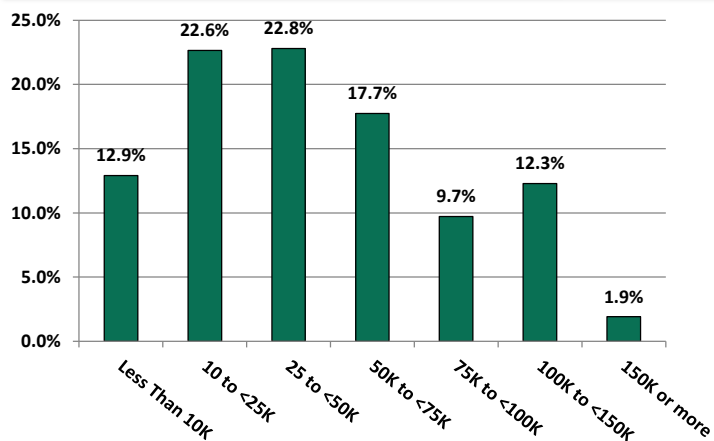
Household Language, 2010



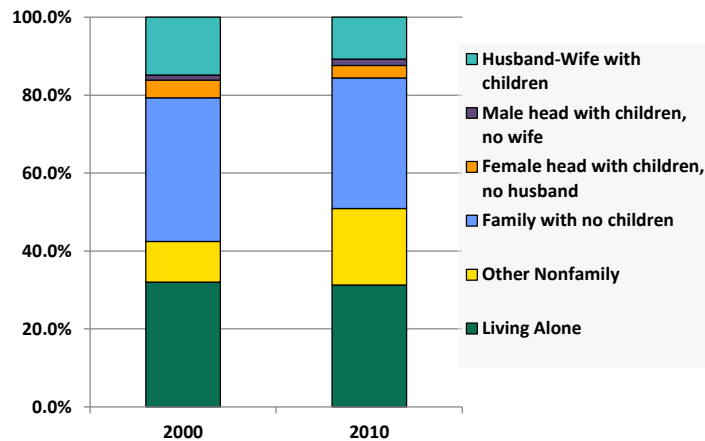
Demographic Profile

California Area Public Library

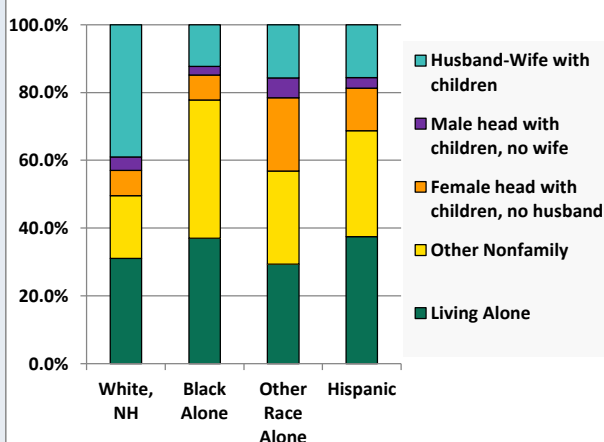
Household Income Distribution, 2008-2012



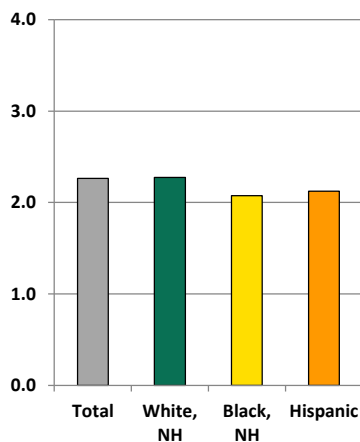
Household Type, 2000 and 2010



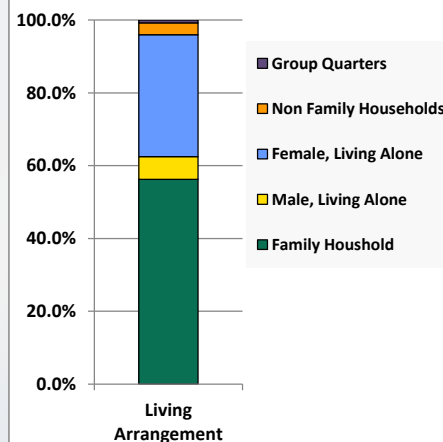
Household Type by Race/Ethnicity, 2010



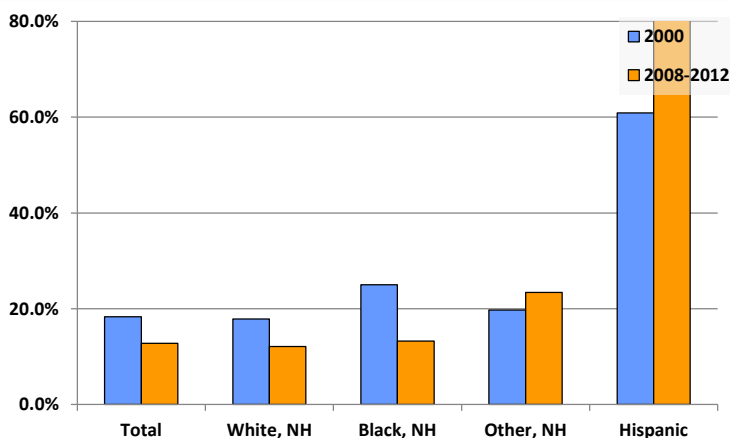
Average Household Size, 2010



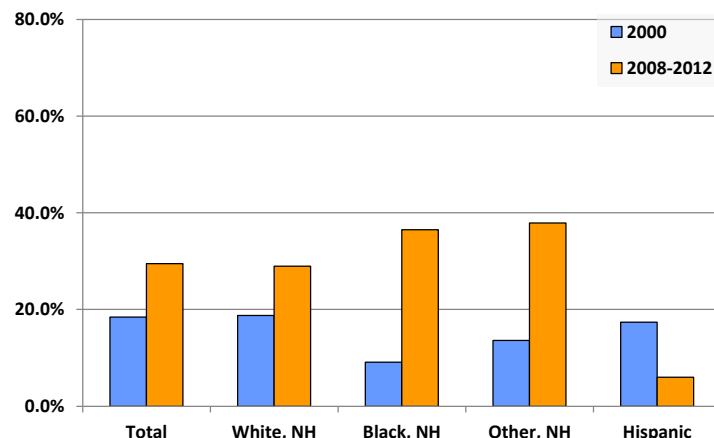
Living Arrangements 65+, 2008-2012



Percent of Adults that Did Not Complete High School



Percent of Adults Who Attained a Bachelor's Degree or Higher



Reference Data

California Area Public Library

	Total Population	White, Non- Hispanic	Black, Non- Hispanic	Other, Non- Hispanic	Detail for Other, Non-Hispanic					Hispanic or Latino
					AIAN	Asian	NHOPI	Some Other Race	Two or More Races	
A. Total Population										
2000 Total	9,631	9,123	309	150	14	50	1	9	76	49
2000 pct of Total	100.0%	94.7%	3.2%	1.6%	0.1%	0.5%	0.0%	0.1%	0.8%	0.5%
2010 Total	10,640	9,810	523	192	22	37	0	8	125	115
2010 pct of Total	100.0%	92.2%	4.9%	1.8%	0.2%	0.3%	0.0%	0.1%	1.2%	1.1%
B. Population by Major Age Groups by Race and Ethnicity										
2000										
0-19	2,309	2,150	90	58	4	15	0	4	35	11
20-64	5,705	5,393	198	82	10	33	0	4	35	32
65+	1,617	1,580	21	10	0	2	1	1	6	6
85+	192	190	0	2	0	1	1	0	0	0
2010										
0-19	2,689	2,421	141	96	6	11	0	3	76	31
20-64	6,492	5,974	355	84	14	23	0	5	42	79
65+	1,459	1,415	27	12	2	3	0	0	7	5
85+	250	245	3	1	0	0	0	0	1	1
C. Age Mix for Each Racial and Ethnic Group										
2000										
0-19	24.0%	23.6%	29.1%	38.7%	28.6%	30.0%	0.0%	44.4%	46.1%	22.4%
20-64	59.2%	59.1%	64.1%	54.7%	71.4%	66.0%	0.0%	44.4%	46.1%	65.3%
65+	16.8%	17.3%	6.8%	6.7%	0.0%	4.0%	100.0%	11.1%	7.9%	12.2%
85+	2.0%	2.1%	0.0%	1.3%	0.0%	2.0%	100.0%	0.0%	0.0%	0.0%
2010										
0-19	25.3%	24.7%	27.0%	50.0%	27.3%	29.7%	0.0%	37.5%	60.8%	27.0%
20-64	61.0%	60.9%	67.9%	43.8%	63.6%	62.2%	0.0%	62.5%	33.6%	68.7%
65+	13.7%	14.4%	5.2%	6.3%	9.1%	8.1%	0.0%	0.0%	5.6%	4.3%
85+	2.3%	2.5%	0.6%	0.5%	0.0%	0.0%	0.0%	0.0%	0.8%	0.9%
D. Racial and Ethnic Composition of Each Age Group										
2000										
0-19	100.0%	93.1%	3.9%	2.5%	0.2%	0.6%	0.0%	0.2%	1.5%	0.5%
20-64	100.0%	94.5%	3.5%	1.4%	0.2%	0.6%	0.0%	0.1%	0.6%	0.6%
65+	100.0%	97.7%	1.3%	0.6%	0.0%	0.1%	0.1%	0.1%	0.4%	0.4%
85+	100.0%	99.0%	0.0%	1.0%	0.0%	0.5%	0.5%	0.0%	0.0%	0.0%
2010										
0-19	100.0%	90.0%	5.2%	3.6%	0.2%	0.4%	0.0%	0.1%	2.8%	1.2%
20-64	100.0%	92.0%	5.5%	1.3%	0.2%	0.4%	0.0%	0.1%	0.6%	1.2%
65+	100.0%	97.0%	1.9%	0.8%	0.1%	0.2%	0.0%	0.0%	0.5%	0.3%
85+	100.0%	98.0%	1.2%	0.4%	0.0%	0.0%	0.0%	0.0%	0.4%	0.4%
E. Population Growth										
2000-2010, Change										
0-19	380	271	51	38	2	-4	0	-1	41	20
20-64	787	581	157	2	4	-10	0	1	7	47
65+	-158	-165	6	2	2	1	-1	-1	1	-1
85+	58	55	3	-1	0	-1	-1	0	1	1
Total	1,009	687	214	42	8	-13	-1	-1	49	66
2000-2010, Pct Change										
0-19	16.5%	12.6%	56.7%	65.5%	50.0%	-26.7%	0.0%	-25.0%	117.1%	181.8%
20-64	13.8%	10.8%	79.3%	2.4%	40.0%	-30.3%	0.0%	25.0%	20.0%	146.9%
65+	-9.8%	-10.4%	28.6%	20.0%	0.0%	50.0%	-100.0%	-100.0%	16.7%	-16.7%
85+	30.2%	28.9%	0.0%	-50.0%	0.0%	-100.0%	-100.0%	0.0%	0.0%	0.0%
Total	10.5%	7.5%	69.3%	28.0%	57.1%	-26.0%	-100.0%	-11.1%	64.5%	134.7%

Source: Decennial Census 2010, 2000, American Community Survey 2008-2012

Prepared for the Pennsylvania State Library by The Pennsylvania State Data Center, 9/2014

Reference Data

California Area Public Library

					Detail for Other, Non-Hispanic					Hispanic or Latino
	Total Population	White, Non-Hispanic	Black, Non-Hispanic	Other, Non-Hispanic	AIAN	Asian	NHOPI	Some Other	Two or More	
								Race	Races	
F. Population by Library-Defined Age Groups, 2010										
0-5	329	292	10	25	2	1	0	0	22	2
6-10	332	308	5	16	1	1	0	1	13	3
11-13	203	192	1	10	0	0	0	1	9	0
14-18	733	647	53	23	2	5	0	0	16	10
19-32	4,520	4,003	363	78	5	19	0	5	49	76
33-45	1,021	984	18	12	4	2	0	1	5	7
46-64	2,043	1,969	46	16	6	6	0	0	4	12
65-84	1,209	1,170	24	11	2	3	0	0	6	4
85+	250	245	3	1	0	0	0	0	1	1
Total	10,640	9,810	523	192	22	37	0	8	125	115
G. Population by 5-Year Age Cohorts, 2010										
0-4	264	236	8	19	2	1	0	0	16	1
5-9	310	284	4	18	1	0	0	1	16	4
10-14	361	338	7	15	0	1	0	1	13	1
15-19	1,754	1,563	122	44	3	9	0	1	31	25
20-24	2,877	2,501	273	48	2	14	0	3	29	55
25-29	350	325	15	6	1	0	0	1	4	4
30-34	347	337	4	5	1	2	0	1	1	1
35-39	372	353	9	6	2	1	0	0	3	4
40-44	405	395	7	2	1	0	0	0	1	1
45-49	482	464	9	7	4	1	0	0	2	2
50-54	600	584	9	4	2	1	0	0	1	3
55-59	587	558	20	4	1	2	0	0	1	5
60-64	472	457	9	2	0	2	0	0	0	4
65-69	347	333	9	5	1	2	0	0	2	0
70-74	329	320	4	2	0	1	0	0	1	3
75-79	295	286	6	2	1	0	0	0	1	1
80-84	238	231	5	2	0	0	0	0	2	0
85-89	168	165	2	0	0	0	0	0	0	1
90-94	60	58	1	1	0	0	0	0	1	0
95-99	19	19	0	0	0	0	0	0	0	0
100+	3	3	0	0	0	0	0	0	0	0
Total	10,640	9,810	523	192	22	37	0	8	125	115

Source: Decennial Census 2010, 2000, American Community Survey 2008-2012

Prepared for the Pennsylvania State Library by The Pennsylvania State Data Center, 9/2014

Reference Data

California Area Public Library

H. Income Distribution, 2008-2012

Range (in thousands)	Households	Pct of Total
<\$10K	526	12.9%
\$10K to <\$25K	923	22.6%
\$25K to <\$50K	929	22.8%
\$50K to <\$75K	723	17.7%
\$75K to <\$100K	396	9.7%
\$100K to <\$150K	501	12.3%
\$150K+	78	1.9%

I. Household Type, 2010

Household Type	2000	2000pct	2010	2010pct
Total Households	3,711	100.0%	3,714	100.0%
Family Households	2,134	57.5%	1,822	49.1%
Husband-wife, no children w/children	550	14.8%	398	10.7%
Female head, no husband, w/ children	170	4.6%	119	3.2%
Male head, no wife, w/ children	49	1.3%	63	1.7%
Without children	1,365	36.8%	1,242	33.4%
Nonfamily households	1,577	42.5%	1,892	50.9%
Living alone	1,188	32.0%	1,161	31.3%
Other nonfamily	389	10.5%	731	19.7%

J. Household Type by Race and Ethnicity, 2008-2012

Household Type	White, NH	Black, NH	Other, NH	Hispanic
Total Households	3,480	162	51	32
Husband wife family	39.1%	12.3%	15.7%	15.6%
Family with male head, no wife	3.9%	2.5%	5.9%	3.1%
family with female head, no husband	7.5%	7.4%	21.6%	12.5%
Living alone	31.0%	37.0%	29.4%	37.5%
Other nonfamily	18.5%	40.7%	27.5%	31.3%

K. Poverty, 2008-2012

Families	Poverty	PA
All families	9.4%	9.1%
Families w/ related children	11.7%	15.3%
Female householder, no husband present	35.5%	28.8%
Female householder, no husband present, w/ related children	29.1%	39.2%
All people	24.6%	13.1%
Under 18 years	17.2%	18.4%
18 to 64 years	29.8%	12.3%
65 years and over	10.4%	8.4%

L. Educational Attainment by Race and Ethnicity, 2008-2012

Education Level	White, NH	Black	Other	Hispanic	Total
Population 25 years and over	5,560	211	235	50	6,028
Less than high school	12.1%	13.3%	23%	88.0%	12.8%
High school graduate (includes equivalency)	39.8%	47.9%	12%	6.0%	38.9%
Some college or associates degree	19.2%	2.4%	26%	0.0%	18.8%
Bachelors degree or higher	28.9%	36.5%	38%	6.0%	29.5%

M. Occupation, 2008-2012

Occupation	Estimate	Percent
Civilian population age 16 years and over	5,294	100.0%
Management, professional, and related occupations	1,665	31.5%
Service occupations	1,399	26.4%
Sales and office occupations	1,266	23.9%
Farming, fishing, and forestry occupations	2	0.0%
Construction, extraction, maintenance, and repair occupations	447	8.4%
Production, transportation, and material moving occupations	515	9.7%

N. Class of Worker, 2008-2012

Occupation	Estimate	Percent
Civilian population age 16 years and over	5,294	100.0%
Private, for profit, wage and salary employee	3,130	59.1%
Private, not for profit, wage and salary employee	1,007	19.0%
Private, for profit, wage and salary self-employed in own business	29	0.5%
Government workers	945	17.9%
Self-employed in own not incorporated business	180	3.4%
Unpaid family workers in family business	3	0.1%