

Demographic Profile Community Library of Lake & Salem Townships

Population Growth: The total population of the Community Library of Lake & Salem Townships service area increased by 18.9 percent over the past decade to 9,540; this growth rate was higher than the statewide rate of 3.4 percent.

Age and Sex: In 2010, the Community Library of Lake & Salem Townships service area had a total population of 9,540 - 4,750 males (49.8 percent) and 4,790 females (50.2 percent). The age structure of the population in 2010 was as follows: 21.2 percent of the population was under 20 years old, 56.8 percent was 20 to 64 years old and 22.0 percent was 65 years or older.

Race and Ethnicity: For people reporting one race alone, not of Hispanic ethnicity, 94.0 percent were White; 1.3 percent were Black or African American; 1.6 percent were Other Race Alone.¹ A total of 297 or 3.1 percent of the population were Hispanic.²

Households: In 2010, there were 3,926 households in the Community Library of Lake & Salem Townships service area. The average household size was 2.39 people. Families made up 70.0 percent of the households. This figure includes both families with (21.5 percent) and without (48.5 percent) children. Of families with children less than 18 years old, 16.4 percent were married-couple families, 3.4 percent were female householder families with no husband present, and the remaining (1.7 percent) were male-headed households with no wife present.

Education: The educational attainment of the population 25 years and over was lower in the Community Library of Lake & Salem Townships service area than in Pennsylvania. During the period 2008-2012, 25.0 percent of residents had earned a Bachelor's degree or higher, compared with 27.0 percent statewide. A total of 677 or 9.5 percent had not completed high school, compared with 11.7 percent for the commonwealth as a whole.

Income and Poverty: Households with incomes of \$50,000 to \$74,999 (28.5 percent) made up the largest percent of households in the Community Library of Lake & Salem Townships service area in 2008-2012. For comparison, 18.7 percent of commonwealth households were in this range during the period.

In 2008-2012, the overall poverty rate for the Community Library of Lake & Salem Townships service area was lower than Pennsylvania (8.7 percent compared to 13.1 percent). The poverty rate for the population under 18 years of age was 8.8 percent, compared with 10.0 percent of people 18 to 64 years and 4.6 percent for those aged 65 years and over. A total of 116 or 4.7 percent of all families had incomes below poverty level. In 2008-2012, 8.8 percent of families with related children and 42.6 percent of families with a female householder and no husband with related children present had incomes below the poverty level.

Class of Worker and Occupation: In 2008-2012, 75.8 percent of the workforce was private wage and salary workers; 12.7 percent were federal, state, or local government workers; and 11.3 percent were self-employed in their own (not incorporated) business.

The top occupation group for the civilian employed population 16 years and over in the Community Library of Lake & Salem Townships service area in 2008-2012 was Management, business, science, and arts (27.6 percent).

¹ Other race includes those who identified themselves as American Indian/Alaska Native, Asian, Native Hawaiian/Other Pacific Islander, Some Other Race and Two or More Races on the 2010 Census form.

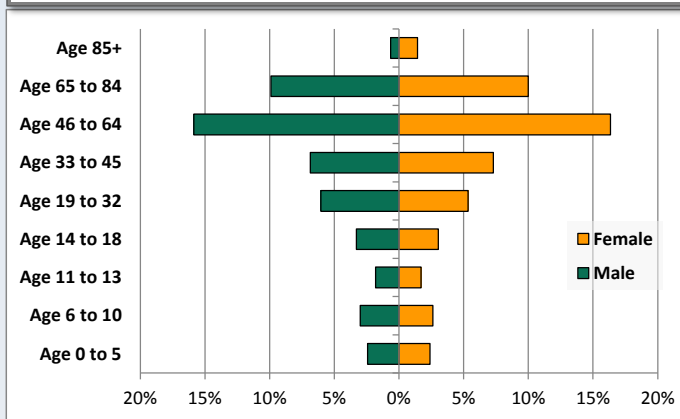
² People of Hispanic origin may be of any race.

Demographic Profile

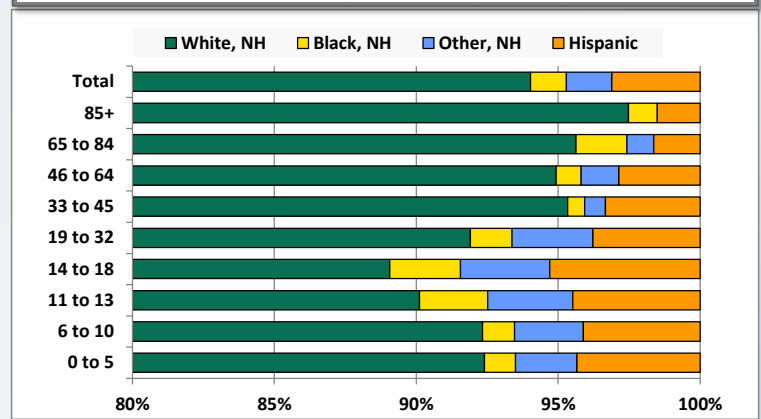
Community Library of Lake & Salem Townships

Key Indicators		
	2000	2010
Population Growth		
Total Population	8,025	9,540
10-Year Growth	N/A	18.9%
Diversity		
White Alone, Non-Hispanic	96.1%	94.0%
Black Alone, Non-Hispanic	1.2%	1.3%
Other Race Alone, Non-Hispanic	1.2%	1.6%
Percent Hispanic	1.5%	3.1%
Aging		
Percent 65 Years and Over	16.9%	22.0%
Households		
Percent Married Couple with Own Children	23.9%	16.4%
Percent Living Alone	20.7%	24.7%

Population by Library-Defined Age Group, 2010



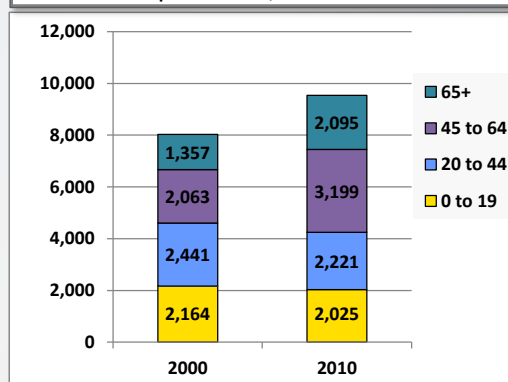
Race/Ethnicity by Library-Defined Age Group, 2010



Population Growth by Library-Defined Age Group, 2000 to 2010

Age Group	2010	Change	
		Numeric	Percent
Total	9,540	1,515	18.9%
85+	198	37	23.0%
65 to 84	1,897	701	58.6%
46 to 64	3,073	1,145	59.4%
33 to 45	1,351	-208	-13.3%
19 to 32	1,087	-10	-0.9%
14 to 18	604	25	4.3%
11 to 13	334	0	0.0%
6 to 10	535	-58	-9.8%
0 to 5	461	-117	-20.2%

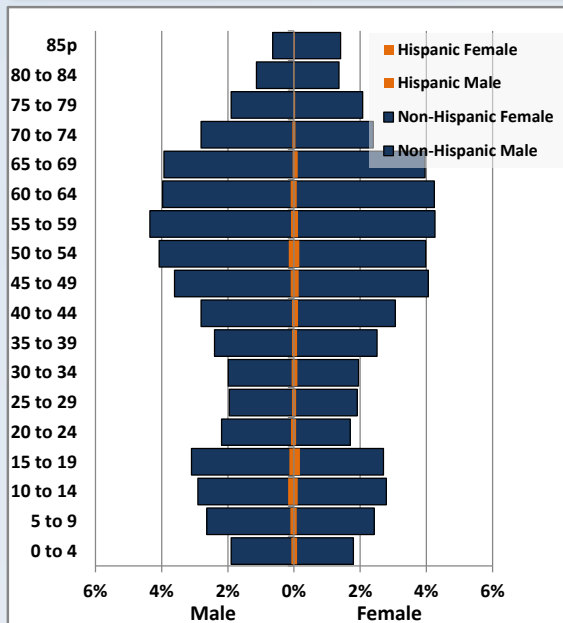
Population Total, 2000 and 2010



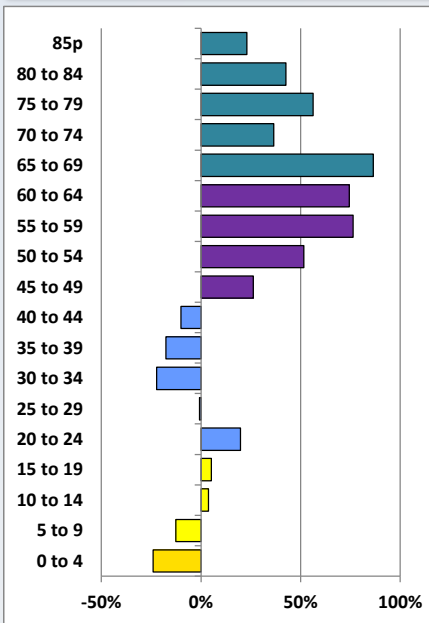
Demographic Profile

Community Library of Lake & Salem Townships

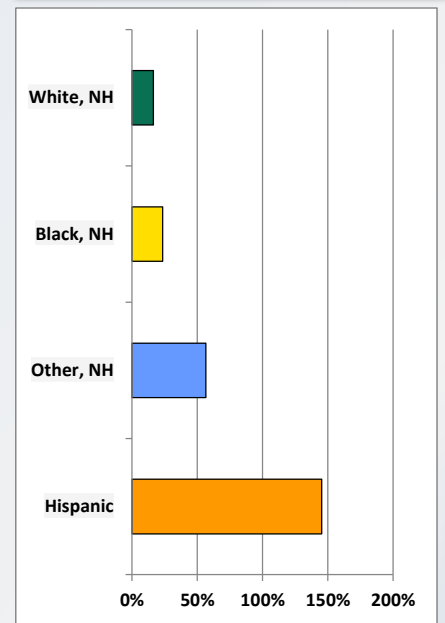
Population by 5-Year Age Cohorts



Pop Change by Age, 2000 to 2010

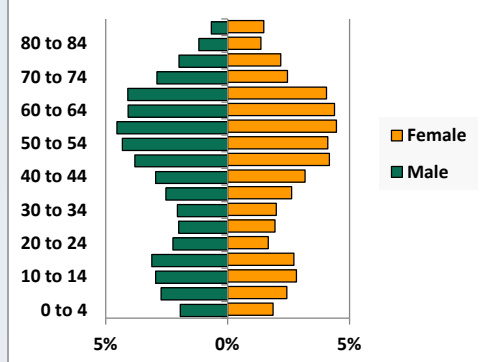


Pop Change by Race/Ethnicity, 2000 to 2010

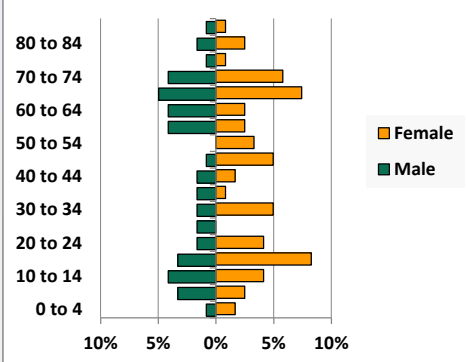


Population by Age, Race and Ethnicity 2010

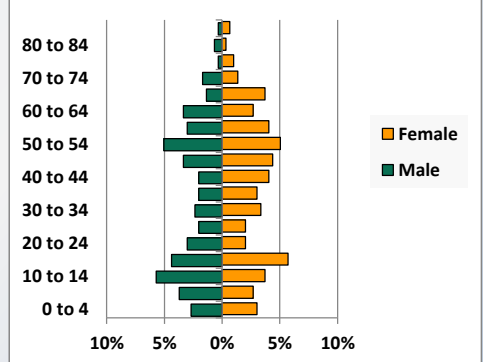
White, Not Hispanic



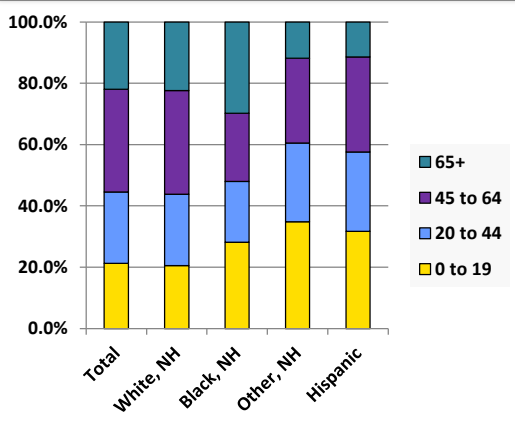
Black, Non-Hispanic



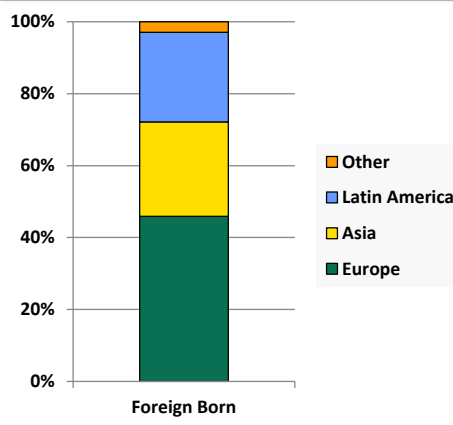
Hispanic



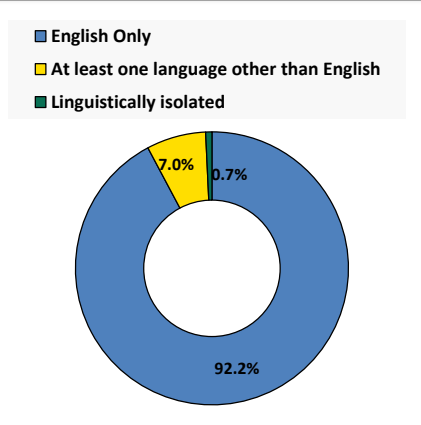
Age by Race and Ethnicity, 2010



Foreign Born, 2010



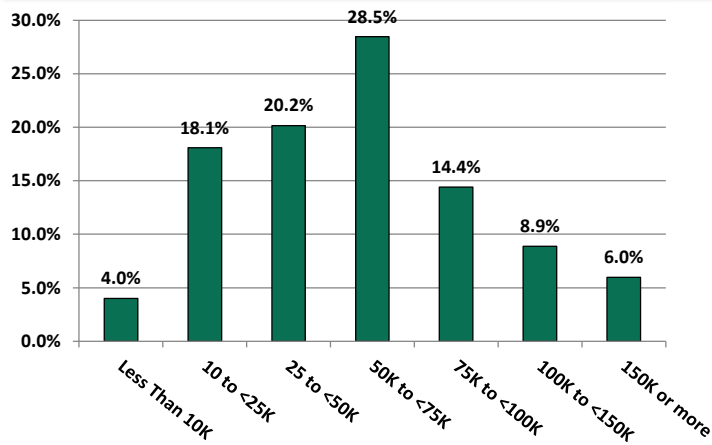
Household Language, 2010



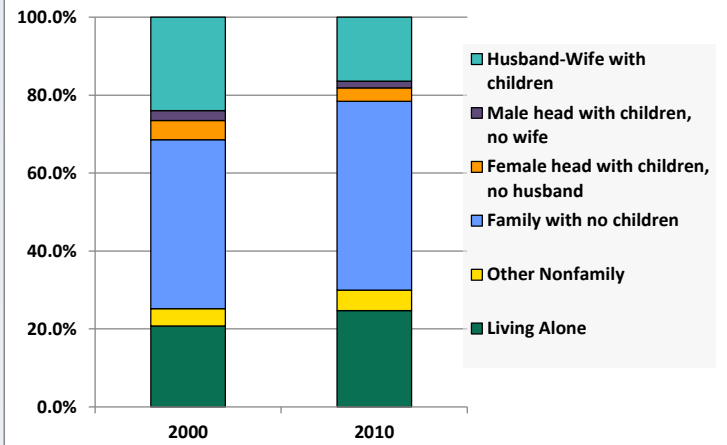
Demographic Profile

Community Library of Lake & Salem Townships

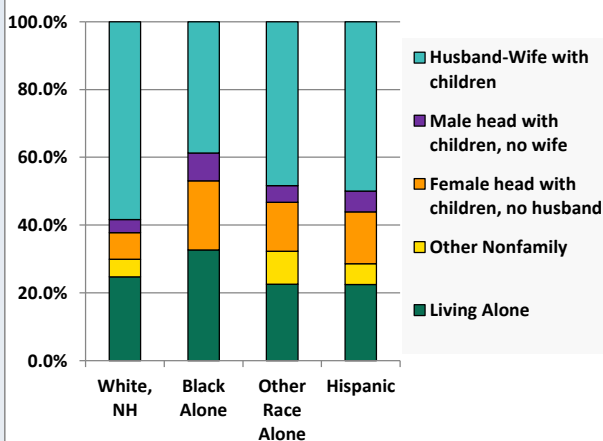
Household Income Distribution, 2008-2012



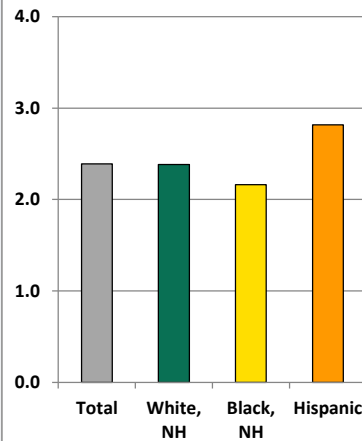
Household Type, 2000 and 2010



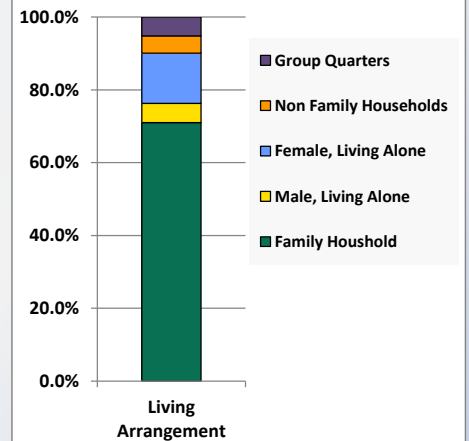
Household Type by Race/Ethnicity, 2010



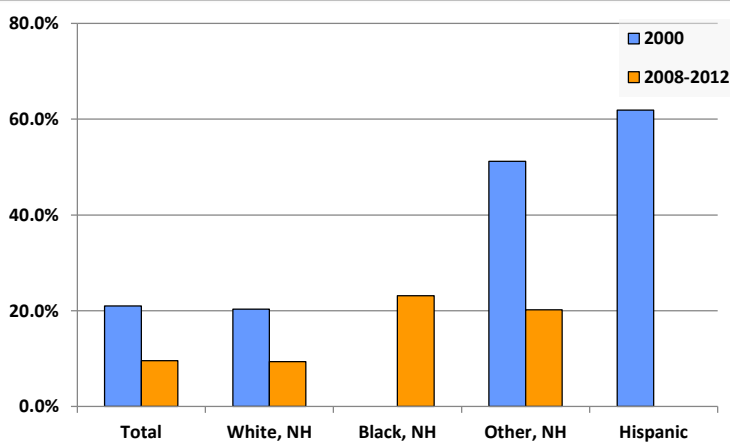
Average Household Size, 2010



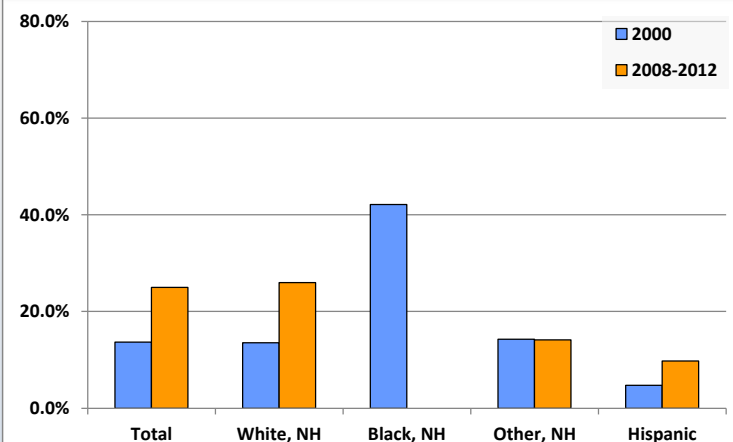
Living Arrangements 65+, 2008-2012



Percent of Adults that Did Not Complete High School



Percent of Adults Who Attained a Bachelor's Degree or Higher



Reference Data

Community Library of Lake & Salem Townships

	Total Population	White, Non- Hispanic	Black, Non- Hispanic	Other, Non- Hispanic	Detail for Other, Non-Hispanic					Hispanic or Latino
					AIAN	Asian	NHOPI	Some Other Race	Two or More Races	
A. Total Population										
2000 Total	8,025	7,709	98	97	11	15	0	4	67	121
2000 pct of Total	100.0%	96.1%	1.2%	1.2%	0.1%	0.2%	0.0%	0.0%	0.8%	1.5%
2010 Total	9,540	8,970	121	152	10	42	1	5	94	297
2010 pct of Total	100.0%	94.0%	1.3%	1.6%	0.1%	0.4%	0.0%	0.1%	1.0%	3.1%
B. Population by Major Age Groups by Race and Ethnicity										
2000										
0-19	2,164	2,032	46	35	3	3	0	4	25	51
20-64	4,504	4,353	44	48	6	10	0	0	32	59
65+	1,357	1,324	8	14	2	2	0	0	10	11
85+	161	156	2	1	0	0	0	0	1	2
2010										
0-19	2,025	1,844	34	53	1	5	0	1	46	94
20-64	5,420	5,119	51	81	8	31	1	4	37	169
65+	2,095	2,007	36	18	1	6	0	0	11	34
85+	198	193	2	0	0	0	0	0	0	3
C. Age Mix for Each Racial and Ethnic Group										
2000										
0-19	27.0%	26.4%	46.9%	36.1%	27.3%	20.0%	0.0%	100.0%	37.3%	42.1%
20-64	56.1%	56.5%	44.9%	49.5%	54.5%	66.7%	0.0%	0.0%	47.8%	48.8%
65+	16.9%	17.2%	8.2%	14.4%	18.2%	13.3%	0.0%	0.0%	14.9%	9.1%
85+	2.0%	2.0%	2.0%	1.0%	0.0%	0.0%	0.0%	0.0%	1.5%	1.7%
2010										
0-19	21.2%	20.6%	28.1%	34.9%	10.0%	11.9%	0.0%	20.0%	48.9%	31.6%
20-64	56.8%	57.1%	42.1%	53.3%	80.0%	73.8%	100.0%	80.0%	39.4%	56.9%
65+	22.0%	22.4%	29.8%	11.8%	10.0%	14.3%	0.0%	0.0%	11.7%	11.4%
85+	2.1%	2.2%	1.7%	0.0%	0.0%	0.0%	0.0%	0.0%	0.0%	1.0%
D. Racial and Ethnic Composition of Each Age Group										
2000										
0-19	100.0%	93.9%	2.1%	1.6%	0.1%	0.1%	0.0%	0.2%	1.2%	2.4%
20-64	100.0%	96.6%	1.0%	1.1%	0.1%	0.2%	0.0%	0.0%	0.7%	1.3%
65+	100.0%	97.6%	0.6%	1.0%	0.1%	0.1%	0.0%	0.0%	0.7%	0.8%
85+	100.0%	96.9%	1.2%	0.6%	0.0%	0.0%	0.0%	0.0%	0.6%	1.2%
2010										
0-19	100.0%	91.1%	1.7%	2.6%	0.0%	0.2%	0.0%	0.0%	2.3%	4.6%
20-64	100.0%	94.4%	0.9%	1.5%	0.1%	0.6%	0.0%	0.1%	0.7%	3.1%
65+	100.0%	95.8%	1.7%	0.9%	0.0%	0.3%	0.0%	0.0%	0.5%	1.6%
85+	100.0%	97.5%	1.0%	0.0%	0.0%	0.0%	0.0%	0.0%	0.0%	1.5%
E. Population Growth										
2000-2010, Change										
0-19	-139	-188	-12	18	-2	2	0	-3	21	43
20-64	916	766	7	33	2	21	1	4	5	110
65+	738	683	28	4	-1	4	0	0	1	23
85+	37	37	0	-1	0	0	0	0	-1	1
Total	1,515	1,261	23	55	-1	27	1	1	27	176
2000-2010, Pct Change										
0-19	-6.4%	-9.3%	-26.1%	51.4%	-66.7%	66.7%	0.0%	-75.0%	84.0%	84.3%
20-64	20.3%	17.6%	15.9%	68.8%	33.3%	210.0%	0.0%	0.0%	15.6%	186.4%
65+	54.4%	51.6%	350.0%	28.6%	-50.0%	200.0%	0.0%	0.0%	10.0%	209.1%
85+	23.0%	23.7%	0.0%	-100.0%	0.0%	0.0%	0.0%	0.0%	-100.0%	50.0%
Total	18.9%	16.4%	23.5%	56.7%	-9.1%	180.0%	0.0%	25.0%	40.3%	145.5%

Source: Decennial Census 2010, 2000, American Community Survey 2008-2012

Prepared for the Pennsylvania State Library by The Pennsylvania State Data Center, 9/2014

Reference Data

Community Library of Lake & Salem Townships

	Total Population	White, Non- Hispanic	Black, Non- Hispanic	Other, Non- Hispanic	Detail for Other, Non-Hispanic					Hispanic or Latino
					AIAN	Asian	NHOPI	Some Other	Two or More	
								Race	Races	
F. Population by Library-Defined Age Groups, 2010										
0-5	461	426	5	10	0	0	0	0	10	20
6-10	535	494	6	13	0	0	0	0	13	22
11-13	334	301	8	10	0	3	0	0	7	15
14-18	604	538	15	19	1	2	0	1	15	32
19-32	1,087	999	16	31	3	7	0	2	19	41
33-45	1,351	1,288	8	10	1	5	0	0	4	45
46-64	3,073	2,917	27	41	4	19	1	2	15	88
65-84	1,897	1,814	34	18	1	6	0	0	11	31
85+	198	193	2	0	0	0	0	0	0	3
Total	9,540	8,970	121	152	10	42	1	5	94	297
G. Population by 5-Year Age Cohorts, 2010										
0-4	369	341	3	8	0	0	0	0	8	17
5-9	501	462	7	13	0	0	0	0	13	19
10-14	571	518	10	15	0	3	0	0	12	28
15-19	584	523	14	17	1	2	0	1	13	30
20-24	386	351	7	13	1	6	0	0	6	15
25-29	381	355	2	12	2	1	0	1	8	12
30-34	393	363	8	5	0	0	0	1	4	17
35-39	483	463	3	2	0	2	0	0	0	15
40-44	578	549	4	7	1	3	0	0	3	18
45-49	755	716	7	9	1	4	0	0	4	23
50-54	799	756	4	9	1	4	0	0	4	30
55-59	843	807	8	7	0	3	1	2	1	21
60-64	802	759	8	17	2	8	0	0	7	18
65-69	768	731	15	7	0	2	0	0	5	15
70-74	505	480	12	4	0	1	0	0	3	9
75-79	383	375	2	2	0	1	0	0	1	4
80-84	241	228	5	5	1	2	0	0	2	3
85-89	140	136	1	0	0	0	0	0	0	3
90-94	44	44	0	0	0	0	0	0	0	0
95-99	13	12	1	0	0	0	0	0	0	0
100+	1	1	0	0	0	0	0	0	0	0
Total	9,540	8,970	121	152	10	42	1	5	94	297

Source: Decennial Census 2010, 2000, American Community Survey 2008-2012

Prepared for the Pennsylvania State Library by The Pennsylvania State Data Center, 9/2014

Page 6

Reference Data

Community Library of Lake & Salem Townships

H. Income Distribution, 2008-2012

Range (in thousands)	Households	Pct of Total
<\$10K	141	4.0%
\$10K to <\$25K	635	18.1%
\$25K to <\$50K	708	20.2%
\$50K to <\$75K	999	28.5%
\$75K to <\$100K	506	14.4%
\$100K to <\$150K	312	8.9%
\$150K+	210	6.0%

I. Household Type, 2010

Household Type	2000	2000pct	2010	2010pct
Total Households	3,032	100.0%	3,926	100.0%
Family Households	2,267	74.8%	2,749	70.0%
Husband-wife, no children w/children	726	23.9%	644	16.4%
Female head, no husband, w/ children	148	4.9%	135	3.4%
Male head, no wife, w/ children	79	2.6%	67	1.7%
Without children	1,314	43.3%	1,903	48.5%
Nonfamily households	765	25.2%	1,177	30.0%
Living alone	629	20.7%	970	24.7%
Other nonfamily	136	4.5%	207	5.3%

J. Household Type by Race and Ethnicity, 2008-2012

Household Type	White, NH	Black, NH	Other, NH	Hispanic
Total Households	3,740	49	62	98
Husband wife family	58.4%	38.8%	48.4%	50.0%
Family with male head, no wife	3.9%	8.2%	4.8%	6.1%
family with female head, no husband	7.8%	20.4%	14.5%	15.3%
Living alone	24.7%	32.7%	22.6%	22.4%
Other nonfamily	5.2%	0.0%	9.7%	6.1%

K. Poverty, 2008-2012

Families	Poverty	PA
All families	4.7%	9.1%
Families w/ related children	8.8%	15.3%
Female householder, no husband present	32.1%	28.8%
Female householder, no husband present, w/ related children	42.6%	39.2%
All people	8.7%	13.1%
Under 18 years	8.8%	18.4%
18 to 64 years	10.0%	12.3%
65 years and over	4.6%	8.4%

L. Educational Attainment by Race and Ethnicity, 2008-2012

Education Level	White, NH	Black	Other	Hispanic	Total
Population 25 years and over	6,700	121	99	195	7,091
Less than high school	9.4%	23.1%	20%	0.0%	9.5%
High school graduate (includes equivalency	38.5%	0.0%	15%	56.4%	38.2%
Some college or associates degree	26.1%	76.9%	51%	33.8%	27.3%
Bachelors degree or higher	26.0%	0.0%	14%	9.7%	25.0%

M. Occupation, 2008-2012

Occupation	Estimate	Percent
Civilian population age 16 years and over	4,162	100.0%
Management, professional, and related occupations	1,149	27.6%
Service occupations	958	23.0%
Sales and office occupations	978	23.5%
Farming, fishing, and forestry occupations	19	0.5%
Construction, extraction, maintenance, and repair occupations	440	10.6%
Production, transportation, and material moving occupations	618	14.8%

N. Class of Worker, 2008-2012

Occupation	Estimate	Percent
Civilian population age 16 years and over	4,162	100.0%
Private, for profit, wage and salary employee	2,681	64.4%
Private, not for profit, wage and salary employee	311	7.5%
Private, for profit, wage and salary self-employed in own business	164	3.9%
Government workers	529	12.7%
Self-employed in own not incorporated business	471	11.3%
Unpaid family workers in family business	6	0.1%