

Demographic Profile Coplay Public Library

Population Growth: The total population of the Coplay Public Library service area decreased by -5.8 percent over the past decade to 3,192; this decline rate was lower than the statewide rate of 3.4 percent.

Age and Sex: In 2010, the Coplay Public Library service area had a total population of 3,192 - 1,476 males (46.2 percent) and 1,716 females (53.8 percent). The age structure of the population in 2010 was as follows: 20.3 percent of the population was under 20 years old, 60.8 percent was 20 to 64 years old and 19.0 percent was 65 years or older.

Race and Ethnicity: For people reporting one race alone, not of Hispanic ethnicity, 89.5 percent were White; 2.1 percent were Black or African American; 2.1 percent were Other Race Alone.¹ A total of 202 or 6.3 percent of the population were Hispanic.²

Households: In 2010, there were 1,422 households in the Coplay Public Library service area. The average household size was 2.24 people. Families made up 62.4 percent of the households. This figure includes both families with (21.5 percent) and without (40.9 percent) children. Of families with children less than 18 years old, 12.4 percent were married-couple families, 6.7 percent were female householder families with no husband present, and the remaining (2.4 percent) were male-headed households with no wife present.

Education: The educational attainment of the population 25 years and over was lower in the Coplay Public Library service area than in Pennsylvania. During the period 2008-2012, 11.5 percent of residents had earned a Bachelor's degree or higher, compared with 27.0 percent statewide. A total of 480 or 20.3 percent had not completed high school, compared with 11.7 percent for the commonwealth as a whole.

Income and Poverty: Households with incomes of \$25,000 to \$49,999 (33.9 percent) made up the largest percent of households in the Coplay Public Library service area in 2008-2012. For comparison, 24.4 percent of commonwealth households were in this range during the period.

In 2008-2012, the overall poverty rate for the Coplay Public Library service area was higher than Pennsylvania (16.4 percent compared to 13.1 percent). The poverty rate for the population under 18 years of age was 38.5 percent, compared with 11.7 percent of people 18 to 64 years and 6.3 percent for those aged 65 years and over. A total of 114 or 14.1 percent of all families had incomes below poverty level. In 2008-2012, 26.1 percent of families with related children and 57.2 percent of families with a female householder and no husband with related children present had incomes below the poverty level.

Class of Worker and Occupation: In 2008-2012, 85.0 percent of the workforce was private wage and salary workers; 9.7 percent were federal, state, or local government workers; and 5.3 percent were self-employed in their own (not incorporated) business.

The top occupation group for the civilian employed population 16 years and over in the Coplay Public Library service area in 2008-2012 was Sales and office (34.6 percent).

¹ Other race includes those who identified themselves as American Indian/Alaska Native, Asian, Native Hawaiian/Other Pacific Islander, Some Other Race and Two or More Races on the 2010 Census form.

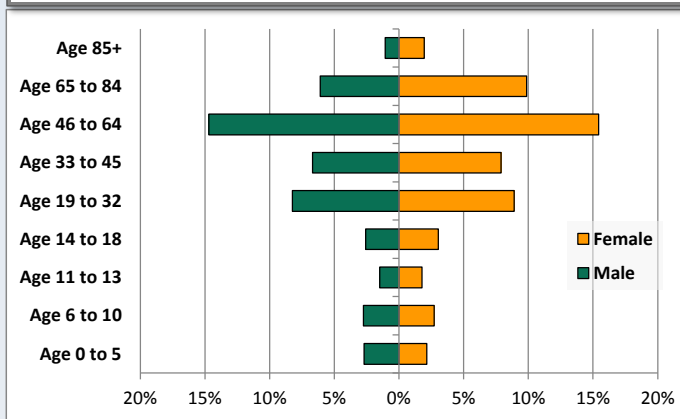
² People of Hispanic origin may be of any race.

Demographic Profile

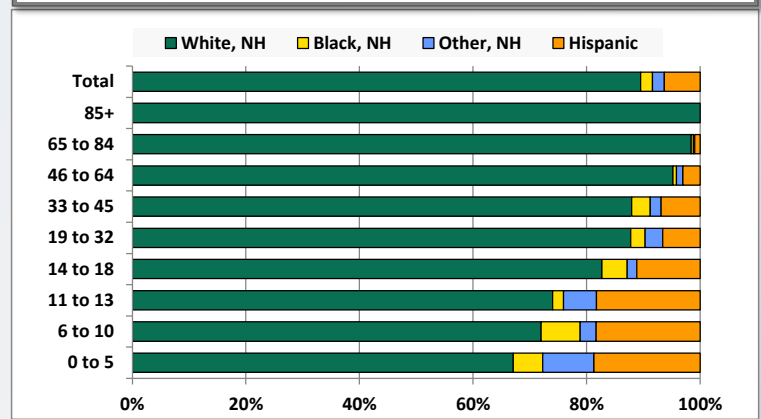
Coplay Public Library

Key Indicators		
	2000	2010
Population Growth		
Total Population	3,387	3,192
10-Year Growth	N/A	-5.8%
Diversity		
White Alone, Non-Hispanic	95.5%	89.5%
Black Alone, Non-Hispanic	1.3%	2.1%
Other Race Alone, Non-Hispanic	0.9%	2.1%
Percent Hispanic	2.3%	6.3%
Aging		
Percent 65 Years and Over	20.9%	19.0%
Households		
Percent Married Couple with Own Children	19.8%	12.4%
Percent Living Alone	29.3%	31.4%

Population by Library-Defined Age Group, 2010



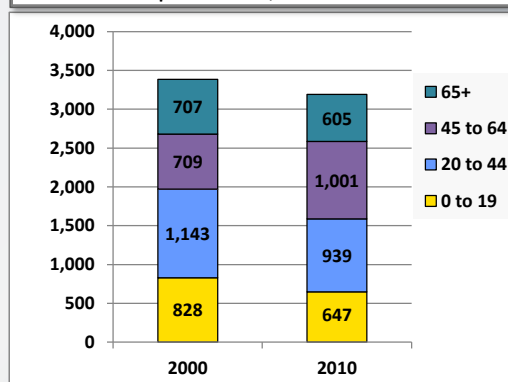
Race/Ethnicity by Library-Defined Age Group, 2010



Population Growth by Library-Defined Age Group, 2000 to 2010

Age Group	2010	Change	
		Numeric	Percent
Total	3,192	-195	-5.8%
85+	96	43	81.1%
65 to 84	509	-145	-22.2%
46 to 64	962	292	43.6%
33 to 45	465	-264	-36.2%
19 to 32	547	70	14.7%
14 to 18	179	-13	-6.8%
11 to 13	104	-36	-25.7%
6 to 10	175	-67	-27.7%
0 to 5	155	-75	-32.6%

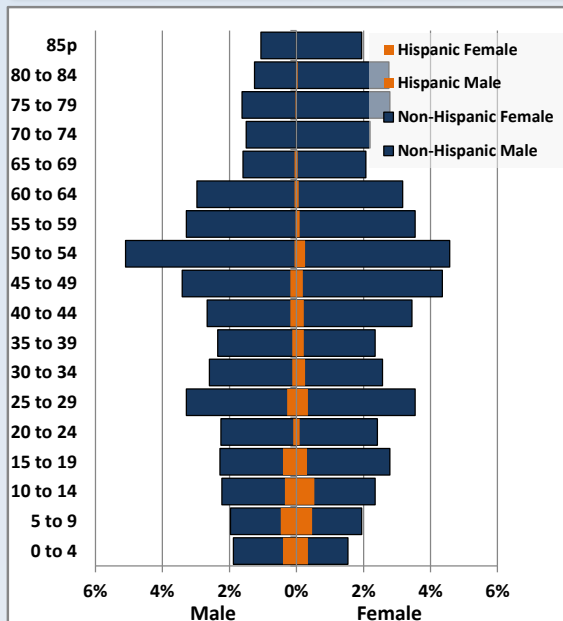
Population Total, 2000 and 2010



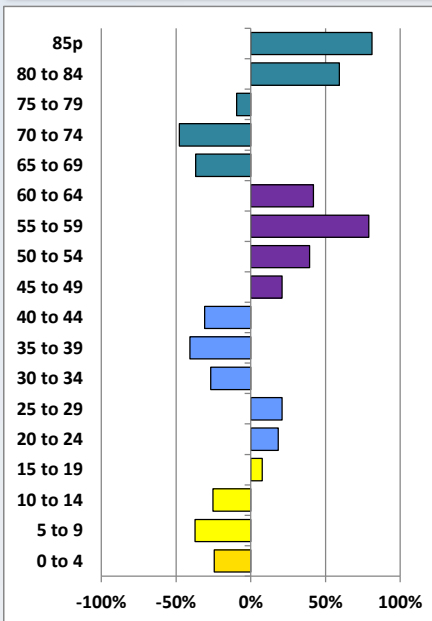
Demographic Profile

Coplay Public Library

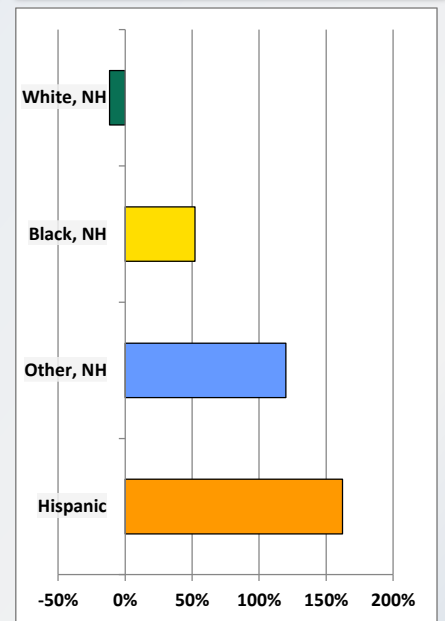
Population by 5-Year Age Cohorts



Pop Change by Age, 2000 to 2010

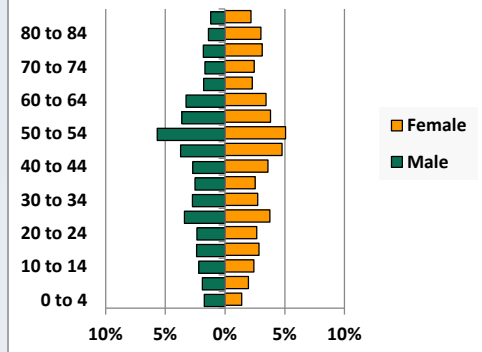


Pop Change by Race/Ethnicity, 2000 to 2010

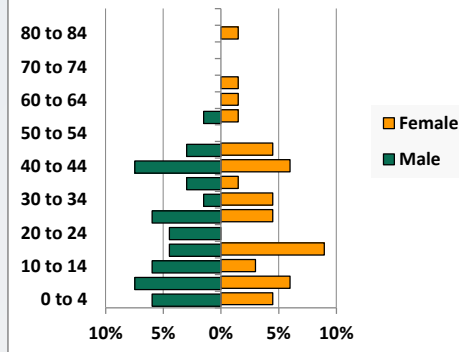


Population by Age, Race and Ethnicity 2010

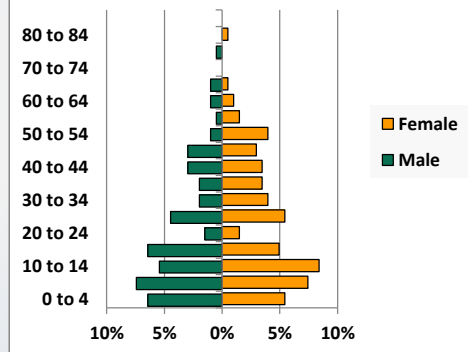
White, Not Hispanic



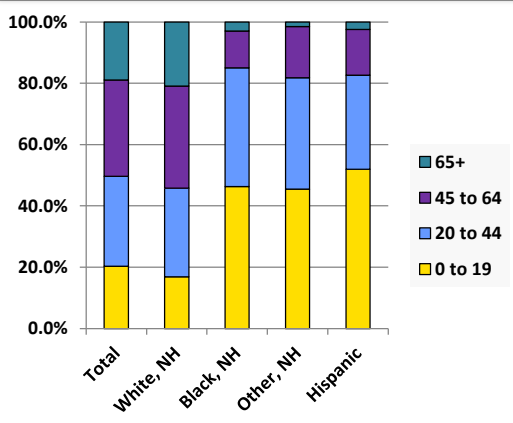
Black, Non-Hispanic



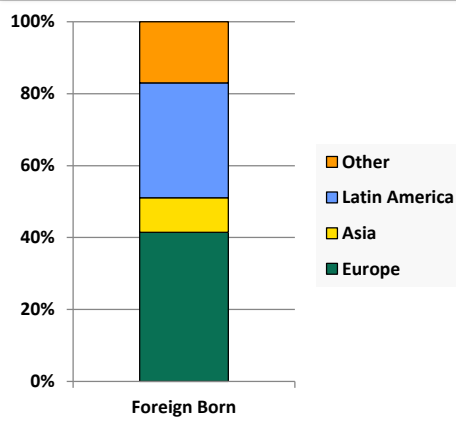
Hispanic



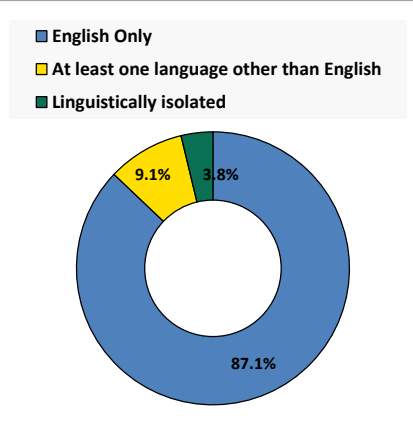
Age by Race and Ethnicity, 2010



Foreign Born, 2010



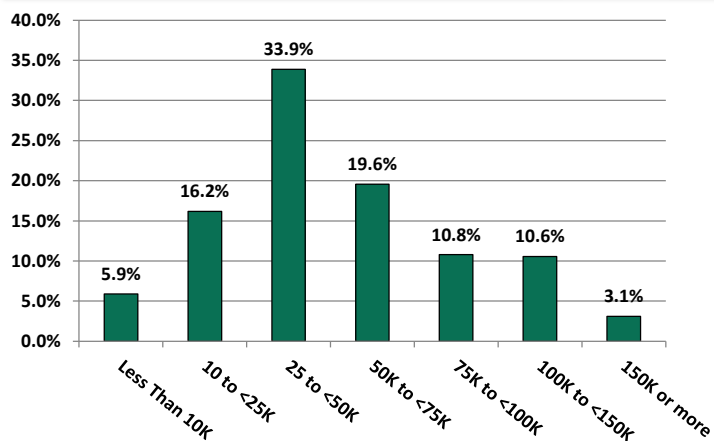
Household Language, 2010



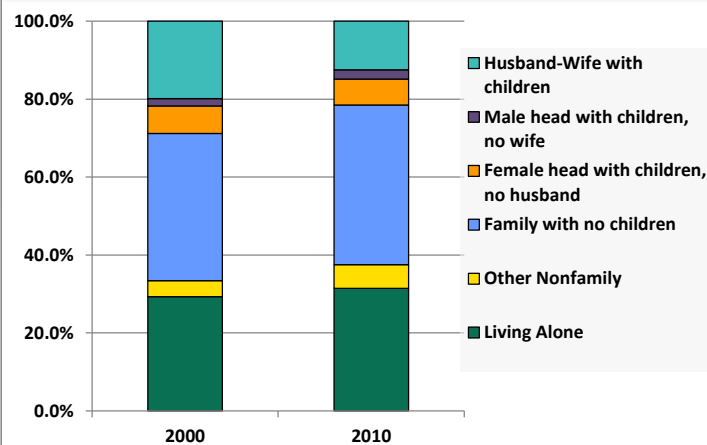
Demographic Profile

Coplay Public Library

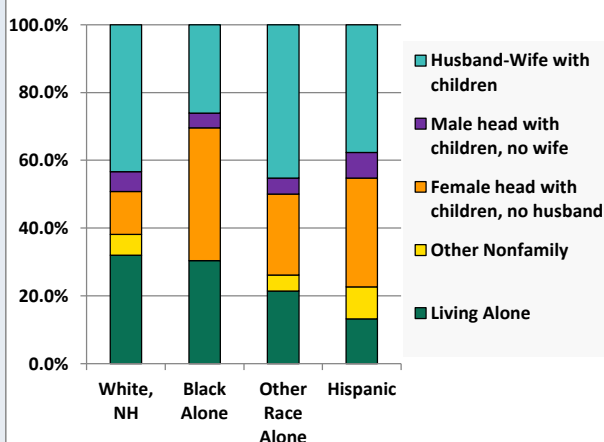
Household Income Distribution, 2008-2012



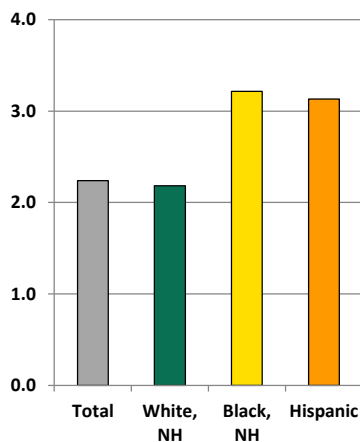
Household Type, 2000 and 2010



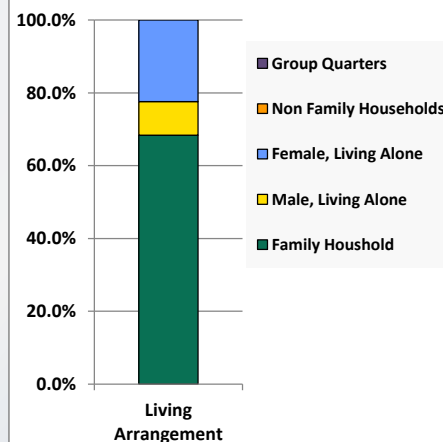
Household Type by Race/Ethnicity, 2010



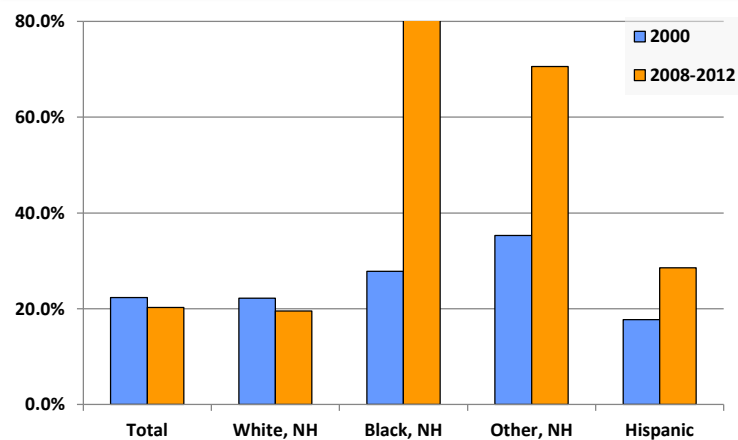
Average Household Size, 2010



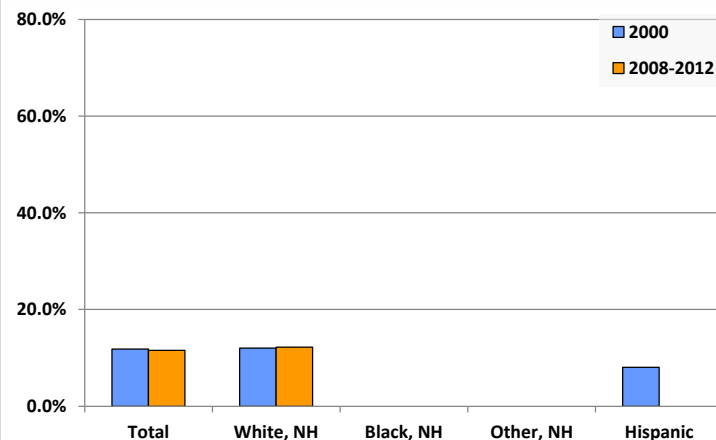
Living Arrangements 65+, 2008-2012



Percent of Adults that Did Not Complete High School



Percent of Adults Who Attained a Bachelor's Degree or Higher



Reference Data

Coplay Public Library

	Total Population	White, Non- Hispanic	Black, Non- Hispanic	Other, Non- Hispanic	Detail for Other, Non-Hispanic					Hispanic or Latino
					AIAN	Asian	NHOPI	Some Other Race	Two or More Races	
A. Total Population										
2000 Total	3,387	3,236	44	30	3	11	0	1	15	77
2000 pct of Total	100.0%	95.5%	1.3%	0.9%	0.1%	0.3%	0.0%	0.0%	0.4%	2.3%
2010 Total	3,192	2,857	67	66	9	26	0	0	31	202
2010 pct of Total	100.0%	89.5%	2.1%	2.1%	0.3%	0.8%	0.0%	0.0%	1.0%	6.3%
B. Population by Major Age Groups by Race and Ethnicity										
2000										
0-19	828	755	18	12	1	3	0	0	8	43
20-64	1,852	1,778	26	18	2	8	0	1	7	30
65+	707	703	0	0	0	0	0	0	0	4
85+	53	53	0	0	0	0	0	0	0	0
2010										
0-19	647	481	31	30	3	6	0	0	21	105
20-64	1,940	1,779	34	35	6	19	0	0	10	92
65+	605	597	2	1	0	1	0	0	0	5
85+	96	96	0	0	0	0	0	0	0	0
C. Age Mix for Each Racial and Ethnic Group										
2000										
0-19	24.4%	23.3%	40.9%	40.0%	33.3%	27.3%	0.0%	0.0%	53.3%	55.8%
20-64	54.7%	54.9%	59.1%	60.0%	66.7%	72.7%	0.0%	100.0%	46.7%	39.0%
65+	20.9%	21.7%	0.0%	0.0%	0.0%	0.0%	0.0%	0.0%	0.0%	5.2%
85+	1.6%	1.6%	0.0%	0.0%	0.0%	0.0%	0.0%	0.0%	0.0%	0.0%
2010										
0-19	20.3%	16.8%	46.3%	45.5%	33.3%	23.1%	0.0%	0.0%	67.7%	52.0%
20-64	60.8%	62.3%	50.7%	53.0%	66.7%	73.1%	0.0%	0.0%	32.3%	45.5%
65+	19.0%	20.9%	3.0%	1.5%	0.0%	3.8%	0.0%	0.0%	0.0%	2.5%
85+	3.0%	3.4%	0.0%	0.0%	0.0%	0.0%	0.0%	0.0%	0.0%	0.0%
D. Racial and Ethnic Composition of Each Age Group										
2000										
0-19	100.0%	91.2%	2.2%	1.4%	0.1%	0.4%	0.0%	0.0%	1.0%	5.2%
20-64	100.0%	96.0%	1.4%	1.0%	0.1%	0.4%	0.0%	0.1%	0.4%	1.6%
65+	100.0%	99.4%	0.0%	0.0%	0.0%	0.0%	0.0%	0.0%	0.0%	0.6%
85+	100.0%	100.0%	0.0%	0.0%	0.0%	0.0%	0.0%	0.0%	0.0%	0.0%
2010										
0-19	100.0%	74.3%	4.8%	4.6%	0.5%	0.9%	0.0%	0.0%	3.2%	16.2%
20-64	100.0%	91.7%	1.8%	1.8%	0.3%	1.0%	0.0%	0.0%	0.5%	4.7%
65+	100.0%	98.7%	0.3%	0.2%	0.0%	0.2%	0.0%	0.0%	0.0%	0.8%
85+	100.0%	100.0%	0.0%	0.0%	0.0%	0.0%	0.0%	0.0%	0.0%	0.0%
E. Population Growth										
2000-2010, Change										
0-19	-181	-274	13	18	2	3	0	0	13	62
20-64	88	1	8	17	4	11	0	-1	3	62
65+	-102	-106	2	1	0	1	0	0	0	1
85+	43	43	0	0	0	0	0	0	0	0
Total	-195	-379	23	36	6	15	0	-1	16	125
2000-2010, Pct Change										
0-19	-21.9%	-36.3%	72.2%	150.0%	200.0%	100.0%	0.0%	0.0%	162.5%	144.2%
20-64	4.8%	0.1%	30.8%	94.4%	200.0%	137.5%	0.0%	-100.0%	42.9%	206.7%
65+	-14.4%	-15.1%	0.0%	0.0%	0.0%	0.0%	0.0%	0.0%	0.0%	25.0%
85+	81.1%	81.1%	0.0%	0.0%	0.0%	0.0%	0.0%	0.0%	0.0%	0.0%
Total	-5.8%	-11.7%	52.3%	120.0%	200.0%	136.4%	0.0%	-100.0%	106.7%	162.3%

Source: Decennial Census 2010, 2000, American Community Survey 2008-2012

Prepared for the Pennsylvania State Library by The Pennsylvania State Data Center, 9/2014

Reference Data

Coplay Public Library

	Total Population	White, Non- Hispanic	Black, Non- Hispanic	Other, Non- Hispanic	Detail for Other, Non-Hispanic					Hispanic or Latino
					AIAN	Asian	NHOPI	Some Other Race	Two or More Races	
F. Population by Library-Defined Age Groups, 2010										
0-5	155	104	8	14	1	2	0	0	11	29
6-10	175	126	12	5	0	3	0	0	2	32
11-13	104	77	2	6	0	0	0	0	6	19
14-18	179	148	8	3	1	1	0	0	1	20
19-32	547	480	14	17	2	8	0	0	7	36
33-45	465	409	15	9	2	4	0	0	3	32
46-64	962	916	6	11	3	7	0	0	1	29
65-84	509	501	2	1	0	1	0	0	0	5
85+	96	96	0	0	0	0	0	0	0	0
Total	3,192	2,857	67	66	9	26	0	0	31	202
G. Population by 5-Year Age Cohorts, 2010										
0-4	133	90	7	12	1	2	0	0	9	24
5-9	155	110	9	6	0	2	0	0	4	30
10-14	174	132	6	8	0	1	0	0	7	28
15-19	185	149	9	4	2	1	0	0	1	23
20-24	155	143	3	3	0	1	0	0	2	6
25-29	238	204	7	7	0	3	0	0	4	20
30-34	177	156	4	5	1	4	0	0	0	12
35-39	161	144	3	3	0	3	0	0	0	11
40-44	208	180	9	6	2	1	0	0	3	13
45-49	260	242	5	1	0	1	0	0	0	12
50-54	319	307	0	2	0	2	0	0	0	10
55-59	222	212	2	4	1	2	0	0	1	4
60-64	200	191	1	4	2	2	0	0	0	4
65-69	120	116	1	0	0	0	0	0	0	3
70-74	118	118	0	0	0	0	0	0	0	0
75-79	142	141	0	0	0	0	0	0	0	1
80-84	129	126	1	1	0	1	0	0	0	1
85-89	66	66	0	0	0	0	0	0	0	0
90-94	29	29	0	0	0	0	0	0	0	0
95-99	1	1	0	0	0	0	0	0	0	0
100+	0	0	0	0	0	0	0	0	0	0
Total	3,192	2,857	67	66	9	26	0	0	31	202

Source: Decennial Census 2010, 2000, American Community Survey 2008-2012
 Prepared for the Pennsylvania State Library by The Pennsylvania State Data Center, 9/2014

Reference Data

Coplay Public Library

H. Income Distribution, 2008-2012

Range (in thousands)	Households	Pct of Total
<\$10K	83	5.9%
\$10K to <\$25K	228	16.2%
\$25K to <\$50K	478	33.9%
\$50K to <\$75K	276	19.6%
\$75K to <\$100K	152	10.8%
\$100K to <\$150K	149	10.6%
\$150K+	44	3.1%

I. Household Type, 2010

Household Type	2000	2000pct	2010	2010pct
Total Households	1,431	100.0%	1,422	100.0%
Family Households	953	66.6%	888	62.4%
Husband-wife, no children w/children	284	19.8%	177	12.4%
Female head, no husband, w/ children	101	7.1%	95	6.7%
Male head, no wife, w/ children	27	1.9%	34	2.4%
Without children	541	37.8%	582	40.9%
Nonfamily households	478	33.4%	534	37.6%
Living alone	419	29.3%	447	31.4%
Other nonfamily	59	4.1%	87	6.1%

J. Household Type by Race and Ethnicity, 2008-2012

Household Type	White, NH	Black, NH	Other, NH	Hispanic
Total Households	1,333	23	42	53
Husband wife family	43.4%	26.1%	45.2%	37.7%
Family with male head, no wife	5.9%	4.3%	4.8%	7.5%
family with female head, no husband	12.6%	39.1%	23.8%	32.1%
Living alone	32.0%	30.4%	21.4%	13.2%
Other nonfamily	6.2%	0.0%	4.8%	9.4%

K. Poverty, 2008-2012

Families	Poverty	PA
All families	14.1%	9.1%
Families w/ related children	26.1%	15.3%
Female householder, no husband present	39.9%	28.8%
Female householder, no husband present, w/ related children	57.2%	39.2%
All people	16.4%	13.1%
Under 18 years	38.5%	18.4%
18 to 64 years	11.7%	12.3%
65 years and over	6.3%	8.4%

L. Educational Attainment by Race and Ethnicity, 2008-2012

Education Level	White, NH	Black	Other	Hispanic	Total
Population 25 years and over	2,233	8	51	126	2,367
Less than high school	19.5%	100.0%	71%	28.6%	20.3%
High school graduate (includes equivalency)	46.1%	0.0%	4%	25.4%	44.9%
Some college or associates degree	22.1%	0.0%	25%	46.0%	23.3%
Bachelors degree or higher	12.2%	0.0%	0%	0.0%	11.5%

M. Occupation, 2008-2012

Occupation	Estimate	Percent
Civilian population age 16 years and over	1,549	100.0%
Management, professional, and related occupations	392	25.3%
Service occupations	253	16.3%
Sales and office occupations	536	34.6%
Farming, fishing, and forestry occupations	1	0.1%
Construction, extraction, maintenance, and repair occupations	138	8.9%
Production, transportation, and material moving occupations	229	14.8%

N. Class of Worker, 2008-2012

Occupation	Estimate	Percent
Civilian population age 16 years and over	1,549	100.0%
Private, for profit, wage and salary employee	1,157	74.7%
Private, not for profit, wage and salary employee	159	10.3%
Private, for profit, wage and salary self-employed in own business	0	0.0%
Government workers	151	9.7%
Self-employed in own not incorporated business	82	5.3%
Unpaid family workers in family business	0	0.0%