

Demographic Profile Coraopolis Memorial Library

Population Growth: The total population of the Coraopolis Memorial Library service area decreased by -8.2 percent over the past decade to 6,761; this decline rate was lower than the statewide rate of 3.4 percent.

Age and Sex: In 2010, the Coraopolis Memorial Library service area had a total population of 6,761 - 3,253 males (48.1 percent) and 3,508 females (51.9 percent). The age structure of the population in 2010 was as follows: 20.3 percent of the population was under 20 years old, 60.9 percent was 20 to 64 years old and 18.8 percent was 65 years or older.

Race and Ethnicity: For people reporting one race alone, not of Hispanic ethnicity, 83.0 percent were White; 10.5 percent were Black or African American; 3.9 percent were Other Race Alone.¹ A total of 174 or 2.6 percent of the population were Hispanic.²

Households: In 2010, there were 3,285 households in the Coraopolis Memorial Library service area. The average household size was 2.04 people. Families made up 48.7 percent of the households. This figure includes both families with (19.1 percent) and without (29.6 percent) children. Of families with children less than 18 years old, 10.5 percent were married-couple families, 6.5 percent were female householder families with no husband present, and the remaining (2.1 percent) were male-headed households with no wife present.

Education: The educational attainment of the population 25 years and over was lower in the Coraopolis Memorial Library service area than in Pennsylvania. During the period 2008-2012, 19.8 percent of residents had earned a Bachelor's degree or higher, compared with 27.0 percent statewide. A total of 546 or 11.5 percent had not completed high school, compared with 11.7 percent for the commonwealth as a whole.

Income and Poverty: Households with incomes of \$25,000 to \$49,999 (35.0 percent) made up the largest percent of households in the Coraopolis Memorial Library service area in 2008-2012. For comparison, 24.4 percent of commonwealth households were in this range during the period.

In 2008-2012, the overall poverty rate for the Coraopolis Memorial Library service area was higher than Pennsylvania (20.4 percent compared to 13.1 percent). The poverty rate for the population under 18 years of age was 34.1 percent, compared with 17.3 percent of people 18 to 64 years and 15.7 percent for those aged 65 years and over. A total of 222 or 14.9 percent of all families had incomes below poverty level. In 2008-2012, 27.9 percent of families with related children and 51.2 percent of families with a female householder and no husband with related children present had incomes below the poverty level.

Class of Worker and Occupation: In 2008-2012, 90.7 percent of the workforce was private wage and salary workers; 7.6 percent were federal, state, or local government workers; and 1.6 percent were self-employed in their own (not incorporated) business.

The top occupation group for the civilian employed population 16 years and over in the Coraopolis Memorial Library service area in 2008-2012 was Sales and office (27.9 percent).

¹ Other race includes those who identified themselves as American Indian/Alaska Native, Asian, Native Hawaiian/Other Pacific Islander, Some Other Race and Two or More Races on the 2010 Census form.

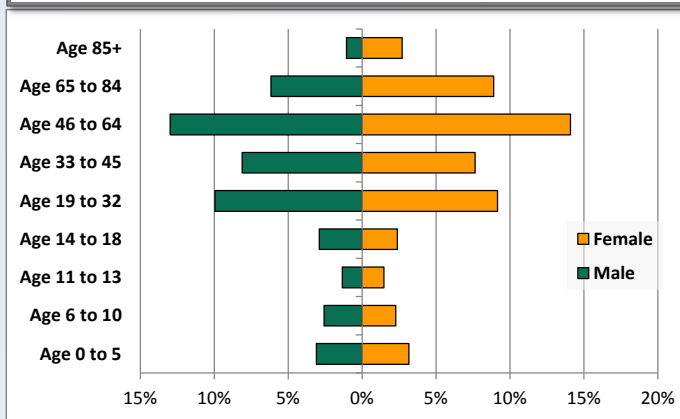
² People of Hispanic origin may be of any race.

Demographic Profile

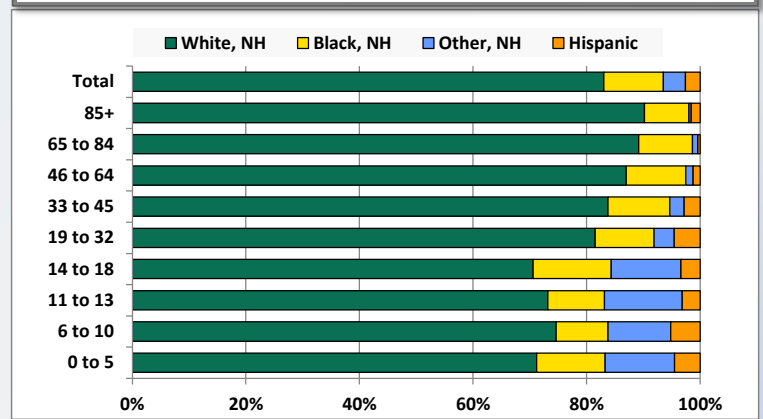
Coraopolis Memorial Library

Key Indicators		
	2000	2010
Population Growth		
Total Population	7,363	6,761
10-Year Growth	N/A	-8.2%
Diversity		
White Alone, Non-Hispanic	86.5%	83.0%
Black Alone, Non-Hispanic	10.5%	10.5%
Other Race Alone, Non-Hispanic	2.0%	3.9%
Percent Hispanic	1.0%	2.6%
Aging		
Percent 65 Years and Over	21.6%	18.8%
Households		
Percent Married Couple with Own Children	13.4%	10.5%
Percent Living Alone	40.9%	43.1%

Population by Library-Defined Age Group, 2010



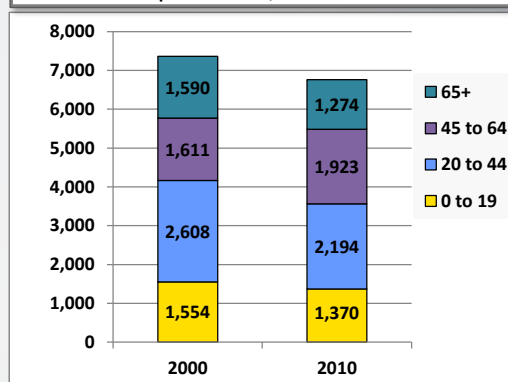
Race/Ethnicity by Library-Defined Age Group, 2010



Population Growth by Library-Defined Age Group, 2000 to 2010

Age Group	2010	Change	
		Numeric	Percent
Total	6,761	-602	-8.2%
85+	255	55	27.5%
65 to 84	1,019	-371	-26.7%
46 to 64	1,831	348	23.5%
33 to 45	1,065	-439	-29.2%
19 to 32	1,293	5	0.4%
14 to 18	357	-10	-2.7%
11 to 13	190	0	0.0%
6 to 10	327	-123	-27.3%
0 to 5	424	-67	-13.6%

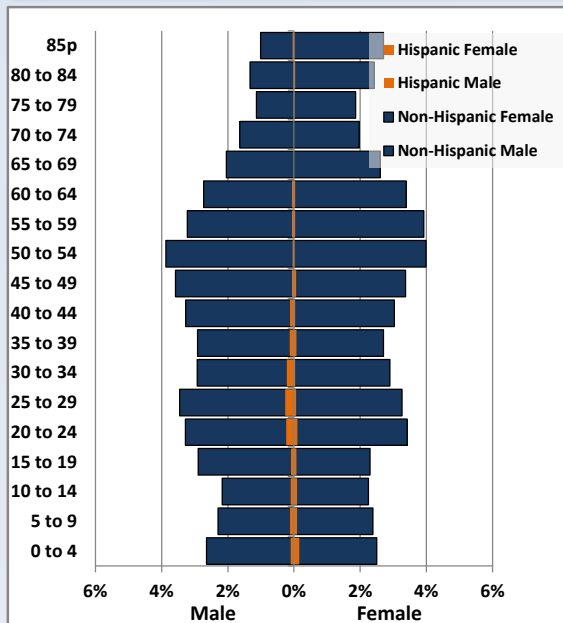
Population Total, 2000 and 2010



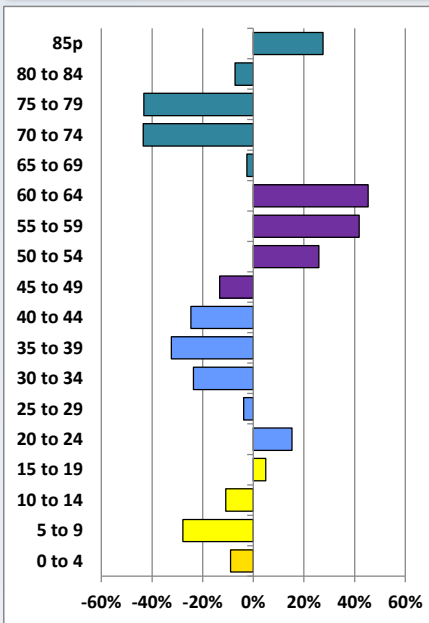
Demographic Profile

Coraopolis Memorial Library

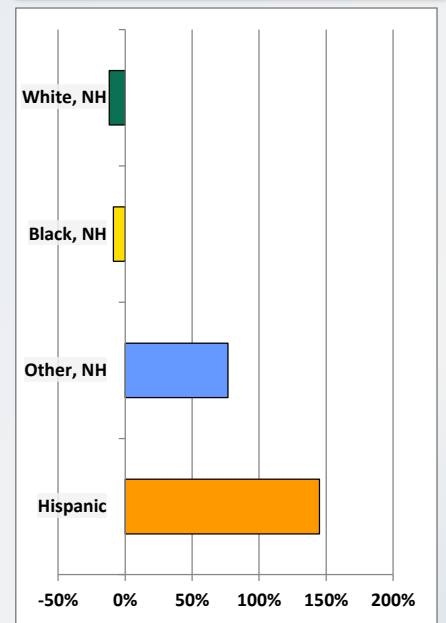
Population by 5-Year Age Cohorts



Pop Change by Age, 2000 to 2010

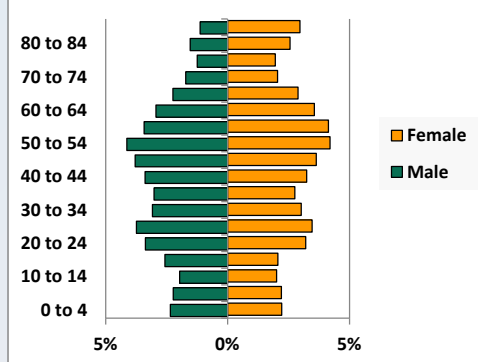


Pop Change by Race/Ethnicity, 2000 to 2010

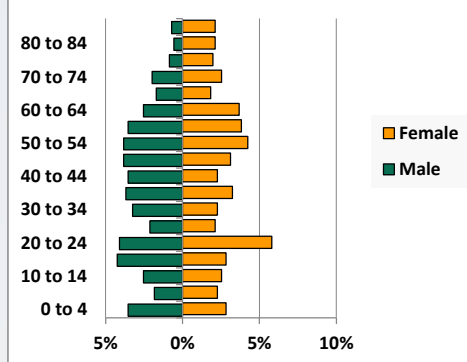


Population by Age, Race and Ethnicity 2010

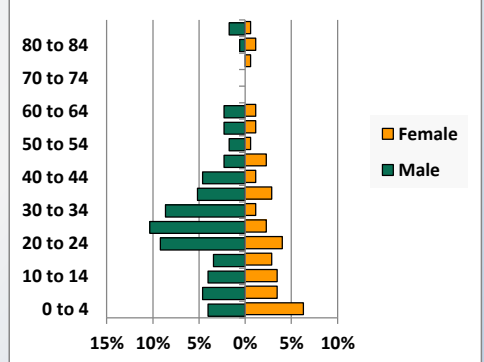
White, Not Hispanic



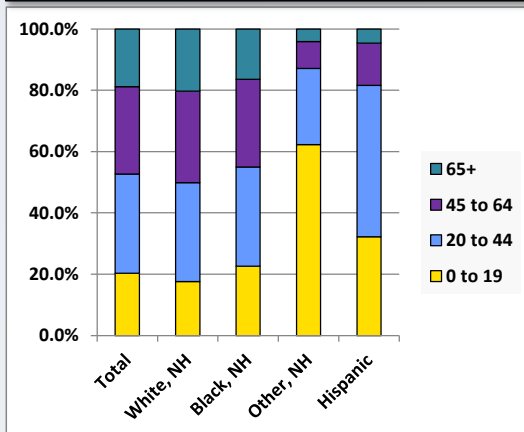
Black, Non-Hispanic



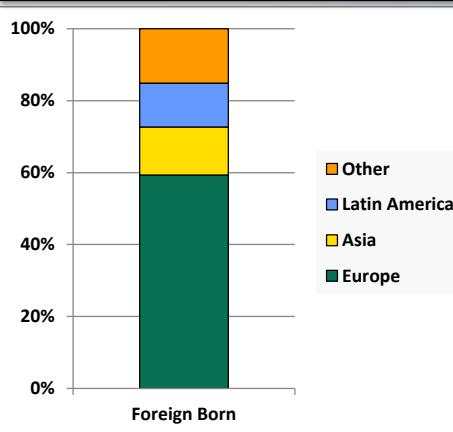
Hispanic



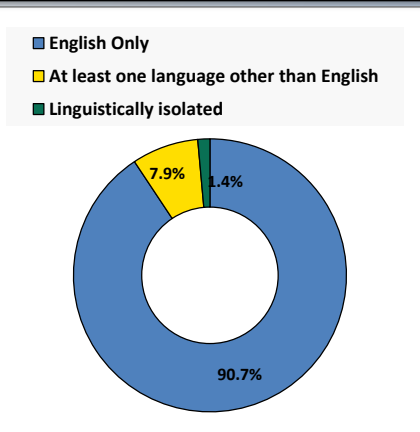
Age by Race and Ethnicity, 2010



Foreign Born, 2010



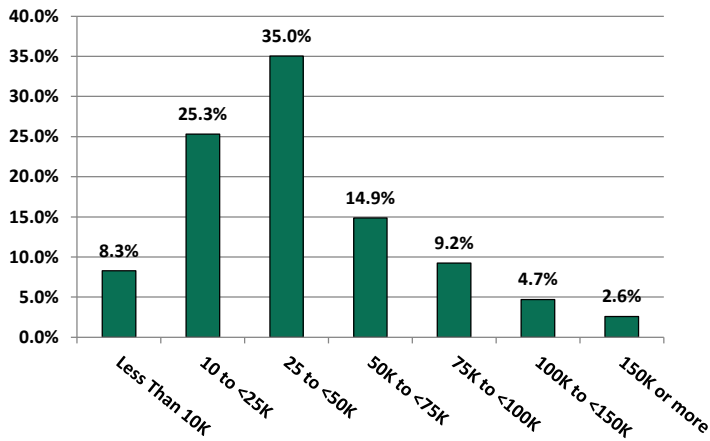
Household Language, 2010



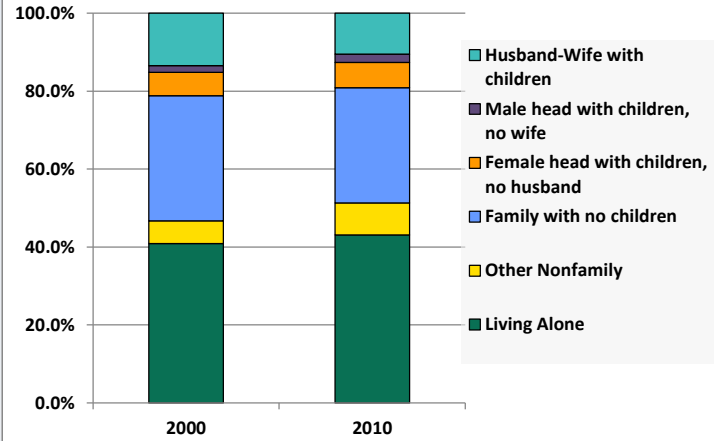
Demographic Profile

Coraopolis Memorial Library

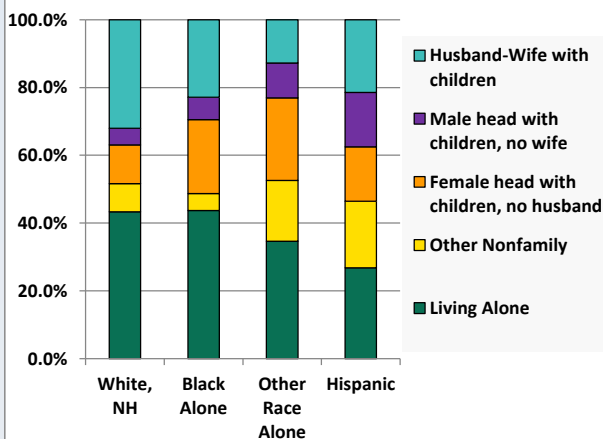
Household Income Distribution, 2008-2012



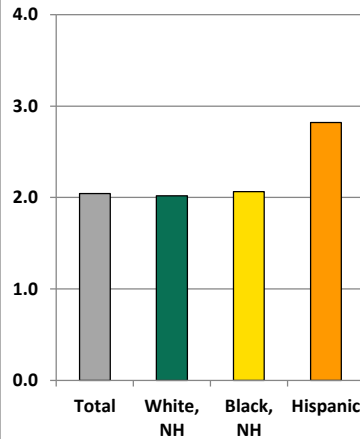
Household Type, 2000 and 2010



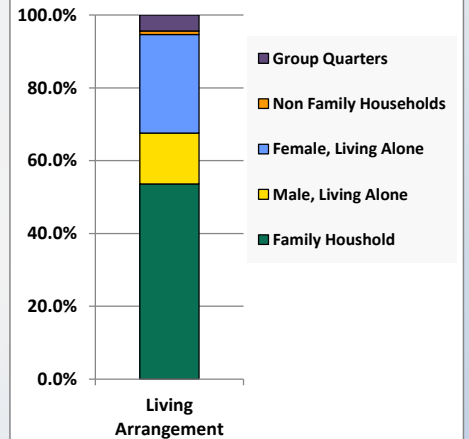
Household Type by Race/Ethnicity, 2010



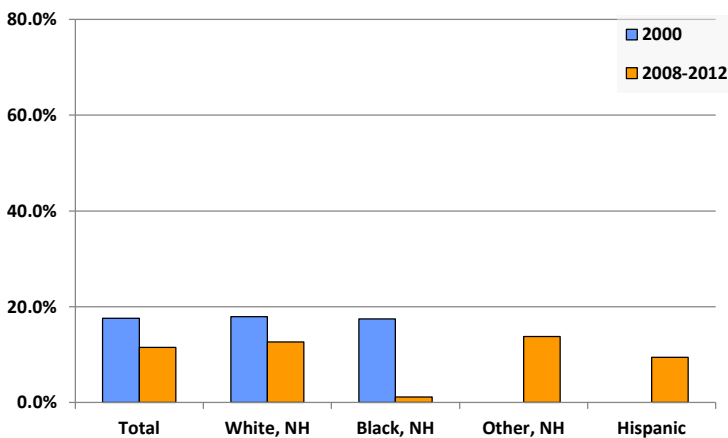
Average Household Size, 2010



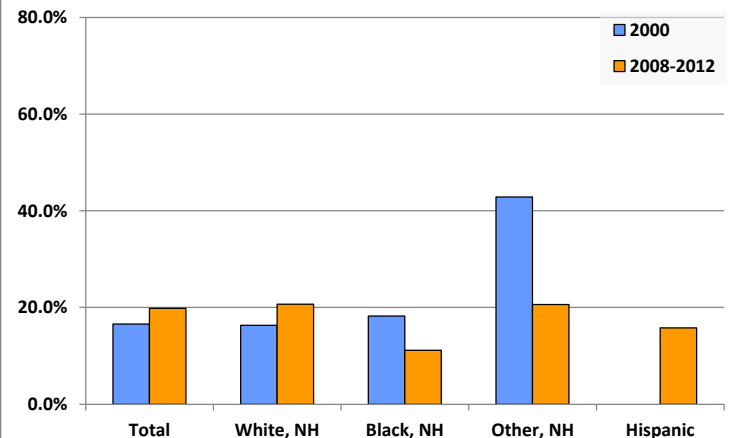
Living Arrangements 65+, 2008-2012



Percent of Adults that Did Not Complete High School



Percent of Adults Who Attained a Bachelor's Degree or Higher



Reference Data

Coraopolis Memorial Library

					Detail for Other, Non-Hispanic					
	Total Population	White, Non- Hispanic	Black, Non- Hispanic	Other, Non- Hispanic	AIAN	Asian	NHOPI	Some Other	Two or More	Hispanic or
								Race	Races	Latino
A. Total Population										
2000 Total	7,363	6,367	775	150	6	17	1	22	104	71
2000 pct of Total	100.0%	86.5%	10.5%	2.0%	0.1%	0.2%	0.0%	0.3%	1.4%	1.0%
2010 Total	6,761	5,615	707	265	13	21	7	24	200	174
2010 pct of Total	100.0%	83.0%	10.5%	3.9%	0.2%	0.3%	0.1%	0.4%	3.0%	2.6%
B. Population by Major Age Groups by Race and Ethnicity										
2000										
0-19	1,554	1,235	210	83	0	2	0	15	66	26
20-64	4,219	3,706	416	57	4	14	0	7	32	40
65+	1,590	1,426	149	10	2	1	1	0	6	5
85+	200	181	16	2	0	0	0	0	2	1
2010										
0-19	1,370	989	160	165	3	3	4	16	139	56
20-64	4,117	3,487	431	89	9	17	3	7	53	110
65+	1,274	1,139	116	11	1	1	0	1	8	8
85+	255	230	20	1	0	0	0	0	1	4
C. Age Mix for Each Racial and Ethnic Group										
2000										
0-19	21.1%	19.4%	27.1%	55.3%	0.0%	11.8%	0.0%	68.2%	63.5%	36.6%
20-64	57.3%	58.2%	53.7%	38.0%	66.7%	82.4%	0.0%	31.8%	30.8%	56.3%
65+	21.6%	22.4%	19.2%	6.7%	33.3%	5.9%	100.0%	0.0%	5.8%	7.0%
85+	2.7%	2.8%	2.1%	1.3%	0.0%	0.0%	0.0%	0.0%	1.9%	1.4%
2010										
0-19	20.3%	17.6%	22.6%	62.3%	23.1%	14.3%	57.1%	66.7%	69.5%	32.2%
20-64	60.9%	62.1%	61.0%	33.6%	69.2%	81.0%	42.9%	29.2%	26.5%	63.2%
65+	18.8%	20.3%	16.4%	4.2%	7.7%	4.8%	0.0%	4.2%	4.0%	4.6%
85+	3.8%	4.1%	2.8%	0.4%	0.0%	0.0%	0.0%	0.0%	0.5%	2.3%
D. Racial and Ethnic Composition of Each Age Group										
2000										
0-19	100.0%	79.5%	13.5%	5.3%	0.0%	0.1%	0.0%	1.0%	4.2%	1.7%
20-64	100.0%	87.8%	9.9%	1.4%	0.1%	0.3%	0.0%	0.2%	0.8%	0.9%
65+	100.0%	89.7%	9.4%	0.6%	0.1%	0.1%	0.1%	0.0%	0.4%	0.3%
85+	100.0%	90.5%	8.0%	1.0%	0.0%	0.0%	0.0%	0.0%	1.0%	0.5%
2010										
0-19	100.0%	72.2%	11.7%	12.0%	0.2%	0.2%	0.3%	1.2%	10.1%	4.1%
20-64	100.0%	84.7%	10.5%	2.2%	0.2%	0.4%	0.1%	0.2%	1.3%	2.7%
65+	100.0%	89.4%	9.1%	0.9%	0.1%	0.1%	0.0%	0.1%	0.6%	0.6%
85+	100.0%	90.2%	7.8%	0.4%	0.0%	0.0%	0.0%	0.0%	0.4%	1.6%
E. Population Growth										
2000-2010, Change										
0-19	-184	-246	-50	82	3	1	4	1	73	30
20-64	-102	-219	15	32	5	3	3	0	21	70
65+	-316	-287	-33	1	-1	0	-1	1	2	3
85+	55	49	4	-1	0	0	0	0	-1	3
Total	-602	-752	-68	115	7	4	6	2	96	103
2000-2010, Pct Change										
0-19	-11.8%	-19.9%	-23.8%	98.8%	0.0%	50.0%	0.0%	6.7%	110.6%	115.4%
20-64	-2.4%	-5.9%	3.6%	56.1%	125.0%	21.4%	0.0%	0.0%	65.6%	175.0%
65+	-19.9%	-20.1%	-22.1%	10.0%	-50.0%	0.0%	-100.0%	0.0%	33.3%	60.0%
85+	27.5%	27.1%	25.0%	-50.0%	0.0%	0.0%	0.0%	0.0%	-50.0%	300.0%
Total	-8.2%	-11.8%	-8.8%	76.7%	116.7%	23.5%	600.0%	9.1%	92.3%	145.1%

Source: Decennial Census 2010, 2000, American Community Survey 2008-2012

Prepared for the Pennsylvania State Library by The Pennsylvania State Data Center, 9/2014

Reference Data

Coraopolis Memorial Library

	Total Population	White, Non- Hispanic	Black, Non- Hispanic	Other, Non- Hispanic	Detail for Other, Non-Hispanic					Hispanic or Latino
					AIAN	Asian	NHOPI	Some Other	Two or More	
								Race	Races	
F. Population by Library-Defined Age Groups, 2010										
0-5	424	302	51	52	2	2	1	8	39	19
6-10	327	244	30	36	0	1	1	3	31	17
11-13	190	139	19	26	0	0	0	2	24	6
14-18	357	252	49	44	1	0	0	3	40	12
19-32	1,293	1,054	134	46	1	8	4	4	29	59
33-45	1,065	892	116	27	5	4	1	0	17	30
46-64	1,831	1,593	192	23	3	5	0	3	12	23
65-84	1,019	909	96	10	1	1	0	1	7	4
85+	255	230	20	1	0	0	0	0	1	4
Total	6,761	5,615	707	265	13	21	7	24	200	174
G. Population by 5-Year Age Cohorts, 2010										
0-4	366	257	45	46	2	2	1	8	33	18
5-9	330	249	29	38	0	1	0	3	34	14
10-14	312	223	36	40	1	0	1	2	36	13
15-19	362	260	50	41	0	0	2	3	36	11
20-24	476	369	70	14	1	3	1	0	9	23
25-29	477	405	30	20	0	3	1	4	12	22
30-34	411	343	39	12	0	5	0	0	7	17
35-39	394	324	49	7	1	0	0	0	6	14
40-44	436	372	41	13	4	1	1	0	7	10
45-49	478	417	49	4	0	2	0	0	2	8
50-54	536	468	57	7	2	0	0	1	4	4
55-59	489	424	52	7	0	3	0	1	3	6
60-64	420	365	44	5	1	0	0	1	3	6
65-69	314	288	25	1	0	1	0	0	0	0
70-74	244	211	32	1	1	0	0	0	0	0
75-79	204	180	20	3	0	0	0	0	3	1
80-84	257	230	19	5	0	0	0	1	4	3
85-89	162	146	13	0	0	0	0	0	0	3
90-94	73	64	7	1	0	0	0	0	1	1
95-99	16	16	0	0	0	0	0	0	0	0
100+	4	4	0	0	0	0	0	0	0	0
Total	6,761	5,615	707	265	13	21	7	24	200	174

Source: Decennial Census 2010, 2000, American Community Survey 2008-2012

Prepared for the Pennsylvania State Library by The Pennsylvania State Data Center, 9/2014

Page 6

Reference Data

Coraopolis Memorial Library

H. Income Distribution, 2008-2012

Range (in thousands)	Households	Pct of Total
<\$10K	261	8.3%
\$10K to <\$25K	798	25.3%
\$25K to <\$50K	1,104	35.0%
\$50K to <\$75K	469	14.9%
\$75K to <\$100K	291	9.2%
\$100K to <\$150K	148	4.7%
\$150K+	81	2.6%

I. Household Type, 2010

Household Type	2000	2000pct	2010	2010pct
Total Households	3,504	100.0%	3,285	100.0%
Family Households	1,866	53.3%	1,599	48.7%
Husband-wife, no children w/children	471	13.4%	345	10.5%
Female head, no husband, w/ children	211	6.0%	213	6.5%
Male head, no wife, w/ children	61	1.7%	70	2.1%
Without children	1,123	32.0%	971	29.6%
Nonfamily households	1,638	46.7%	1,686	51.3%
Living alone	1,434	40.9%	1,416	43.1%
Other nonfamily	204	5.8%	270	8.2%

J. Household Type by Race and Ethnicity, 2008-2012

Household Type	White, NH	Black, NH	Other, NH	Hispanic
Total Households	2,825	359	78	56
Husband wife family	32.0%	22.8%	12.8%	21.4%
Family with male head, no wife	4.9%	6.7%	10.3%	16.1%
family with female head, no husband	11.4%	21.7%	24.4%	16.1%
Living alone	43.3%	43.7%	34.6%	26.8%
Other nonfamily	8.3%	5.0%	17.9%	19.6%

K. Poverty, 2008-2012

Families	Poverty	PA
All families	14.9%	9.1%
Families w/ related children	27.9%	15.3%
Female householder, no husband present	33.8%	28.8%
Female householder, no husband present, w/ related children	51.2%	39.2%
All people	20.4%	13.1%
Under 18 years	34.1%	18.4%
18 to 64 years	17.3%	12.3%
65 years and over	15.7%	8.4%

L. Educational Attainment by Race and Ethnicity, 2008-2012

Education Level	White, NH	Black	Other	Hispanic	Total
Population 25 years and over	4,033	510	160	95	4,742
Less than high school	12.6%	1.2%	14%	9.5%	11.5%
High school graduate (includes equivalency)	43.3%	52.7%	14%	10.5%	43.1%
Some college or associates degree	23.4%	34.9%	52%	64.2%	25.5%
Bachelors degree or higher	20.7%	11.2%	21%	15.8%	19.8%

M. Occupation, 2008-2012

Occupation	Estimate	Percent
Civilian population age 16 years and over	3,231	100.0%
Management, professional, and related occupations	847	26.2%
Service occupations	715	22.1%
Sales and office occupations	903	27.9%
Farming, fishing, and forestry occupations	0	0.0%
Construction, extraction, maintenance, and repair occupations	293	9.1%
Production, transportation, and material moving occupations	473	14.6%

N. Class of Worker, 2008-2012

Occupation	Estimate	Percent
Civilian population age 16 years and over	3,231	100.0%
Private, for profit, wage and salary employee	2,527	78.2%
Private, not for profit, wage and salary employee	339	10.5%
Private, for profit, wage and salary self-employed in own business	63	1.9%
Government workers	247	7.6%
Self-employed in own not incorporated business	53	1.6%
Unpaid family workers in family business	2	0.1%