

## Demographic Profile Corry Public Library

**Population Growth:** The total population of the Corry Public Library service area decreased by -2.5 percent over the past decade to 11,963; this decline rate was lower than the statewide rate of 3.4 percent.

**Age and Sex:** In 2010, the Corry Public Library service area had a total population of 11,963 - 5,843 males (48.8 percent) and 6,120 females (51.2 percent). The age structure of the population in 2010 was as follows: 29.6 percent of the population was under 20 years old, 54.9 percent was 20 to 64 years old and 15.4 percent was 65 years or older.

**Race and Ethnicity:** For people reporting one race alone, not of Hispanic ethnicity, 97.5 percent were White; .3 percent were Black or African American; 1.6 percent were Other Race Alone.<sup>1</sup> A total of 80 or .7 percent of the population were Hispanic.<sup>2</sup>

**Households:** In 2010, there were 4,537 households in the Corry Public Library service area. The average household size was 2.61 people. Families made up 69.5 percent of the households. This figure includes both families with (30.9 percent) and without (38.5 percent) children. Of families with children less than 18 years old, 19.7 percent were married-couple families, 7.8 percent were female householder families with no husband present, and the remaining (3.5 percent) were male-headed households with no wife present.

**Education:** The educational attainment of the population 25 years and over was lower in the Corry Public Library service area than in Pennsylvania. During the period 2008-2012, 12.5 percent of residents had earned a Bachelor's degree or higher, compared with 27.0 percent statewide. A total of 1,079 or 13.9 percent had not completed high school, compared with 11.7 percent for the commonwealth as a whole.

**Income and Poverty:** Households with incomes of \$25,000 to \$49,999 (35.3 percent) made up the largest percent of households in the Corry Public Library service area in 2008-2012. For comparison, 24.4 percent of commonwealth households were in this range during the period.

In 2008-2012, the overall poverty rate for the Corry Public Library service area was higher than Pennsylvania (22.2 percent compared to 13.1 percent). The poverty rate for the population under 18 years of age was 34.4 percent, compared with 20.1 percent of people 18 to 64 years and 8.4 percent for those aged 65 years and over. A total of 602 or 18.9 percent of all families had incomes below poverty level. In 2008-2012, 34.0 percent of families with related children and 65.5 percent of families with a female householder and no husband with related children present had incomes below the poverty level.

**Class of Worker and Occupation:** In 2008-2012, 81.7 percent of the workforce was private wage and salary workers; 9.5 percent were federal, state, or local government workers; and 7.8 percent were self-employed in their own (not incorporated) business.

The top occupation group for the civilian employed population 16 years and over in the Corry Public Library service area in 2008-2012 was Production (26.8 percent).

---

<sup>1</sup> Other race includes those who identified themselves as American Indian/Alaska Native, Asian, Native Hawaiian/Other Pacific Islander, Some Other Race and Two or More Races on the 2010 Census form.

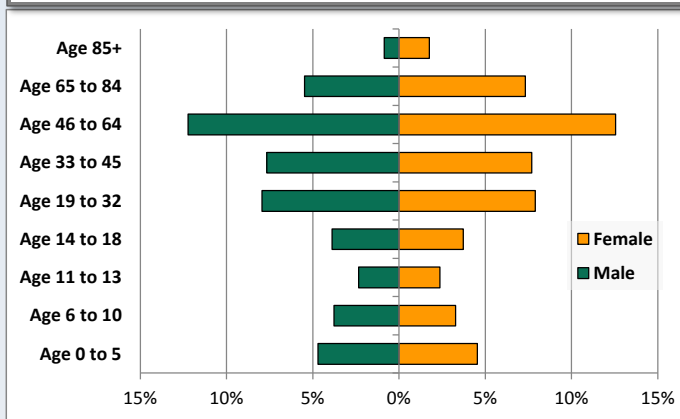
<sup>2</sup> People of Hispanic origin may be of any race.

# Demographic Profile

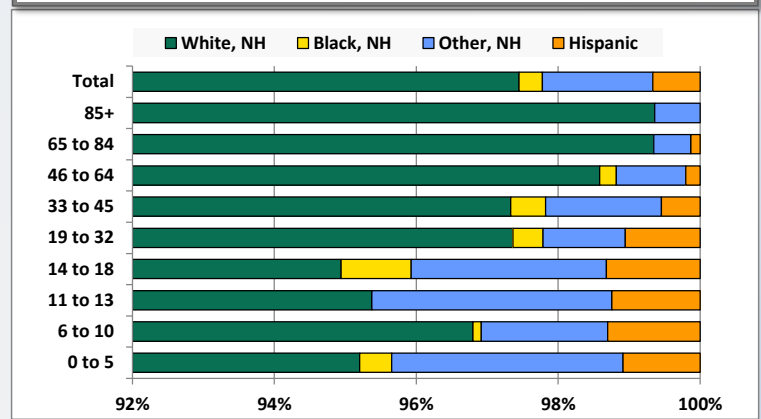
Corry Public Library

Key Indicators		
	2000	2010
<b>Population Growth</b>		
Total Population	12,270	11,963
10-Year Growth	N/A	-2.5%
<b>Diversity</b>		
White Alone, Non-Hispanic	98.2%	97.5%
Black Alone, Non-Hispanic	0.2%	0.3%
Other Race Alone, Non-Hispanic	1.0%	1.6%
Percent Hispanic	0.6%	0.7%
<b>Aging</b>		
Percent 65 Years and Over	14.8%	15.4%
<b>Households</b>		
Percent Married Couple with Own Children	24.8%	19.7%
Percent Living Alone	24.3%	25.1%

Population by Library-Defined Age Group, 2010



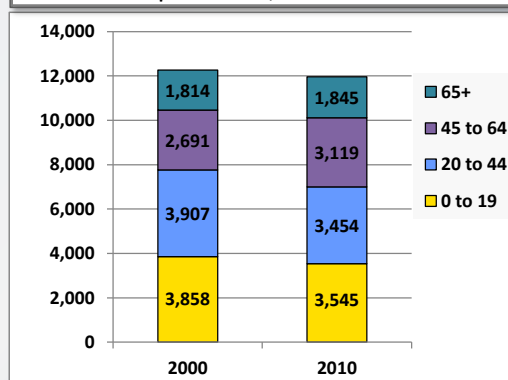
Race/Ethnicity by Library-Defined Age Group, 2010



Population Growth by Library-Defined Age Group, 2000 to 2010

Age Group	2010	Change	
		Numeric	Percent
Total	11,963	-307	-2.5%
85+	313	68	27.8%
65 to 84	1,532	-37	-2.4%
46 to 64	2,966	454	18.1%
33 to 45	1,837	-386	-17.4%
19 to 32	1,896	-107	-5.3%
14 to 18	909	-104	-10.3%
11 to 13	562	-20	-3.4%
6 to 10	843	-186	-18.1%
0 to 5	1,105	11	1.0%

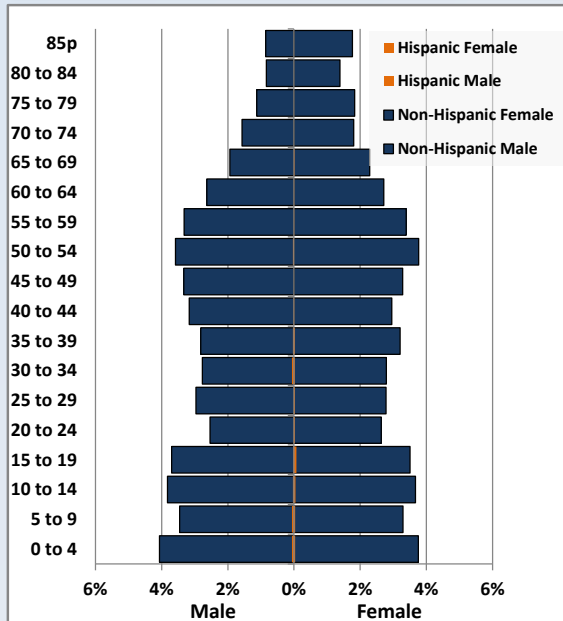
Population Total, 2000 and 2010



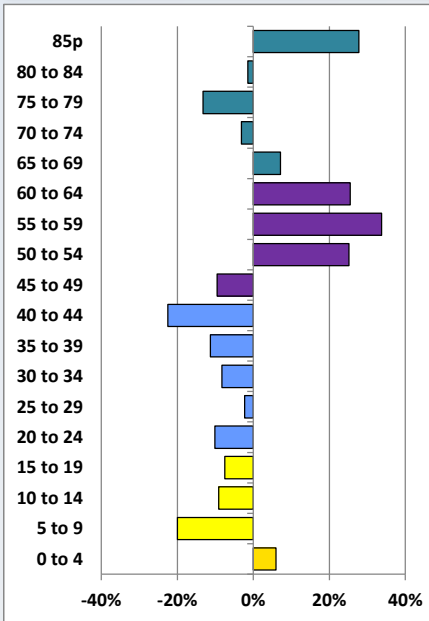
# Demographic Profile

Corry Public Library

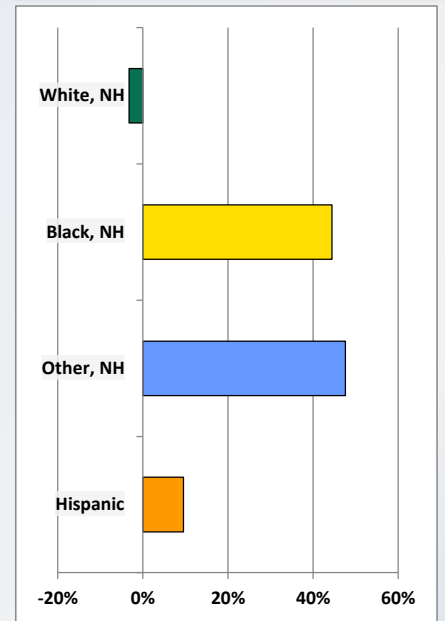
Population by 5-Year Age Cohorts



Pop Change by Age, 2000 to 2010

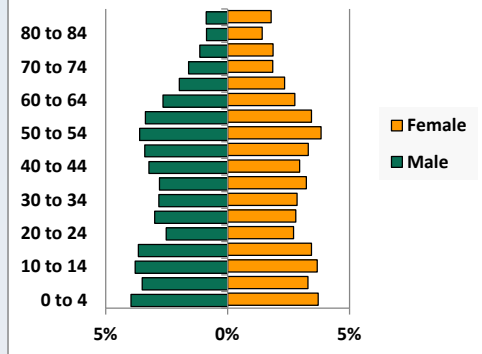


Pop Change by Race/Ethnicity, 2000 to 2010

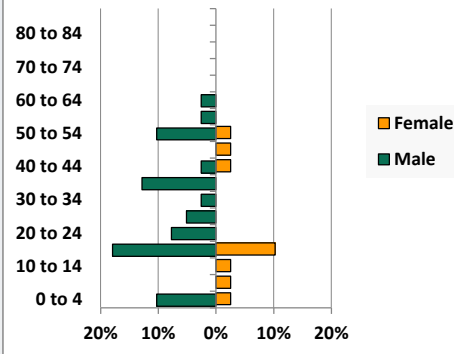


Population by Age, Race and Ethnicity 2010

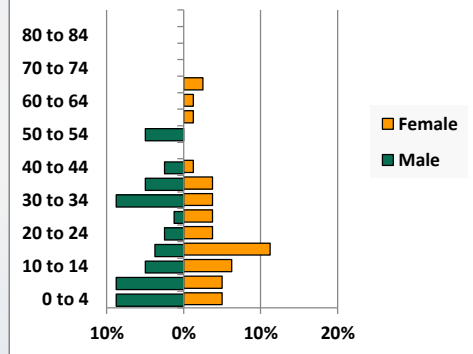
White, Not Hispanic



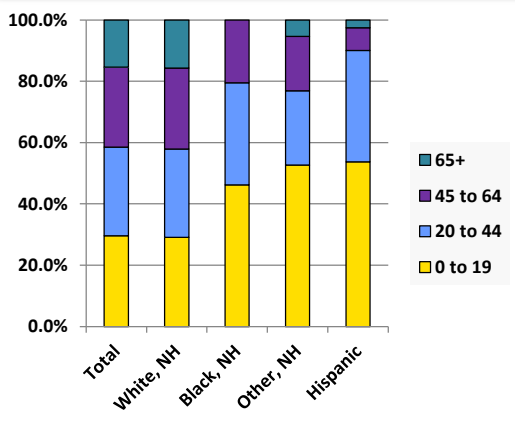
Black, Non-Hispanic



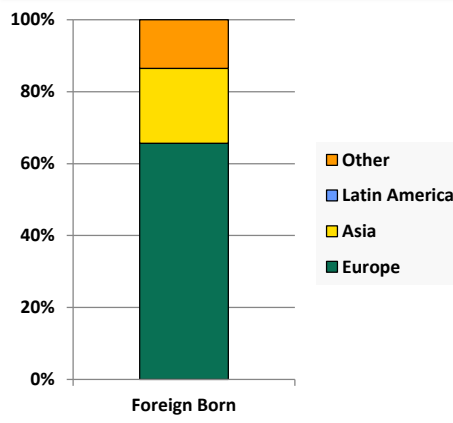
Hispanic



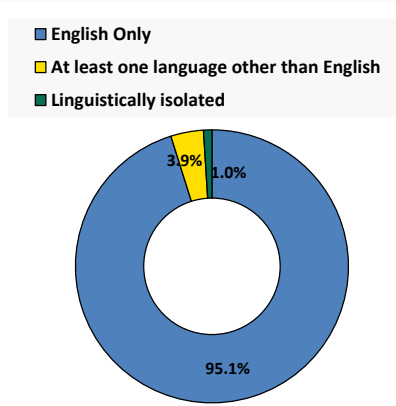
Age by Race and Ethnicity, 2010



Foreign Born, 2010



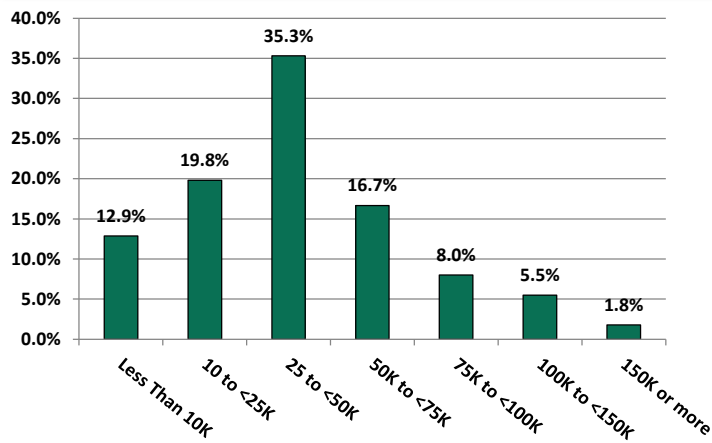
Household Language, 2010



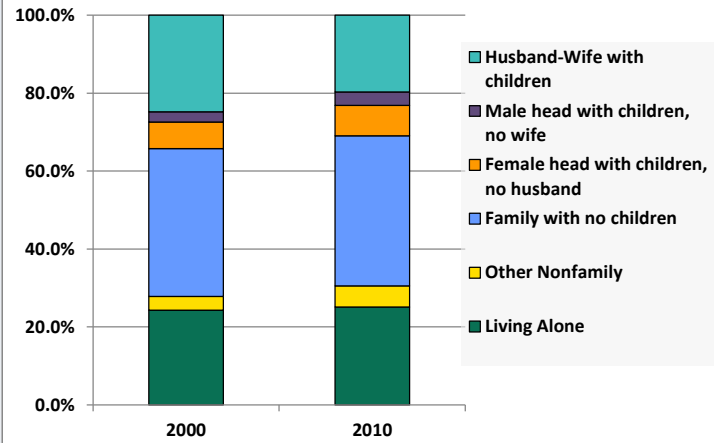
# Demographic Profile

Corry Public Library

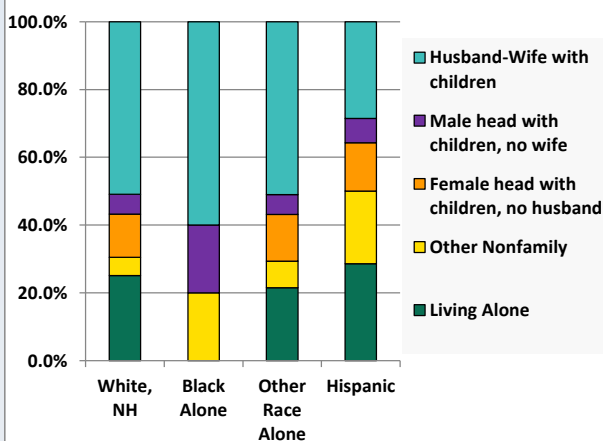
Household Income Distribution, 2008-2012



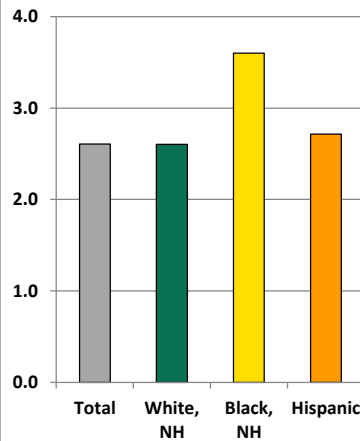
Household Type, 2000 and 2010



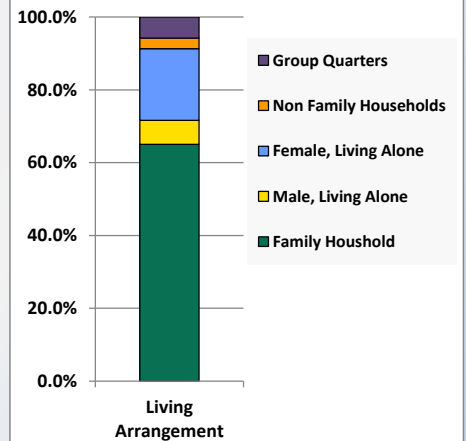
Household Type by Race/Ethnicity, 2010



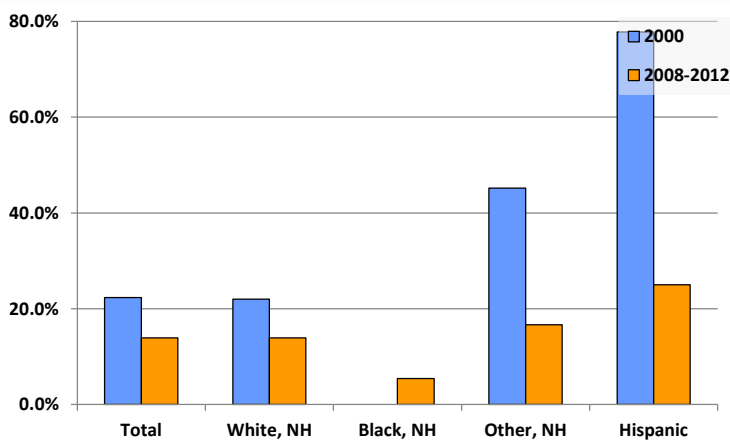
Average Household Size, 2010



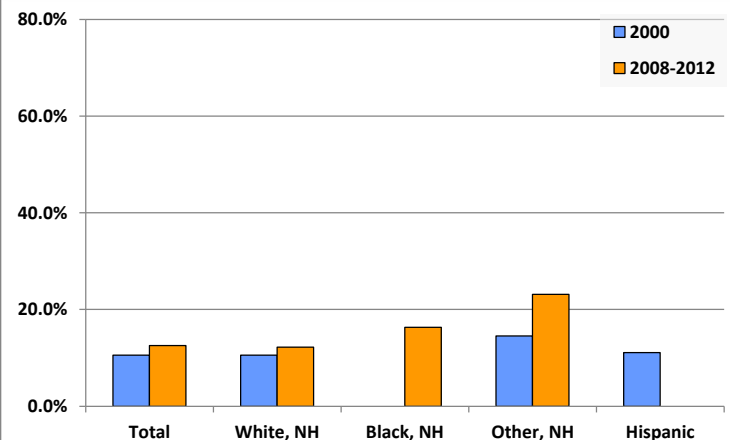
Living Arrangements 65+, 2008-2012



Percent of Adults that Did Not Complete High School



Percent of Adults Who Attained a Bachelor's Degree or Higher



# Reference Data

## Corry Public Library

					Detail for Other, Non-Hispanic					
	Total Population	White, Non- Hispanic	Black, Non- Hispanic	Other, Non- Hispanic	AIAN	Asian	NHOPI	Some Other	Two or More	Hispanic or
								Race	Races	Latino
A. Total Population										
2000 Total	12,270	12,044	27	126	19	27	1	1	78	73
2000 pct of Total	100.0%	98.2%	0.2%	1.0%	0.2%	0.2%	0.0%	0.0%	0.6%	0.6%
2010 Total	11,963	11,658	39	186	22	27	3	0	134	80
2010 pct of Total	100.0%	97.5%	0.3%	1.6%	0.2%	0.2%	0.0%	0.0%	1.1%	0.7%
B. Population by Major Age Groups by Race and Ethnicity										
2000										
0-19	3,858	3,751	16	55	7	9	0	1	38	36
20-64	6,598	6,498	10	57	10	18	1	0	28	33
65+	1,814	1,795	1	14	2	0	0	0	12	4
85+	245	244	0	1	0	0	0	0	1	0
2010										
0-19	3,545	3,386	18	98	7	8	1	0	82	43
20-64	6,573	6,439	21	78	14	14	2	0	48	35
65+	1,845	1,833	0	10	1	5	0	0	4	2
85+	313	311	0	2	0	1	0	0	1	0
C. Age Mix for Each Racial and Ethnic Group										
2000										
0-19	31.4%	31.1%	59.3%	43.7%	36.8%	33.3%	0.0%	100.0%	48.7%	49.3%
20-64	53.8%	54.0%	37.0%	45.2%	52.6%	66.7%	100.0%	0.0%	35.9%	45.2%
65+	14.8%	14.9%	3.7%	11.1%	10.5%	0.0%	0.0%	0.0%	15.4%	5.5%
85+	2.0%	2.0%	0.0%	0.8%	0.0%	0.0%	0.0%	0.0%	1.3%	0.0%
2010										
0-19	29.6%	29.0%	46.2%	52.7%	31.8%	29.6%	33.3%	0.0%	61.2%	53.8%
20-64	54.9%	55.2%	53.8%	41.9%	63.6%	51.9%	66.7%	0.0%	35.8%	43.8%
65+	15.4%	15.7%	0.0%	5.4%	4.5%	18.5%	0.0%	0.0%	3.0%	2.5%
85+	2.6%	2.7%	0.0%	1.1%	0.0%	3.7%	0.0%	0.0%	0.7%	0.0%
D. Racial and Ethnic Composition of Each Age Group										
2000										
0-19	100.0%	97.2%	0.4%	1.4%	0.2%	0.2%	0.0%	0.0%	1.0%	0.9%
20-64	100.0%	98.5%	0.2%	0.9%	0.2%	0.3%	0.0%	0.0%	0.4%	0.5%
65+	100.0%	99.0%	0.1%	0.8%	0.1%	0.0%	0.0%	0.0%	0.7%	0.2%
85+	100.0%	99.6%	0.0%	0.4%	0.0%	0.0%	0.0%	0.0%	0.4%	0.0%
2010										
0-19	100.0%	95.5%	0.5%	2.8%	0.2%	0.2%	0.0%	0.0%	2.3%	1.2%
20-64	100.0%	98.0%	0.3%	1.2%	0.2%	0.2%	0.0%	0.0%	0.7%	0.5%
65+	100.0%	99.3%	0.0%	0.5%	0.1%	0.3%	0.0%	0.0%	0.2%	0.1%
85+	100.0%	99.4%	0.0%	0.6%	0.0%	0.3%	0.0%	0.0%	0.3%	0.0%
E. Population Growth										
2000-2010, Change										
0-19	-313	-365	2	43	0	-1	1	-1	44	7
20-64	-25	-59	11	21	4	-4	1	0	20	2
65+	31	38	-1	-4	-1	5	0	0	-8	-2
85+	68	67	0	1	0	1	0	0	0	0
Total	-307	-386	12	60	3	0	2	-1	56	7
2000-2010, Pct Change										
0-19	-8.1%	-9.7%	12.5%	78.2%	0.0%	-11.1%	0.0%	-100.0%	115.8%	19.4%
20-64	-0.4%	-0.9%	110.0%	36.8%	40.0%	-22.2%	100.0%	0.0%	71.4%	6.1%
65+	1.7%	2.1%	-100.0%	-28.6%	-50.0%	0.0%	0.0%	0.0%	-66.7%	-50.0%
85+	27.8%	27.5%	0.0%	100.0%	0.0%	0.0%	0.0%	0.0%	0.0%	0.0%
Total	-2.5%	-3.2%	44.4%	47.6%	15.8%	0.0%	200.0%	-100.0%	71.8%	9.6%

Source: Decennial Census 2010, 2000, American Community Survey 2008-2012

Prepared for the Pennsylvania State Library by The Pennsylvania State Data Center, 9/2014

# Reference Data

## Corry Public Library

	Total Population	White, Non- Hispanic	Black, Non- Hispanic	Other, Non- Hispanic	Detail for Other, Non-Hispanic					Hispanic or Latino
					AIAN	Asian	NHOPI	Some Other	Two or More	
								Race	Races	
F. Population by Library-Defined Age Groups, 2010										
0-5	1,105	1,052	5	36	1	2	0	0	33	12
6-10	843	816	1	15	1	3	1	0	10	11
11-13	562	536	0	19	0	0	0	0	19	7
14-18	909	863	9	25	3	3	0	0	19	12
19-32	1,896	1,846	8	22	6	1	0	0	15	20
33-45	1,837	1,788	9	30	3	8	1	0	18	10
46-64	2,966	2,924	7	29	7	5	1	0	16	6
65-84	1,532	1,522	0	8	1	4	0	0	3	2
85+	313	311	0	2	0	1	0	0	1	0
Total	11,963	11,658	39	186	22	27	3	0	134	80
G. Population by 5-Year Age Cohorts, 2010										
0-4	946	895	5	35	1	1	0	0	33	11
5-9	819	793	1	14	1	2	1	0	10	11
10-14	906	870	1	26	1	2	0	0	23	9
15-19	874	828	11	23	4	3	0	0	16	12
20-24	624	609	3	7	3	0	0	0	4	5
25-29	692	675	2	11	1	1	0	0	9	4
30-34	675	660	1	4	0	1	0	0	3	10
35-39	728	702	5	14	1	5	0	0	8	7
40-44	735	721	2	9	1	2	1	0	5	3
45-49	791	781	1	9	2	0	0	0	7	0
50-54	884	867	5	8	1	2	1	0	4	4
55-59	804	795	1	7	4	1	0	0	2	1
60-64	640	629	1	9	1	2	0	0	6	1
65-69	508	503	0	3	0	2	0	0	1	2
70-74	404	402	0	2	0	1	0	0	1	0
75-79	354	351	0	3	1	1	0	0	1	0
80-84	266	266	0	0	0	0	0	0	0	0
85-89	201	199	0	2	0	1	0	0	1	0
90-94	87	87	0	0	0	0	0	0	0	0
95-99	23	23	0	0	0	0	0	0	0	0
100+	2	2	0	0	0	0	0	0	0	0
Total	11,963	11,658	39	186	22	27	3	0	134	80

Source: Decennial Census 2010, 2000, American Community Survey 2008-2012

Prepared for the Pennsylvania State Library by The Pennsylvania State Data Center, 9/2014

## H. Income Distribution, 2008-2012

Range (in thousands)	Households	Pct of Total
<\$10K	585	12.9%
\$10K to <\$25K	900	19.8%
\$25K to <\$50K	1,605	35.3%
\$50K to <\$75K	757	16.7%
\$75K to <\$100K	364	8.0%
\$100K to <\$150K	250	5.5%
\$150K+	82	1.8%

## I. Household Type, 2010

Household Type	2000	2000pct	2010	2010pct
Total Households	4,491	100.0%	4,537	100.0%
Family Households	3,240	72.1%	3,151	69.5%
Husband-wife, no children w/children	1,113	24.8%	892	19.7%
Female head, no husband, w/ children	308	6.9%	353	7.8%
Male head, no wife, w/ children	118	2.6%	158	3.5%
Without children	1,701	37.9%	1,748	38.5%
Nonfamily households	1,251	27.9%	1,386	30.5%
Living alone	1,091	24.3%	1,140	25.1%
Other nonfamily	160	3.6%	246	5.4%

## J. Household Type by Race and Ethnicity, 2008-2012

Household Type	White, NH	Black, NH	Other, NH	Hispanic
Total Households	4,470	5	51	14
Husband wife family	50.9%	60.0%	51.0%	28.6%
Family with male head, no wife	5.8%	20.0%	5.9%	7.1%
family with female head, no husband	12.8%	0.0%	13.7%	14.3%
Living alone	25.2%	0.0%	21.6%	28.6%
Other nonfamily	5.3%	20.0%	7.8%	21.4%

## K. Poverty, 2008-2012

Families	Poverty	PA
All families	18.9%	9.1%
Families w/ related children	34.0%	15.3%
Female householder, no husband present	50.7%	28.8%
Female householder, no husband present, w/ related children	65.5%	39.2%
All people	22.2%	13.1%
Under 18 years	34.4%	18.4%
18 to 64 years	20.1%	12.3%
65 years and over	8.4%	8.4%

## L. Educational Attainment by Race and Ethnicity, 2008-2012

Education Level	White, NH	Black	Other	Hispanic	Total
Population 25 years and over	7,470	92	186	8	7,752
Less than high school	13.9%	5.4%	17%	25.0%	13.9%
High school graduate (includes equivalency	48.1%	78.3%	26%	50.0%	47.9%
Some college or associates degree	25.8%	0.0%	34%	25.0%	25.7%
Bachelors degree or higher	12.2%	16.3%	23%	0.0%	12.5%

## M. Occupation, 2008-2012

Occupation	Estimate	Percent
Civilian population age 16 years and over	4,679	100.0%
Management, professional, and related occupations	1,096	23.4%
Service occupations	779	16.6%
Sales and office occupations	1,019	21.8%
Farming, fishing, and forestry occupations	92	2.0%
Construction, extraction, maintenance, and repair occupations	438	9.4%
Production, transportation, and material moving occupations	1,255	26.8%

## N. Class of Worker, 2008-2012

Occupation	Estimate	Percent
Civilian population age 16 years and over	4,679	100.0%
Private, for profit, wage and salary employee	3,310	70.7%
Private, not for profit, wage and salary employee	380	8.1%
Private, for profit, wage and salary self-employed in own business	135	2.9%
Government workers	445	9.5%
Self-employed in own not incorporated business	364	7.8%
Unpaid family workers in family business	45	1.0%