

Demographic Profile Crafton Public Library

Population Growth: The total population of the Crafton Public Library service area decreased by -11.3 percent over the past decade to 5,951; this decline rate was lower than the statewide rate of 3.4 percent.

Age and Sex: In 2010, the Crafton Public Library service area had a total population of 5,951 - 2,827 males (47.5 percent) and 3,124 females (52.5 percent). The age structure of the population in 2010 was as follows: 20.9 percent of the population was under 20 years old, 64.9 percent was 20 to 64 years old and 14.1 percent was 65 years or older.

Race and Ethnicity: For people reporting one race alone, not of Hispanic ethnicity, 90.8 percent were White; 4.6 percent were Black or African American; 3.2 percent were Other Race Alone.¹ A total of 86 or 1.4 percent of the population were Hispanic.²

Households: In 2010, there were 2,788 households in the Crafton Public Library service area. The average household size was 2.13 people. Families made up 52.0 percent of the households. This figure includes both families with (20.2 percent) and without (31.8 percent) children. Of families with children less than 18 years old, 13.0 percent were married-couple families, 5.4 percent were female householder families with no husband present, and the remaining (1.8 percent) were male-headed households with no wife present.

Education: The educational attainment of the population 25 years and over was higher in the Crafton Public Library service area than in Pennsylvania. During the period 2008-2012, 30.8 percent of residents had earned a Bachelor's degree or higher, compared with 27.0 percent statewide. A total of 180 or 4.2 percent had not completed high school, compared with 11.7 percent for the commonwealth as a whole.

Income and Poverty: Households with incomes of \$25,000 to \$49,999 (31.7 percent) made up the largest percent of households in the Crafton Public Library service area in 2008-2012. For comparison, 24.4 percent of commonwealth households were in this range during the period.

In 2008-2012, the overall poverty rate for the Crafton Public Library service area was lower than Pennsylvania (6.1 percent compared to 13.1 percent). The poverty rate for the population under 18 years of age was 4.0 percent, compared with 6.2 percent of people 18 to 64 years and 8.6 percent for those aged 65 years and over. A total of 51 or 3.4 percent of all families had incomes below poverty level. In 2008-2012, 4.3 percent of families with related children and 18.5 percent of families with a female householder and no husband with related children present had incomes below the poverty level.

Class of Worker and Occupation: In 2008-2012, 86.8 percent of the workforce was private wage and salary workers; 9.1 percent were federal, state, or local government workers; and 3.8 percent were self-employed in their own (not incorporated) business.

The top occupation group for the civilian employed population 16 years and over in the Crafton Public Library service area in 2008-2012 was Management, business, science, and arts (40.6 percent).

¹ Other race includes those who identified themselves as American Indian/Alaska Native, Asian, Native Hawaiian/Other Pacific Islander, Some Other Race and Two or More Races on the 2010 Census form.

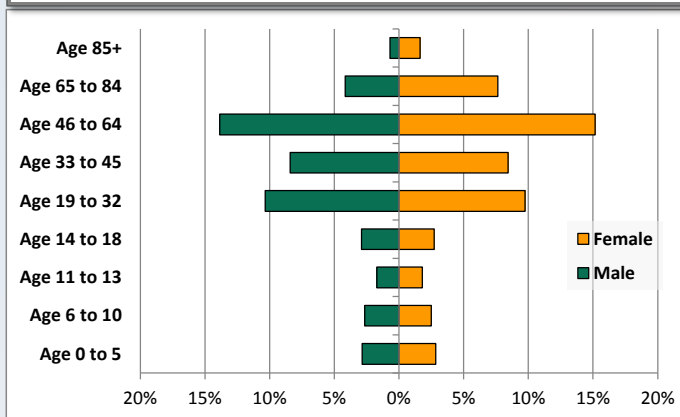
² People of Hispanic origin may be of any race.

Demographic Profile

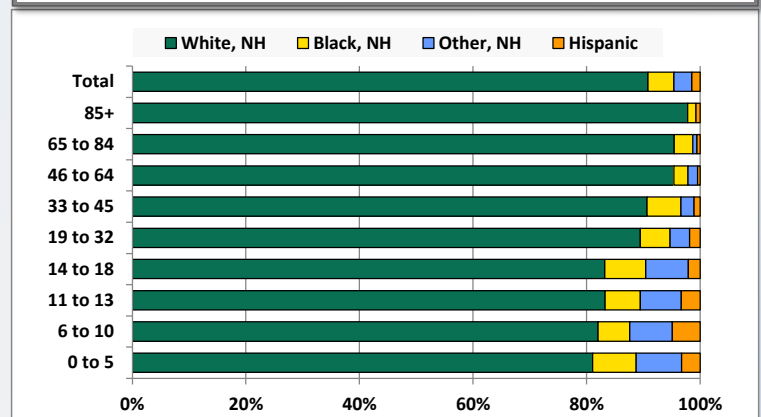
Crafton Public Library

Key Indicators		
	2000	2010
Population Growth		
Total Population	6,706	5,951
10-Year Growth	N/A	-11.3%
Diversity		
White Alone, Non-Hispanic	95.1%	90.8%
Black Alone, Non-Hispanic	2.7%	4.6%
Other Race Alone, Non-Hispanic	1.6%	3.2%
Percent Hispanic	0.6%	1.4%
Aging		
Percent 65 Years and Over	14.8%	14.1%
Households		
Percent Married Couple with Own Children	16.8%	13.0%
Percent Living Alone	40.2%	39.8%

Population by Library-Defined Age Group, 2010



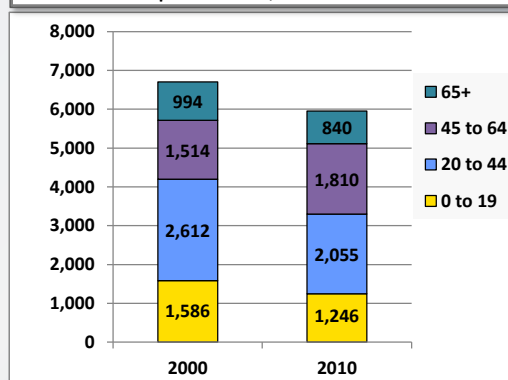
Race/Ethnicity by Library-Defined Age Group, 2010



Population Growth by Library-Defined Age Group, 2000 to 2010

Age Group	2010	Change	
		Numeric	Percent
Total	5,951	-755	-11.3%
85+	138	6	4.5%
65 to 84	702	-160	-18.6%
46 to 64	1,726	355	25.9%
33 to 45	1,003	-463	-31.6%
19 to 32	1,195	-165	-12.1%
14 to 18	334	-99	-22.9%
11 to 13	209	-52	-19.9%
6 to 10	306	-81	-20.9%
0 to 5	338	-96	-22.1%

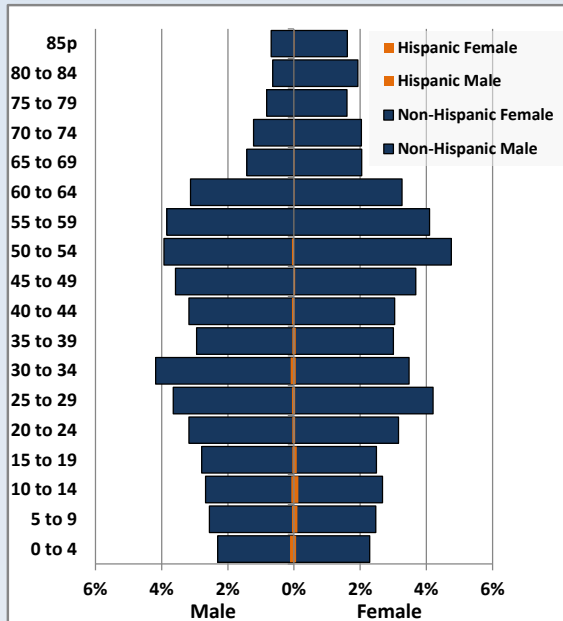
Population Total, 2000 and 2010



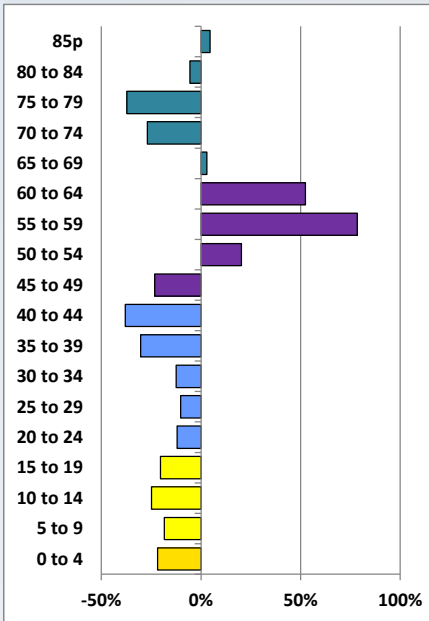
Demographic Profile

Crafton Public Library

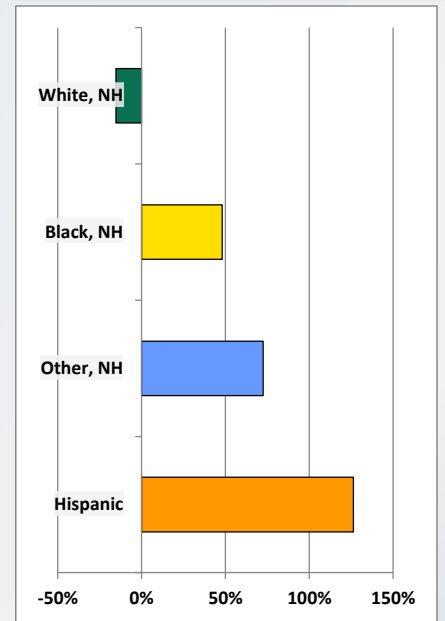
Population by 5-Year Age Cohorts



Pop Change by Age, 2000 to 2010

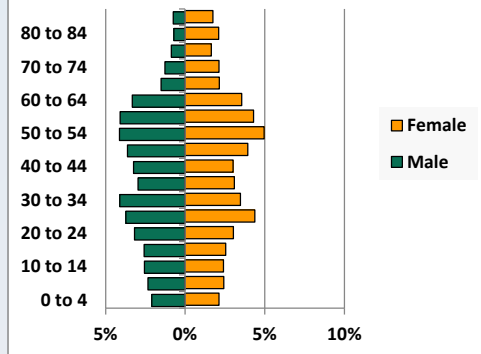


Pop Change by Race/Ethnicity, 2000 to 2010

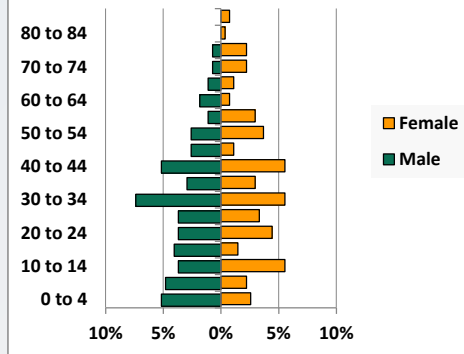


Population by Age, Race and Ethnicity 2010

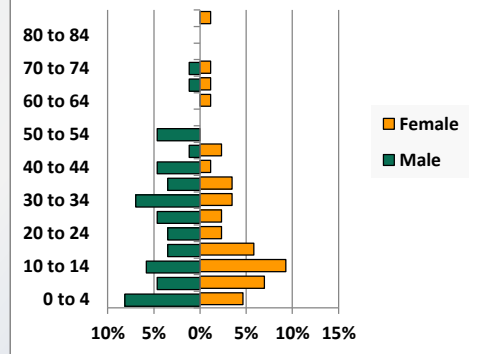
White, Not Hispanic



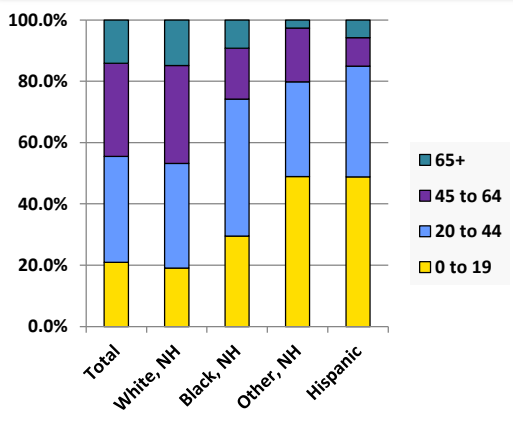
Black, Non-Hispanic



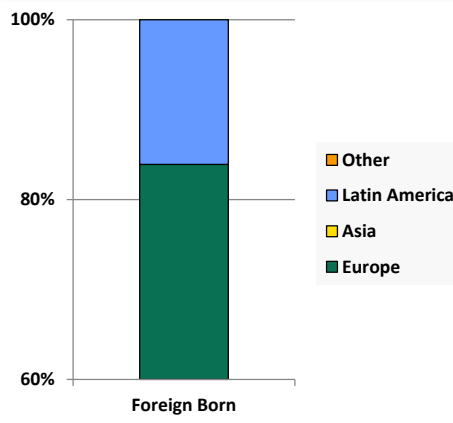
Hispanic



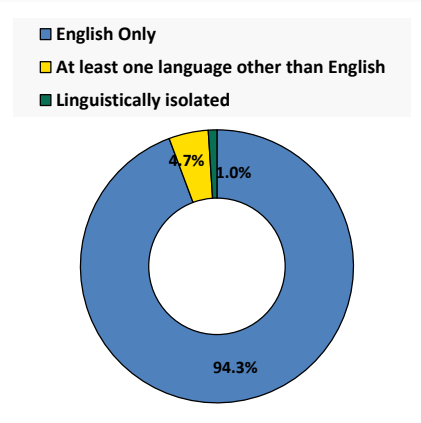
Age by Race and Ethnicity, 2010



Foreign Born, 2010



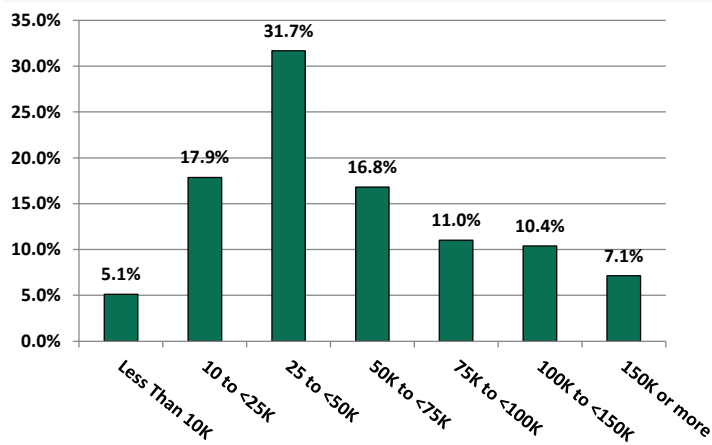
Household Language, 2010



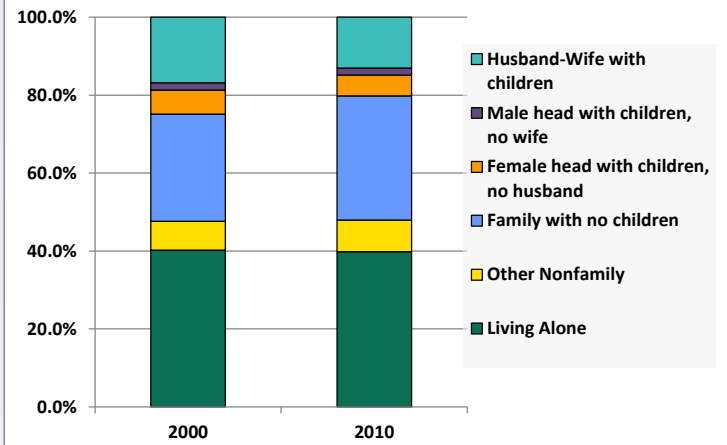
Demographic Profile

Crafton Public Library

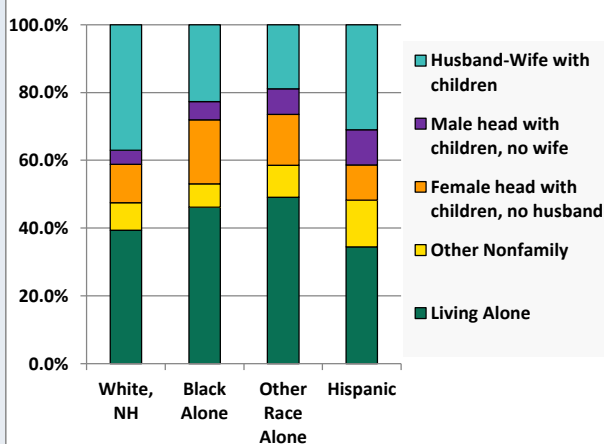
Household Income Distribution, 2008-2012



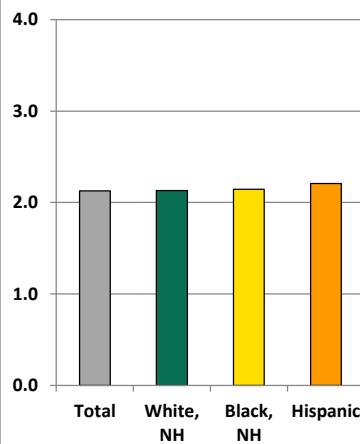
Household Type, 2000 and 2010



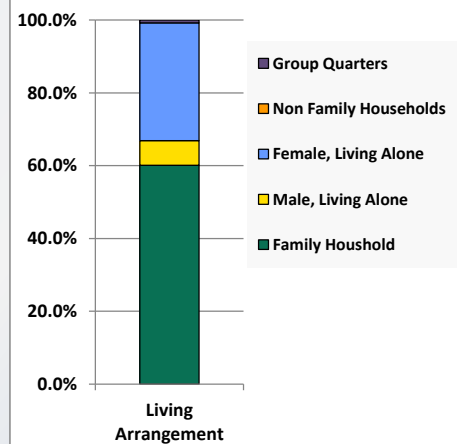
Household Type by Race/Ethnicity, 2010



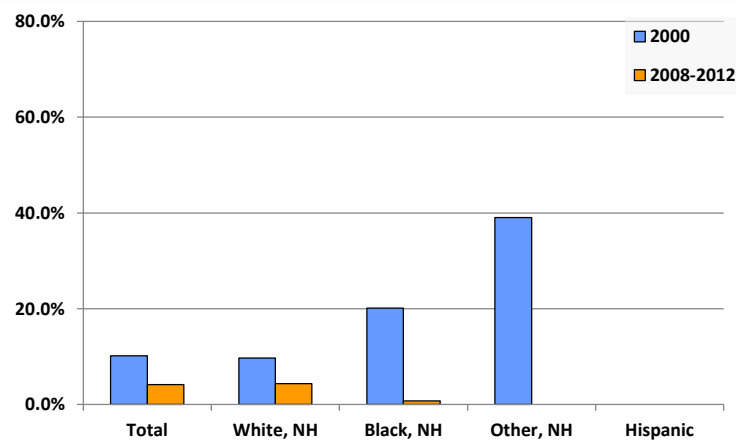
Average Household Size, 2010



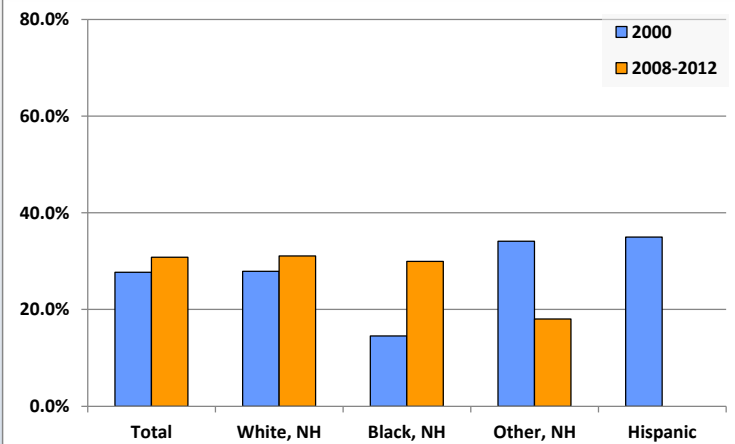
Living Arrangements 65+, 2008-2012



Percent of Adults that Did Not Complete High School



Percent of Adults Who Attained a Bachelor's Degree or Higher



Reference Data

Crafton Public Library

	Total Population	White, Non- Hispanic	Black, Non- Hispanic	Other, Non- Hispanic	Detail for Other, Non-Hispanic					
					AIAN	Asian	NHOPI	Some Other Race	Two or More Races	Hispanic or Latino
A. Total Population										
2000 Total	6,706	6,376	183	109	7	40	5	7	50	38
2000 pct of Total	100.0%	95.1%	2.7%	1.6%	0.1%	0.6%	0.1%	0.1%	0.7%	0.6%
2010 Total	5,951	5,406	271	188	4	45	2	3	134	86
2010 pct of Total	100.0%	90.8%	4.6%	3.2%	0.1%	0.8%	0.0%	0.1%	2.3%	1.4%
B. Population by Major Age Groups by Race and Ethnicity										
2000										
0-19	1,586	1,461	56	54	4	16	1	6	27	15
20-64	4,126	3,936	116	52	3	23	4	1	21	22
65+	994	979	11	3	0	1	0	0	2	1
85+	132	128	4	0	0	0	0	0	0	0
2010										
0-19	1,246	1,032	80	92	1	8	0	2	81	42
20-64	3,865	3,569	166	91	3	35	2	1	50	39
65+	840	805	25	5	0	2	0	0	3	5
85+	138	135	2	0	0	0	0	0	0	1
C. Age Mix for Each Racial and Ethnic Group										
2000										
0-19	23.7%	22.9%	30.6%	49.5%	57.1%	40.0%	20.0%	85.7%	54.0%	39.5%
20-64	61.5%	61.7%	63.4%	47.7%	42.9%	57.5%	80.0%	14.3%	42.0%	57.9%
65+	14.8%	15.4%	6.0%	2.8%	0.0%	2.5%	0.0%	0.0%	4.0%	2.6%
85+	2.0%	2.0%	2.2%	0.0%	0.0%	0.0%	0.0%	0.0%	0.0%	0.0%
2010										
0-19	20.9%	19.1%	29.5%	48.9%	25.0%	17.8%	0.0%	66.7%	60.4%	48.8%
20-64	64.9%	66.0%	61.3%	48.4%	75.0%	77.8%	100.0%	33.3%	37.3%	45.3%
65+	14.1%	14.9%	9.2%	2.7%	0.0%	4.4%	0.0%	0.0%	2.2%	5.8%
85+	2.3%	2.5%	0.7%	0.0%	0.0%	0.0%	0.0%	0.0%	0.0%	1.2%
D. Racial and Ethnic Composition of Each Age Group										
2000										
0-19	100.0%	92.1%	3.5%	3.4%	0.3%	1.0%	0.1%	0.4%	1.7%	0.9%
20-64	100.0%	95.4%	2.8%	1.3%	0.1%	0.6%	0.1%	0.0%	0.5%	0.5%
65+	100.0%	98.5%	1.1%	0.3%	0.0%	0.1%	0.0%	0.0%	0.2%	0.1%
85+	100.0%	97.0%	3.0%	0.0%	0.0%	0.0%	0.0%	0.0%	0.0%	0.0%
2010										
0-19	100.0%	82.8%	6.4%	7.4%	0.1%	0.6%	0.0%	0.2%	6.5%	3.4%
20-64	100.0%	92.3%	4.3%	2.4%	0.1%	0.9%	0.1%	0.0%	1.3%	1.0%
65+	100.0%	95.8%	3.0%	0.6%	0.0%	0.2%	0.0%	0.0%	0.4%	0.6%
85+	100.0%	97.8%	1.4%	0.0%	0.0%	0.0%	0.0%	0.0%	0.0%	0.7%
E. Population Growth										
2000-2010, Change										
0-19	-340	-429	24	38	-3	-8	-1	-4	54	27
20-64	-261	-367	50	39	0	12	-2	0	29	17
65+	-154	-174	14	2	0	1	0	0	1	4
85+	6	7	-2	0	0	0	0	0	0	1
Total	-755	-970	88	79	-3	5	-3	-4	84	48
2000-2010, Pct Change										
0-19	-21.4%	-29.4%	42.9%	70.4%	-75.0%	-50.0%	-100.0%	-66.7%	200.0%	180.0%
20-64	-6.3%	-9.3%	43.1%	75.0%	0.0%	52.2%	-50.0%	0.0%	138.1%	77.3%
65+	-15.5%	-17.8%	127.3%	66.7%	0.0%	100.0%	0.0%	0.0%	50.0%	400.0%
85+	4.5%	5.5%	-50.0%	0.0%	0.0%	0.0%	0.0%	0.0%	0.0%	0.0%
Total	-11.3%	-15.2%	48.1%	72.5%	-42.9%	12.5%	-60.0%	-57.1%	168.0%	126.3%

Source: Decennial Census 2010, 2000, American Community Survey 2008-2012

Prepared for the Pennsylvania State Library by The Pennsylvania State Data Center, 9/2014

Reference Data

Crafton Public Library

	Total Population	White, Non- Hispanic	Black, Non- Hispanic	Other, Non- Hispanic	Detail for Other, Non-Hispanic					Hispanic or Latino
					AIAN	Asian	NHOPI	Some Other	Two or More	
								Race	Races	
F. Population by Library-Defined Age Groups, 2010										
0-5	338	274	26	27	1	2	0	0	24	11
6-10	306	251	17	23	0	1	0	0	22	15
11-13	209	174	13	15	0	1	0	1	13	7
14-18	334	278	24	25	0	3	0	1	21	7
19-32	1,195	1,069	63	41	1	12	0	1	27	22
33-45	1,003	909	60	23	1	9	0	0	13	11
46-64	1,726	1,646	43	29	1	15	2	0	11	8
65-84	702	670	23	5	0	2	0	0	3	4
85+	138	135	2	0	0	0	0	0	0	1
Total	5,951	5,406	271	188	4	45	2	3	134	86
G. Population by 5-Year Age Cohorts, 2010										
0-4	284	229	21	23	1	2	0	0	20	11
5-9	309	257	19	23	0	0	0	0	23	10
10-14	331	269	25	24	0	2	0	1	21	13
15-19	322	277	15	22	0	4	0	1	17	8
20-24	382	335	22	20	0	7	0	0	13	5
25-29	473	437	19	11	1	4	0	1	5	6
30-34	465	409	35	12	0	2	0	0	10	9
35-39	360	327	16	11	1	3	0	0	7	6
40-44	375	337	29	4	0	3	0	0	1	5
45-49	435	408	10	14	1	5	0	0	8	3
50-54	521	491	17	9	0	4	2	0	3	4
55-59	473	453	11	9	0	6	0	0	3	0
60-64	381	372	7	1	0	1	0	0	0	1
65-69	209	198	6	3	0	1	0	0	2	2
70-74	196	184	8	2	0	1	0	0	1	2
75-79	144	136	8	0	0	0	0	0	0	0
80-84	153	152	1	0	0	0	0	0	0	0
85-89	103	101	2	0	0	0	0	0	0	0
90-94	32	31	0	0	0	0	0	0	0	1
95-99	2	2	0	0	0	0	0	0	0	0
100+	1	1	0	0	0	0	0	0	0	0
Total	5,951	5,406	271	188	4	45	2	3	134	86

Source: Decennial Census 2010, 2000, American Community Survey 2008-2012

Prepared for the Pennsylvania State Library by The Pennsylvania State Data Center, 9/2014

Page 6

Reference Data

Crafton Public Library

H. Income Distribution, 2008-2012

Range (in thousands)	Households	Pct of Total
<\$10K	141	5.1%
\$10K to <\$25K	492	17.9%
\$25K to <\$50K	873	31.7%
\$50K to <\$75K	463	16.8%
\$75K to <\$100K	304	11.0%
\$100K to <\$150K	286	10.4%
\$150K+	197	7.1%

I. Household Type, 2010

Household Type	2000	2000pct	2010	2010pct
Total Households	3,079	100.0%	2,788	100.0%
Family Households	1,612	52.4%	1,451	52.0%
Husband-wife, no children w/children	517	16.8%	363	13.0%
Female head, no husband, w/ children	189	6.1%	150	5.4%
Male head, no wife, w/ children	60	1.9%	51	1.8%
Without children	846	27.5%	887	31.8%
Nonfamily households	1,467	47.6%	1,337	48.0%
Living alone	1,239	40.2%	1,110	39.8%
Other nonfamily	228	7.4%	227	8.1%

J. Household Type by Race and Ethnicity, 2008-2012

Household Type	White, NH	Black, NH	Other, NH	Hispanic
Total Households	2,584	132	53	29
Husband wife family	37.1%	22.7%	18.9%	31.0%
Family with male head, no wife	4.1%	5.3%	7.5%	10.3%
family with female head, no husband	11.3%	18.9%	15.1%	10.3%
Living alone	39.4%	46.2%	49.1%	34.5%
Other nonfamily	8.1%	6.8%	9.4%	13.8%

K. Poverty, 2008-2012

Families	Poverty	PA
All families	3.4%	9.1%
Families w/ related children	4.3%	15.3%
Female householder, no husband present	15.6%	28.8%
Female householder, no husband present, w/ related children	18.5%	39.2%
All people	6.1%	13.1%
Under 18 years	4.0%	18.4%
18 to 64 years	6.2%	12.3%
65 years and over	8.6%	8.4%

L. Educational Attainment by Race and Ethnicity, 2008-2012

Education Level	White, NH	Black	Other	Hispanic	Total
Population 25 years and over	4,095	137	72	20	4,305
Less than high school	4.4%	0.7%	0%	0.0%	4.2%
High school graduate (includes equivalency)	36.5%	0.7%	35%	60.0%	35.3%
Some college or associates degree	28.1%	68.6%	47%	40.0%	29.7%
Bachelors degree or higher	31.1%	29.9%	18%	0.0%	30.8%

M. Occupation, 2008-2012

Occupation	Estimate	Percent
Civilian population age 16 years and over	3,456	100.0%
Management, professional, and related occupations	1,402	40.6%
Service occupations	519	15.0%
Sales and office occupations	774	22.4%
Farming, fishing, and forestry occupations	0	0.0%
Construction, extraction, maintenance, and repair occupations	283	8.2%
Production, transportation, and material moving occupations	478	13.8%

N. Class of Worker, 2008-2012

Occupation	Estimate	Percent
Civilian population age 16 years and over	3,456	100.0%
Private, for profit, wage and salary employee	2,545	73.6%
Private, not for profit, wage and salary employee	415	12.0%
Private, for profit, wage and salary self-employed in own business	41	1.2%
Government workers	314	9.1%
Self-employed in own not incorporated business	132	3.8%
Unpaid family workers in family business	9	0.3%