

Demographic Profile Dillsburg Area Public Library

Population Growth: The total population of the Dillsburg Area Public Library service area increased by 12.9 percent over the past decade to 21,073; this growth rate was higher than the statewide rate of 3.4 percent.

Age and Sex: In 2010, the Dillsburg Area Public Library service area had a total population of 21,073 - 10,511 males (49.9 percent) and 10,562 females (50.1 percent). The age structure of the population in 2010 was as follows: 24.9 percent of the population was under 20 years old, 61.3 percent was 20 to 64 years old and 13.9 percent was 65 years or older.

Race and Ethnicity: For people reporting one race alone, not of Hispanic ethnicity, 96.2 percent were White; .6 percent were Black or African American; 1.9 percent were Other Race Alone.¹ A total of 284 or 1.3 percent of the population were Hispanic.²

Households: In 2010, there were 8,260 households in the Dillsburg Area Public Library service area. The average household size was 2.54 people. Families made up 74.7 percent of the households. This figure includes both families with (29.9 percent) and without (44.8 percent) children. Of families with children less than 18 years old, 23.7 percent were married-couple families, 4.2 percent were female householder families with no husband present, and the remaining (1.9 percent) were male-headed households with no wife present.

Education: The educational attainment of the population 25 years and over was higher in the Dillsburg Area Public Library service area than in Pennsylvania. During the period 2008-2012, 29.8 percent of residents had earned a Bachelor's degree or higher, compared with 27.0 percent statewide. A total of 1,195 or 8.1 percent had not completed high school, compared with 11.7 percent for the commonwealth as a whole.

Income and Poverty: Households with incomes of \$100,000 or More (29.4 percent) made up the largest percent of households in the Dillsburg Area Public Library service area in 2008-2012. For comparison, 20.8 percent of commonwealth households were in this range during the period.

In 2008-2012, the overall poverty rate for the Dillsburg Area Public Library service area was lower than Pennsylvania (4.2 percent compared to 13.1 percent). The poverty rate for the population under 18 years of age was 4.8 percent, compared with 3.9 percent of people 18 to 64 years and 4.8 percent for those aged 65 years and over. A total of 192 or 3.1 percent of all families had incomes below poverty level. In 2008-2012, 4.7 percent of families with related children and 15.7 percent of families with a female householder and no husband with related children present had incomes below the poverty level.

Class of Worker and Occupation: In 2008-2012, 79.6 percent of the workforce was private wage and salary workers; 12.5 percent were federal, state, or local government workers; and 7.8 percent were self-employed in their own (not incorporated) business.

The top occupation group for the civilian employed population 16 years and over in the Dillsburg Area Public Library service area in 2008-2012 was Management, business, science, and arts (34.8 percent).

¹ Other race includes those who identified themselves as American Indian/Alaska Native, Asian, Native Hawaiian/Other Pacific Islander, Some Other Race and Two or More Races on the 2010 Census form.

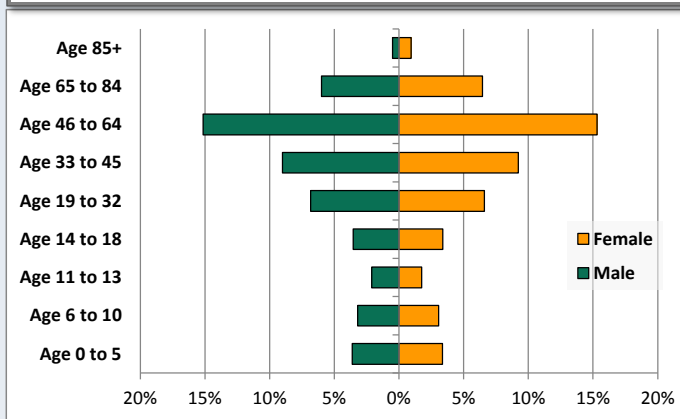
² People of Hispanic origin may be of any race.

Demographic Profile

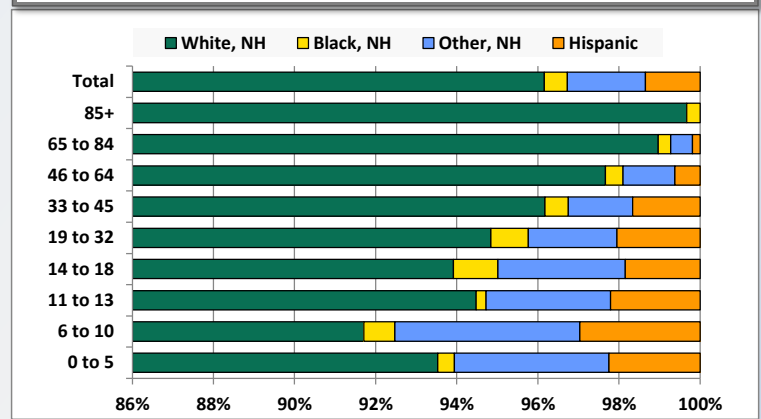
Dillsburg Area Public Library

Key Indicators		
	2000	2010
Population Growth		
Total Population	18,671	21,073
10-Year Growth	N/A	12.9%
Diversity		
White Alone, Non-Hispanic	97.7%	96.2%
Black Alone, Non-Hispanic	0.3%	0.6%
Other Race Alone, Non-Hispanic	1.3%	1.9%
Percent Hispanic	0.8%	1.3%
Aging		
Percent 65 Years and Over	10.1%	13.9%
Households		
Percent Married Couple with Own Children	29.0%	23.7%
Percent Living Alone	18.8%	20.1%

Population by Library-Defined Age Group, 2010



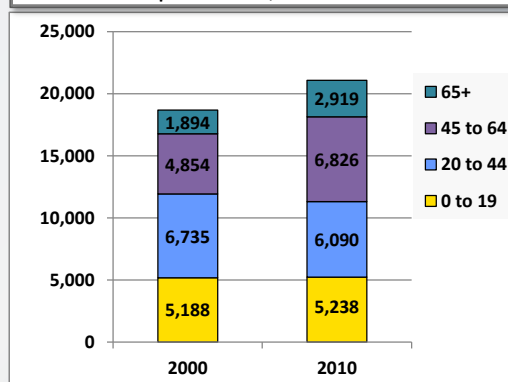
Race/Ethnicity by Library-Defined Age Group, 2010



Population Growth by Library-Defined Age Group, 2000 to 2010

Age Group	2010	Change	
		Numeric	Percent
Total	21,073	2,402	12.9%
85+	299	139	86.9%
65 to 84	2,620	886	51.1%
46 to 64	6,417	1,887	41.7%
33 to 45	3,845	-543	-12.4%
19 to 32	2,830	2	0.1%
14 to 18	1,463	191	15.0%
11 to 13	815	-102	-11.1%
6 to 10	1,315	-91	-6.5%
0 to 5	1,469	33	2.3%

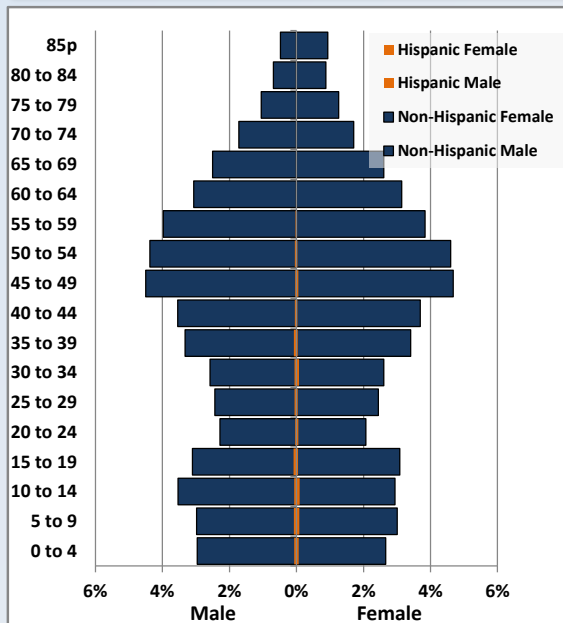
Population Total, 2000 and 2010



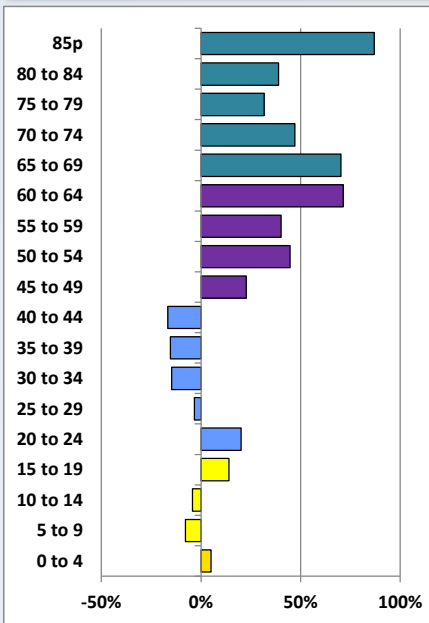
Demographic Profile

Dillsburg Area Public Library

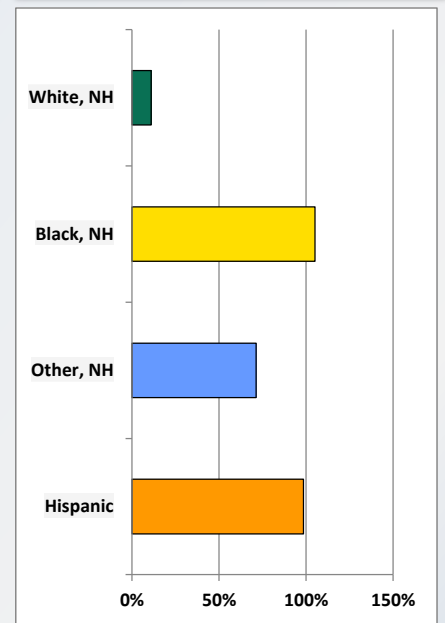
Population by 5-Year Age Cohorts



Pop Change by Age, 2000 to 2010

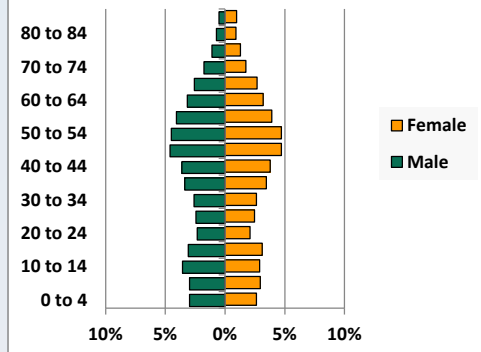


Pop Change by Race/Ethnicity, 2000 to 2010

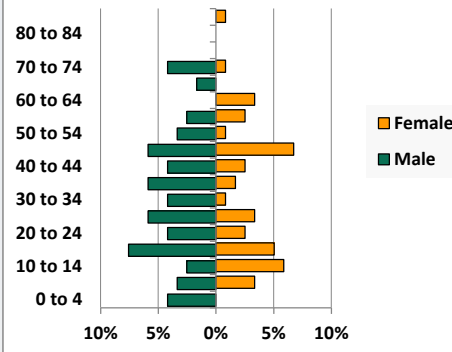


Population by Age, Race and Ethnicity 2010

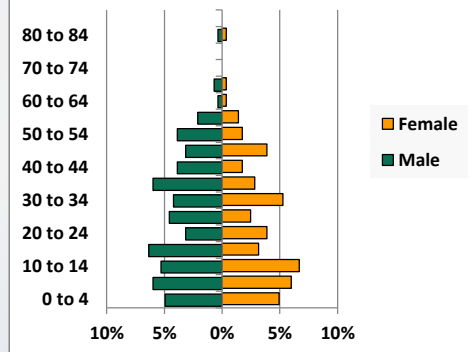
White, Not Hispanic



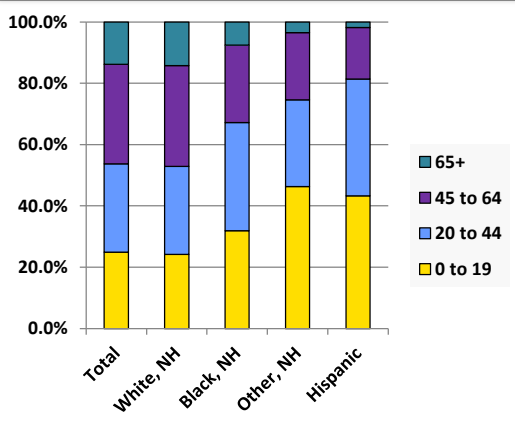
Black, Non-Hispanic



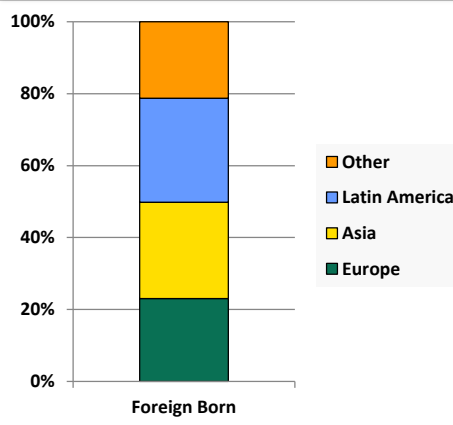
Hispanic



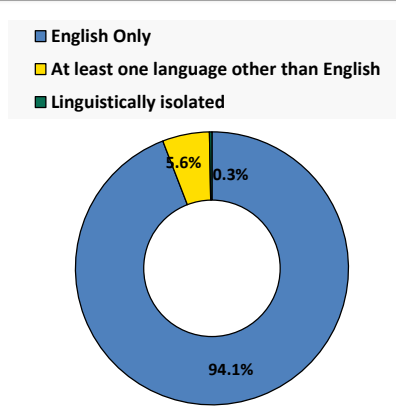
Age by Race and Ethnicity, 2010



Foreign Born, 2010



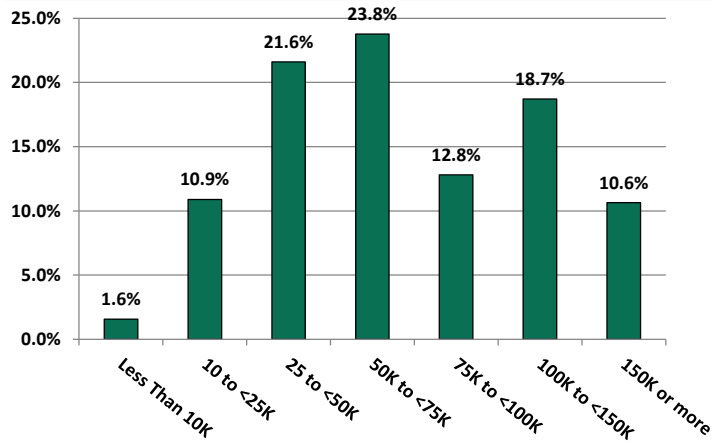
Household Language, 2010



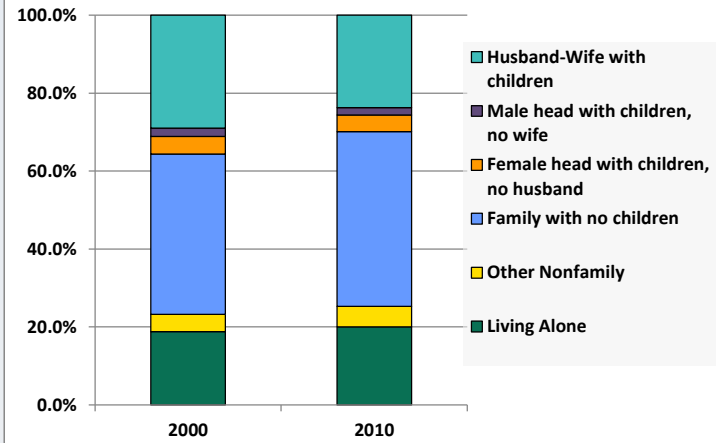
Demographic Profile

Dillsburg Area Public Library

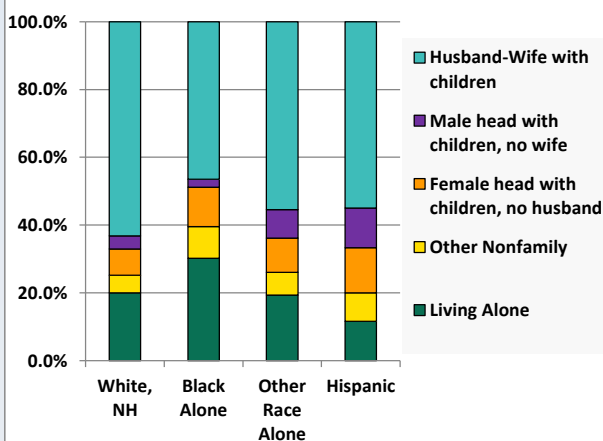
Household Income Distribution, 2008-2012



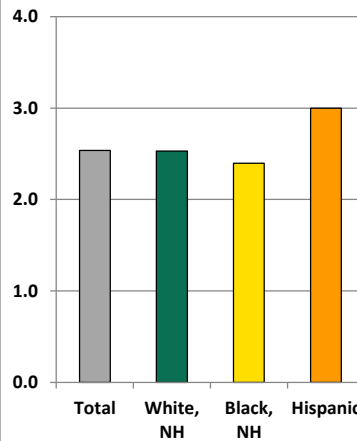
Household Type, 2000 and 2010



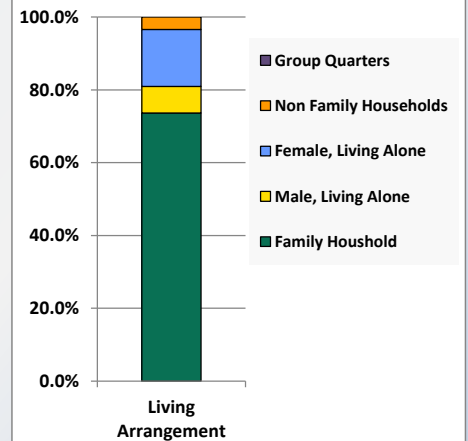
Household Type by Race/Ethnicity, 2010



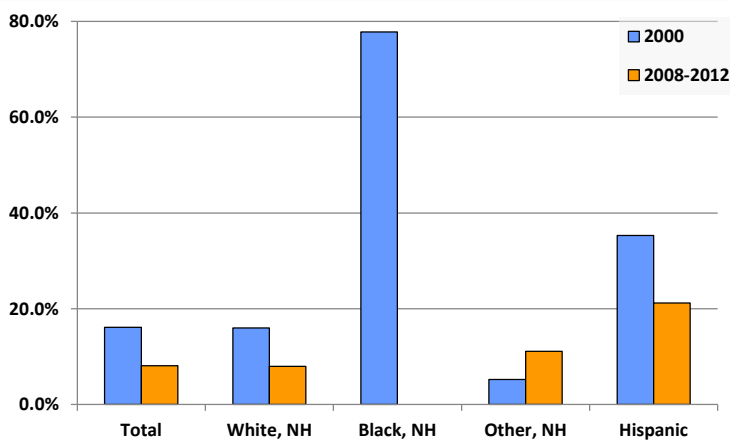
Average Household Size, 2010



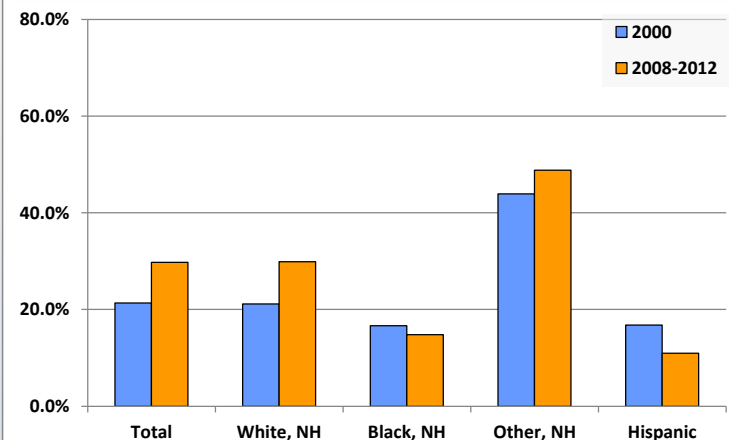
Living Arrangements 65+, 2008-2012



Percent of Adults that Did Not Complete High School



Percent of Adults Who Attained a Bachelor's Degree or Higher



Reference Data

Dillsburg Area Public Library

	Total Population	White, Non- Hispanic	Black, Non- Hispanic	Other, Non- Hispanic	Detail for Other, Non-Hispanic					Hispanic or Latino
					AIAN	Asian	NHOPI	Some Other Race	Two or More Races	
A. Total Population										
2000 Total	18,671	18,233	58	237	22	110	5	2	98	143
2000 pct of Total	100.0%	97.7%	0.3%	1.3%	0.1%	0.6%	0.0%	0.0%	0.5%	0.8%
2010 Total	21,073	20,264	119	406	20	196	2	11	177	284
2010 pct of Total	100.0%	96.2%	0.6%	1.9%	0.1%	0.9%	0.0%	0.1%	0.8%	1.3%
B. Population by Major Age Groups by Race and Ethnicity										
2000										
0-19	5,188	5,006	19	103	6	32	0	1	64	60
20-64	11,589	11,345	38	124	14	74	5	1	30	82
65+	1,894	1,882	1	10	2	4	0	0	4	1
85+	160	156	1	3	0	0	0	0	3	0
2010										
0-19	5,238	4,889	38	188	5	73	1	5	104	123
20-64	12,916	12,484	72	204	14	112	1	6	71	156
65+	2,919	2,891	9	14	1	11	0	0	2	5
85+	299	298	1	0	0	0	0	0	0	0
C. Age Mix for Each Racial and Ethnic Group										
2000										
0-19	27.8%	27.5%	32.8%	43.5%	27.3%	29.1%	0.0%	50.0%	65.3%	42.0%
20-64	62.1%	62.2%	65.5%	52.3%	63.6%	67.3%	100.0%	50.0%	30.6%	57.3%
65+	10.1%	10.3%	1.7%	4.2%	9.1%	3.6%	0.0%	0.0%	4.1%	0.7%
85+	0.9%	0.9%	1.7%	1.3%	0.0%	0.0%	0.0%	0.0%	3.1%	0.0%
2010										
0-19	24.9%	24.1%	31.9%	46.3%	25.0%	37.2%	50.0%	45.5%	58.8%	43.3%
20-64	61.3%	61.6%	60.5%	50.2%	70.0%	57.1%	50.0%	54.5%	40.1%	54.9%
65+	13.9%	14.3%	7.6%	3.4%	5.0%	5.6%	0.0%	0.0%	1.1%	1.8%
85+	1.4%	1.5%	0.8%	0.0%	0.0%	0.0%	0.0%	0.0%	0.0%	0.0%
D. Racial and Ethnic Composition of Each Age Group										
2000										
0-19	100.0%	96.5%	0.4%	2.0%	0.1%	0.6%	0.0%	0.0%	1.2%	1.2%
20-64	100.0%	97.9%	0.3%	1.1%	0.1%	0.6%	0.0%	0.0%	0.3%	0.7%
65+	100.0%	99.4%	0.1%	0.5%	0.1%	0.2%	0.0%	0.0%	0.2%	0.1%
85+	100.0%	97.5%	0.6%	1.9%	0.0%	0.0%	0.0%	0.0%	1.9%	0.0%
2010										
0-19	100.0%	93.3%	0.7%	3.6%	0.1%	1.4%	0.0%	0.1%	2.0%	2.3%
20-64	100.0%	96.7%	0.6%	1.6%	0.1%	0.9%	0.0%	0.0%	0.5%	1.2%
65+	100.0%	99.0%	0.3%	0.5%	0.0%	0.4%	0.0%	0.0%	0.1%	0.2%
85+	100.0%	99.7%	0.3%	0.0%	0.0%	0.0%	0.0%	0.0%	0.0%	0.0%
E. Population Growth										
2000-2010, Change										
0-19	50	-117	19	85	-1	41	1	4	40	63
20-64	1,327	1,139	34	80	0	38	-4	5	41	74
65+	1,025	1,009	8	4	-1	7	0	0	-2	4
85+	139	142	0	-3	0	0	0	0	-3	0
Total	2,402	2,031	61	169	-2	86	-3	9	79	141
2000-2010, Pct Change										
0-19	1.0%	-2.3%	100.0%	82.5%	-16.7%	128.1%	0.0%	400.0%	62.5%	105.0%
20-64	11.5%	10.0%	89.5%	64.5%	0.0%	51.4%	-80.0%	500.0%	136.7%	90.2%
65+	54.1%	53.6%	800.0%	40.0%	-50.0%	175.0%	0.0%	0.0%	-50.0%	400.0%
85+	86.9%	91.0%	0.0%	-100.0%	0.0%	0.0%	0.0%	0.0%	-100.0%	0.0%
Total	12.9%	11.1%	105.2%	71.3%	-9.1%	78.2%	-60.0%	450.0%	80.6%	98.6%

Reference Data

Dillsburg Area Public Library

	Total Population	White, Non- Hispanic	Black, Non- Hispanic	Other, Non- Hispanic	Detail for Other, Non-Hispanic					Hispanic or Latino
					AIAN	Asian	NHOPI	Some Other	Two or More	
								Race	Races	
F. Population by Library-Defined Age Groups, 2010										
0-5	1,469	1,374	6	56	3	21	0	0	32	33
6-10	1,315	1,206	10	60	1	22	1	1	35	39
11-13	815	770	2	25	0	9	0	2	14	18
14-18	1,463	1,374	16	46	1	21	0	2	22	27
19-32	2,830	2,684	26	62	4	35	0	1	22	58
33-45	3,845	3,698	22	61	3	33	0	1	24	64
46-64	6,417	6,267	28	82	7	44	1	4	26	40
65-84	2,620	2,593	8	14	1	11	0	0	2	5
85+	299	298	1	0	0	0	0	0	0	0
Total	21,073	20,264	119	406	20	196	2	11	177	284
G. Population by 5-Year Age Cohorts, 2010										
0-4	1,213	1,132	5	48	2	16	0	0	30	28
5-9	1,297	1,198	8	57	2	23	0	0	32	34
10-14	1,398	1,306	10	48	0	21	1	3	23	34
15-19	1,330	1,253	15	35	1	13	0	2	19	27
20-24	937	892	8	17	0	10	0	1	6	20
25-29	1,049	992	11	26	2	14	0	0	10	20
30-34	1,120	1,058	6	29	3	15	0	0	11	27
35-39	1,443	1,384	9	25	1	14	0	0	10	25
40-44	1,541	1,499	8	18	1	10	0	0	7	16
45-49	1,953	1,889	15	29	0	16	1	3	9	20
50-54	1,909	1,864	5	24	4	15	0	1	4	16
55-59	1,655	1,617	6	22	1	11	0	0	10	10
60-64	1,309	1,289	4	14	2	7	0	1	4	2
65-69	1,079	1,068	2	6	1	5	0	0	0	3
70-74	722	712	6	4	0	4	0	0	0	0
75-79	487	484	0	3	0	2	0	0	1	0
80-84	332	329	0	1	0	0	0	0	1	2
85-89	227	226	1	0	0	0	0	0	0	0
90-94	58	58	0	0	0	0	0	0	0	0
95-99	13	13	0	0	0	0	0	0	0	0
100+	1	1	0	0	0	0	0	0	0	0
Total	21,073	20,264	119	406	20	196	2	11	177	284

Source: Decennial Census 2010, 2000, American Community Survey 2008-2012

Prepared for the Pennsylvania State Library by The Pennsylvania State Data Center, 9/2014

Reference Data

Dillsburg Area Public Library

H. Income Distribution, 2008-2012

Range (in thousands)	Households	Pct of Total
<\$10K	127	1.6%
\$10K to <\$25K	888	10.9%
\$25K to <\$50K	1,762	21.6%
\$50K to <\$75K	1,939	23.8%
\$75K to <\$100K	1,045	12.8%
\$100K to <\$150K	1,527	18.7%
\$150K+	867	10.6%

I. Household Type, 2010

Household Type	2000	2000pct	2010	2010pct
Total Households	7,130	100.0%	8,260	100.0%
Family Households	5,471	76.7%	6,169	74.7%
Husband-wife, no children w/children	2,068	29.0%	1,961	23.7%
Female head, no husband, w/ children	321	4.5%	350	4.2%
Male head, no wife, w/ children	150	2.1%	156	1.9%
Without children	2,932	41.1%	3,702	44.8%
Nonfamily households	1,659	23.3%	2,091	25.3%
Living alone	1,339	18.8%	1,657	20.1%
Other nonfamily	320	4.5%	434	5.3%

J. Household Type by Race and Ethnicity, 2008-2012

Household Type	White, NH	Black, NH	Other, NH	Hispanic
Total Households	8,060	43	119	60
Husband wife family	63.2%	46.5%	55.5%	55.0%
Family with male head, no wife	3.8%	2.3%	8.4%	11.7%
family with female head, no husband	7.7%	11.6%	10.1%	13.3%
Living alone	20.0%	30.2%	19.3%	11.7%
Other nonfamily	5.2%	9.3%	6.7%	8.3%

K. Poverty, 2008-2012

Families	Poverty	PA
All families	3.1%	9.1%
Families w/ related children	4.7%	15.3%
Female householder, no husband present	11.0%	28.8%
Female householder, no husband present, w/ related children	15.7%	39.2%
All people	4.2%	13.1%
Under 18 years	4.8%	18.4%
18 to 64 years	3.9%	12.3%
65 years and over	4.8%	8.4%

L. Educational Attainment by Race and Ethnicity, 2008-2012

Education Level	White, NH	Black	Other	Hispanic	Total
Population 25 years and over	14,189	81	207	283	14,715
Less than high school	8.0%	0.0%	11%	21.2%	8.1%
High school graduate (includes equivalency)	37.2%	49.4%	15%	46.6%	37.3%
Some college or associates degree	24.9%	35.8%	25%	21.2%	24.8%
Bachelors degree or higher	29.9%	14.8%	49%	11.0%	29.8%

M. Occupation, 2008-2012

Occupation	Estimate	Percent
Civilian population age 16 years and over	11,469	100.0%
Management, professional, and related occupations	3,995	34.8%
Service occupations	1,821	15.9%
Sales and office occupations	2,809	24.5%
Farming, fishing, and forestry occupations	80	0.7%
Construction, extraction, maintenance, and repair occupations	1,222	10.7%
Production, transportation, and material moving occupations	1,542	13.4%

N. Class of Worker, 2008-2012

Occupation	Estimate	Percent
Civilian population age 16 years and over	11,469	100.0%
Private, for profit, wage and salary employee	7,474	65.2%
Private, not for profit, wage and salary employee	1,352	11.8%
Private, for profit, wage and salary self-employed in own business	300	2.6%
Government workers	1,434	12.5%
Self-employed in own not incorporated business	893	7.8%
Unpaid family workers in family business	16	0.1%