

Demographic Profile Dormont Public Library

Population Growth: The total population of the Dormont Public Library service area decreased by -7.7 percent over the past decade to 8,593; this decline rate was lower than the statewide rate of 3.4 percent.

Age and Sex: In 2010, the Dormont Public Library service area had a total population of 8,593 - 4,206 males (48.9 percent) and 4,387 females (51.1 percent). The age structure of the population in 2010 was as follows: 19.2 percent of the population was under 20 years old, 69.1 percent was 20 to 64 years old and 11.7 percent was 65 years or older.

Race and Ethnicity: For people reporting one race alone, not of Hispanic ethnicity, 92.5 percent were White; 2.1 percent were Black or African American; 2.9 percent were Other Race Alone.¹ A total of 214 or 2.5 percent of the population were Hispanic.²

Households: In 2010, there were 4,051 households in the Dormont Public Library service area. The average household size was 2.12 people. Families made up 51.6 percent of the households. This figure includes both families with (20.2 percent) and without (31.4 percent) children. Of families with children less than 18 years old, 13.8 percent were married-couple families, 4.8 percent were female householder families with no husband present, and the remaining (1.6 percent) were male-headed households with no wife present.

Education: The educational attainment of the population 25 years and over was higher in the Dormont Public Library service area than in Pennsylvania. During the period 2008-2012, 33.2 percent of residents had earned a Bachelor's degree or higher, compared with 27.0 percent statewide. A total of 310 or 4.8 percent had not completed high school, compared with 11.7 percent for the commonwealth as a whole.

Income and Poverty: Households with incomes of \$25,000 to \$49,999 (29.8 percent) made up the largest percent of households in the Dormont Public Library service area in 2008-2012. For comparison, 24.4 percent of commonwealth households were in this range during the period.

In 2008-2012, the overall poverty rate for the Dormont Public Library service area was lower than Pennsylvania (7.0 percent compared to 13.1 percent). The poverty rate for the population under 18 years of age was 8.7 percent, compared with 5.8 percent of people 18 to 64 years and 11.5 percent for those aged 65 years and over. A total of 113 or 5.4 percent of all families had incomes below poverty level. In 2008-2012, 10.0 percent of families with related children and 34.6 percent of families with a female householder and no husband with related children present had incomes below the poverty level.

Class of Worker and Occupation: In 2008-2012, 86.6 percent of the workforce was private wage and salary workers; 8.2 percent were federal, state, or local government workers; and 5.1 percent were self-employed in their own (not incorporated) business.

The top occupation group for the civilian employed population 16 years and over in the Dormont Public Library service area in 2008-2012 was Management, business, science, and arts (41.4 percent).

¹ Other race includes those who identified themselves as American Indian/Alaska Native, Asian, Native Hawaiian/Other Pacific Islander, Some Other Race and Two or More Races on the 2010 Census form.

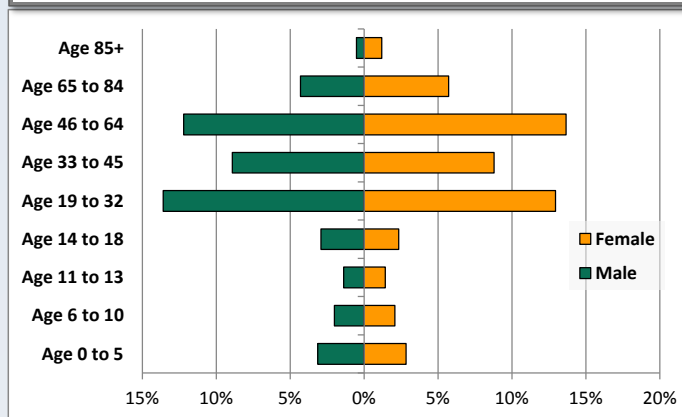
² People of Hispanic origin may be of any race.

Demographic Profile

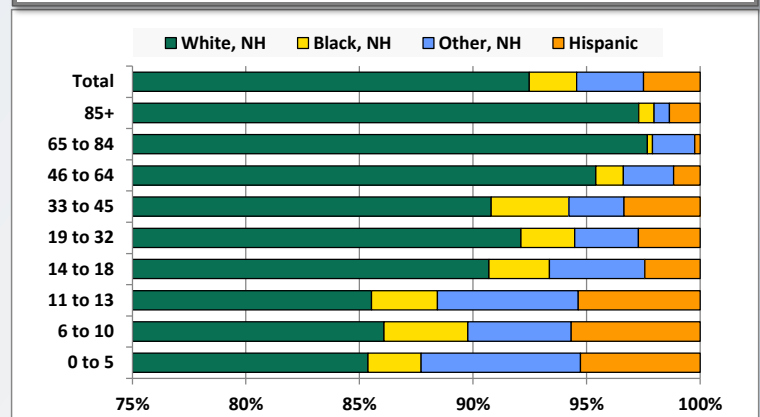
Dormont Public Library

Key Indicators		
	2000	2010
Population Growth		
Total Population	9,305	8,593
10-Year Growth	N/A	-7.7%
Diversity		
White Alone, Non-Hispanic	95.3%	92.5%
Black Alone, Non-Hispanic	1.1%	2.1%
Other Race Alone, Non-Hispanic	2.6%	2.9%
Percent Hispanic	1.1%	2.5%
Aging		
Percent 65 Years and Over	14.1%	11.7%
Households		
Percent Married Couple with Own Children	19.0%	13.8%
Percent Living Alone	36.0%	38.0%

Population by Library-Defined Age Group, 2010



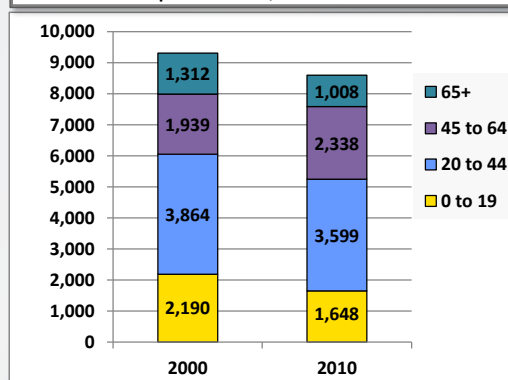
Race/Ethnicity by Library-Defined Age Group, 2010



Population Growth by Library-Defined Age Group, 2000 to 2010

Age Group	2010	Change	
		Numeric	Percent
Total	8,593	-712	-7.7%
85+	148	-11	-6.9%
65 to 84	860	-293	-25.4%
46 to 64	2,223	460	26.1%
33 to 45	1,522	-562	-27.0%
19 to 32	2,281	235	11.5%
14 to 18	452	-186	-29.2%
11 to 13	242	-105	-30.3%
6 to 10	352	-180	-33.8%
0 to 5	513	-70	-12.0%

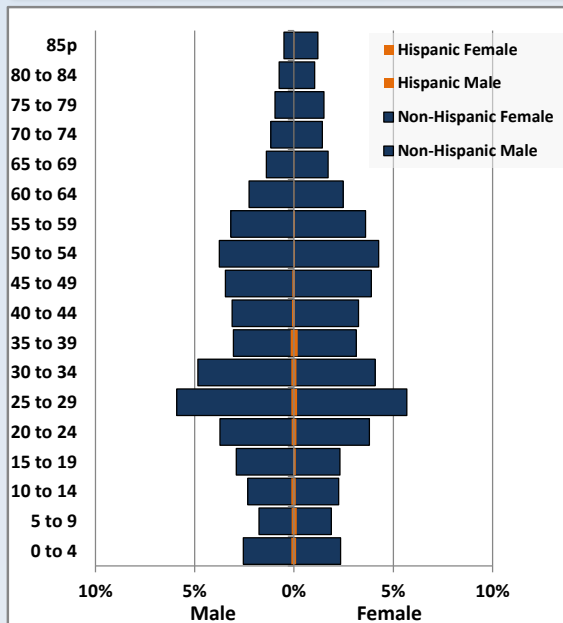
Population Total, 2000 and 2010



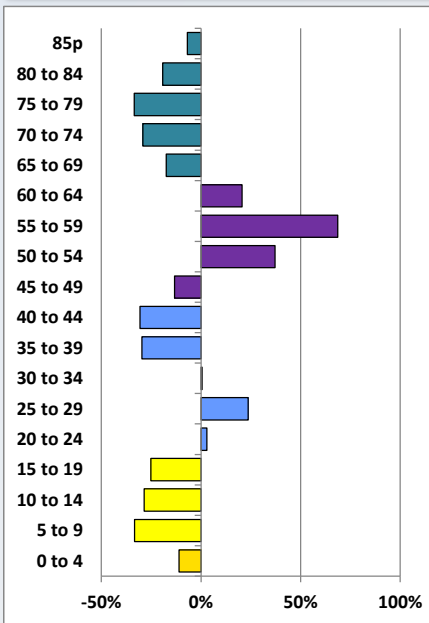
Demographic Profile

Dormont Public Library

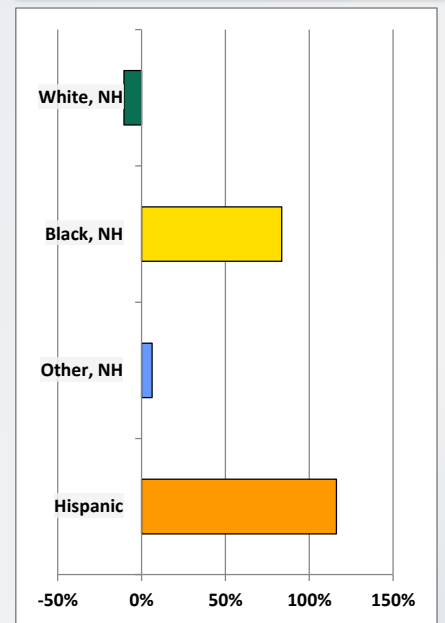
Population by 5-Year Age Cohorts



Pop Change by Age, 2000 to 2010

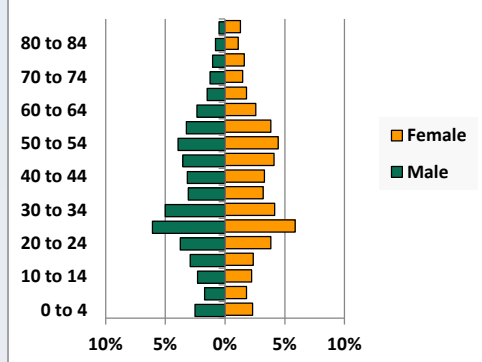


Pop Change by Race/Ethnicity, 2000 to 2010

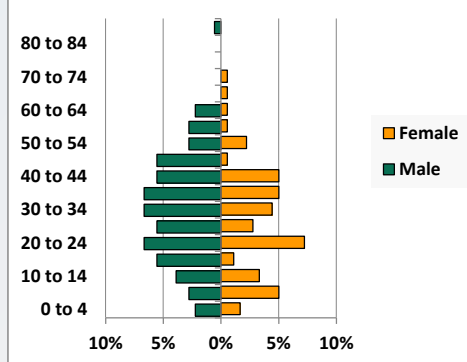


Population by Age, Race and Ethnicity 2010

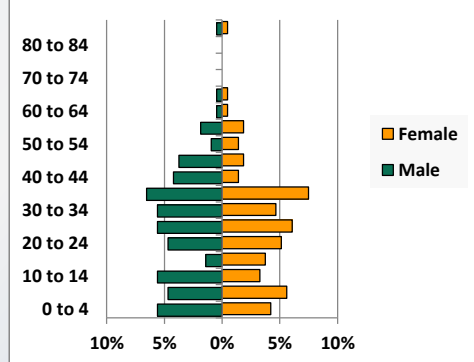
White, Not Hispanic



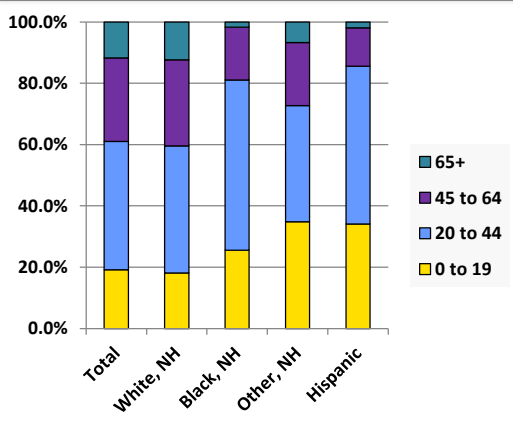
Black, Non-Hispanic



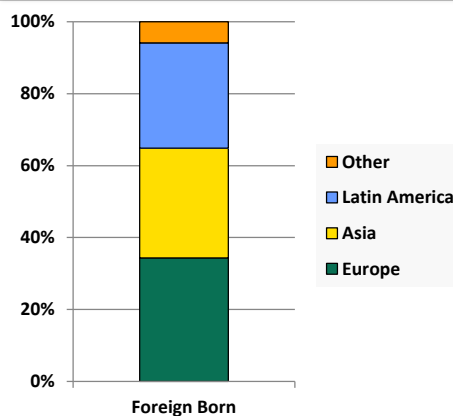
Hispanic



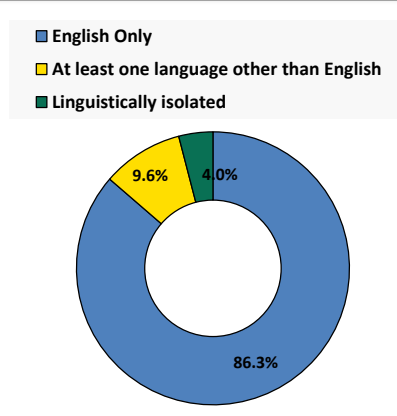
Age by Race and Ethnicity, 2010



Foreign Born, 2010



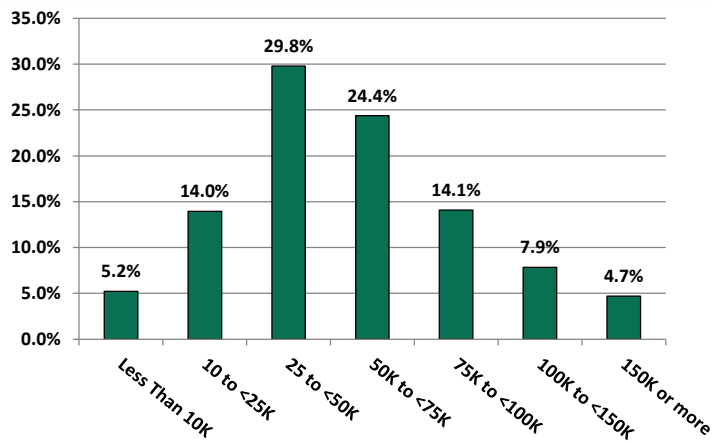
Household Language, 2010



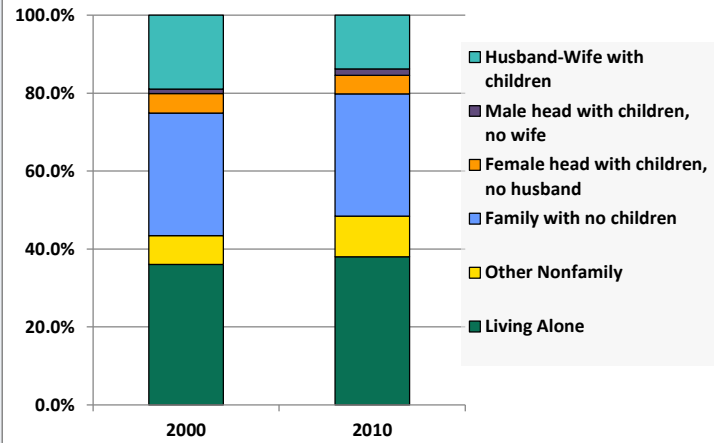
Demographic Profile

Dormont Public Library

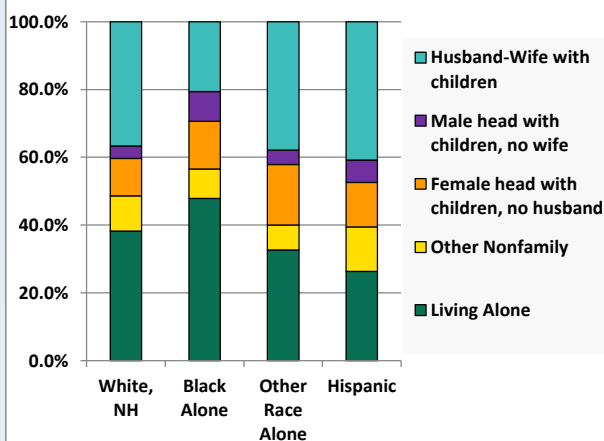
Household Income Distribution, 2008-2012



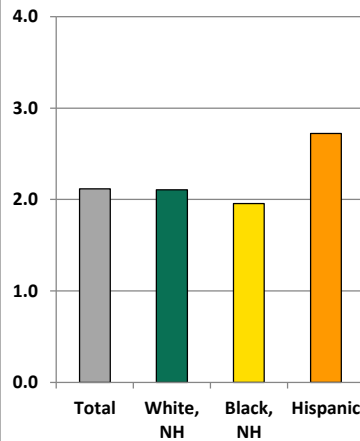
Household Type, 2000 and 2010



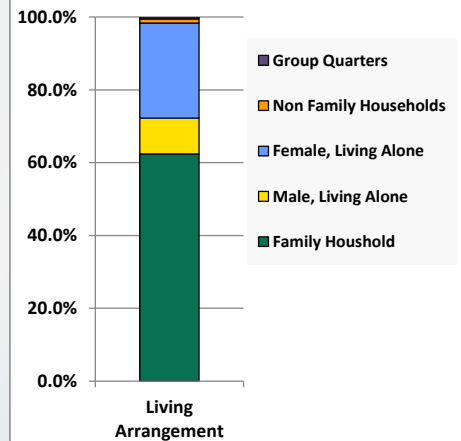
Household Type by Race/Ethnicity, 2010



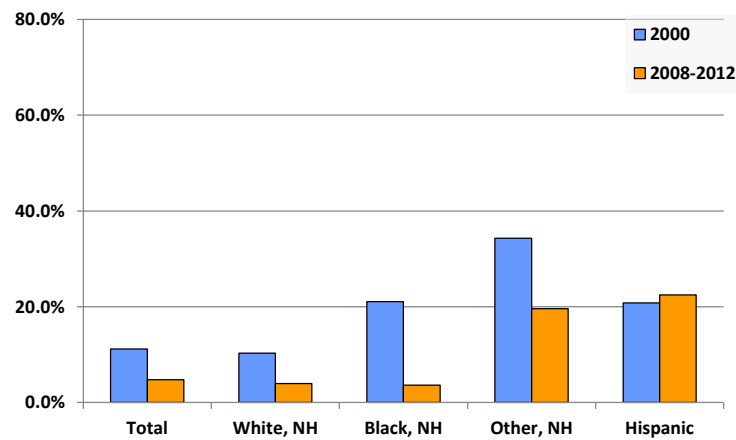
Average Household Size, 2010



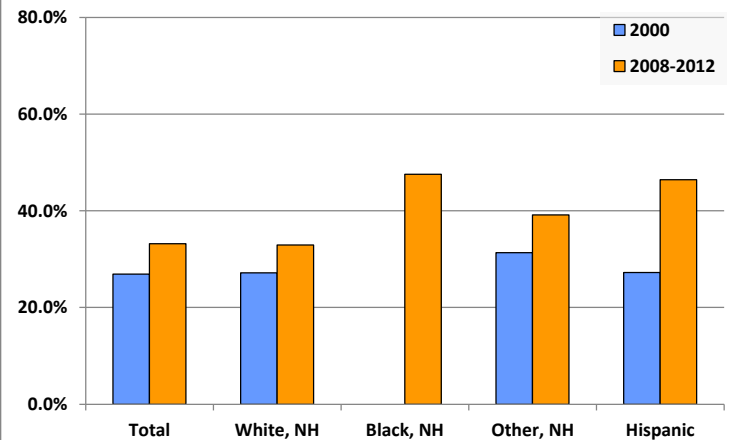
Living Arrangements 65+, 2008-2012



Percent of Adults that Did Not Complete High School



Percent of Adults Who Attained a Bachelor's Degree or Higher



Reference Data

Dormont Public Library

	Total Population	White, Non- Hispanic	Black, Non- Hispanic	Other, Non- Hispanic	Detail for Other, Non-Hispanic					Hispanic or Latino
					AIAN	Asian	NHOPI	Some Other Race	Two or More Races	
A. Total Population										
2000 Total	9,305	8,870	98	238	16	147	5	1	69	99
2000 pct of Total	100.0%	95.3%	1.1%	2.6%	0.2%	1.6%	0.1%	0.0%	0.7%	1.1%
2010 Total	8,593	7,946	180	253	6	131	0	18	98	214
2010 pct of Total	100.0%	92.5%	2.1%	2.9%	0.1%	1.5%	0.0%	0.2%	1.1%	2.5%
B. Population by Major Age Groups by Race and Ethnicity										
2000										
0-19	2,190	2,044	35	71	3	26	0	1	41	40
20-64	5,803	5,550	59	143	11	106	4	0	22	51
65+	1,312	1,276	4	24	2	15	1	0	6	8
85+	159	156	0	1	0	0	0	0	1	2
2010										
0-19	1,648	1,441	46	88	1	21	0	11	55	73
20-64	5,937	5,521	131	148	5	93	0	7	43	137
65+	1,008	984	3	17	0	17	0	0	0	4
85+	148	144	1	1	0	1	0	0	0	2
C. Age Mix for Each Racial and Ethnic Group										
2000										
0-19	23.5%	23.0%	35.7%	29.8%	18.8%	17.7%	0.0%	100.0%	59.4%	40.4%
20-64	62.4%	62.6%	60.2%	60.1%	68.8%	72.1%	80.0%	0.0%	31.9%	51.5%
65+	14.1%	14.4%	4.1%	10.1%	12.5%	10.2%	20.0%	0.0%	8.7%	8.1%
85+	1.7%	1.8%	0.0%	0.4%	0.0%	0.0%	0.0%	0.0%	1.4%	2.0%
2010										
0-19	19.2%	18.1%	25.6%	34.8%	16.7%	16.0%	0.0%	61.1%	56.1%	34.1%
20-64	69.1%	69.5%	72.8%	58.5%	83.3%	71.0%	0.0%	38.9%	43.9%	64.0%
65+	11.7%	12.4%	1.7%	6.7%	0.0%	13.0%	0.0%	0.0%	0.0%	1.9%
85+	1.7%	1.8%	0.6%	0.4%	0.0%	0.8%	0.0%	0.0%	0.0%	0.9%
D. Racial and Ethnic Composition of Each Age Group										
2000										
0-19	100.0%	93.3%	1.6%	3.2%	0.1%	1.2%	0.0%	0.0%	1.9%	1.8%
20-64	100.0%	95.6%	1.0%	2.5%	0.2%	1.8%	0.1%	0.0%	0.4%	0.9%
65+	100.0%	97.3%	0.3%	1.8%	0.2%	1.1%	0.1%	0.0%	0.5%	0.6%
85+	100.0%	98.1%	0.0%	0.6%	0.0%	0.0%	0.0%	0.0%	0.6%	1.3%
2010										
0-19	100.0%	87.4%	2.8%	5.3%	0.1%	1.3%	0.0%	0.7%	3.3%	4.4%
20-64	100.0%	93.0%	2.2%	2.5%	0.1%	1.6%	0.0%	0.1%	0.7%	2.3%
65+	100.0%	97.6%	0.3%	1.7%	0.0%	1.7%	0.0%	0.0%	0.0%	0.4%
85+	100.0%	97.3%	0.7%	0.7%	0.0%	0.7%	0.0%	0.0%	0.0%	1.4%
E. Population Growth										
2000-2010, Change										
0-19	-542	-603	11	17	-2	-5	0	10	14	33
20-64	134	-29	72	5	-6	-13	-4	7	21	86
65+	-304	-292	-1	-7	-2	2	-1	0	-6	-4
85+	-11	-12	1	0	0	1	0	0	-1	0
Total	-712	-924	82	15	-10	-16	-5	17	29	115
2000-2010, Pct Change										
0-19	-24.7%	-29.5%	31.4%	23.9%	-66.7%	-19.2%	0.0%	1000.0%	34.1%	82.5%
20-64	2.3%	-0.5%	122.0%	3.5%	-54.5%	-12.3%	-100.0%	0.0%	95.5%	168.6%
65+	-23.2%	-22.9%	-25.0%	-29.2%	-100.0%	13.3%	-100.0%	0.0%	-100.0%	-50.0%
85+	-6.9%	-7.7%	0.0%	0.0%	0.0%	0.0%	0.0%	0.0%	-100.0%	0.0%
Total	-7.7%	-10.4%	83.7%	6.3%	-62.5%	-10.9%	-100.0%	1700.0%	42.0%	116.2%

Reference Data

Dormont Public Library

					Detail for Other, Non-Hispanic					Hispanic or Latino
	Total Population	White, Non-Hispanic	Black, Non-Hispanic	Other, Non-Hispanic	AIAN	Asian	NHOPI	Some Other	Two or More	
								Race	Races	
F. Population by Library-Defined Age Groups, 2010										
0-5	513	438	12	36	0	6	0	6	24	27
6-10	352	303	13	16	0	5	0	2	9	20
11-13	242	207	7	15	1	5	0	1	8	13
14-18	452	410	12	19	0	5	0	2	12	11
19-32	2,281	2,101	54	64	0	33	0	3	28	62
33-45	1,522	1,382	52	37	3	22	0	2	10	51
46-64	2,223	2,121	27	49	2	38	0	2	7	26
65-84	860	840	2	16	0	16	0	0	0	2
85+	148	144	1	1	0	1	0	0	0	2
Total	8,593	7,946	180	253	6	131	0	18	98	214
G. Population by 5-Year Age Cohorts, 2010										
0-4	441	383	7	30	0	6	0	4	20	21
5-9	335	280	14	19	0	3	0	4	12	22
10-14	412	360	13	20	1	7	0	2	10	19
15-19	460	418	12	19	0	5	0	1	13	11
20-24	668	603	25	19	0	6	0	2	11	21
25-29	1,021	949	15	32	0	18	0	1	13	25
30-34	789	729	20	18	1	12	0	0	5	22
35-39	562	497	21	14	2	11	0	1	0	30
40-44	559	515	19	13	0	6	0	1	6	12
45-49	644	607	11	14	0	11	0	0	3	12
50-54	695	666	9	15	0	13	0	0	2	5
55-59	590	563	6	13	2	7	0	1	3	8
60-64	409	392	5	10	0	9	0	1	0	2
65-69	269	260	1	6	0	6	0	0	0	2
70-74	223	217	1	5	0	5	0	0	0	0
75-79	213	211	0	2	0	2	0	0	0	0
80-84	155	152	0	3	0	3	0	0	0	0
85-89	105	103	1	0	0	0	0	0	0	1
90-94	34	32	0	1	0	1	0	0	0	1
95-99	8	8	0	0	0	0	0	0	0	0
100+	1	1	0	0	0	0	0	0	0	0
Total	8,593	7,946	180	253	6	131	0	18	98	214

Source: Decennial Census 2010, 2000, American Community Survey 2008-2012

Prepared for the Pennsylvania State Library by The Pennsylvania State Data Center, 9/2014

Reference Data

Dormont Public Library

H. Income Distribution, 2008-2012

Range (in thousands)	Households	Pct of Total
<\$10K	214	5.2%
\$10K to <\$25K	570	14.0%
\$25K to <\$50K	1,217	29.8%
\$50K to <\$75K	996	24.4%
\$75K to <\$100K	575	14.1%
\$100K to <\$150K	321	7.9%
\$150K+	192	4.7%

I. Household Type, 2010

Household Type	2000	2000pct	2010	2010pct
Total Households	4,089	100.0%	4,051	100.0%
Family Households	2,313	56.6%	2,089	51.6%
Husband-wife, no children w/children	775	19.0%	560	13.8%
Female head, no husband, w/ children	204	5.0%	193	4.8%
Male head, no wife, w/ children	47	1.1%	64	1.6%
Without children	1,287	31.5%	1,272	31.4%
Nonfamily households	1,776	43.4%	1,962	48.4%
Living alone	1,473	36.0%	1,541	38.0%
Other nonfamily	303	7.4%	421	10.4%

J. Household Type by Race and Ethnicity, 2008-2012

Household Type	White, NH	Black, NH	Other, NH	Hispanic
Total Households	3,812	92	95	76
Husband wife family	36.6%	20.7%	37.9%	40.8%
Family with male head, no wife	3.7%	8.7%	4.2%	6.6%
family with female head, no husband	11.0%	14.1%	17.9%	13.2%
Living alone	38.2%	47.8%	32.6%	26.3%
Other nonfamily	10.4%	8.7%	7.4%	13.2%

K. Poverty, 2008-2012

Families	Poverty	PA
All families	5.4%	9.1%
Families w/ related children	10.0%	15.3%
Female householder, no husband present	18.5%	28.8%
Female householder, no husband present, w/ related children	34.6%	39.2%
All people	7.0%	13.1%
Under 18 years	8.7%	18.4%
18 to 64 years	5.8%	12.3%
65 years and over	11.5%	8.4%

L. Educational Attainment by Race and Ethnicity, 2008-2012

Education Level	White, NH	Black	Other	Hispanic	Total
Population 25 years and over	6,185	82	97	196	6,521
Less than high school	3.9%	3.7%	20%	22.4%	4.8%
High school graduate (includes equivalency)	28.3%	29.3%	12%	8.7%	27.6%
Some college or associates degree	34.8%	19.5%	29%	22.4%	34.4%
Bachelors degree or higher	33.0%	47.6%	39%	46.4%	33.2%

M. Occupation, 2008-2012

Occupation	Estimate	Percent
Civilian population age 16 years and over	5,309	100.0%
Management, professional, and related occupations	2,199	41.4%
Service occupations	998	18.8%
Sales and office occupations	1,310	24.7%
Farming, fishing, and forestry occupations	1	0.0%
Construction, extraction, maintenance, and repair occupations	305	5.7%
Production, transportation, and material moving occupations	496	9.3%

N. Class of Worker, 2008-2012

Occupation	Estimate	Percent
Civilian population age 16 years and over	5,309	100.0%
Private, for profit, wage and salary employee	3,723	70.1%
Private, not for profit, wage and salary employee	806	15.2%
Private, for profit, wage and salary self-employed in own business	70	1.3%
Government workers	437	8.2%
Self-employed in own not incorporated business	273	5.1%
Unpaid family workers in family business	0	0.0%