

Demographic Profile East Berlin Community Library

Population Growth: The total population of the East Berlin Community Library service area increased by 15.5 percent over the past decade to 9,831; this growth rate was higher than the statewide rate of 3.4 percent.

Age and Sex: In 2010, the East Berlin Community Library service area had a total population of 9,831 - 5,000 males (50.9 percent) and 4,831 females (49.1 percent). The age structure of the population in 2010 was as follows: 27.3 percent of the population was under 20 years old, 60.1 percent was 20 to 64 years old and 12.6 percent was 65 years or older.

Race and Ethnicity: For people reporting one race alone, not of Hispanic ethnicity, 94.0 percent were White; .2 percent were Black or African American; 1.5 percent were Other Race Alone.¹ A total of 414 or 4.2 percent of the population were Hispanic.²

Households: In 2010, there were 3,649 households in the East Berlin Community Library service area. The average household size was 2.69 people. Families made up 77.5 percent of the households. This figure includes both families with (33.7 percent) and without (43.9 percent) children. Of families with children less than 18 years old, 26.3 percent were married-couple families, 4.6 percent were female householder families with no husband present, and the remaining (2.7 percent) were male-headed households with no wife present.

Education: The educational attainment of the population 25 years and over was lower in the East Berlin Community Library service area than in Pennsylvania. During the period 2008-2012, 16.2 percent of residents had earned a Bachelor's degree or higher, compared with 27.0 percent statewide. A total of 946 or 14.0 percent had not completed high school, compared with 11.7 percent for the commonwealth as a whole.

Income and Poverty: Households with incomes of \$50,000 to \$74,999 (24.9 percent) made up the largest percent of households in the East Berlin Community Library service area in 2008-2012. For comparison, 18.7 percent of commonwealth households were in this range during the period.

In 2008-2012, the overall poverty rate for the East Berlin Community Library service area was lower than Pennsylvania (5.0 percent compared to 13.1 percent). The poverty rate for the population under 18 years of age was 6.7 percent, compared with 3.8 percent of people 18 to 64 years and 7.5 percent for those aged 65 years and over. A total of 112 or 3.8 percent of all families had incomes below poverty level. In 2008-2012, 6.2 percent of families with related children and 20.1 percent of families with a female householder and no husband with related children present had incomes below the poverty level.

Class of Worker and Occupation: In 2008-2012, 84.6 percent of the workforce was private wage and salary workers; 9.4 percent were federal, state, or local government workers; and 6.0 percent were self-employed in their own (not incorporated) business.

The top occupation group for the civilian employed population 16 years and over in the East Berlin Community Library service area in 2008-2012 was Management, business, science, and arts (29.1 percent).

¹ Other race includes those who identified themselves as American Indian/Alaska Native, Asian, Native Hawaiian/Other Pacific Islander, Some Other Race and Two or More Races on the 2010 Census form.

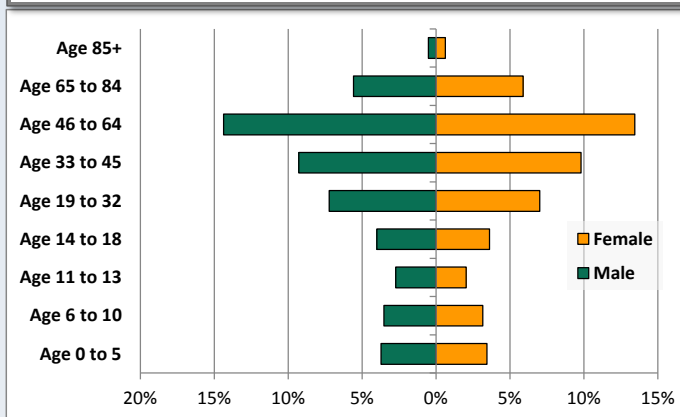
² People of Hispanic origin may be of any race.

Demographic Profile

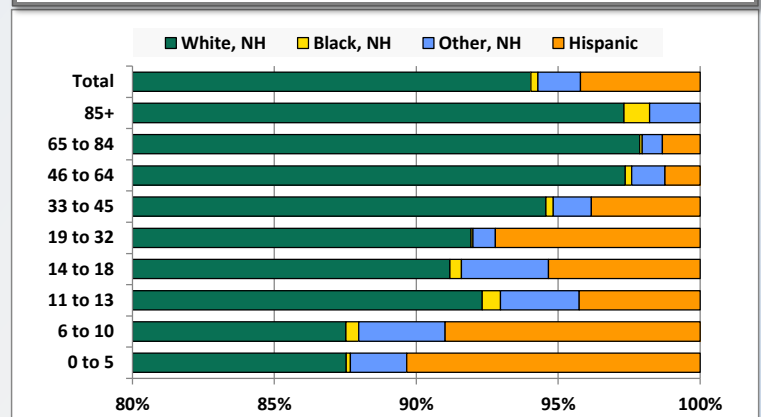
East Berlin Community Library

Key Indicators		
	2000	2010
Population Growth		
Total Population	8,515	9,831
10-Year Growth	N/A	15.5%
Diversity		
White Alone, Non-Hispanic	97.3%	94.0%
Black Alone, Non-Hispanic	0.2%	0.2%
Other Race Alone, Non-Hispanic	1.0%	1.5%
Percent Hispanic	1.6%	4.2%
Aging		
Percent 65 Years and Over	10.2%	12.6%
Households		
Percent Married Couple with Own Children	31.0%	26.3%
Percent Living Alone	16.9%	17.6%

Population by Library-Defined Age Group, 2010



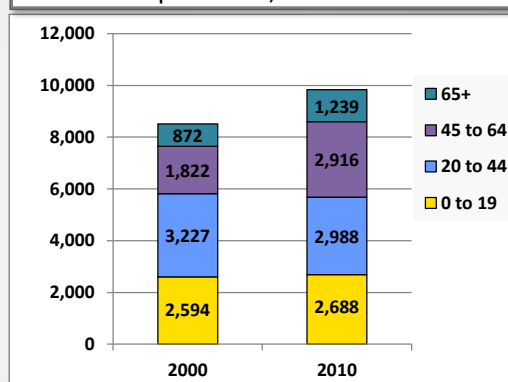
Race/Ethnicity by Library-Defined Age Group, 2010



Population Growth by Library-Defined Age Group, 2000 to 2010

Age Group	2010	Change	
		Numeric	Percent
Total	9,831	1,316	15.5%
85+	112	70	166.7%
65 to 84	1,127	297	35.8%
46 to 64	2,734	1,052	62.5%
33 to 45	1,877	-126	-6.3%
19 to 32	1,400	-42	-2.9%
14 to 18	749	134	21.8%
11 to 13	469	55	13.3%
6 to 10	657	-63	-8.8%
0 to 5	706	-61	-8.0%

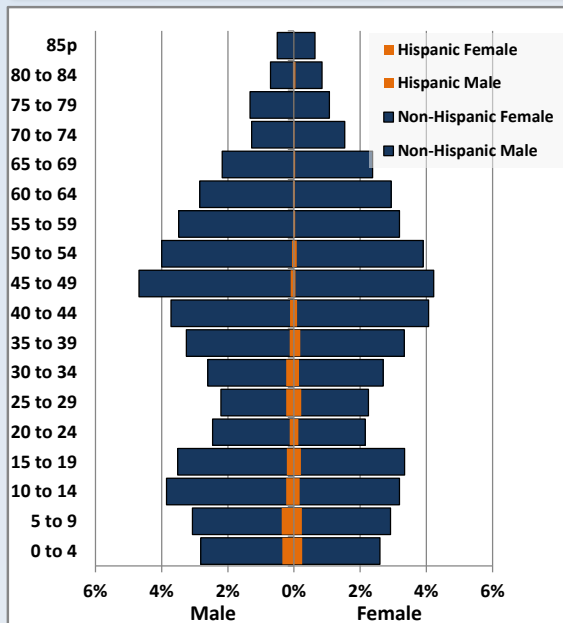
Population Total, 2000 and 2010



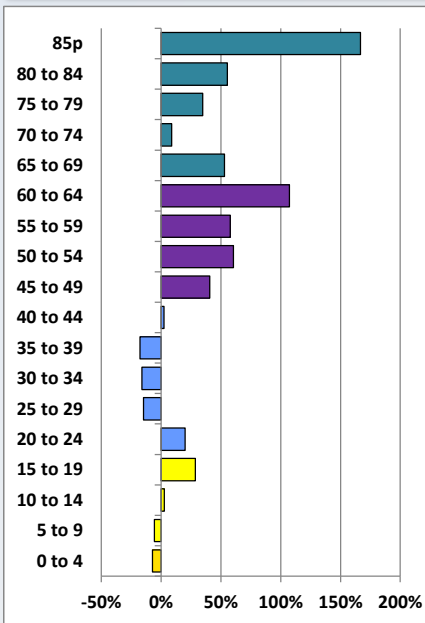
Demographic Profile

East Berlin Community Library

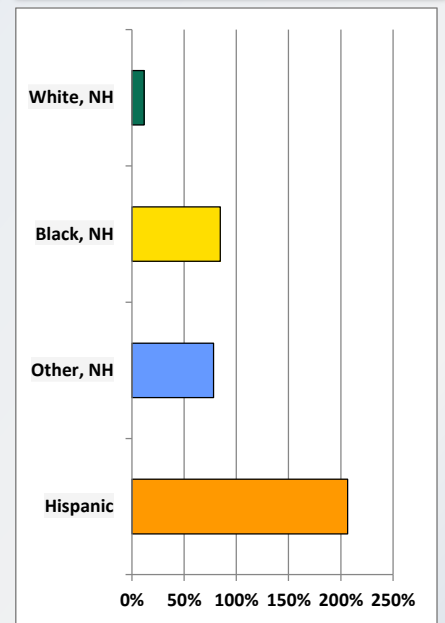
Population by 5-Year Age Cohorts



Pop Change by Age, 2000 to 2010

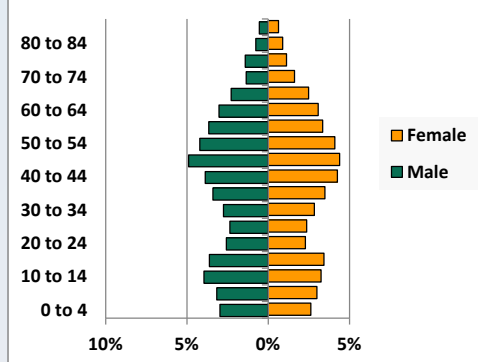


Pop Change by Race/Ethnicity, 2000 to 2010

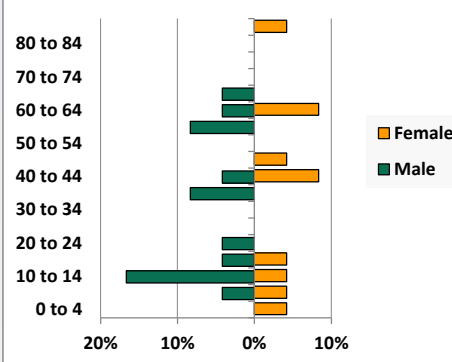


Population by Age, Race and Ethnicity 2010

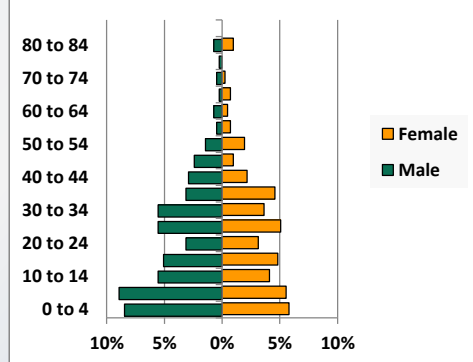
White, Not Hispanic



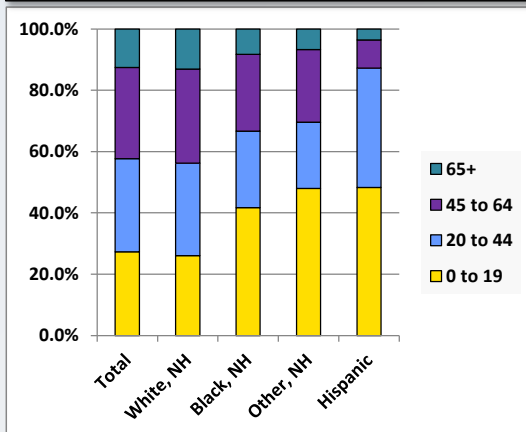
Black, Non-Hispanic



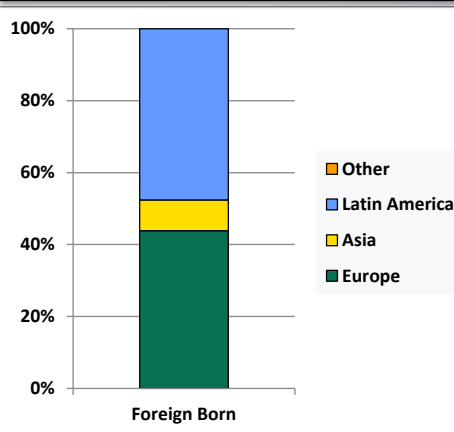
Hispanic



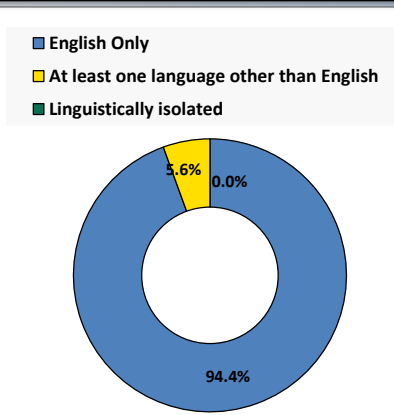
Age by Race and Ethnicity, 2010



Foreign Born, 2010



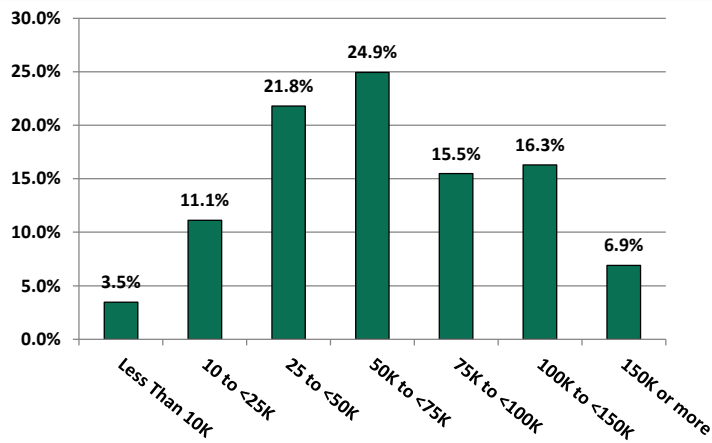
Household Language, 2010



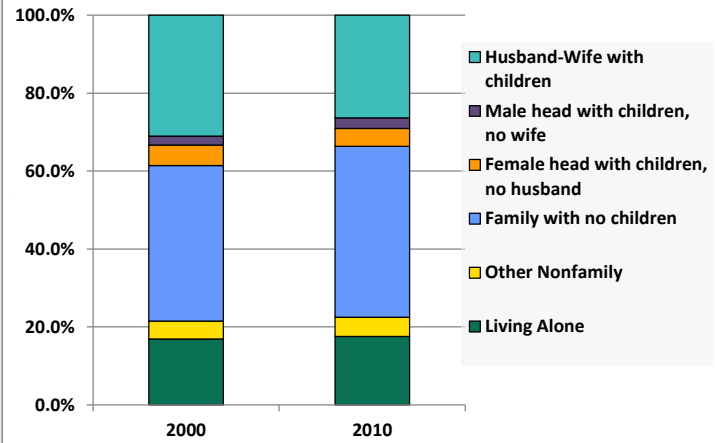
Demographic Profile

East Berlin Community Library

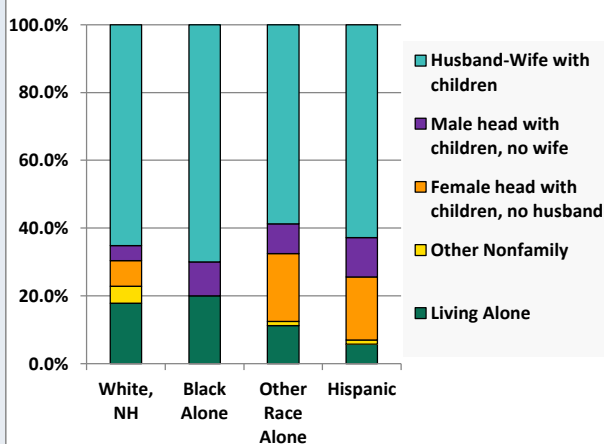
Household Income Distribution, 2008-2012



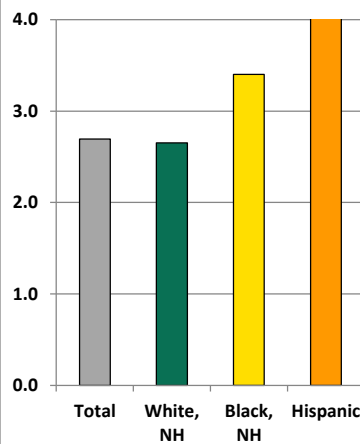
Household Type, 2000 and 2010



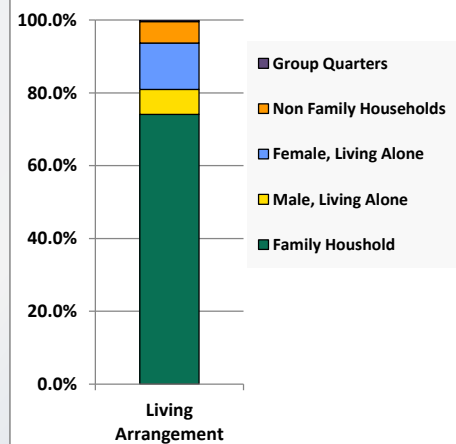
Household Type by Race/Ethnicity, 2010



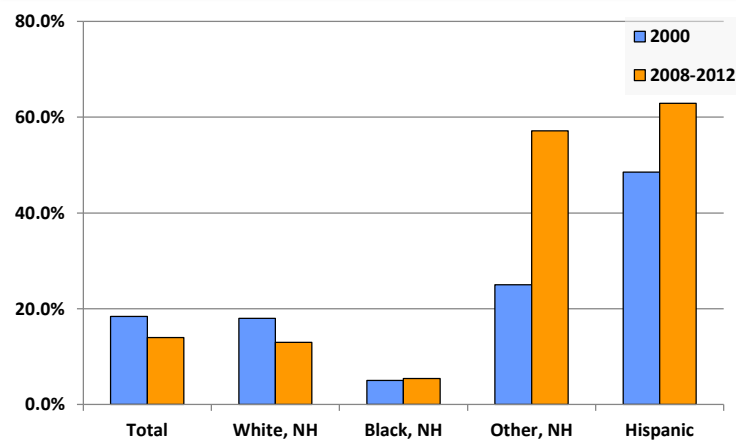
Average Household Size, 2010



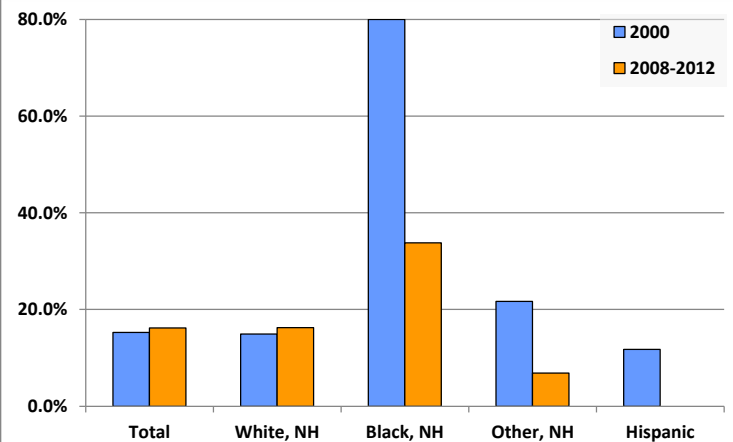
Living Arrangements 65+, 2008-2012



Percent of Adults that Did Not Complete High School



Percent of Adults Who Attained a Bachelor's Degree or Higher



Reference Data

East Berlin Community Library

	Total Population	White, Non- Hispanic	Black, Non- Hispanic	Other, Non- Hispanic	Detail for Other, Non-Hispanic					Hispanic or Latino
					AIAN	Asian	NHOPI	Some Other Race	Two or More Races	
A. Total Population										
2000 Total	8,515	8,284	13	83	14	19	1	2	47	135
2000 pct of Total	100.0%	97.3%	0.2%	1.0%	0.2%	0.2%	0.0%	0.0%	0.6%	1.6%
2010 Total	9,831	9,245	24	148	6	56	7	7	72	414
2010 pct of Total	100.0%	94.0%	0.2%	1.5%	0.1%	0.6%	0.1%	0.1%	0.7%	4.2%
B. Population by Major Age Groups by Race and Ethnicity										
2000										
0-19	2,594	2,493	5	29	6	1	0	1	21	67
20-64	5,049	4,927	8	47	7	14	1	1	24	67
65+	872	864	0	7	1	4	0	0	2	1
85+	42	42	0	0	0	0	0	0	0	0
2010										
0-19	2,688	2,407	10	71	0	19	2	6	44	200
20-64	5,904	5,626	12	67	5	34	5	1	22	199
65+	1,239	1,212	2	10	1	3	0	0	6	15
85+	112	109	1	2	0	1	0	0	1	0
C. Age Mix for Each Racial and Ethnic Group										
2000										
0-19	30.5%	30.1%	38.5%	34.9%	42.9%	5.3%	0.0%	50.0%	44.7%	49.6%
20-64	59.3%	59.5%	61.5%	56.6%	50.0%	73.7%	100.0%	50.0%	51.1%	49.6%
65+	10.2%	10.4%	0.0%	8.4%	7.1%	21.1%	0.0%	0.0%	4.3%	0.7%
85+	0.5%	0.5%	0.0%	0.0%	0.0%	0.0%	0.0%	0.0%	0.0%	0.0%
2010										
0-19	27.3%	26.0%	41.7%	48.0%	0.0%	33.9%	28.6%	85.7%	61.1%	48.3%
20-64	60.1%	60.9%	50.0%	45.3%	83.3%	60.7%	71.4%	14.3%	30.6%	48.1%
65+	12.6%	13.1%	8.3%	6.8%	16.7%	5.4%	0.0%	0.0%	8.3%	3.6%
85+	1.1%	1.2%	4.2%	1.4%	0.0%	1.8%	0.0%	0.0%	1.4%	0.0%
D. Racial and Ethnic Composition of Each Age Group										
2000										
0-19	100.0%	96.1%	0.2%	1.1%	0.2%	0.0%	0.0%	0.0%	0.8%	2.6%
20-64	100.0%	97.6%	0.2%	0.9%	0.1%	0.3%	0.0%	0.0%	0.5%	1.3%
65+	100.0%	99.1%	0.0%	0.8%	0.1%	0.5%	0.0%	0.0%	0.2%	0.1%
85+	100.0%	100.0%	0.0%	0.0%	0.0%	0.0%	0.0%	0.0%	0.0%	0.0%
2010										
0-19	100.0%	89.5%	0.4%	2.6%	0.0%	0.7%	0.1%	0.2%	1.6%	7.4%
20-64	100.0%	95.3%	0.2%	1.1%	0.1%	0.6%	0.1%	0.0%	0.4%	3.4%
65+	100.0%	97.8%	0.2%	0.8%	0.1%	0.2%	0.0%	0.0%	0.5%	1.2%
85+	100.0%	97.3%	0.9%	1.8%	0.0%	0.9%	0.0%	0.0%	0.9%	0.0%
E. Population Growth										
2000-2010, Change										
0-19	94	-86	5	42	-6	18	2	5	23	133
20-64	855	699	4	20	-2	20	4	0	-2	132
65+	367	348	2	3	0	-1	0	0	4	14
85+	70	67	1	2	0	1	0	0	1	0
Total	1,316	961	11	65	-8	37	6	5	25	279
2000-2010, Pct Change										
0-19	3.6%	-3.4%	100.0%	144.8%	-100.0%	1800.0%	0.0%	500.0%	109.5%	198.5%
20-64	16.9%	14.2%	50.0%	42.6%	-28.6%	142.9%	400.0%	0.0%	-8.3%	197.0%
65+	42.1%	40.3%	0.0%	42.9%	0.0%	-25.0%	0.0%	0.0%	200.0%	1400.0%
85+	166.7%	159.5%	0.0%	0.0%	0.0%	0.0%	0.0%	0.0%	0.0%	0.0%
Total	15.5%	11.6%	84.6%	78.3%	-57.1%	194.7%	600.0%	250.0%	53.2%	206.7%

Source: Decennial Census 2010, 2000, American Community Survey 2008-2012

Prepared for the Pennsylvania State Library by The Pennsylvania State Data Center, 9/2014

Reference Data

East Berlin Community Library

	Total Population	White, Non- Hispanic	Black, Non- Hispanic	Other, Non- Hispanic	Detail for Other, Non-Hispanic					Hispanic or Latino
					AIAN	Asian	NHOPI	Some Other	Two or More	
								Race	Races	
F. Population by Library-Defined Age Groups, 2010										
0-5	706	618	1	14	0	3	0	1	10	73
6-10	657	575	3	20	0	7	0	1	12	59
11-13	469	433	3	13	0	3	0	2	8	20
14-18	749	683	3	23	0	6	2	2	13	40
19-32	1,400	1,287	1	11	2	5	0	0	4	101
33-45	1,877	1,775	5	25	0	13	2	1	9	72
46-64	2,734	2,662	6	32	3	16	3	0	10	34
65-84	1,127	1,103	1	8	1	2	0	0	5	15
85+	112	109	1	2	0	1	0	0	1	0
Total	9,831	9,245	24	148	6	56	7	7	72	414
G. Population by 5-Year Age Cohorts, 2010										
0-4	591	518	1	13	0	3	0	1	9	59
5-9	649	570	2	17	0	7	0	1	9	60
10-14	732	667	5	20	0	4	0	2	14	40
15-19	716	652	2	21	0	5	2	2	12	41
20-24	480	449	1	4	1	2	0	0	1	26
25-29	482	435	0	3	1	1	0	0	1	44
30-34	559	517	0	4	0	2	0	1	1	38
35-39	680	637	2	9	0	5	0	0	4	32
40-44	787	751	3	12	0	7	1	0	4	21
45-49	890	859	1	16	2	8	2	0	4	14
50-54	791	767	0	10	1	6	1	0	2	14
55-59	661	648	2	6	0	2	1	0	3	5
60-64	574	563	3	3	0	1	0	0	2	5
65-69	450	441	1	4	1	0	0	0	3	4
70-74	280	275	0	2	0	0	0	0	2	3
75-79	237	235	0	1	0	1	0	0	0	1
80-84	160	152	0	1	0	1	0	0	0	7
85-89	73	71	1	1	0	1	0	0	0	0
90-94	34	33	0	1	0	0	0	0	1	0
95-99	5	5	0	0	0	0	0	0	0	0
100+	0	0	0	0	0	0	0	0	0	0
Total	9,831	9,245	24	148	6	56	7	7	72	414

Source: Decennial Census 2010, 2000, American Community Survey 2008-2012
 Prepared for the Pennsylvania State Library by The Pennsylvania State Data Center, 9/2014

Reference Data

East Berlin Community Library

H. Income Distribution, 2008-2012

Range (in thousands)	Households	Pct of Total
<\$10K	127	3.5%
\$10K to <\$25K	407	11.1%
\$25K to <\$50K	797	21.8%
\$50K to <\$75K	912	24.9%
\$75K to <\$100K	566	15.5%
\$100K to <\$150K	596	16.3%
\$150K+	252	6.9%

I. Household Type, 2010

Household Type	2000	2000pct	2010	2010pct
Total Households	3,100	100.0%	3,649	100.0%
Family Households	2,434	78.5%	2,829	77.5%
Husband-wife, no children w/children	962	31.0%	961	26.3%
Female head, no husband, w/ children	164	5.3%	168	4.6%
Male head, no wife, w/ children	71	2.3%	99	2.7%
Without children	1,237	39.9%	1,601	43.9%
Nonfamily households	666	21.5%	820	22.5%
Living alone	525	16.9%	641	17.6%
Other nonfamily	141	4.5%	179	4.9%

J. Household Type by Race and Ethnicity, 2008-2012

Household Type	White, NH	Black, NH	Other, NH	Hispanic
Total Households	3,525	10	80	86
Husband wife family	65.1%	70.0%	58.8%	62.8%
Family with male head, no wife	4.4%	10.0%	8.8%	11.6%
family with female head, no husband	7.6%	0.0%	20.0%	18.6%
Living alone	17.8%	20.0%	11.3%	5.8%
Other nonfamily	5.0%	0.0%	1.3%	1.2%

K. Poverty, 2008-2012

Families	Poverty	PA
All families	3.8%	9.1%
Families w/ related children	6.2%	15.3%
Female householder, no husband present	13.8%	28.8%
Female householder, no husband present, w/ related children	20.1%	39.2%
All people	5.0%	13.1%
Under 18 years	6.7%	18.4%
18 to 64 years	3.8%	12.3%
65 years and over	7.5%	8.4%

L. Educational Attainment by Race and Ethnicity, 2008-2012

Education Level	White, NH	Black	Other	Hispanic	Total
Population 25 years and over	6,486	74	175	159	6,750
Less than high school	13.0%	5.4%	57%	62.9%	14.0%
High school graduate (includes equivalency)	42.9%	12.2%	19%	25.2%	42.0%
Some college or associates degree	27.8%	48.6%	17%	11.9%	27.7%
Bachelors degree or higher	16.3%	33.8%	7%	0.0%	16.2%

M. Occupation, 2008-2012

Occupation	Estimate	Percent
Civilian population age 16 years and over	5,149	100.0%
Management, professional, and related occupations	1,497	29.1%
Service occupations	932	18.1%
Sales and office occupations	1,285	25.0%
Farming, fishing, and forestry occupations	44	0.9%
Construction, extraction, maintenance, and repair occupations	467	9.1%
Production, transportation, and material moving occupations	924	17.9%

N. Class of Worker, 2008-2012

Occupation	Estimate	Percent
Civilian population age 16 years and over	5,149	100.0%
Private, for profit, wage and salary employee	3,652	70.9%
Private, not for profit, wage and salary employee	600	11.7%
Private, for profit, wage and salary self-employed in own business	105	2.0%
Government workers	482	9.4%
Self-employed in own not incorporated business	307	6.0%
Unpaid family workers in family business	3	0.1%