

Demographic Profile Ellwood City Area Public Library

Population Growth: The total population of the Ellwood City Area Public Library service area decreased by -3.1 percent over the past decade to 17,581; this decline rate was lower than the statewide rate of 3.4 percent.

Age and Sex: In 2010, the Ellwood City Area Public Library service area had a total population of 17,581 - 8,510 males (48.4 percent) and 9,071 females (51.6 percent). The age structure of the population in 2010 was as follows: 22.8 percent of the population was under 20 years old, 58.9 percent was 20 to 64 years old and 18.3 percent was 65 years or older.

Race and Ethnicity: For people reporting one race alone, not of Hispanic ethnicity, 96.6 percent were White; .8 percent were Black or African American; 1.5 percent were Other Race Alone.¹ A total of 195 or 1.1 percent of the population were Hispanic.²

Households: In 2010, there were 7,428 households in the Ellwood City Area Public Library service area. The average household size was 2.37 people. Families made up 65.6 percent of the households. This figure includes both families with (24.5 percent) and without (41.1 percent) children. Of families with children less than 18 years old, 16.9 percent were married-couple families, 5.6 percent were female householder families with no husband present, and the remaining (2.0 percent) were male-headed households with no wife present.

Education: The educational attainment of the population 25 years and over was lower in the Ellwood City Area Public Library service area than in Pennsylvania. During the period 2008-2012, 17.4 percent of residents had earned a Bachelor's degree or higher, compared with 27.0 percent statewide. A total of 1,334 or 10.4 percent had not completed high school, compared with 11.7 percent for the commonwealth as a whole.

Income and Poverty: Households with incomes of less than \$25,000 (29.7 percent) made up the largest percent of households in the Ellwood City Area Public Library service area in 2008-2012. For comparison, 23.6 percent of commonwealth households were in this range during the period.

In 2008-2012, the overall poverty rate for the Ellwood City Area Public Library service area was lower than Pennsylvania (12.0 percent compared to 13.1 percent). The poverty rate for the population under 18 years of age was 20.3 percent, compared with 9.9 percent of people 18 to 64 years and 10.0 percent for those aged 65 years and over. A total of 491 or 9.9 percent of all families had incomes below poverty level. In 2008-2012, 20.0 percent of families with related children and 50.8 percent of families with a female householder and no husband with related children present had incomes below the poverty level.

Class of Worker and Occupation: In 2008-2012, 84.9 percent of the workforce was private wage and salary workers; 9.7 percent were federal, state, or local government workers; and 5.2 percent were self-employed in their own (not incorporated) business.

The top occupation group for the civilian employed population 16 years and over in the Ellwood City Area Public Library service area in 2008-2012 was Management, business, science, and arts (27.2 percent).

¹ Other race includes those who identified themselves as American Indian/Alaska Native, Asian, Native Hawaiian/Other Pacific Islander, Some Other Race and Two or More Races on the 2010 Census form.

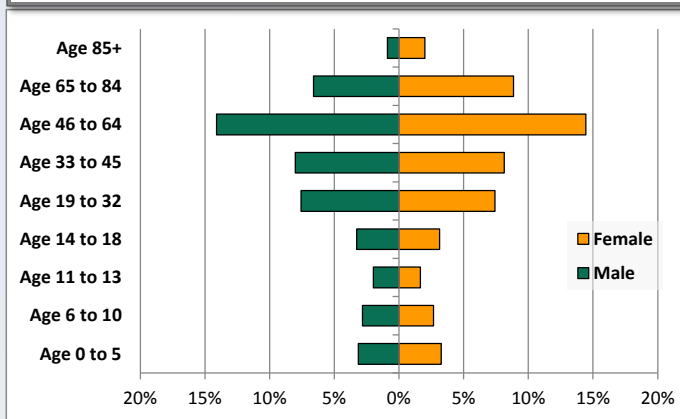
² People of Hispanic origin may be of any race.

Demographic Profile

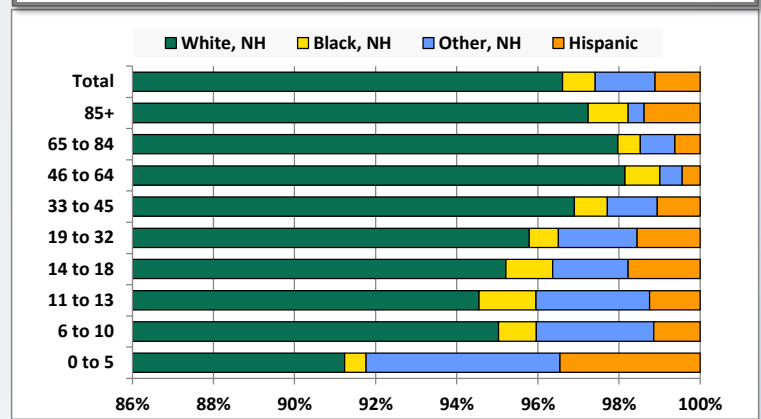
Ellwood City Area Public Library

Key Indicators		
	2000	2010
Population Growth		
Total Population	18,146	17,581
10-Year Growth	N/A	-3.1%
Diversity		
White Alone, Non-Hispanic	98.0%	96.6%
Black Alone, Non-Hispanic	0.7%	0.8%
Other Race Alone, Non-Hispanic	0.7%	1.5%
Percent Hispanic	0.5%	1.1%
Aging		
Percent 65 Years and Over	18.6%	18.3%
Households		
Percent Married Couple with Own Children	21.5%	16.9%
Percent Living Alone	27.4%	29.8%

Population by Library-Defined Age Group, 2010



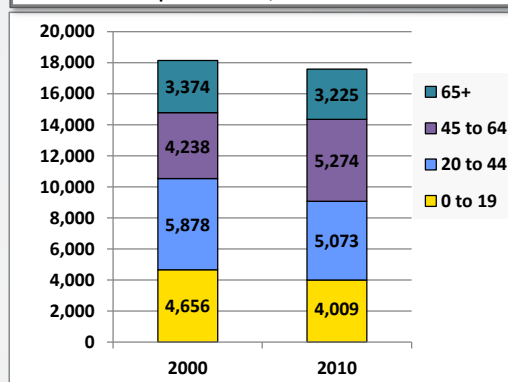
Race/Ethnicity by Library-Defined Age Group, 2010



Population Growth by Library-Defined Age Group, 2000 to 2010

Age Group	2010	Change	
		Numeric	Percent
Total	17,581	-565	-3.1%
85+	507	147	40.8%
65 to 84	2,718	-296	-9.8%
46 to 64	5,019	1,062	26.8%
33 to 45	2,839	-778	-21.5%
19 to 32	2,634	-95	-3.5%
14 to 18	1,128	-172	-13.2%
11 to 13	642	-124	-16.2%
6 to 10	965	-208	-17.7%
0 to 5	1,129	-101	-8.2%

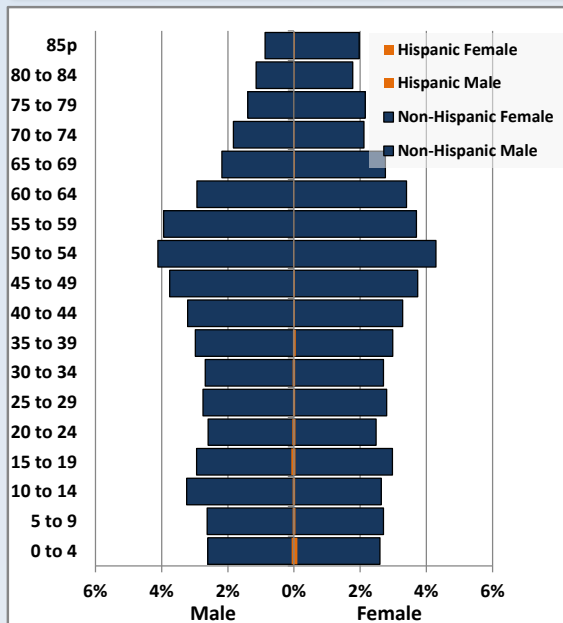
Population Total, 2000 and 2010



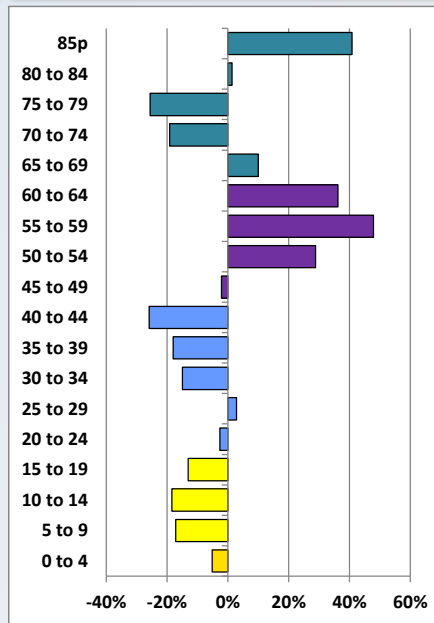
Demographic Profile

Ellwood City Area Public Library

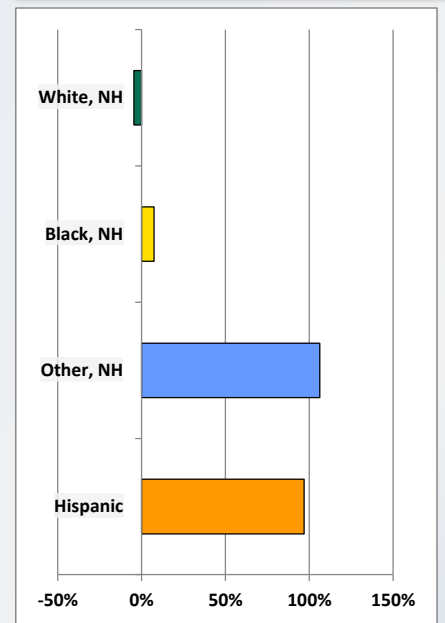
Population by 5-Year Age Cohorts



Pop Change by Age, 2000 to 2010

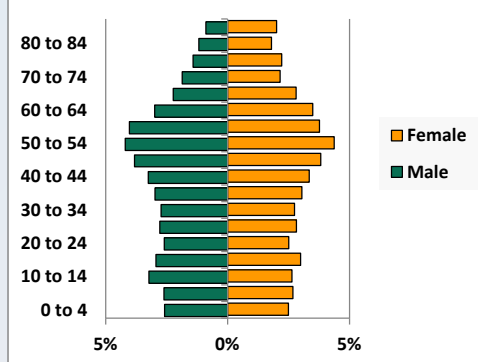


Pop Change by Race/Ethnicity, 2000 to 2010

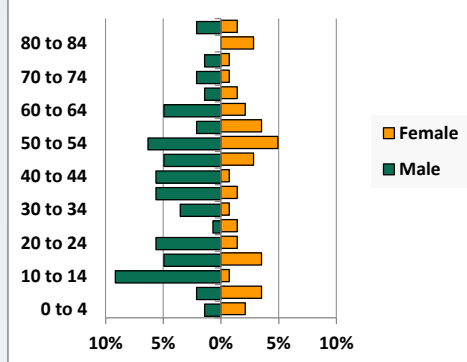


Population by Age, Race and Ethnicity 2010

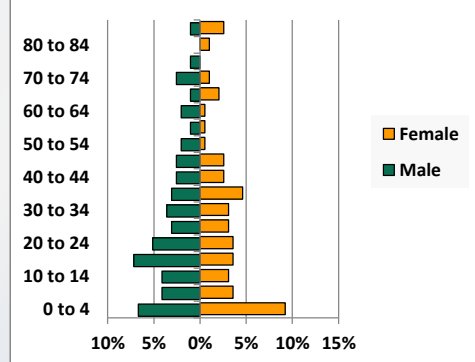
White, Not Hispanic



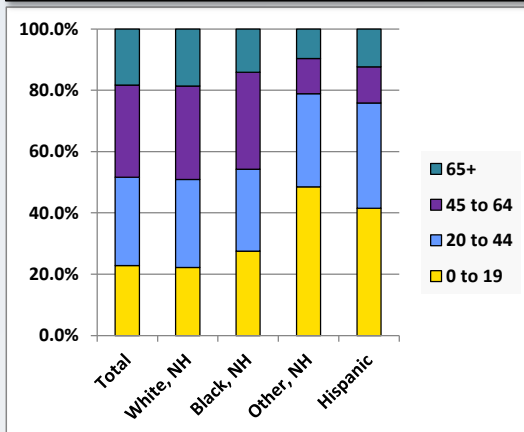
Black, Non-Hispanic



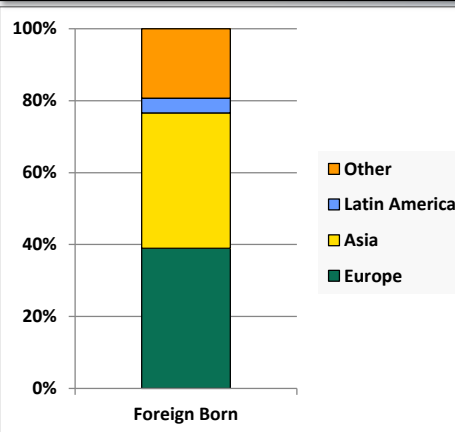
Hispanic



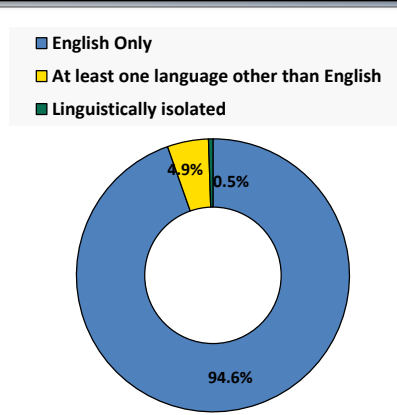
Age by Race and Ethnicity, 2010



Foreign Born, 2010



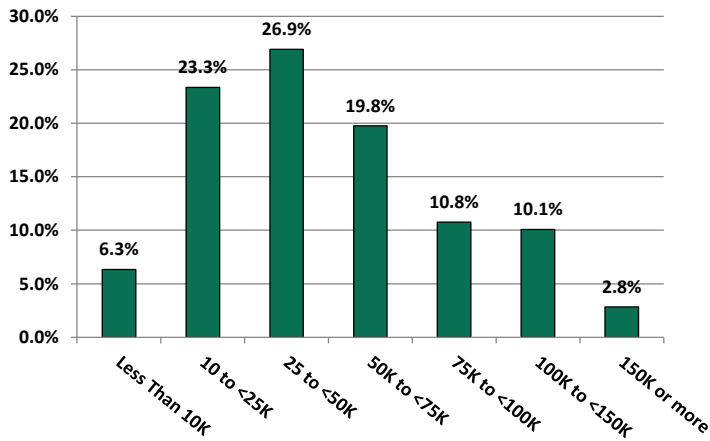
Household Language, 2010



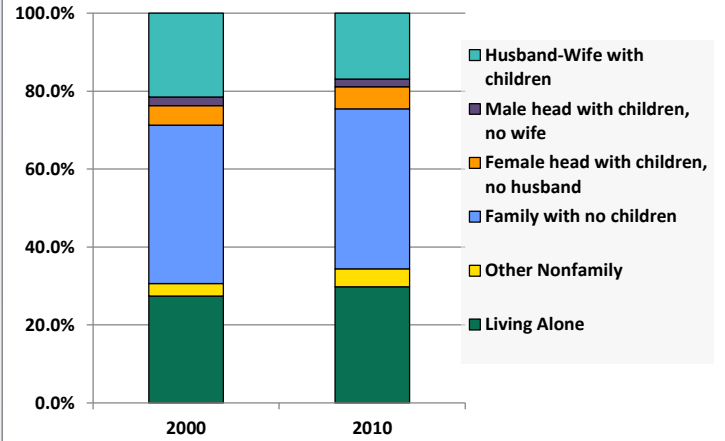
Demographic Profile

Ellwood City Area Public Library

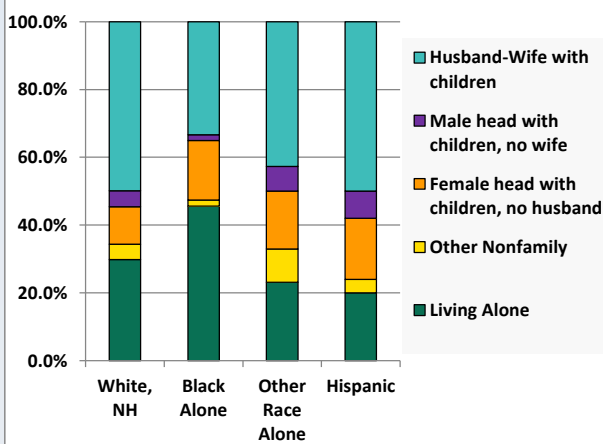
Household Income Distribution, 2008-2012



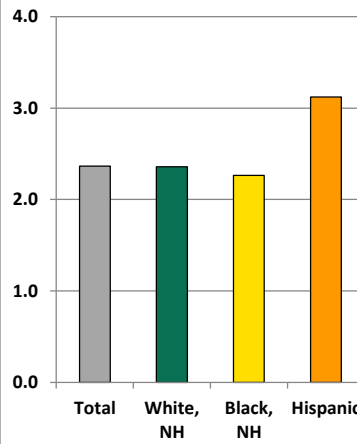
Household Type, 2000 and 2010



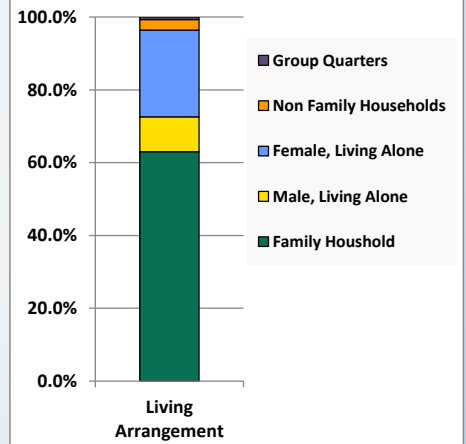
Household Type by Race/Ethnicity, 2010



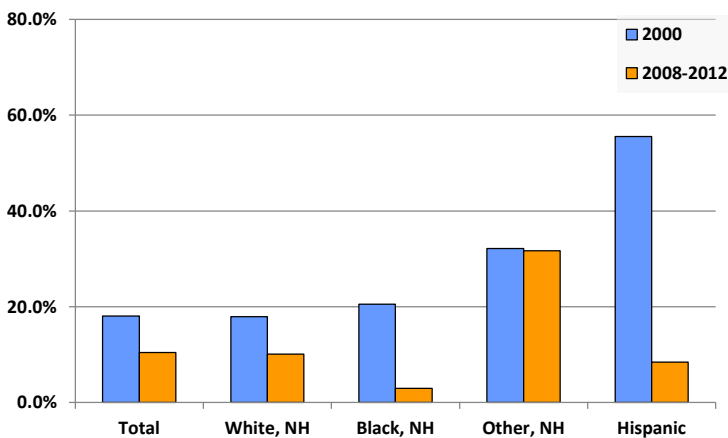
Average Household Size, 2010



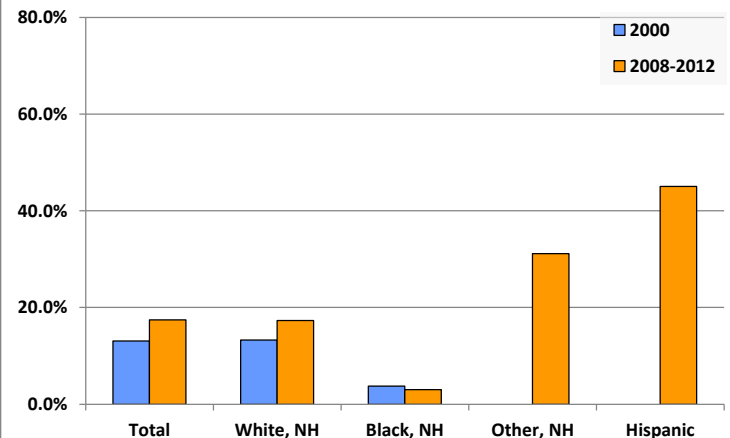
Living Arrangements 65+, 2008-2012



Percent of Adults that Did Not Complete High School



Percent of Adults Who Attained a Bachelor's Degree or Higher



Reference Data

Ellwood City Area Public Library

					Detail for Other, Non-Hispanic					
	Total Population	White, Non- Hispanic	Black, Non- Hispanic	Other, Non- Hispanic	AIAN	Asian	NHOPI	Some Other	Two or More	Hispanic or
								Race	Races	Latino
A. Total Population										
2000 Total	18,146	17,789	132	126	11	38	0	2	75	99
2000 pct of Total	100.0%	98.0%	0.7%	0.7%	0.1%	0.2%	0.0%	0.0%	0.4%	0.5%
2010 Total	17,581	16,984	142	260	12	66	1	3	178	195
2010 pct of Total	100.0%	96.6%	0.8%	1.5%	0.1%	0.4%	0.0%	0.0%	1.0%	1.1%
B. Population by Major Age Groups by Race and Ethnicity										
2000										
0-19	4,656	4,530	39	51	1	8	0	1	41	36
20-64	10,116	9,923	72	68	10	28	0	1	29	53
65+	3,374	3,336	21	7	0	2	0	0	5	10
85+	360	354	3	1	0	0	0	0	1	2
2010										
0-19	4,009	3,763	39	126	2	18	0	3	103	81
20-64	10,347	10,065	83	109	8	41	1	0	59	90
65+	3,225	3,156	20	25	2	7	0	0	16	24
85+	507	493	5	2	0	0	0	0	2	7
C. Age Mix for Each Racial and Ethnic Group										
2000										
0-19	25.7%	25.5%	29.5%	40.5%	9.1%	21.1%	0.0%	50.0%	54.7%	36.4%
20-64	55.7%	55.8%	54.5%	54.0%	90.9%	73.7%	0.0%	50.0%	38.7%	53.5%
65+	18.6%	18.8%	15.9%	5.6%	0.0%	5.3%	0.0%	0.0%	6.7%	10.1%
85+	2.0%	2.0%	2.3%	0.8%	0.0%	0.0%	0.0%	0.0%	1.3%	2.0%
2010										
0-19	22.8%	22.2%	27.5%	48.5%	16.7%	27.3%	0.0%	100.0%	57.9%	41.5%
20-64	58.9%	59.3%	58.5%	41.9%	66.7%	62.1%	100.0%	0.0%	33.1%	46.2%
65+	18.3%	18.6%	14.1%	9.6%	16.7%	10.6%	0.0%	0.0%	9.0%	12.3%
85+	2.9%	2.9%	3.5%	0.8%	0.0%	0.0%	0.0%	0.0%	1.1%	3.6%
D. Racial and Ethnic Composition of Each Age Group										
2000										
0-19	100.0%	97.3%	0.8%	1.1%	0.0%	0.2%	0.0%	0.0%	0.9%	0.8%
20-64	100.0%	98.1%	0.7%	0.7%	0.1%	0.3%	0.0%	0.0%	0.3%	0.5%
65+	100.0%	98.9%	0.6%	0.2%	0.0%	0.1%	0.0%	0.0%	0.1%	0.3%
85+	100.0%	98.3%	0.8%	0.3%	0.0%	0.0%	0.0%	0.0%	0.3%	0.6%
2010										
0-19	100.0%	93.9%	1.0%	3.1%	0.0%	0.4%	0.0%	0.1%	2.6%	2.0%
20-64	100.0%	97.3%	0.8%	1.1%	0.1%	0.4%	0.0%	0.0%	0.6%	0.9%
65+	100.0%	97.9%	0.6%	0.8%	0.1%	0.2%	0.0%	0.0%	0.5%	0.7%
85+	100.0%	97.2%	1.0%	0.4%	0.0%	0.0%	0.0%	0.0%	0.4%	1.4%
E. Population Growth										
2000-2010, Change										
0-19	-647	-767	0	75	1	10	0	2	62	45
20-64	231	142	11	41	-2	13	1	-1	30	37
65+	-149	-180	-1	18	2	5	0	0	11	14
85+	147	139	2	1	0	0	0	0	1	5
Total	-565	-805	10	134	1	28	1	1	103	96
2000-2010, Pct Change										
0-19	-13.9%	-16.9%	0.0%	147.1%	100.0%	125.0%	0.0%	200.0%	151.2%	125.0%
20-64	2.3%	1.4%	15.3%	60.3%	-20.0%	46.4%	0.0%	-100.0%	103.4%	69.8%
65+	-4.4%	-5.4%	-4.8%	257.1%	0.0%	250.0%	0.0%	0.0%	220.0%	140.0%
85+	40.8%	39.3%	66.7%	100.0%	0.0%	0.0%	0.0%	0.0%	100.0%	250.0%
Total	-3.1%	-4.5%	7.6%	106.3%	9.1%	73.7%	0.0%	50.0%	137.3%	97.0%

Source: Decennial Census 2010, 2000, American Community Survey 2008-2012

Prepared for the Pennsylvania State Library by The Pennsylvania State Data Center, 9/2014

Reference Data

Ellwood City Area Public Library

	Total Population	White, Non- Hispanic	Black, Non- Hispanic	Other, Non- Hispanic	Detail for Other, Non-Hispanic					Hispanic or Latino
					AIAN	Asian	NHOPI	Some Other	Two or More	
								Race	Races	
F. Population by Library-Defined Age Groups, 2010										
0-5	1,129	1,030	6	54	1	8	0	1	44	39
6-10	965	917	9	28	1	5	0	2	20	11
11-13	642	607	9	18	0	3	0	0	15	8
14-18	1,128	1,074	13	21	0	2	0	0	19	20
19-32	2,634	2,523	19	51	4	17	0	0	30	41
33-45	2,839	2,751	23	35	2	13	1	0	19	30
46-64	5,019	4,926	43	28	2	11	0	0	15	22
65-84	2,718	2,663	15	23	2	7	0	0	14	17
85+	507	493	5	2	0	0	0	0	2	7
Total	17,581	16,984	142	260	12	66	1	3	178	195
G. Population by 5-Year Age Cohorts, 2010										
0-4	947	864	5	47	1	7	0	1	38	31
5-9	952	898	8	31	1	4	0	2	24	15
10-14	1,048	995	14	25	0	5	0	0	20	14
15-19	1,062	1,006	12	23	0	2	0	0	21	21
20-24	909	867	10	15	2	1	0	0	12	17
25-29	988	950	3	23	2	11	0	0	10	12
30-34	960	928	6	13	1	6	0	0	6	13
35-39	1,064	1,023	10	16	1	5	1	0	9	15
40-44	1,152	1,121	9	12	0	7	0	0	5	10
45-49	1,327	1,296	11	10	2	3	0	0	5	10
50-54	1,483	1,456	16	6	0	3	0	0	3	5
55-59	1,346	1,324	8	11	0	5	0	0	6	3
60-64	1,118	1,100	10	3	0	0	0	0	3	5
65-69	874	857	4	7	1	3	0	0	3	6
70-74	701	683	4	7	0	3	0	0	4	7
75-79	627	617	3	5	0	1	0	0	4	2
80-84	516	506	4	4	1	0	0	0	3	2
85-89	362	352	5	2	0	0	0	0	2	3
90-94	110	109	0	0	0	0	0	0	0	1
95-99	31	31	0	0	0	0	0	0	0	0
100+	4	1	0	0	0	0	0	0	0	3
Total	17,581	16,984	142	260	12	66	1	3	178	195

Source: Decennial Census 2010, 2000, American Community Survey 2008-2012

Prepared for the Pennsylvania State Library by The Pennsylvania State Data Center, 9/2014

Reference Data

Ellwood City Area Public Library

H. Income Distribution, 2008-2012

Range (in thousands)	Households	Pct of Total
<\$10K	462	6.3%
\$10K to <\$25K	1,705	23.3%
\$25K to <\$50K	1,965	26.9%
\$50K to <\$75K	1,443	19.8%
\$75K to <\$100K	786	10.8%
\$100K to <\$150K	735	10.1%
\$150K+	207	2.8%

I. Household Type, 2010

Household Type	2000	2000pct	2010	2010pct
Total Households	7,358	100.0%	7,428	100.0%
Family Households	5,104	69.4%	4,873	65.6%
Husband-wife, no children w/children	1,585	21.5%	1,255	16.9%
Female head, no husband, w/ children	371	5.0%	416	5.6%
Male head, no wife, w/ children	159	2.2%	150	2.0%
Without children	2,989	40.6%	3,052	41.1%
Nonfamily households	2,254	30.6%	2,555	34.4%
Living alone	2,016	27.4%	2,217	29.8%
Other nonfamily	238	3.2%	338	4.6%

J. Household Type by Race and Ethnicity, 2008-2012

Household Type	White, NH	Black, NH	Other, NH	Hispanic
Total Households	7,254	57	82	50
Husband wife family	49.9%	33.3%	42.7%	50.0%
Family with male head, no wife	4.7%	1.8%	7.3%	8.0%
family with female head, no husband	11.0%	17.5%	17.1%	18.0%
Living alone	29.8%	45.6%	23.2%	20.0%
Other nonfamily	4.5%	1.8%	9.8%	4.0%

K. Poverty, 2008-2012

Families	Poverty	PA
All families	9.9%	9.1%
Families w/ related children	20.0%	15.3%
Female householder, no husband present	32.9%	28.8%
Female householder, no husband present, w/ related children	50.8%	39.2%
All people	12.0%	13.1%
Under 18 years	20.3%	18.4%
18 to 64 years	9.9%	12.3%
65 years and over	10.0%	8.4%

L. Educational Attainment by Race and Ethnicity, 2008-2012

Education Level	White, NH	Black	Other	Hispanic	Total
Population 25 years and over	12,505	67	199	71	12,809
Less than high school	10.1%	3.0%	32%	8.5%	10.4%
High school graduate (includes equivalency)	47.7%	43.3%	20%	38.0%	47.2%
Some college or associates degree	24.9%	50.7%	17%	8.5%	24.9%
Bachelors degree or higher	17.3%	3.0%	31%	45.1%	17.4%

M. Occupation, 2008-2012

Occupation	Estimate	Percent
Civilian population age 16 years and over	8,194	100.0%
Management, professional, and related occupations	2,225	27.2%
Service occupations	1,511	18.4%
Sales and office occupations	1,820	22.2%
Farming, fishing, and forestry occupations	11	0.1%
Construction, extraction, maintenance, and repair occupations	845	10.3%
Production, transportation, and material moving occupations	1,782	21.7%

N. Class of Worker, 2008-2012

Occupation	Estimate	Percent
Civilian population age 16 years and over	8,194	100.0%
Private, for profit, wage and salary employee	6,006	73.3%
Private, not for profit, wage and salary employee	785	9.6%
Private, for profit, wage and salary self-employed in own business	169	2.1%
Government workers	797	9.7%
Self-employed in own not incorporated business	429	5.2%
Unpaid family workers in family business	8	0.1%