

## Demographic Profile Evans City Public Library

**Population Growth:** The total population of the Evans City Public Library service area decreased by -7.4 percent over the past decade to 4,758; this decline rate was lower than the statewide rate of 3.4 percent.

**Age and Sex:** In 2010, the Evans City Public Library service area had a total population of 4,758 - 2,373 males (49.9 percent) and 2,385 females (50.1 percent). The age structure of the population in 2010 was as follows: 24.5 percent of the population was under 20 years old, 61.2 percent was 20 to 64 years old and 14.3 percent was 65 years or older.

**Race and Ethnicity:** For people reporting one race alone, not of Hispanic ethnicity, 97.9 percent were White; .1 percent were Black or African American; 1.4 percent were Other Race Alone.<sup>1</sup> A total of 28 or .6 percent of the population were Hispanic.<sup>2</sup>

**Households:** In 2010, there were 1,899 households in the Evans City Public Library service area. The average household size was 2.51 people. Families made up 70.3 percent of the households. This figure includes both families with (27.8 percent) and without (42.5 percent) children. Of families with children less than 18 years old, 21.4 percent were married-couple families, 4.9 percent were female householder families with no husband present, and the remaining (1.4 percent) were male-headed households with no wife present.

**Education:** The educational attainment of the population 25 years and over was lower in the Evans City Public Library service area than in Pennsylvania. During the period 2008-2012, 21.5 percent of residents had earned a Bachelor's degree or higher, compared with 27.0 percent statewide. A total of 309 or 8.9 percent had not completed high school, compared with 11.7 percent for the commonwealth as a whole.

**Income and Poverty:** Households with incomes of \$50,000 to \$74,999 (24.5 percent) made up the largest percent of households in the Evans City Public Library service area in 2008-2012. For comparison, 18.7 percent of commonwealth households were in this range during the period.

In 2008-2012, the overall poverty rate for the Evans City Public Library service area was lower than Pennsylvania (5.8 percent compared to 13.1 percent). The poverty rate for the population under 18 years of age was 6.7 percent, compared with 5.5 percent of people 18 to 64 years and 5.5 percent for those aged 65 years and over. A total of 42 or 3.1 percent of all families had incomes below poverty level. In 2008-2012, 4.8 percent of families with related children and 10.8 percent of families with a female householder and no husband with related children present had incomes below the poverty level.

**Class of Worker and Occupation:** In 2008-2012, 83.7 percent of the workforce was private wage and salary workers; 9.3 percent were federal, state, or local government workers; and 6.7 percent were self-employed in their own (not incorporated) business.

The top occupation group for the civilian employed population 16 years and over in the Evans City Public Library service area in 2008-2012 was Management, business, science, and arts (30.8 percent).

---

<sup>1</sup> Other race includes those who identified themselves as American Indian/Alaska Native, Asian, Native Hawaiian/Other Pacific Islander, Some Other Race and Two or More Races on the 2010 Census form.

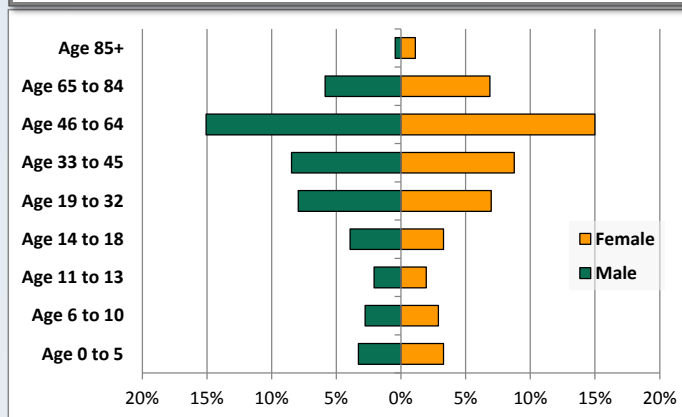
<sup>2</sup> People of Hispanic origin may be of any race.

# Demographic Profile

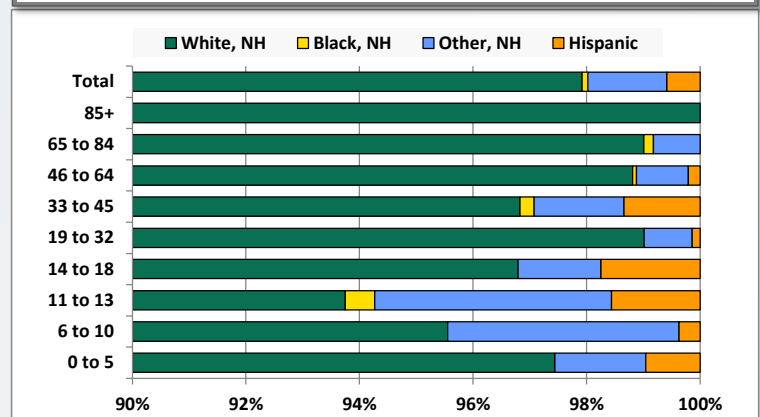
Evans City Public Library

Key Indicators		
	2000	2010
<b>Population Growth</b>		
Total Population	5,140	4,758
10-Year Growth	N/A	-7.4%
<b>Diversity</b>		
White Alone, Non-Hispanic	98.8%	97.9%
Black Alone, Non-Hispanic	0.2%	0.1%
Other Race Alone, Non-Hispanic	0.9%	1.4%
Percent Hispanic	0.2%	0.6%
<b>Aging</b>		
Percent 65 Years and Over	12.8%	14.3%
<b>Households</b>		
Percent Married Couple with Own Children	28.5%	21.4%
Percent Living Alone	22.3%	24.2%

Population by Library-Defined Age Group, 2010



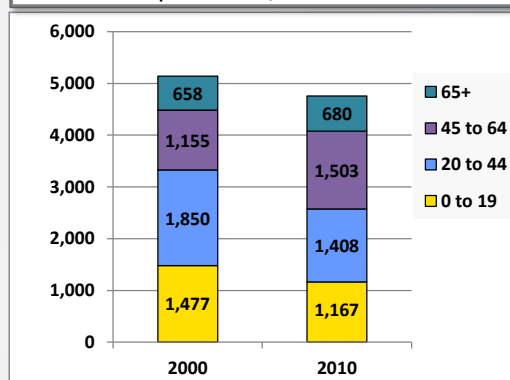
Race/Ethnicity by Library-Defined Age Group, 2010



Population Growth by Library-Defined Age Group, 2000 to 2010

Age Group	2010	Change	
		Numeric	Percent
Total	4,758	-382	-7.4%
85+	74	19	34.5%
65 to 84	606	3	0.5%
46 to 64	1,430	371	35.0%
33 to 45	820	-362	-30.6%
19 to 32	710	-105	-12.9%
14 to 18	343	-34	-9.0%
11 to 13	192	-30	-13.5%
6 to 10	270	-141	-34.3%
0 to 5	313	-103	-24.8%

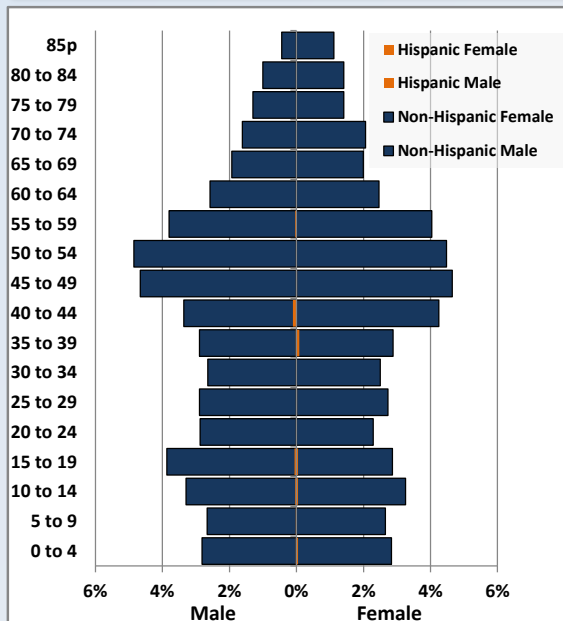
Population Total, 2000 and 2010



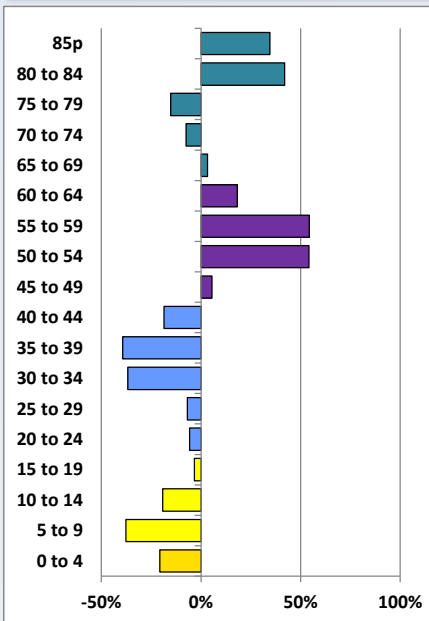
# Demographic Profile

Evans City Public Library

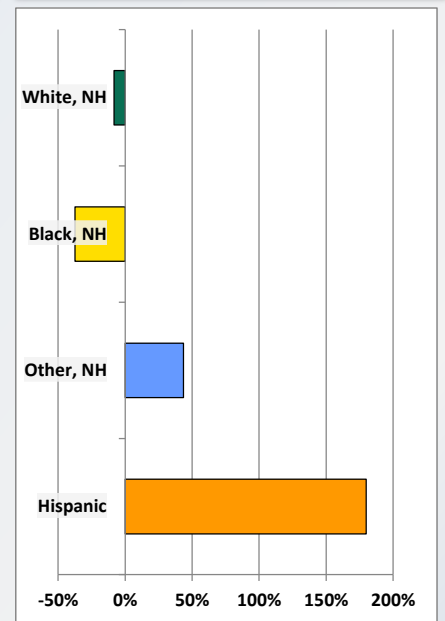
Population by 5-Year Age Cohorts



Pop Change by Age, 2000 to 2010

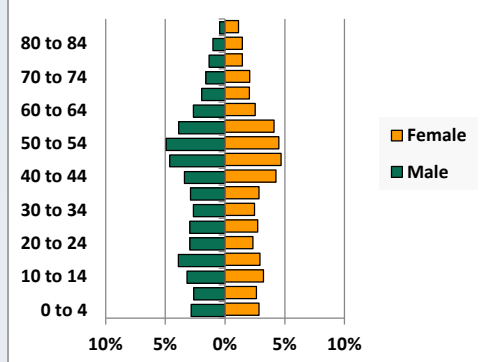


Pop Change by Race/Ethnicity, 2000 to 2010

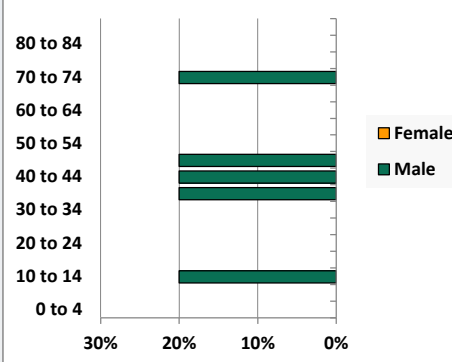


Population by Age, Race and Ethnicity 2010

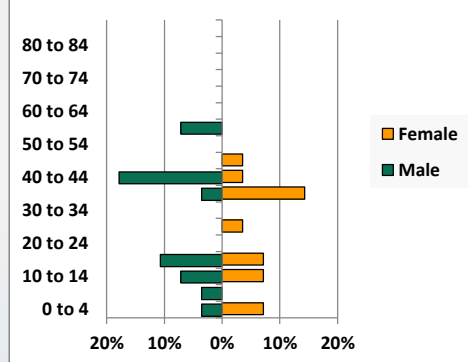
White, Not Hispanic



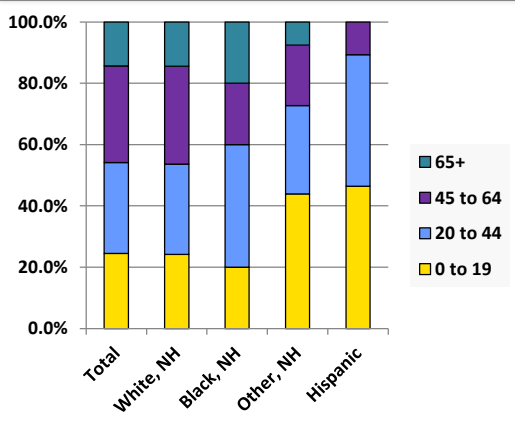
Black, Non-Hispanic



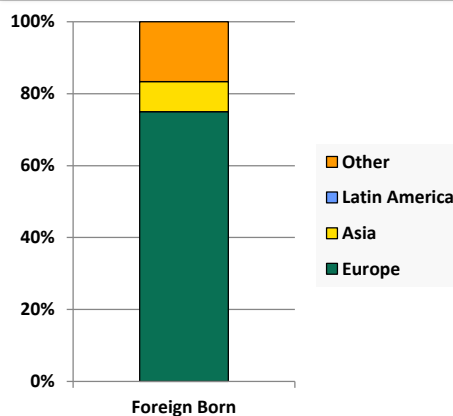
Hispanic



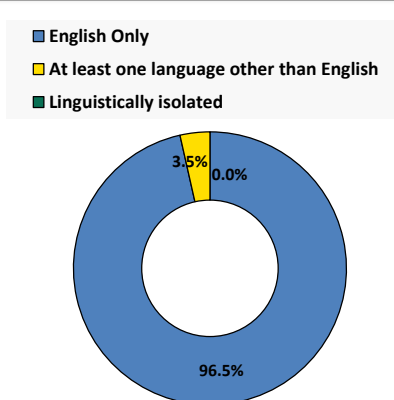
Age by Race and Ethnicity, 2010



Foreign Born, 2010



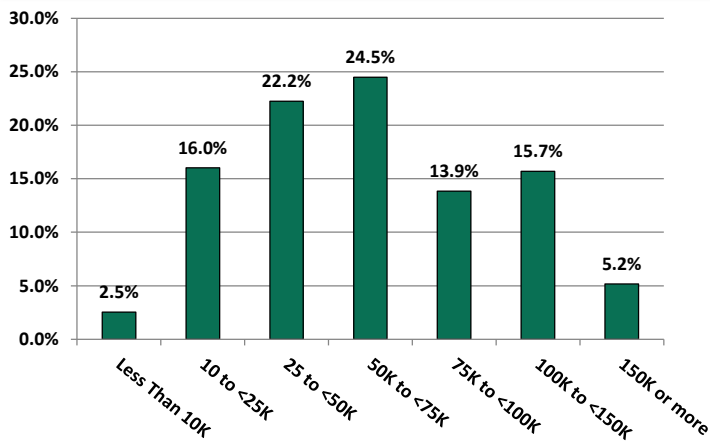
Household Language, 2010



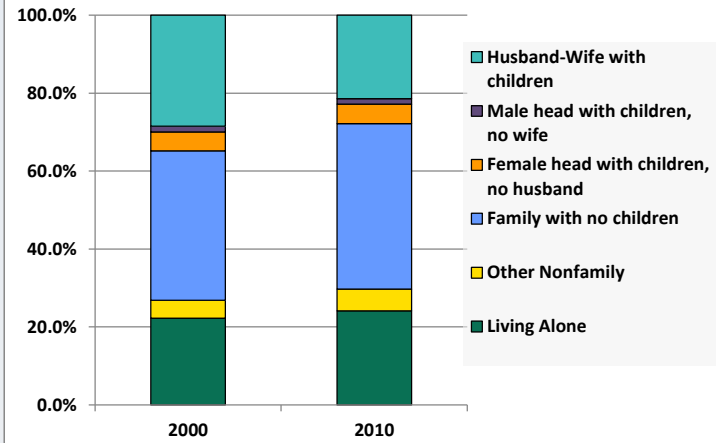
# Demographic Profile

Evans City Public Library

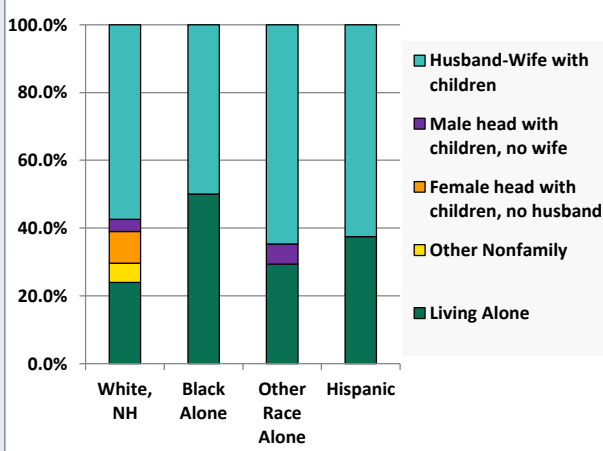
Household Income Distribution, 2008-2012



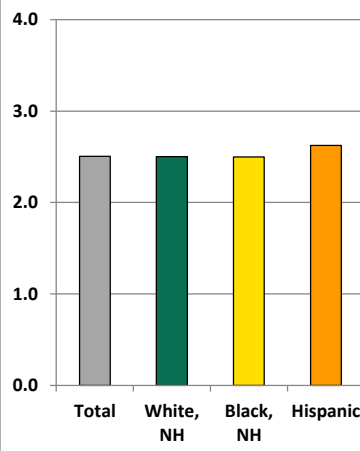
Household Type, 2000 and 2010



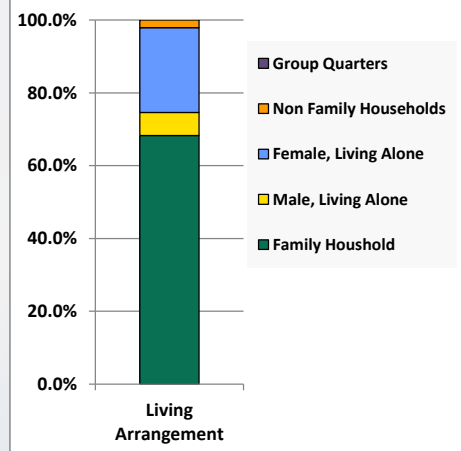
Household Type by Race/Ethnicity, 2010



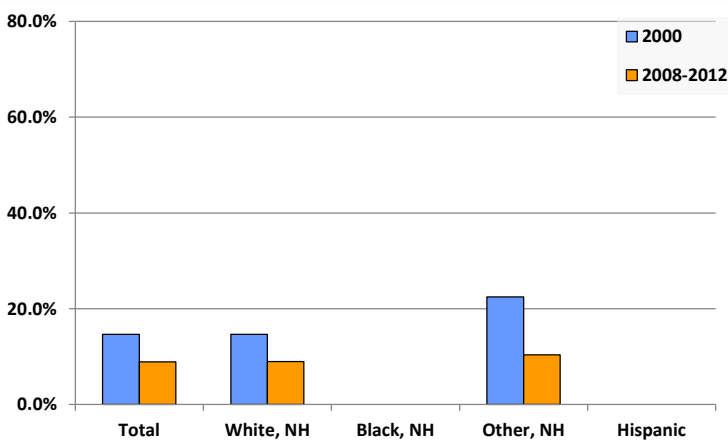
Average Household Size, 2010



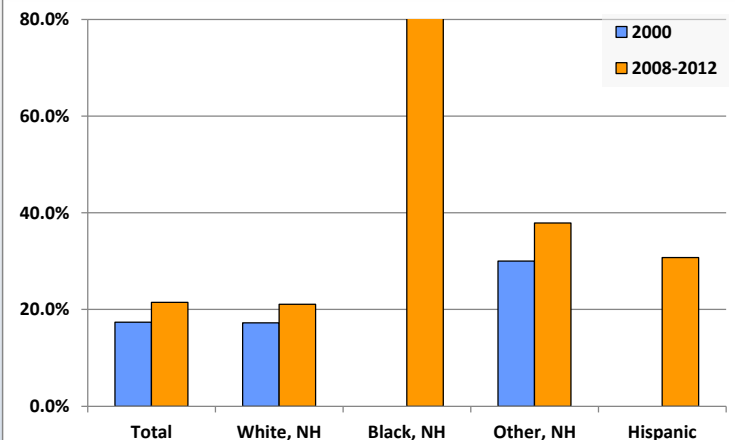
Living Arrangements 65+, 2008-2012



Percent of Adults that Did Not Complete High School



Percent of Adults Who Attained a Bachelor's Degree or Higher



# Reference Data

## Evans City Public Library

					Detail for Other, Non-Hispanic					
	Total Population	White, Non- Hispanic	Black, Non- Hispanic	Other, Non- Hispanic	AIAN	Asian	NHOPI	Some Other	Two or More	Hispanic or
								Race	Races	Latino
A. Total Population										
2000 Total	5,140	5,076	8	46	8	20	1	2	15	10
2000 pct of Total	100.0%	98.8%	0.2%	0.9%	0.2%	0.4%	0.0%	0.0%	0.3%	0.2%
2010 Total	4,758	4,659	5	66	3	21	2	0	40	28
2010 pct of Total	100.0%	97.9%	0.1%	1.4%	0.1%	0.4%	0.0%	0.0%	0.8%	0.6%
B. Population by Major Age Groups by Race and Ethnicity										
2000										
0-19	1,477	1,453	4	19	3	8	0	0	8	1
20-64	3,005	2,968	3	25	5	11	1	2	6	9
65+	658	655	1	2	0	1	0	0	1	0
85+	55	55	0	0	0	0	0	0	0	0
2010										
0-19	1,167	1,124	1	29	2	8	0	0	19	13
20-64	2,911	2,861	3	32	1	13	2	0	16	15
65+	680	674	1	5	0	0	0	0	5	0
85+	74	74	0	0	0	0	0	0	0	0
C. Age Mix for Each Racial and Ethnic Group										
2000										
0-19	28.7%	28.6%	50.0%	41.3%	37.5%	40.0%	0.0%	0.0%	53.3%	10.0%
20-64	58.5%	58.5%	37.5%	54.3%	62.5%	55.0%	100.0%	100.0%	40.0%	90.0%
65+	12.8%	12.9%	12.5%	4.3%	0.0%	5.0%	0.0%	0.0%	6.7%	0.0%
85+	1.1%	1.1%	0.0%	0.0%	0.0%	0.0%	0.0%	0.0%	0.0%	0.0%
2010										
0-19	24.5%	24.1%	20.0%	43.9%	66.7%	38.1%	0.0%	0.0%	47.5%	46.4%
20-64	61.2%	61.4%	60.0%	48.5%	33.3%	61.9%	100.0%	0.0%	40.0%	53.6%
65+	14.3%	14.5%	20.0%	7.6%	0.0%	0.0%	0.0%	0.0%	12.5%	0.0%
85+	1.6%	1.6%	0.0%	0.0%	0.0%	0.0%	0.0%	0.0%	0.0%	0.0%
D. Racial and Ethnic Composition of Each Age Group										
2000										
0-19	100.0%	98.4%	0.3%	1.3%	0.2%	0.5%	0.0%	0.0%	0.5%	0.1%
20-64	100.0%	98.8%	0.1%	0.8%	0.2%	0.4%	0.0%	0.1%	0.2%	0.3%
65+	100.0%	99.5%	0.2%	0.3%	0.0%	0.2%	0.0%	0.0%	0.2%	0.0%
85+	100.0%	100.0%	0.0%	0.0%	0.0%	0.0%	0.0%	0.0%	0.0%	0.0%
2010										
0-19	100.0%	96.3%	0.1%	2.5%	0.2%	0.7%	0.0%	0.0%	1.6%	1.1%
20-64	100.0%	98.3%	0.1%	1.1%	0.0%	0.4%	0.1%	0.0%	0.5%	0.5%
65+	100.0%	99.1%	0.1%	0.7%	0.0%	0.0%	0.0%	0.0%	0.7%	0.0%
85+	100.0%	100.0%	0.0%	0.0%	0.0%	0.0%	0.0%	0.0%	0.0%	0.0%
E. Population Growth										
2000-2010, Change										
0-19	-310	-329	-3	10	-1	0	0	0	11	12
20-64	-94	-107	0	7	-4	2	1	-2	10	6
65+	22	19	0	3	0	-1	0	0	4	0
85+	19	19	0	0	0	0	0	0	0	0
Total	-382	-417	-3	20	-5	1	1	-2	25	18
2000-2010, Pct Change										
0-19	-21.0%	-22.6%	-75.0%	52.6%	-33.3%	0.0%	0.0%	0.0%	137.5%	1200.0%
20-64	-3.1%	-3.6%	0.0%	28.0%	-80.0%	18.2%	100.0%	-100.0%	166.7%	66.7%
65+	3.3%	2.9%	0.0%	150.0%	0.0%	-100.0%	0.0%	0.0%	400.0%	0.0%
85+	34.5%	34.5%	0.0%	0.0%	0.0%	0.0%	0.0%	0.0%	0.0%	0.0%
Total	-7.4%	-8.2%	-37.5%	43.5%	-62.5%	5.0%	100.0%	-100.0%	166.7%	180.0%

Source: Decennial Census 2010, 2000, American Community Survey 2008-2012

Prepared for the Pennsylvania State Library by The Pennsylvania State Data Center, 9/2014

# Reference Data

## Evans City Public Library

					Detail for Other, Non-Hispanic					Hispanic or Latino
	Total Population	White, Non-Hispanic	Black, Non-Hispanic	Other, Non-Hispanic	AIAN	Asian	NHOPI	Some Other Race	Two or More Races	
F. Population by Library-Defined Age Groups, 2010										
0-5	313	305	0	5	0	0	0	0	5	3
6-10	270	258	0	11	2	3	0	0	6	1
11-13	192	180	1	8	0	3	0	0	5	3
14-18	343	332	0	5	0	2	0	0	3	6
19-32	710	703	0	6	1	0	0	0	5	1
33-45	820	794	2	13	0	5	2	0	6	11
46-64	1,430	1,413	1	13	0	8	0	0	5	3
65-84	606	600	1	5	0	0	0	0	5	0
85+	74	74	0	0	0	0	0	0	0	0
Total	4,758	4,659	5	66	3	21	2	0	40	28
G. Population by 5-Year Age Cohorts, 2010										
0-4	272	264	0	5	0	0	0	0	5	3
5-9	254	244	0	9	1	2	0	0	6	1
10-14	316	298	1	13	1	5	0	0	7	4
15-19	325	318	0	2	0	1	0	0	1	5
20-24	246	246	0	0	0	0	0	0	0	0
25-29	269	264	0	4	0	0	0	0	4	1
30-34	245	239	0	6	1	2	0	0	3	0
35-39	280	268	1	6	0	2	2	0	2	5
40-44	368	358	1	3	0	1	0	0	2	6
45-49	444	434	1	8	0	5	0	0	3	1
50-54	444	440	0	4	0	2	0	0	2	0
55-59	375	372	0	1	0	1	0	0	0	2
60-64	240	240	0	0	0	0	0	0	0	0
65-69	187	186	0	1	0	0	0	0	1	0
70-74	175	171	1	3	0	0	0	0	3	0
75-79	129	129	0	0	0	0	0	0	0	0
80-84	115	114	0	1	0	0	0	0	1	0
85-89	58	58	0	0	0	0	0	0	0	0
90-94	15	15	0	0	0	0	0	0	0	0
95-99	1	1	0	0	0	0	0	0	0	0
100+	0	0	0	0	0	0	0	0	0	0
Total	4,758	4,659	5	66	3	21	2	0	40	28

Source: Decennial Census 2010, 2000, American Community Survey 2008-2012

Prepared for the Pennsylvania State Library by The Pennsylvania State Data Center, 9/2014

# Reference Data

## Evans City Public Library

### H. Income Distribution, 2008-2012

Range (in thousands)	Households	Pct of Total
<\$10K	51	2.5%
\$10K to <\$25K	323	16.0%
\$25K to <\$50K	448	22.2%
\$50K to <\$75K	493	24.5%
\$75K to <\$100K	279	13.9%
\$100K to <\$150K	316	15.7%
\$150K+	104	5.2%

### I. Household Type, 2010

Household Type	2000	2000pct	2010	2010pct
Total Households	1,946	100.0%	1,899	100.0%
Family Households	1,423	73.1%	1,335	70.3%
Husband-wife, no children w/children	554	28.5%	407	21.4%
Female head, no husband, w/ children	94	4.8%	94	4.9%
Male head, no wife, w/ children	29	1.5%	27	1.4%
Without children	746	38.3%	807	42.5%
Nonfamily households	523	26.9%	564	29.7%
Living alone	433	22.3%	459	24.2%
Other nonfamily	90	4.6%	105	5.5%

### J. Household Type by Race and Ethnicity, 2008-2012

Household Type	White, NH	Black, NH	Other, NH	Hispanic
Total Households	1,873	4	17	8
Husband wife family	57.4%	50.0%	64.7%	62.5%
Family with male head, no wife	3.6%	0.0%	5.9%	0.0%
family with female head, no husband	9.3%	0.0%	0.0%	0.0%
Living alone	24.0%	50.0%	29.4%	37.5%
Other nonfamily	5.6%	0.0%	0.0%	0.0%

### K. Poverty, 2008-2012

Families	Poverty	PA
All families	3.1%	9.1%
Families w/ related children	4.8%	15.3%
Female householder, no husband present	9.4%	28.8%
Female householder, no husband present, w/ related children	10.8%	39.2%
All people	5.8%	13.1%
Under 18 years	6.7%	18.4%
18 to 64 years	5.5%	12.3%
65 years and over	5.5%	8.4%

### L. Educational Attainment by Race and Ethnicity, 2008-2012

Education Level	White, NH	Black	Other	Hispanic	Total
Population 25 years and over	3,406	9	29	13	3,457
Less than high school	9.0%	0.0%	10%	0.0%	8.9%
High school graduate (includes equivalency	37.6%	0.0%	31%	15.4%	37.3%
Some college or associates degree	32.4%	0.0%	21%	53.8%	32.3%
Bachelors degree or higher	21.1%	100.0%	38%	30.8%	21.5%

### M. Occupation, 2008-2012

Occupation	Estimate	Percent
Civilian population age 16 years and over	2,657	100.0%
Management, professional, and related occupations	819	30.8%
Service occupations	509	19.2%
Sales and office occupations	656	24.7%
Farming, fishing, and forestry occupations	21	0.8%
Construction, extraction, maintenance, and repair occupations	265	10.0%
Production, transportation, and material moving occupations	387	14.6%

### N. Class of Worker, 2008-2012

Occupation	Estimate	Percent
Civilian population age 16 years and over	2,657	100.0%
Private, for profit, wage and salary employee	1,832	68.9%
Private, not for profit, wage and salary employee	321	12.1%
Private, for profit, wage and salary self-employed in own business	71	2.7%
Government workers	248	9.3%
Self-employed in own not incorporated business	179	6.7%
Unpaid family workers in family business	6	0.2%