

Demographic Profile

F. D. Campbell Memorial Library

Population Growth: The total population of the F. D. Campbell Memorial Library service area decreased by - 3.6 percent over the past decade to 8,334; this decline rate was lower than the statewide rate of 3.4 percent.

Age and Sex: In 2010, the F. D. Campbell Memorial Library service area had a total population of 8,334 - 4,098 males (49.2 percent) and 4,236 females (50.8 percent). The age structure of the population in 2010 was as follows: 23.0 percent of the population was under 20 years old, 59.3 percent was 20 to 64 years old and 17.7 percent was 65 years or older.

Race and Ethnicity: For people reporting one race alone, not of Hispanic ethnicity, 98.4 percent were White; .1 percent were Black or African American; 1.0 percent were Other Race Alone.¹ A total of 41 or .5 percent of the population were Hispanic.²

Households: In 2010, there were 3,342 households in the F. D. Campbell Memorial Library service area. The average household size was 2.48 people. Families made up 74.0 percent of the households. This figure includes both families with (26.8 percent) and without (47.2 percent) children. Of families with children less than 18 years old, 19.2 percent were married-couple families, 5.6 percent were female householder families with no husband present, and the remaining (2.1 percent) were male-headed households with no wife present.

Education: The educational attainment of the population 25 years and over was lower in the F. D. Campbell Memorial Library service area than in Pennsylvania. During the period 2008-2012, 18.8 percent of residents had earned a Bachelor's degree or higher, compared with 27.0 percent statewide. A total of 615 or 10.3 percent had not completed high school, compared with 11.7 percent for the commonwealth as a whole.

Income and Poverty: Households with incomes of \$25,000 to \$49,999 (24.4 percent) made up the largest percent of households in the F. D. Campbell Memorial Library service area in 2008-2012. For comparison, 24.4 percent of commonwealth households were in this range during the period.

In 2008-2012, the overall poverty rate for the F. D. Campbell Memorial Library service area was lower than Pennsylvania (12.4 percent compared to 13.1 percent). The poverty rate for the population under 18 years of age was 18.2 percent, compared with 11.4 percent of people 18 to 64 years and 8.2 percent for those aged 65 years and over. A total of 236 or 9.9 percent of all families had incomes below poverty level. In 2008-2012, 16.6 percent of families with related children and 43.6 percent of families with a female householder and no husband with related children present had incomes below the poverty level.

Class of Worker and Occupation: In 2008-2012, 80.7 percent of the workforce was private wage and salary workers; 11.8 percent were federal, state, or local government workers; and 7.5 percent were self-employed in their own (not incorporated) business.

The top occupation group for the civilian employed population 16 years and over in the F. D. Campbell Memorial Library service area in 2008-2012 was Management, business, science, and arts (28.8 percent).

¹ Other race includes those who identified themselves as American Indian/Alaska Native, Asian, Native Hawaiian/Other Pacific Islander, Some Other Race and Two or More Races on the 2010 Census form.

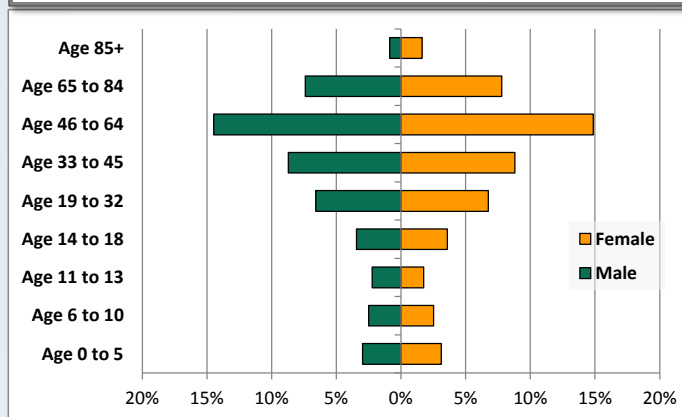
² People of Hispanic origin may be of any race.

Demographic Profile

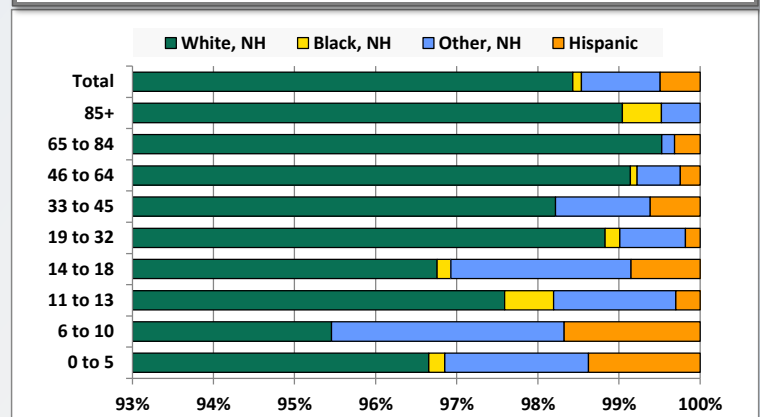
F. D. Campbell Memorial Library

Key Indicators		
	2000	2010
Population Growth		
Total Population	8,641	8,334
10-Year Growth	N/A	-3.6%
Diversity		
White Alone, Non-Hispanic	98.3%	98.4%
Black Alone, Non-Hispanic	0.2%	0.1%
Other Race Alone, Non-Hispanic	1.0%	1.0%
Percent Hispanic	0.5%	0.5%
Aging		
Percent 65 Years and Over	16.3%	17.7%
Households		
Percent Married Couple with Own Children	24.4%	19.2%
Percent Living Alone	22.6%	22.4%

Population by Library-Defined Age Group, 2010



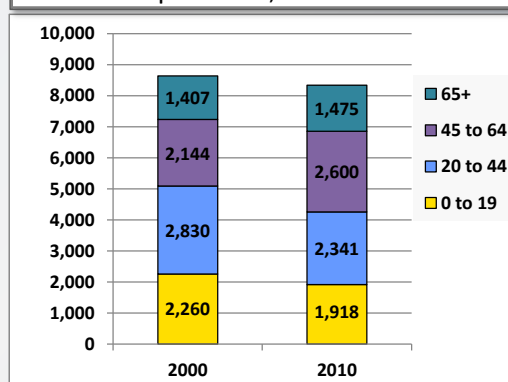
Race/Ethnicity by Library-Defined Age Group, 2010



Population Growth by Library-Defined Age Group, 2000 to 2010

Age Group	2010	Change	
		Numeric	Percent
Total	8,334	-307	-3.6%
85+	209	77	58.3%
65 to 84	1,266	-9	-0.7%
46 to 64	2,446	456	22.9%
33 to 45	1,459	-350	-19.3%
19 to 32	1,110	-150	-11.9%
14 to 18	586	16	2.8%
11 to 13	332	-67	-16.8%
6 to 10	418	-237	-36.2%
0 to 5	508	-43	-7.8%

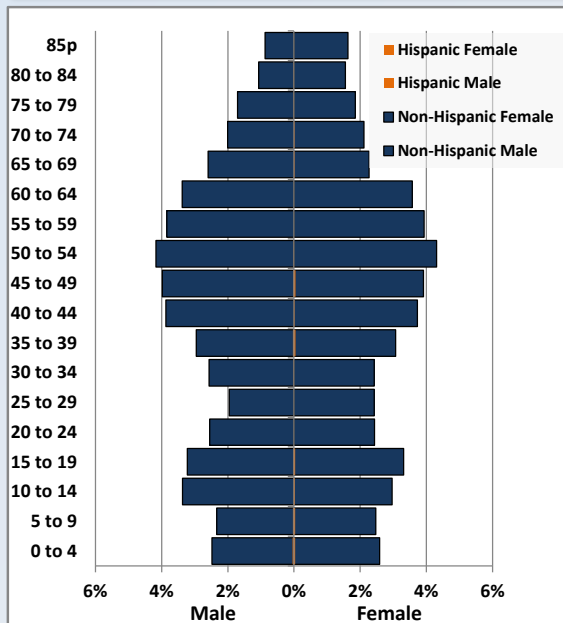
Population Total, 2000 and 2010



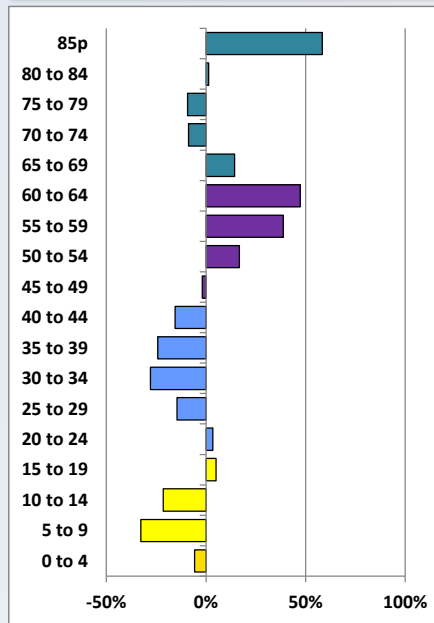
Demographic Profile

F. D. Campbell Memorial Library

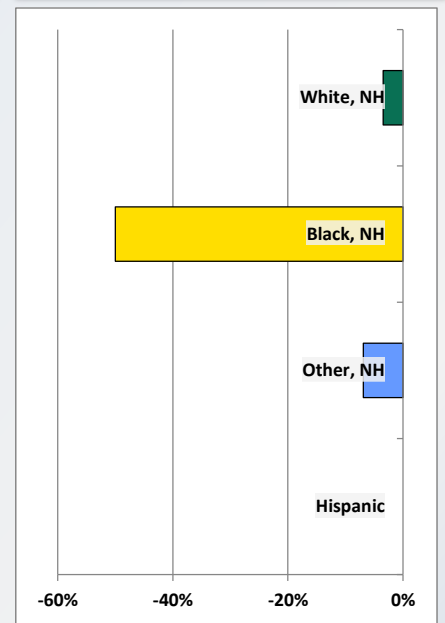
Population by 5-Year Age Cohorts



Pop Change by Age, 2000 to 2010

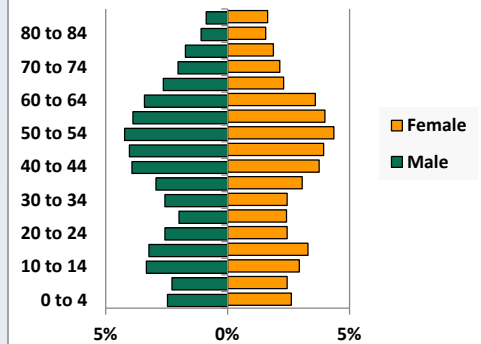


Pop Change by Race/Ethnicity, 2000 to 2010

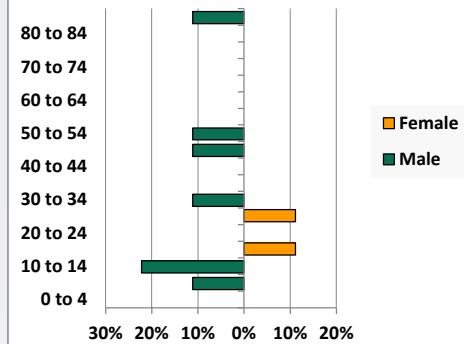


Population by Age, Race and Ethnicity 2010

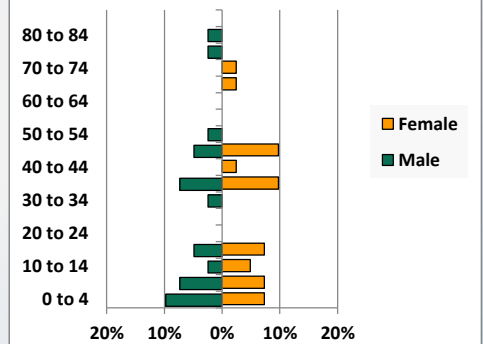
White, Not Hispanic



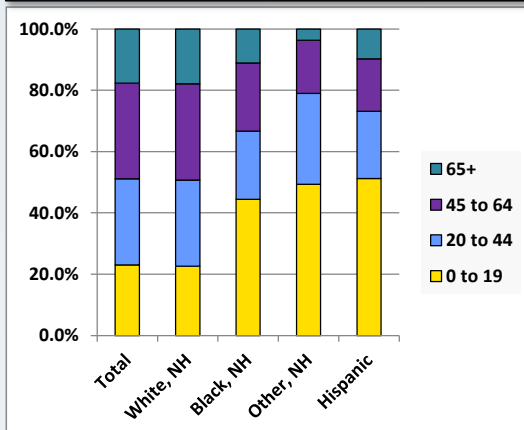
Black, Non-Hispanic



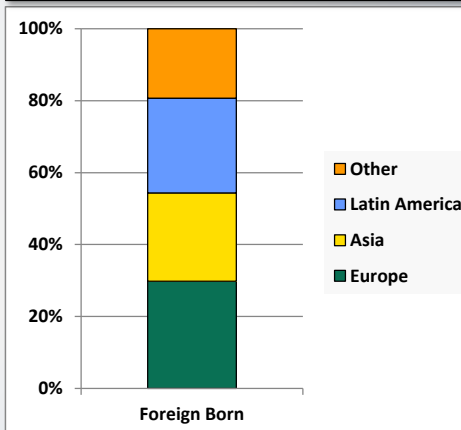
Hispanic



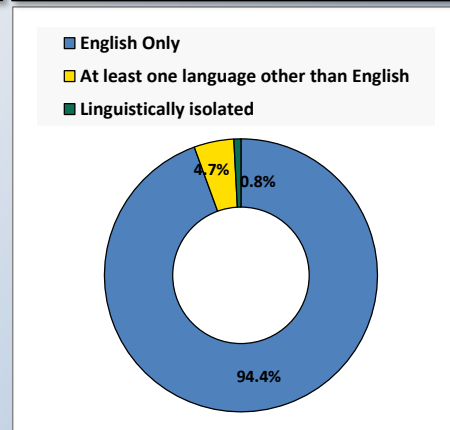
Age by Race and Ethnicity, 2010



Foreign Born, 2010



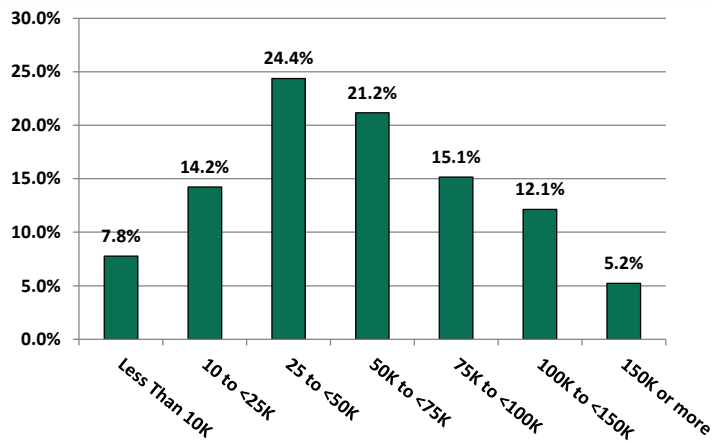
Household Language, 2010



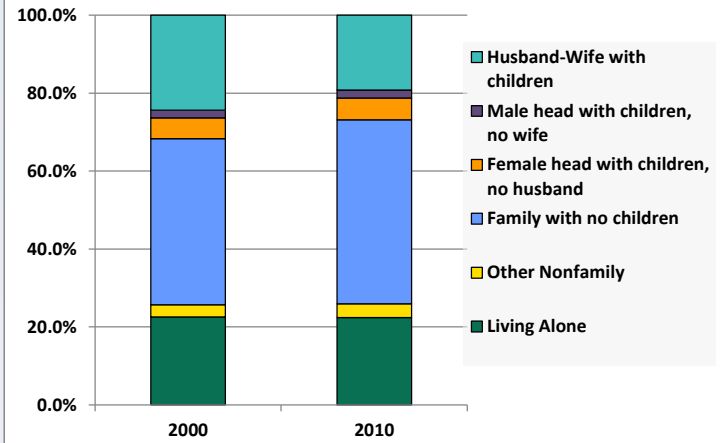
Demographic Profile

F. D. Campbell Memorial Library

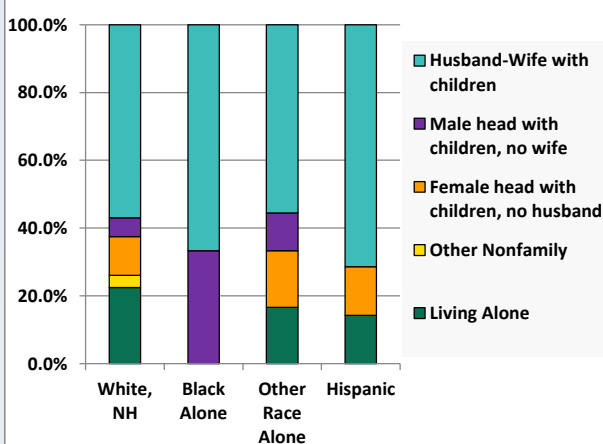
Household Income Distribution, 2008-2012



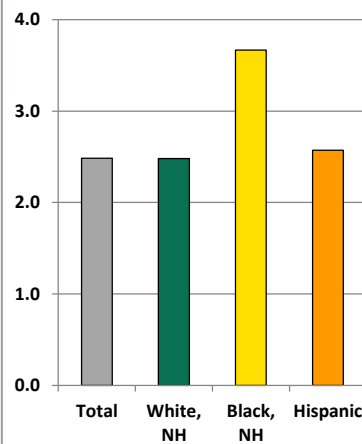
Household Type, 2000 and 2010



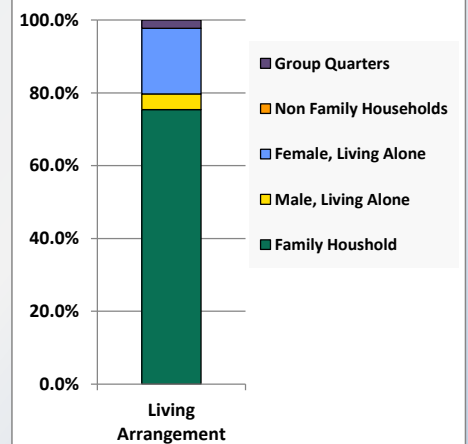
Household Type by Race/Ethnicity, 2010



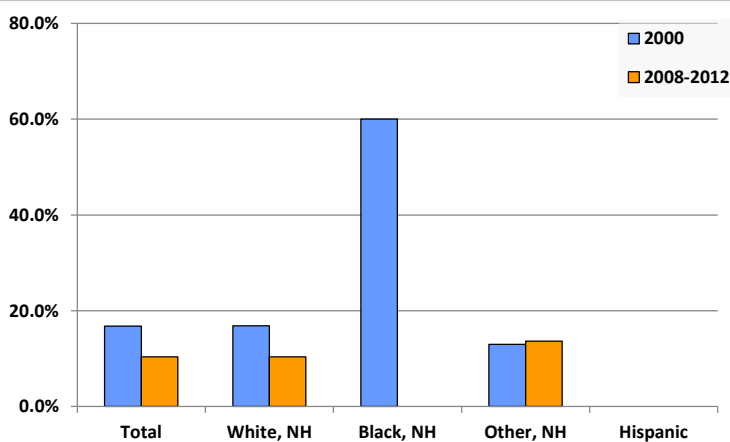
Average Household Size, 2010



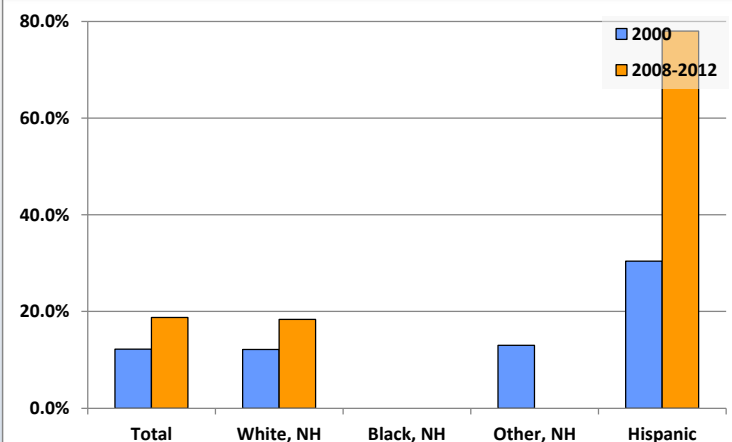
Living Arrangements 65+, 2008-2012



Percent of Adults that Did Not Complete High School



Percent of Adults Who Attained a Bachelor's Degree or Higher



Reference Data

F. D. Campbell Memorial Library

					Detail for Other, Non-Hispanic					
	Total Population	White, Non- Hispanic	Black, Non- Hispanic	Other, Non- Hispanic	AIAN	Asian	NHOPI	Some Other	Two or More	Hispanic or
								Race	Races	Latino
A. Total Population										
2000 Total	8,641	8,495	18	87	5	26	0	4	52	41
2000 pct of Total	100.0%	98.3%	0.2%	1.0%	0.1%	0.3%	0.0%	0.0%	0.6%	0.5%
2010 Total	8,334	8,203	9	81	6	25	0	0	50	41
2010 pct of Total	100.0%	98.4%	0.1%	1.0%	0.1%	0.3%	0.0%	0.0%	0.6%	0.5%
B. Population by Major Age Groups by Race and Ethnicity										
2000										
0-19	2,260	2,193	9	40	2	9	0	2	27	18
20-64	4,974	4,902	8	43	2	16	0	2	23	21
65+	1,407	1,400	1	4	1	1	0	0	2	2
85+	132	132	0	0	0	0	0	0	0	0
2010										
0-19	1,918	1,853	4	40	0	10	0	0	30	21
20-64	4,941	4,883	4	38	4	15	0	0	19	16
65+	1,475	1,467	1	3	2	0	0	0	1	4
85+	209	207	1	1	0	0	0	0	1	0
C. Age Mix for Each Racial and Ethnic Group										
2000										
0-19	26.2%	25.8%	50.0%	46.0%	40.0%	34.6%	0.0%	50.0%	51.9%	43.9%
20-64	57.6%	57.7%	44.4%	49.4%	40.0%	61.5%	0.0%	50.0%	44.2%	51.2%
65+	16.3%	16.5%	5.6%	4.6%	20.0%	3.8%	0.0%	0.0%	3.8%	4.9%
85+	1.5%	1.6%	0.0%	0.0%	0.0%	0.0%	0.0%	0.0%	0.0%	0.0%
2010										
0-19	23.0%	22.6%	44.4%	49.4%	0.0%	40.0%	0.0%	0.0%	60.0%	51.2%
20-64	59.3%	59.5%	44.4%	46.9%	66.7%	60.0%	0.0%	0.0%	38.0%	39.0%
65+	17.7%	17.9%	11.1%	3.7%	33.3%	0.0%	0.0%	0.0%	2.0%	9.8%
85+	2.5%	2.5%	11.1%	1.2%	0.0%	0.0%	0.0%	0.0%	2.0%	0.0%
D. Racial and Ethnic Composition of Each Age Group										
2000										
0-19	100.0%	97.0%	0.4%	1.8%	0.1%	0.4%	0.0%	0.1%	1.2%	0.8%
20-64	100.0%	98.6%	0.2%	0.9%	0.0%	0.3%	0.0%	0.0%	0.5%	0.4%
65+	100.0%	99.5%	0.1%	0.3%	0.1%	0.1%	0.0%	0.0%	0.1%	0.1%
85+	100.0%	100.0%	0.0%	0.0%	0.0%	0.0%	0.0%	0.0%	0.0%	0.0%
2010										
0-19	100.0%	96.6%	0.2%	2.1%	0.0%	0.5%	0.0%	0.0%	1.6%	1.1%
20-64	100.0%	98.8%	0.1%	0.8%	0.1%	0.3%	0.0%	0.0%	0.4%	0.3%
65+	100.0%	99.5%	0.1%	0.2%	0.1%	0.0%	0.0%	0.0%	0.1%	0.3%
85+	100.0%	99.0%	0.5%	0.5%	0.0%	0.0%	0.0%	0.0%	0.5%	0.0%
E. Population Growth										
2000-2010, Change										
0-19	-342	-340	-5	0	-2	1	0	-2	3	3
20-64	-33	-19	-4	-5	2	-1	0	-2	-4	-5
65+	68	67	0	-1	1	-1	0	0	-1	2
85+	77	75	1	1	0	0	0	0	1	0
Total	-307	-292	-9	-6	1	-1	0	-4	-2	0
2000-2010, Pct Change										
0-19	-15.1%	-15.5%	-55.6%	0.0%	-100.0%	11.1%	0.0%	-100.0%	11.1%	16.7%
20-64	-0.7%	-0.4%	-50.0%	-11.6%	100.0%	-6.3%	0.0%	-100.0%	-17.4%	-23.8%
65+	4.8%	4.8%	0.0%	-25.0%	100.0%	-100.0%	0.0%	0.0%	-50.0%	100.0%
85+	58.3%	56.8%	0.0%	0.0%	0.0%	0.0%	0.0%	0.0%	0.0%	0.0%
Total	-3.6%	-3.4%	-50.0%	-6.9%	20.0%	-3.8%	0.0%	-100.0%	-3.8%	0.0%

Source: Decennial Census 2010, 2000, American Community Survey 2008-2012

Prepared for the Pennsylvania State Library by The Pennsylvania State Data Center, 9/2014

Reference Data

F. D. Campbell Memorial Library

	Total Population	White, Non- Hispanic	Black, Non- Hispanic	Other, Non- Hispanic	Detail for Other, Non-Hispanic					Hispanic or Latino
					AIAN	Asian	NHOPI	Some Other	Two or More	
								Race	Races	
F. Population by Library-Defined Age Groups, 2010										
0-5	508	491	1	9	0	0	0	0	9	7
6-10	418	399	0	12	0	4	0	0	8	7
11-13	332	324	2	5	0	1	0	0	4	1
14-18	586	567	1	13	0	5	0	0	8	5
19-32	1,110	1,097	2	9	1	4	0	0	4	2
33-45	1,459	1,433	0	17	1	6	0	0	10	9
46-64	2,446	2,425	2	13	2	5	0	0	6	6
65-84	1,266	1,260	0	2	2	0	0	0	0	4
85+	209	207	1	1	0	0	0	0	1	0
Total	8,334	8,203	9	81	6	25	0	0	50	41
G. Population by 5-Year Age Cohorts, 2010										
0-4	430	417	0	6	0	0	0	0	6	7
5-9	407	387	1	13	0	3	0	0	10	6
10-14	531	514	2	12	0	4	0	0	8	3
15-19	550	535	1	9	0	3	0	0	6	5
20-24	415	412	0	3	0	1	0	0	2	0
25-29	365	361	1	3	1	2	0	0	0	0
30-34	417	411	1	4	0	2	0	0	2	1
35-39	509	492	0	10	0	3	0	0	7	7
40-44	635	630	0	4	1	2	0	0	1	1
45-49	664	653	1	4	1	1	0	0	2	6
50-54	708	704	1	2	0	1	0	0	1	1
55-59	648	645	0	3	1	1	0	0	1	0
60-64	580	575	0	5	0	2	0	0	3	0
65-69	406	405	0	0	0	0	0	0	0	1
70-74	344	342	0	1	1	0	0	0	0	1
75-79	297	296	0	0	0	0	0	0	0	1
80-84	219	217	0	1	1	0	0	0	0	1
85-89	132	130	1	1	0	0	0	0	1	0
90-94	66	66	0	0	0	0	0	0	0	0
95-99	10	10	0	0	0	0	0	0	0	0
100+	1	1	0	0	0	0	0	0	0	0
Total	8,334	8,203	9	81	6	25	0	0	50	41

Source: Decennial Census 2010, 2000, American Community Survey 2008-2012
 Prepared for the Pennsylvania State Library by The Pennsylvania State Data Center, 9/2014

Reference Data

F. D. Campbell Memorial Library

H. Income Distribution, 2008-2012

Range (in thousands)	Households	Pct of Total
<\$10K	252	7.8%
\$10K to <\$25K	461	14.2%
\$25K to <\$50K	790	24.4%
\$50K to <\$75K	686	21.2%
\$75K to <\$100K	491	15.1%
\$100K to <\$150K	393	12.1%
\$150K+	169	5.2%

I. Household Type, 2010

Household Type	2000	2000pct	2010	2010pct
Total Households	3,355	100.0%	3,342	100.0%
Family Households	2,492	74.3%	2,474	74.0%
Husband-wife, no children w/children	819	24.4%	641	19.2%
Female head, no husband, w/ children	179	5.3%	187	5.6%
Male head, no wife, w/ children	66	2.0%	69	2.1%
Without children	1,428	42.6%	1,577	47.2%
Nonfamily households	863	25.7%	868	26.0%
Living alone	758	22.6%	750	22.4%
Other nonfamily	105	3.1%	118	3.5%

J. Household Type by Race and Ethnicity, 2008-2012

Household Type	White, NH	Black, NH	Other, NH	Hispanic
Total Households	3,316	3	18	7
Husband wife family	56.9%	66.7%	55.6%	71.4%
Family with male head, no wife	5.6%	33.3%	11.1%	0.0%
family with female head, no husband	11.4%	0.0%	16.7%	14.3%
Living alone	22.5%	0.0%	16.7%	14.3%
Other nonfamily	3.6%	0.0%	0.0%	0.0%

K. Poverty, 2008-2012

Families	Poverty	PA
All families	9.9%	9.1%
Families w/ related children	16.6%	15.3%
Female householder, no husband present	33.3%	28.8%
Female householder, no husband present, w/ related children	43.6%	39.2%
All people	12.4%	13.1%
Under 18 years	18.2%	18.4%
18 to 64 years	11.4%	12.3%
65 years and over	8.2%	8.4%

L. Educational Attainment by Race and Ethnicity, 2008-2012

Education Level	White, NH	Black	Other	Hispanic	Total
Population 25 years and over	5,852	0	44	50	5,946
Less than high school	10.4%	0.0%	14%	0.0%	10.3%
High school graduate (includes equivalency	43.9%	0.0%	48%	22.0%	43.8%
Some college or associates degree	27.3%	0.0%	39%	0.0%	27.1%
Bachelors degree or higher	18.4%	0.0%	0%	78.0%	18.8%

M. Occupation, 2008-2012

Occupation	Estimate	Percent
Civilian population age 16 years and over	3,824	100.0%
Management, professional, and related occupations	1,101	28.8%
Service occupations	605	15.8%
Sales and office occupations	1,020	26.7%
Farming, fishing, and forestry occupations	1	0.0%
Construction, extraction, maintenance, and repair occupations	368	9.6%
Production, transportation, and material moving occupations	729	19.1%

N. Class of Worker, 2008-2012

Occupation	Estimate	Percent
Civilian population age 16 years and over	3,824	100.0%
Private, for profit, wage and salary employee	2,678	70.0%
Private, not for profit, wage and salary employee	330	8.6%
Private, for profit, wage and salary self-employed in own business	79	2.1%
Government workers	452	11.8%
Self-employed in own not incorporated business	285	7.5%
Unpaid family workers in family business	0	0.0%