

## Demographic Profile Foxburg Free Library Association

**Population Growth:** The total population of the Foxburg Free Library Association service area decreased by - 7.3 percent over the past decade to 5,114; this decline rate was lower than the statewide rate of 3.4 percent.

**Age and Sex:** In 2010, the Foxburg Free Library Association service area had a total population of 5,114 - 2,538 males (49.6 percent) and 2,576 females (50.4 percent). The age structure of the population in 2010 was as follows: 23.6 percent of the population was under 20 years old, 58.8 percent was 20 to 64 years old and 17.6 percent was 65 years or older.

**Race and Ethnicity:** For people reporting one race alone, not of Hispanic ethnicity, 98.0 percent were White; .3 percent were Black or African American; 1.1 percent were Other Race Alone.<sup>1</sup> A total of 30 or .6 percent of the population were Hispanic.<sup>2</sup>

**Households:** In 2010, there were 2,134 households in the Foxburg Free Library Association service area. The average household size was 2.40 people. Families made up 67.5 percent of the households. This figure includes both families with (24.6 percent) and without (42.9 percent) children. Of families with children less than 18 years old, 17.6 percent were married-couple families, 4.6 percent were female householder families with no husband present, and the remaining (2.4 percent) were male-headed households with no wife present.

**Education:** The educational attainment of the population 25 years and over was lower in the Foxburg Free Library Association service area than in Pennsylvania. During the period 2008-2012, 12.5 percent of residents had earned a Bachelor's degree or higher, compared with 27.0 percent statewide. A total of 500 or 13.3 percent had not completed high school, compared with 11.7 percent for the commonwealth as a whole.

**Income and Poverty:** Households with incomes of \$25,000 to \$49,999 (27.9 percent) made up the largest percent of households in the Foxburg Free Library Association service area in 2008-2012. For comparison, 24.4 percent of commonwealth households were in this range during the period.

In 2008-2012, the overall poverty rate for the Foxburg Free Library Association service area was lower than Pennsylvania (12.1 percent compared to 13.1 percent). The poverty rate for the population under 18 years of age was 17.6 percent, compared with 10.5 percent of people 18 to 64 years and 10.7 percent for those aged 65 years and over. A total of 129 or 8.3 percent of all families had incomes below poverty level. In 2008-2012, 13.6 percent of families with related children and 50.5 percent of families with a female householder and no husband with related children present had incomes below the poverty level.

**Class of Worker and Occupation:** In 2008-2012, 80.0 percent of the workforce was private wage and salary workers; 13.9 percent were federal, state, or local government workers; and 5.7 percent were self-employed in their own (not incorporated) business.

The top occupation group for the civilian employed population 16 years and over in the Foxburg Free Library Association service area in 2008-2012 was Management, business, science, and arts (23.1 percent).

---

<sup>1</sup> Other race includes those who identified themselves as American Indian/Alaska Native, Asian, Native Hawaiian/Other Pacific Islander, Some Other Race and Two or More Races on the 2010 Census form.

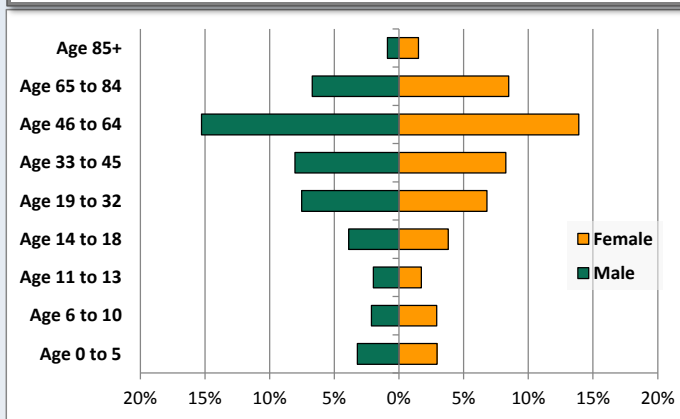
<sup>2</sup> People of Hispanic origin may be of any race.

# Demographic Profile

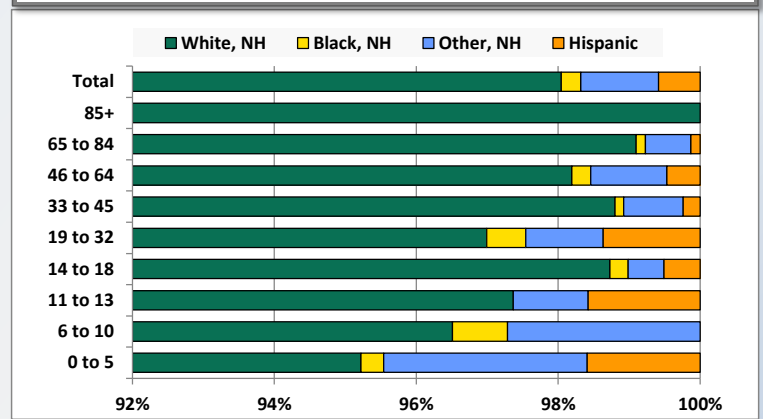
Foxburg Free Library Association

Key Indicators		
	2000	2010
<b>Population Growth</b>		
Total Population	5,516	5,114
10-Year Growth	N/A	-7.3%
<b>Diversity</b>		
White Alone, Non-Hispanic	98.5%	98.0%
Black Alone, Non-Hispanic	0.5%	0.3%
Other Race Alone, Non-Hispanic	0.7%	1.1%
Percent Hispanic	0.3%	0.6%
<b>Aging</b>		
Percent 65 Years and Over	17.4%	17.6%
<b>Households</b>		
Percent Married Couple with Own Children	24.0%	17.6%
Percent Living Alone	24.1%	27.3%

Population by Library-Defined Age Group, 2010



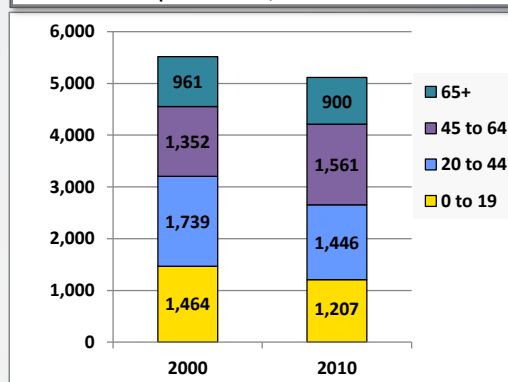
Race/Ethnicity by Library-Defined Age Group, 2010



Population Growth by Library-Defined Age Group, 2000 to 2010

Age Group	2010	Change	
		Numeric	Percent
Total	5,114	-402	-7.3%
85+	123	-4	-3.1%
65 to 84	777	-57	-6.8%
46 to 64	1,492	222	17.5%
33 to 45	834	-222	-21.0%
19 to 32	732	-99	-11.9%
14 to 18	394	-41	-9.4%
11 to 13	190	-25	-11.6%
6 to 10	258	-133	-34.0%
0 to 5	314	-43	-12.0%

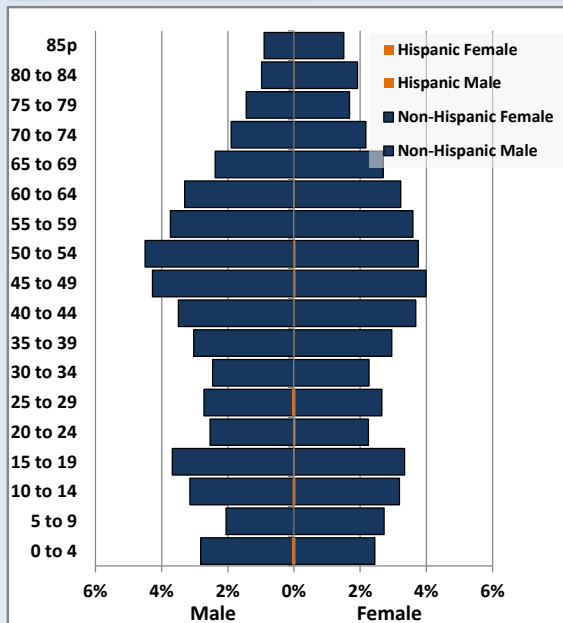
Population Total, 2000 and 2010



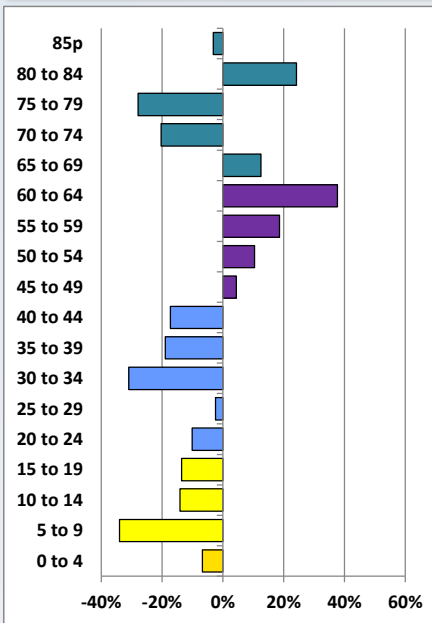
# Demographic Profile

Foxburg Free Library Association

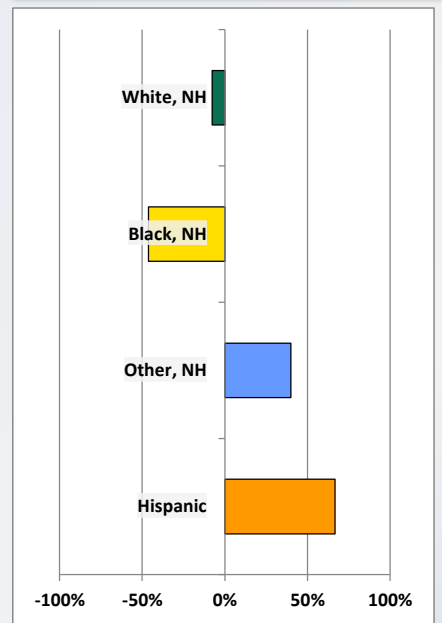
Population by 5-Year Age Cohorts



Pop Change by Age, 2000 to 2010

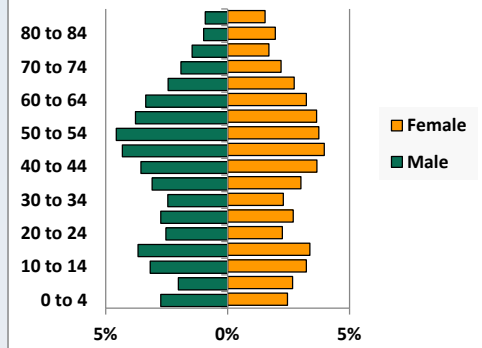


Pop Change by Race/Ethnicity, 2000 to 2010

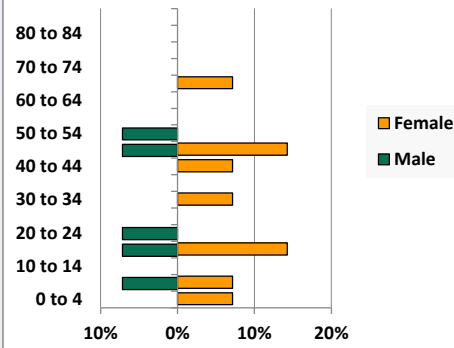


Population by Age, Race and Ethnicity 2010

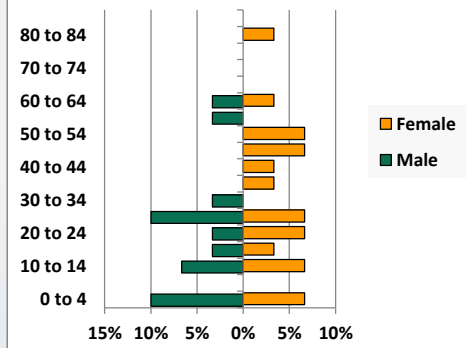
White, Not Hispanic



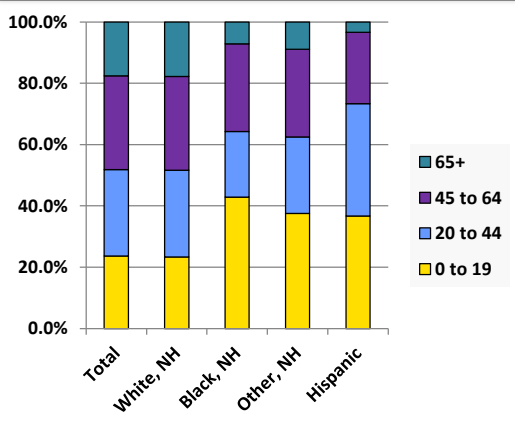
Black, Non-Hispanic



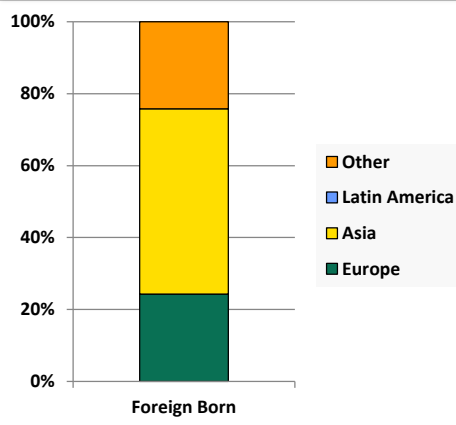
Hispanic



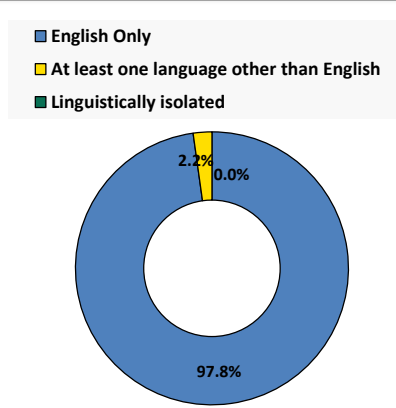
Age by Race and Ethnicity, 2010



Foreign Born, 2010



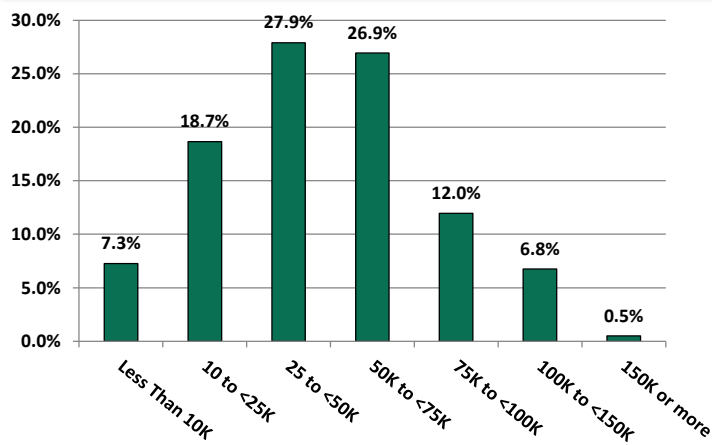
Household Language, 2010



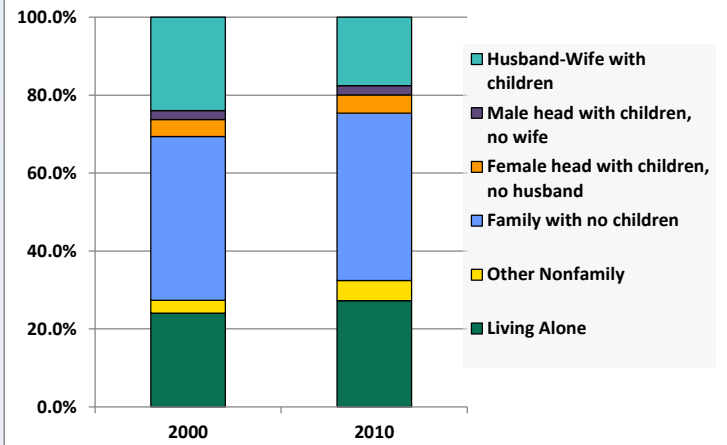
# Demographic Profile

Foxburg Free Library Association

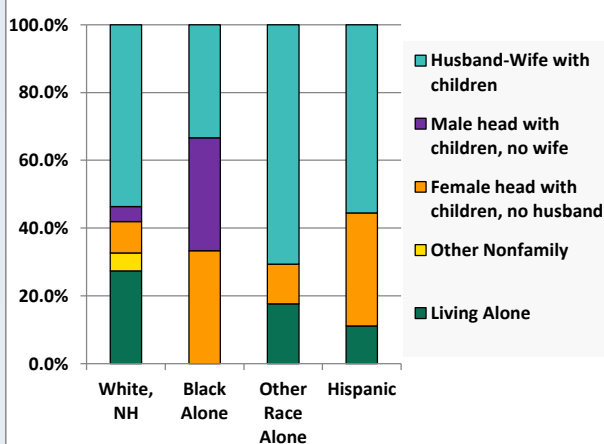
Household Income Distribution, 2008-2012



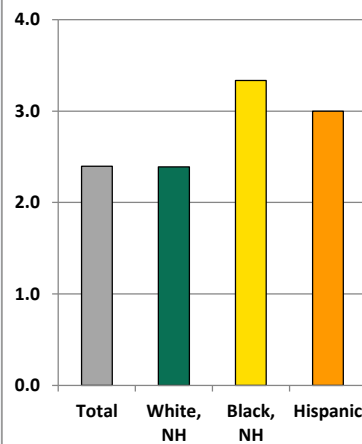
Household Type, 2000 and 2010



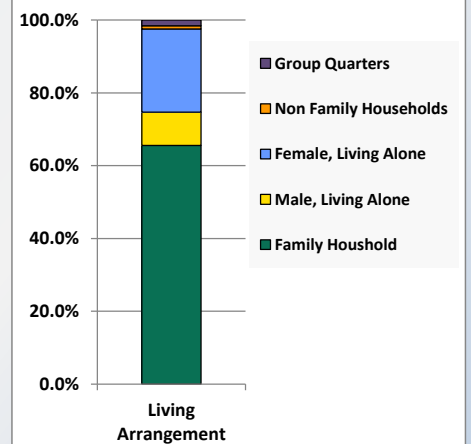
Household Type by Race/Ethnicity, 2010



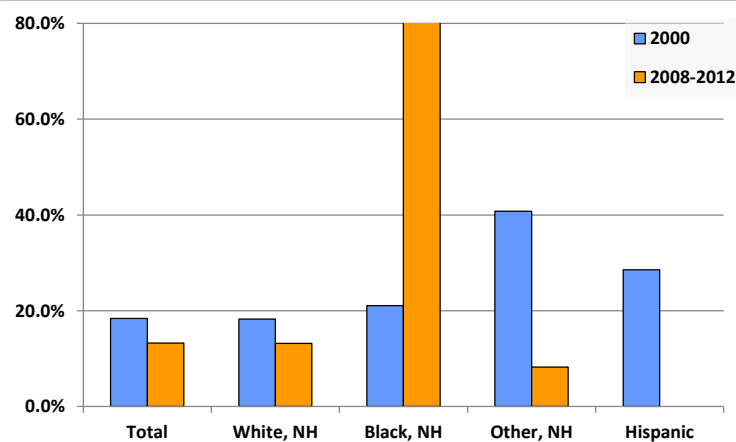
Average Household Size, 2010



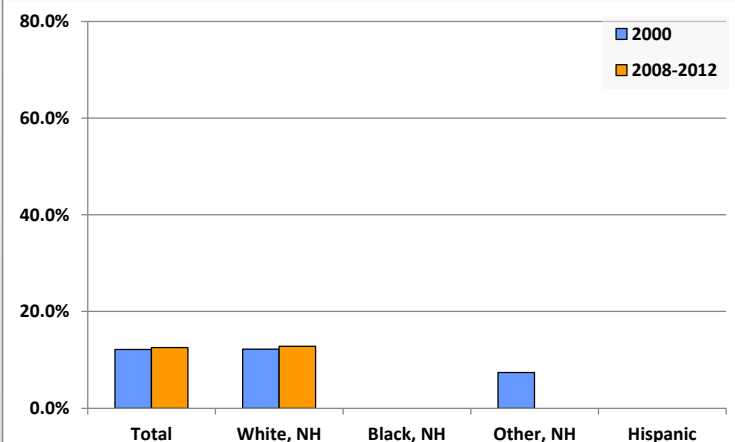
Living Arrangements 65+, 2008-2012



Percent of Adults that Did Not Complete High School



Percent of Adults Who Attained a Bachelor's Degree or Higher



# Reference Data

## Foxburg Free Library Association

	Total Population	White, Non- Hispanic	Black, Non- Hispanic	Other, Non- Hispanic	Detail for Other, Non-Hispanic					Hispanic or Latino
					AIAN	Asian	NHOPI	Some Other Race	Two or More Races	
A. Total Population										
2000 Total	5,516	5,432	26	40	6	9	0	0	25	18
2000 pct of Total	100.0%	98.5%	0.5%	0.7%	0.1%	0.2%	0.0%	0.0%	0.5%	0.3%
2010 Total	5,114	5,014	14	56	7	16	0	0	33	30
2010 pct of Total	100.0%	98.0%	0.3%	1.1%	0.1%	0.3%	0.0%	0.0%	0.6%	0.6%
B. Population by Major Age Groups by Race and Ethnicity										
2000										
0-19	1,464	1,431	11	16	2	2	0	0	12	6
20-64	3,091	3,047	11	22	3	7	0	0	12	11
65+	961	954	4	2	1	0	0	0	1	1
85+	127	126	0	0	0	0	0	0	0	1
2010										
0-19	1,207	1,169	6	21	2	2	0	0	17	11
20-64	3,007	2,952	7	30	5	12	0	0	13	18
65+	900	893	1	5	0	2	0	0	3	1
85+	123	123	0	0	0	0	0	0	0	0
C. Age Mix for Each Racial and Ethnic Group										
2000										
0-19	26.5%	26.3%	42.3%	40.0%	33.3%	22.2%	0.0%	0.0%	48.0%	33.3%
20-64	56.0%	56.1%	42.3%	55.0%	50.0%	77.8%	0.0%	0.0%	48.0%	61.1%
65+	17.4%	17.6%	15.4%	5.0%	16.7%	0.0%	0.0%	0.0%	4.0%	5.6%
85+	2.3%	2.3%	0.0%	0.0%	0.0%	0.0%	0.0%	0.0%	0.0%	5.6%
2010										
0-19	23.6%	23.3%	42.9%	37.5%	28.6%	12.5%	0.0%	0.0%	51.5%	36.7%
20-64	58.8%	58.9%	50.0%	53.6%	71.4%	75.0%	0.0%	0.0%	39.4%	60.0%
65+	17.6%	17.8%	7.1%	8.9%	0.0%	12.5%	0.0%	0.0%	9.1%	3.3%
85+	2.4%	2.5%	0.0%	0.0%	0.0%	0.0%	0.0%	0.0%	0.0%	0.0%
D. Racial and Ethnic Composition of Each Age Group										
2000										
0-19	100.0%	97.7%	0.8%	1.1%	0.1%	0.1%	0.0%	0.0%	0.8%	0.4%
20-64	100.0%	98.6%	0.4%	0.7%	0.1%	0.2%	0.0%	0.0%	0.4%	0.4%
65+	100.0%	99.3%	0.4%	0.2%	0.1%	0.0%	0.0%	0.0%	0.1%	0.1%
85+	100.0%	99.2%	0.0%	0.0%	0.0%	0.0%	0.0%	0.0%	0.0%	0.8%
2010										
0-19	100.0%	96.9%	0.5%	1.7%	0.2%	0.2%	0.0%	0.0%	1.4%	0.9%
20-64	100.0%	98.2%	0.2%	1.0%	0.2%	0.4%	0.0%	0.0%	0.4%	0.6%
65+	100.0%	99.2%	0.1%	0.6%	0.0%	0.2%	0.0%	0.0%	0.3%	0.1%
85+	100.0%	100.0%	0.0%	0.0%	0.0%	0.0%	0.0%	0.0%	0.0%	0.0%
E. Population Growth										
2000-2010, Change										
0-19	-257	-262	-5	5	0	0	0	0	5	5
20-64	-84	-95	-4	8	2	5	0	0	1	7
65+	-61	-61	-3	3	-1	2	0	0	2	0
85+	-4	-3	0	0	0	0	0	0	0	-1
Total	-402	-418	-12	16	1	7	0	0	8	12
2000-2010, Pct Change										
0-19	-17.6%	-18.3%	-45.5%	31.3%	0.0%	0.0%	0.0%	0.0%	41.7%	83.3%
20-64	-2.7%	-3.1%	-36.4%	36.4%	66.7%	71.4%	0.0%	0.0%	8.3%	63.6%
65+	-6.3%	-6.4%	-75.0%	150.0%	-100.0%	0.0%	0.0%	0.0%	200.0%	0.0%
85+	-3.1%	-2.4%	0.0%	0.0%	0.0%	0.0%	0.0%	0.0%	0.0%	-100.0%
Total	-7.3%	-7.7%	-46.2%	40.0%	16.7%	77.8%	0.0%	0.0%	32.0%	66.7%

Source: Decennial Census 2010, 2000, American Community Survey 2008-2012

Prepared for the Pennsylvania State Library by The Pennsylvania State Data Center, 9/2014

# Reference Data

## Foxburg Free Library Association

	Total Population	White, Non- Hispanic	Black, Non- Hispanic	Other, Non- Hispanic	Detail for Other, Non-Hispanic					Hispanic or Latino
					AIAN	Asian	NHOPI	Some Other	Two or More	
								Race	Races	
F. Population by Library-Defined Age Groups, 2010										
0-5	314	299	1	9	0	0	0	0	9	5
6-10	258	249	2	7	1	1	0	0	5	0
11-13	190	185	0	2	0	0	0	0	2	3
14-18	394	389	1	2	0	1	0	0	1	2
19-32	732	710	4	8	2	3	0	0	3	10
33-45	834	824	1	7	0	2	0	0	5	2
46-64	1,492	1,465	4	16	4	7	0	0	5	7
65-84	777	770	1	5	0	2	0	0	3	1
85+	123	123	0	0	0	0	0	0	0	0
Total	5,114	5,014	14	56	7	16	0	0	33	30
G. Population by 5-Year Age Cohorts, 2010										
0-4	274	260	1	8	0	0	0	0	8	5
5-9	244	235	2	7	1	1	0	0	5	0
10-14	328	321	0	3	0	0	0	0	3	4
15-19	361	353	3	3	1	1	0	0	1	2
20-24	248	240	1	4	0	2	0	0	2	3
25-29	280	272	0	3	1	1	0	0	1	5
30-34	243	238	1	3	0	1	0	0	2	1
35-39	307	306	0	0	0	0	0	0	0	1
40-44	368	362	1	4	0	1	0	0	3	1
45-49	425	415	3	5	1	2	0	0	2	2
50-54	424	417	1	4	1	2	0	0	1	2
55-59	376	372	0	3	1	1	0	0	1	1
60-64	336	330	0	4	1	2	0	0	1	2
65-69	260	259	1	0	0	0	0	0	0	0
70-74	208	206	0	2	0	2	0	0	0	0
75-79	160	158	0	2	0	0	0	0	2	0
80-84	149	147	0	1	0	0	0	0	1	1
85-89	91	91	0	0	0	0	0	0	0	0
90-94	26	26	0	0	0	0	0	0	0	0
95-99	6	6	0	0	0	0	0	0	0	0
100+	0	0	0	0	0	0	0	0	0	0
Total	5,114	5,014	14	56	7	16	0	0	33	30

Source: Decennial Census 2010, 2000, American Community Survey 2008-2012

Prepared for the Pennsylvania State Library by The Pennsylvania State Data Center, 9/2014

# Reference Data

## Foxburg Free Library Association

### H. Income Distribution, 2008-2012

Range (in thousands)	Households	Pct of Total
<\$10K	158	7.3%
\$10K to <\$25K	406	18.7%
\$25K to <\$50K	607	27.9%
\$50K to <\$75K	586	26.9%
\$75K to <\$100K	260	12.0%
\$100K to <\$150K	147	6.8%
\$150K+	11	0.5%

### I. Household Type, 2010

Household Type	2000	2000pct	2010	2010pct
Total Households	2,167	100.0%	2,134	100.0%
Family Households	1,575	72.7%	1,441	67.5%
Husband-wife, no children w/children	519	24.0%	375	17.6%
Female head, no husband, w/ children	95	4.4%	99	4.6%
Male head, no wife, w/ children	50	2.3%	51	2.4%
Without children	911	42.0%	916	42.9%
Nonfamily households	592	27.3%	693	32.5%
Living alone	522	24.1%	582	27.3%
Other nonfamily	70	3.2%	111	5.2%

### J. Household Type by Race and Ethnicity, 2008-2012

Household Type	White, NH	Black, NH	Other, NH	Hispanic
Total Households	2,109	3	17	9
Husband wife family	53.6%	33.3%	70.6%	55.6%
Family with male head, no wife	4.5%	33.3%	0.0%	0.0%
family with female head, no husband	9.2%	33.3%	11.8%	33.3%
Living alone	27.4%	0.0%	17.6%	11.1%
Other nonfamily	5.3%	0.0%	0.0%	0.0%

### K. Poverty, 2008-2012

Families	Poverty	PA
All families	8.3%	9.1%
Families w/ related children	13.6%	15.3%
Female householder, no husband present	34.7%	28.8%
Female householder, no husband present, w/ related children	50.5%	39.2%
All people	12.1%	13.1%
Under 18 years	17.6%	18.4%
18 to 64 years	10.5%	12.3%
65 years and over	10.7%	8.4%

### L. Educational Attainment by Race and Ethnicity, 2008-2012

Education Level	White, NH	Black	Other	Hispanic	Total
Population 25 years and over	3,688	11	73	0	3,772
Less than high school	13.2%	81.8%	8%	0.0%	13.3%
High school graduate (includes equivalency)	50.4%	18.2%	38%	0.0%	50.1%
Some college or associates degree	23.6%	0.0%	53%	0.0%	24.2%
Bachelors degree or higher	12.8%	0.0%	0%	0.0%	12.5%

### M. Occupation, 2008-2012

Occupation	Estimate	Percent
Civilian population age 16 years and over	2,284	100.0%
Management, professional, and related occupations	527	23.1%
Service occupations	427	18.7%
Sales and office occupations	504	22.1%
Farming, fishing, and forestry occupations	15	0.7%
Construction, extraction, maintenance, and repair occupations	354	15.5%
Production, transportation, and material moving occupations	457	20.0%

### N. Class of Worker, 2008-2012

Occupation	Estimate	Percent
Civilian population age 16 years and over	2,284	100.0%
Private, for profit, wage and salary employee	1,576	69.0%
Private, not for profit, wage and salary employee	211	9.2%
Private, for profit, wage and salary self-employed in own business	41	1.8%
Government workers	317	13.9%
Self-employed in own not incorporated business	130	5.7%
Unpaid family workers in family business	9	0.4%