

## Demographic Profile Friends Memorial Library

**Population Growth:** The total population of the Friends Memorial Library service area decreased by -8.0 percent over the past decade to 5,380; this decline rate was lower than the statewide rate of 3.4 percent.

**Age and Sex:** In 2010, the Friends Memorial Library service area had a total population of 5,380 - 2,620 males (48.7 percent) and 2,760 females (51.3 percent). The age structure of the population in 2010 was as follows: 24.9 percent of the population was under 20 years old, 55.8 percent was 20 to 64 years old and 19.2 percent was 65 years or older.

**Race and Ethnicity:** For people reporting one race alone, not of Hispanic ethnicity, 98.0 percent were White; .2 percent were Black or African American; 1.3 percent were Other Race Alone.<sup>1</sup> A total of 29 or .5 percent of the population were Hispanic.<sup>2</sup>

**Households:** In 2010, there were 2,285 households in the Friends Memorial Library service area. The average household size was 2.30 people. Families made up 64.6 percent of the households. This figure includes both families with (26.4 percent) and without (38.2 percent) children. Of families with children less than 18 years old, 16.5 percent were married-couple families, 7.0 percent were female householder families with no husband present, and the remaining (3.0 percent) were male-headed households with no wife present.

**Education:** The educational attainment of the population 25 years and over was lower in the Friends Memorial Library service area than in Pennsylvania. During the period 2008-2012, 14.4 percent of residents had earned a Bachelor's degree or higher, compared with 27.0 percent statewide. A total of 496 or 13.5 percent had not completed high school, compared with 11.7 percent for the commonwealth as a whole.

**Income and Poverty:** Households with incomes of \$25,000 to \$49,999 (31.5 percent) made up the largest percent of households in the Friends Memorial Library service area in 2008-2012. For comparison, 24.4 percent of commonwealth households were in this range during the period.

In 2008-2012, the overall poverty rate for the Friends Memorial Library service area was higher than Pennsylvania (13.4 percent compared to 13.1 percent). The poverty rate for the population under 18 years of age was 15.2 percent, compared with 13.9 percent of people 18 to 64 years and 9.3 percent for those aged 65 years and over. A total of 114 or 7.9 percent of all families had incomes below poverty level. In 2008-2012, 16.0 percent of families with related children and 48.1 percent of families with a female householder and no husband with related children present had incomes below the poverty level.

**Class of Worker and Occupation:** In 2008-2012, 81.0 percent of the workforce was private wage and salary workers; 12.5 percent were federal, state, or local government workers; and 6.3 percent were self-employed in their own (not incorporated) business.

The top occupation group for the civilian employed population 16 years and over in the Friends Memorial Library service area in 2008-2012 was Management, business, science, and arts (27.8 percent).

---

<sup>1</sup> Other race includes those who identified themselves as American Indian/Alaska Native, Asian, Native Hawaiian/Other Pacific Islander, Some Other Race and Two or More Races on the 2010 Census form.

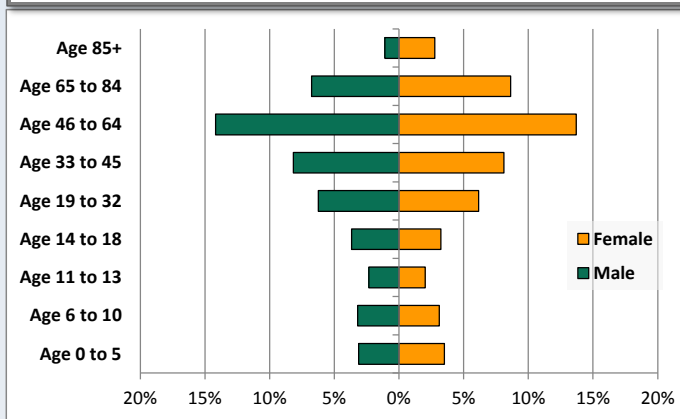
<sup>2</sup> People of Hispanic origin may be of any race.

# Demographic Profile

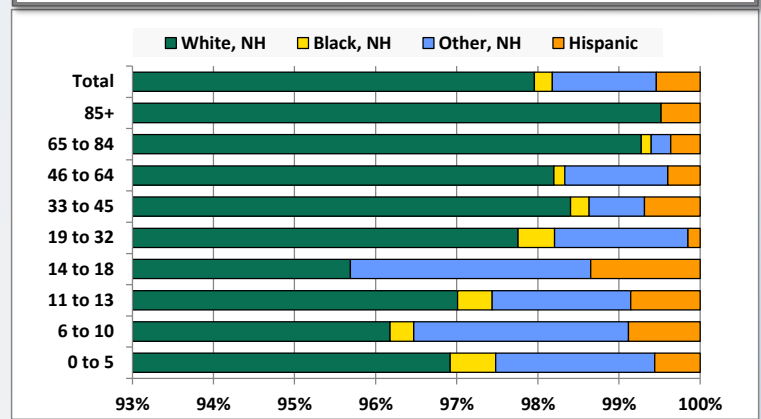
Friends Memorial Library

Key Indicators		
	2000	2010
<b>Population Growth</b>		
Total Population	5,847	5,380
10-Year Growth	N/A	-8.0%
<b>Diversity</b>		
White Alone, Non-Hispanic	98.6%	98.0%
Black Alone, Non-Hispanic	0.1%	0.2%
Other Race Alone, Non-Hispanic	0.7%	1.3%
Percent Hispanic	0.6%	0.5%
<b>Aging</b>		
Percent 65 Years and Over	19.5%	19.2%
<b>Households</b>		
Percent Married Couple with Own Children	21.1%	16.5%
Percent Living Alone	31.1%	31.0%

Population by Library-Defined Age Group, 2010



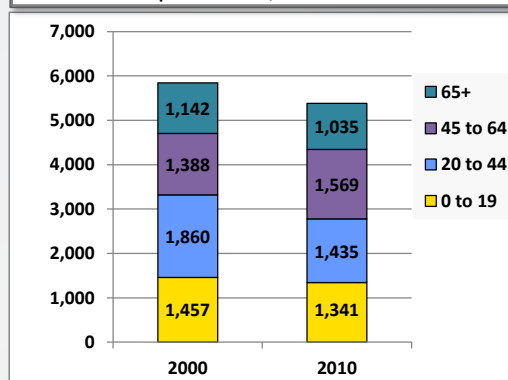
Race/Ethnicity by Library-Defined Age Group, 2010



Population Growth by Library-Defined Age Group, 2000 to 2010

Age Group	2010	Change	
		Numeric	Percent
Total	5,380	-467	-8.0%
85+	207	16	8.4%
65 to 84	828	-123	-12.9%
46 to 64	1,499	207	16.0%
33 to 45	876	-216	-19.8%
19 to 32	668	-255	-27.6%
14 to 18	371	-10	-2.6%
11 to 13	234	1	0.4%
6 to 10	340	-52	-13.3%
0 to 5	357	-35	-8.9%

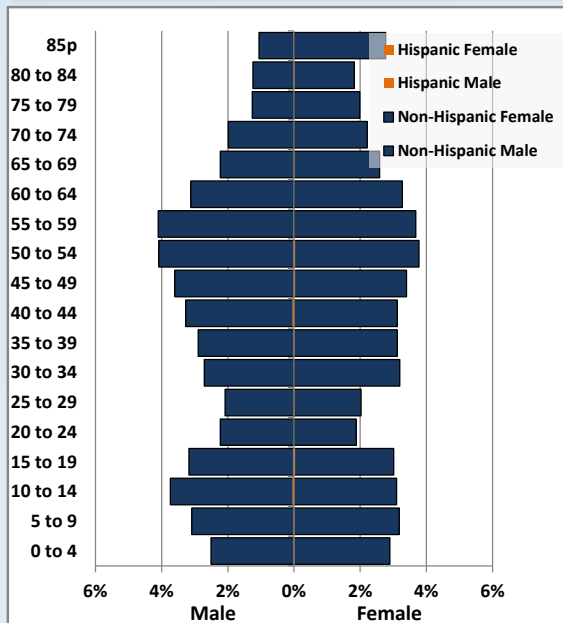
Population Total, 2000 and 2010



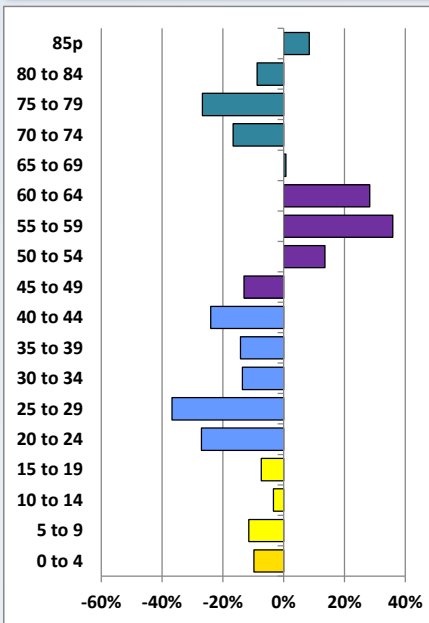
# Demographic Profile

Friends Memorial Library

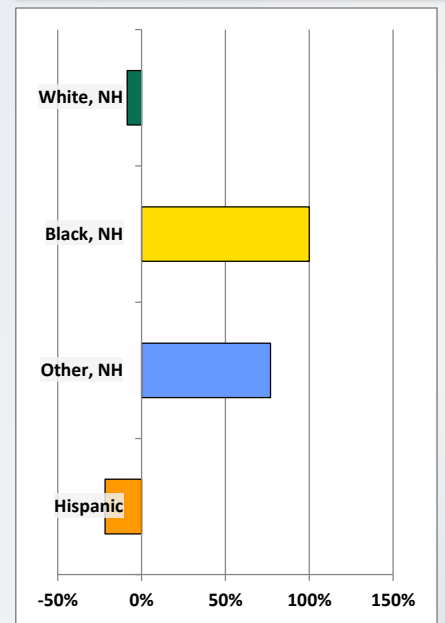
Population by 5-Year Age Cohorts



Pop Change by Age, 2000 to 2010

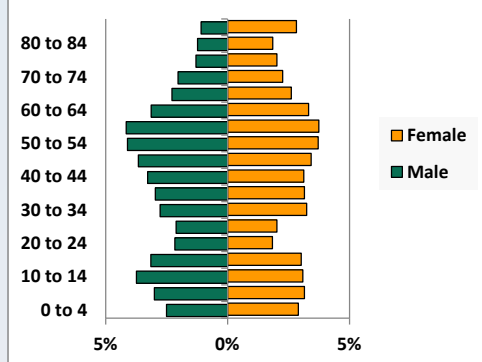


Pop Change by Race/Ethnicity, 2000 to 2010

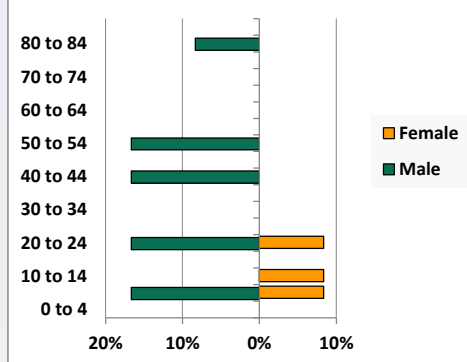


Population by Age, Race and Ethnicity 2010

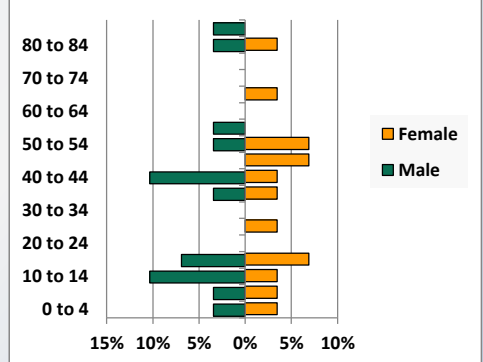
White, Not Hispanic



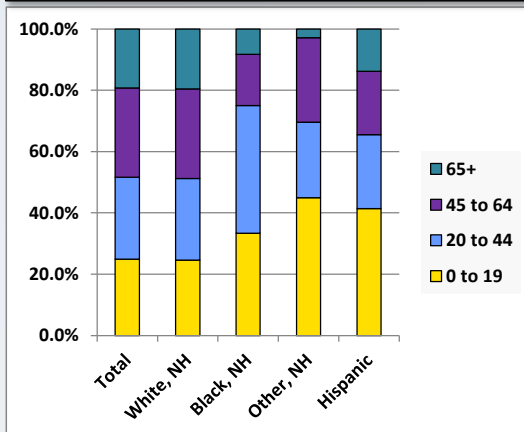
Black, Non-Hispanic



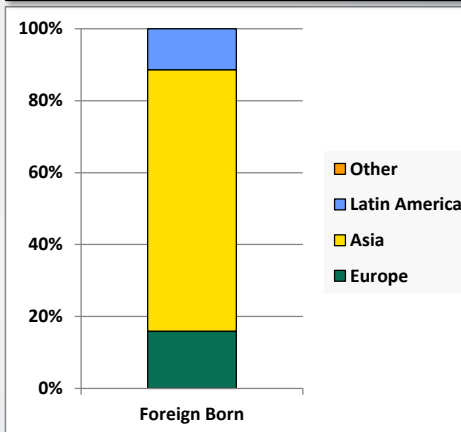
Hispanic



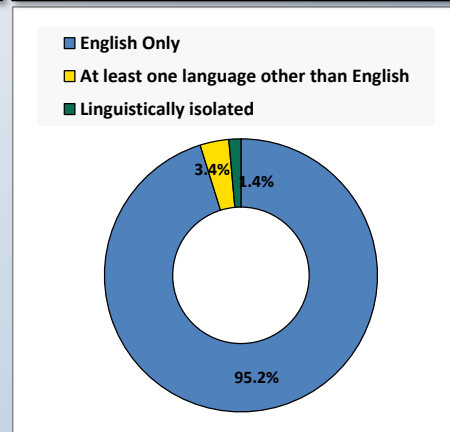
Age by Race and Ethnicity, 2010



Foreign Born, 2010



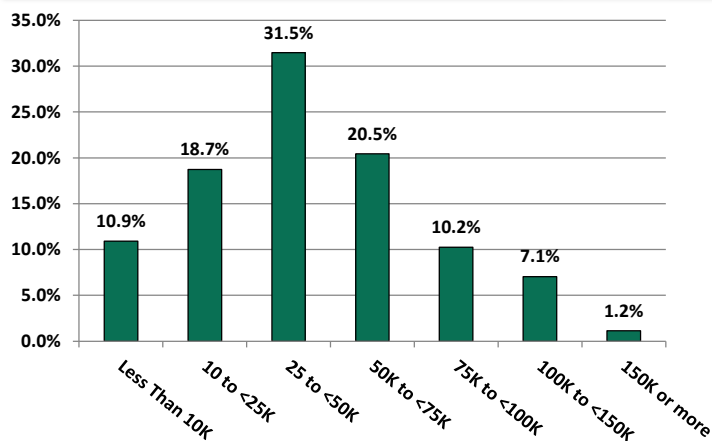
Household Language, 2010



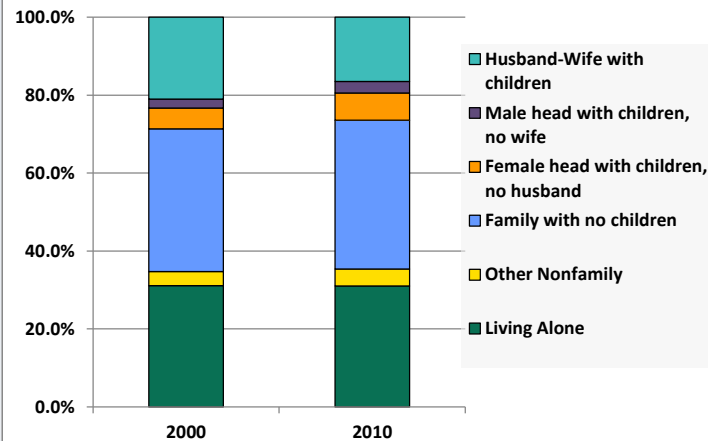
# Demographic Profile

Friends Memorial Library

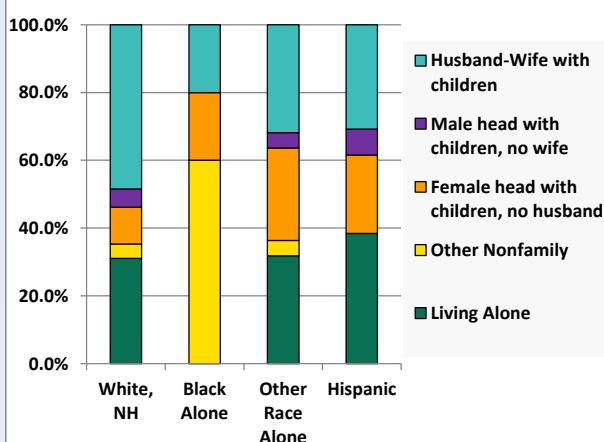
Household Income Distribution, 2008-2012



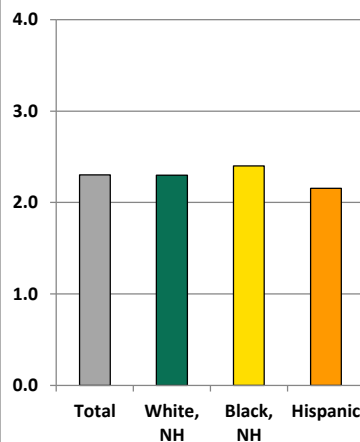
Household Type, 2000 and 2010



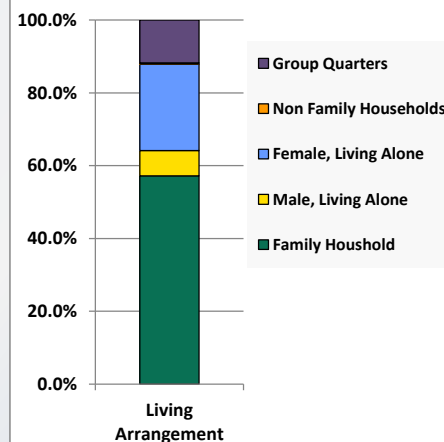
Household Type by Race/Ethnicity, 2010



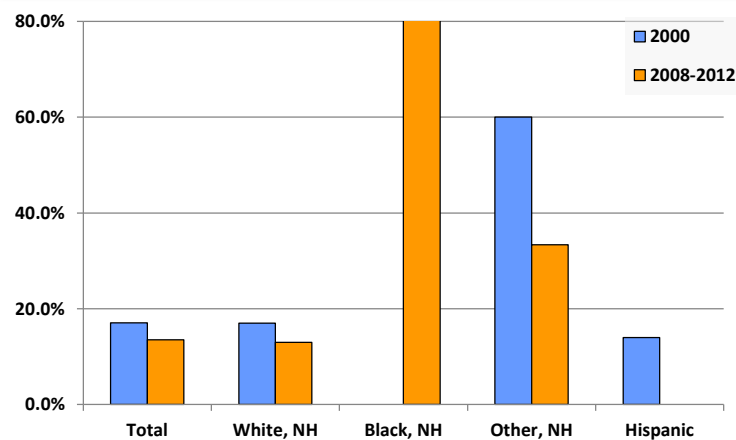
Average Household Size, 2010



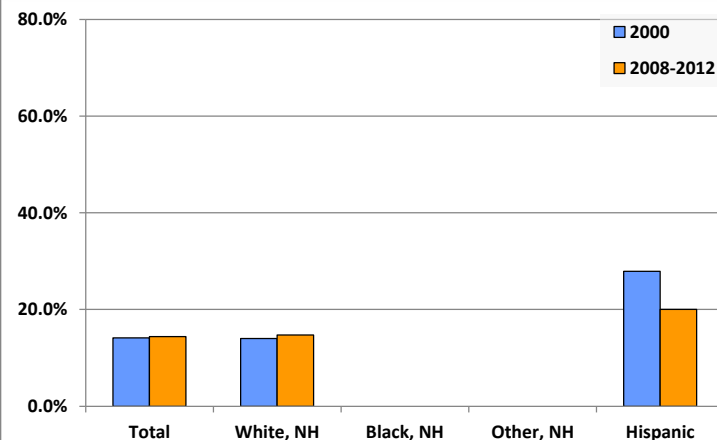
Living Arrangements 65+, 2008-2012



Percent of Adults that Did Not Complete High School



Percent of Adults Who Attained a Bachelor's Degree or Higher



# Reference Data

## Friends Memorial Library

	Total Population	White, Non- Hispanic	Black, Non- Hispanic	Other, Non- Hispanic	Detail for Other, Non-Hispanic					Hispanic or Latino
					AIAN	Asian	NHOPI	Some Other Race	Two or More Races	
A. Total Population										
2000 Total	5,847	5,765	6	39	4	7	1	7	20	37
2000 pct of Total	100.0%	98.6%	0.1%	0.7%	0.1%	0.1%	0.0%	0.1%	0.3%	0.6%
2010 Total	5,380	5,270	12	69	9	19	1	1	39	29
2010 pct of Total	100.0%	98.0%	0.2%	1.3%	0.2%	0.4%	0.0%	0.0%	0.7%	0.5%
B. Population by Major Age Groups by Race and Ethnicity										
2000										
0-19	1,457	1,420	4	13	0	0	0	4	9	20
20-64	3,248	3,210	2	21	4	6	1	3	7	15
65+	1,142	1,135	0	5	0	1	0	0	4	2
85+	191	191	0	0	0	0	0	0	0	0
2010										
0-19	1,341	1,294	4	31	2	6	0	0	23	12
20-64	3,004	2,948	7	36	7	11	1	1	16	13
65+	1,035	1,028	1	2	0	2	0	0	0	4
85+	207	206	0	0	0	0	0	0	0	1
C. Age Mix for Each Racial and Ethnic Group										
2000										
0-19	24.9%	24.6%	66.7%	33.3%	0.0%	0.0%	0.0%	57.1%	45.0%	54.1%
20-64	55.5%	55.7%	33.3%	53.8%	100.0%	85.7%	100.0%	42.9%	35.0%	40.5%
65+	19.5%	19.7%	0.0%	12.8%	0.0%	14.3%	0.0%	0.0%	20.0%	5.4%
85+	3.3%	3.3%	0.0%	0.0%	0.0%	0.0%	0.0%	0.0%	0.0%	0.0%
2010										
0-19	24.9%	24.6%	33.3%	44.9%	22.2%	31.6%	0.0%	0.0%	59.0%	41.4%
20-64	55.8%	55.9%	58.3%	52.2%	77.8%	57.9%	100.0%	100.0%	41.0%	44.8%
65+	19.2%	19.5%	8.3%	2.9%	0.0%	10.5%	0.0%	0.0%	0.0%	13.8%
85+	3.8%	3.9%	0.0%	0.0%	0.0%	0.0%	0.0%	0.0%	0.0%	3.4%
D. Racial and Ethnic Composition of Each Age Group										
2000										
0-19	100.0%	97.5%	0.3%	0.9%	0.0%	0.0%	0.0%	0.3%	0.6%	1.4%
20-64	100.0%	98.8%	0.1%	0.6%	0.1%	0.2%	0.0%	0.1%	0.2%	0.5%
65+	100.0%	99.4%	0.0%	0.4%	0.0%	0.1%	0.0%	0.0%	0.4%	0.2%
85+	100.0%	100.0%	0.0%	0.0%	0.0%	0.0%	0.0%	0.0%	0.0%	0.0%
2010										
0-19	100.0%	96.5%	0.3%	2.3%	0.1%	0.4%	0.0%	0.0%	1.7%	0.9%
20-64	100.0%	98.1%	0.2%	1.2%	0.2%	0.4%	0.0%	0.0%	0.5%	0.4%
65+	100.0%	99.3%	0.1%	0.2%	0.0%	0.2%	0.0%	0.0%	0.0%	0.4%
85+	100.0%	99.5%	0.0%	0.0%	0.0%	0.0%	0.0%	0.0%	0.0%	0.5%
E. Population Growth										
2000-2010, Change										
0-19	-116	-126	0	18	2	6	0	-4	14	-8
20-64	-244	-262	5	15	3	5	0	-2	9	-2
65+	-107	-107	1	-3	0	1	0	0	-4	2
85+	16	15	0	0	0	0	0	0	0	1
Total	-467	-495	6	30	5	12	0	-6	19	-8
2000-2010, Pct Change										
0-19	-8.0%	-8.9%	0.0%	138.5%	0.0%	0.0%	0.0%	-100.0%	155.6%	-40.0%
20-64	-7.5%	-8.2%	250.0%	71.4%	75.0%	83.3%	0.0%	-66.7%	128.6%	-13.3%
65+	-9.4%	-9.4%	0.0%	-60.0%	0.0%	100.0%	0.0%	0.0%	-100.0%	100.0%
85+	8.4%	7.9%	0.0%	0.0%	0.0%	0.0%	0.0%	0.0%	0.0%	0.0%
Total	-8.0%	-8.6%	100.0%	76.9%	125.0%	171.4%	0.0%	-85.7%	95.0%	-21.6%

Source: Decennial Census 2010, 2000, American Community Survey 2008-2012

Prepared for the Pennsylvania State Library by The Pennsylvania State Data Center, 9/2014

# Reference Data

## Friends Memorial Library

	Total Population	White, Non- Hispanic	Black, Non- Hispanic	Other, Non- Hispanic	Detail for Other, Non-Hispanic					Hispanic or Latino
					AIAN	Asian	NHOPI	Some Other Race	Two or More Races	
F. Population by Library-Defined Age Groups, 2010										
0-5	357	346	2	7	0	1	0	0	6	2
6-10	340	327	1	9	1	1	0	0	7	3
11-13	234	227	1	4	0	2	0	0	2	2
14-18	371	355	0	11	1	2	0	0	8	5
19-32	668	653	3	11	3	4	0	0	4	1
33-45	876	862	2	6	2	0	0	0	4	6
46-64	1,499	1,472	2	19	2	7	1	1	8	6
65-84	828	822	1	2	0	2	0	0	0	3
85+	207	206	0	0	0	0	0	0	0	1
Total	5,380	5,270	12	69	9	19	1	1	39	29
G. Population by 5-Year Age Cohorts, 2010										
0-4	293	285	0	6	0	1	0	0	5	2
5-9	339	324	3	10	1	1	0	0	8	2
10-14	372	360	1	7	1	2	0	0	4	4
15-19	337	325	0	8	0	2	0	0	6	4
20-24	221	211	3	7	3	2	0	0	2	0
25-29	222	218	0	3	0	1	0	0	2	1
30-34	318	317	0	1	0	1	0	0	0	0
35-39	326	322	0	2	2	0	0	0	0	2
40-44	348	338	2	4	0	0	0	0	4	4
45-49	379	374	0	3	1	1	0	0	1	2
50-54	426	412	2	9	0	2	1	1	5	3
55-59	420	416	0	3	0	1	0	0	2	1
60-64	344	340	0	4	1	3	0	0	0	0
65-69	260	258	0	1	0	1	0	0	0	1
70-74	226	226	0	0	0	0	0	0	0	0
75-79	175	175	0	0	0	0	0	0	0	0
80-84	167	163	1	1	0	1	0	0	0	2
85-89	127	126	0	0	0	0	0	0	0	1
90-94	51	51	0	0	0	0	0	0	0	0
95-99	23	23	0	0	0	0	0	0	0	0
100+	6	6	0	0	0	0	0	0	0	0
Total	5,380	5,270	12	69	9	19	1	1	39	29

# Reference Data

## Friends Memorial Library

### H. Income Distribution, 2008-2012

Range (in thousands)	Households	Pct of Total
<\$10K	246	10.9%
\$10K to <\$25K	422	18.7%
\$25K to <\$50K	709	31.5%
\$50K to <\$75K	461	20.5%
\$75K to <\$100K	231	10.2%
\$100K to <\$150K	159	7.1%
\$150K+	26	1.2%

### I. Household Type, 2010

Household Type	2000	2000pct	2010	2010pct
Total Households	2,475	100.0%	2,285	100.0%
Family Households	1,616	65.3%	1,477	64.6%
Husband-wife, no children w/children	521	21.1%	376	16.5%
Female head, no husband, w/ children	131	5.3%	159	7.0%
Male head, no wife, w/ children	56	2.3%	68	3.0%
Without children	908	36.7%	874	38.2%
Nonfamily households	859	34.7%	808	35.4%
Living alone	770	31.1%	709	31.0%
Other nonfamily	89	3.6%	99	4.3%

### J. Household Type by Race and Ethnicity, 2008-2012

Household Type	White, NH	Black, NH	Other, NH	Hispanic
Total Households	2,249	5	22	13
Husband wife family	48.5%	20.0%	31.8%	30.8%
Family with male head, no wife	5.4%	0.0%	4.5%	7.7%
family with female head, no husband	10.8%	20.0%	27.3%	23.1%
Living alone	31.1%	0.0%	31.8%	38.5%
Other nonfamily	4.2%	60.0%	4.5%	0.0%

### K. Poverty, 2008-2012

Families	Poverty	PA
All families	7.9%	9.1%
Families w/ related children	16.0%	15.3%
Female householder, no husband present	39.3%	28.8%
Female householder, no husband present, w/ related children	48.1%	39.2%
All people	13.4%	13.1%
Under 18 years	15.2%	18.4%
18 to 64 years	13.9%	12.3%
65 years and over	9.3%	8.4%

### L. Educational Attainment by Race and Ethnicity, 2008-2012

Education Level	White, NH	Black	Other	Hispanic	Total
Population 25 years and over	3,583	1	90	10	3,676
Less than high school	13.0%	100.0%	33%	0.0%	13.5%
High school graduate (includes equivalency)	47.7%	0.0%	56%	80.0%	47.9%
Some college or associates degree	24.6%	0.0%	11%	0.0%	24.2%
Bachelors degree or higher	14.7%	0.0%	0%	20.0%	14.4%

### M. Occupation, 2008-2012

Occupation	Estimate	Percent
Civilian population age 16 years and over	2,205	100.0%
Management, professional, and related occupations	612	27.8%
Service occupations	418	19.0%
Sales and office occupations	420	19.0%
Farming, fishing, and forestry occupations	47	2.1%
Construction, extraction, maintenance, and repair occupations	289	13.1%
Production, transportation, and material moving occupations	419	19.0%

### N. Class of Worker, 2008-2012

Occupation	Estimate	Percent
Civilian population age 16 years and over	2,205	100.0%
Private, for profit, wage and salary employee	1,417	64.3%
Private, not for profit, wage and salary employee	300	13.6%
Private, for profit, wage and salary self-employed in own business	69	3.1%
Government workers	275	12.5%
Self-employed in own not incorporated business	139	6.3%
Unpaid family workers in family business	5	0.2%