

Demographic Profile Galeton Public Library

Population Growth: The total population of the Galeton Public Library service area decreased by -7.1 percent over the past decade to 1,866; this decline rate was lower than the statewide rate of 3.4 percent.

Age and Sex: In 2010, the Galeton Public Library service area had a total population of 1,866 - 919 males (49.2 percent) and 947 females (50.8 percent). The age structure of the population in 2010 was as follows: 22.3 percent of the population was under 20 years old, 57.0 percent was 20 to 64 years old and 20.7 percent was 65 years or older.

Race and Ethnicity: For people reporting one race alone, not of Hispanic ethnicity, 96.7 percent were White; .6 percent were Black or African American; 1.8 percent were Other Race Alone.¹ A total of 16 or .9 percent of the population were Hispanic.²

Households: In 2010, there were 820 households in the Galeton Public Library service area. The average household size was 2.28 people. Families made up 65.1 percent of the households. This figure includes both families with (23.2 percent) and without (42.0 percent) children. Of families with children less than 18 years old, 13.2 percent were married-couple families, 6.5 percent were female householder families with no husband present, and the remaining (3.5 percent) were male-headed households with no wife present.

Education: The educational attainment of the population 25 years and over was lower in the Galeton Public Library service area than in Pennsylvania. During the period 2008-2012, 9.2 percent of residents had earned a Bachelor's degree or higher, compared with 27.0 percent statewide. A total of 227 or 16.8 percent had not completed high school, compared with 11.7 percent for the commonwealth as a whole.

Income and Poverty: Households with incomes of less than \$25,000 (36.5 percent) made up the largest percent of households in the Galeton Public Library service area in 2008-2012. For comparison, 23.6 percent of commonwealth households were in this range during the period.

In 2008-2012, the overall poverty rate for the Galeton Public Library service area was higher than Pennsylvania (17.8 percent compared to 13.1 percent). The poverty rate for the population under 18 years of age was 28.4 percent, compared with 16.7 percent of people 18 to 64 years and 10.9 percent for those aged 65 years and over. A total of 71 or 13.6 percent of all families had incomes below poverty level. In 2008-2012, 19.4 percent of families with related children and 42.3 percent of families with a female householder and no husband with related children present had incomes below the poverty level.

Class of Worker and Occupation: In 2008-2012, 70.1 percent of the workforce was private wage and salary workers; 20.1 percent were federal, state, or local government workers; and 9.8 percent were self-employed in their own (not incorporated) business.

The top occupation group for the civilian employed population 16 years and over in the Galeton Public Library service area in 2008-2012 was Sales and office (24.8 percent).

¹ Other race includes those who identified themselves as American Indian/Alaska Native, Asian, Native Hawaiian/Other Pacific Islander, Some Other Race and Two or More Races on the 2010 Census form.

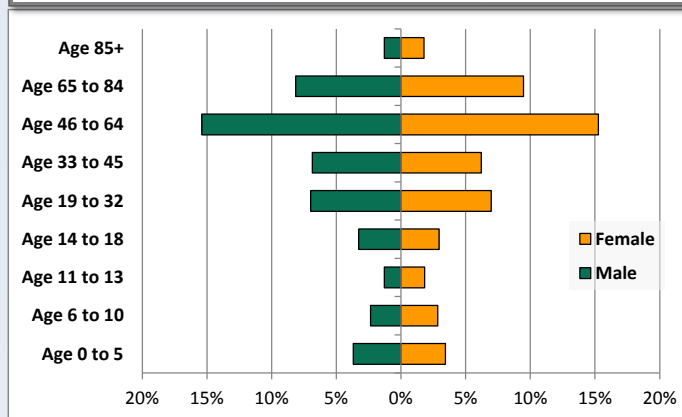
² People of Hispanic origin may be of any race.

Demographic Profile

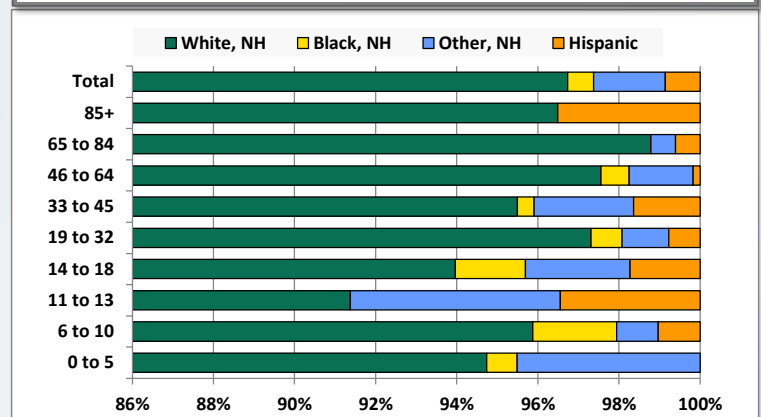
Galeton Public Library

Key Indicators		
	2000	2010
Population Growth		
Total Population	2,009	1,866
10-Year Growth	N/A	-7.1%
Diversity		
White Alone, Non-Hispanic	97.3%	96.7%
Black Alone, Non-Hispanic	0.6%	0.6%
Other Race Alone, Non-Hispanic	1.5%	1.8%
Percent Hispanic	0.5%	0.9%
Aging		
Percent 65 Years and Over	22.0%	20.7%
Households		
Percent Married Couple with Own Children	19.8%	13.2%
Percent Living Alone	25.1%	29.8%

Population by Library-Defined Age Group, 2010



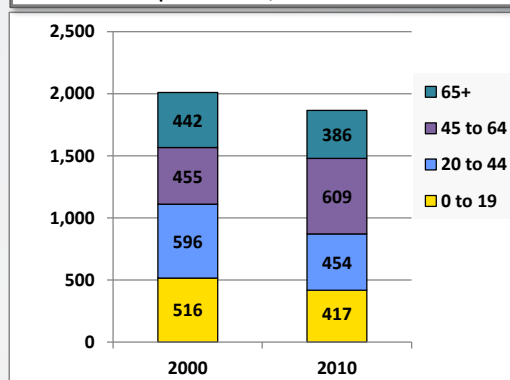
Race/Ethnicity by Library-Defined Age Group, 2010



Population Growth by Library-Defined Age Group, 2000 to 2010

Age Group	2010	Change	
		Numeric	Percent
Total	1,866	-143	-7.1%
85+	57	-5	-8.1%
65 to 84	329	-51	-13.4%
46 to 64	572	144	33.6%
33 to 45	244	-167	-40.6%
19 to 32	260	24	10.2%
14 to 18	116	-27	-18.9%
11 to 13	58	-42	-42.0%
6 to 10	97	-20	-17.1%
0 to 5	133	1	0.8%

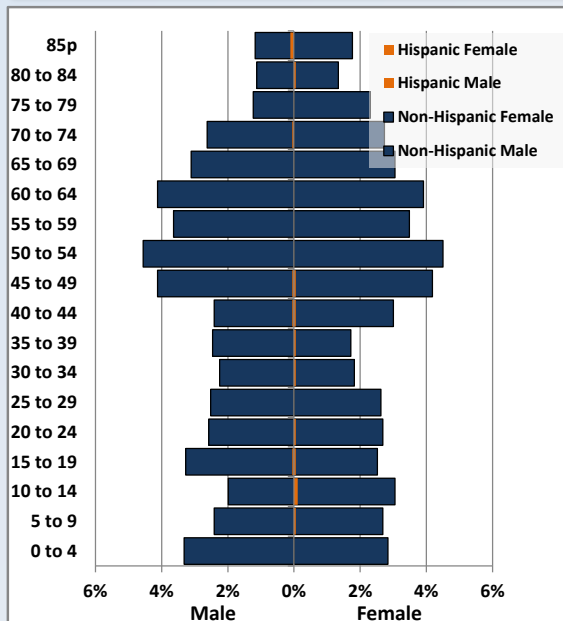
Population Total, 2000 and 2010



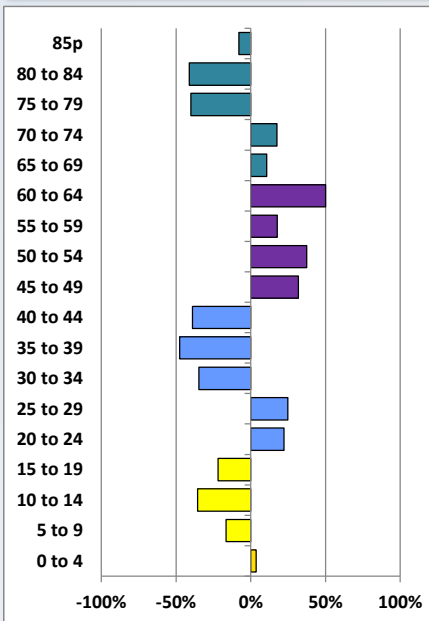
Demographic Profile

Galeton Public Library

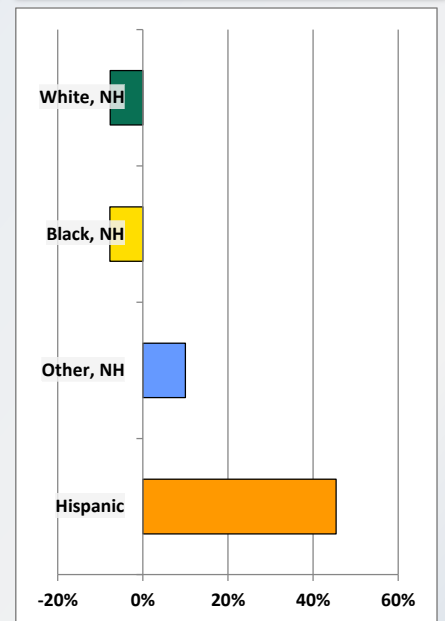
Population by 5-Year Age Cohorts



Pop Change by Age, 2000 to 2010

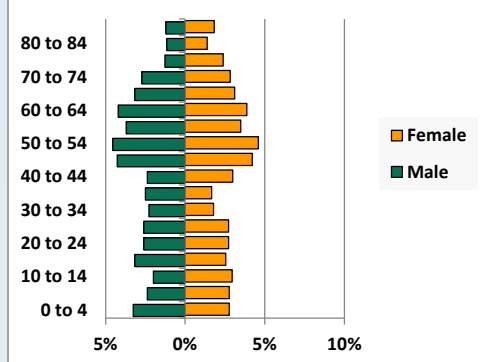


Pop Change by Race/Ethnicity, 2000 to 2010

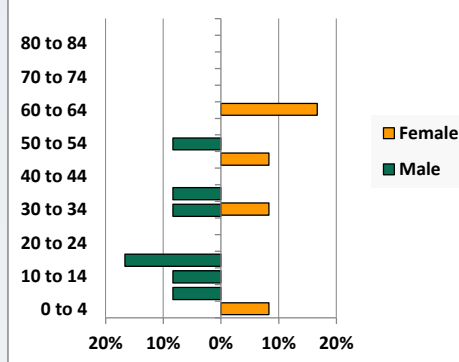


Population by Age, Race and Ethnicity 2010

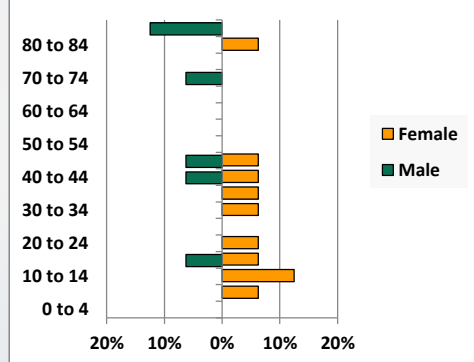
White, Not Hispanic



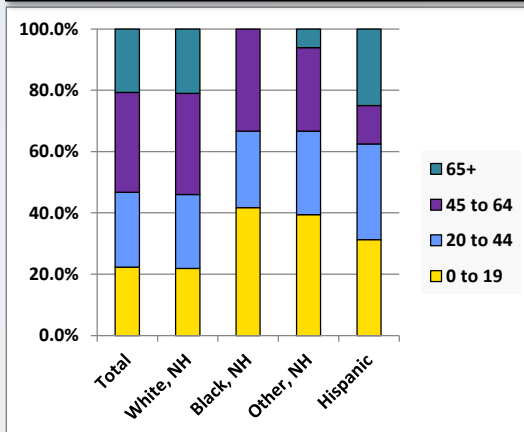
Black, Non-Hispanic



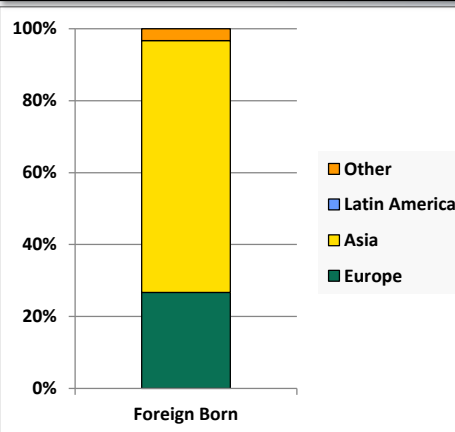
Hispanic



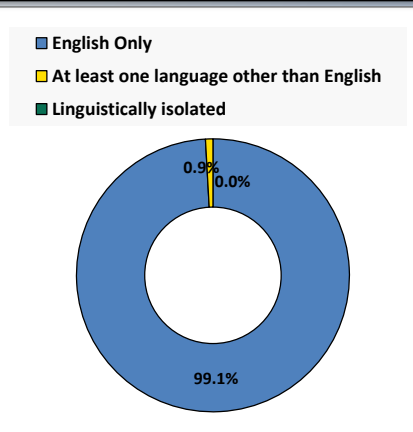
Age by Race and Ethnicity, 2010



Foreign Born, 2010



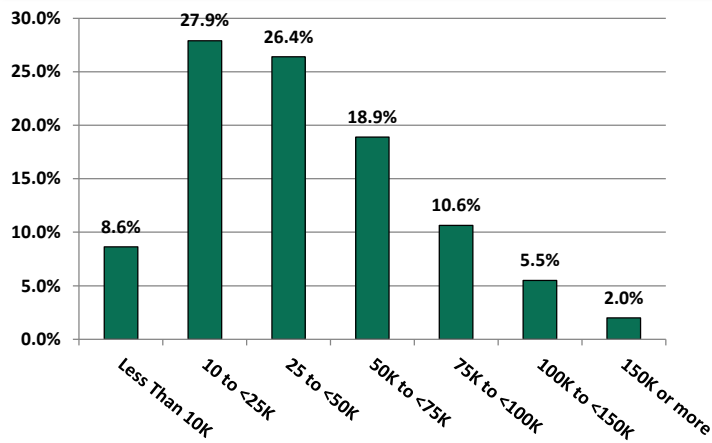
Household Language, 2010



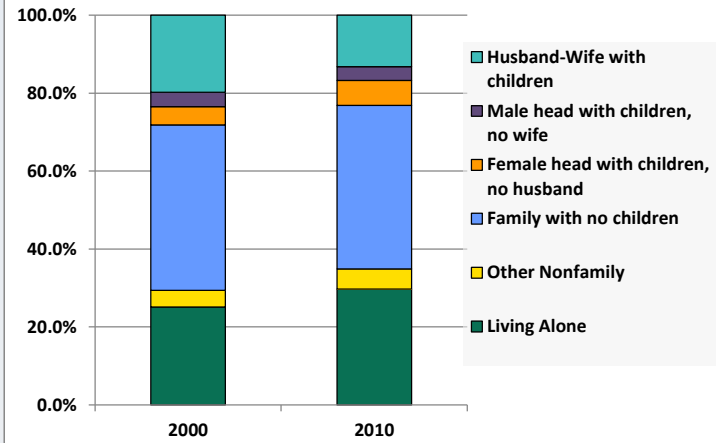
Demographic Profile

Galeton Public Library

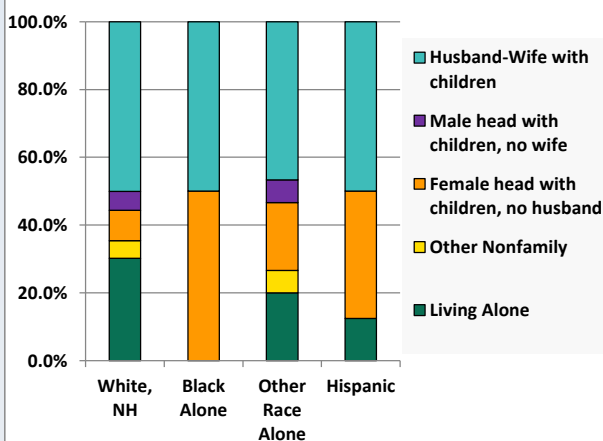
Household Income Distribution, 2008-2012



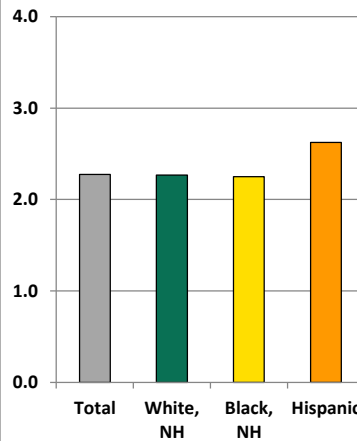
Household Type, 2000 and 2010



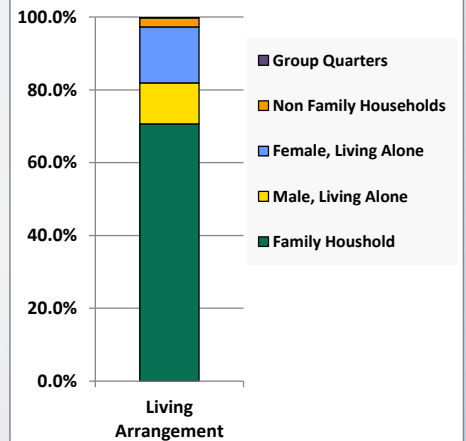
Household Type by Race/Ethnicity, 2010



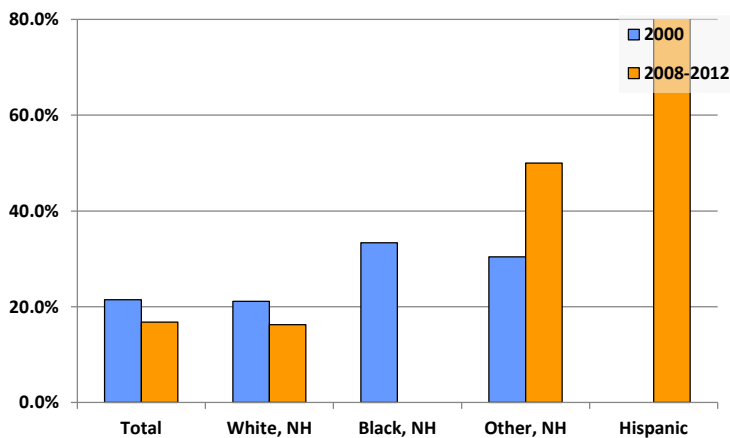
Average Household Size, 2010



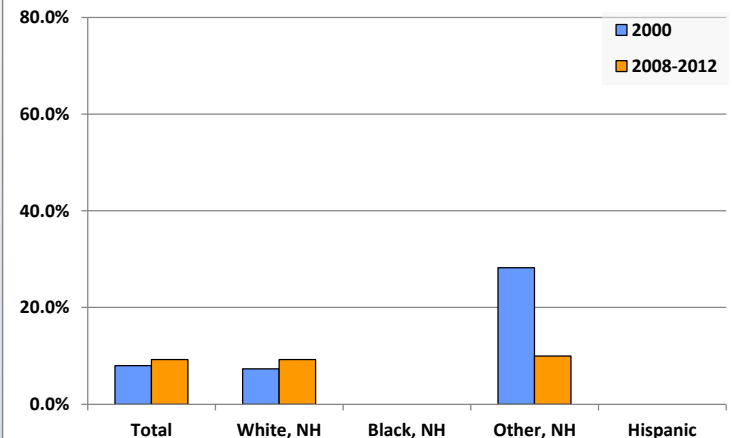
Living Arrangements 65+, 2008-2012



Percent of Adults that Did Not Complete High School



Percent of Adults Who Attained a Bachelor's Degree or Higher



Reference Data

Galeton Public Library

					Detail for Other, Non-Hispanic					
	Total Population	White, Non- Hispanic	Black, Non- Hispanic	Other, Non- Hispanic	AIAN	Asian	NHOPI	Some Other	Two or More	Hispanic or
								Race	Races	Latino
A. Total Population										
2000 Total	2,009	1,955	13	30	5	12	0	0	13	11
2000 pct of Total	100.0%	97.3%	0.6%	1.5%	0.2%	0.6%	0.0%	0.0%	0.6%	0.5%
2010 Total	1,866	1,805	12	33	1	7	0	0	25	16
2010 pct of Total	100.0%	96.7%	0.6%	1.8%	0.1%	0.4%	0.0%	0.0%	1.3%	0.9%
B. Population by Major Age Groups by Race and Ethnicity										
2000										
0-19	516	494	6	9	1	6	0	0	2	7
20-64	1,051	1,026	5	16	4	4	0	0	8	4
65+	442	435	2	5	0	2	0	0	3	0
85+	62	60	2	0	0	0	0	0	0	0
2010										
0-19	417	394	5	13	0	4	0	0	9	5
20-64	1,063	1,031	7	18	1	3	0	0	14	7
65+	386	380	0	2	0	0	0	0	2	4
85+	57	55	0	0	0	0	0	0	0	2
C. Age Mix for Each Racial and Ethnic Group										
2000										
0-19	25.7%	25.3%	46.2%	30.0%	20.0%	50.0%	0.0%	0.0%	15.4%	63.6%
20-64	52.3%	52.5%	38.5%	53.3%	80.0%	33.3%	0.0%	0.0%	61.5%	36.4%
65+	22.0%	22.3%	15.4%	16.7%	0.0%	16.7%	0.0%	0.0%	23.1%	0.0%
85+	3.1%	3.1%	15.4%	0.0%	0.0%	0.0%	0.0%	0.0%	0.0%	0.0%
2010										
0-19	22.3%	21.8%	41.7%	39.4%	0.0%	57.1%	0.0%	0.0%	36.0%	31.3%
20-64	57.0%	57.1%	58.3%	54.5%	100.0%	42.9%	0.0%	0.0%	56.0%	43.8%
65+	20.7%	21.1%	0.0%	6.1%	0.0%	0.0%	0.0%	0.0%	8.0%	25.0%
85+	3.1%	3.0%	0.0%	0.0%	0.0%	0.0%	0.0%	0.0%	0.0%	12.5%
D. Racial and Ethnic Composition of Each Age Group										
2000										
0-19	100.0%	95.7%	1.2%	1.7%	0.2%	1.2%	0.0%	0.0%	0.4%	1.4%
20-64	100.0%	97.6%	0.5%	1.5%	0.4%	0.4%	0.0%	0.0%	0.8%	0.4%
65+	100.0%	98.4%	0.5%	1.1%	0.0%	0.5%	0.0%	0.0%	0.7%	0.0%
85+	100.0%	96.8%	3.2%	0.0%	0.0%	0.0%	0.0%	0.0%	0.0%	0.0%
2010										
0-19	100.0%	94.5%	1.2%	3.1%	0.0%	1.0%	0.0%	0.0%	2.2%	1.2%
20-64	100.0%	97.0%	0.7%	1.7%	0.1%	0.3%	0.0%	0.0%	1.3%	0.7%
65+	100.0%	98.4%	0.0%	0.5%	0.0%	0.0%	0.0%	0.0%	0.5%	1.0%
85+	100.0%	96.5%	0.0%	0.0%	0.0%	0.0%	0.0%	0.0%	0.0%	3.5%
E. Population Growth										
2000-2010, Change										
0-19	-99	-100	-1	4	-1	-2	0	0	7	-2
20-64	12	5	2	2	-3	-1	0	0	6	3
65+	-56	-55	-2	-3	0	-2	0	0	-1	4
85+	-5	-5	-2	0	0	0	0	0	0	2
Total	-143	-150	-1	3	-4	-5	0	0	12	5
2000-2010, Pct Change										
0-19	-19.2%	-20.2%	-16.7%	44.4%	-100.0%	-33.3%	0.0%	0.0%	350.0%	-28.6%
20-64	1.1%	0.5%	40.0%	12.5%	-75.0%	-25.0%	0.0%	0.0%	75.0%	75.0%
65+	-12.7%	-12.6%	-100.0%	-60.0%	0.0%	-100.0%	0.0%	0.0%	-33.3%	0.0%
85+	-8.1%	-8.3%	-100.0%	0.0%	0.0%	0.0%	0.0%	0.0%	0.0%	0.0%
Total	-7.1%	-7.7%	-7.7%	10.0%	-80.0%	-41.7%	0.0%	0.0%	92.3%	45.5%

Reference Data

Galeton Public Library

	Total Population	White, Non- Hispanic	Black, Non- Hispanic	Other, Non- Hispanic	Detail for Other, Non-Hispanic					Hispanic or Latino
					AIAN	Asian	NHOPI	Some Other Race	Two or More Races	
F. Population by Library-Defined Age Groups, 2010										
0-5	133	126	1	6	0	1	0	0	5	0
6-10	97	93	2	1	0	1	0	0	0	1
11-13	58	53	0	3	0	1	0	0	2	2
14-18	116	109	2	3	0	1	0	0	2	2
19-32	260	253	2	3	0	1	0	0	2	2
33-45	244	233	1	6	0	1	0	0	5	4
46-64	572	558	4	9	1	1	0	0	7	1
65-84	329	325	0	2	0	0	0	0	2	2
85+	57	55	0	0	0	0	0	0	0	2
Total	1,866	1,805	12	33	1	7	0	0	25	16
G. Population by 5-Year Age Cohorts, 2010										
0-4	115	109	1	5	0	1	0	0	4	0
5-9	96	93	1	1	0	0	0	0	1	1
10-14	96	89	1	4	0	2	0	0	2	2
15-19	110	103	2	3	0	1	0	0	2	2
20-24	99	96	0	2	0	0	0	0	2	1
25-29	96	96	0	0	0	0	0	0	0	0
30-34	77	73	2	1	0	1	0	0	0	1
35-39	79	75	1	2	0	1	0	0	1	1
40-44	103	97	0	4	0	0	0	0	4	2
45-49	157	153	1	1	0	0	0	0	1	2
50-54	169	165	1	3	1	1	0	0	1	0
55-59	133	130	0	3	0	0	0	0	3	0
60-64	150	146	2	2	0	0	0	0	2	0
65-69	115	113	0	2	0	0	0	0	2	0
70-74	101	100	0	0	0	0	0	0	0	1
75-79	66	66	0	0	0	0	0	0	0	0
80-84	47	46	0	0	0	0	0	0	0	1
85-89	44	42	0	0	0	0	0	0	0	2
90-94	11	11	0	0	0	0	0	0	0	0
95-99	2	2	0	0	0	0	0	0	0	0
100+	0	0	0	0	0	0	0	0	0	0
Total	1,866	1,805	12	33	1	7	0	0	25	16

Source: Decennial Census 2010, 2000, American Community Survey 2008-2012

Prepared for the Pennsylvania State Library by The Pennsylvania State Data Center, 9/2014

Reference Data

Galeton Public Library

H. Income Distribution, 2008-2012

Range (in thousands)	Households	Pct of Total
<\$10K	69	8.6%
\$10K to <\$25K	223	27.9%
\$25K to <\$50K	211	26.4%
\$50K to <\$75K	151	18.9%
\$75K to <\$100K	85	10.6%
\$100K to <\$150K	44	5.5%
\$150K+	16	2.0%

I. Household Type, 2010

Household Type	2000	2000pct	2010	2010pct
Total Households	793	100.0%	820	100.0%
Family Households	560	70.6%	534	65.1%
Husband-wife, no children w/children	157	19.8%	108	13.2%
Female head, no husband, w/ children	37	4.7%	53	6.5%
Male head, no wife, w/ children	29	3.7%	29	3.5%
Without children	337	42.5%	344	42.0%
Nonfamily households	233	29.4%	286	34.9%
Living alone	199	25.1%	244	29.8%
Other nonfamily	34	4.3%	42	5.1%

J. Household Type by Race and Ethnicity, 2008-2012

Household Type	White, NH	Black, NH	Other, NH	Hispanic
Total Households	797	4	15	8
Husband wife family	50.1%	50.0%	46.7%	50.0%
Family with male head, no wife	5.5%	0.0%	6.7%	0.0%
family with female head, no husband	9.0%	50.0%	20.0%	37.5%
Living alone	30.2%	0.0%	20.0%	12.5%
Other nonfamily	5.1%	0.0%	6.7%	0.0%

K. Poverty, 2008-2012

Families	Poverty	PA
All families	13.6%	9.1%
Families w/ related children	19.4%	15.3%
Female householder, no husband present	42.9%	28.8%
Female householder, no husband present, w/ related children	42.3%	39.2%
All people	17.8%	13.1%
Under 18 years	28.4%	18.4%
18 to 64 years	16.7%	12.3%
65 years and over	10.9%	8.4%

L. Educational Attainment by Race and Ethnicity, 2008-2012

Education Level	White, NH	Black	Other	Hispanic	Total
Population 25 years and over	1,331	1	20	1	1,353
Less than high school	16.2%	0.0%	50%	100.0%	16.8%
High school graduate (includes equivalency)	48.8%	0.0%	30%	0.0%	48.5%
Some college or associates degree	25.7%	100.0%	10%	0.0%	25.5%
Bachelors degree or higher	9.2%	0.0%	10%	0.0%	9.2%

M. Occupation, 2008-2012

Occupation	Estimate	Percent
Civilian population age 16 years and over	702	100.0%
Management, professional, and related occupations	155	22.1%
Service occupations	113	16.1%
Sales and office occupations	174	24.8%
Farming, fishing, and forestry occupations	0	0.0%
Construction, extraction, maintenance, and repair occupations	99	14.1%
Production, transportation, and material moving occupations	161	22.9%

N. Class of Worker, 2008-2012

Occupation	Estimate	Percent
Civilian population age 16 years and over	702	100.0%
Private, for profit, wage and salary employee	430	61.3%
Private, not for profit, wage and salary employee	51	7.3%
Private, for profit, wage and salary self-employed in own business	11	1.6%
Government workers	141	20.1%
Self-employed in own not incorporated business	69	9.8%
Unpaid family workers in family business	0	0.0%