

Demographic Profile Green Free Library

Population Growth: The total population of the Green Free Library service area increased by 6.6 percent over the past decade to 6,124; this growth rate was higher than the statewide rate of 3.4 percent.

Age and Sex: In 2010, the Green Free Library service area had a total population of 6,124 - 3,027 males (49.4 percent) and 3,097 females (50.6 percent). The age structure of the population in 2010 was as follows: 27.3 percent of the population was under 20 years old, 54.7 percent was 20 to 64 years old and 18.0 percent was 65 years or older.

Race and Ethnicity: For people reporting one race alone, not of Hispanic ethnicity, 97.9 percent were White; .4 percent were Black or African American; 1.0 percent were Other Race Alone.¹ A total of 43 or .7 percent of the population were Hispanic.²

Households: In 2010, there were 2,388 households in the Green Free Library service area. The average household size was 2.55 people. Families made up 70.4 percent of the households. This figure includes both families with (29.2 percent) and without (41.2 percent) children. Of families with children less than 18 years old, 21.1 percent were married-couple families, 5.2 percent were female householder families with no husband present, and the remaining (2.9 percent) were male-headed households with no wife present.

Education: The educational attainment of the population 25 years and over was lower in the Green Free Library service area than in Pennsylvania. During the period 2008-2012, 11.7 percent of residents had earned a Bachelor's degree or higher, compared with 27.0 percent statewide. A total of 611 or 14.5 percent had not completed high school, compared with 11.7 percent for the commonwealth as a whole.

Income and Poverty: Households with incomes of \$25,000 to \$49,999 (32.3 percent) made up the largest percent of households in the Green Free Library service area in 2008-2012. For comparison, 24.4 percent of commonwealth households were in this range during the period.

In 2008-2012, the overall poverty rate for the Green Free Library service area was higher than Pennsylvania (15.1 percent compared to 13.1 percent). The poverty rate for the population under 18 years of age was 19.1 percent, compared with 14.8 percent of people 18 to 64 years and 10.7 percent for those aged 65 years and over. A total of 173 or 10.7 percent of all families had incomes below poverty level. In 2008-2012, 15.1 percent of families with related children and 44.0 percent of families with a female householder and no husband with related children present had incomes below the poverty level.

Class of Worker and Occupation: In 2008-2012, 76.7 percent of the workforce was private wage and salary workers; 11.6 percent were federal, state, or local government workers; and 11.5 percent were self-employed in their own (not incorporated) business.

The top occupation group for the civilian employed population 16 years and over in the Green Free Library service area in 2008-2012 was Management, business, science, and arts (25.8 percent).

¹ Other race includes those who identified themselves as American Indian/Alaska Native, Asian, Native Hawaiian/Other Pacific Islander, Some Other Race and Two or More Races on the 2010 Census form.

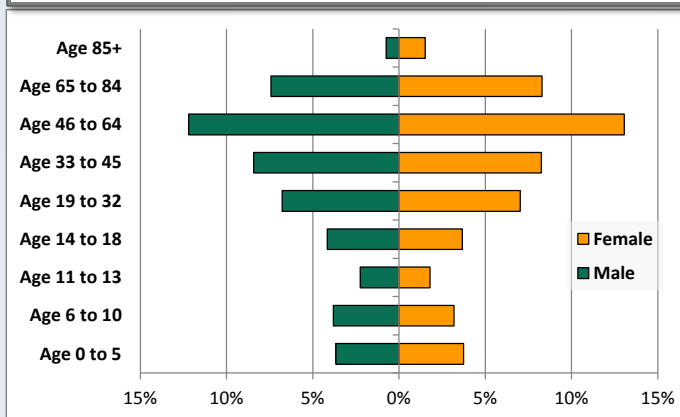
² People of Hispanic origin may be of any race.

Demographic Profile

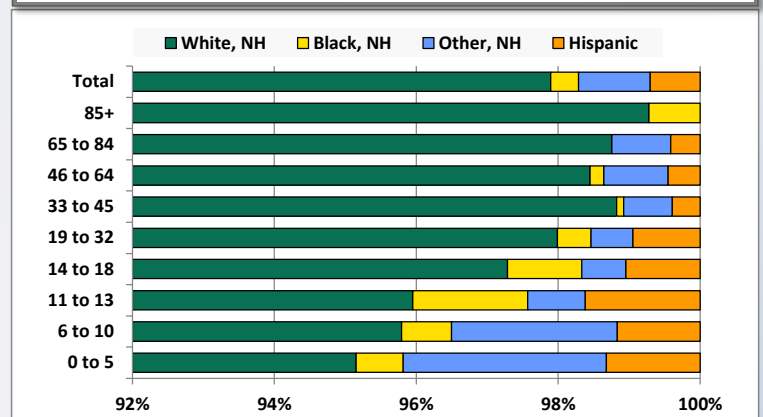
Green Free Library - Bradford

Key Indicators		
	2000	2010
Population Growth		
Total Population	5,743	6,124
10-Year Growth	N/A	6.6%
Diversity		
White Alone, Non-Hispanic	98.3%	97.9%
Black Alone, Non-Hispanic	0.5%	0.4%
Other Race Alone, Non-Hispanic	0.8%	1.0%
Percent Hispanic	0.5%	0.7%
Aging		
Percent 65 Years and Over	15.2%	18.0%
Households		
Percent Married Couple with Own Children	24.4%	21.1%
Percent Living Alone	24.2%	24.7%

Population by Library-Defined Age Group, 2010



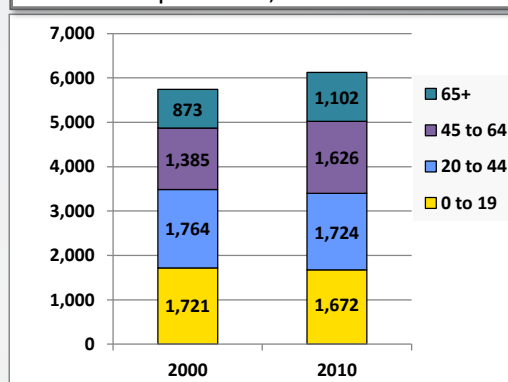
Race/Ethnicity by Library-Defined Age Group, 2010



Population Growth by Library-Defined Age Group, 2000 to 2010

Age Group	2010	Change	
		Numeric	Percent
Total	6,124	381	6.6%
85+	139	46	49.5%
65 to 84	963	183	23.5%
46 to 64	1,547	246	18.9%
33 to 45	1,021	-31	-2.9%
19 to 32	846	-29	-3.3%
14 to 18	479	16	3.5%
11 to 13	247	-34	-12.1%
6 to 10	428	-33	-7.2%
0 to 5	454	17	3.9%

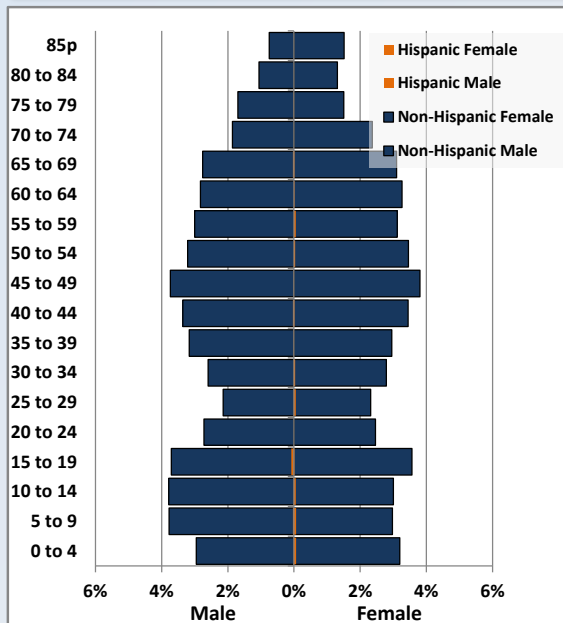
Population Total, 2000 and 2010



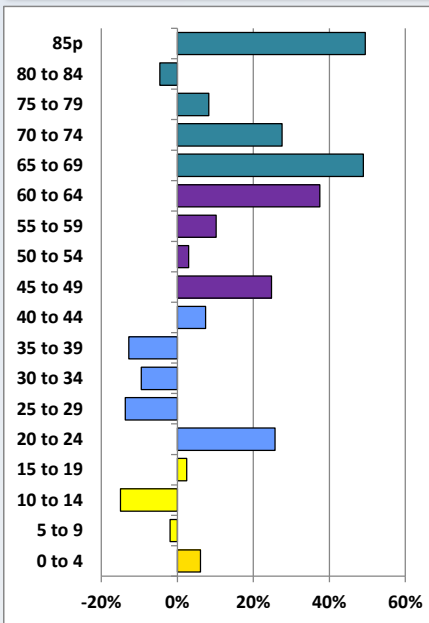
Demographic Profile

Green Free Library - Bradford

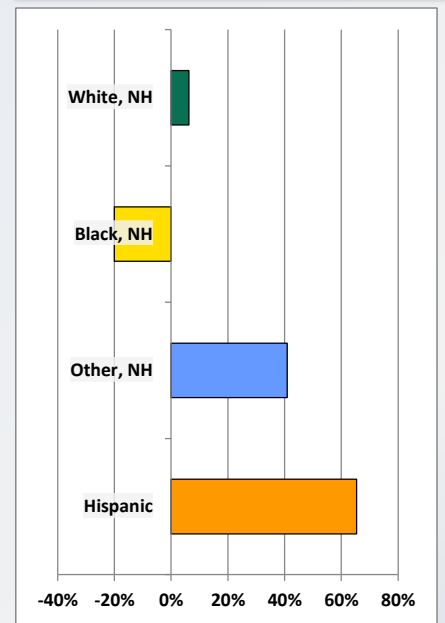
Population by 5-Year Age Cohorts



Pop Change by Age, 2000 to 2010

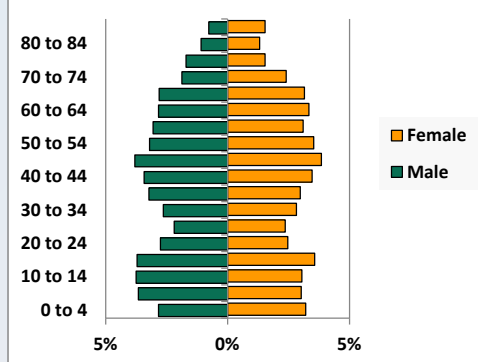


Pop Change by Race/Ethnicity, 2000 to 2010

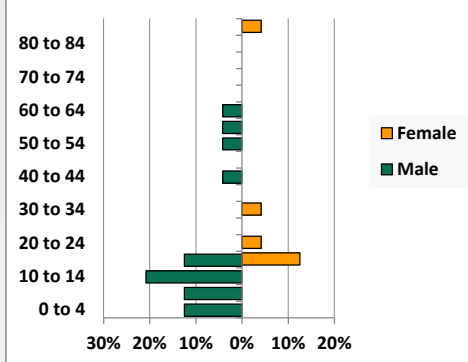


Population by Age, Race and Ethnicity 2010

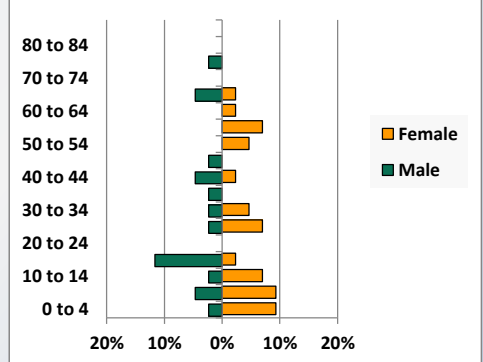
White, Not Hispanic



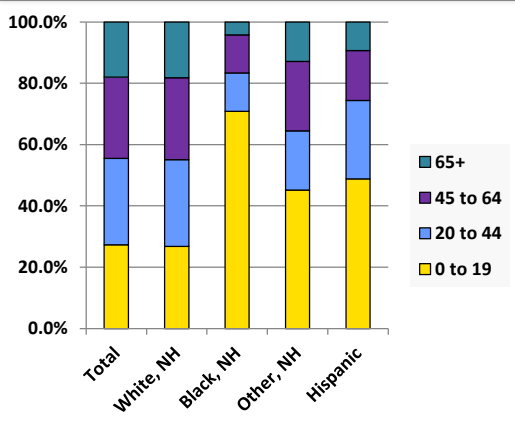
Black, Non-Hispanic



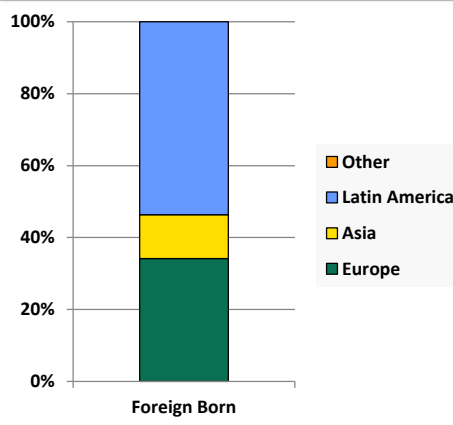
Hispanic



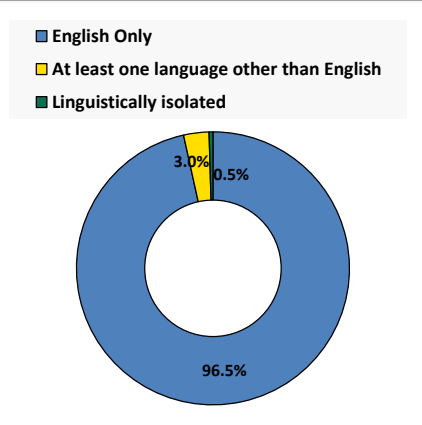
Age by Race and Ethnicity, 2010



Foreign Born, 2010



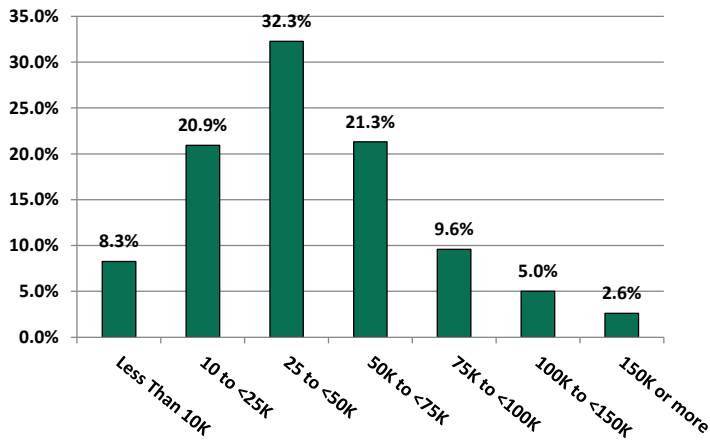
Household Language, 2010



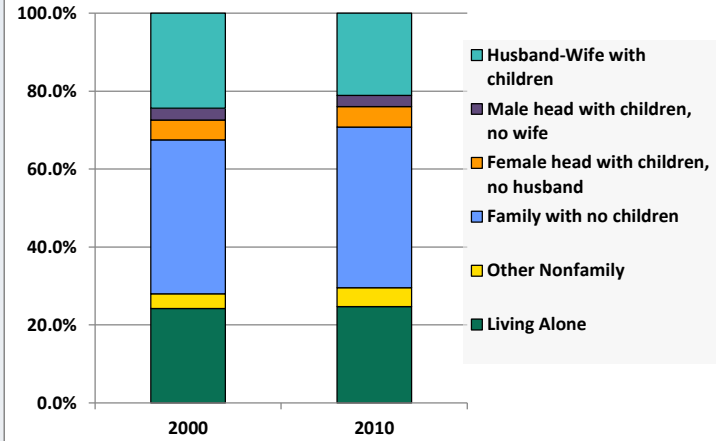
Demographic Profile

Green Free Library - Bradford

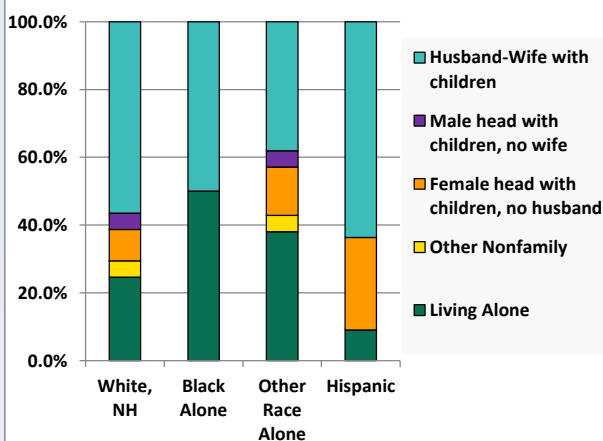
Household Income Distribution, 2008-2012



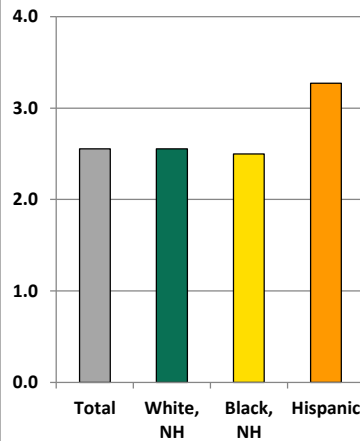
Household Type, 2000 and 2010



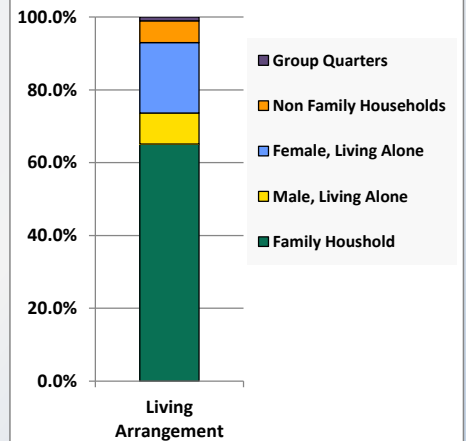
Household Type by Race/Ethnicity, 2010



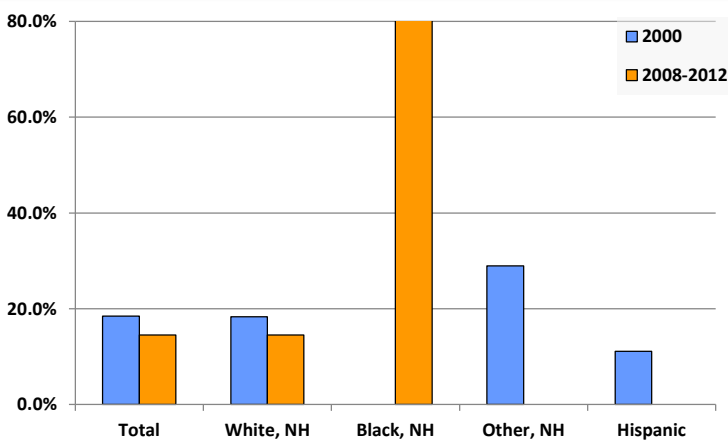
Average Household Size, 2010



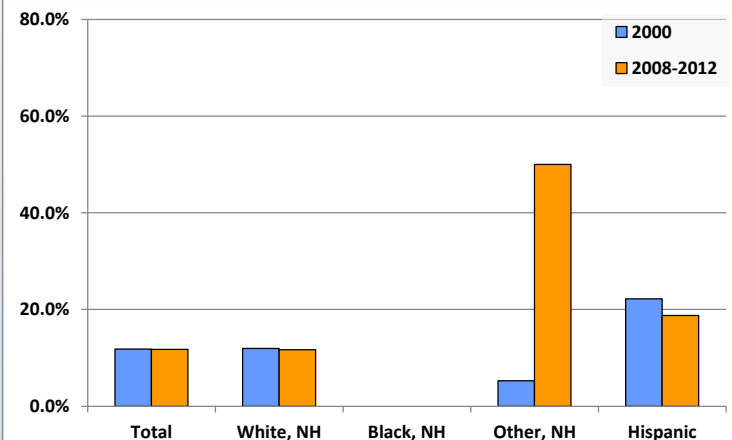
Living Arrangements 65+, 2008-2012



Percent of Adults that Did Not Complete High School



Percent of Adults Who Attained a Bachelor's Degree or Higher



Reference Data

Green Free Library - Bradford

	Total Population	White, Non- Hispanic	Black, Non- Hispanic	Other, Non- Hispanic	Detail for Other, Non-Hispanic					Hispanic or Latino
					AIAN	Asian	NHOPI	Some Other Race	Two or More Races	
A. Total Population										
2000 Total	5,743	5,643	30	44	5	4	0	0	35	26
2000 pct of Total	100.0%	98.3%	0.5%	0.8%	0.1%	0.1%	0.0%	0.0%	0.6%	0.5%
2010 Total	6,124	5,995	24	62	7	6	1	3	45	43
2010 pct of Total	100.0%	97.9%	0.4%	1.0%	0.1%	0.1%	0.0%	0.0%	0.7%	0.7%
B. Population by Major Age Groups by Race and Ethnicity										
2000										
0-19	1,721	1,667	21	19	2	1	0	0	16	14
20-64	3,149	3,108	7	23	3	3	0	0	17	11
65+	873	868	2	2	0	0	0	0	2	1
85+	93	92	1	0	0	0	0	0	0	0
2010										
0-19	1,672	1,606	17	28	0	3	0	2	23	21
20-64	3,350	3,300	6	26	4	3	1	1	17	18
65+	1,102	1,089	1	8	3	0	0	0	5	4
85+	139	138	1	0	0	0	0	0	0	0
C. Age Mix for Each Racial and Ethnic Group										
2000										
0-19	30.0%	29.5%	70.0%	43.2%	40.0%	25.0%	0.0%	0.0%	45.7%	53.8%
20-64	54.8%	55.1%	23.3%	52.3%	60.0%	75.0%	0.0%	0.0%	48.6%	42.3%
65+	15.2%	15.4%	6.7%	4.5%	0.0%	0.0%	0.0%	0.0%	5.7%	3.8%
85+	1.6%	1.6%	3.3%	0.0%	0.0%	0.0%	0.0%	0.0%	0.0%	0.0%
2010										
0-19	27.3%	26.8%	70.8%	45.2%	0.0%	50.0%	0.0%	66.7%	51.1%	48.8%
20-64	54.7%	55.0%	25.0%	41.9%	57.1%	50.0%	100.0%	33.3%	37.8%	41.9%
65+	18.0%	18.2%	4.2%	12.9%	42.9%	0.0%	0.0%	0.0%	11.1%	9.3%
85+	2.3%	2.3%	4.2%	0.0%	0.0%	0.0%	0.0%	0.0%	0.0%	0.0%
D. Racial and Ethnic Composition of Each Age Group										
2000										
0-19	100.0%	96.9%	1.2%	1.1%	0.1%	0.1%	0.0%	0.0%	0.9%	0.8%
20-64	100.0%	98.7%	0.2%	0.7%	0.1%	0.1%	0.0%	0.0%	0.5%	0.3%
65+	100.0%	99.4%	0.2%	0.2%	0.0%	0.0%	0.0%	0.0%	0.2%	0.1%
85+	100.0%	98.9%	1.1%	0.0%	0.0%	0.0%	0.0%	0.0%	0.0%	0.0%
2010										
0-19	100.0%	96.1%	1.0%	1.7%	0.0%	0.2%	0.0%	0.1%	1.4%	1.3%
20-64	100.0%	98.5%	0.2%	0.8%	0.1%	0.1%	0.0%	0.0%	0.5%	0.5%
65+	100.0%	98.8%	0.1%	0.7%	0.3%	0.0%	0.0%	0.0%	0.5%	0.4%
85+	100.0%	99.3%	0.7%	0.0%	0.0%	0.0%	0.0%	0.0%	0.0%	0.0%
E. Population Growth										
2000-2010, Change										
0-19	-49	-61	-4	9	-2	2	0	2	7	7
20-64	201	192	-1	3	1	0	1	1	0	7
65+	229	221	-1	6	3	0	0	0	3	3
85+	46	46	0	0	0	0	0	0	0	0
Total	381	352	-6	18	2	2	1	3	10	17
2000-2010, Pct Change										
0-19	-2.8%	-3.7%	-19.0%	47.4%	-100.0%	200.0%	0.0%	0.0%	43.8%	50.0%
20-64	6.4%	6.2%	-14.3%	13.0%	33.3%	0.0%	0.0%	0.0%	0.0%	63.6%
65+	26.2%	25.5%	-50.0%	300.0%	0.0%	0.0%	0.0%	0.0%	150.0%	300.0%
85+	49.5%	50.0%	0.0%	0.0%	0.0%	0.0%	0.0%	0.0%	0.0%	0.0%
Total	6.6%	6.2%	-20.0%	40.9%	40.0%	50.0%	0.0%	0.0%	28.6%	65.4%

Source: Decennial Census 2010, 2000, American Community Survey 2008-2012

Prepared for the Pennsylvania State Library by The Pennsylvania State Data Center, 9/2014

Reference Data

Green Free Library - Bradford

	Total Population	White, Non- Hispanic	Black, Non- Hispanic	Other, Non- Hispanic	Detail for Other, Non-Hispanic					Hispanic or Latino
					AIAN	Asian	NHOPI	Some Other	Two or More	
								Race	Races	
F. Population by Library-Defined Age Groups, 2010										
0-5	454	432	3	13	0	2	0	2	9	6
6-10	428	410	3	10	0	1	0	0	9	5
11-13	247	237	4	2	0	0	0	0	2	4
14-18	479	466	5	3	0	0	0	0	3	5
19-32	846	829	4	5	1	1	0	0	3	8
33-45	1,021	1,009	1	7	0	0	0	0	7	4
46-64	1,547	1,523	3	14	3	2	1	1	7	7
65-84	963	951	0	8	3	0	0	0	5	4
85+	139	138	1	0	0	0	0	0	0	0
Total	6,124	5,995	24	62	7	6	1	3	45	43
G. Population by 5-Year Age Cohorts, 2010										
0-4	382	362	3	12	0	1	0	2	9	5
5-9	419	400	3	10	0	2	0	0	8	6
10-14	420	408	5	3	0	0	0	0	3	4
15-19	451	436	6	3	0	0	0	0	3	6
20-24	318	313	1	4	1	0	0	0	3	0
25-29	277	273	0	0	0	0	0	0	0	4
30-34	333	327	1	2	0	1	0	0	1	3
35-39	376	372	0	3	0	0	0	0	3	1
40-44	420	413	1	3	0	0	0	0	3	3
45-49	463	459	0	3	0	0	1	0	2	1
50-54	411	404	1	4	1	1	0	0	2	2
55-59	378	369	1	5	1	1	0	1	2	3
60-64	374	370	1	2	1	0	0	0	1	1
65-69	362	357	0	2	0	0	0	0	2	3
70-74	259	256	0	3	1	0	0	0	2	0
75-79	197	194	0	2	1	0	0	0	1	1
80-84	145	144	0	1	1	0	0	0	0	0
85-89	87	87	0	0	0	0	0	0	0	0
90-94	48	47	1	0	0	0	0	0	0	0
95-99	1	1	0	0	0	0	0	0	0	0
100+	3	3	0	0	0	0	0	0	0	0
Total	6,124	5,995	24	62	7	6	1	3	45	43

Source: Decennial Census 2010, 2000, American Community Survey 2008-2012
Prepared for the Pennsylvania State Library by The Pennsylvania State Data Center, 9/2014

Reference Data

Green Free Library - Bradford

H. Income Distribution, 2008-2012

Range (in thousands)	Households	Pct of Total
<\$10K	201	8.3%
\$10K to <\$25K	508	20.9%
\$25K to <\$50K	784	32.3%
\$50K to <\$75K	518	21.3%
\$75K to <\$100K	233	9.6%
\$100K to <\$150K	122	5.0%
\$150K+	63	2.6%

I. Household Type, 2010

Household Type	2000	2000pct	2010	2010pct
Total Households	2,213	100.0%	2,388	100.0%
Family Households	1,593	72.0%	1,682	70.4%
Husband-wife, no children w/children	540	24.4%	504	21.1%
Female head, no husband, w/ children	112	5.1%	125	5.2%
Male head, no wife, w/ children	67	3.0%	69	2.9%
Without children	874	39.5%	984	41.2%
Nonfamily households	620	28.0%	706	29.6%
Living alone	536	24.2%	590	24.7%
Other nonfamily	84	3.8%	116	4.9%

J. Household Type by Race and Ethnicity, 2008-2012

Household Type	White, NH	Black, NH	Other, NH	Hispanic
Total Households	2,357	2	21	11
Husband wife family	56.4%	50.0%	38.1%	63.6%
Family with male head, no wife	4.9%	0.0%	4.8%	0.0%
family with female head, no husband	9.2%	0.0%	14.3%	27.3%
Living alone	24.6%	50.0%	38.1%	9.1%
Other nonfamily	4.9%	0.0%	4.8%	0.0%

K. Poverty, 2008-2012

Families	Poverty	PA
All families	10.7%	9.1%
Families w/ related children	15.1%	15.3%
Female householder, no husband present	38.3%	28.8%
Female householder, no husband present, w/ related children	44.0%	39.2%
All people	15.1%	13.1%
Under 18 years	19.1%	18.4%
18 to 64 years	14.8%	12.3%
65 years and over	10.7%	8.4%

L. Educational Attainment by Race and Ethnicity, 2008-2012

Education Level	White, NH	Black	Other	Hispanic	Total
Population 25 years and over	4,189	3	4	16	4,212
Less than high school	14.5%	100.0%	0%	0.0%	14.5%
High school graduate (includes equivalency)	51.0%	0.0%	50%	81.3%	51.1%
Some college or associates degree	22.8%	0.0%	0%	0.0%	22.7%
Bachelors degree or higher	11.7%	0.0%	50%	18.8%	11.7%

M. Occupation, 2008-2012

Occupation	Estimate	Percent
Civilian population age 16 years and over	2,596	100.0%
Management, professional, and related occupations	669	25.8%
Service occupations	300	11.6%
Sales and office occupations	492	19.0%
Farming, fishing, and forestry occupations	75	2.9%
Construction, extraction, maintenance, and repair occupations	392	15.1%
Production, transportation, and material moving occupations	668	25.7%

N. Class of Worker, 2008-2012

Occupation	Estimate	Percent
Civilian population age 16 years and over	2,596	100.0%
Private, for profit, wage and salary employee	1,762	67.9%
Private, not for profit, wage and salary employee	156	6.0%
Private, for profit, wage and salary self-employed in own business	74	2.9%
Government workers	301	11.6%
Self-employed in own not incorporated business	299	11.5%
Unpaid family workers in family business	4	0.2%