

Demographic Profile Hamlin Memorial Library

Population Growth: The total population of the Hamlin Memorial Library service area decreased by -3.2 percent over the past decade to 5,400; this decline rate was lower than the statewide rate of 3.4 percent.

Age and Sex: In 2010, the Hamlin Memorial Library service area had a total population of 5,400 - 2,702 males (50.0 percent) and 2,698 females (50.0 percent). The age structure of the population in 2010 was as follows: 24.4 percent of the population was under 20 years old, 56.1 percent was 20 to 64 years old and 19.5 percent was 65 years or older.

Race and Ethnicity: For people reporting one race alone, not of Hispanic ethnicity, 97.9 percent were White; .4 percent were Black or African American; .9 percent were Other Race Alone.¹ A total of 48 or .9 percent of the population were Hispanic.²

Households: In 2010, there were 2,115 households in the Hamlin Memorial Library service area. The average household size was 2.43 people. Families made up 68.8 percent of the households. This figure includes both families with (26.8 percent) and without (42.0 percent) children. Of families with children less than 18 years old, 17.0 percent were married-couple families, 6.1 percent were female householder families with no husband present, and the remaining (3.7 percent) were male-headed households with no wife present.

Education: The educational attainment of the population 25 years and over was lower in the Hamlin Memorial Library service area than in Pennsylvania. During the period 2008-2012, 13.7 percent of residents had earned a Bachelor's degree or higher, compared with 27.0 percent statewide. A total of 375 or 9.1 percent had not completed high school, compared with 11.7 percent for the commonwealth as a whole.

Income and Poverty: Households with incomes of \$25,000 to \$49,999 (28.9 percent) made up the largest percent of households in the Hamlin Memorial Library service area in 2008-2012. For comparison, 24.4 percent of commonwealth households were in this range during the period.

In 2008-2012, the overall poverty rate for the Hamlin Memorial Library service area was lower than Pennsylvania (13.0 percent compared to 13.1 percent). The poverty rate for the population under 18 years of age was 22.0 percent, compared with 11.5 percent of people 18 to 64 years and 8.5 percent for those aged 65 years and over. A total of 158 or 10.2 percent of all families had incomes below poverty level. In 2008-2012, 19.2 percent of families with related children and 60.3 percent of families with a female householder and no husband with related children present had incomes below the poverty level.

Class of Worker and Occupation: In 2008-2012, 74.0 percent of the workforce was private wage and salary workers; 14.9 percent were federal, state, or local government workers; and 11.1 percent were self-employed in their own (not incorporated) business.

The top occupation group for the civilian employed population 16 years and over in the Hamlin Memorial Library service area in 2008-2012 was Management, business, science, and arts (31.1 percent).

¹ Other race includes those who identified themselves as American Indian/Alaska Native, Asian, Native Hawaiian/Other Pacific Islander, Some Other Race and Two or More Races on the 2010 Census form.

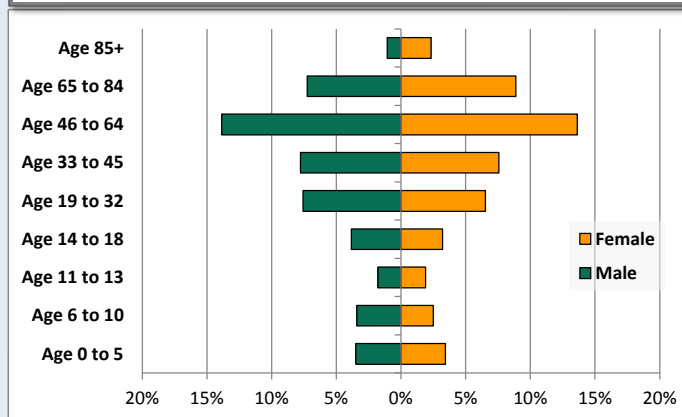
² People of Hispanic origin may be of any race.

Demographic Profile

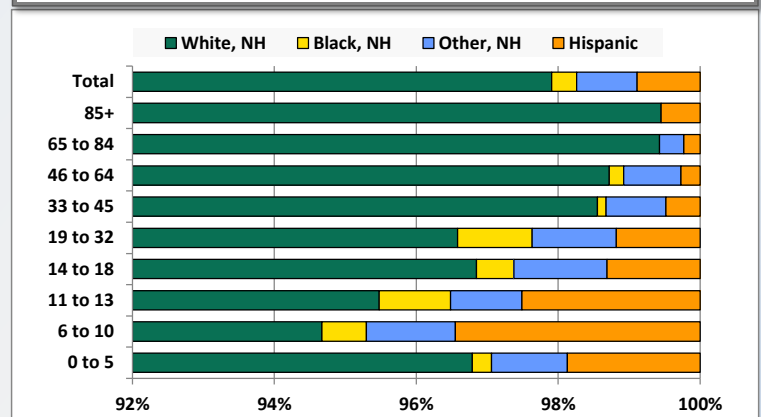
Hamlin Memorial Library

Key Indicators		
	2000	2010
Population Growth		
Total Population	5,580	5,400
10-Year Growth	N/A	-3.2%
Diversity		
White Alone, Non-Hispanic	98.3%	97.9%
Black Alone, Non-Hispanic	0.3%	0.4%
Other Race Alone, Non-Hispanic	0.8%	0.9%
Percent Hispanic	0.7%	0.9%
Aging		
Percent 65 Years and Over	18.1%	19.5%
Households		
Percent Married Couple with Own Children	25.2%	17.0%
Percent Living Alone	23.6%	24.8%

Population by Library-Defined Age Group, 2010



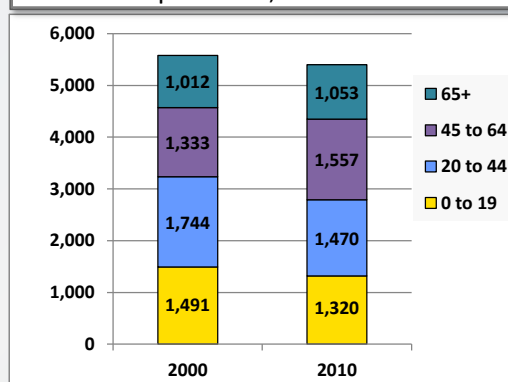
Race/Ethnicity by Library-Defined Age Group, 2010



Population Growth by Library-Defined Age Group, 2000 to 2010

Age Group	2010	Change	
		Numeric	Percent
Total	5,400	-180	-3.2%
85+	182	3	1.7%
65 to 84	871	38	4.6%
46 to 64	1,484	239	19.2%
33 to 45	829	-280	-25.2%
19 to 32	761	-11	-1.4%
14 to 18	381	-38	-9.1%
11 to 13	199	-62	-23.8%
6 to 10	319	-76	-19.2%
0 to 5	374	7	1.9%

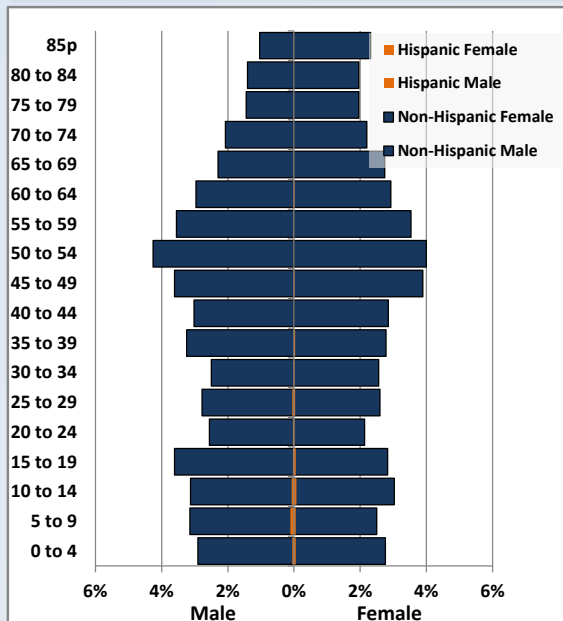
Population Total, 2000 and 2010



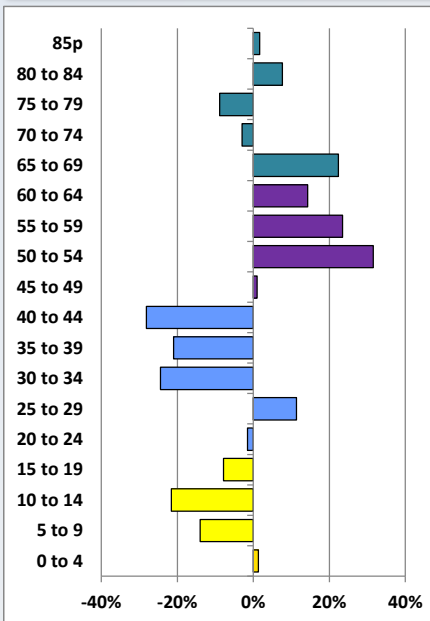
Demographic Profile

Hamlin Memorial Library

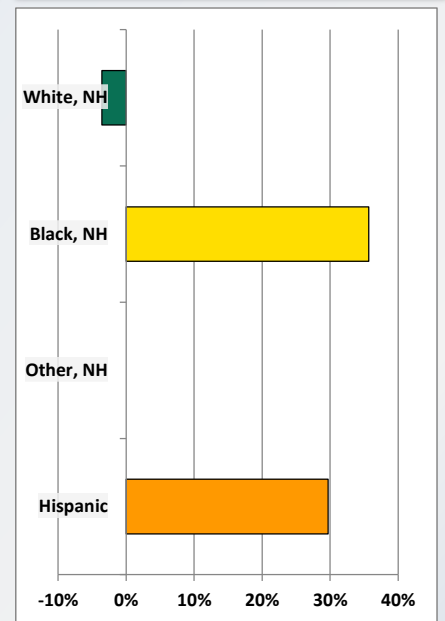
Population by 5-Year Age Cohorts



Pop Change by Age, 2000 to 2010

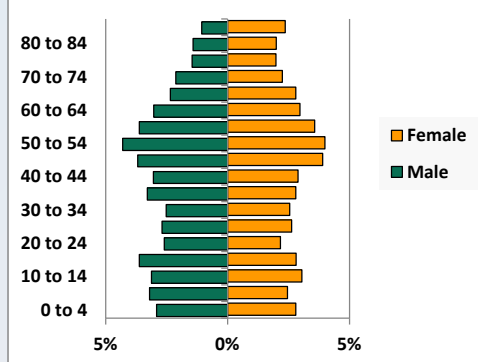


Pop Change by Race/Ethnicity, 2000 to 2010

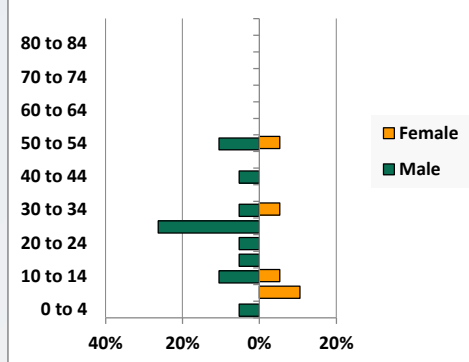


Population by Age, Race and Ethnicity 2010

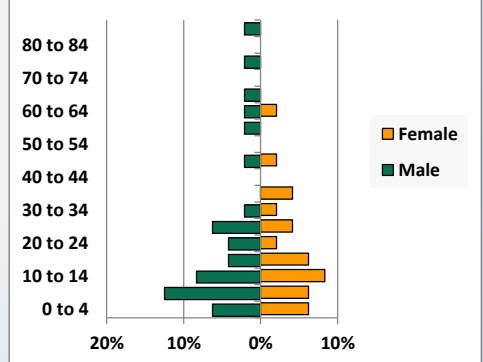
White, Not Hispanic



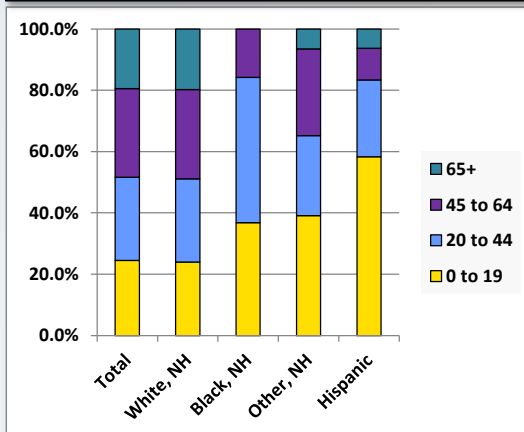
Black, Non-Hispanic



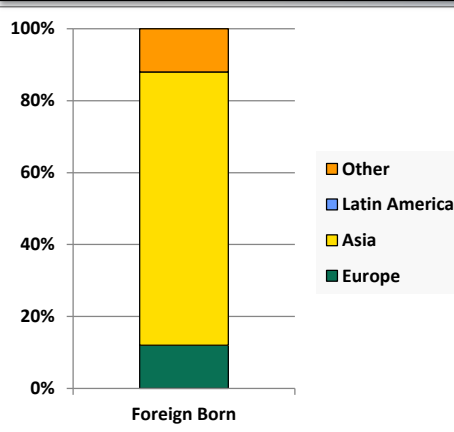
Hispanic



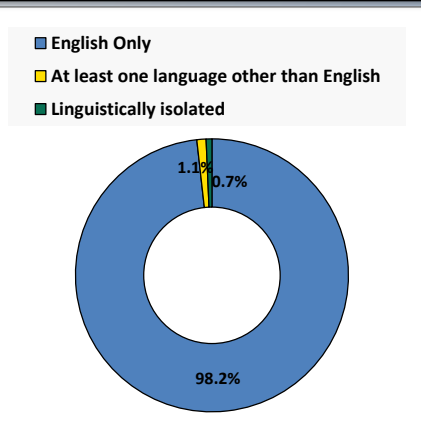
Age by Race and Ethnicity, 2010



Foreign Born, 2010



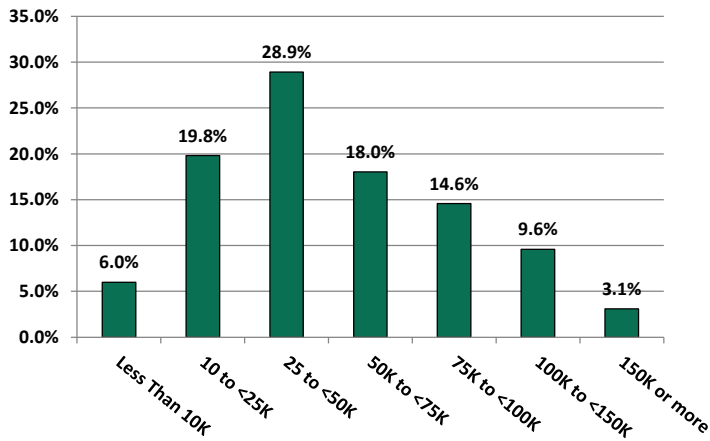
Household Language, 2010



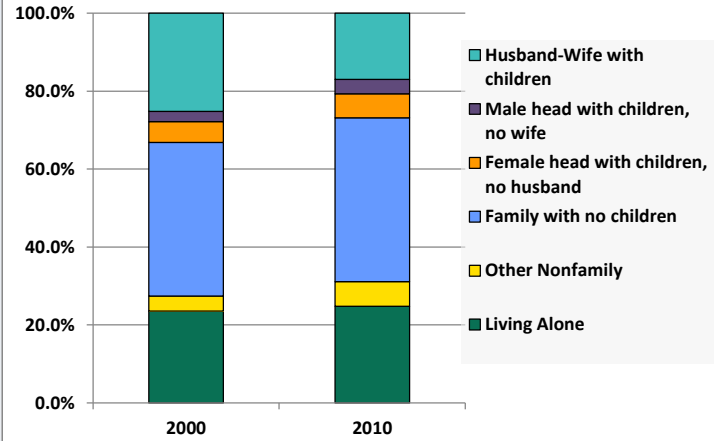
Demographic Profile

Hamlin Memorial Library

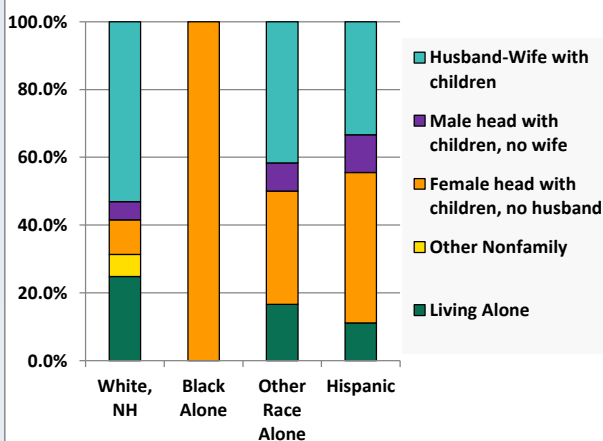
Household Income Distribution, 2008-2012



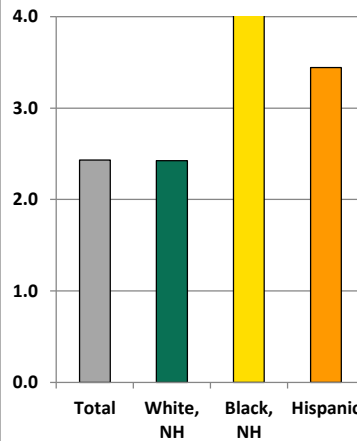
Household Type, 2000 and 2010



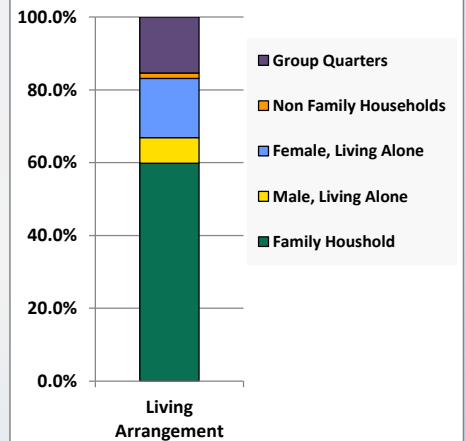
Household Type by Race/Ethnicity, 2010



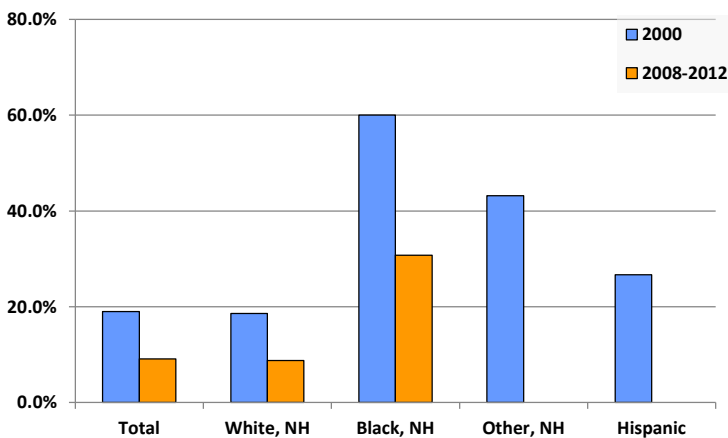
Average Household Size, 2010



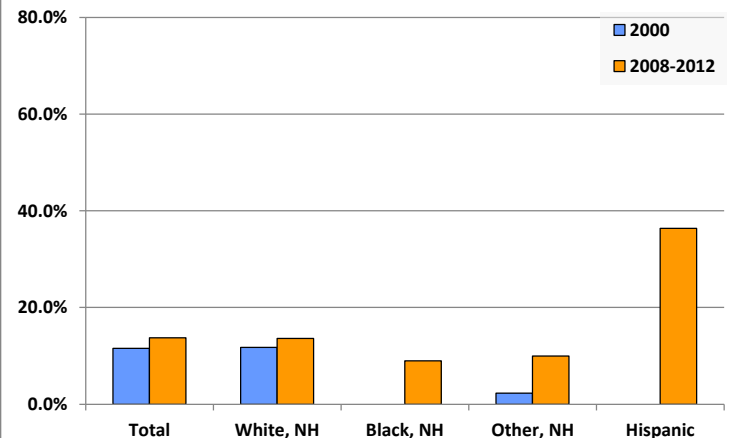
Living Arrangements 65+, 2008-2012



Percent of Adults that Did Not Complete High School



Percent of Adults Who Attained a Bachelor's Degree or Higher



Reference Data

Hamlin Memorial Library

	Total Population	White, Non- Hispanic	Black, Non- Hispanic	Other, Non- Hispanic	Detail for Other, Non-Hispanic					Hispanic or Latino
					AIAN	Asian	NHOPI	Some Other Race	Two or More Races	
A. Total Population										
2000 Total	5,580	5,483	14	46	5	8	1	0	32	37
2000 pct of Total	100.0%	98.3%	0.3%	0.8%	0.1%	0.1%	0.0%	0.0%	0.6%	0.7%
2010 Total	5,400	5,287	19	46	4	14	0	1	27	48
2010 pct of Total	100.0%	97.9%	0.4%	0.9%	0.1%	0.3%	0.0%	0.0%	0.5%	0.9%
B. Population by Major Age Groups by Race and Ethnicity										
2000										
0-19	1,491	1,450	4	17	1	3	0	0	13	20
20-64	3,077	3,028	9	26	4	5	1	0	16	14
65+	1,012	1,005	1	3	0	0	0	0	3	3
85+	179	177	1	0	0	0	0	0	0	1
2010										
0-19	1,320	1,267	7	18	0	5	0	0	13	28
20-64	3,027	2,973	12	25	3	9	0	1	12	17
65+	1,053	1,047	0	3	1	0	0	0	2	3
85+	182	181	0	0	0	0	0	0	0	1
C. Age Mix for Each Racial and Ethnic Group										
2000										
0-19	26.7%	26.4%	28.6%	37.0%	20.0%	37.5%	0.0%	0.0%	40.6%	54.1%
20-64	55.1%	55.2%	64.3%	56.5%	80.0%	62.5%	100.0%	0.0%	50.0%	37.8%
65+	18.1%	18.3%	7.1%	6.5%	0.0%	0.0%	0.0%	0.0%	9.4%	8.1%
85+	3.2%	3.2%	7.1%	0.0%	0.0%	0.0%	0.0%	0.0%	0.0%	2.7%
2010										
0-19	24.4%	24.0%	36.8%	39.1%	0.0%	35.7%	0.0%	0.0%	48.1%	58.3%
20-64	56.1%	56.2%	63.2%	54.3%	75.0%	64.3%	0.0%	100.0%	44.4%	35.4%
65+	19.5%	19.8%	0.0%	6.5%	25.0%	0.0%	0.0%	0.0%	7.4%	6.3%
85+	3.4%	3.4%	0.0%	0.0%	0.0%	0.0%	0.0%	0.0%	0.0%	2.1%
D. Racial and Ethnic Composition of Each Age Group										
2000										
0-19	100.0%	97.3%	0.3%	1.1%	0.1%	0.2%	0.0%	0.0%	0.9%	1.3%
20-64	100.0%	98.4%	0.3%	0.8%	0.1%	0.2%	0.0%	0.0%	0.5%	0.5%
65+	100.0%	99.3%	0.1%	0.3%	0.0%	0.0%	0.0%	0.0%	0.3%	0.3%
85+	100.0%	98.9%	0.6%	0.0%	0.0%	0.0%	0.0%	0.0%	0.0%	0.6%
2010										
0-19	100.0%	96.0%	0.5%	1.4%	0.0%	0.4%	0.0%	0.0%	1.0%	2.1%
20-64	100.0%	98.2%	0.4%	0.8%	0.1%	0.3%	0.0%	0.0%	0.4%	0.6%
65+	100.0%	99.4%	0.0%	0.3%	0.1%	0.0%	0.0%	0.0%	0.2%	0.3%
85+	100.0%	99.5%	0.0%	0.0%	0.0%	0.0%	0.0%	0.0%	0.0%	0.5%
E. Population Growth										
2000-2010, Change										
0-19	-171	-183	3	1	-1	2	0	0	0	8
20-64	-50	-55	3	-1	-1	4	-1	1	-4	3
65+	41	42	-1	0	1	0	0	0	-1	0
85+	3	4	-1	0	0	0	0	0	0	0
Total	-180	-196	5	0	-1	6	-1	1	-5	11
2000-2010, Pct Change										
0-19	-11.5%	-12.6%	75.0%	5.9%	-100.0%	66.7%	0.0%	0.0%	0.0%	40.0%
20-64	-1.6%	-1.8%	33.3%	-3.8%	-25.0%	80.0%	-100.0%	0.0%	-25.0%	21.4%
65+	4.1%	4.2%	-100.0%	0.0%	0.0%	0.0%	0.0%	0.0%	-33.3%	0.0%
85+	1.7%	2.3%	-100.0%	0.0%	0.0%	0.0%	0.0%	0.0%	0.0%	0.0%
Total	-3.2%	-3.6%	35.7%	0.0%	-20.0%	75.0%	-100.0%	0.0%	-15.6%	29.7%

Source: Decennial Census 2010, 2000, American Community Survey 2008-2012

Prepared for the Pennsylvania State Library by The Pennsylvania State Data Center, 9/2014

Reference Data

Hamlin Memorial Library

					Detail for Other, Non-Hispanic					Hispanic or Latino
	Total Population	White, Non-Hispanic	Black, Non-Hispanic	Other, Non-Hispanic	AIAN	Asian	NHOPI	Some Other Race	Two or More Races	
F. Population by Library-Defined Age Groups, 2010										
0-5	374	362	1	4	0	2	0	0	2	7
6-10	319	302	2	4	0	1	0	0	3	11
11-13	199	190	2	2	0	0	0	0	2	5
14-18	381	369	2	5	0	1	0	0	4	5
19-32	761	735	8	9	2	2	0	0	5	9
33-45	829	817	1	7	0	5	0	0	2	4
46-64	1,484	1,465	3	12	1	3	0	1	7	4
65-84	871	866	0	3	1	0	0	0	2	2
85+	182	181	0	0	0	0	0	0	0	1
Total	5,400	5,287	19	46	4	14	0	1	27	48
G. Population by 5-Year Age Cohorts, 2010										
0-4	312	302	1	3	0	1	0	0	2	6
5-9	314	299	2	4	0	2	0	0	2	9
10-14	341	326	3	4	0	0	0	0	4	8
15-19	353	340	1	7	0	2	0	0	5	5
20-24	256	252	1	0	0	0	0	0	0	3
25-29	295	281	5	4	1	1	0	0	2	5
30-34	275	268	2	3	1	1	0	0	1	2
35-39	327	322	0	3	0	2	0	0	1	2
40-44	317	314	1	2	0	1	0	0	1	0
45-49	407	401	0	4	0	2	0	1	1	2
50-54	446	438	3	5	1	0	0	0	4	0
55-59	384	380	0	3	0	1	0	0	2	1
60-64	320	317	0	1	0	1	0	0	0	2
65-69	273	272	0	0	0	0	0	0	0	1
70-74	231	231	0	0	0	0	0	0	0	0
75-79	185	182	0	2	0	0	0	0	2	1
80-84	182	181	0	1	1	0	0	0	0	0
85-89	102	102	0	0	0	0	0	0	0	0
90-94	67	66	0	0	0	0	0	0	0	1
95-99	10	10	0	0	0	0	0	0	0	0
100+	3	3	0	0	0	0	0	0	0	0
Total	5,400	5,287	19	46	4	14	0	1	27	48

Source: Decennial Census 2010, 2000, American Community Survey 2008-2012
 Prepared for the Pennsylvania State Library by The Pennsylvania State Data Center, 9/2014

H. Income Distribution, 2008-2012

Range (in thousands)	Households	Pct of Total
<\$10K	132	6.0%
\$10K to <\$25K	435	19.8%
\$25K to <\$50K	635	28.9%
\$50K to <\$75K	396	18.0%
\$75K to <\$100K	320	14.6%
\$100K to <\$150K	211	9.6%
\$150K+	68	3.1%

I. Household Type, 2010

Household Type	2000	2000pct	2010	2010pct
Total Households	2,121	100.0%	2,115	100.0%
Family Households	1,539	72.6%	1,456	68.8%
Husband-wife, no children w/children	534	25.2%	360	17.0%
Female head, no husband, w/ children	112	5.3%	129	6.1%
Male head, no wife, w/ children	57	2.7%	78	3.7%
Without children	836	39.4%	889	42.0%
Nonfamily households	582	27.4%	659	31.2%
Living alone	500	23.6%	524	24.8%
Other nonfamily	82	3.9%	135	6.4%

J. Household Type by Race and Ethnicity, 2008-2012

Household Type	White, NH	Black, NH	Other, NH	Hispanic
Total Households	2,095	1	12	9
Husband wife family	53.0%	0.0%	41.7%	33.3%
Family with male head, no wife	5.4%	0.0%	8.3%	11.1%
family with female head, no husband	10.3%	100.0%	33.3%	44.4%
Living alone	24.9%	0.0%	16.7%	11.1%
Other nonfamily	6.4%	0.0%	0.0%	0.0%

K. Poverty, 2008-2012

Families	Poverty	PA
All families	10.2%	9.1%
Families w/ related children	19.2%	15.3%
Female householder, no husband present	39.5%	28.8%
Female householder, no husband present, w/ related children	60.3%	39.2%
All people	13.0%	13.1%
Under 18 years	22.0%	18.4%
18 to 64 years	11.5%	12.3%
65 years and over	8.5%	8.4%

L. Educational Attainment by Race and Ethnicity, 2008-2012

Education Level	White, NH	Black	Other	Hispanic	Total
Population 25 years and over	4,005	78	30	33	4,127
Less than high school	8.8%	30.8%	0%	0.0%	9.1%
High school graduate (includes equivalency)	51.1%	26.9%	13%	0.0%	50.2%
Some college or associates degree	26.5%	33.3%	77%	63.6%	27.0%
Bachelors degree or higher	13.6%	9.0%	10%	36.4%	13.7%

M. Occupation, 2008-2012

Occupation	Estimate	Percent
Civilian population age 16 years and over	2,454	100.0%
Management, professional, and related occupations	763	31.1%
Service occupations	453	18.5%
Sales and office occupations	446	18.2%
Farming, fishing, and forestry occupations	40	1.6%
Construction, extraction, maintenance, and repair occupations	229	9.3%
Production, transportation, and material moving occupations	523	21.3%

N. Class of Worker, 2008-2012

Occupation	Estimate	Percent
Civilian population age 16 years and over	2,454	100.0%
Private, for profit, wage and salary employee	1,500	61.1%
Private, not for profit, wage and salary employee	270	11.0%
Private, for profit, wage and salary self-employed in own business	45	1.8%
Government workers	366	14.9%
Self-employed in own not incorporated business	273	11.1%
Unpaid family workers in family business	0	0.0%