

## Demographic Profile Hastings Public Library

**Population Growth:** The total population of the Hastings Public Library service area decreased by -8.6 percent over the past decade to 1,278; this decline rate was lower than the statewide rate of 3.4 percent.

**Age and Sex:** In 2010, the Hastings Public Library service area had a total population of 1,278 - 592 males (46.3 percent) and 686 females (53.7 percent). The age structure of the population in 2010 was as follows: 25.9 percent of the population was under 20 years old, 55.5 percent was 20 to 64 years old and 18.6 percent was 65 years or older.

**Race and Ethnicity:** For people reporting one race alone, not of Hispanic ethnicity, 98.5 percent were White; .2 percent were Black or African American; .8 percent were Other Race Alone.<sup>1</sup> A total of 7 or .5 percent of the population were Hispanic.<sup>2</sup>

**Households:** In 2010, there were 529 households in the Hastings Public Library service area. The average household size was 2.41 people. Families made up 71.1 percent of the households. This figure includes both families with (29.1 percent) and without (42.0 percent) children. Of families with children less than 18 years old, 16.1 percent were married-couple families, 10.0 percent were female householder families with no husband present, and the remaining (3.0 percent) were male-headed households with no wife present.

**Education:** The educational attainment of the population 25 years and over was lower in the Hastings Public Library service area than in Pennsylvania. During the period 2008-2012, 15.0 percent of residents had earned a Bachelor's degree or higher, compared with 27.0 percent statewide. A total of 79 or 9.1 percent had not completed high school, compared with 11.7 percent for the commonwealth as a whole.

**Income and Poverty:** Households with incomes of less than \$25,000 (34.7 percent) made up the largest percent of households in the Hastings Public Library service area in 2008-2012. For comparison, 23.6 percent of commonwealth households were in this range during the period.

In 2008-2012, the overall poverty rate for the Hastings Public Library service area was higher than Pennsylvania (15.7 percent compared to 13.1 percent). The poverty rate for the population under 18 years of age was 29.2 percent, compared with 15.3 percent of people 18 to 64 years and 4.0 percent for those aged 65 years and over. A total of 39 or 10.7 percent of all families had incomes below poverty level. In 2008-2012, 25.9 percent of families with related children and 63.2 percent of families with a female householder and no husband with related children present had incomes below the poverty level.

**Class of Worker and Occupation:** In 2008-2012, 83.0 percent of the workforce was private wage and salary workers; 11.3 percent were federal, state, or local government workers; and 5.7 percent were self-employed in their own (not incorporated) business.

The top occupation group for the civilian employed population 16 years and over in the Hastings Public Library service area in 2008-2012 was Management, business, science, and arts (30.7 percent).

---

<sup>1</sup> Other race includes those who identified themselves as American Indian/Alaska Native, Asian, Native Hawaiian/Other Pacific Islander, Some Other Race and Two or More Races on the 2010 Census form.

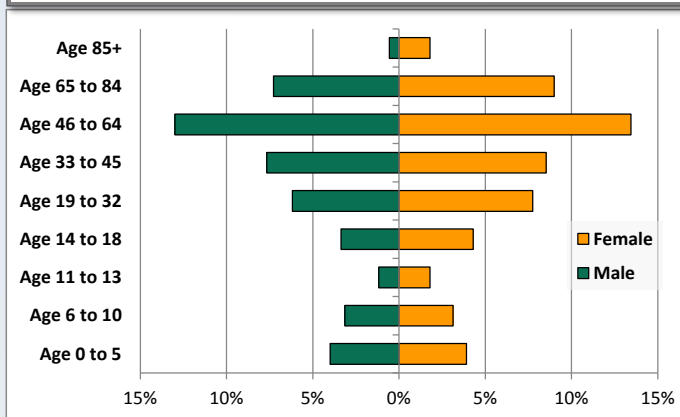
<sup>2</sup> People of Hispanic origin may be of any race.

# Demographic Profile

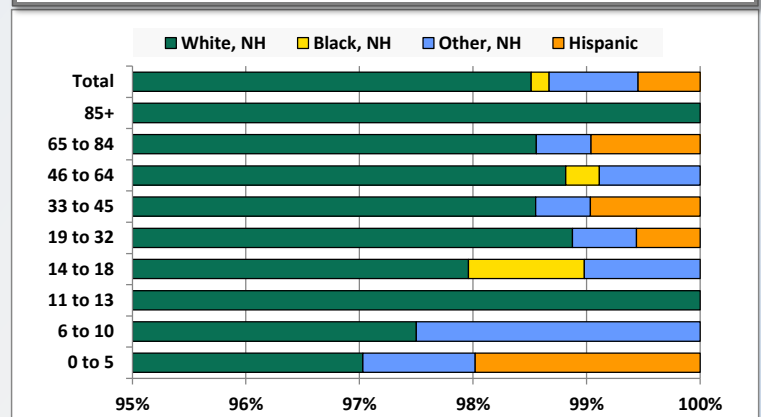
Hastings Public Library

Key Indicators		
	2000	2010
<b>Population Growth</b>		
Total Population	1,398	1,278
10-Year Growth	N/A	-8.6%
<b>Diversity</b>		
White Alone, Non-Hispanic	99.2%	98.5%
Black Alone, Non-Hispanic	0.0%	0.2%
Other Race Alone, Non-Hispanic	0.1%	0.8%
Percent Hispanic	0.6%	0.5%
<b>Aging</b>		
Percent 65 Years and Over	25.1%	18.6%
<b>Households</b>		
Percent Married Couple with Own Children	19.7%	16.1%
Percent Living Alone	29.8%	25.3%

Population by Library-Defined Age Group, 2010



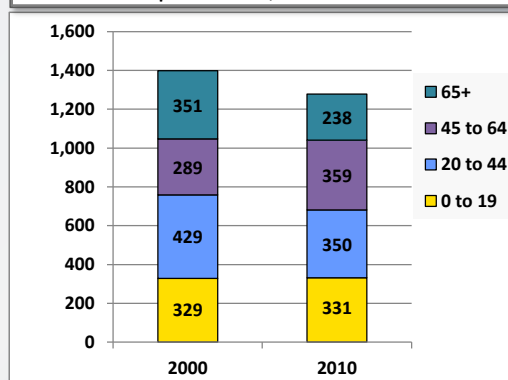
Race/Ethnicity by Library-Defined Age Group, 2010



Population Growth by Library-Defined Age Group, 2000 to 2010

Age Group	2010	Change	
		Numeric	Percent
Total	1,278	-120	-8.6%
85+	30	-25	-45.5%
65 to 84	208	-88	-29.7%
46 to 64	338	68	25.2%
33 to 45	207	-28	-11.9%
19 to 32	178	-53	-22.9%
14 to 18	98	9	10.1%
11 to 13	38	-5	-11.6%
6 to 10	80	-5	-5.9%
0 to 5	101	7	7.4%

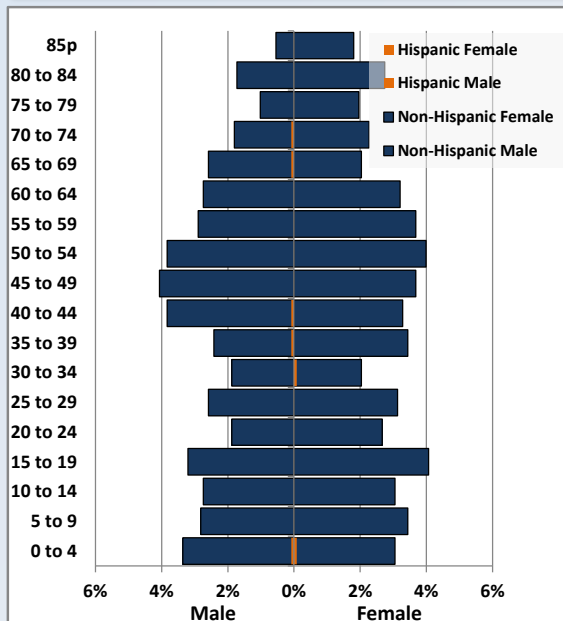
Population Total, 2000 and 2010



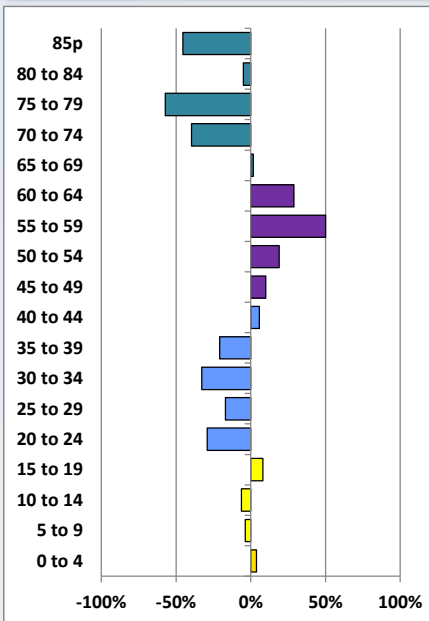
# Demographic Profile

Hastings Public Library

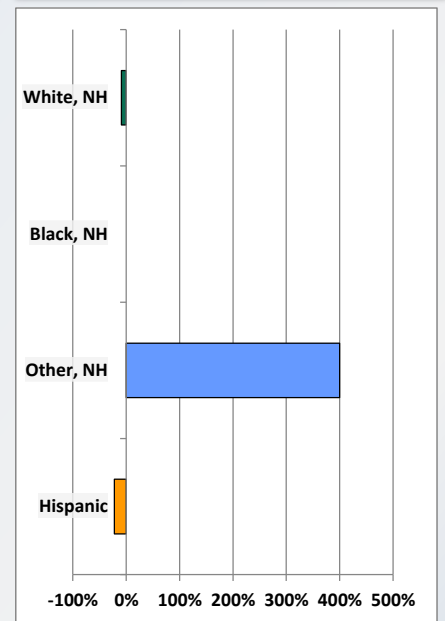
Population by 5-Year Age Cohorts



Pop Change by Age, 2000 to 2010

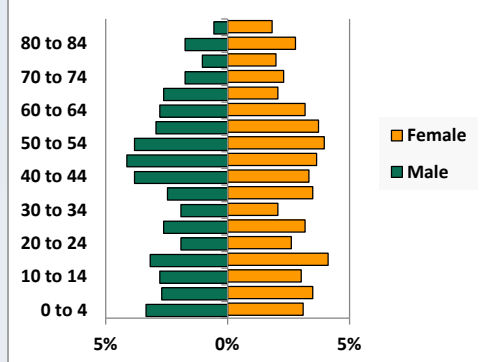


Pop Change by Race/Ethnicity, 2000 to 2010

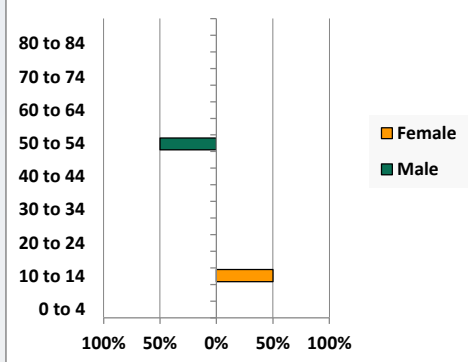


Population by Age, Race and Ethnicity 2010

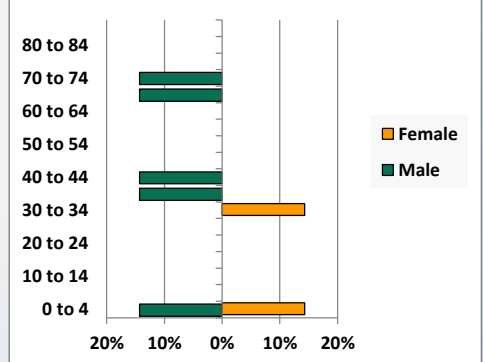
White, Not Hispanic



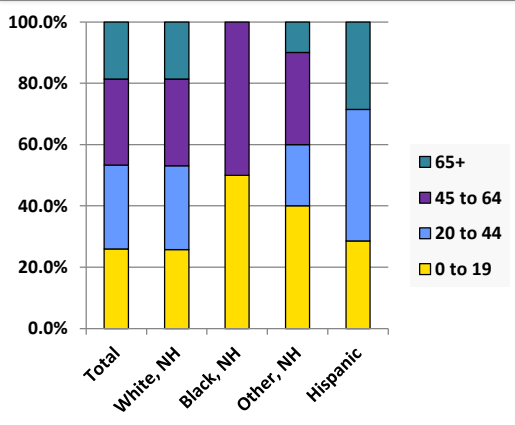
Black, Non-Hispanic



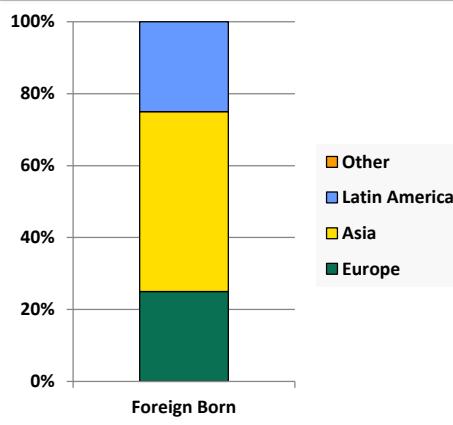
Hispanic



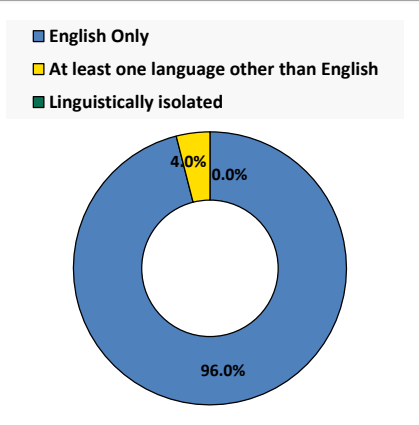
Age by Race and Ethnicity, 2010



Foreign Born, 2010



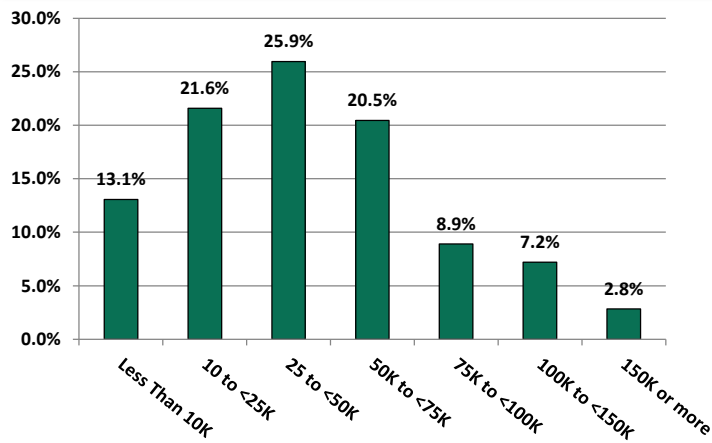
Household Language, 2010



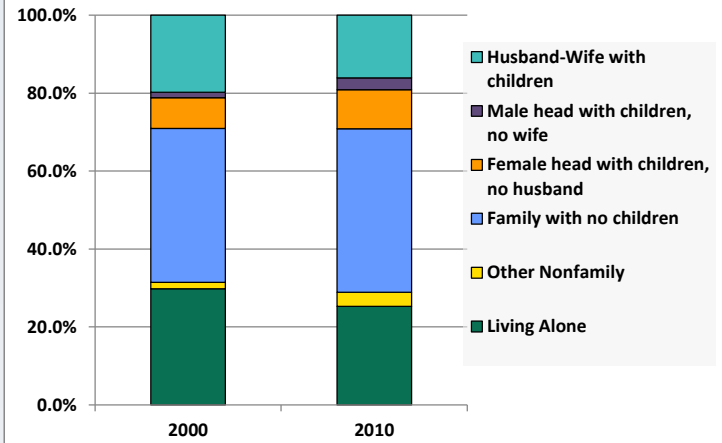
# Demographic Profile

Hastings Public Library

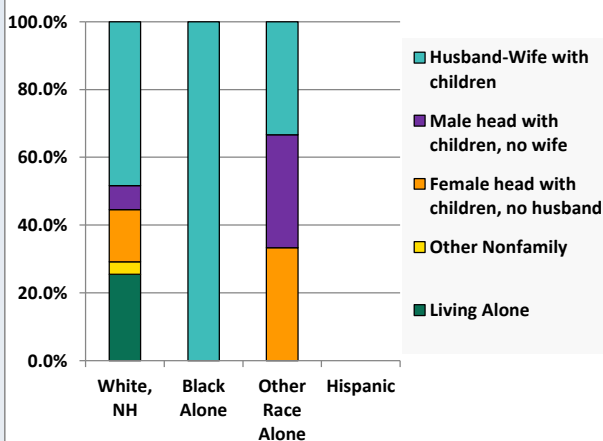
Household Income Distribution, 2008-2012



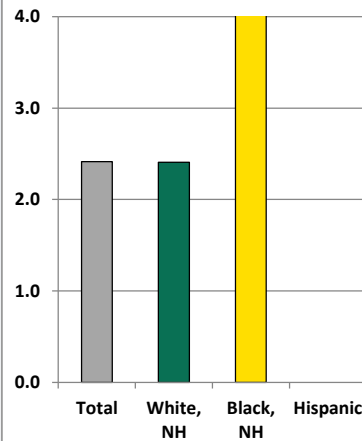
Household Type, 2000 and 2010



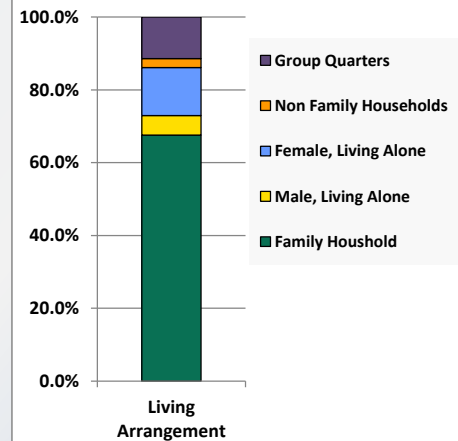
Household Type by Race/Ethnicity, 2010



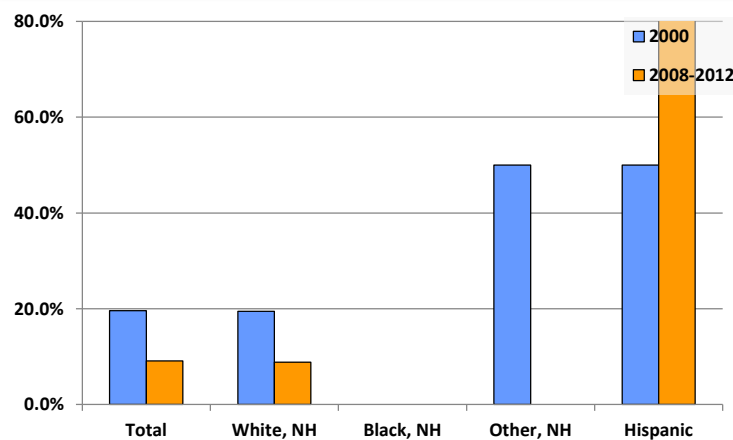
Average Household Size, 2010



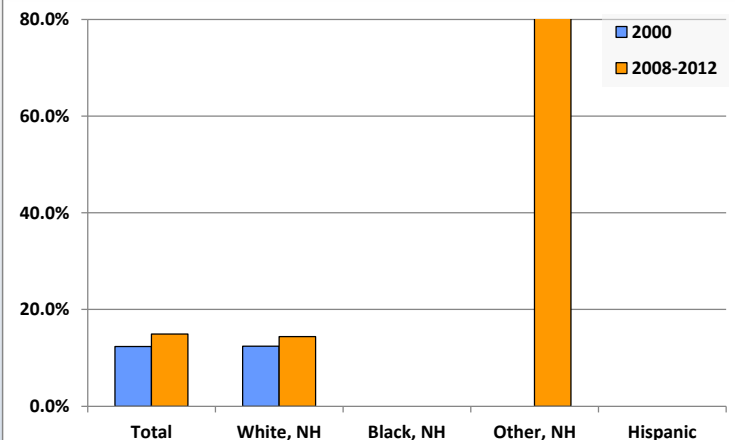
Living Arrangements 65+, 2008-2012



Percent of Adults that Did Not Complete High School



Percent of Adults Who Attained a Bachelor's Degree or Higher



# Reference Data

## Hastings Public Library

					Detail for Other, Non-Hispanic					
	Total Population	White, Non- Hispanic	Black, Non- Hispanic	Other, Non- Hispanic	Some Other Two or More Hispanic or					
					AIAN	Asian	NHOPI	Race	Races	Latino
A. Total Population										
2000 Total	1,398	1,387	0	2	0	2	0	0	0	9
2000 pct of Total	100.0%	99.2%	0.0%	0.1%	0.0%	0.1%	0.0%	0.0%	0.0%	0.6%
2010 Total	1,278	1,259	2	10	1	2	0	0	7	7
2010 pct of Total	100.0%	98.5%	0.2%	0.8%	0.1%	0.2%	0.0%	0.0%	0.5%	0.5%
B. Population by Major Age Groups by Race and Ethnicity										
2000										
0-19	329	324	0	0	0	0	0	0	0	5
20-64	718	712	0	2	0	2	0	0	0	4
65+	351	351	0	0	0	0	0	0	0	0
85+	55	55	0	0	0	0	0	0	0	0
2010										
0-19	331	324	1	4	0	0	0	0	4	2
20-64	709	700	1	5	1	1	0	0	3	3
65+	238	235	0	1	0	1	0	0	0	2
85+	30	30	0	0	0	0	0	0	0	0
C. Age Mix for Each Racial and Ethnic Group										
2000										
0-19	23.5%	23.4%	0.0%	0.0%	0.0%	0.0%	0.0%	0.0%	0.0%	55.6%
20-64	51.4%	51.3%	0.0%	100.0%	0.0%	100.0%	0.0%	0.0%	0.0%	44.4%
65+	25.1%	25.3%	0.0%	0.0%	0.0%	0.0%	0.0%	0.0%	0.0%	0.0%
85+	3.9%	4.0%	0.0%	0.0%	0.0%	0.0%	0.0%	0.0%	0.0%	0.0%
2010										
0-19	25.9%	25.7%	50.0%	40.0%	0.0%	0.0%	0.0%	0.0%	57.1%	28.6%
20-64	55.5%	55.6%	50.0%	50.0%	100.0%	50.0%	0.0%	0.0%	42.9%	42.9%
65+	18.6%	18.7%	0.0%	10.0%	0.0%	50.0%	0.0%	0.0%	0.0%	28.6%
85+	2.3%	2.4%	0.0%	0.0%	0.0%	0.0%	0.0%	0.0%	0.0%	0.0%
D. Racial and Ethnic Composition of Each Age Group										
2000										
0-19	100.0%	98.5%	0.0%	0.0%	0.0%	0.0%	0.0%	0.0%	0.0%	1.5%
20-64	100.0%	99.2%	0.0%	0.3%	0.0%	0.3%	0.0%	0.0%	0.0%	0.6%
65+	100.0%	100.0%	0.0%	0.0%	0.0%	0.0%	0.0%	0.0%	0.0%	0.0%
85+	100.0%	100.0%	0.0%	0.0%	0.0%	0.0%	0.0%	0.0%	0.0%	0.0%
2010										
0-19	100.0%	97.9%	0.3%	1.2%	0.0%	0.0%	0.0%	0.0%	1.2%	0.6%
20-64	100.0%	98.7%	0.1%	0.7%	0.1%	0.1%	0.0%	0.0%	0.4%	0.4%
65+	100.0%	98.7%	0.0%	0.4%	0.0%	0.4%	0.0%	0.0%	0.0%	0.8%
85+	100.0%	100.0%	0.0%	0.0%	0.0%	0.0%	0.0%	0.0%	0.0%	0.0%
E. Population Growth										
2000-2010, Change										
0-19	2	0	1	4	0	0	0	0	4	-3
20-64	-9	-12	1	3	1	-1	0	0	3	-1
65+	-113	-116	0	1	0	1	0	0	0	2
85+	-25	-25	0	0	0	0	0	0	0	0
Total	-120	-128	2	8	1	0	0	0	7	-2
2000-2010, Pct Change										
0-19	0.6%	0.0%	0.0%	0.0%	0.0%	0.0%	0.0%	0.0%	0.0%	-60.0%
20-64	-1.3%	-1.7%	0.0%	150.0%	0.0%	-50.0%	0.0%	0.0%	0.0%	-25.0%
65+	-32.2%	-33.0%	0.0%	0.0%	0.0%	0.0%	0.0%	0.0%	0.0%	0.0%
85+	-45.5%	-45.5%	0.0%	0.0%	0.0%	0.0%	0.0%	0.0%	0.0%	0.0%
Total	-8.6%	-9.2%	0.0%	400.0%	0.0%	0.0%	0.0%	0.0%	0.0%	-22.2%

Source: Decennial Census 2010, 2000, American Community Survey 2008-2012

Prepared for the Pennsylvania State Library by The Pennsylvania State Data Center, 9/2014

# Reference Data

## Hastings Public Library

	Total Population	White, Non- Hispanic	Black, Non- Hispanic	Other, Non- Hispanic	Detail for Other, Non-Hispanic					Hispanic or Latino	
					AIAN	Asian	NHOPI	Some Other	Two or More		
								Race	Races		
F. Population by Library-Defined Age Groups, 2010											
0-5	101	98	0	1	0	0	0	0	1	2	
6-10	80	78	0	2	0	0	0	0	2	0	
11-13	38	38	0	0	0	0	0	0	0	0	
14-18	98	96	1	1	0	0	0	0	1	0	
19-32	178	176	0	1	0	0	0	0	1	1	
33-45	207	204	0	1	0	0	0	0	1	2	
46-64	338	334	1	3	1	1	0	0	1	0	
65-84	208	205	0	1	0	1	0	0	0	2	
85+	30	30	0	0	0	0	0	0	0	0	
Total	1,278	1,259	2	10	1	2	0	0	7	7	
G. Population by 5-Year Age Cohorts, 2010											
0-4	84	81	0	1	0	0	0	0	1	2	
5-9	80	78	0	2	0	0	0	0	2	0	
10-14	74	73	1	0	0	0	0	0	0	0	
15-19	93	92	0	1	0	0	0	0	1	0	
20-24	58	57	0	1	0	0	0	0	1	0	
25-29	73	73	0	0	0	0	0	0	0	0	
30-34	51	50	0	0	0	0	0	0	0	1	
35-39	76	75	0	0	0	0	0	0	0	1	
40-44	92	90	0	1	0	0	0	0	1	1	
45-49	99	98	0	1	0	0	0	0	1	0	
50-54	100	98	1	1	1	0	0	0	0	0	
55-59	84	84	0	0	0	0	0	0	0	0	
60-64	76	75	0	1	0	1	0	0	0	0	
65-69	60	59	0	0	0	0	0	0	0	1	
70-74	53	51	0	1	0	1	0	0	0	1	
75-79	38	38	0	0	0	0	0	0	0	0	
80-84	57	57	0	0	0	0	0	0	0	0	
85-89	23	23	0	0	0	0	0	0	0	0	
90-94	6	6	0	0	0	0	0	0	0	0	
95-99	1	1	0	0	0	0	0	0	0	0	
100+	0	0	0	0	0	0	0	0	0	0	
Total	1,278	1,259	2	10	1	2	0	0	7	7	

### H. Income Distribution, 2008-2012

Range (in thousands)	Households	Pct of Total
<\$10K	69	13.1%
\$10K to <\$25K	114	21.6%
\$25K to <\$50K	137	25.9%
\$50K to <\$75K	108	20.5%
\$75K to <\$100K	47	8.9%
\$100K to <\$150K	38	7.2%
\$150K+	15	2.8%

### I. Household Type, 2010

Household Type	2000	2000pct	2010	2010pct
Total Households	557	100.0%	529	100.0%
Family Households	382	68.6%	376	71.1%
Husband-wife, no children w/children	110	19.7%	85	16.1%
Female head, no husband, w/ children	44	7.9%	53	10.0%
Male head, no wife, w/ children	8	1.4%	16	3.0%
Without children	220	39.5%	222	42.0%
Nonfamily households	175	31.4%	153	28.9%
Living alone	166	29.8%	134	25.3%
Other nonfamily	9	1.6%	19	3.6%

### J. Household Type by Race and Ethnicity, 2008-2012

Household Type	White, NH	Black, NH	Other, NH	Hispanic
Total Households	525	1	3	0
Husband wife family	48.4%	100.0%	33.3%	0.0%
Family with male head, no wife	7.0%	0.0%	33.3%	0.0%
family with female head, no husband	15.4%	0.0%	33.3%	0.0%
Living alone	25.5%	0.0%	0.0%	0.0%
Other nonfamily	3.6%	0.0%	0.0%	0.0%

### K. Poverty, 2008-2012

Families	Poverty	PA
All families	10.7%	9.1%
Families w/ related children	25.9%	15.3%
Female householder, no husband present	54.2%	28.8%
Female householder, no husband present, w/ related children	63.2%	39.2%
All people	15.7%	13.1%
Under 18 years	29.2%	18.4%
18 to 64 years	15.3%	12.3%
65 years and over	4.0%	8.4%

### L. Educational Attainment by Race and Ethnicity, 2008-2012

Education Level	White, NH	Black	Other	Hispanic	Total
Population 25 years and over	860	0	6	3	869
Less than high school	8.8%	0.0%	0%	100.0%	9.1%
High school graduate (includes equivalency)	55.5%	0.0%	0%	0.0%	54.9%
Some college or associates degree	21.3%	0.0%	0%	0.0%	21.1%
Bachelors degree or higher	14.4%	0.0%	100%	0.0%	15.0%

### M. Occupation, 2008-2012

Occupation	Estimate	Percent
Civilian population age 16 years and over	459	100.0%
Management, professional, and related occupations	141	30.7%
Service occupations	119	25.9%
Sales and office occupations	79	17.2%
Farming, fishing, and forestry occupations	3	0.7%
Construction, extraction, maintenance, and repair occupations	62	13.5%
Production, transportation, and material moving occupations	55	12.0%

### N. Class of Worker, 2008-2012

Occupation	Estimate	Percent
Civilian population age 16 years and over	459	100.0%
Private, for profit, wage and salary employee	342	74.5%
Private, not for profit, wage and salary employee	36	7.8%
Private, for profit, wage and salary self-employed in own business	3	0.7%
Government workers	52	11.3%
Self-employed in own not incorporated business	26	5.7%
Unpaid family workers in family business	0	0.0%