

Demographic Profile Huntingdon Valley Library

Population Growth: The total population of the Huntingdon Valley Library service area increased by 15.1 percent over the past decade to 12,982; this growth rate was higher than the statewide rate of 3.4 percent.

Age and Sex: In 2010, the Huntingdon Valley Library service area had a total population of 12,982 - 6,221 males (47.9 percent) and 6,761 females (52.1 percent). The age structure of the population in 2010 was as follows: 26.3 percent of the population was under 20 years old, 54.5 percent was 20 to 64 years old and 19.2 percent was 65 years or older.

Race and Ethnicity: For people reporting one race alone, not of Hispanic ethnicity, 87.1 percent were White; 1.0 percent were Black or African American; 10.1 percent were Other Race Alone.¹ A total of 234 or 1.8 percent of the population were Hispanic.²

Households: In 2010, there were 4,548 households in the Huntingdon Valley Library service area. The average household size was 2.82 people. Families made up 80.5 percent of the households. This figure includes both families with (34.9 percent) and without (45.6 percent) children. Of families with children less than 18 years old, 31.0 percent were married-couple families, 2.9 percent were female householder families with no husband present, and the remaining (1.1 percent) were male-headed households with no wife present.

Education: The educational attainment of the population 25 years and over was higher in the Huntingdon Valley Library service area than in Pennsylvania. During the period 2008-2012, 53.5 percent of residents had earned a Bachelor's degree or higher, compared with 27.0 percent statewide. A total of 566 or 6.4 percent had not completed high school, compared with 11.7 percent for the commonwealth as a whole.

Income and Poverty: Households with incomes of \$100,000 or More (50.3 percent) made up the largest percent of households in the Huntingdon Valley Library service area in 2008-2012. For comparison, 20.8 percent of commonwealth households were in this range during the period.

In 2008-2012, the overall poverty rate for the Huntingdon Valley Library service area was lower than Pennsylvania (5.4 percent compared to 13.1 percent). The poverty rate for the population under 18 years of age was 7.9 percent, compared with 4.4 percent of people 18 to 64 years and 5.3 percent for those aged 65 years and over. A total of 150 or 4.1 percent of all families had incomes below poverty level. In 2008-2012, 7.4 percent of families with related children and 40.4 percent of families with a female householder and no husband with related children present had incomes below the poverty level.

Class of Worker and Occupation: In 2008-2012, 81.1 percent of the workforce was private wage and salary workers; 7.5 percent were federal, state, or local government workers; and 11.1 percent were self-employed in their own (not incorporated) business.

The top occupation group for the civilian employed population 16 years and over in the Huntingdon Valley Library service area in 2008-2012 was Management, business, science, and arts (56.8 percent).

¹ Other race includes those who identified themselves as American Indian/Alaska Native, Asian, Native Hawaiian/Other Pacific Islander, Some Other Race and Two or More Races on the 2010 Census form.

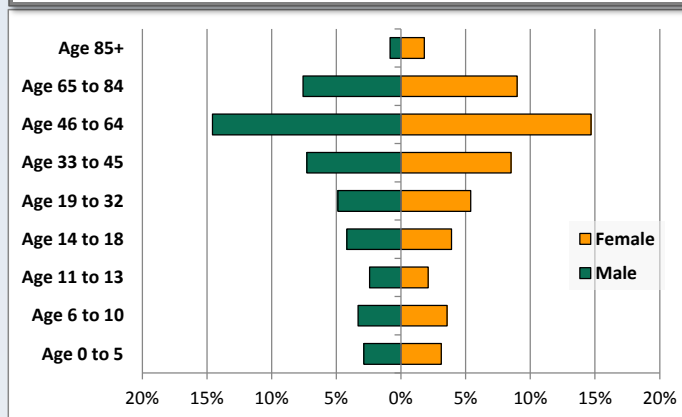
² People of Hispanic origin may be of any race.

Demographic Profile

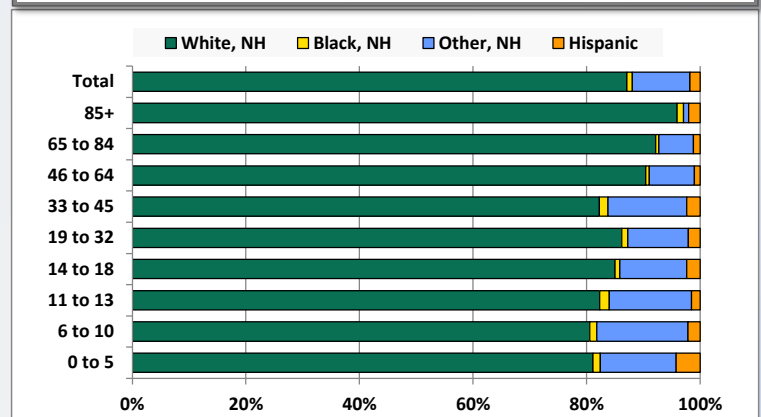
Huntingdon Valley Library

Key Indicators		
	2000	2010
Population Growth		
Total Population	11,281	12,982
10-Year Growth	N/A	15.1%
Diversity		
White Alone, Non-Hispanic	94.7%	87.1%
Black Alone, Non-Hispanic	0.5%	1.0%
Other Race Alone, Non-Hispanic	3.9%	10.1%
Percent Hispanic	0.9%	1.8%
Aging		
Percent 65 Years and Over	20.4%	19.2%
Households		
Percent Married Couple with Own Children	28.6%	31.0%
Percent Living Alone	17.4%	17.0%

Population by Library-Defined Age Group, 2010



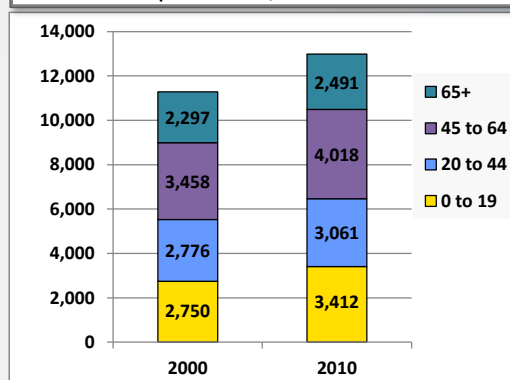
Race/Ethnicity by Library-Defined Age Group, 2010



Population Growth by Library-Defined Age Group, 2000 to 2010

Age Group	2010	Change	
		Numeric	Percent
Total	12,982	1,701	15.1%
85+	343	96	38.9%
65 to 84	2,148	98	4.8%
46 to 64	3,800	551	17.0%
33 to 45	2,050	85	4.3%
19 to 32	1,335	221	19.8%
14 to 18	1,048	221	26.7%
11 to 13	588	78	15.3%
6 to 10	891	143	19.1%
0 to 5	779	208	36.4%

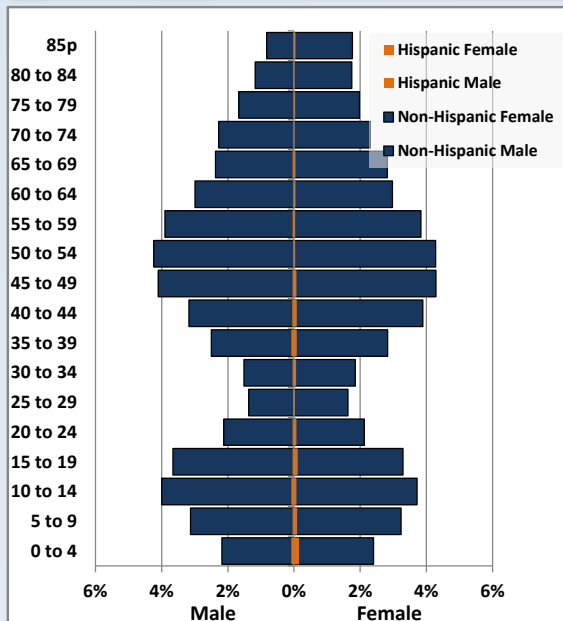
Population Total, 2000 and 2010



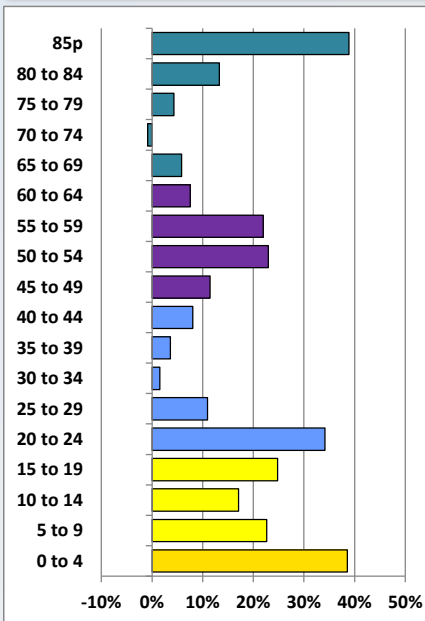
Demographic Profile

Huntingdon Valley Library

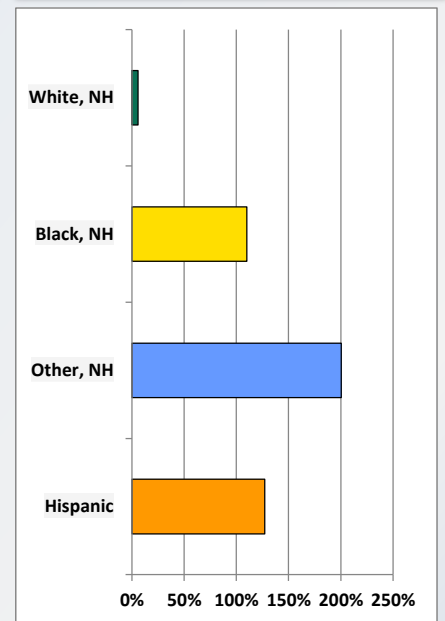
Population by 5-Year Age Cohorts



Pop Change by Age, 2000 to 2010

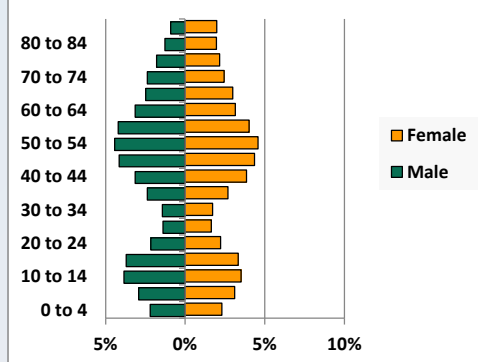


Pop Change by Race/Ethnicity, 2000 to 2010

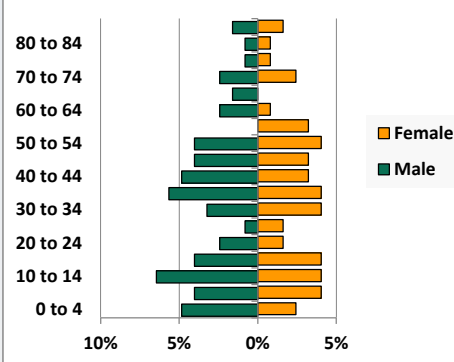


Population by Age, Race and Ethnicity 2010

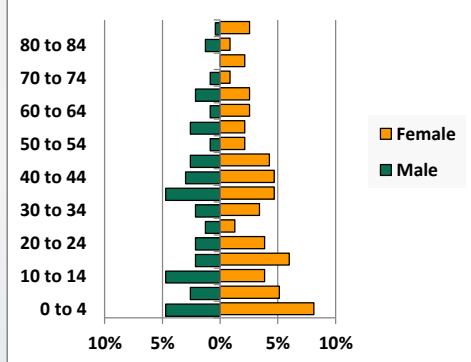
White, Not Hispanic



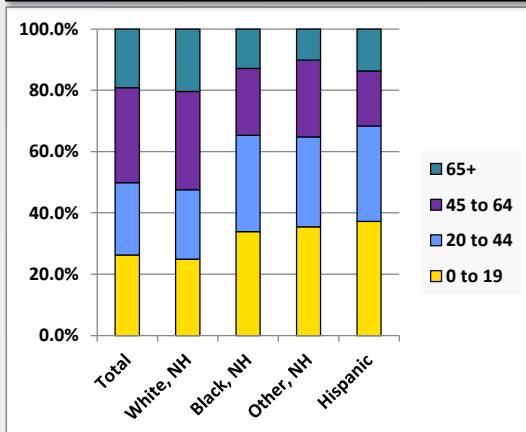
Black, Non-Hispanic



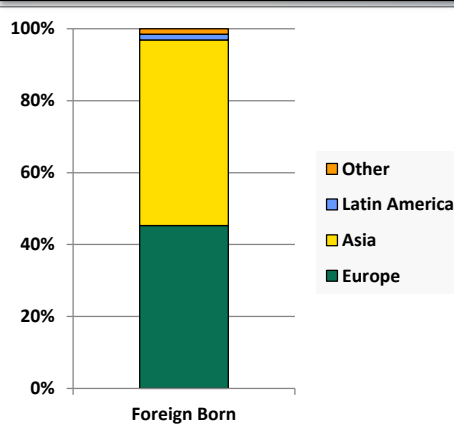
Hispanic



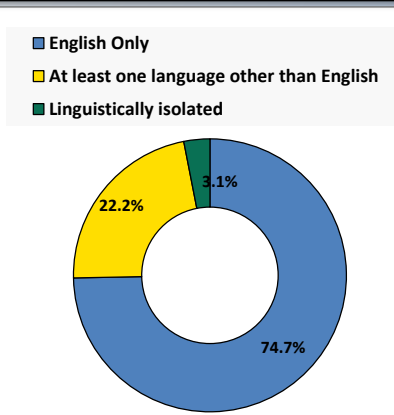
Age by Race and Ethnicity, 2010



Foreign Born, 2010



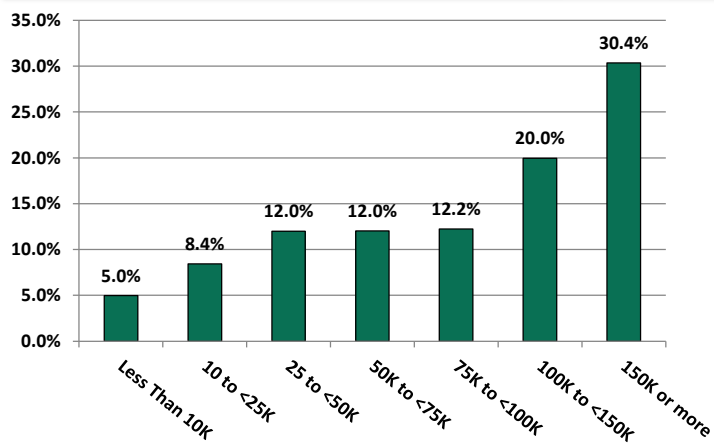
Household Language, 2010



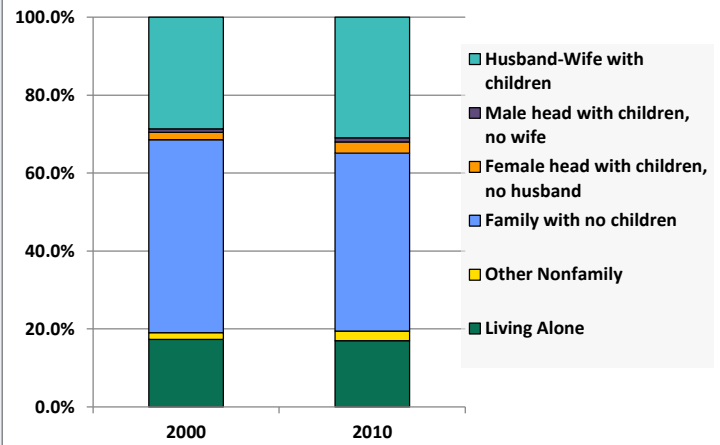
Demographic Profile

Huntingdon Valley Library

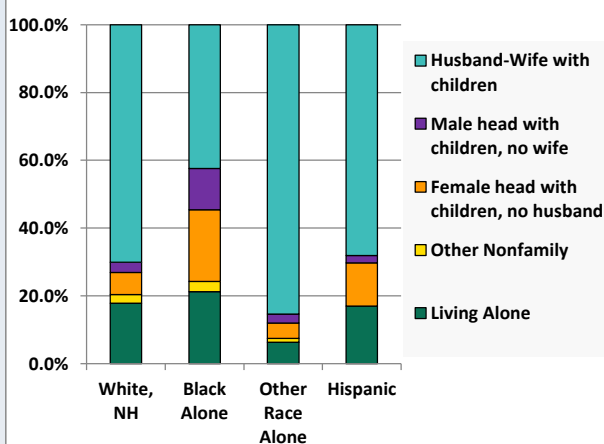
Household Income Distribution, 2008-2012



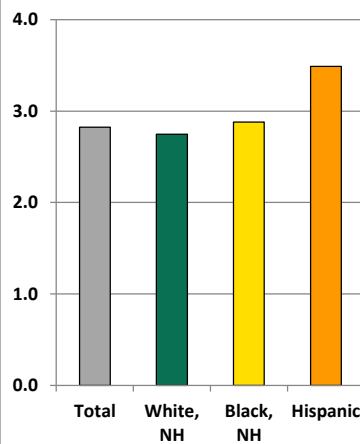
Household Type, 2000 and 2010



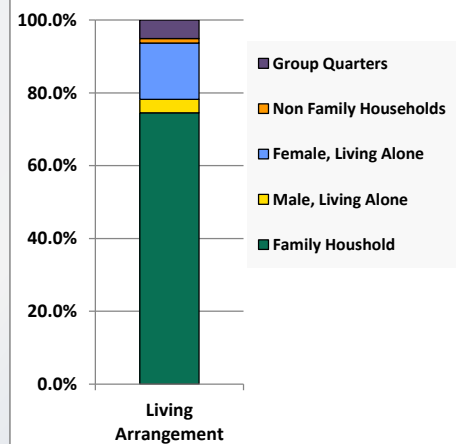
Household Type by Race/Ethnicity, 2010



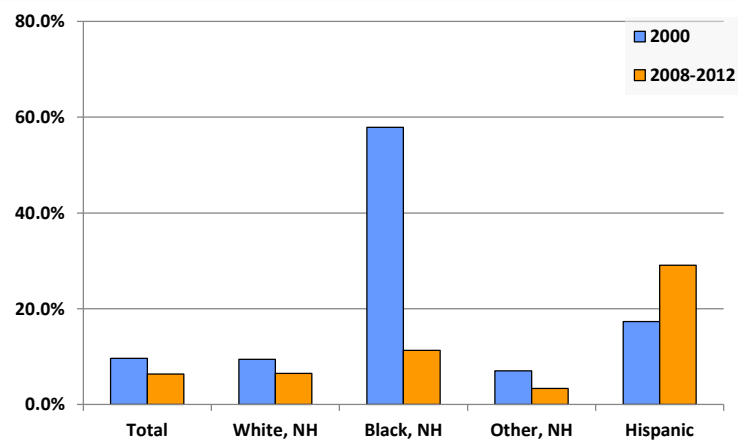
Average Household Size, 2010



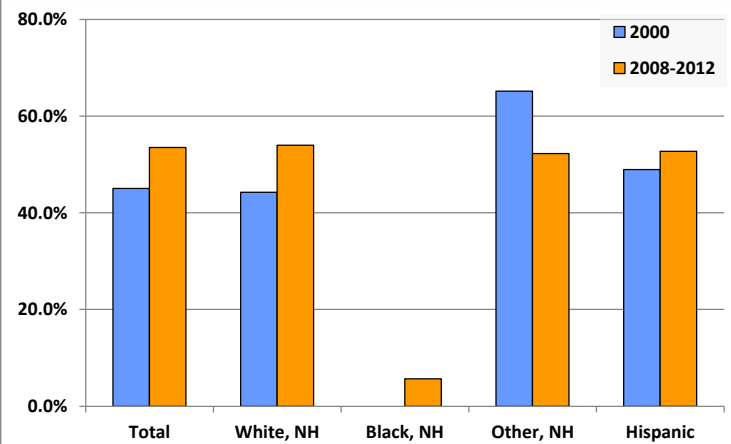
Living Arrangements 65+, 2008-2012



Percent of Adults that Did Not Complete High School



Percent of Adults Who Attained a Bachelor's Degree or Higher



Reference Data

Huntingdon Valley Library

					Detail for Other, Non-Hispanic					
	Total Population	White, Non- Hispanic	Black, Non- Hispanic	Other, Non- Hispanic	AIAN	Asian	NHOPI	Some Other	Two or More	Hispanic or
								Race	Races	Latino
A. Total Population										
2000 Total	11,281	10,681	59	438	4	380	0	7	47	103
2000 pct of Total	100.0%	94.7%	0.5%	3.9%	0.0%	3.4%	0.0%	0.1%	0.4%	0.9%
2010 Total	12,982	11,308	124	1,316	13	1,152	7	8	136	234
2010 pct of Total	100.0%	87.1%	1.0%	10.1%	0.1%	8.9%	0.1%	0.1%	1.0%	1.8%
B. Population by Major Age Groups by Race and Ethnicity										
2000										
0-19	2,750	2,589	12	112	1	87	0	1	23	37
20-64	6,234	5,856	37	286	3	262	0	2	19	55
65+	2,297	2,236	10	40	0	31	0	4	5	11
85+	247	240	2	4	0	4	0	0	0	1
2010										
0-19	3,412	2,817	42	466	6	382	0	5	73	87
20-64	7,079	6,182	66	716	5	643	6	3	59	115
65+	2,491	2,309	16	134	2	127	1	0	4	32
85+	343	329	4	3	0	3	0	0	0	7
C. Age Mix for Each Racial and Ethnic Group										
2000										
0-19	24.4%	24.2%	20.3%	25.6%	25.0%	22.9%	0.0%	14.3%	48.9%	35.9%
20-64	55.3%	54.8%	62.7%	65.3%	75.0%	68.9%	0.0%	28.6%	40.4%	53.4%
65+	20.4%	20.9%	16.9%	9.1%	0.0%	8.2%	0.0%	57.1%	10.6%	10.7%
85+	2.2%	2.2%	3.4%	0.9%	0.0%	1.1%	0.0%	0.0%	0.0%	1.0%
2010										
0-19	26.3%	24.9%	33.9%	35.4%	46.2%	33.2%	0.0%	62.5%	53.7%	37.2%
20-64	54.5%	54.7%	53.2%	54.4%	38.5%	55.8%	85.7%	37.5%	43.4%	49.1%
65+	19.2%	20.4%	12.9%	10.2%	15.4%	11.0%	14.3%	0.0%	2.9%	13.7%
85+	2.6%	2.9%	3.2%	0.2%	0.0%	0.3%	0.0%	0.0%	0.0%	3.0%
D. Racial and Ethnic Composition of Each Age Group										
2000										
0-19	100.0%	94.1%	0.4%	4.1%	0.0%	3.2%	0.0%	0.0%	0.8%	1.3%
20-64	100.0%	93.9%	0.6%	4.6%	0.0%	4.2%	0.0%	0.0%	0.3%	0.9%
65+	100.0%	97.3%	0.4%	1.7%	0.0%	1.3%	0.0%	0.2%	0.2%	0.5%
85+	100.0%	97.2%	0.8%	1.6%	0.0%	1.6%	0.0%	0.0%	0.0%	0.4%
2010										
0-19	100.0%	82.6%	1.2%	13.7%	0.2%	11.2%	0.0%	0.1%	2.1%	2.5%
20-64	100.0%	87.3%	0.9%	10.1%	0.1%	9.1%	0.1%	0.0%	0.8%	1.6%
65+	100.0%	92.7%	0.6%	5.4%	0.1%	5.1%	0.0%	0.0%	0.2%	1.3%
85+	100.0%	95.9%	1.2%	0.9%	0.0%	0.9%	0.0%	0.0%	0.0%	2.0%
E. Population Growth										
2000-2010, Change										
0-19	662	228	30	354	5	295	0	4	50	50
20-64	845	326	29	430	2	381	6	1	40	60
65+	194	73	6	94	2	96	1	-4	-1	21
85+	96	89	2	-1	0	-1	0	0	0	6
Total	1,701	627	65	878	9	772	7	1	89	131
2000-2010, Pct Change										
0-19	24.1%	8.8%	250.0%	316.1%	500.0%	339.1%	0.0%	400.0%	217.4%	135.1%
20-64	13.6%	5.6%	78.4%	150.3%	66.7%	145.4%	0.0%	50.0%	210.5%	109.1%
65+	8.4%	3.3%	60.0%	235.0%	0.0%	309.7%	0.0%	-100.0%	-20.0%	190.9%
85+	38.9%	37.1%	100.0%	-25.0%	0.0%	-25.0%	0.0%	0.0%	0.0%	600.0%
Total	15.1%	5.9%	110.2%	200.5%	225.0%	203.2%	0.0%	14.3%	189.4%	127.2%

Reference Data

Huntingdon Valley Library

					Detail for Other, Non-Hispanic					Hispanic or Latino
	Total Population	White, Non-Hispanic	Black, Non-Hispanic	Other, Non-Hispanic	AIAN	Asian	NHOPI	Some Other	Two or More	
								Race	Races	
F. Population by Library-Defined Age Groups, 2010										
0-5	779	632	10	104	2	79	0	0	23	33
6-10	891	718	11	143	3	115	0	1	24	19
11-13	588	484	10	85	0	72	0	3	10	9
14-18	1,048	891	9	123	1	106	0	1	15	25
19-32	1,335	1,151	14	142	2	123	4	1	12	28
33-45	2,050	1,686	31	284	1	262	0	2	19	49
46-64	3,800	3,437	23	301	2	268	2	0	29	39
65-84	2,148	1,980	12	131	2	124	1	0	4	25
85+	343	329	4	3	0	3	0	0	0	7
Total	12,982	11,308	124	1,316	13	1,152	7	8	136	234
G. Population by 5-Year Age Cohorts, 2010										
0-4	625	508	9	78	2	59	0	0	17	30
5-9	844	681	10	135	2	106	0	1	26	18
10-14	1,022	831	13	158	1	132	0	4	21	20
15-19	921	797	10	95	1	85	0	0	9	19
20-24	566	497	5	50	1	45	2	0	2	14
25-29	395	343	3	43	1	37	0	1	4	6
30-34	451	357	9	72	0	62	2	0	8	13
35-39	713	573	12	106	0	99	0	1	6	22
40-44	936	792	10	116	1	106	0	1	8	18
45-49	1,106	962	9	119	0	109	0	0	10	16
50-54	1,113	1,018	10	78	2	70	1	0	5	7
55-59	1,016	929	4	72	0	63	1	0	8	11
60-64	783	711	4	60	0	52	0	0	8	8
65-69	685	618	2	54	1	52	0	0	1	11
70-74	600	546	6	44	0	41	1	0	2	4
75-79	479	449	2	23	0	23	0	0	0	5
80-84	384	367	2	10	1	8	0	0	1	5
85-89	245	240	3	0	0	0	0	0	0	2
90-94	82	77	1	0	0	0	0	0	0	4
95-99	13	10	0	2	0	2	0	0	0	1
100+	3	2	0	1	0	1	0	0	0	0
Total	12,982	11,308	124	1,316	13	1,152	7	8	136	234

Source: Decennial Census 2010, 2000, American Community Survey 2008-2012

Prepared for the Pennsylvania State Library by The Pennsylvania State Data Center, 9/2014

Reference Data

Huntingdon Valley Library

H. Income Distribution, 2008-2012

Range (in thousands)	Households	Pct of Total
<\$10K	221	5.0%
\$10K to <\$25K	375	8.4%
\$25K to <\$50K	534	12.0%
\$50K to <\$75K	536	12.0%
\$75K to <\$100K	545	12.2%
\$100K to <\$150K	888	20.0%
\$150K+	1,351	30.4%

I. Household Type, 2010

Household Type	2000	2000pct	2010	2010pct
Total Households	4,112	100.0%	4,548	100.0%
Family Households	3,329	81.0%	3,662	80.5%
Husband-wife, no children w/children	1,178	28.6%	1,408	31.0%
Female head, no husband, w/ children	76	1.8%	130	2.9%
Male head, no wife, w/ children	37	0.9%	49	1.1%
Without children	2,038	49.6%	2,075	45.6%
Nonfamily households	783	19.0%	886	19.5%
Living alone	714	17.4%	775	17.0%
Other nonfamily	69	1.7%	111	2.4%

J. Household Type by Race and Ethnicity, 2008-2012

Household Type	White, NH	Black, NH	Other, NH	Hispanic
Total Households	4,132	33	349	47
Husband wife family	70.1%	42.4%	85.4%	68.1%
Family with male head, no wife	3.0%	12.1%	2.6%	2.1%
family with female head, no husband	6.4%	21.2%	4.6%	12.8%
Living alone	17.9%	21.2%	6.3%	17.0%
Other nonfamily	2.6%	3.0%	1.1%	0.0%

K. Poverty, 2008-2012

Families	Poverty	PA
All families	4.1%	9.1%
Families w/ related children	7.4%	15.3%
Female householder, no husband present	11.1%	28.8%
Female householder, no husband present, w/ related children	40.4%	39.2%
All people	5.4%	13.1%
Under 18 years	7.9%	18.4%
18 to 64 years	4.4%	12.3%
65 years and over	5.3%	8.4%

L. Educational Attainment by Race and Ethnicity, 2008-2012

Education Level	White, NH	Black	Other	Hispanic	Total
Population 25 years and over	7,986	53	775	55	8,858
Less than high school	6.5%	11.3%	3%	29.1%	6.4%
High school graduate (includes equivalency)	20.3%	75.5%	26%	1.8%	21.0%
Some college or associates degree	19.2%	7.5%	18%	16.4%	19.1%
Bachelors degree or higher	54.0%	5.7%	52%	52.7%	53.5%

M. Occupation, 2008-2012

Occupation	Estimate	Percent
Civilian population age 16 years and over	5,934	100.0%
Management, professional, and related occupations	3,373	56.8%
Service occupations	521	8.8%
Sales and office occupations	1,337	22.5%
Farming, fishing, and forestry occupations	1	0.0%
Construction, extraction, maintenance, and repair occupations	410	6.9%
Production, transportation, and material moving occupations	292	4.9%

N. Class of Worker, 2008-2012

Occupation	Estimate	Percent
Civilian population age 16 years and over	5,934	100.0%
Private, for profit, wage and salary employee	3,524	59.4%
Private, not for profit, wage and salary employee	729	12.3%
Private, for profit, wage and salary self-employed in own business	559	9.4%
Government workers	443	7.5%
Self-employed in own not incorporated business	661	11.1%
Unpaid family workers in family business	18	0.3%