

Demographic Profile

James A. Stone Memorial Library

Population Growth: The total population of the James A. Stone Memorial Library service area decreased by - 7.0 percent over the past decade to 3,486; this decline rate was lower than the statewide rate of 3.4 percent.

Age and Sex: In 2010, the James A. Stone Memorial Library service area had a total population of 3,486 - 1,746 males (50.1 percent) and 1,740 females (49.9 percent). The age structure of the population in 2010 was as follows: 25.1 percent of the population was under 20 years old, 55.5 percent was 20 to 64 years old and 19.4 percent was 65 years or older.

Race and Ethnicity: For people reporting one race alone, not of Hispanic ethnicity, 97.8 percent were White; .6 percent were Black or African American; .9 percent were Other Race Alone.¹ A total of 25 or .7 percent of the population were Hispanic.²

Households: In 2010, there were 1,301 households in the James A. Stone Memorial Library service area. The average household size was 2.56 people. Families made up 70.5 percent of the households. This figure includes both families with (26.1 percent) and without (44.4 percent) children. Of families with children less than 18 years old, 19.5 percent were married-couple families, 3.8 percent were female householder families with no husband present, and the remaining (2.8 percent) were male-headed households with no wife present.

Education: The educational attainment of the population 25 years and over was lower in the James A. Stone Memorial Library service area than in Pennsylvania. During the period 2008-2012, 11.9 percent of residents had earned a Bachelor's degree or higher, compared with 27.0 percent statewide. A total of 427 or 16.9 percent had not completed high school, compared with 11.7 percent for the commonwealth as a whole.

Income and Poverty: Households with incomes of \$25,000 to \$49,999 (34.2 percent) made up the largest percent of households in the James A. Stone Memorial Library service area in 2008-2012. For comparison, 24.4 percent of commonwealth households were in this range during the period.

In 2008-2012, the overall poverty rate for the James A. Stone Memorial Library service area was lower than Pennsylvania (12.2 percent compared to 13.1 percent). The poverty rate for the population under 18 years of age was 17.1 percent, compared with 11.9 percent of people 18 to 64 years and 5.6 percent for those aged 65 years and over. A total of 89 or 9.1 percent of all families had incomes below poverty level. In 2008-2012, 17.2 percent of families with related children and 46.9 percent of families with a female householder and no husband with related children present had incomes below the poverty level.

Class of Worker and Occupation: In 2008-2012, 76.7 percent of the workforce was private wage and salary workers; 10.5 percent were federal, state, or local government workers; and 12.2 percent were self-employed in their own (not incorporated) business.

The top occupation group for the civilian employed population 16 years and over in the James A. Stone Memorial Library service area in 2008-2012 was Management, business, science, and arts (25.8 percent).

¹ Other race includes those who identified themselves as American Indian/Alaska Native, Asian, Native Hawaiian/Other Pacific Islander, Some Other Race and Two or More Races on the 2010 Census form.

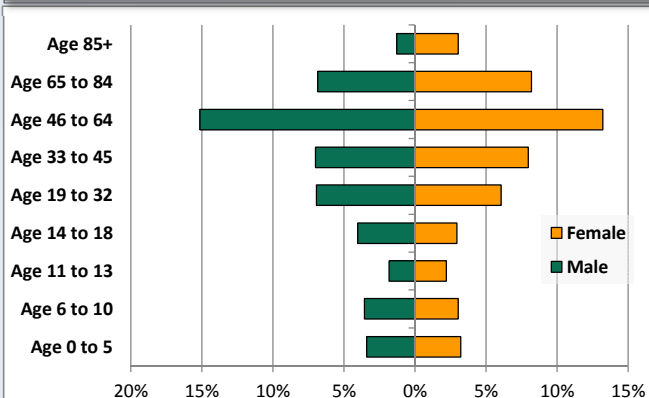
² People of Hispanic origin may be of any race.

Demographic Profile

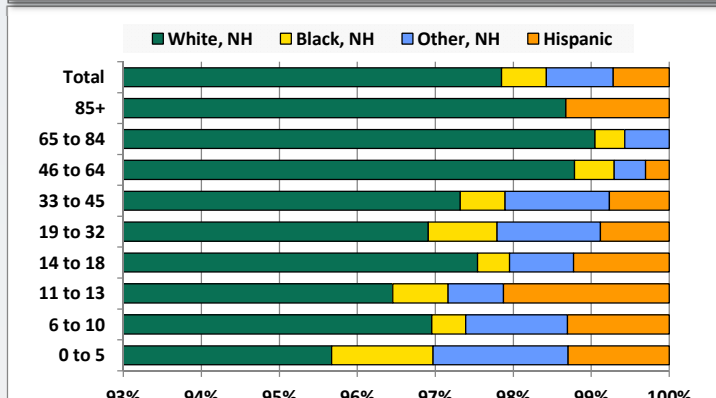
James A. Stone Memorial Library

Key Indicators		
	2000	2010
Population Growth		
Total Population	3,748	3,486
10-Year Growth	N/A	-7.0%
Diversity		
White Alone, Non-Hispanic	98.6%	97.8%
Black Alone, Non-Hispanic	0.3%	0.6%
Other Race Alone, Non-Hispanic	0.9%	0.9%
Percent Hispanic	0.2%	0.7%
Aging		
Percent 65 Years and Over	18.0%	19.4%
Households		
Percent Married Couple with Own Children	24.7%	19.5%
Percent Living Alone	23.3%	24.9%

Population by Library-Defined Age Group, 2010



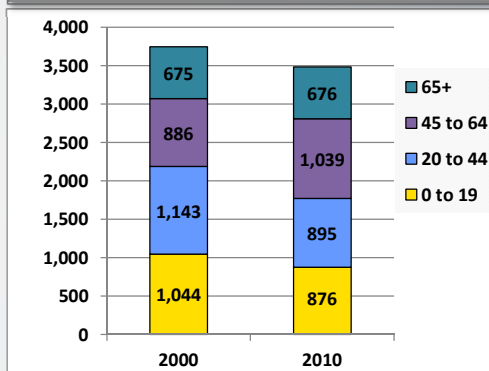
Race/Ethnicity by Library-Defined Age Group, 2010



Population Growth by Library-Defined Age Group, 2000 to 2010

Age Group	2010	Change	
		Numeric	Percent
Total	3,486	-262	-7.0%
85+	151	21	16.2%
65 to 84	525	-20	-3.7%
46 to 64	989	155	18.6%
33 to 45	522	-196	-27.3%
19 to 32	453	-62	-12.0%
14 to 18	244	-57	-18.9%
11 to 13	141	-33	-19.0%
6 to 10	230	-49	-17.6%
0 to 5	231	-21	-8.3%

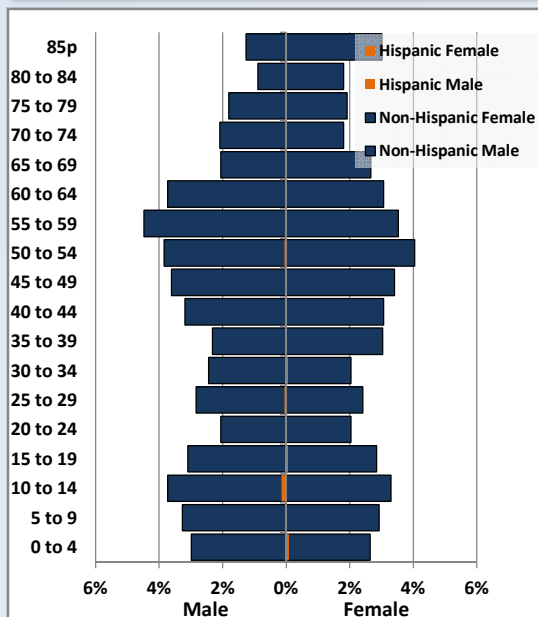
Population Total, 2000 and 2010



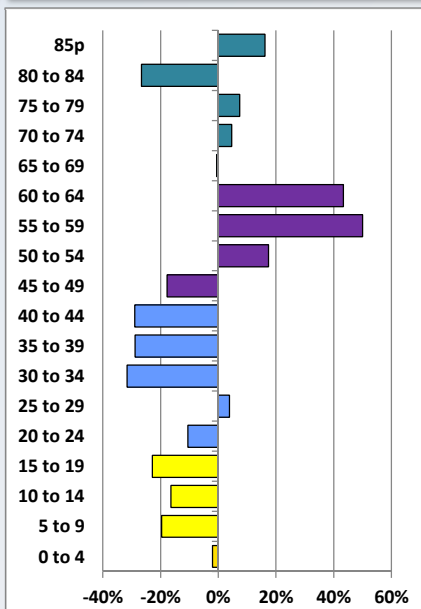
Demographic Profile

James A. Stone Memorial Library

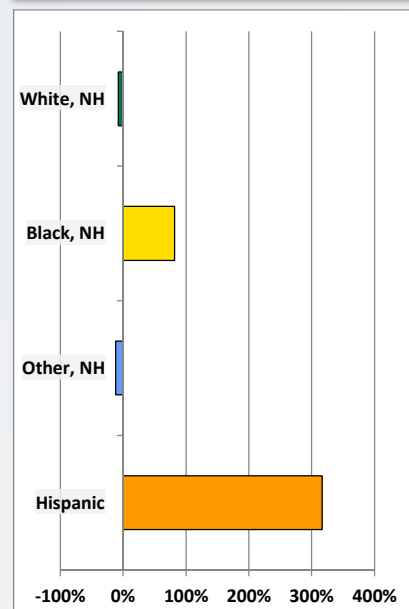
Population by 5-Year Age Cohorts



Pop Change by Age, 2000 to 2010

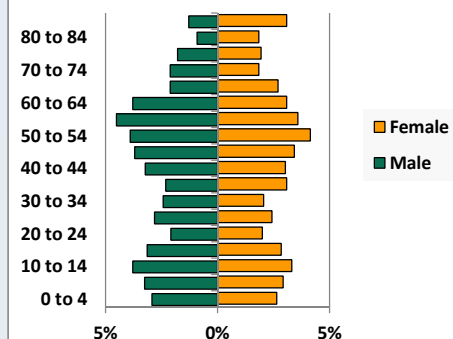


Pop Change by Race/Ethnicity, 2000 to 2010

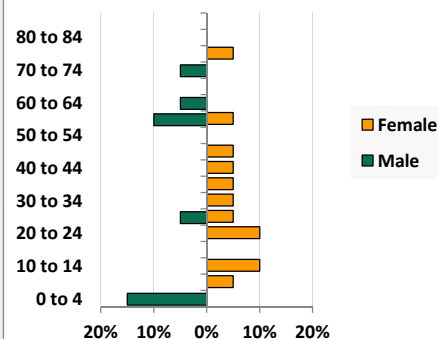


Population by Age, Race and Ethnicity 2010

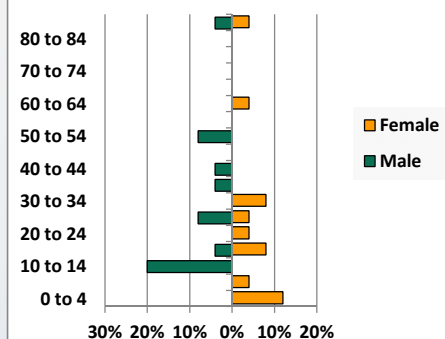
White, Not Hispanic



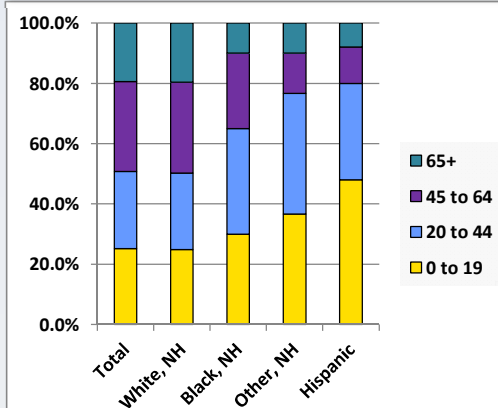
Black, Non-Hispanic



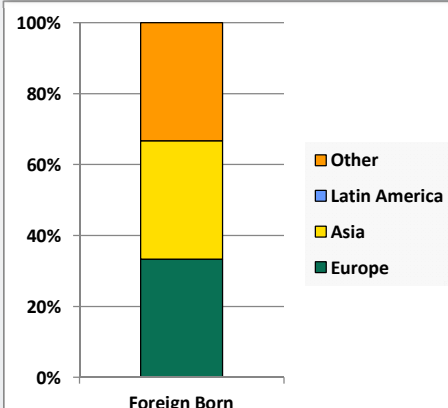
Hispanic



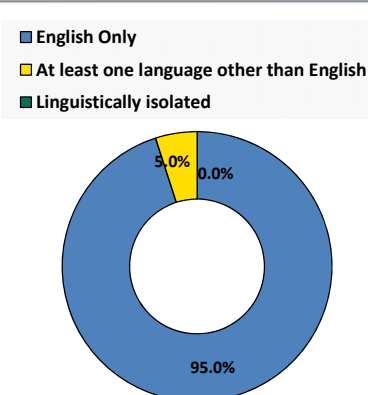
Age by Race and Ethnicity, 2010



Foreign Born, 2010



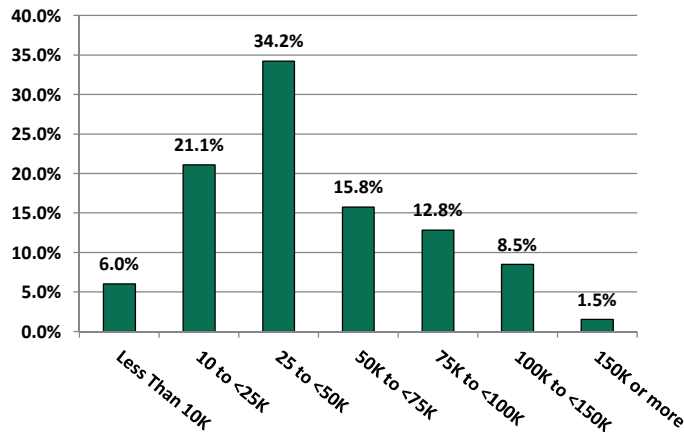
Household Language, 2010



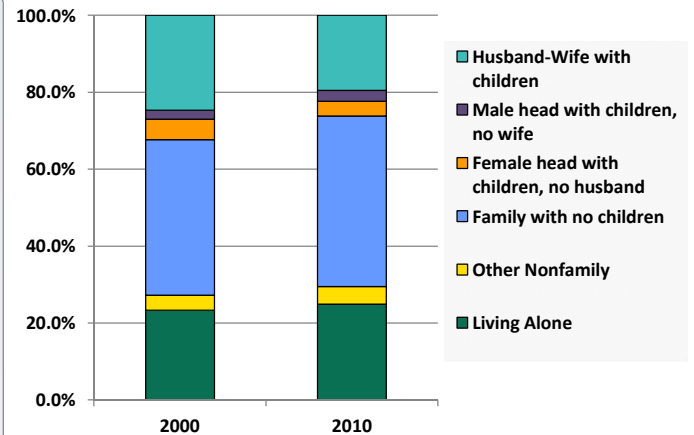
Demographic Profile

James A. Stone Memorial Library

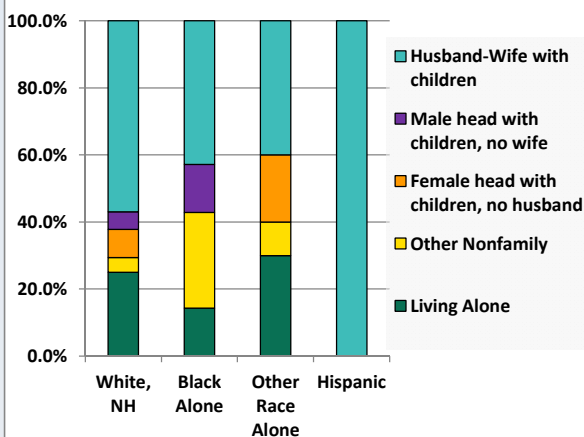
Household Income Distribution, 2008-2012



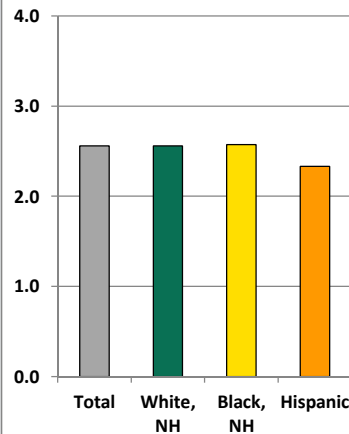
Household Type, 2000 and 2010



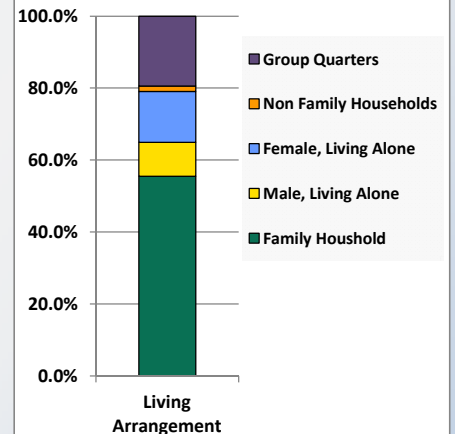
Household Type by Race/Ethnicity, 2010



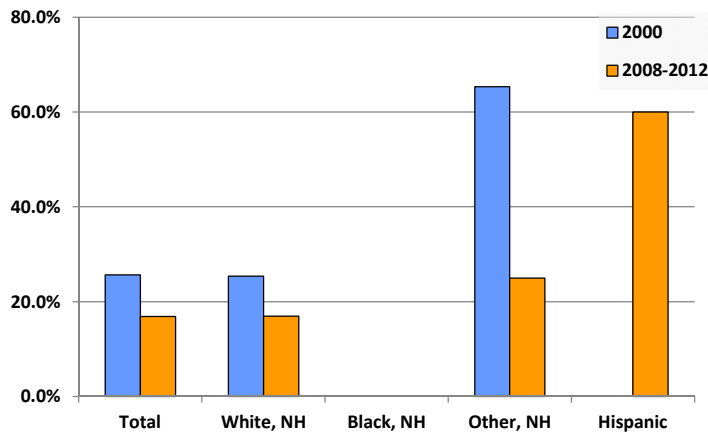
Average Household Size, 2010



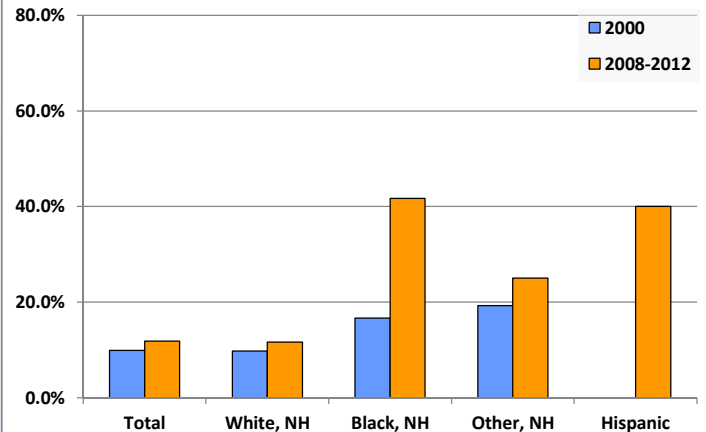
Living Arrangements 65+, 2008-2012



Percent of Adults that Did Not Complete High School



Percent of Adults Who Attained a Bachelor's Degree or Higher



Reference Data

James A. Stone Memorial Library

					Detail for Other, Non-Hispanic					
	Total Population	White, Non- Hispanic	Black, Non- Hispanic	Other, Non- Hispanic	AIAN	Asian	NHOPI	Some Other	Two or More	Hispanic or Latino
								Race	Races	
A. Total Population										
2000 Total	3,748	3,697	11	34	6	1	0	0	27	6
2000 pct of Total	100.0%	98.6%	0.3%	0.9%	0.2%	0.0%	0.0%	0.0%	0.7%	0.2%
2010 Total	3,486	3,411	20	30	7	5	0	0	18	25
2010 pct of Total	100.0%	97.8%	0.6%	0.9%	0.2%	0.1%	0.0%	0.0%	0.5%	0.7%
B. Population by Major Age Groups by Race and Ethnicity										
2000										
0-19	1,044	1,023	2	15	2	0	0	0	13	4
20-64	2,029	2,003	8	17	3	1	0	0	13	1
65+	675	671	1	2	1	0	0	0	1	1
85+	130	129	0	1	0	0	0	0	1	0
2010										
0-19	876	847	6	11	1	1	0	0	9	12
20-64	1,934	1,895	12	16	5	3	0	0	8	11
65+	676	669	2	3	1	1	0	0	1	2
85+	151	149	0	0	0	0	0	0	0	2
C. Age Mix for Each Racial and Ethnic Group										
2000										
0-19	27.9%	27.7%	18.2%	44.1%	33.3%	0.0%	0.0%	0.0%	48.1%	66.7%
20-64	54.1%	54.2%	72.7%	50.0%	50.0%	100.0%	0.0%	0.0%	48.1%	16.7%
65+	18.0%	18.1%	9.1%	5.9%	16.7%	0.0%	0.0%	0.0%	3.7%	16.7%
85+	3.5%	3.5%	0.0%	2.9%	0.0%	0.0%	0.0%	0.0%	3.7%	0.0%
2010										
0-19	25.1%	24.8%	30.0%	36.7%	14.3%	20.0%	0.0%	0.0%	50.0%	48.0%
20-64	55.5%	55.6%	60.0%	53.3%	71.4%	60.0%	0.0%	0.0%	44.4%	44.0%
65+	19.4%	19.6%	10.0%	10.0%	14.3%	20.0%	0.0%	0.0%	5.6%	8.0%
85+	4.3%	4.4%	0.0%	0.0%	0.0%	0.0%	0.0%	0.0%	0.0%	8.0%
D. Racial and Ethnic Composition of Each Age Group										
2000										
0-19	100.0%	98.0%	0.2%	1.4%	0.2%	0.0%	0.0%	0.0%	1.2%	0.4%
20-64	100.0%	98.7%	0.4%	0.8%	0.1%	0.0%	0.0%	0.0%	0.6%	0.0%
65+	100.0%	99.4%	0.1%	0.3%	0.1%	0.0%	0.0%	0.0%	0.1%	0.1%
85+	100.0%	99.2%	0.0%	0.8%	0.0%	0.0%	0.0%	0.0%	0.8%	0.0%
2010										
0-19	100.0%	96.7%	0.7%	1.3%	0.1%	0.1%	0.0%	0.0%	1.0%	1.4%
20-64	100.0%	98.0%	0.6%	0.8%	0.3%	0.2%	0.0%	0.0%	0.4%	0.6%
65+	100.0%	99.0%	0.3%	0.4%	0.1%	0.1%	0.0%	0.0%	0.1%	0.3%
85+	100.0%	98.7%	0.0%	0.0%	0.0%	0.0%	0.0%	0.0%	0.0%	1.3%
E. Population Growth										
2000-2010, Change										
0-19	-168	-176	4	-4	-1	1	0	0	-4	8
20-64	-95	-108	4	-1	2	2	0	0	-5	10
65+	1	-2	1	1	0	1	0	0	0	1
85+	21	20	0	-1	0	0	0	0	-1	2
Total	-262	-286	9	-4	1	4	0	0	-9	19
2000-2010, Pct Change										
0-19	-16.1%	-17.2%	200.0%	-26.7%	-50.0%	0.0%	0.0%	0.0%	-30.8%	200.0%
20-64	-4.7%	-5.4%	50.0%	-5.9%	66.7%	200.0%	0.0%	0.0%	-38.5%	1000.0%
65+	0.1%	-0.3%	100.0%	50.0%	0.0%	0.0%	0.0%	0.0%	0.0%	100.0%
85+	16.2%	15.5%	0.0%	-100.0%	0.0%	0.0%	0.0%	0.0%	-100.0%	0.0%
Total	-7.0%	-7.7%	81.8%	-11.8%	16.7%	400.0%	0.0%	0.0%	-33.3%	316.7%

Source: Decennial Census 2010, 2000, American Community Survey 2008-2012

Prepared for the Pennsylvania State Library by The Pennsylvania State Data Center, 9/2014

Reference Data

James A. Stone Memorial Library

	Total Population	White, Non- Hispanic	Black, Non- Hispanic	Other, Non- Hispanic	Detail for Other, Non-Hispanic					Hispanic or Latino
					AIAN	Asian	NHOPI	Some Other Race	Two or More Races	
F. Population by Library-Defined Age Groups, 2010										
0-5	231	221	3	4	0	0	0	0	4	3
6-10	230	223	1	3	0	0	0	0	3	3
11-13	141	136	1	1	0	1	0	0	0	3
14-18	244	238	1	2	1	0	0	0	1	3
19-32	453	439	4	6	1	1	0	0	4	4
33-45	522	508	3	7	3	1	0	0	3	4
46-64	989	977	5	4	1	1	0	0	2	3
65-84	525	520	2	3	1	1	0	0	1	0
85+	151	149	0	0	0	0	0	0	0	2
Total	3,486	3,411	20	30	7	5	0	0	18	25
G. Population by 5-Year Age Cohorts, 2010										
0-4	199	190	3	3	0	0	0	0	3	3
5-9	217	211	1	4	0	0	0	0	4	1
10-14	250	242	2	1	0	1	0	0	0	5
15-19	210	204	0	3	1	0	0	0	2	3
20-24	144	139	2	2	0	0	0	0	2	1
25-29	186	179	2	2	0	1	0	0	1	3
30-34	158	153	1	2	1	0	0	0	1	2
35-39	188	184	1	2	1	0	0	0	1	1
40-44	219	213	1	4	2	1	0	0	1	1
45-49	245	243	1	1	1	0	0	0	0	0
50-54	277	274	0	1	0	0	0	0	1	2
55-59	279	276	3	0	0	0	0	0	0	0
60-64	238	234	1	2	0	1	0	0	1	1
65-69	165	164	0	1	0	1	0	0	0	0
70-74	136	135	1	0	0	0	0	0	0	0
75-79	130	127	1	2	1	0	0	0	1	0
80-84	94	94	0	0	0	0	0	0	0	0
85-89	76	76	0	0	0	0	0	0	0	0
90-94	61	60	0	0	0	0	0	0	0	1
95-99	11	10	0	0	0	0	0	0	0	1
100+	3	3	0	0	0	0	0	0	0	0
Total	3,486	3,411	20	30	7	5	0	0	18	25

Source: Decennial Census 2010, 2000, American Community Survey 2008-2012
 Prepared for the Pennsylvania State Library by The Pennsylvania State Data Center, 9/2014

Reference Data

James A. Stone Memorial Library

H. Income Distribution, 2008-2012			I. Household Type, 2010				
Range (in thousands)	Households	Pct of Total	Household Type	2000	2000pct	2010	2010pct
<\$10K	82	6.0%	Total Households	1,348	100.0%	1,301	100.0%
\$10K to <\$25K	288	21.1%	Family Households	981	72.8%	917	70.5%
\$25K to <\$50K	467	34.2%	Husband-wife, no children w/children	333	24.7%	254	19.5%
\$50K to <\$75K	215	15.8%	Female head, no husband, w/ children	72	5.3%	49	3.8%
\$75K to <\$100K	175	12.8%	Male head, no wife, w/ children	31	2.3%	37	2.8%
\$100K to <\$150K	116	8.5%	Without children	545	40.4%	577	44.4%
\$150K+	21	1.5%	Nonfamily households	367	27.2%	384	29.5%
			Living alone	314	23.3%	324	24.9%
			Other nonfamily	53	3.9%	60	4.6%

J. Household Type by Race and Ethnicity, 2008-2012				
Household Type	White, NH	Black, NH	Other, NH	Hispanic
Total Households	1,281	7	10	3
Husband wife family	57.0%	42.9%	40.0%	100.0%
Family with male head, no wife	5.2%	14.3%	0.0%	0.0%
family with female head, no husband	8.4%	0.0%	20.0%	0.0%
Living alone	25.0%	14.3%	30.0%	0.0%
Other nonfamily	4.4%	28.6%	10.0%	0.0%

K. Poverty, 2008-2012		
Families	Poverty	PA
All families	9.1%	9.1%
Families w/ related children	17.2%	15.3%
Female householder, no husband present	39.1%	28.8%
Female householder, no husband present, w/ related children	46.9%	39.2%
All people	12.2%	13.1%
Under 18 years	17.1%	18.4%
18 to 64 years	11.9%	12.3%
65 years and over	5.6%	8.4%

L. Educational Attainment by Race and Ethnicity, 2008-2012					
Education Level	White, NH	Black	Other	Hispanic	Total
Population 25 years and over	2,503	12	16	5	2,531
Less than high school	16.9%	0.0%	25%	60.0%	16.9%
High school graduate (includes equivalency)	50.6%	41.7%	31%	0.0%	50.4%
Some college or associates degree	20.9%	16.7%	19%	0.0%	20.9%
Bachelors degree or higher	11.6%	41.7%	25%	40.0%	11.9%

M. Occupation, 2008-2012		
Occupation	Estimate	Percent
Civilian population age 16 years and over	1,504	100.0%
Management, professional, and related occupations	388	25.8%
Service occupations	267	17.8%
Sales and office occupations	320	21.3%
Farming, fishing, and forestry occupations	6	0.4%
Construction, extraction, maintenance, and repair occupations	211	14.0%
Production, transportation, and material moving occupations	312	20.7%

N. Class of Worker, 2008-2012		
Occupation	Estimate	Percent
Civilian population age 16 years and over	1,504	100.0%
Private, for profit, wage and salary employee	982	65.3%
Private, not for profit, wage and salary employee	109	7.2%
Private, for profit, wage and salary self-employed in own business	63	4.2%
Government workers	158	10.5%
Self-employed in own not incorporated business	184	12.2%
Unpaid family workers in family business	8	0.5%

Source: Decennial Census 2010, 2000, American Community Survey 2008-2012
Prepared for the Pennsylvania State Library by The Pennsylvania State Data Center, 9/2014