

Demographic Profile

Jane & Annetta Herr Memorial Library

Population Growth: The total population of the Jane & Annetta Herr Memorial Library service area decreased by -1.5 percent over the past decade to 3,540; this decline rate was lower than the statewide rate of 3.4 percent.

Age and Sex: In 2010, the Jane & Annetta Herr Memorial Library service area had a total population of 3,540 - 1,698 males (48.0 percent) and 1,842 females (52.0 percent). The age structure of the population in 2010 was as follows: 24.7 percent of the population was under 20 years old, 56.2 percent was 20 to 64 years old and 19.1 percent was 65 years or older.

Race and Ethnicity: For people reporting one race alone, not of Hispanic ethnicity, 97.5 percent were White; .6 percent were Black or African American; 1.0 percent were Other Race Alone.¹ A total of 31 or .9 percent of the population were Hispanic.²

Households: In 2010, there were 1,554 households in the Jane & Annetta Herr Memorial Library service area. The average household size was 2.28 people. Families made up 64.4 percent of the households. This figure includes both families with (27.4 percent) and without (36.9 percent) children. Of families with children less than 18 years old, 18.5 percent were married-couple families, 6.7 percent were female householder families with no husband present, and the remaining (2.2 percent) were male-headed households with no wife present.

Education: The educational attainment of the population 25 years and over was lower in the Jane & Annetta Herr Memorial Library service area than in Pennsylvania. During the period 2008-2012, 25.2 percent of residents had earned a Bachelor's degree or higher, compared with 27.0 percent statewide. A total of 225 or 9.3 percent had not completed high school, compared with 11.7 percent for the commonwealth as a whole.

Income and Poverty: Households with incomes of less than \$25,000 (30.0 percent) made up the largest percent of households in the Jane & Annetta Herr Memorial Library service area in 2008-2012. For comparison, 23.6 percent of commonwealth households were in this range during the period.

In 2008-2012, the overall poverty rate for the Jane & Annetta Herr Memorial Library service area was lower than Pennsylvania (7.7 percent compared to 13.1 percent). The poverty rate for the population under 18 years of age was 10.5 percent, compared with 7.9 percent of people 18 to 64 years and 3.5 percent for those aged 65 years and over. A total of 34 or 3.5 percent of all families had incomes below poverty level. In 2008-2012, 4.7 percent of families with related children and 56.8 percent of families with a female householder and no husband with related children present had incomes below the poverty level.

Class of Worker and Occupation: In 2008-2012, 77.5 percent of the workforce was private wage and salary workers; 19.6 percent were federal, state, or local government workers; and 2.9 percent were self-employed in their own (not incorporated) business.

The top occupation group for the civilian employed population 16 years and over in the Jane & Annetta Herr Memorial Library service area in 2008-2012 was Management, business, science, and arts (39.6 percent).

¹ Other race includes those who identified themselves as American Indian/Alaska Native, Asian, Native Hawaiian/Other Pacific Islander, Some Other Race and Two or More Races on the 2010 Census form.

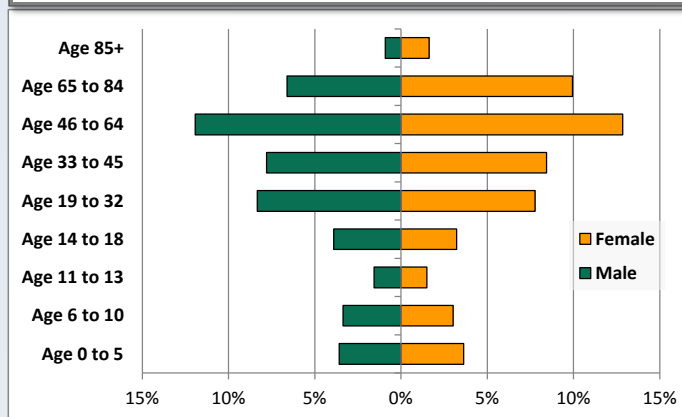
² People of Hispanic origin may be of any race.

Demographic Profile

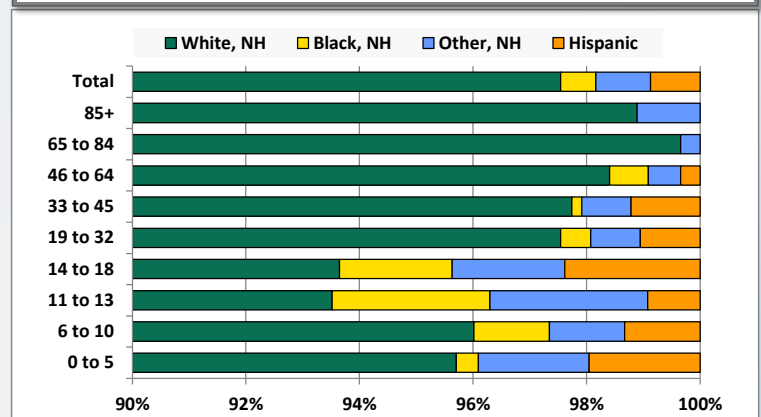
Jane & Annetta Herr Memorial Library

Key Indicators		
	2000	2010
Population Growth		
Total Population	3,594	3,540
10-Year Growth	N/A	-1.5%
Diversity		
White Alone, Non-Hispanic	97.8%	97.5%
Black Alone, Non-Hispanic	0.4%	0.6%
Other Race Alone, Non-Hispanic	1.0%	1.0%
Percent Hispanic	0.8%	0.9%
Aging		
Percent 65 Years and Over	16.6%	19.1%
Households		
Percent Married Couple with Own Children	23.5%	18.5%
Percent Living Alone	27.7%	32.4%

Population by Library-Defined Age Group, 2010



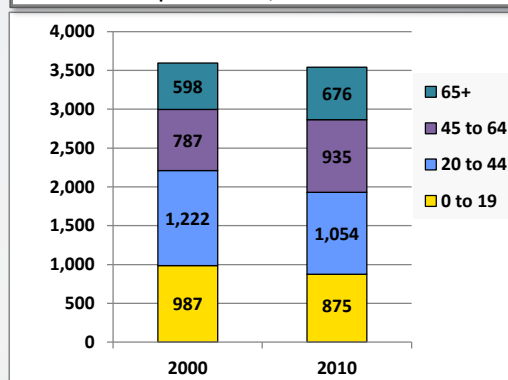
Race/Ethnicity by Library-Defined Age Group, 2010



Population Growth by Library-Defined Age Group, 2000 to 2010

Age Group	2010	Change	
		Numeric	Percent
Total	3,540	-54	-1.5%
85+	90	26	40.6%
65 to 84	586	52	9.7%
46 to 64	877	144	19.6%
33 to 45	575	-150	-20.7%
19 to 32	570	-18	-3.1%
14 to 18	252	-1	-0.4%
11 to 13	108	-51	-32.1%
6 to 10	226	-48	-17.5%
0 to 5	256	-8	-3.0%

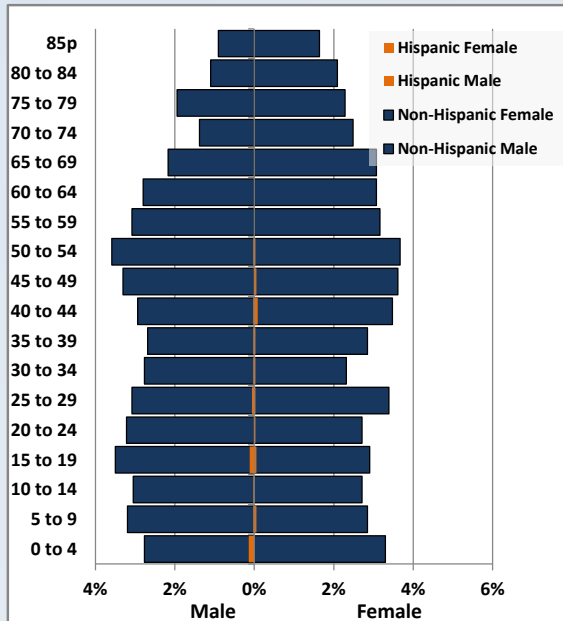
Population Total, 2000 and 2010



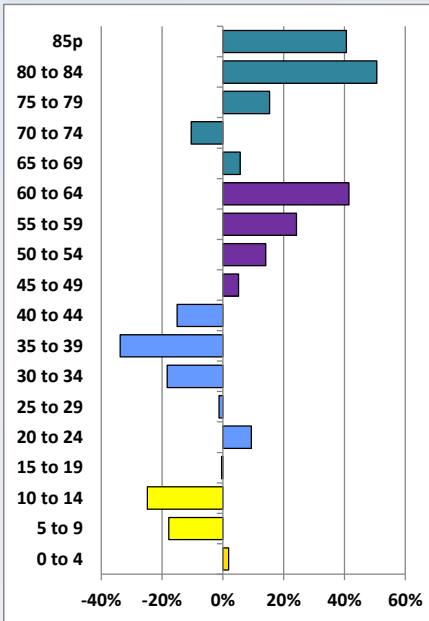
Demographic Profile

Jane & Annetta Herr Memorial Library

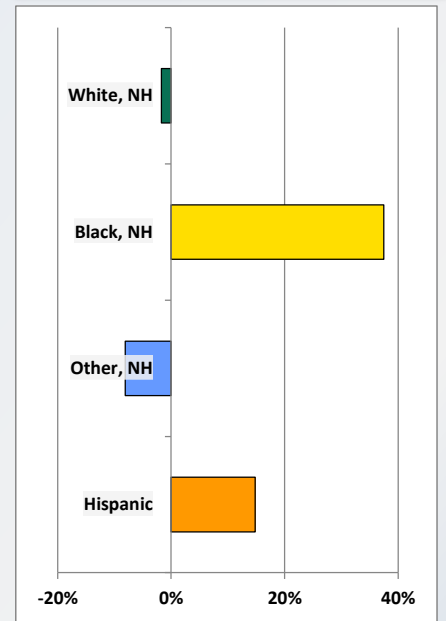
Population by 5-Year Age Cohorts



Pop Change by Age, 2000 to 2010

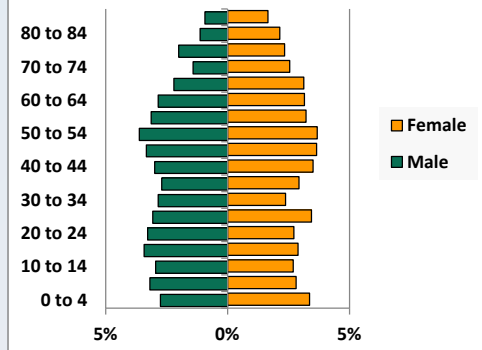


Pop Change by Race/Ethnicity, 2000 to 2010

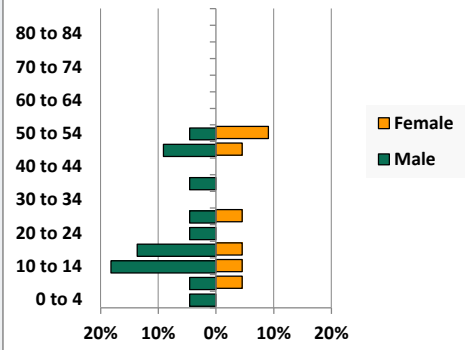


Population by Age, Race and Ethnicity 2010

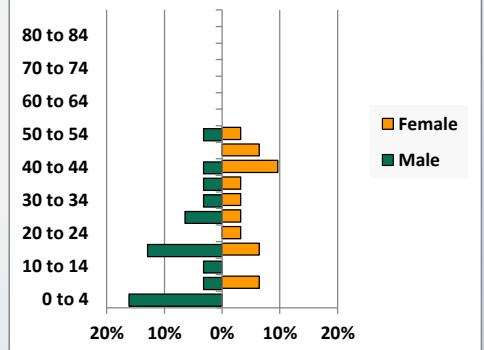
White, Not Hispanic



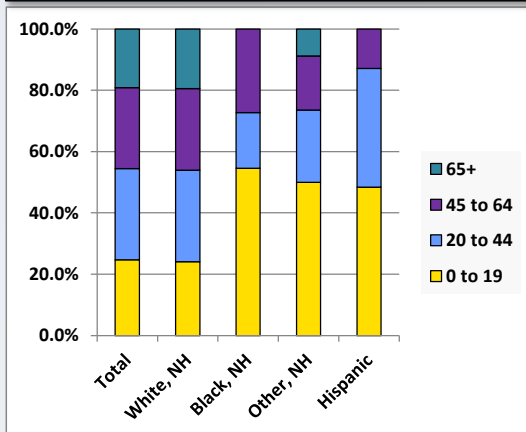
Black, Non-Hispanic



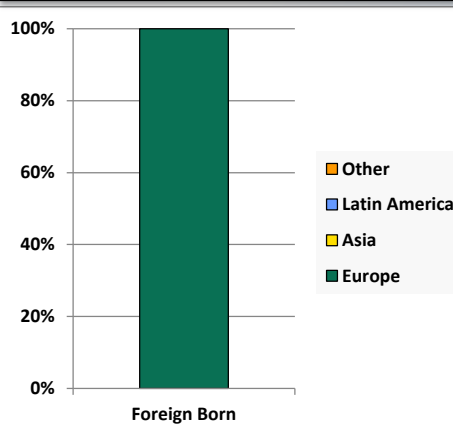
Hispanic



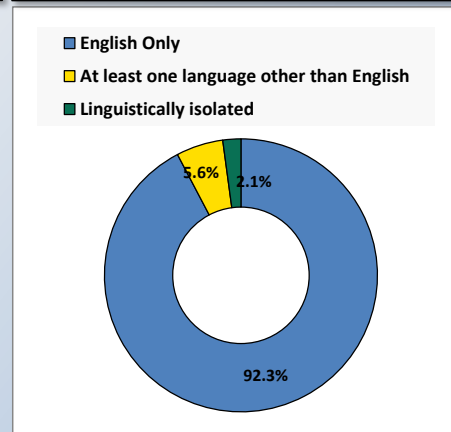
Age by Race and Ethnicity, 2010



Foreign Born, 2010



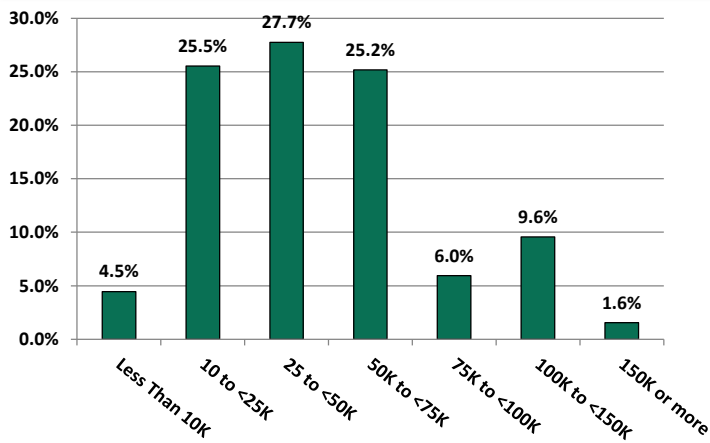
Household Language, 2010



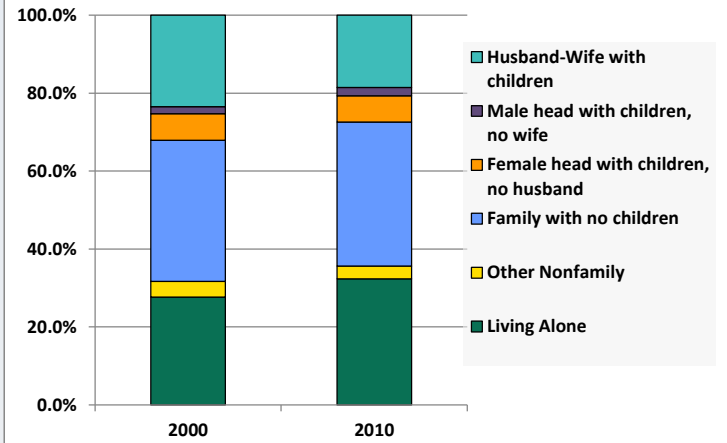
Demographic Profile

Jane & Annetta Herr Memorial Library

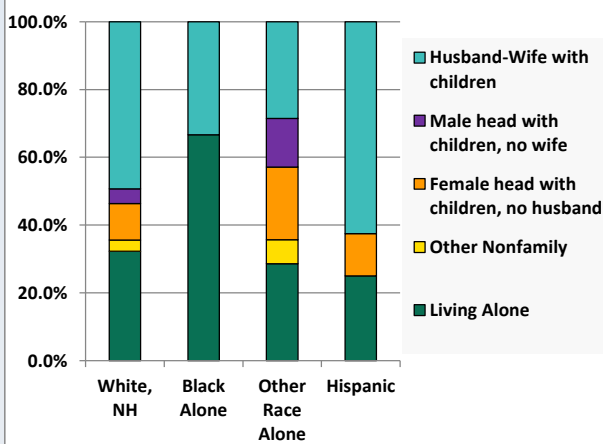
Household Income Distribution, 2008-2012



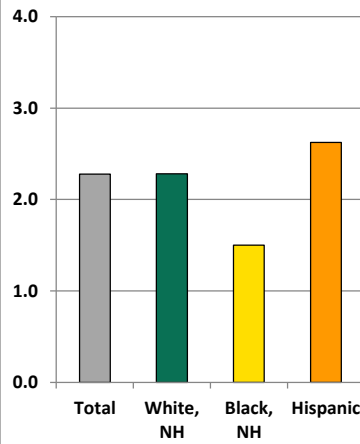
Household Type, 2000 and 2010



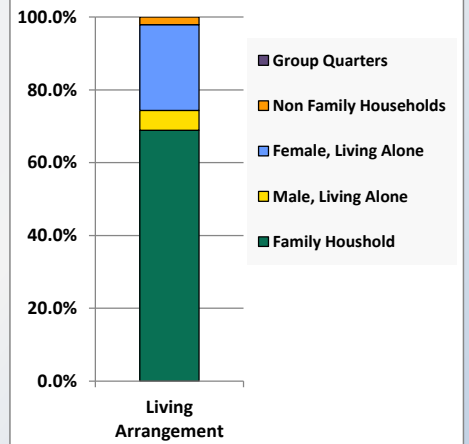
Household Type by Race/Ethnicity, 2010



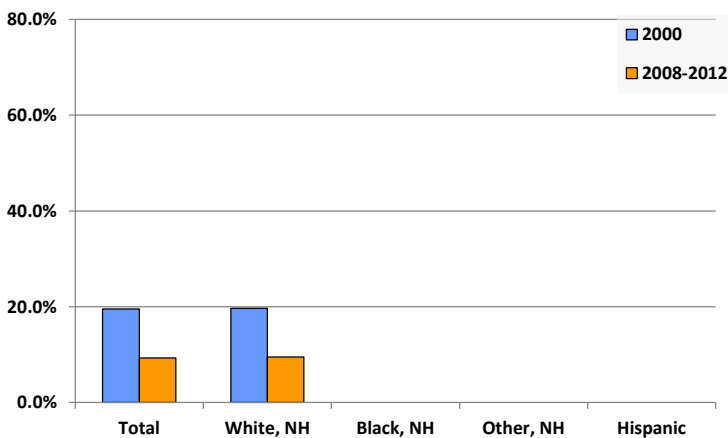
Average Household Size, 2010



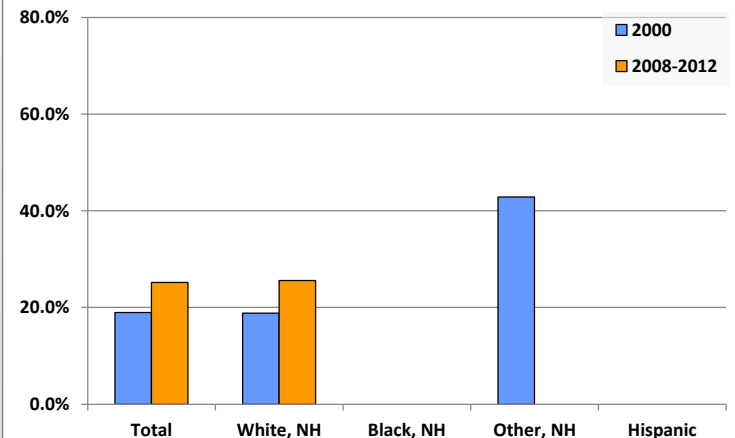
Living Arrangements 65+, 2008-2012



Percent of Adults that Did Not Complete High School



Percent of Adults Who Attained a Bachelor's Degree or Higher



Reference Data

Jane & Annetta Herr Memorial Library

	Total Population	White, Non- Hispanic	Black, Non- Hispanic	Other, Non- Hispanic	Detail for Other, Non-Hispanic					Hispanic or Latino
					AIAN	Asian	NHOPI	Some Other Race	Two or More Races	
A. Total Population										
2000 Total	3,594	3,514	16	37	3	8	1	0	25	27
2000 pct of Total	100.0%	97.8%	0.4%	1.0%	0.1%	0.2%	0.0%	0.0%	0.7%	0.8%
2010 Total	3,540	3,453	22	34	1	9	3	2	19	31
2010 pct of Total	100.0%	97.5%	0.6%	1.0%	0.0%	0.3%	0.1%	0.1%	0.5%	0.9%
B. Population by Major Age Groups by Race and Ethnicity										
2000										
0-19	987	949	11	16	0	4	0	0	12	11
20-64	2,009	1,972	5	17	3	4	1	0	9	15
65+	598	593	0	4	0	0	0	0	4	1
85+	64	64	0	0	0	0	0	0	0	0
2010										
0-19	875	831	12	17	0	5	0	0	12	15
20-64	1,989	1,949	10	14	0	4	3	2	5	16
65+	676	673	0	3	1	0	0	0	2	0
85+	90	89	0	1	0	0	0	0	1	0
C. Age Mix for Each Racial and Ethnic Group										
2000										
0-19	27.5%	27.0%	68.8%	43.2%	0.0%	50.0%	0.0%	0.0%	48.0%	40.7%
20-64	55.9%	56.1%	31.3%	45.9%	100.0%	50.0%	100.0%	0.0%	36.0%	55.6%
65+	16.6%	16.9%	0.0%	10.8%	0.0%	0.0%	0.0%	0.0%	16.0%	3.7%
85+	1.8%	1.8%	0.0%	0.0%	0.0%	0.0%	0.0%	0.0%	0.0%	0.0%
2010										
0-19	24.7%	24.1%	54.5%	50.0%	0.0%	55.6%	0.0%	0.0%	63.2%	48.4%
20-64	56.2%	56.4%	45.5%	41.2%	0.0%	44.4%	100.0%	100.0%	26.3%	51.6%
65+	19.1%	19.5%	0.0%	8.8%	100.0%	0.0%	0.0%	0.0%	10.5%	0.0%
85+	2.5%	2.6%	0.0%	2.9%	0.0%	0.0%	0.0%	0.0%	5.3%	0.0%
D. Racial and Ethnic Composition of Each Age Group										
2000										
0-19	100.0%	96.1%	1.1%	1.6%	0.0%	0.4%	0.0%	0.0%	1.2%	1.1%
20-64	100.0%	98.2%	0.2%	0.8%	0.1%	0.2%	0.0%	0.0%	0.4%	0.7%
65+	100.0%	99.2%	0.0%	0.7%	0.0%	0.0%	0.0%	0.0%	0.7%	0.2%
85+	100.0%	100.0%	0.0%	0.0%	0.0%	0.0%	0.0%	0.0%	0.0%	0.0%
2010										
0-19	100.0%	95.0%	1.4%	1.9%	0.0%	0.6%	0.0%	0.0%	1.4%	1.7%
20-64	100.0%	98.0%	0.5%	0.7%	0.0%	0.2%	0.2%	0.1%	0.3%	0.8%
65+	100.0%	99.6%	0.0%	0.4%	0.1%	0.0%	0.0%	0.0%	0.3%	0.0%
85+	100.0%	98.9%	0.0%	1.1%	0.0%	0.0%	0.0%	0.0%	1.1%	0.0%
E. Population Growth										
2000-2010, Change										
0-19	-112	-118	1	1	0	1	0	0	0	4
20-64	-20	-23	5	-3	-3	0	2	2	-4	1
65+	78	80	0	-1	1	0	0	0	-2	-1
85+	26	25	0	1	0	0	0	0	1	0
Total	-54	-61	6	-3	-2	1	2	2	-6	4
2000-2010, Pct Change										
0-19	-11.3%	-12.4%	9.1%	6.3%	0.0%	25.0%	0.0%	0.0%	0.0%	36.4%
20-64	-1.0%	-1.2%	100.0%	-17.6%	-100.0%	0.0%	200.0%	0.0%	-44.4%	6.7%
65+	13.0%	13.5%	0.0%	-25.0%	0.0%	0.0%	0.0%	0.0%	-50.0%	-100.0%
85+	40.6%	39.1%	0.0%	0.0%	0.0%	0.0%	0.0%	0.0%	0.0%	0.0%
Total	-1.5%	-1.7%	37.5%	-8.1%	-66.7%	12.5%	200.0%	0.0%	-24.0%	14.8%

Source: Decennial Census 2010, 2000, American Community Survey 2008-2012

Prepared for the Pennsylvania State Library by The Pennsylvania State Data Center, 9/2014

Reference Data

Jane & Annetta Herr Memorial Library

	Total Population	White, Non- Hispanic	Black, Non- Hispanic	Other, Non- Hispanic	Detail for Other, Non-Hispanic					Hispanic or Latino
					AIAN	Asian	NHOPI	Some Other	Two or More	
								Race	Races	
F. Population by Library-Defined Age Groups, 2010										
0-5	256	245	1	5	0	1	0	0	4	5
6-10	226	217	3	3	0	1	0	0	2	3
11-13	108	101	3	3	0	0	0	0	3	1
14-18	252	236	5	5	0	2	0	0	3	6
19-32	570	556	3	5	0	1	1	2	1	6
33-45	575	562	1	5	0	2	0	0	3	7
46-64	877	863	6	5	0	2	2	0	1	3
65-84	586	584	0	2	1	0	0	0	1	0
85+	90	89	0	1	0	0	0	0	1	0
Total	3,540	3,453	22	34	1	9	3	2	19	31
G. Population by 5-Year Age Cohorts, 2010										
0-4	220	211	1	3	0	0	0	0	3	5
5-9	217	207	2	5	0	2	0	0	3	3
10-14	205	195	5	4	0	0	0	0	4	1
15-19	233	218	4	5	0	3	0	0	2	6
20-24	211	207	1	2	0	0	0	1	1	1
25-29	232	225	2	2	0	0	1	1	0	3
30-34	182	180	0	0	0	0	0	0	0	2
35-39	198	194	1	1	0	0	0	0	1	2
40-44	231	224	0	3	0	2	0	0	1	4
45-49	247	241	3	1	0	0	0	0	1	2
50-54	259	252	3	2	0	1	0	0	1	2
55-59	221	219	0	2	0	1	1	0	0	0
60-64	208	207	0	1	0	0	1	0	0	0
65-69	186	184	0	2	1	0	0	0	1	0
70-74	137	137	0	0	0	0	0	0	0	0
75-79	150	150	0	0	0	0	0	0	0	0
80-84	113	113	0	0	0	0	0	0	0	0
85-89	64	63	0	1	0	0	0	0	1	0
90-94	21	21	0	0	0	0	0	0	0	0
95-99	4	4	0	0	0	0	0	0	0	0
100+	1	1	0	0	0	0	0	0	0	0
Total	3,540	3,453	22	34	1	9	3	2	19	31

Source: Decennial Census 2010, 2000, American Community Survey 2008-2012
 Prepared for the Pennsylvania State Library by The Pennsylvania State Data Center, 9/2014

Reference Data

Jane & Annetta Herr Memorial Library

H. Income Distribution, 2008-2012

Range (in thousands)	Households	Pct of Total
<\$10K	69	4.5%
\$10K to <\$25K	395	25.5%
\$25K to <\$50K	429	27.7%
\$50K to <\$75K	389	25.2%
\$75K to <\$100K	92	6.0%
\$100K to <\$150K	148	9.6%
\$150K+	24	1.6%

I. Household Type, 2010

Household Type	2000	2000pct	2010	2010pct
Total Households	1,506	100.0%	1,554	100.0%
Family Households	1,029	68.3%	1,000	64.4%
Husband-wife, no children w/children	354	23.5%	288	18.5%
Female head, no husband, w/ children	102	6.8%	104	6.7%
Male head, no wife, w/ children	27	1.8%	34	2.2%
Without children	546	36.3%	574	36.9%
Nonfamily households	477	31.7%	554	35.6%
Living alone	417	27.7%	503	32.4%
Other nonfamily	60	4.0%	51	3.3%

J. Household Type by Race and Ethnicity, 2008-2012

Household Type	White, NH	Black, NH	Other, NH	Hispanic
Total Households	1,529	6	14	8
Husband wife family	49.3%	33.3%	28.6%	62.5%
Family with male head, no wife	4.3%	0.0%	14.3%	0.0%
family with female head, no husband	10.8%	0.0%	21.4%	12.5%
Living alone	32.3%	66.7%	28.6%	25.0%
Other nonfamily	3.3%	0.0%	7.1%	0.0%

K. Poverty, 2008-2012

Families	Poverty	PA
All families	3.5%	9.1%
Families w/ related children	4.7%	15.3%
Female householder, no husband present	22.1%	28.8%
Female householder, no husband present, w/ related children	56.8%	39.2%
All people	7.7%	13.1%
Under 18 years	10.5%	18.4%
18 to 64 years	7.9%	12.3%
65 years and over	3.5%	8.4%

L. Educational Attainment by Race and Ethnicity, 2008-2012

Education Level	White, NH	Black	Other	Hispanic	Total
Population 25 years and over	2,372	14	25	0	2,411
Less than high school	9.5%	0.0%	0%	0.0%	9.3%
High school graduate (includes equivalency	43.3%	0.0%	100%	0.0%	43.6%
Some college or associates degree	21.7%	100.0%	0%	0.0%	21.9%
Bachelors degree or higher	25.6%	0.0%	0%	0.0%	25.2%

M. Occupation, 2008-2012

Occupation	Estimate	Percent
Civilian population age 16 years and over	1,492	100.0%
Management, professional, and related occupations	591	39.6%
Service occupations	288	19.3%
Sales and office occupations	287	19.2%
Farming, fishing, and forestry occupations	14	0.9%
Construction, extraction, maintenance, and repair occupations	81	5.4%
Production, transportation, and material moving occupations	231	15.5%

N. Class of Worker, 2008-2012

Occupation	Estimate	Percent
Civilian population age 16 years and over	1,492	100.0%
Private, for profit, wage and salary employee	939	62.9%
Private, not for profit, wage and salary employee	200	13.4%
Private, for profit, wage and salary self-employed in own business	18	1.2%
Government workers	292	19.6%
Self-employed in own not incorporated business	43	2.9%
Unpaid family workers in family business	0	0.0%