

## Demographic Profile Jefferson Hills Public Library

**Population Growth:** The total population of the Jefferson Hills Public Library service area increased by 9.9 percent over the past decade to 10,619; this growth rate was higher than the statewide rate of 3.4 percent.

**Age and Sex:** In 2010, the Jefferson Hills Public Library service area had a total population of 10,619 - 5,162 males (48.6 percent) and 5,457 females (51.4 percent). The age structure of the population in 2010 was as follows: 23.0 percent of the population was under 20 years old, 60.4 percent was 20 to 64 years old and 16.6 percent was 65 years or older.

**Race and Ethnicity:** For people reporting one race alone, not of Hispanic ethnicity, 95.3 percent were White; 1.8 percent were Black or African American; 2.0 percent were Other Race Alone.<sup>1</sup> A total of 96 or .9 percent of the population were Hispanic.<sup>2</sup>

**Households:** In 2010, there were 4,285 households in the Jefferson Hills Public Library service area. The average household size was 2.45 people. Families made up 69.5 percent of the households. This figure includes both families with (27.5 percent) and without (42.1 percent) children. Of families with children less than 18 years old, 22.6 percent were married-couple families, 3.2 percent were female householder families with no husband present, and the remaining (1.7 percent) were male-headed households with no wife present.

**Education:** The educational attainment of the population 25 years and over was higher in the Jefferson Hills Public Library service area than in Pennsylvania. During the period 2008-2012, 38.5 percent of residents had earned a Bachelor's degree or higher, compared with 27.0 percent statewide. A total of 403 or 5.2 percent had not completed high school, compared with 11.7 percent for the commonwealth as a whole.

**Income and Poverty:** Households with incomes of \$100,000 or More (33.5 percent) made up the largest percent of households in the Jefferson Hills Public Library service area in 2008-2012. For comparison, 20.8 percent of commonwealth households were in this range during the period.

In 2008-2012, the overall poverty rate for the Jefferson Hills Public Library service area was lower than Pennsylvania (4.3 percent compared to 13.1 percent). The poverty rate for the population under 18 years of age was 3.5 percent, compared with 5.0 percent of people 18 to 64 years and 2.9 percent for those aged 65 years and over. A total of 43 or 1.4 percent of all families had incomes below poverty level. In 2008-2012, 2.1 percent of families with related children and 16.0 percent of families with a female householder and no husband with related children present had incomes below the poverty level.

**Class of Worker and Occupation:** In 2008-2012, 83.1 percent of the workforce was private wage and salary workers; 11.2 percent were federal, state, or local government workers; and 5.5 percent were self-employed in their own (not incorporated) business.

The top occupation group for the civilian employed population 16 years and over in the Jefferson Hills Public Library service area in 2008-2012 was Management, business, science, and arts (36.5 percent).

---

<sup>1</sup> Other race includes those who identified themselves as American Indian/Alaska Native, Asian, Native Hawaiian/Other Pacific Islander, Some Other Race and Two or More Races on the 2010 Census form.

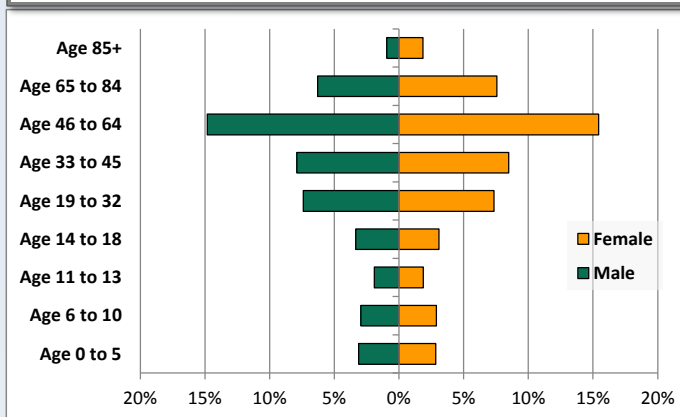
<sup>2</sup> People of Hispanic origin may be of any race.

# Demographic Profile

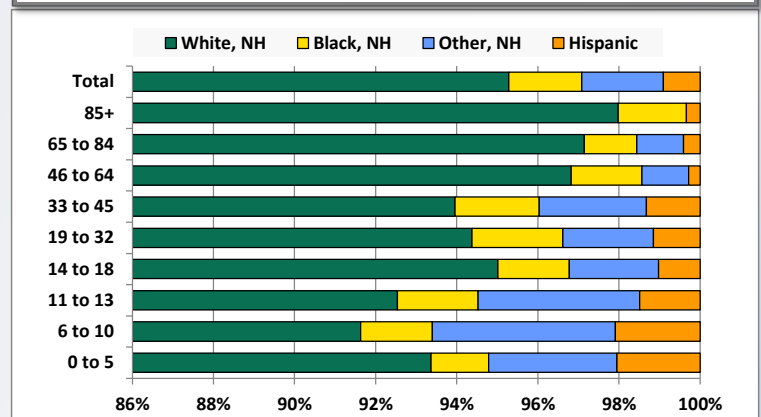
Jefferson Hills Public Library

Key Indicators		
	2000	2010
<b>Population Growth</b>		
Total Population	9,666	10,619
10-Year Growth	N/A	9.9%
<b>Diversity</b>		
White Alone, Non-Hispanic	96.3%	95.3%
Black Alone, Non-Hispanic	1.3%	1.8%
Other Race Alone, Non-Hispanic	1.7%	2.0%
Percent Hispanic	0.7%	0.9%
<b>Aging</b>		
Percent 65 Years and Over	16.8%	16.6%
<b>Households</b>		
Percent Married Couple with Own Children	27.0%	22.6%
Percent Living Alone	24.7%	25.4%

Population by Library-Defined Age Group, 2010



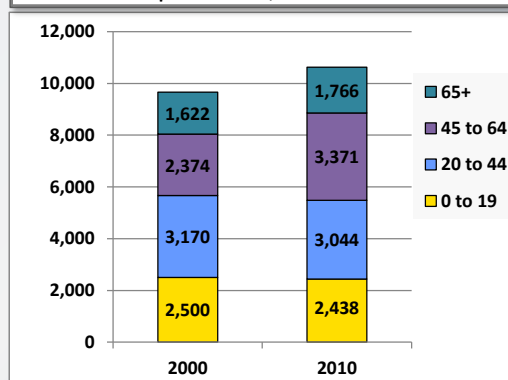
Race/Ethnicity by Library-Defined Age Group, 2010



Population Growth by Library-Defined Age Group, 2000 to 2010

Age Group	2010	Change	
		Numeric	Percent
Total	10,619	953	9.9%
85+	297	119	66.9%
65 to 84	1,469	25	1.7%
46 to 64	3,212	1,017	46.3%
33 to 45	1,738	-435	-20.0%
19 to 32	1,565	318	25.5%
14 to 18	682	-19	-2.7%
11 to 13	402	-60	-13.0%
6 to 10	621	-45	-6.8%
0 to 5	633	33	5.5%

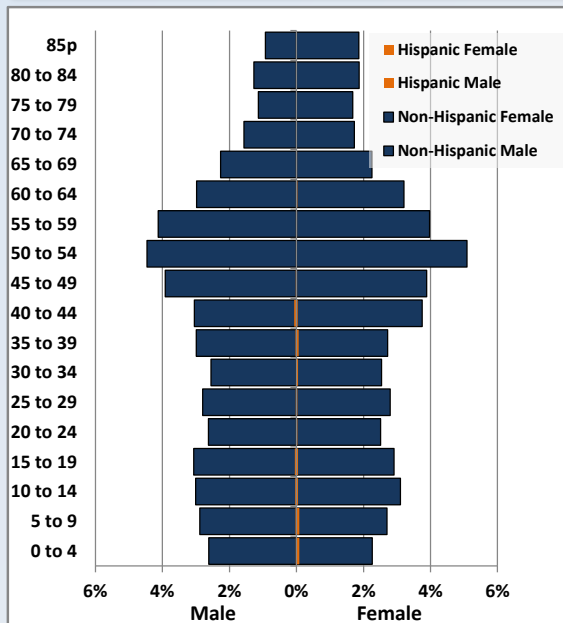
Population Total, 2000 and 2010



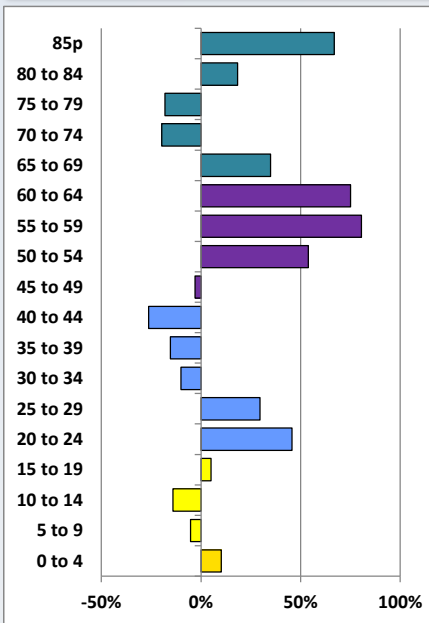
# Demographic Profile

Jefferson Hills Public Library

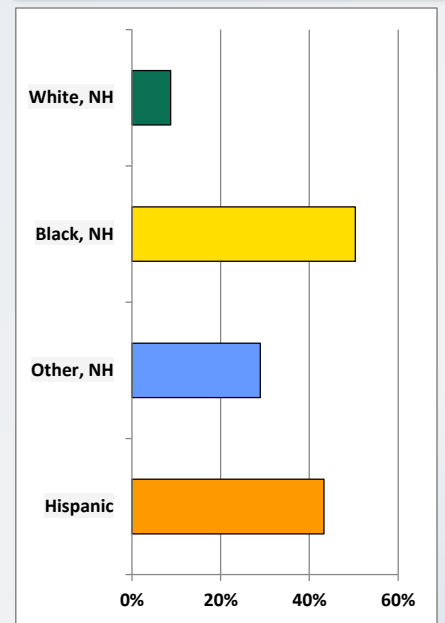
Population by 5-Year Age Cohorts



Pop Change by Age, 2000 to 2010

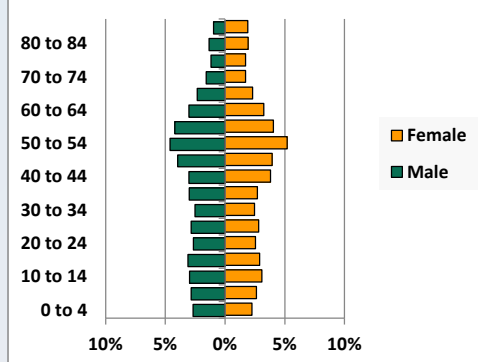


Pop Change by Race/Ethnicity, 2000 to 2010

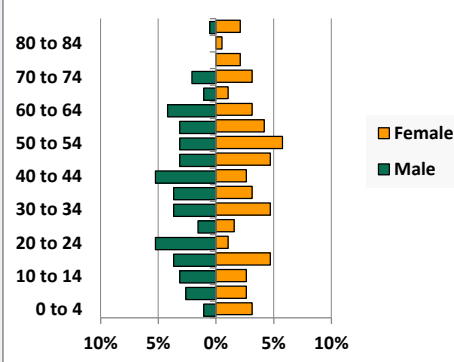


Population by Age, Race and Ethnicity 2010

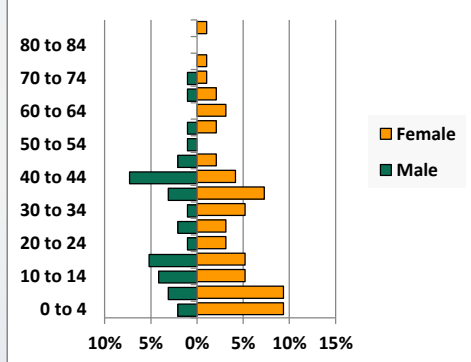
White, Not Hispanic



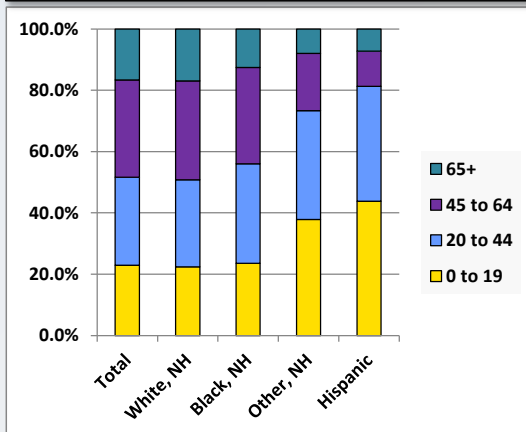
Black, Non-Hispanic



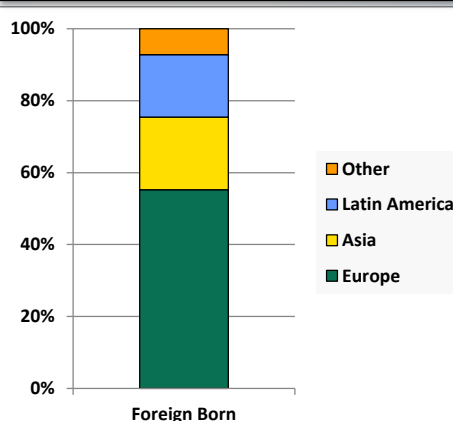
Hispanic



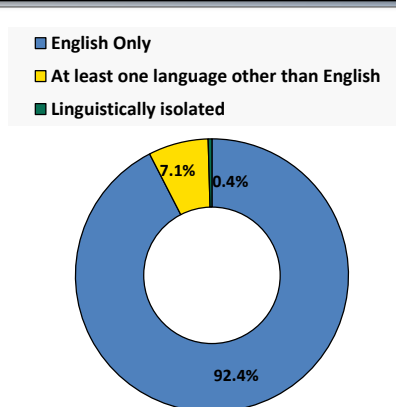
Age by Race and Ethnicity, 2010



Foreign Born, 2010



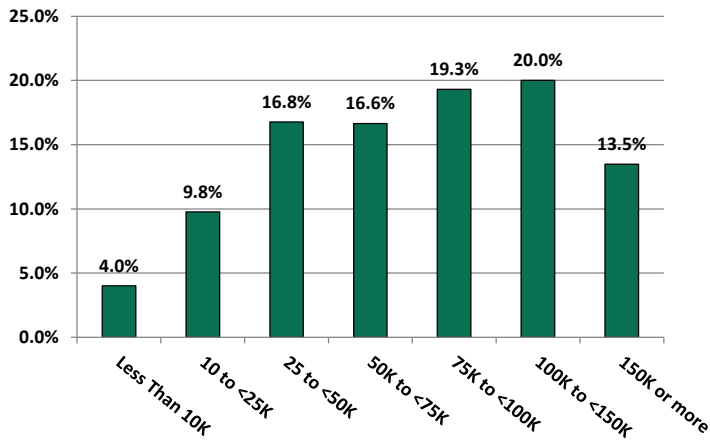
Household Language, 2010



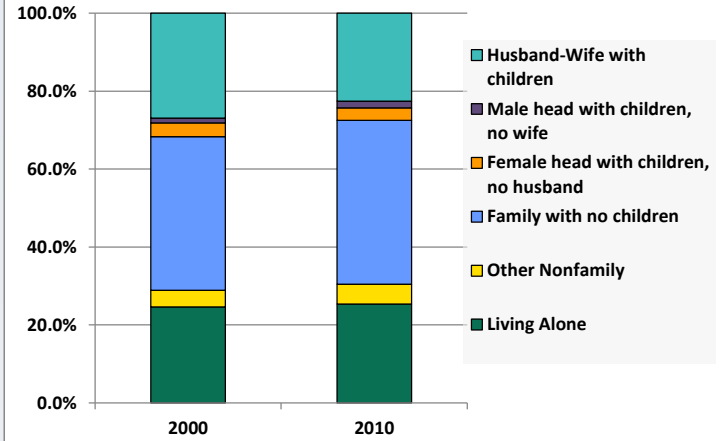
# Demographic Profile

Jefferson Hills Public Library

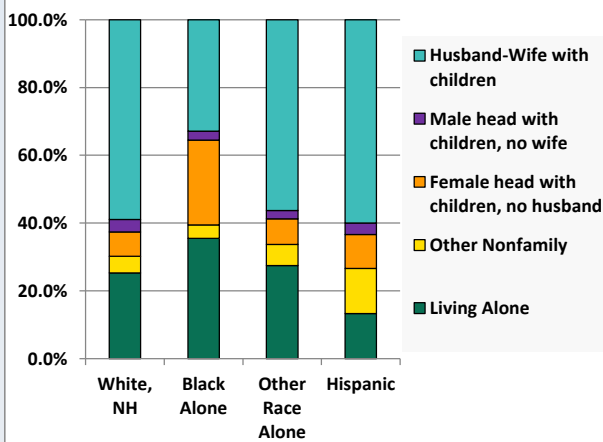
Household Income Distribution, 2008-2012



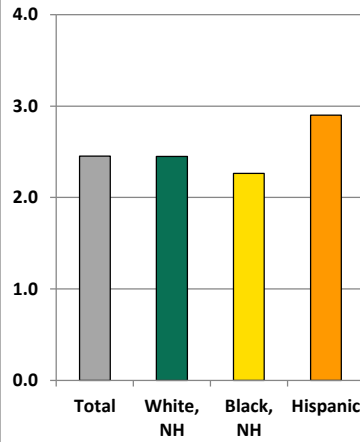
Household Type, 2000 and 2010



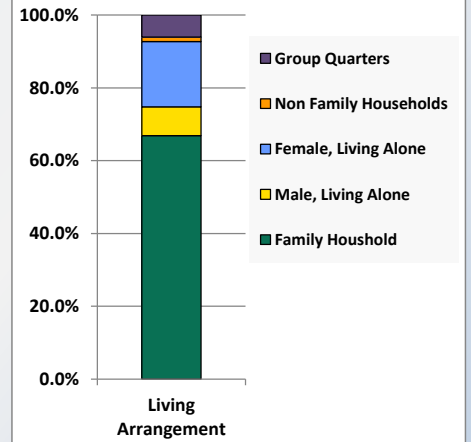
Household Type by Race/Ethnicity, 2010



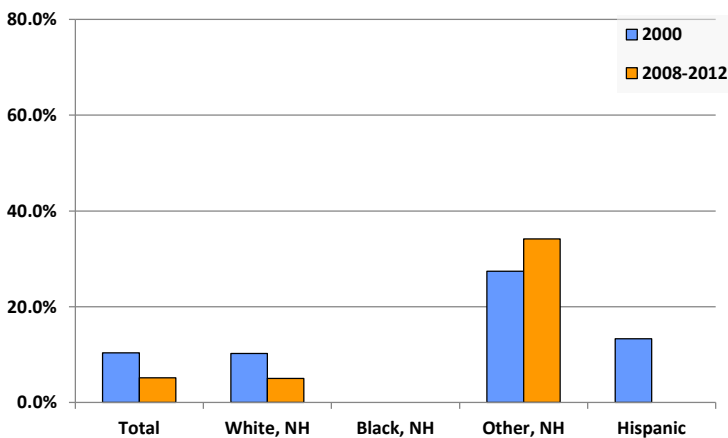
Average Household Size, 2010



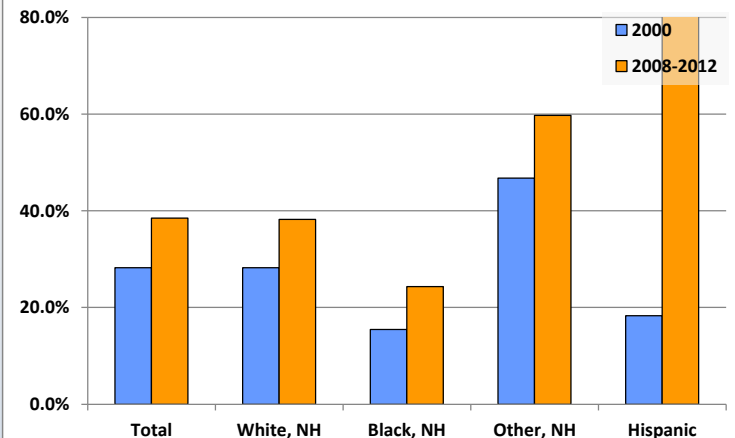
Living Arrangements 65+, 2008-2012



Percent of Adults that Did Not Complete High School



Percent of Adults Who Attained a Bachelor's Degree or Higher



# Reference Data

## Jefferson Hills Public Library

					Detail for Other, Non-Hispanic					
	Total Population	White, Non- Hispanic	Black, Non- Hispanic	Other, Non- Hispanic	AIAN	Asian	NHOPI	Some Other	Two or More	Hispanic or
								Race	Races	Latino
A. Total Population										
2000 Total	9,666	9,306	127	166	11	105	0	0	50	67
2000 pct of Total	100.0%	96.3%	1.3%	1.7%	0.1%	1.1%	0.0%	0.0%	0.5%	0.7%
2010 Total	10,619	10,118	191	214	9	143	0	0	62	96
2010 pct of Total	100.0%	95.3%	1.8%	2.0%	0.1%	1.3%	0.0%	0.0%	0.6%	0.9%
B. Population by Major Age Groups by Race and Ethnicity										
2000										
0-19	2,500	2,389	30	54	2	24	0	0	28	27
20-64	5,544	5,317	85	103	8	76	0	0	19	39
65+	1,622	1,600	12	9	1	5	0	0	3	1
85+	178	177	0	1	0	1	0	0	0	0
2010										
0-19	2,438	2,270	45	81	5	39	0	0	37	42
20-64	6,415	6,130	122	116	3	90	0	0	23	47
65+	1,766	1,718	24	17	1	14	0	0	2	7
85+	297	291	5	0	0	0	0	0	0	1
C. Age Mix for Each Racial and Ethnic Group										
2000										
0-19	25.9%	25.7%	23.6%	32.5%	18.2%	22.9%	0.0%	0.0%	56.0%	40.3%
20-64	57.4%	57.1%	66.9%	62.0%	72.7%	72.4%	0.0%	0.0%	38.0%	58.2%
65+	16.8%	17.2%	9.4%	5.4%	9.1%	4.8%	0.0%	0.0%	6.0%	1.5%
85+	1.8%	1.9%	0.0%	0.6%	0.0%	1.0%	0.0%	0.0%	0.0%	0.0%
2010										
0-19	23.0%	22.4%	23.6%	37.9%	55.6%	27.3%	0.0%	0.0%	59.7%	43.8%
20-64	60.4%	60.6%	63.9%	54.2%	33.3%	62.9%	0.0%	0.0%	37.1%	49.0%
65+	16.6%	17.0%	12.6%	7.9%	11.1%	9.8%	0.0%	0.0%	3.2%	7.3%
85+	2.8%	2.9%	2.6%	0.0%	0.0%	0.0%	0.0%	0.0%	0.0%	1.0%
D. Racial and Ethnic Composition of Each Age Group										
2000										
0-19	100.0%	95.6%	1.2%	2.2%	0.1%	1.0%	0.0%	0.0%	1.1%	1.1%
20-64	100.0%	95.9%	1.5%	1.9%	0.1%	1.4%	0.0%	0.0%	0.3%	0.7%
65+	100.0%	98.6%	0.7%	0.6%	0.1%	0.3%	0.0%	0.0%	0.2%	0.1%
85+	100.0%	99.4%	0.0%	0.6%	0.0%	0.6%	0.0%	0.0%	0.0%	0.0%
2010										
0-19	100.0%	93.1%	1.8%	3.3%	0.2%	1.6%	0.0%	0.0%	1.5%	1.7%
20-64	100.0%	95.6%	1.9%	1.8%	0.0%	1.4%	0.0%	0.0%	0.4%	0.7%
65+	100.0%	97.3%	1.4%	1.0%	0.1%	0.8%	0.0%	0.0%	0.1%	0.4%
85+	100.0%	98.0%	1.7%	0.0%	0.0%	0.0%	0.0%	0.0%	0.0%	0.3%
E. Population Growth										
2000-2010, Change										
0-19	-62	-119	15	27	3	15	0	0	9	15
20-64	871	813	37	13	-5	14	0	0	4	8
65+	144	118	12	8	0	9	0	0	-1	6
85+	119	114	5	-1	0	-1	0	0	0	1
Total	953	812	64	48	-2	38	0	0	12	29
2000-2010, Pct Change										
0-19	-2.5%	-5.0%	50.0%	50.0%	150.0%	62.5%	0.0%	0.0%	32.1%	55.6%
20-64	15.7%	15.3%	43.5%	12.6%	-62.5%	18.4%	0.0%	0.0%	21.1%	20.5%
65+	8.9%	7.4%	100.0%	88.9%	0.0%	180.0%	0.0%	0.0%	-33.3%	600.0%
85+	66.9%	64.4%	0.0%	-100.0%	0.0%	-100.0%	0.0%	0.0%	0.0%	0.0%
Total	9.9%	8.7%	50.4%	28.9%	-18.2%	36.2%	0.0%	0.0%	24.0%	43.3%

Source: Decennial Census 2010, 2000, American Community Survey 2008-2012

Prepared for the Pennsylvania State Library by The Pennsylvania State Data Center, 9/2014

# Reference Data

## Jefferson Hills Public Library

					Detail for Other, Non-Hispanic					Hispanic or Latino
	Total Population	White, Non-Hispanic	Black, Non-Hispanic	Other, Non-Hispanic	AIAN	Asian	NHOPI	Some Other	Two or More	
								Race	Races	
F. Population by Library-Defined Age Groups, 2010										
0-5	633	591	9	20	0	9	0	0	11	13
6-10	621	569	11	28	0	12	0	0	16	13
11-13	402	372	8	16	2	8	0	0	6	6
14-18	682	648	12	15	3	9	0	0	3	7
19-32	1,565	1,477	35	35	0	27	0	0	8	18
33-45	1,738	1,633	36	46	2	39	0	0	5	23
46-64	3,212	3,110	56	37	1	25	0	0	11	9
65-84	1,469	1,427	19	17	1	14	0	0	2	6
85+	297	291	5	0	0	0	0	0	0	1
Total	10,619	10,118	191	214	9	143	0	0	62	96
G. Population by 5-Year Age Cohorts, 2010										
0-4	529	497	8	13	0	7	0	0	6	11
5-9	606	554	10	30	0	13	0	0	17	12
10-14	658	612	11	26	2	14	0	0	10	9
15-19	645	607	16	12	3	5	0	0	4	10
20-24	549	526	12	7	0	5	0	0	2	4
25-29	599	572	6	16	0	12	0	0	4	5
30-34	546	504	16	20	0	18	0	0	2	6
35-39	617	576	13	18	1	15	0	0	2	10
40-44	733	692	15	15	1	12	0	0	2	11
45-49	833	799	15	15	1	11	0	0	3	4
50-54	1,015	992	17	5	0	2	0	0	3	1
55-59	863	835	14	11	0	8	0	0	3	3
60-64	660	634	14	9	0	7	0	0	2	3
65-69	483	469	4	7	0	6	0	0	1	3
70-74	352	335	10	5	1	3	0	0	1	2
75-79	300	293	4	2	0	2	0	0	0	1
80-84	334	330	1	3	0	3	0	0	0	0
85-89	199	197	1	0	0	0	0	0	0	1
90-94	77	74	3	0	0	0	0	0	0	0
95-99	18	17	1	0	0	0	0	0	0	0
100+	3	3	0	0	0	0	0	0	0	0
Total	10,619	10,118	191	214	9	143	0	0	62	96

Source: Decennial Census 2010, 2000, American Community Survey 2008-2012  
 Prepared for the Pennsylvania State Library by The Pennsylvania State Data Center, 9/2014

# Reference Data

## Jefferson Hills Public Library

### H. Income Distribution, 2008-2012

Range (in thousands)	Households	Pct of Total
<\$10K	171	4.0%
\$10K to <\$25K	418	9.8%
\$25K to <\$50K	717	16.8%
\$50K to <\$75K	712	16.6%
\$75K to <\$100K	826	19.3%
\$100K to <\$150K	856	20.0%
\$150K+	577	13.5%

### I. Household Type, 2010

Household Type	2000	2000pct	2010	2010pct
Total Households	3,781	100.0%	4,285	100.0%
Family Households	2,688	71.1%	2,980	69.5%
Husband-wife, no children w/children	1,019	27.0%	968	22.6%
Female head, no husband, w/ children	134	3.5%	136	3.2%
Male head, no wife, w/ children	45	1.2%	74	1.7%
Without children	1,490	39.4%	1,802	42.1%
Nonfamily households	1,093	28.9%	1,305	30.5%
Living alone	933	24.7%	1,089	25.4%
Other nonfamily	160	4.2%	216	5.0%

### J. Household Type by Race and Ethnicity, 2008-2012

Household Type	White, NH	Black, NH	Other, NH	Hispanic
Total Households	4,108	76	80	30
Husband wife family	58.9%	32.9%	56.3%	60.0%
Family with male head, no wife	3.7%	2.6%	2.5%	3.3%
family with female head, no husband	7.1%	25.0%	7.5%	10.0%
Living alone	25.3%	35.5%	27.5%	13.3%
Other nonfamily	5.0%	3.9%	6.3%	13.3%

### K. Poverty, 2008-2012

Families	Poverty	PA
All families	1.4%	9.1%
Families w/ related children	2.1%	15.3%
Female householder, no husband present	8.6%	28.8%
Female householder, no husband present, w/ related children	16.0%	39.2%
All people	4.3%	13.1%
Under 18 years	3.5%	18.4%
18 to 64 years	5.0%	12.3%
65 years and over	2.9%	8.4%

### L. Educational Attainment by Race and Ethnicity, 2008-2012

Education Level	White, NH	Black	Other	Hispanic	Total
Population 25 years and over	7,451	181	82	54	7,763
Less than high school	5.0%	0.0%	34%	0.0%	5.2%
High school graduate (includes equivalency)	31.1%	44.2%	0%	0.0%	30.9%
Some college or associates degree	25.7%	31.5%	6%	9.3%	25.4%
Bachelors degree or higher	38.2%	24.3%	60%	90.7%	38.5%

### M. Occupation, 2008-2012

Occupation	Estimate	Percent
Civilian population age 16 years and over	5,628	100.0%
Management, professional, and related occupations	2,055	36.5%
Service occupations	832	14.8%
Sales and office occupations	1,653	29.4%
Farming, fishing, and forestry occupations	0	0.0%
Construction, extraction, maintenance, and repair occupations	575	10.2%
Production, transportation, and material moving occupations	513	9.1%

### N. Class of Worker, 2008-2012

Occupation	Estimate	Percent
Civilian population age 16 years and over	5,628	100.0%
Private, for profit, wage and salary employee	3,827	68.0%
Private, not for profit, wage and salary employee	658	11.7%
Private, for profit, wage and salary self-employed in own business	192	3.4%
Government workers	633	11.2%
Self-employed in own not incorporated business	310	5.5%
Unpaid family workers in family business	8	0.1%