

Demographic Profile Jenkintown Library

Population Growth: The total population of the Jenkintown Library service area decreased by -1.3 percent over the past decade to 4,422; this decline rate was lower than the statewide rate of 3.4 percent.

Age and Sex: In 2010, the Jenkintown Library service area had a total population of 4,422 - 1,986 males (44.9 percent) and 2,436 females (55.1 percent). The age structure of the population in 2010 was as follows: 23.5 percent of the population was under 20 years old, 57.6 percent was 20 to 64 years old and 18.9 percent was 65 years or older.

Race and Ethnicity: For people reporting one race alone, not of Hispanic ethnicity, 87.7 percent were White; 5.6 percent were Black or African American; 3.7 percent were Other Race Alone.¹ A total of 134 or 3.0 percent of the population were Hispanic.²

Households: In 2010, there were 2,014 households in the Jenkintown Library service area. The average household size was 2.19 people. Families made up 53.8 percent of the households. This figure includes both families with (24.4 percent) and without (29.4 percent) children. Of families with children less than 18 years old, 18.3 percent were married-couple families, 4.8 percent were female householder families with no husband present, and the remaining (1.3 percent) were male-headed households with no wife present.

Education: The educational attainment of the population 25 years and over was higher in the Jenkintown Library service area than in Pennsylvania. During the period 2008-2012, 55.5 percent of residents had earned a Bachelor's degree or higher, compared with 27.0 percent statewide. A total of 106 or 3.3 percent had not completed high school, compared with 11.7 percent for the commonwealth as a whole.

Income and Poverty: Households with incomes of \$100,000 or More (32.7 percent) made up the largest percent of households in the Jenkintown Library service area in 2008-2012. For comparison, 20.8 percent of commonwealth households were in this range during the period.

In 2008-2012, the overall poverty rate for the Jenkintown Library service area was lower than Pennsylvania (6.2 percent compared to 13.1 percent). The poverty rate for the population under 18 years of age was 1.0 percent, compared with 7.3 percent of people 18 to 64 years and 8.6 percent for those aged 65 years and over. A total of 9 or .8 percent of all families had incomes below poverty level. In 2008-2012, 1.9 percent of families with related children and 11.5 percent of families with a female householder and no husband with related children present had incomes below the poverty level.

Class of Worker and Occupation: In 2008-2012, 80.7 percent of the workforce was private wage and salary workers; 13.0 percent were federal, state, or local government workers; and 6.3 percent were self-employed in their own (not incorporated) business.

The top occupation group for the civilian employed population 16 years and over in the Jenkintown Library service area in 2008-2012 was Management, business, science, and arts (62.2 percent).

¹ Other race includes those who identified themselves as American Indian/Alaska Native, Asian, Native Hawaiian/Other Pacific Islander, Some Other Race and Two or More Races on the 2010 Census form.

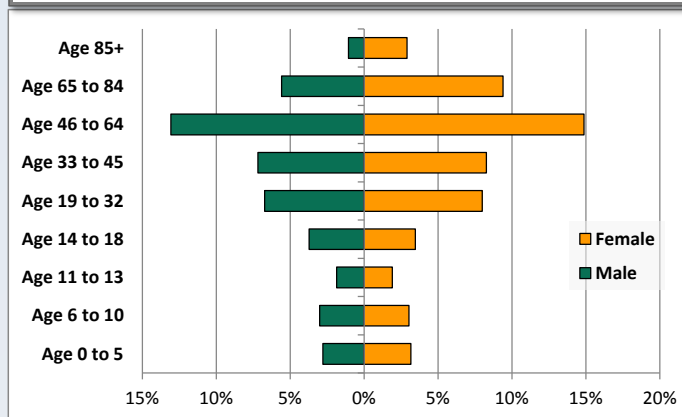
² People of Hispanic origin may be of any race.

Demographic Profile

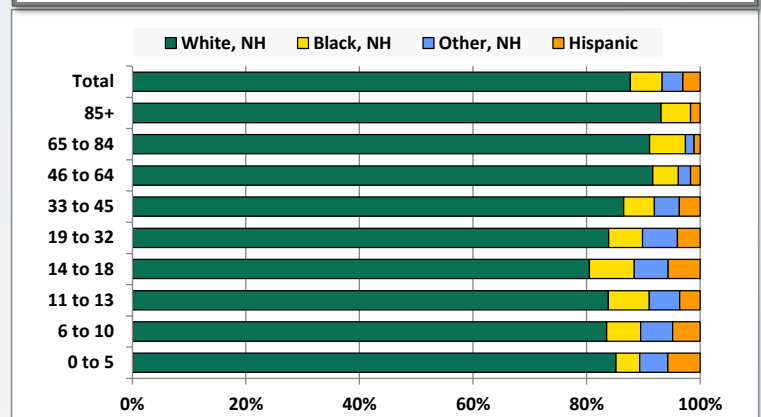
Jenkintown Library

Key Indicators		
	2000	2010
Population Growth		
Total Population	4,478	4,422
10-Year Growth	N/A	-1.3%
Diversity		
White Alone, Non-Hispanic	92.8%	87.7%
Black Alone, Non-Hispanic	4.0%	5.6%
Other Race Alone, Non-Hispanic	2.0%	3.7%
Percent Hispanic	1.3%	3.0%
Aging		
Percent 65 Years and Over	21.0%	18.9%
Households		
Percent Married Couple with Own Children	19.8%	18.3%
Percent Living Alone	40.6%	40.9%

Population by Library-Defined Age Group, 2010



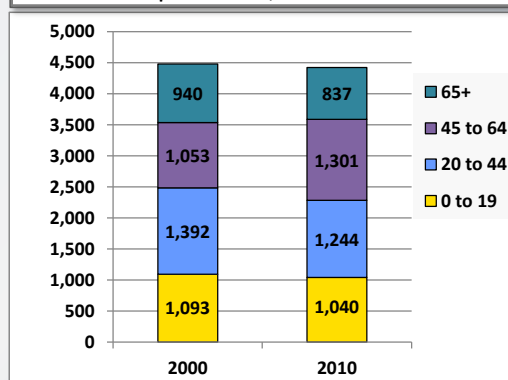
Race/Ethnicity by Library-Defined Age Group, 2010



Population Growth by Library-Defined Age Group, 2000 to 2010

Age Group	2010	Change	
		Numeric	Percent
Total	4,422	-56	-1.3%
85+	175	31	21.5%
65 to 84	662	-134	-16.8%
46 to 64	1,236	257	26.3%
33 to 45	683	-201	-22.7%
19 to 32	651	46	7.6%
14 to 18	318	23	7.8%
11 to 13	167	-35	-17.3%
6 to 10	267	-48	-15.2%
0 to 5	263	5	1.9%

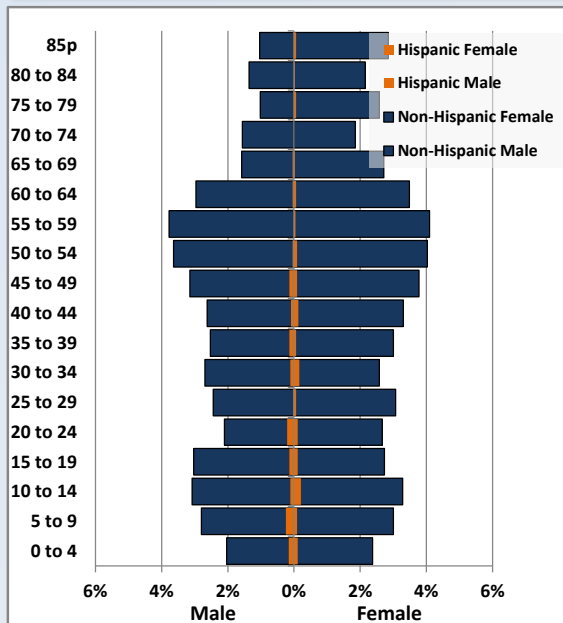
Population Total, 2000 and 2010



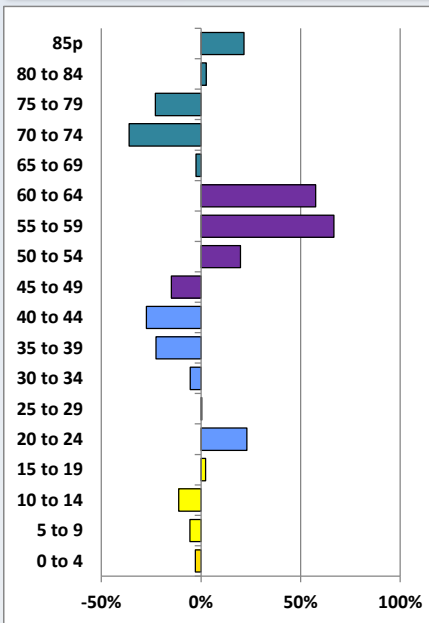
Demographic Profile

Jenkintown Library

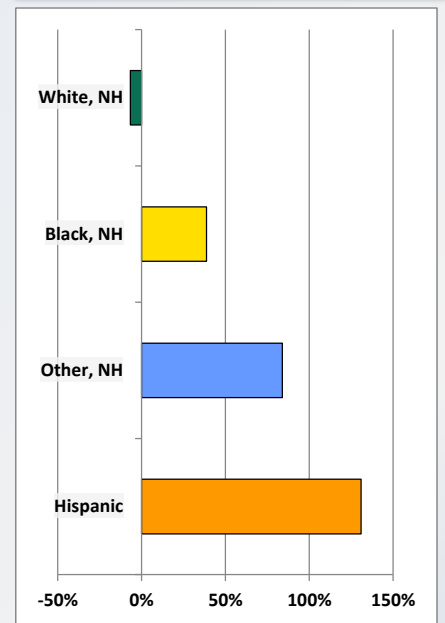
Population by 5-Year Age Cohorts



Pop Change by Age, 2000 to 2010

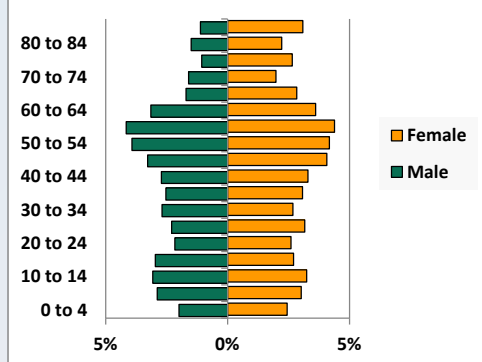


Pop Change by Race/Ethnicity, 2000 to 2010

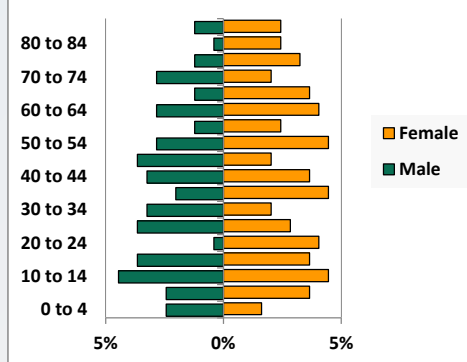


Population by Age, Race and Ethnicity 2010

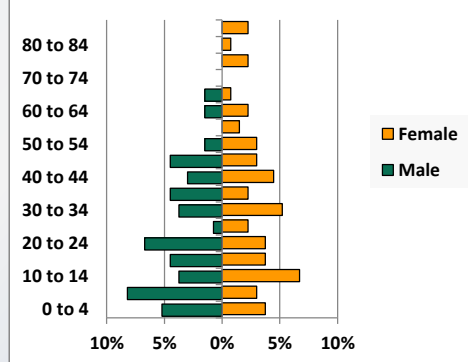
White, Not Hispanic



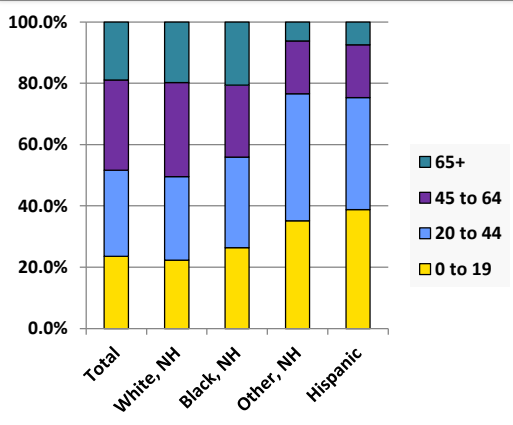
Black, Non-Hispanic



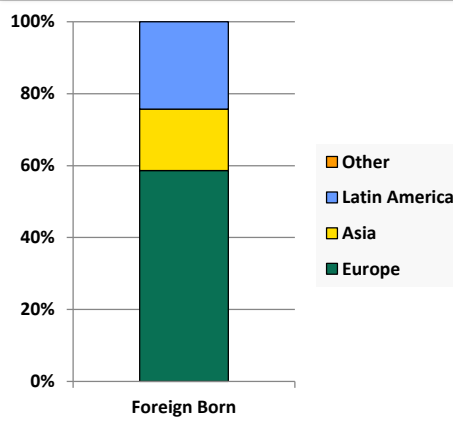
Hispanic



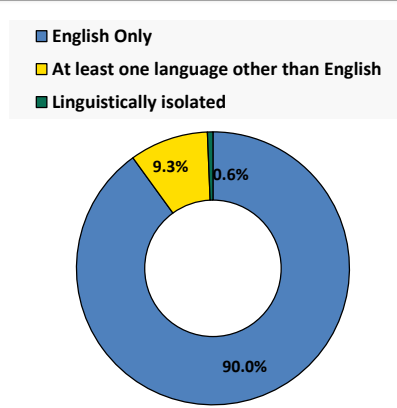
Age by Race and Ethnicity, 2010



Foreign Born, 2010



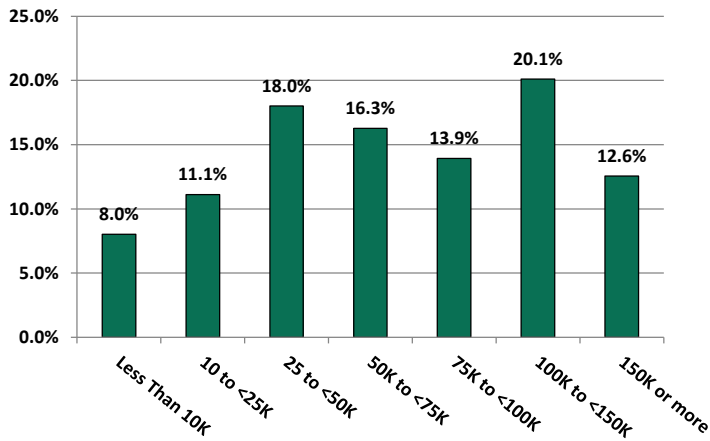
Household Language, 2010



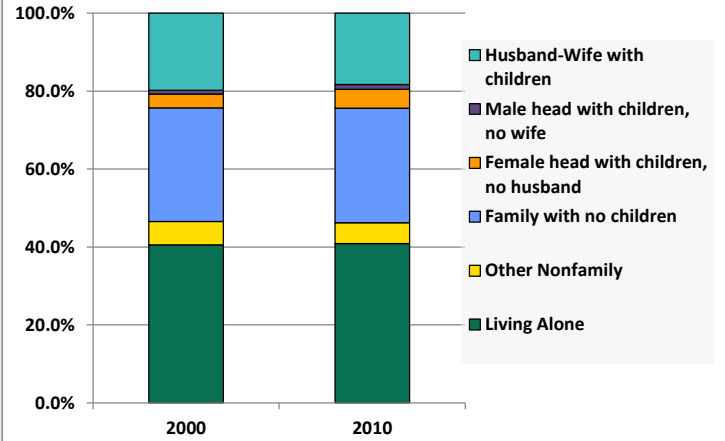
Demographic Profile

Jenkintown Library

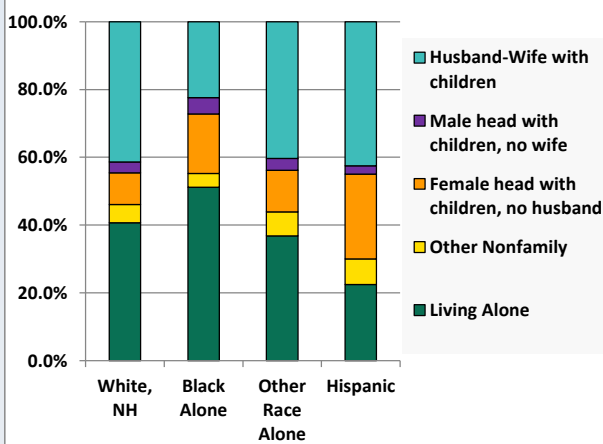
Household Income Distribution, 2008-2012



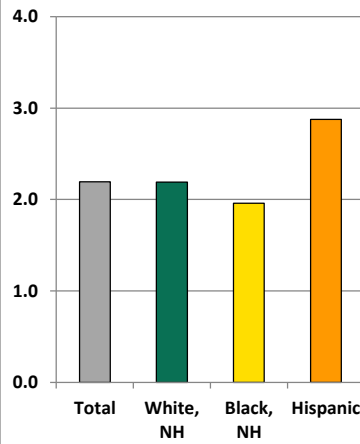
Household Type, 2000 and 2010



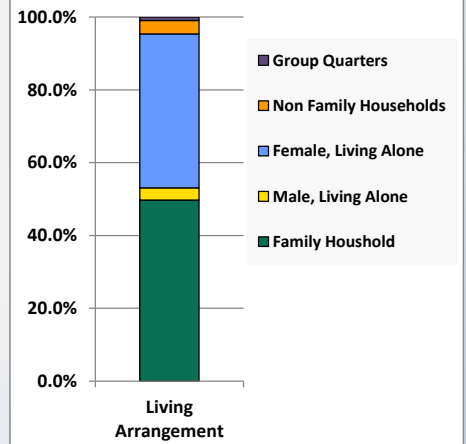
Household Type by Race/Ethnicity, 2010



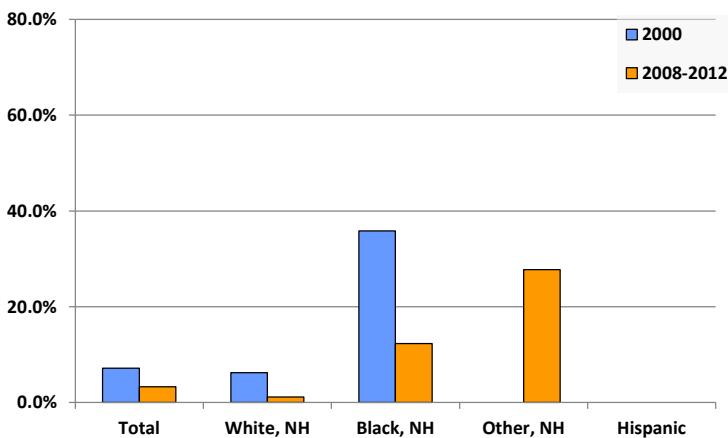
Average Household Size, 2010



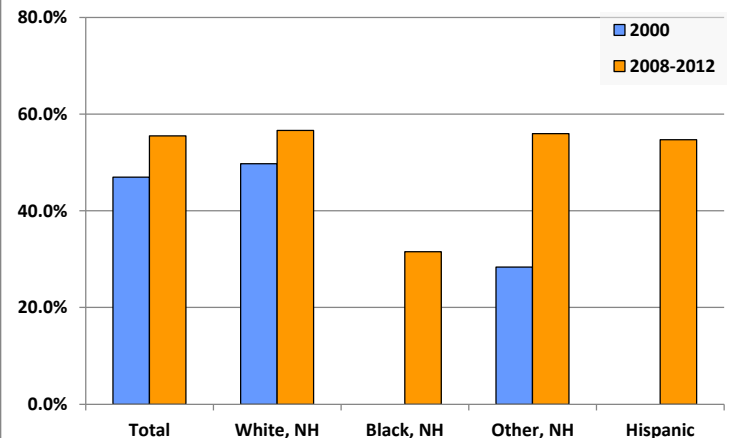
Living Arrangements 65+, 2008-2012



Percent of Adults that Did Not Complete High School



Percent of Adults Who Attained a Bachelor's Degree or Higher



Reference Data

Jenkintown Library

	Total Population	White, Non- Hispanic	Black, Non- Hispanic	Other, Non- Hispanic	Detail for Other, Non-Hispanic					Hispanic or Latino
					AIAN	Asian	NHOPI	Some Other Race	Two or More Races	
A. Total Population										
2000 Total	4,478	4,154	178	88	1	42	1	11	33	58
2000 pct of Total	100.0%	92.8%	4.0%	2.0%	0.0%	0.9%	0.0%	0.2%	0.7%	1.3%
2010 Total	4,422	3,879	247	162	0	86	0	11	65	134
2010 pct of Total	100.0%	87.7%	5.6%	3.7%	0.0%	1.9%	0.0%	0.2%	1.5%	3.0%
B. Population by Major Age Groups by Race and Ethnicity										
2000										
0-19	1,093	1,004	37	32	0	13	0	4	15	20
20-64	2,445	2,272	97	46	0	27	0	4	15	30
65+	940	878	44	10	1	2	1	3	3	8
85+	144	137	5	2	0	0	1	0	1	0
2010										
0-19	1,040	866	65	57	0	30	0	4	23	52
20-64	2,545	2,247	131	95	0	47	0	7	41	72
65+	837	766	51	10	0	9	0	0	1	10
85+	175	163	9	0	0	0	0	0	0	3
C. Age Mix for Each Racial and Ethnic Group										
2000										
0-19	24.4%	24.2%	20.8%	36.4%	0.0%	31.0%	0.0%	36.4%	45.5%	34.5%
20-64	54.6%	54.7%	54.5%	52.3%	0.0%	64.3%	0.0%	36.4%	45.5%	51.7%
65+	21.0%	21.1%	24.7%	11.4%	100.0%	4.8%	100.0%	27.3%	9.1%	13.8%
85+	3.2%	3.3%	2.8%	2.3%	0.0%	0.0%	100.0%	0.0%	3.0%	0.0%
2010										
0-19	23.5%	22.3%	26.3%	35.2%	0.0%	34.9%	0.0%	36.4%	35.4%	38.8%
20-64	57.6%	57.9%	53.0%	58.6%	0.0%	54.7%	0.0%	63.6%	63.1%	53.7%
65+	18.9%	19.7%	20.6%	6.2%	0.0%	10.5%	0.0%	0.0%	1.5%	7.5%
85+	4.0%	4.2%	3.6%	0.0%	0.0%	0.0%	0.0%	0.0%	0.0%	2.2%
D. Racial and Ethnic Composition of Each Age Group										
2000										
0-19	100.0%	91.9%	3.4%	2.9%	0.0%	1.2%	0.0%	0.4%	1.4%	1.8%
20-64	100.0%	92.9%	4.0%	1.9%	0.0%	1.1%	0.0%	0.2%	0.6%	1.2%
65+	100.0%	93.4%	4.7%	1.1%	0.1%	0.2%	0.1%	0.3%	0.3%	0.9%
85+	100.0%	95.1%	3.5%	1.4%	0.0%	0.0%	0.7%	0.0%	0.7%	0.0%
2010										
0-19	100.0%	83.3%	6.3%	5.5%	0.0%	2.9%	0.0%	0.4%	2.2%	5.0%
20-64	100.0%	88.3%	5.1%	3.7%	0.0%	1.8%	0.0%	0.3%	1.6%	2.8%
65+	100.0%	91.5%	6.1%	1.2%	0.0%	1.1%	0.0%	0.0%	0.1%	1.2%
85+	100.0%	93.1%	5.1%	0.0%	0.0%	0.0%	0.0%	0.0%	0.0%	1.7%
E. Population Growth										
2000-2010, Change										
0-19	-53	-138	28	25	0	17	0	0	8	32
20-64	100	-25	34	49	0	20	0	3	26	42
65+	-103	-112	7	0	-1	7	-1	-3	-2	2
85+	31	26	4	-2	0	0	-1	0	-1	3
Total	-56	-275	69	74	-1	44	-1	0	32	76
2000-2010, Pct Change										
0-19	-4.8%	-13.7%	75.7%	78.1%	0.0%	130.8%	0.0%	0.0%	53.3%	160.0%
20-64	4.1%	-1.1%	35.1%	106.5%	0.0%	74.1%	0.0%	75.0%	173.3%	140.0%
65+	-11.0%	-12.8%	15.9%	0.0%	-100.0%	350.0%	-100.0%	-100.0%	-66.7%	25.0%
85+	21.5%	19.0%	80.0%	-100.0%	0.0%	0.0%	-100.0%	0.0%	-100.0%	0.0%
Total	-1.3%	-6.6%	38.8%	84.1%	-100.0%	104.8%	-100.0%	0.0%	97.0%	131.0%

Source: Decennial Census 2010, 2000, American Community Survey 2008-2012

Prepared for the Pennsylvania State Library by The Pennsylvania State Data Center, 9/2014

Reference Data

Jenkintown Library

	Total Population	White, Non- Hispanic	Black, Non- Hispanic	Other, Non- Hispanic	Detail for Other, Non-Hispanic					Hispanic or Latino
					AIAN	Asian	NHOPI	Some Other	Two or More	
								Race	Races	
F. Population by Library-Defined Age Groups, 2010										
0-5	263	224	11	13	0	4	0	1	8	15
6-10	267	223	16	15	0	9	0	0	6	13
11-13	167	140	12	9	0	6	0	1	2	6
14-18	318	256	25	19	0	10	0	2	7	18
19-32	651	546	39	40	0	13	0	3	24	26
33-45	683	591	37	30	0	22	0	2	6	25
46-64	1,236	1,133	56	26	0	13	0	2	11	21
65-84	662	603	42	10	0	9	0	0	1	7
85+	175	163	9	0	0	0	0	0	0	3
Total	4,422	3,879	247	162	0	86	0	11	65	134
G. Population by 5-Year Age Cohorts, 2010										
0-4	207	172	10	13	0	4	0	1	8	12
5-9	272	229	15	13	0	8	0	0	5	15
10-14	295	245	22	14	0	9	0	1	4	14
15-19	266	220	18	17	0	9	0	2	6	11
20-24	225	185	11	15	0	5	0	1	9	14
25-29	248	212	16	16	0	4	0	1	11	4
30-34	245	208	13	12	0	6	0	2	4	12
35-39	254	217	16	12	0	9	0	1	2	9
40-44	272	233	17	12	0	9	0	0	3	10
45-49	316	285	14	7	0	6	0	0	1	10
50-54	345	314	18	7	0	4	0	1	2	6
55-59	350	331	9	8	0	1	0	0	7	2
60-64	290	262	17	6	0	3	0	1	2	5
65-69	193	176	12	2	0	2	0	0	0	3
70-74	151	139	12	0	0	0	0	0	0	0
75-79	162	144	11	4	0	3	0	0	1	3
80-84	156	144	7	4	0	4	0	0	0	1
85-89	123	114	7	0	0	0	0	0	0	2
90-94	37	35	1	0	0	0	0	0	0	1
95-99	11	10	1	0	0	0	0	0	0	0
100+	4	4	0	0	0	0	0	0	0	0
Total	4,422	3,879	247	162	0	86	0	11	65	134

Source: Decennial Census 2010, 2000, American Community Survey 2008-2012

Prepared for the Pennsylvania State Library by The Pennsylvania State Data Center, 9/2014

Reference Data

Jenkintown Library

H. Income Distribution, 2008-2012

Range (in thousands)	Households	Pct of Total
<\$10K	161	8.0%
\$10K to <\$25K	223	11.1%
\$25K to <\$50K	361	18.0%
\$50K to <\$75K	326	16.3%
\$75K to <\$100K	279	13.9%
\$100K to <\$150K	403	20.1%
\$150K+	252	12.6%

I. Household Type, 2010

Household Type	2000	2000pct	2010	2010pct
Total Households	2,035	100.0%	2,014	100.0%
Family Households	1,088	53.5%	1,083	53.8%
Husband-wife, no children w/children	402	19.8%	368	18.3%
Female head, no husband, w/ children	72	3.5%	97	4.8%
Male head, no wife, w/ children	20	1.0%	26	1.3%
Without children	594	29.2%	592	29.4%
Nonfamily households	947	46.5%	931	46.2%
Living alone	826	40.6%	823	40.9%
Other nonfamily	121	5.9%	108	5.4%

J. Household Type by Race and Ethnicity, 2008-2012

Household Type	White, NH	Black, NH	Other, NH	Hispanic
Total Households	1,799	125	57	40
Husband wife family	41.4%	22.4%	40.4%	42.5%
Family with male head, no wife	3.2%	4.8%	3.5%	2.5%
family with female head, no husband	9.3%	17.6%	12.3%	25.0%
Living alone	40.7%	51.2%	36.8%	22.5%
Other nonfamily	5.4%	4.0%	7.0%	7.5%

K. Poverty, 2008-2012

Families	Poverty	PA
All families	0.8%	9.1%
Families w/ related children	1.9%	15.3%
Female householder, no husband present	7.6%	28.8%
Female householder, no husband present, w/ related children	11.5%	39.2%
All people	6.2%	13.1%
Under 18 years	1.0%	18.4%
18 to 64 years	7.3%	12.3%
65 years and over	8.6%	8.4%

L. Educational Attainment by Race and Ethnicity, 2008-2012

Education Level	White, NH	Black	Other	Hispanic	Total
Population 25 years and over	2,827	130	209	106	3,240
Less than high school	1.1%	12.3%	28%	0.0%	3.3%
High school graduate (includes equivalency)	17.8%	43.1%	16%	28.3%	18.8%
Some college or associates degree	24.5%	13.1%	0%	17.0%	22.4%
Bachelors degree or higher	56.6%	31.5%	56%	54.7%	55.5%

M. Occupation, 2008-2012

Occupation	Estimate	Percent
Civilian population age 16 years and over	2,301	100.0%
Management, professional, and related occupations	1,432	62.2%
Service occupations	282	12.3%
Sales and office occupations	407	17.7%
Farming, fishing, and forestry occupations	0	0.0%
Construction, extraction, maintenance, and repair occupations	94	4.1%
Production, transportation, and material moving occupations	86	3.7%

N. Class of Worker, 2008-2012

Occupation	Estimate	Percent
Civilian population age 16 years and over	2,301	100.0%
Private, for profit, wage and salary employee	1,260	54.8%
Private, not for profit, wage and salary employee	524	22.8%
Private, for profit, wage and salary self-employed in own business	72	3.1%
Government workers	299	13.0%
Self-employed in own not incorporated business	146	6.3%
Unpaid family workers in family business	0	0.0%