

Demographic Profile Johnsonburg Public Library

Population Growth: The total population of the Johnsonburg Public Library service area decreased by -17.3 percent over the past decade to 2,483; this decline rate was lower than the statewide rate of 3.4 percent.

Age and Sex: In 2010, the Johnsonburg Public Library service area had a total population of 2,483 - 1,220 males (49.1 percent) and 1,263 females (50.9 percent). The age structure of the population in 2010 was as follows: 24.6 percent of the population was under 20 years old, 57.1 percent was 20 to 64 years old and 18.2 percent was 65 years or older.

Race and Ethnicity: For people reporting one race alone, not of Hispanic ethnicity, 97.1 percent were White; .1 percent were Black or African American; 1.2 percent were Other Race Alone.¹ A total of 38 or 1.5 percent of the population were Hispanic.²

Households: In 2010, there were 1,126 households in the Johnsonburg Public Library service area. The average household size was 2.21 people. Families made up 58.9 percent of the households. This figure includes both families with (25.6 percent) and without (33.3 percent) children. Of families with children less than 18 years old, 15.0 percent were married-couple families, 7.5 percent were female householder families with no husband present, and the remaining (3.0 percent) were male-headed households with no wife present.

Education: The educational attainment of the population 25 years and over was lower in the Johnsonburg Public Library service area than in Pennsylvania. During the period 2008-2012, 7.4 percent of residents had earned a Bachelor's degree or higher, compared with 27.0 percent statewide. A total of 242 or 12.4 percent had not completed high school, compared with 11.7 percent for the commonwealth as a whole.

Income and Poverty: Households with incomes of less than \$25,000 (37.4 percent) made up the largest percent of households in the Johnsonburg Public Library service area in 2008-2012. For comparison, 23.6 percent of commonwealth households were in this range during the period.

In 2008-2012, the overall poverty rate for the Johnsonburg Public Library service area was higher than Pennsylvania (18.9 percent compared to 13.1 percent). The poverty rate for the population under 18 years of age was 37.9 percent, compared with 14.5 percent of people 18 to 64 years and 4.3 percent for those aged 65 years and over. A total of 93 or 12.5 percent of all families had incomes below poverty level. In 2008-2012, 25.9 percent of families with related children and 64.4 percent of families with a female householder and no husband with related children present had incomes below the poverty level.

Class of Worker and Occupation: In 2008-2012, 82.3 percent of the workforce was private wage and salary workers; 13.0 percent were federal, state, or local government workers; and 4.7 percent were self-employed in their own (not incorporated) business.

The top occupation group for the civilian employed population 16 years and over in the Johnsonburg Public Library service area in 2008-2012 was Production (30.6 percent).

¹ Other race includes those who identified themselves as American Indian/Alaska Native, Asian, Native Hawaiian/Other Pacific Islander, Some Other Race and Two or More Races on the 2010 Census form.

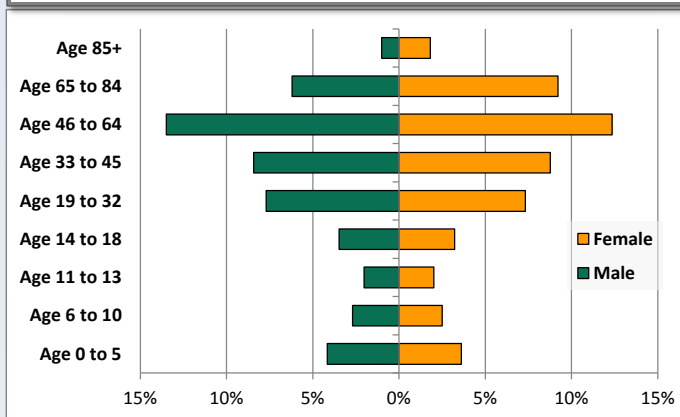
² People of Hispanic origin may be of any race.

Demographic Profile

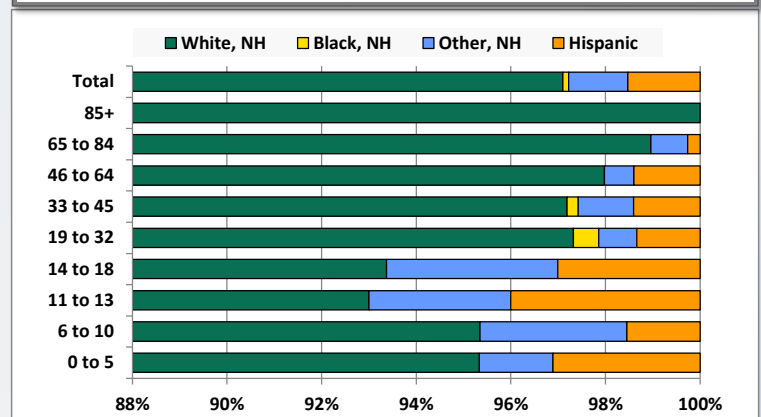
Johnsonburg Public Library

Key Indicators		
	2000	2010
Population Growth		
Total Population	3,003	2,483
10-Year Growth	N/A	-17.3%
Diversity		
White Alone, Non-Hispanic	97.7%	97.1%
Black Alone, Non-Hispanic	0.0%	0.1%
Other Race Alone, Non-Hispanic	0.9%	1.2%
Percent Hispanic	1.3%	1.5%
Aging		
Percent 65 Years and Over	19.9%	18.2%
Households		
Percent Married Couple with Own Children	18.5%	15.0%
Percent Living Alone	33.3%	37.5%

Population by Library-Defined Age Group, 2010



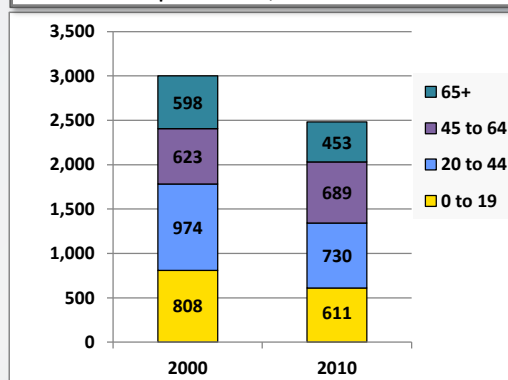
Race/Ethnicity by Library-Defined Age Group, 2010



Population Growth by Library-Defined Age Group, 2000 to 2010

Age Group	2010	Change	
		Numeric	Percent
Total	2,483	-520	-17.3%
85+	70	10	16.7%
65 to 84	383	-155	-28.8%
46 to 64	642	65	11.3%
33 to 45	427	-126	-22.8%
19 to 32	373	-132	-26.1%
14 to 18	166	-74	-30.8%
11 to 13	100	-33	-24.8%
6 to 10	129	-55	-29.9%
0 to 5	193	-20	-9.4%

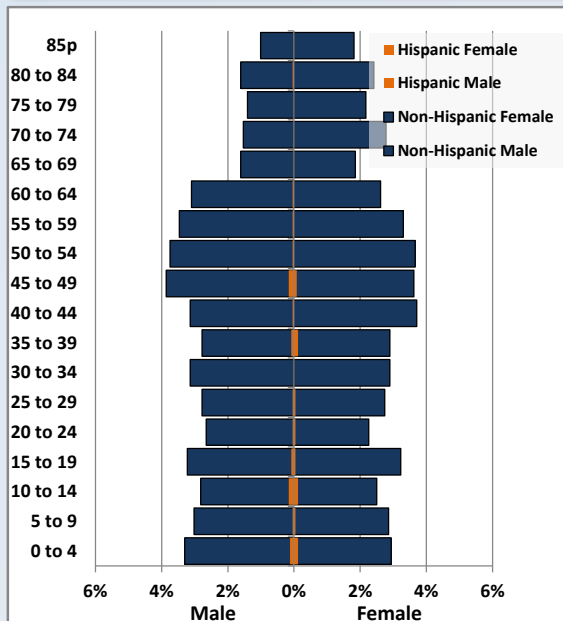
Population Total, 2000 and 2010



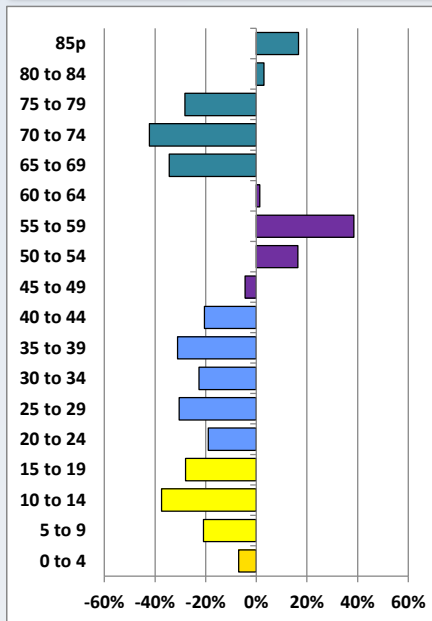
Demographic Profile

Johnsonburg Public Library

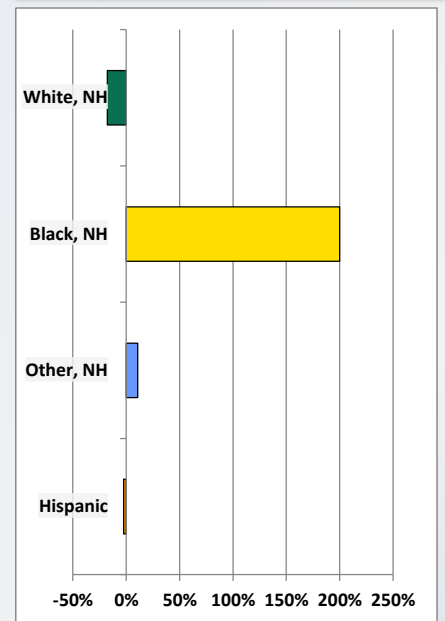
Population by 5-Year Age Cohorts



Pop Change by Age, 2000 to 2010

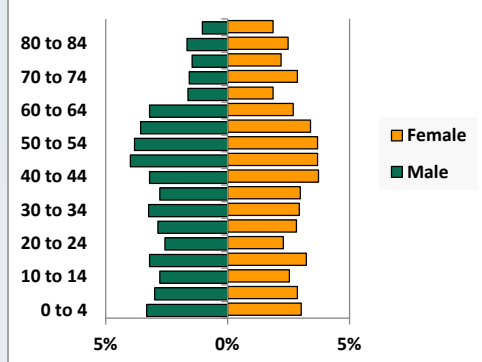


Pop Change by Race/Ethnicity, 2000 to 2010

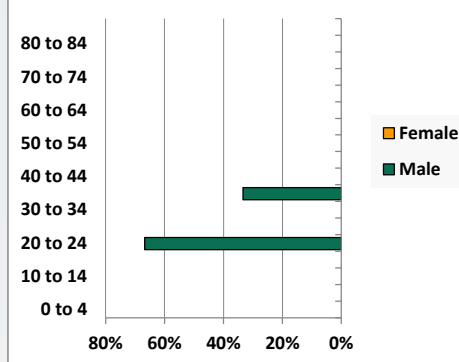


Population by Age, Race and Ethnicity 2010

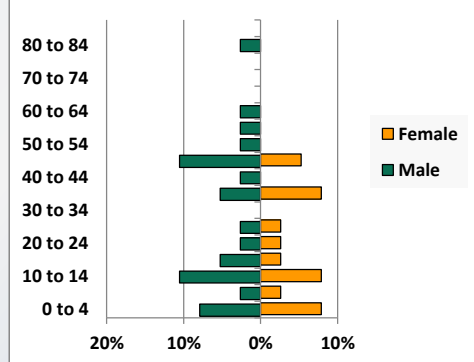
White, Not Hispanic



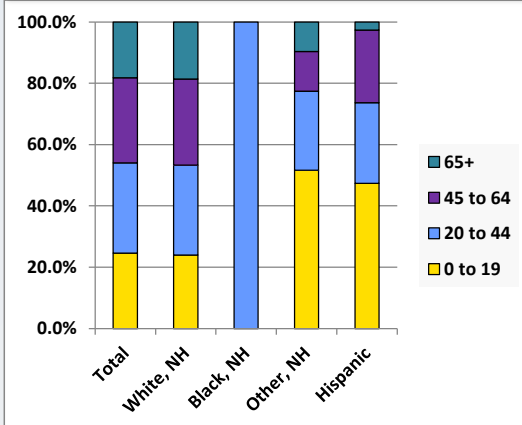
Black, Non-Hispanic



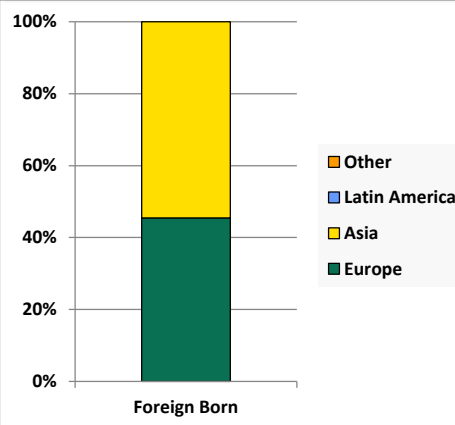
Hispanic



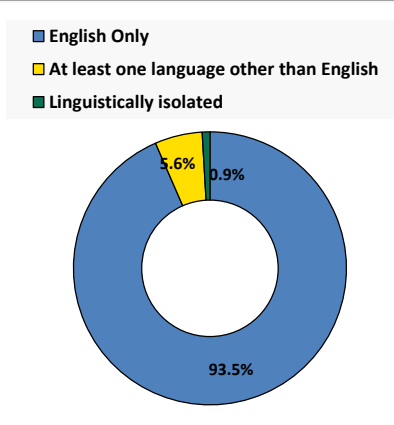
Age by Race and Ethnicity, 2010



Foreign Born, 2010



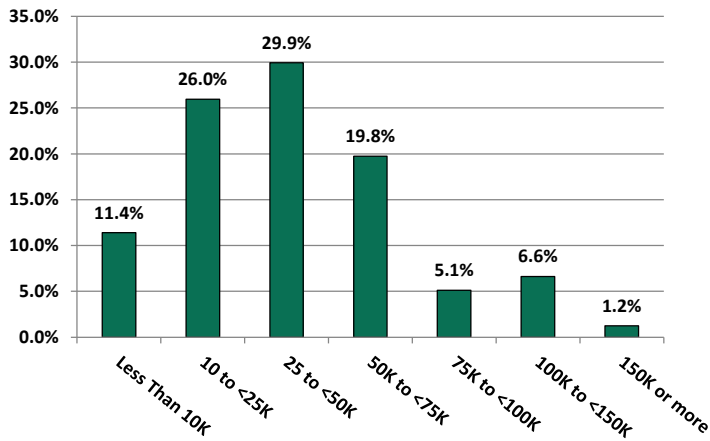
Household Language, 2010



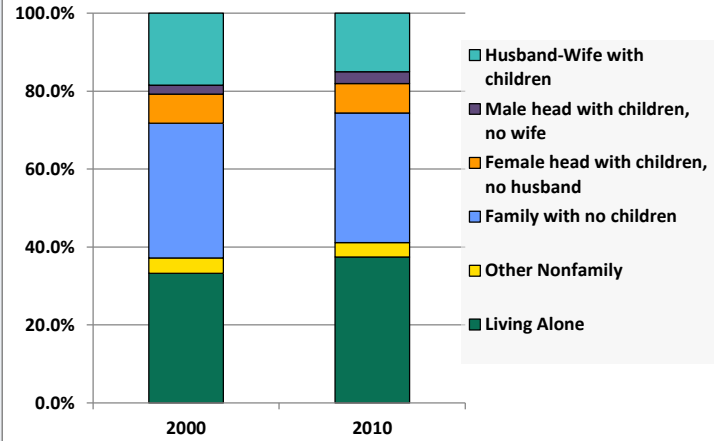
Demographic Profile

Johnsonburg Public Library

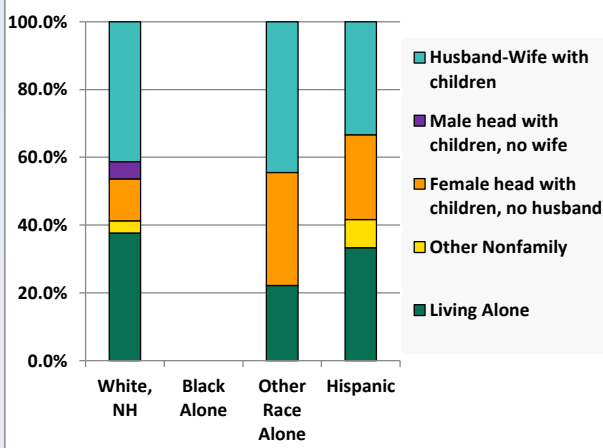
Household Income Distribution, 2008-2012



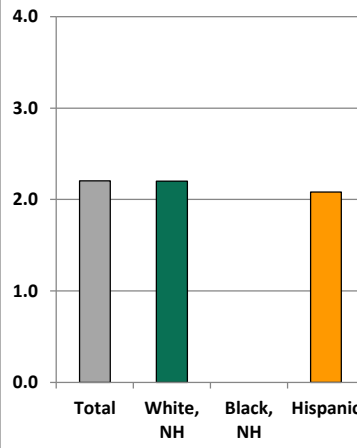
Household Type, 2000 and 2010



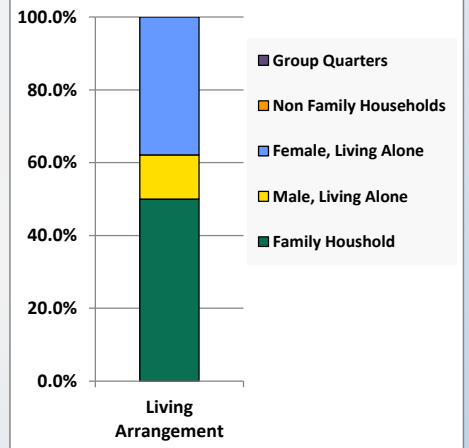
Household Type by Race/Ethnicity, 2010



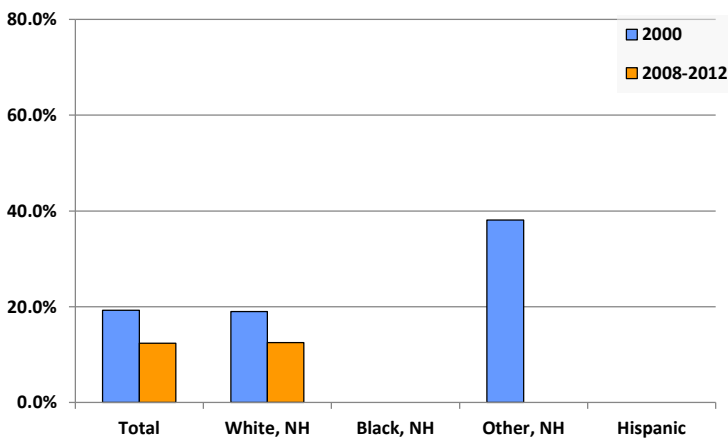
Average Household Size, 2010



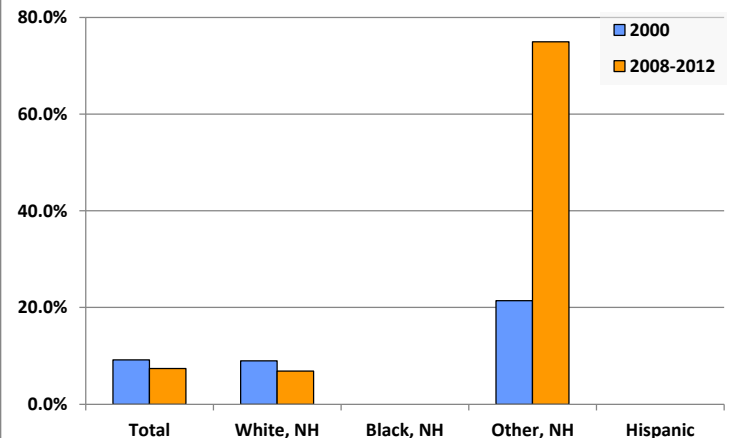
Living Arrangements 65+, 2008-2012



Percent of Adults that Did Not Complete High School



Percent of Adults Who Attained a Bachelor's Degree or Higher



Reference Data

Johnsonburg Public Library

					Detail for Other, Non-Hispanic					
	Total Population	White, Non- Hispanic	Black, Non- Hispanic	Other, Non- Hispanic	AIAN	Asian	NHOPI	Some Other	Two or More	Hispanic or
								Race	Races	Latino
A. Total Population										
2000 Total	3,003	2,935	1	28	9	11	1	0	7	39
2000 pct of Total	100.0%	97.7%	0.0%	0.9%	0.3%	0.4%	0.0%	0.0%	0.2%	1.3%
2010 Total	2,483	2,411	3	31	5	7	0	2	17	38
2010 pct of Total	100.0%	97.1%	0.1%	1.2%	0.2%	0.3%	0.0%	0.1%	0.7%	1.5%
B. Population by Major Age Groups by Race and Ethnicity										
2000										
0-19	808	773	0	10	3	3	0	0	4	25
20-64	1,597	1,566	1	16	6	7	0	0	3	14
65+	598	596	0	2	0	1	1	0	0	0
85+	60	60	0	0	0	0	0	0	0	0
2010										
0-19	611	577	0	16	3	2	0	1	10	18
20-64	1,419	1,385	3	12	1	3	0	1	7	19
65+	453	449	0	3	1	2	0	0	0	1
85+	70	70	0	0	0	0	0	0	0	0
C. Age Mix for Each Racial and Ethnic Group										
2000										
0-19	26.9%	26.3%	0.0%	35.7%	33.3%	27.3%	0.0%	0.0%	57.1%	64.1%
20-64	53.2%	53.4%	100.0%	57.1%	66.7%	63.6%	0.0%	0.0%	42.9%	35.9%
65+	19.9%	20.3%	0.0%	7.1%	0.0%	9.1%	100.0%	0.0%	0.0%	0.0%
85+	2.0%	2.0%	0.0%	0.0%	0.0%	0.0%	0.0%	0.0%	0.0%	0.0%
2010										
0-19	24.6%	23.9%	0.0%	51.6%	60.0%	28.6%	0.0%	50.0%	58.8%	47.4%
20-64	57.1%	57.4%	100.0%	38.7%	20.0%	42.9%	0.0%	50.0%	41.2%	50.0%
65+	18.2%	18.6%	0.0%	9.7%	20.0%	28.6%	0.0%	0.0%	0.0%	2.6%
85+	2.8%	2.9%	0.0%	0.0%	0.0%	0.0%	0.0%	0.0%	0.0%	0.0%
D. Racial and Ethnic Composition of Each Age Group										
2000										
0-19	100.0%	95.7%	0.0%	1.2%	0.4%	0.4%	0.0%	0.0%	0.5%	3.1%
20-64	100.0%	98.1%	0.1%	1.0%	0.4%	0.4%	0.0%	0.0%	0.2%	0.9%
65+	100.0%	99.7%	0.0%	0.3%	0.0%	0.2%	0.2%	0.0%	0.0%	0.0%
85+	100.0%	100.0%	0.0%	0.0%	0.0%	0.0%	0.0%	0.0%	0.0%	0.0%
2010										
0-19	100.0%	94.4%	0.0%	2.6%	0.5%	0.3%	0.0%	0.2%	1.6%	2.9%
20-64	100.0%	97.6%	0.2%	0.8%	0.1%	0.2%	0.0%	0.1%	0.5%	1.3%
65+	100.0%	99.1%	0.0%	0.7%	0.2%	0.4%	0.0%	0.0%	0.0%	0.2%
85+	100.0%	100.0%	0.0%	0.0%	0.0%	0.0%	0.0%	0.0%	0.0%	0.0%
E. Population Growth										
2000-2010, Change										
0-19	-197	-196	0	6	0	-1	0	1	6	-7
20-64	-178	-181	2	-4	-5	-4	0	1	4	5
65+	-145	-147	0	1	1	1	-1	0	0	1
85+	10	10	0	0	0	0	0	0	0	0
Total	-520	-524	2	3	-4	-4	-1	2	10	-1
2000-2010, Pct Change										
0-19	-24.4%	-25.4%	0.0%	60.0%	0.0%	-33.3%	0.0%	0.0%	150.0%	-28.0%
20-64	-11.1%	-11.6%	200.0%	-25.0%	-83.3%	-57.1%	0.0%	0.0%	133.3%	35.7%
65+	-24.2%	-24.7%	0.0%	50.0%	0.0%	100.0%	-100.0%	0.0%	0.0%	0.0%
85+	16.7%	16.7%	0.0%	0.0%	0.0%	0.0%	0.0%	0.0%	0.0%	0.0%
Total	-17.3%	-17.9%	200.0%	10.7%	-44.4%	-36.4%	-100.0%	0.0%	142.9%	-2.6%

Source: Decennial Census 2010, 2000, American Community Survey 2008-2012

Prepared for the Pennsylvania State Library by The Pennsylvania State Data Center, 9/2014

Reference Data

Johnsonburg Public Library

	Total Population	White, Non- Hispanic	Black, Non- Hispanic	Other, Non- Hispanic	Detail for Other, Non-Hispanic					Hispanic or Latino
					AIAN	Asian	NHOPI	Some Other	Two or More	
								Race	Races	
F. Population by Library-Defined Age Groups, 2010										
0-5	193	184	0	3	0	1	0	0	2	6
6-10	129	123	0	4	0	1	0	0	3	2
11-13	100	93	0	3	2	0	0	0	1	4
14-18	166	155	0	6	1	0	0	1	4	5
19-32	373	363	2	3	0	0	0	1	2	5
33-45	427	415	1	5	1	1	0	0	3	6
46-64	642	629	0	4	0	2	0	0	2	9
65-84	383	379	0	3	1	2	0	0	0	1
85+	70	70	0	0	0	0	0	0	0	0
Total	2,483	2,411	3	31	5	7	0	2	17	38
G. Population by 5-Year Age Cohorts, 2010										
0-4	161	153	0	2	0	0	0	0	2	6
5-9	148	141	0	5	0	2	0	0	3	2
10-14	139	128	0	4	2	0	0	1	1	7
15-19	163	155	0	5	1	0	0	0	4	3
20-24	124	117	2	3	0	0	0	1	2	2
25-29	139	137	0	0	0	0	0	0	0	2
30-34	150	149	0	1	0	0	0	0	1	0
35-39	146	139	1	1	0	0	0	0	1	5
40-44	171	167	0	3	1	1	0	0	1	1
45-49	192	185	0	1	0	1	0	0	0	6
50-54	185	181	0	3	0	1	0	0	2	1
55-59	169	168	0	0	0	0	0	0	0	1
60-64	143	142	0	0	0	0	0	0	0	1
65-69	86	84	0	2	0	2	0	0	0	0
70-74	107	107	0	0	0	0	0	0	0	0
75-79	89	88	0	1	1	0	0	0	0	0
80-84	101	100	0	0	0	0	0	0	0	1
85-89	50	50	0	0	0	0	0	0	0	0
90-94	15	15	0	0	0	0	0	0	0	0
95-99	5	5	0	0	0	0	0	0	0	0
100+	0	0	0	0	0	0	0	0	0	0
Total	2,483	2,411	3	31	5	7	0	2	17	38

Source: Decennial Census 2010, 2000, American Community Survey 2008-2012
 Prepared for the Pennsylvania State Library by The Pennsylvania State Data Center, 9/2014

Reference Data

Johnsonburg Public Library

H. Income Distribution, 2008-2012

Range (in thousands)	Households	Pct of Total
<\$10K	138	11.4%
\$10K to <\$25K	314	26.0%
\$25K to <\$50K	362	29.9%
\$50K to <\$75K	239	19.8%
\$75K to <\$100K	62	5.1%
\$100K to <\$150K	80	6.6%
\$150K+	15	1.2%

I. Household Type, 2010

Household Type	2000	2000pct	2010	2010pct
Total Households	1,292	100.0%	1,126	100.0%
Family Households	811	62.8%	663	58.9%
Husband-wife, no children w/children	239	18.5%	169	15.0%
Female head, no husband, w/ children	97	7.5%	85	7.5%
Male head, no wife, w/ children	29	2.2%	34	3.0%
Without children	446	34.5%	375	33.3%
Nonfamily households	481	37.2%	463	41.1%
Living alone	430	33.3%	422	37.5%
Other nonfamily	51	3.9%	41	3.6%

J. Household Type by Race and Ethnicity, 2008-2012

Household Type	White, NH	Black, NH	Other, NH	Hispanic
Total Households	1,108	0	9	12
Husband wife family	41.2%	0.0%	44.4%	33.3%
Family with male head, no wife	5.1%	0.0%	0.0%	0.0%
family with female head, no husband	12.4%	0.0%	33.3%	25.0%
Living alone	37.6%	0.0%	22.2%	33.3%
Other nonfamily	3.6%	0.0%	0.0%	8.3%

K. Poverty, 2008-2012

Families	Poverty	PA
All families	12.5%	9.1%
Families w/ related children	25.9%	15.3%
Female householder, no husband present	48.6%	28.8%
Female householder, no husband present, w/ related children	64.4%	39.2%
All people	18.9%	13.1%
Under 18 years	37.9%	18.4%
18 to 64 years	14.5%	12.3%
65 years and over	4.3%	8.4%

L. Educational Attainment by Race and Ethnicity, 2008-2012

Education Level	White, NH	Black	Other	Hispanic	Total
Population 25 years and over	1,939	0	16	0	1,955
Less than high school	12.5%	0.0%	0%	0.0%	12.4%
High school graduate (includes equivalency	56.2%	0.0%	25%	0.0%	56.0%
Some college or associates degree	24.4%	0.0%	0%	0.0%	24.2%
Bachelors degree or higher	6.9%	0.0%	75%	0.0%	7.4%

M. Occupation, 2008-2012

Occupation	Estimate	Percent
Civilian population age 16 years and over	1,074	100.0%
Management, professional, and related occupations	210	19.6%
Service occupations	262	24.4%
Sales and office occupations	183	17.0%
Farming, fishing, and forestry occupations	20	1.9%
Construction, extraction, maintenance, and repair occupations	70	6.5%
Production, transportation, and material moving occupations	329	30.6%

N. Class of Worker, 2008-2012

Occupation	Estimate	Percent
Civilian population age 16 years and over	1,074	100.0%
Private, for profit, wage and salary employee	821	76.4%
Private, not for profit, wage and salary employee	44	4.1%
Private, for profit, wage and salary self-employed in own business	19	1.8%
Government workers	140	13.0%
Self-employed in own not incorporated business	50	4.7%
Unpaid family workers in family business	0	0.0%