

Demographic Profile Kittanning Public Library

Population Growth: The total population of the Kittanning Public Library service area decreased by -12.8 percent over the past decade to 5,529; this decline rate was lower than the statewide rate of 3.4 percent.

Age and Sex: In 2010, the Kittanning Public Library service area had a total population of 5,529 - 2,507 males (45.3 percent) and 3,022 females (54.7 percent). The age structure of the population in 2010 was as follows: 22.6 percent of the population was under 20 years old, 57.4 percent was 20 to 64 years old and 19.9 percent was 65 years or older.

Race and Ethnicity: For people reporting one race alone, not of Hispanic ethnicity, 96.9 percent were White; .7 percent were Black or African American; 1.6 percent were Other Race Alone.¹ A total of 43 or .8 percent of the population were Hispanic.²

Households: In 2010, there were 2,580 households in the Kittanning Public Library service area. The average household size was 2.10 people. Families made up 50.8 percent of the households. This figure includes both families with (22.0 percent) and without (28.8 percent) children. Of families with children less than 18 years old, 12.0 percent were married-couple families, 7.1 percent were female householder families with no husband present, and the remaining (2.9 percent) were male-headed households with no wife present.

Education: The educational attainment of the population 25 years and over was lower in the Kittanning Public Library service area than in Pennsylvania. During the period 2008-2012, 17.5 percent of residents had earned a Bachelor's degree or higher, compared with 27.0 percent statewide. A total of 438 or 11.0 percent had not completed high school, compared with 11.7 percent for the commonwealth as a whole.

Income and Poverty: Households with incomes of less than \$25,000 (34.3 percent) made up the largest percent of households in the Kittanning Public Library service area in 2008-2012. For comparison, 23.6 percent of commonwealth households were in this range during the period.

In 2008-2012, the overall poverty rate for the Kittanning Public Library service area was higher than Pennsylvania (15.3 percent compared to 13.1 percent). The poverty rate for the population under 18 years of age was 16.2 percent, compared with 16.9 percent of people 18 to 64 years and 8.7 percent for those aged 65 years and over. A total of 204 or 14.9 percent of all families had incomes below poverty level. In 2008-2012, 17.4 percent of families with related children and 53.3 percent of families with a female householder and no husband with related children present had incomes below the poverty level.

Class of Worker and Occupation: In 2008-2012, 77.7 percent of the workforce was private wage and salary workers; 18.4 percent were federal, state, or local government workers; and 3.9 percent were self-employed in their own (not incorporated) business.

The top occupation group for the civilian employed population 16 years and over in the Kittanning Public Library service area in 2008-2012 was Management, business, science, and arts (28.7 percent).

¹ Other race includes those who identified themselves as American Indian/Alaska Native, Asian, Native Hawaiian/Other Pacific Islander, Some Other Race and Two or More Races on the 2010 Census form.

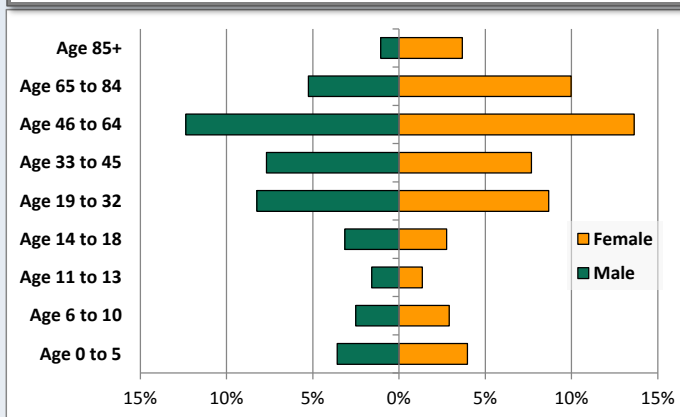
² People of Hispanic origin may be of any race.

Demographic Profile

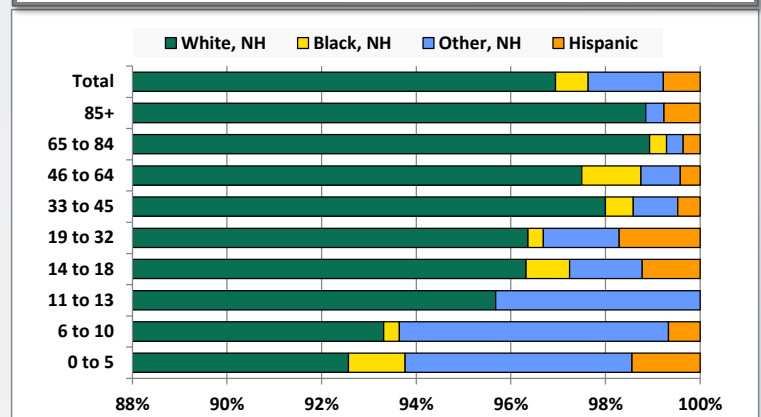
Kittanning Public Library

Key Indicators		
	2000	2010
Population Growth		
Total Population	6,342	5,529
10-Year Growth	N/A	-12.8%
Diversity		
White Alone, Non-Hispanic	97.3%	96.9%
Black Alone, Non-Hispanic	1.2%	0.7%
Other Race Alone, Non-Hispanic	0.9%	1.6%
Percent Hispanic	0.6%	0.8%
Aging		
Percent 65 Years and Over	21.3%	19.9%
Households		
Percent Married Couple with Own Children	16.1%	12.0%
Percent Living Alone	38.6%	42.4%

Population by Library-Defined Age Group, 2010



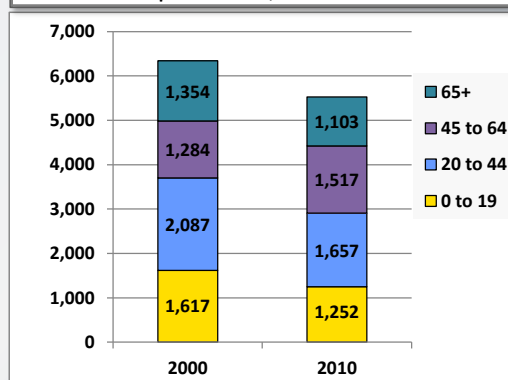
Race/Ethnicity by Library-Defined Age Group, 2010



Population Growth by Library-Defined Age Group, 2000 to 2010

Age Group	2010	Change	
		Numeric	Percent
Total	5,529	-813	-12.8%
85+	261	22	9.2%
65 to 84	842	-273	-24.5%
46 to 64	1,437	251	21.2%
33 to 45	850	-382	-31.0%
19 to 32	935	-150	-13.8%
14 to 18	326	-128	-28.2%
11 to 13	162	-54	-25.0%
6 to 10	299	-112	-27.3%
0 to 5	417	13	3.2%

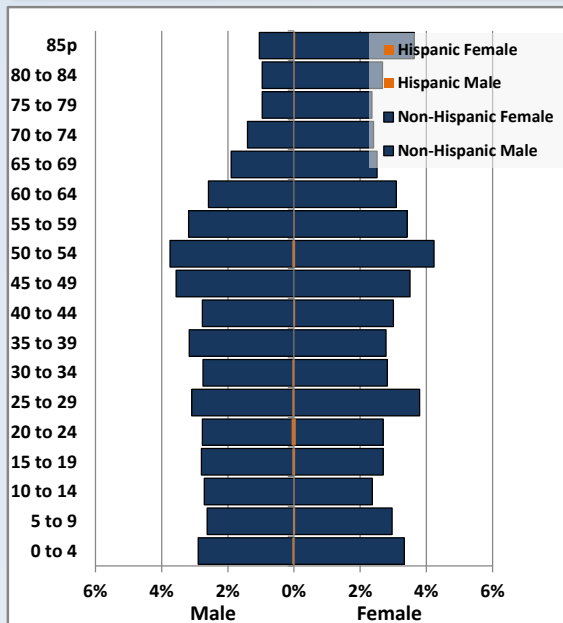
Population Total, 2000 and 2010



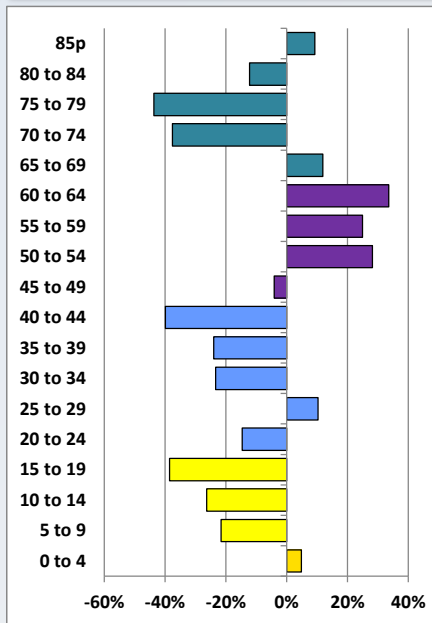
Demographic Profile

Kittanning Public Library

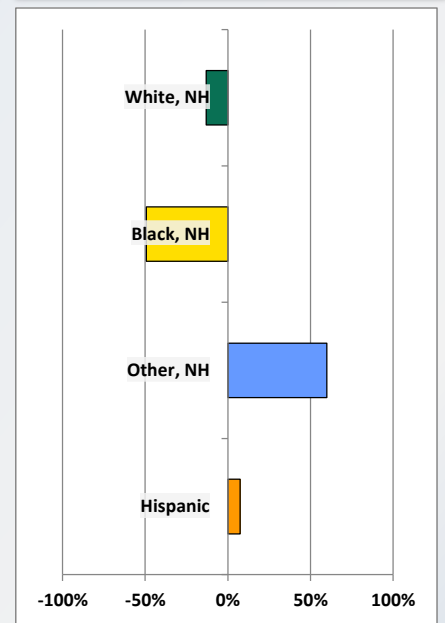
Population by 5-Year Age Cohorts



Pop Change by Age, 2000 to 2010

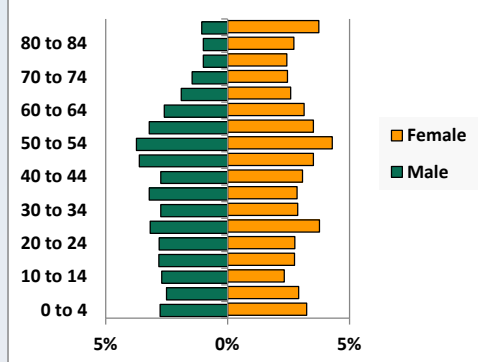


Pop Change by Race/Ethnicity, 2000 to 2010

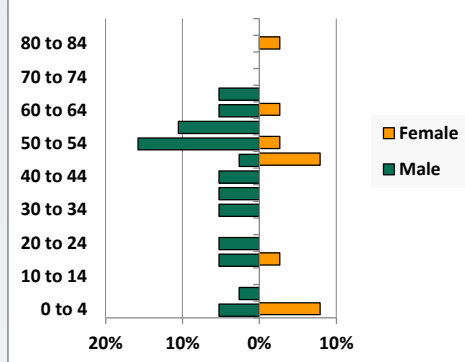


Population by Age, Race and Ethnicity 2010

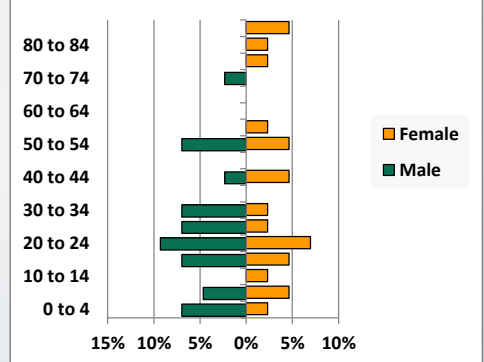
White, Not Hispanic



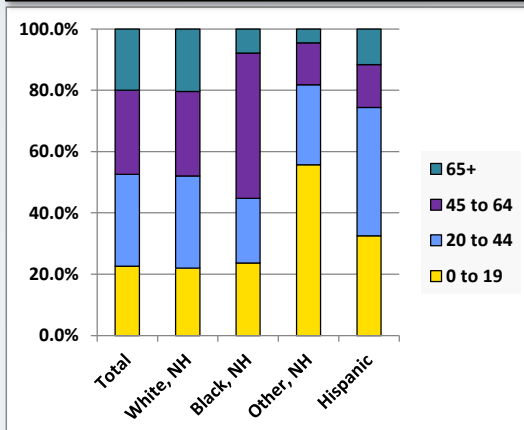
Black, Non-Hispanic



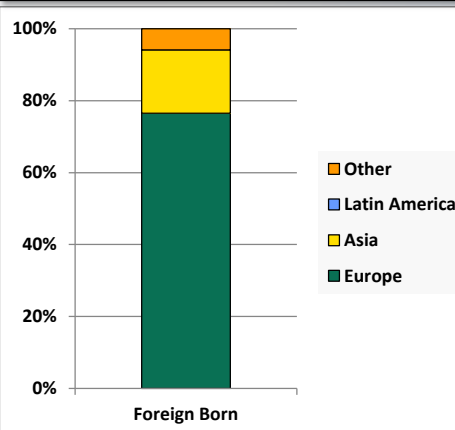
Hispanic



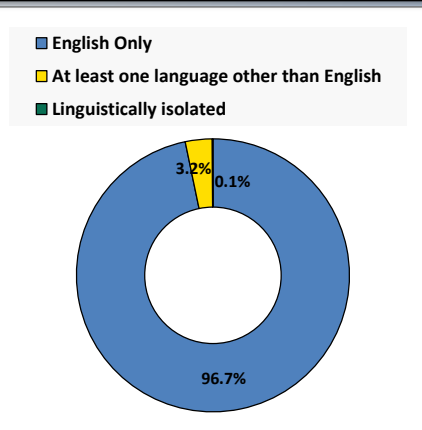
Age by Race and Ethnicity, 2010



Foreign Born, 2010



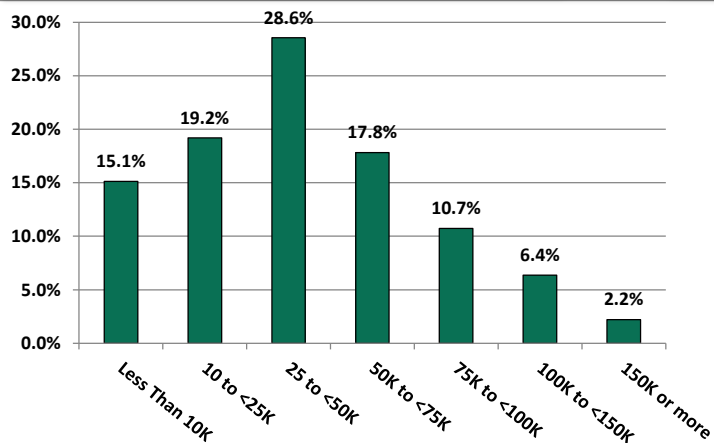
Household Language, 2010



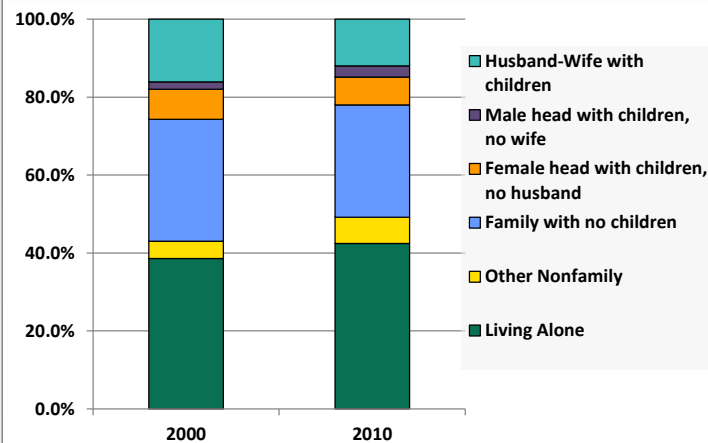
Demographic Profile

Kittanning Public Library

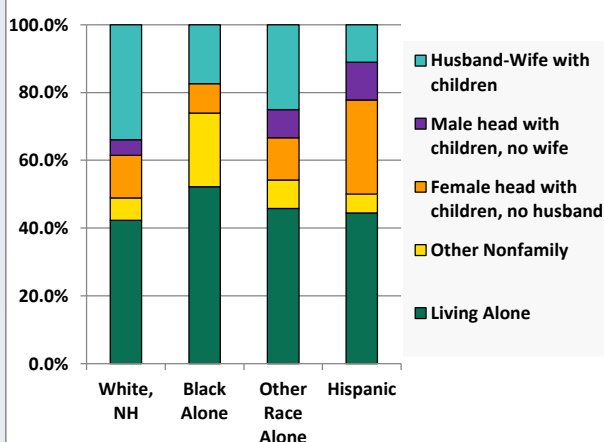
Household Income Distribution, 2008-2012



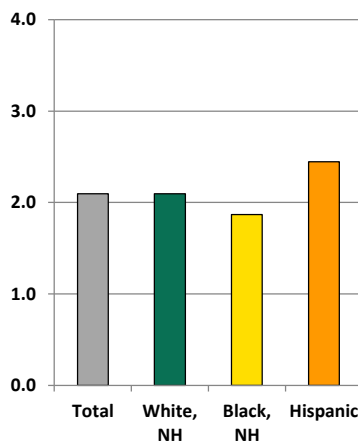
Household Type, 2000 and 2010



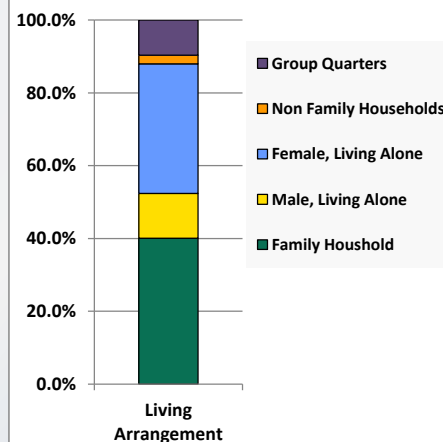
Household Type by Race/Ethnicity, 2010



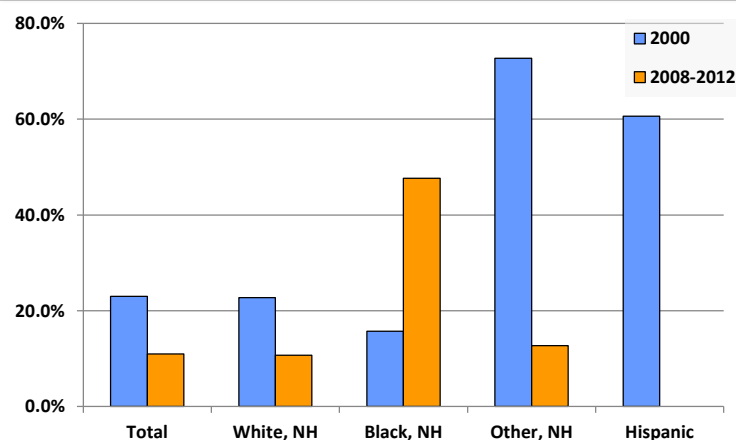
Average Household Size, 2010



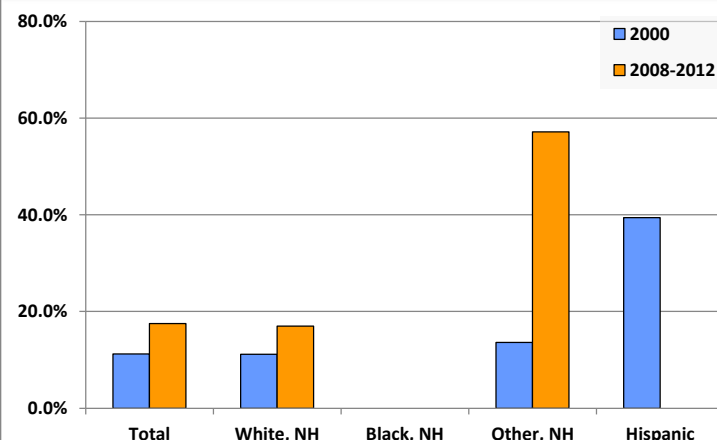
Living Arrangements 65+, 2008-2012



Percent of Adults that Did Not Complete High School



Percent of Adults Who Attained a Bachelor's Degree or Higher



Reference Data

Kittanning Public Library

	Total Population	White, Non- Hispanic	Black, Non- Hispanic	Other, Non- Hispanic	Detail for Other, Non-Hispanic					Hispanic or Latino
					AIAN	Asian	NHOPI	Some Other Race	Two or More Races	
A. Total Population										
2000 Total	6,342	6,172	75	55	11	13	0	2	29	40
2000 pct of Total	100.0%	97.3%	1.2%	0.9%	0.2%	0.2%	0.0%	0.0%	0.5%	0.6%
2010 Total	5,529	5,360	38	88	5	20	0	1	62	43
2010 pct of Total	100.0%	96.9%	0.7%	1.6%	0.1%	0.4%	0.0%	0.0%	1.1%	0.8%
B. Population by Major Age Groups by Race and Ethnicity										
2000										
0-19	1,617	1,535	37	25	2	4	0	1	18	20
20-64	3,371	3,296	32	28	9	9	0	1	9	15
65+	1,354	1,341	6	2	0	0	0	0	2	5
85+	239	233	5	1	0	0	0	0	1	0
2010										
0-19	1,252	1,180	9	49	0	5	0	1	43	14
20-64	3,174	3,089	26	35	4	13	0	0	18	24
65+	1,103	1,091	3	4	1	2	0	0	1	5
85+	261	258	0	1	0	1	0	0	0	2
C. Age Mix for Each Racial and Ethnic Group										
2000										
0-19	25.5%	24.9%	49.3%	45.5%	18.2%	30.8%	0.0%	50.0%	62.1%	50.0%
20-64	53.2%	53.4%	42.7%	50.9%	81.8%	69.2%	0.0%	50.0%	31.0%	37.5%
65+	21.3%	21.7%	8.0%	3.6%	0.0%	0.0%	0.0%	0.0%	6.9%	12.5%
85+	3.8%	3.8%	6.7%	1.8%	0.0%	0.0%	0.0%	0.0%	3.4%	0.0%
2010										
0-19	22.6%	22.0%	23.7%	55.7%	0.0%	25.0%	0.0%	100.0%	69.4%	32.6%
20-64	57.4%	57.6%	68.4%	39.8%	80.0%	65.0%	0.0%	0.0%	29.0%	55.8%
65+	19.9%	20.4%	7.9%	4.5%	20.0%	10.0%	0.0%	0.0%	1.6%	11.6%
85+	4.7%	4.8%	0.0%	1.1%	0.0%	5.0%	0.0%	0.0%	0.0%	4.7%
D. Racial and Ethnic Composition of Each Age Group										
2000										
0-19	100.0%	94.9%	2.3%	1.5%	0.1%	0.2%	0.0%	0.1%	1.1%	1.2%
20-64	100.0%	97.8%	0.9%	0.8%	0.3%	0.3%	0.0%	0.0%	0.3%	0.4%
65+	100.0%	99.0%	0.4%	0.1%	0.0%	0.0%	0.0%	0.0%	0.1%	0.4%
85+	100.0%	97.5%	2.1%	0.4%	0.0%	0.0%	0.0%	0.0%	0.4%	0.0%
2010										
0-19	100.0%	94.2%	0.7%	3.9%	0.0%	0.4%	0.0%	0.1%	3.4%	1.1%
20-64	100.0%	97.3%	0.8%	1.1%	0.1%	0.4%	0.0%	0.0%	0.6%	0.8%
65+	100.0%	98.9%	0.3%	0.4%	0.1%	0.2%	0.0%	0.0%	0.1%	0.5%
85+	100.0%	98.9%	0.0%	0.4%	0.0%	0.4%	0.0%	0.0%	0.0%	0.8%
E. Population Growth										
2000-2010, Change										
0-19	-365	-355	-28	24	-2	1	0	0	25	-6
20-64	-197	-207	-6	7	-5	4	0	-1	9	9
65+	-251	-250	-3	2	1	2	0	0	-1	0
85+	22	25	-5	0	0	1	0	0	-1	2
Total	-813	-812	-37	33	-6	7	0	-1	33	3
2000-2010, Pct Change										
0-19	-22.6%	-23.1%	-75.7%	96.0%	-100.0%	25.0%	0.0%	0.0%	138.9%	-30.0%
20-64	-5.8%	-6.3%	-18.8%	25.0%	-55.6%	44.4%	0.0%	-100.0%	100.0%	60.0%
65+	-18.5%	-18.6%	-50.0%	100.0%	0.0%	0.0%	0.0%	0.0%	-50.0%	0.0%
85+	9.2%	10.7%	-100.0%	0.0%	0.0%	0.0%	0.0%	0.0%	-100.0%	0.0%
Total	-12.8%	-13.2%	-49.3%	60.0%	-54.5%	53.8%	0.0%	-50.0%	113.8%	7.5%

Source: Decennial Census 2010, 2000, American Community Survey 2008-2012

Prepared for the Pennsylvania State Library by The Pennsylvania State Data Center, 9/2014

Reference Data

Kittanning Public Library

	Total Population	White, Non- Hispanic	Black, Non- Hispanic	Other, Non- Hispanic	Detail for Other, Non-Hispanic					Hispanic or Latino
					AIAN	Asian	NHOPI	Some Other	Two or More	
								Race	Races	
F. Population by Library-Defined Age Groups, 2010										
0-5	417	386	5	20	0	0	0	0	20	6
6-10	299	279	1	17	0	3	0	0	14	2
11-13	162	155	0	7	0	2	0	1	4	0
14-18	326	314	3	5	0	0	0	0	5	4
19-32	935	901	3	15	2	5	0	0	8	16
33-45	850	833	5	8	0	5	0	0	3	4
46-64	1,437	1,401	18	12	2	3	0	0	7	6
65-84	842	833	3	3	1	1	0	0	1	3
85+	261	258	0	1	0	1	0	0	0	2
Total	5,529	5,360	38	88	5	20	0	1	62	43
G. Population by 5-Year Age Cohorts, 2010										
0-4	348	322	5	17	0	0	0	0	17	4
5-9	313	290	1	18	0	3	0	0	15	4
10-14	282	270	0	11	0	2	0	1	8	1
15-19	309	298	3	3	0	0	0	0	3	5
20-24	309	298	2	2	0	0	0	0	2	7
25-29	385	372	0	9	2	2	0	0	5	4
30-34	312	301	2	5	0	4	0	0	1	4
35-39	329	325	2	2	0	1	0	0	1	0
40-44	322	312	2	5	0	3	0	0	2	3
45-49	391	383	4	4	0	0	0	0	4	0
50-54	446	430	7	4	1	2	0	0	1	5
55-59	366	361	4	0	0	0	0	0	0	1
60-64	314	307	3	4	1	1	0	0	2	0
65-69	244	241	2	1	1	0	0	0	0	0
70-74	212	210	0	1	0	1	0	0	0	1
75-79	184	183	0	0	0	0	0	0	0	1
80-84	202	199	1	1	0	0	0	0	1	1
85-89	173	170	0	1	0	1	0	0	0	2
90-94	72	72	0	0	0	0	0	0	0	0
95-99	15	15	0	0	0	0	0	0	0	0
100+	1	1	0	0	0	0	0	0	0	0
Total	5,529	5,360	38	88	5	20	0	1	62	43

Source: Decennial Census 2010, 2000, American Community Survey 2008-2012
 Prepared for the Pennsylvania State Library by The Pennsylvania State Data Center, 9/2014

Reference Data

Kittanning Public Library

H. Income Distribution, 2008-2012

Range (in thousands)	Households	Pct of Total
<\$10K	389	15.1%
\$10K to <\$25K	494	19.2%
\$25K to <\$50K	735	28.6%
\$50K to <\$75K	459	17.8%
\$75K to <\$100K	276	10.7%
\$100K to <\$150K	164	6.4%
\$150K+	57	2.2%

I. Household Type, 2010

Household Type	2000	2000pct	2010	2010pct
Total Households	2,719	100.0%	2,580	100.0%
Family Households	1,549	57.0%	1,311	50.8%
Husband-wife, no children w/children	438	16.1%	310	12.0%
Female head, no husband, w/ children	211	7.8%	184	7.1%
Male head, no wife, w/ children	50	1.8%	74	2.9%
Without children	850	31.3%	743	28.8%
Nonfamily households	1,170	43.0%	1,269	49.2%
Living alone	1,050	38.6%	1,095	42.4%
Other nonfamily	120	4.4%	174	6.7%

J. Household Type by Race and Ethnicity, 2008-2012

Household Type	White, NH	Black, NH	Other, NH	Hispanic
Total Households	2,517	23	24	18
Husband wife family	33.9%	17.4%	25.0%	11.1%
Family with male head, no wife	4.6%	0.0%	8.3%	11.1%
family with female head, no husband	12.6%	8.7%	12.5%	27.8%
Living alone	42.3%	52.2%	45.8%	44.4%
Other nonfamily	6.6%	21.7%	8.3%	5.6%

K. Poverty, 2008-2012

Families	Poverty	PA
All families	14.9%	9.1%
Families w/ related children	17.4%	15.3%
Female householder, no husband present	52.5%	28.8%
Female householder, no husband present, w/ related children	53.3%	39.2%
All people	15.3%	13.1%
Under 18 years	16.2%	18.4%
18 to 64 years	16.9%	12.3%
65 years and over	8.7%	8.4%

L. Educational Attainment by Race and Ethnicity, 2008-2012

Education Level	White, NH	Black	Other	Hispanic	Total
Population 25 years and over	3,912	21	63	0	3,996
Less than high school	10.7%	47.6%	13%	0.0%	11.0%
High school graduate (includes equivalency)	48.7%	0.0%	0%	0.0%	47.6%
Some college or associates degree	23.6%	52.4%	30%	0.0%	23.8%
Bachelors degree or higher	17.0%	0.0%	57%	0.0%	17.5%

M. Occupation, 2008-2012

Occupation	Estimate	Percent
Civilian population age 16 years and over	2,488	100.0%
Management, professional, and related occupations	714	28.7%
Service occupations	407	16.4%
Sales and office occupations	656	26.4%
Farming, fishing, and forestry occupations	15	0.6%
Construction, extraction, maintenance, and repair occupations	216	8.7%
Production, transportation, and material moving occupations	480	19.3%

N. Class of Worker, 2008-2012

Occupation	Estimate	Percent
Civilian population age 16 years and over	2,488	100.0%
Private, for profit, wage and salary employee	1,609	64.7%
Private, not for profit, wage and salary employee	272	10.9%
Private, for profit, wage and salary self-employed in own business	52	2.1%
Government workers	458	18.4%
Self-employed in own not incorporated business	97	3.9%
Unpaid family workers in family business	0	0.0%