

Demographic Profile Knoxville Public Library

Population Growth: The total population of the Knoxville Public Library service area decreased by - .4 percent over the past decade to 1,712; this decline rate was lower than the statewide rate of 3.4 percent.

Age and Sex: In 2010, the Knoxville Public Library service area had a total population of 1,712 - 884 males (51.6 percent) and 828 females (48.4 percent). The age structure of the population in 2010 was as follows: 25.3 percent of the population was under 20 years old, 57.0 percent was 20 to 64 years old and 17.7 percent was 65 years or older.

Race and Ethnicity: For people reporting one race alone, not of Hispanic ethnicity, 97.4 percent were White; .2 percent were Black or African American; 1.3 percent were Other Race Alone.¹ A total of 18 or 1.1 percent of the population were Hispanic.²

Households: In 2010, there were 675 households in the Knoxville Public Library service area. The average household size was 2.54 people. Families made up 73.6 percent of the households. This figure includes both families with (27.3 percent) and without (46.4 percent) children. Of families with children less than 18 years old, 19.6 percent were married-couple families, 4.1 percent were female householder families with no husband present, and the remaining (3.6 percent) were male-headed households with no wife present.

Education: The educational attainment of the population 25 years and over was lower in the Knoxville Public Library service area than in Pennsylvania. During the period 2008-2012, 14.1 percent of residents had earned a Bachelor's degree or higher, compared with 27.0 percent statewide. A total of 140 or 10.8 percent had not completed high school, compared with 11.7 percent for the commonwealth as a whole.

Income and Poverty: Households with incomes of less than \$25,000 (30.4 percent) made up the largest percent of households in the Knoxville Public Library service area in 2008-2012. For comparison, 23.6 percent of commonwealth households were in this range during the period.

In 2008-2012, the overall poverty rate for the Knoxville Public Library service area was higher than Pennsylvania (14.0 percent compared to 13.1 percent). The poverty rate for the population under 18 years of age was 27.8 percent, compared with 11.1 percent of people 18 to 64 years and 6.7 percent for those aged 65 years and over. A total of 61 or 10.4 percent of all families had incomes below poverty level. In 2008-2012, 21.1 percent of families with related children and 52.9 percent of families with a female householder and no husband with related children present had incomes below the poverty level.

Class of Worker and Occupation: In 2008-2012, 75.2 percent of the workforce was private wage and salary workers; 8.4 percent were federal, state, or local government workers; and 16.2 percent were self-employed in their own (not incorporated) business.

The top occupation group for the civilian employed population 16 years and over in the Knoxville Public Library service area in 2008-2012 was Production (28.4 percent).

¹ Other race includes those who identified themselves as American Indian/Alaska Native, Asian, Native Hawaiian/Other Pacific Islander, Some Other Race and Two or More Races on the 2010 Census form.

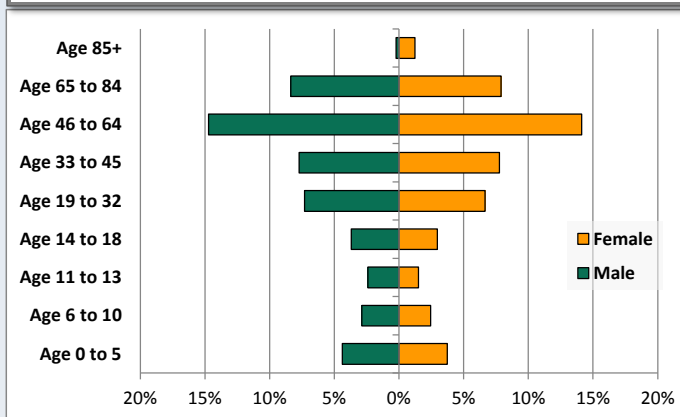
² People of Hispanic origin may be of any race.

Demographic Profile

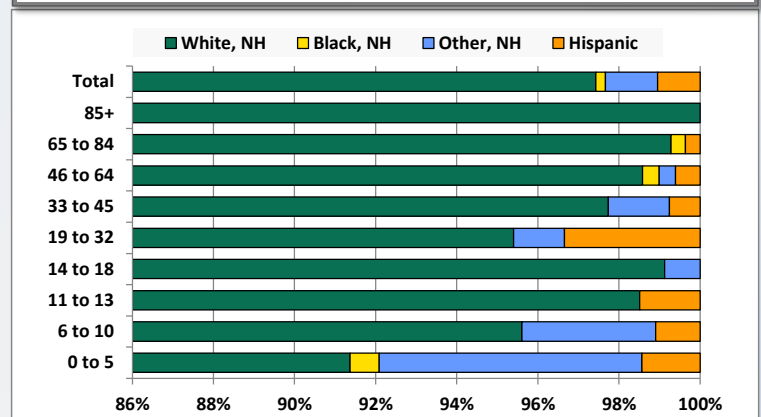
Knoxville Public Library

Key Indicators		
	2000	2010
Population Growth		
Total Population	1,719	1,712
10-Year Growth	N/A	-0.4%
Diversity		
White Alone, Non-Hispanic	98.7%	97.4%
Black Alone, Non-Hispanic	0.2%	0.2%
Other Race Alone, Non-Hispanic	0.5%	1.3%
Percent Hispanic	0.6%	1.1%
Aging		
Percent 65 Years and Over	16.6%	17.7%
Households		
Percent Married Couple with Own Children	22.1%	19.6%
Percent Living Alone	21.8%	22.1%

Population by Library-Defined Age Group, 2010



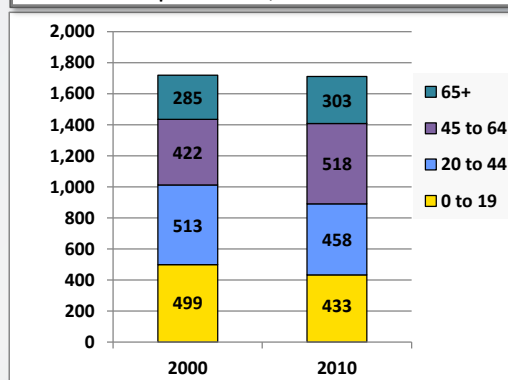
Race/Ethnicity by Library-Defined Age Group, 2010



Population Growth by Library-Defined Age Group, 2000 to 2010

Age Group	2010	Change	
		Numeric	Percent
Total	1,712	-7	-0.4%
85+	25	-15	-37.5%
65 to 84	278	33	13.5%
46 to 64	494	91	22.6%
33 to 45	265	-47	-15.1%
19 to 32	239	-4	-1.6%
14 to 18	114	-20	-14.9%
11 to 13	67	-18	-21.2%
6 to 10	91	-39	-30.0%
0 to 5	139	12	9.4%

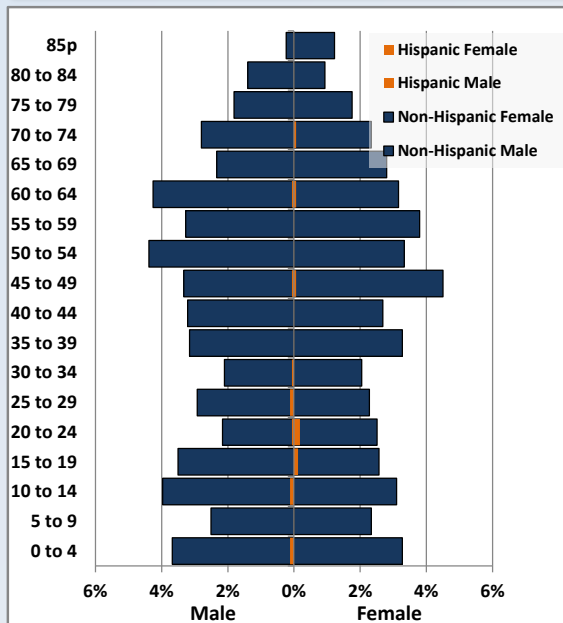
Population Total, 2000 and 2010



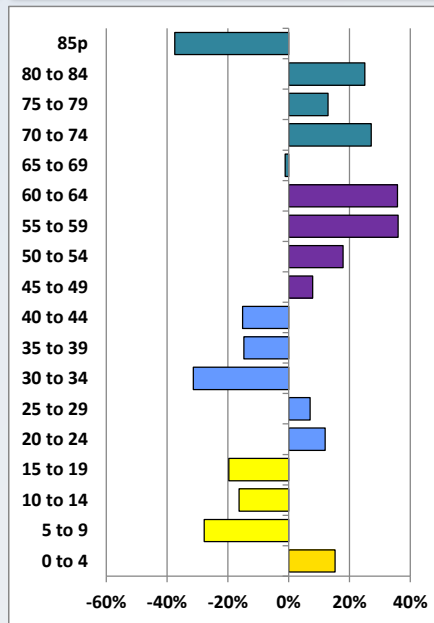
Demographic Profile

Knoxville Public Library

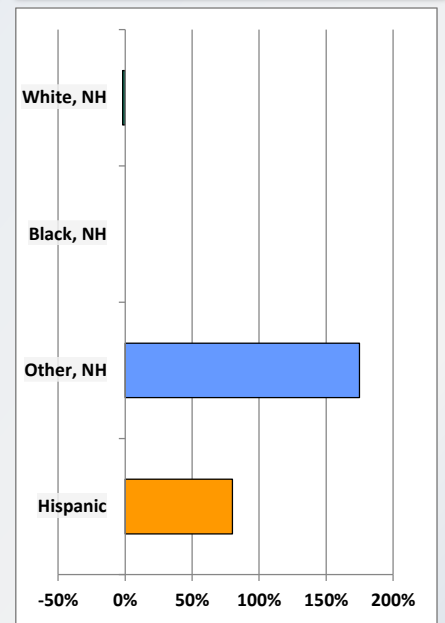
Population by 5-Year Age Cohorts



Pop Change by Age, 2000 to 2010

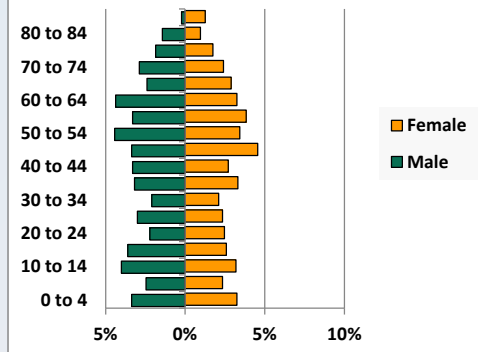


Pop Change by Race/Ethnicity, 2000 to 2010

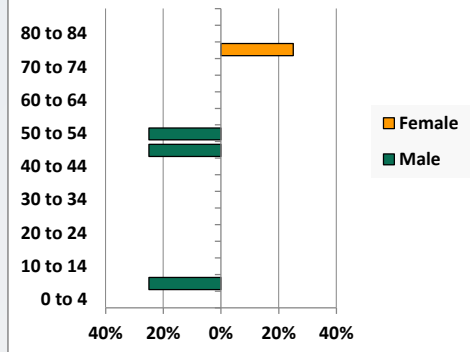


Population by Age, Race and Ethnicity 2010

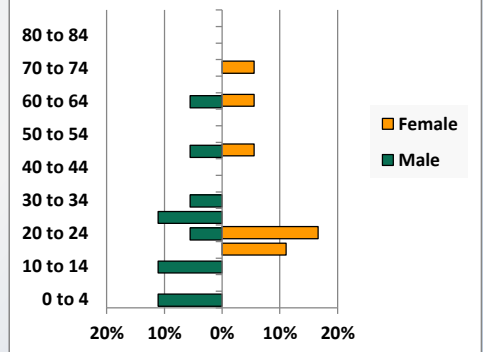
White, Not Hispanic



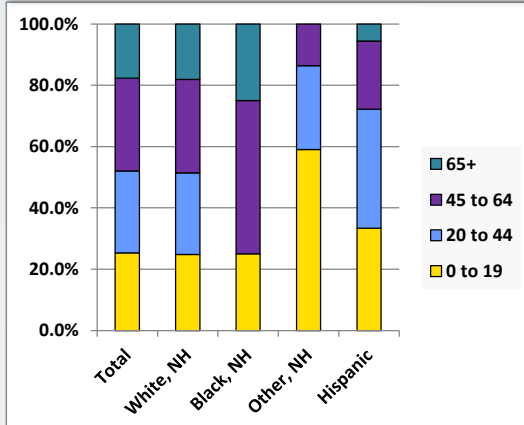
Black, Non-Hispanic



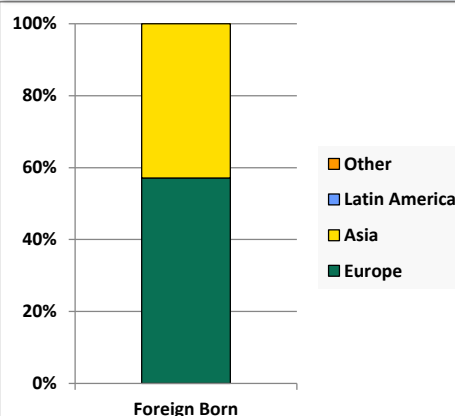
Hispanic



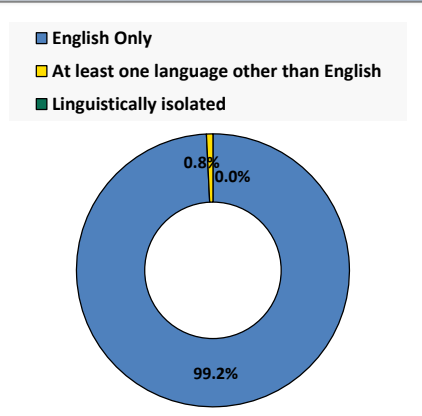
Age by Race and Ethnicity, 2010



Foreign Born, 2010



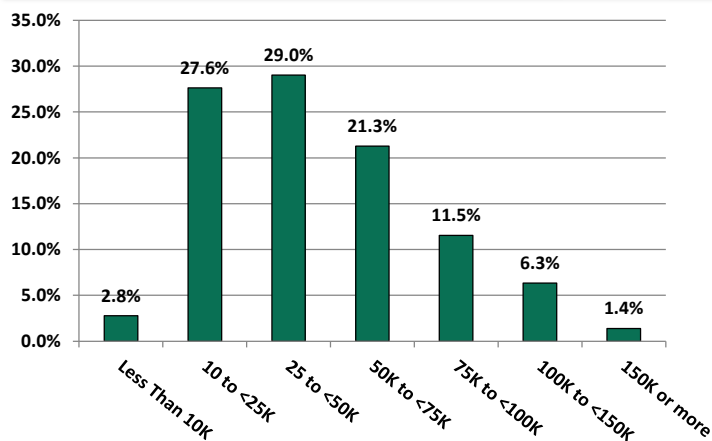
Household Language, 2010



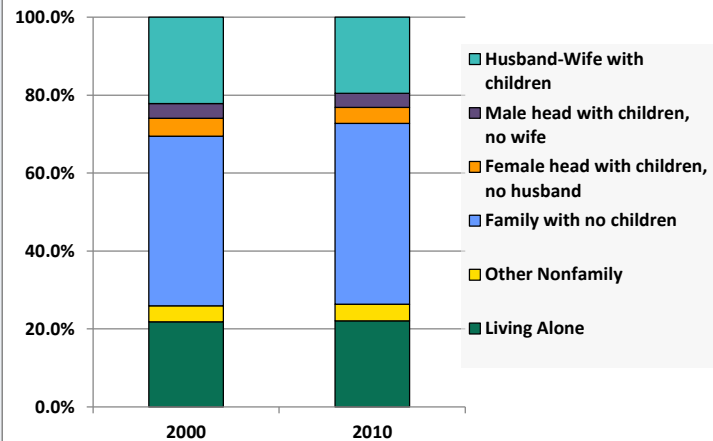
Demographic Profile

Knoxville Public Library

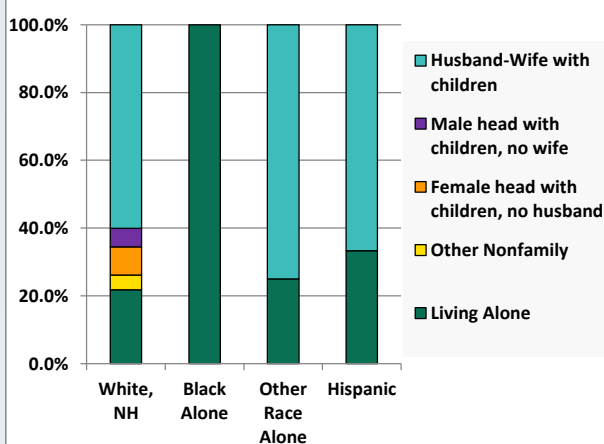
Household Income Distribution, 2008-2012



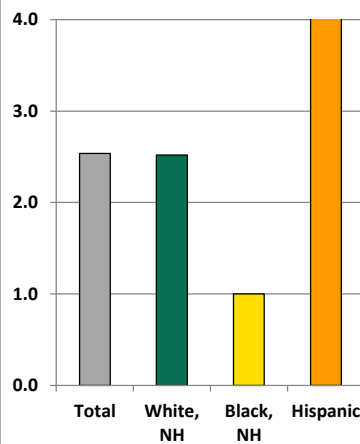
Household Type, 2000 and 2010



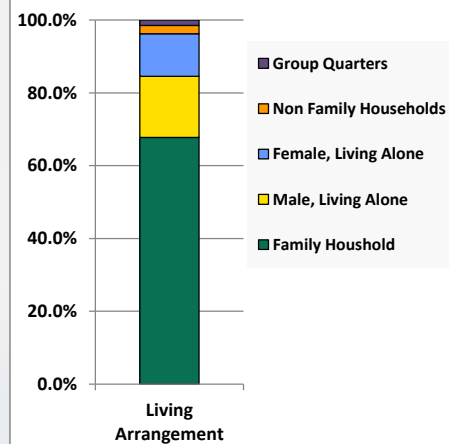
Household Type by Race/Ethnicity, 2010



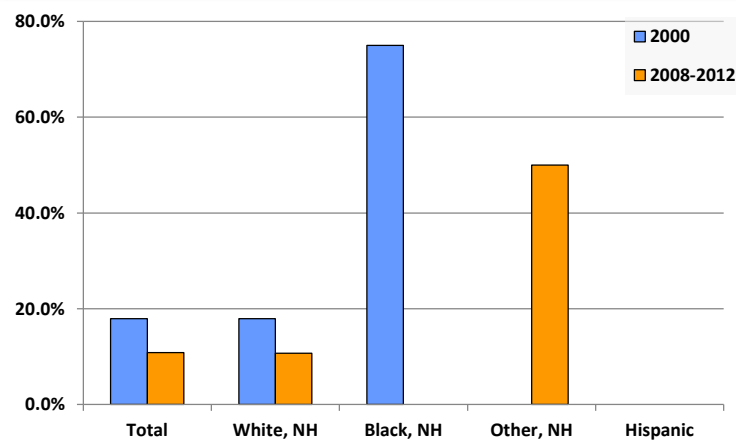
Average Household Size, 2010



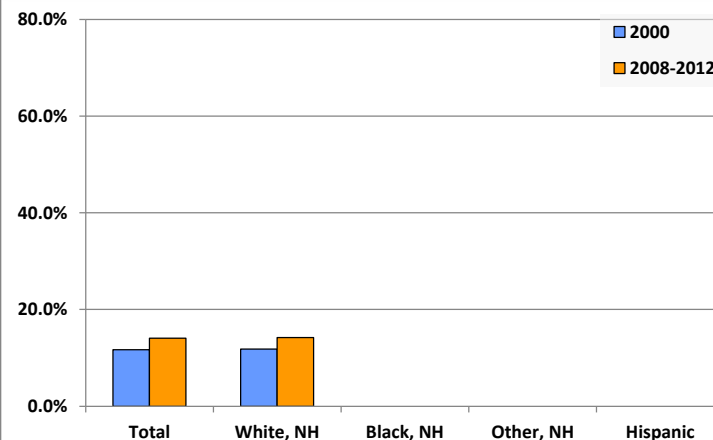
Living Arrangements 65+, 2008-2012



Percent of Adults that Did Not Complete High School



Percent of Adults Who Attained a Bachelor's Degree or Higher



Reference Data

Knoxville Public Library

	Total Population	White, Non- Hispanic	Black, Non- Hispanic	Other, Non- Hispanic	Detail for Other, Non-Hispanic					Hispanic or Latino
					AIAN	Asian	NHOPI	Some Other Race	Two or More Races	
A. Total Population										
2000 Total	1,719	1,697	4	8	1	0	0	0	7	10
2000 pct of Total	100.0%	98.7%	0.2%	0.5%	0.1%	0.0%	0.0%	0.0%	0.4%	0.6%
2010 Total	1,712	1,668	4	22	0	5	0	0	17	18
2010 pct of Total	100.0%	97.4%	0.2%	1.3%	0.0%	0.3%	0.0%	0.0%	1.0%	1.1%
B. Population by Major Age Groups by Race and Ethnicity										
2000										
0-19	499	489	2	2	0	0	0	0	2	6
20-64	935	925	2	4	1	0	0	0	3	4
65+	285	283	0	2	0	0	0	0	2	0
85+	40	40	0	0	0	0	0	0	0	0
2010										
0-19	433	413	1	13	0	1	0	0	12	6
20-64	976	954	2	9	0	4	0	0	5	11
65+	303	301	1	0	0	0	0	0	0	1
85+	25	25	0	0	0	0	0	0	0	0
C. Age Mix for Each Racial and Ethnic Group										
2000										
0-19	29.0%	28.8%	50.0%	25.0%	0.0%	0.0%	0.0%	0.0%	28.6%	60.0%
20-64	54.4%	54.5%	50.0%	50.0%	100.0%	0.0%	0.0%	0.0%	42.9%	40.0%
65+	16.6%	16.7%	0.0%	25.0%	0.0%	0.0%	0.0%	0.0%	28.6%	0.0%
85+	2.3%	2.4%	0.0%	0.0%	0.0%	0.0%	0.0%	0.0%	0.0%	0.0%
2010										
0-19	25.3%	24.8%	25.0%	59.1%	0.0%	20.0%	0.0%	0.0%	70.6%	33.3%
20-64	57.0%	57.2%	50.0%	40.9%	0.0%	80.0%	0.0%	0.0%	29.4%	61.1%
65+	17.7%	18.0%	25.0%	0.0%	0.0%	0.0%	0.0%	0.0%	0.0%	5.6%
85+	1.5%	1.5%	0.0%	0.0%	0.0%	0.0%	0.0%	0.0%	0.0%	0.0%
D. Racial and Ethnic Composition of Each Age Group										
2000										
0-19	100.0%	98.0%	0.4%	0.4%	0.0%	0.0%	0.0%	0.0%	0.4%	1.2%
20-64	100.0%	98.9%	0.2%	0.4%	0.1%	0.0%	0.0%	0.0%	0.3%	0.4%
65+	100.0%	99.3%	0.0%	0.7%	0.0%	0.0%	0.0%	0.0%	0.7%	0.0%
85+	100.0%	100.0%	0.0%	0.0%	0.0%	0.0%	0.0%	0.0%	0.0%	0.0%
2010										
0-19	100.0%	95.4%	0.2%	3.0%	0.0%	0.2%	0.0%	0.0%	2.8%	1.4%
20-64	100.0%	97.7%	0.2%	0.9%	0.0%	0.4%	0.0%	0.0%	0.5%	1.1%
65+	100.0%	99.3%	0.3%	0.0%	0.0%	0.0%	0.0%	0.0%	0.0%	0.3%
85+	100.0%	100.0%	0.0%	0.0%	0.0%	0.0%	0.0%	0.0%	0.0%	0.0%
E. Population Growth										
2000-2010, Change										
0-19	-66	-76	-1	11	0	1	0	0	10	0
20-64	41	29	0	5	-1	4	0	0	2	7
65+	18	18	1	-2	0	0	0	0	-2	1
85+	-15	-15	0	0	0	0	0	0	0	0
Total	-7	-29	0	14	-1	5	0	0	10	8
2000-2010, Pct Change										
0-19	-13.2%	-15.5%	-50.0%	550.0%	0.0%	0.0%	0.0%	0.0%	500.0%	0.0%
20-64	4.4%	3.1%	0.0%	125.0%	-100.0%	0.0%	0.0%	0.0%	66.7%	175.0%
65+	6.3%	6.4%	0.0%	-100.0%	0.0%	0.0%	0.0%	0.0%	-100.0%	0.0%
85+	-37.5%	-37.5%	0.0%	0.0%	0.0%	0.0%	0.0%	0.0%	0.0%	0.0%
Total	-0.4%	-1.7%	0.0%	175.0%	-100.0%	0.0%	0.0%	0.0%	142.9%	80.0%

Source: Decennial Census 2010, 2000, American Community Survey 2008-2012

Prepared for the Pennsylvania State Library by The Pennsylvania State Data Center, 9/2014

Reference Data

Knoxville Public Library

	Total Population	White, Non- Hispanic	Black, Non- Hispanic	Other, Non- Hispanic	Detail for Other, Non-Hispanic					Hispanic or Latino
					AIAN	Asian	NHOPI	Some Other Race	Two or More Races	
F. Population by Library-Defined Age Groups, 2010										
0-5	139	127	1	9	0	1	0	0	8	2
6-10	91	87	0	3	0	0	0	0	3	1
11-13	67	66	0	0	0	0	0	0	0	1
14-18	114	113	0	1	0	0	0	0	1	0
19-32	239	228	0	3	0	1	0	0	2	8
33-45	265	259	0	4	0	3	0	0	1	2
46-64	494	487	2	2	0	0	0	0	2	3
65-84	278	276	1	0	0	0	0	0	0	1
85+	25	25	0	0	0	0	0	0	0	0
Total	1,712	1,668	4	22	0	5	0	0	17	18
G. Population by 5-Year Age Cohorts, 2010										
0-4	121	110	0	9	0	1	0	0	8	2
5-9	83	80	1	2	0	0	0	0	2	0
10-14	123	120	0	1	0	0	0	0	1	2
15-19	106	103	0	1	0	0	0	0	1	2
20-24	84	78	0	2	0	0	0	0	2	4
25-29	91	89	0	0	0	0	0	0	0	2
30-34	72	70	0	1	0	1	0	0	0	1
35-39	110	108	0	2	0	2	0	0	0	0
40-44	101	100	0	1	0	0	0	0	1	0
45-49	136	132	1	1	0	1	0	0	0	2
50-54	132	131	1	0	0	0	0	0	0	0
55-59	121	119	0	2	0	0	0	0	2	0
60-64	129	127	0	0	0	0	0	0	0	2
65-69	88	88	0	0	0	0	0	0	0	0
70-74	89	88	0	0	0	0	0	0	0	1
75-79	61	60	1	0	0	0	0	0	0	0
80-84	40	40	0	0	0	0	0	0	0	0
85-89	17	17	0	0	0	0	0	0	0	0
90-94	8	8	0	0	0	0	0	0	0	0
95-99	0	0	0	0	0	0	0	0	0	0
100+	0	0	0	0	0	0	0	0	0	0
Total	1,712	1,668	4	22	0	5	0	0	17	18

Source: Decennial Census 2010, 2000, American Community Survey 2008-2012

Prepared for the Pennsylvania State Library by The Pennsylvania State Data Center, 9/2014

Reference Data

Knoxville Public Library

H. Income Distribution, 2008-2012

Range (in thousands)	Households	Pct of Total
<\$10K	22	2.8%
\$10K to <\$25K	218	27.6%
\$25K to <\$50K	229	29.0%
\$50K to <\$75K	168	21.3%
\$75K to <\$100K	91	11.5%
\$100K to <\$150K	50	6.3%
\$150K+	11	1.4%

I. Household Type, 2010

Household Type	2000	2000pct	2010	2010pct
Total Households	655	100.0%	675	100.0%
Family Households	485	74.0%	497	73.6%
Husband-wife, no children w/children	145	22.1%	132	19.6%
Female head, no husband, w/ children	30	4.6%	28	4.1%
Male head, no wife, w/ children	25	3.8%	24	3.6%
Without children	285	43.5%	313	46.4%
Nonfamily households	170	26.0%	178	26.4%
Living alone	143	21.8%	149	22.1%
Other nonfamily	27	4.1%	29	4.3%

J. Household Type by Race and Ethnicity, 2008-2012

Household Type	White, NH	Black, NH	Other, NH	Hispanic
Total Households	668	1	4	3
Husband wife family	60.0%	0.0%	75.0%	66.7%
Family with male head, no wife	5.5%	0.0%	0.0%	0.0%
family with female head, no husband	8.2%	0.0%	0.0%	0.0%
Living alone	21.9%	100.0%	25.0%	33.3%
Other nonfamily	4.3%	0.0%	0.0%	0.0%

K. Poverty, 2008-2012

Families	Poverty	PA
All families	10.4%	9.1%
Families w/ related children	21.1%	15.3%
Female householder, no husband present	43.5%	28.8%
Female householder, no husband present, w/ related children	52.9%	39.2%
All people	14.0%	13.1%
Under 18 years	27.8%	18.4%
18 to 64 years	11.1%	12.3%
65 years and over	6.7%	8.4%

L. Educational Attainment by Race and Ethnicity, 2008-2012

Education Level	White, NH	Black	Other	Hispanic	Total
Population 25 years and over	1,280	2	6	4	1,292
Less than high school	10.7%	0.0%	50%	0.0%	10.8%
High school graduate (includes equivalency	47.5%	100.0%	33%	100.0%	47.7%
Some college or associates degree	27.6%	0.0%	17%	0.0%	27.4%
Bachelors degree or higher	14.2%	0.0%	0%	0.0%	14.1%

M. Occupation, 2008-2012

Occupation	Estimate	Percent
Civilian population age 16 years and over	814	100.0%
Management, professional, and related occupations	196	24.1%
Service occupations	75	9.2%
Sales and office occupations	187	23.0%
Farming, fishing, and forestry occupations	35	4.3%
Construction, extraction, maintenance, and repair occupations	90	11.1%
Production, transportation, and material moving occupations	231	28.4%

N. Class of Worker, 2008-2012

Occupation	Estimate	Percent
Civilian population age 16 years and over	814	100.0%
Private, for profit, wage and salary employee	556	68.3%
Private, not for profit, wage and salary employee	26	3.2%
Private, for profit, wage and salary self-employed in own business	30	3.7%
Government workers	68	8.4%
Self-employed in own not incorporated business	132	16.2%
Unpaid family workers in family business	2	0.2%

Source: Decennial Census 2010, 2000, American Community Survey 2008-2012
Prepared for the Pennsylvania State Library by The Pennsylvania State Data Center, 9/2014