

## Demographic Profile Lilly Washington Public Library

**Population Growth:** The total population of the Lilly Washington Public Library service area increased by 2.1 percent over the past decade to 968; this growth rate was lower than the statewide rate of 3.4 percent.

**Age and Sex:** In 2010, the Lilly Washington Public Library service area had a total population of 968 - 463 males (47.8 percent) and 505 females (52.2 percent). The age structure of the population in 2010 was as follows: 24.7 percent of the population was under 20 years old, 57.1 percent was 20 to 64 years old and 18.2 percent was 65 years or older.

**Race and Ethnicity:** For people reporting one race alone, not of Hispanic ethnicity, 99.5 percent were White; .0 percent were Black or African American; .3 percent were Other Race Alone.<sup>1</sup> A total of 2 or .2 percent of the population were Hispanic.<sup>2</sup>

**Households:** In 2010, there were 407 households in the Lilly Washington Public Library service area. The average household size was 2.36 people. Families made up 65.6 percent of the households. This figure includes both families with (26.5 percent) and without (39.1 percent) children. Of families with children less than 18 years old, 18.7 percent were married-couple families, 5.4 percent were female householder families with no husband present, and the remaining (2.5 percent) were male-headed households with no wife present.

**Education:** The educational attainment of the population 25 years and over was lower in the Lilly Washington Public Library service area than in Pennsylvania. During the period 2008-2012, 13.2 percent of residents had earned a Bachelor's degree or higher, compared with 27.0 percent statewide. A total of 39 or 6.1 percent had not completed high school, compared with 11.7 percent for the commonwealth as a whole.

**Income and Poverty:** Households with incomes of less than \$25,000 (31.7 percent) made up the largest percent of households in the Lilly Washington Public Library service area in 2008-2012. For comparison, 23.6 percent of commonwealth households were in this range during the period.

In 2008-2012, the overall poverty rate for the Lilly Washington Public Library service area was lower than Pennsylvania (10.4 percent compared to 13.1 percent). The poverty rate for the population under 18 years of age was 4.8 percent, compared with 14.1 percent of people 18 to 64 years and 5.7 percent for those aged 65 years and over. A total of 8 or 3.7 percent of all families had incomes below poverty level. In 2008-2012, 4.1 percent of families with related children and 25.0 percent of families with a female householder and no husband with related children present had incomes below the poverty level.

**Class of Worker and Occupation:** In 2008-2012, 71.7 percent of the workforce was private wage and salary workers; 17.5 percent were federal, state, or local government workers; and 10.0 percent were self-employed in their own (not incorporated) business.

The top occupation group for the civilian employed population 16 years and over in the Lilly Washington Public Library service area in 2008-2012 was Service-related (35.2 percent).

---

<sup>1</sup> Other race includes those who identified themselves as American Indian/Alaska Native, Asian, Native Hawaiian/Other Pacific Islander, Some Other Race and Two or More Races on the 2010 Census form.

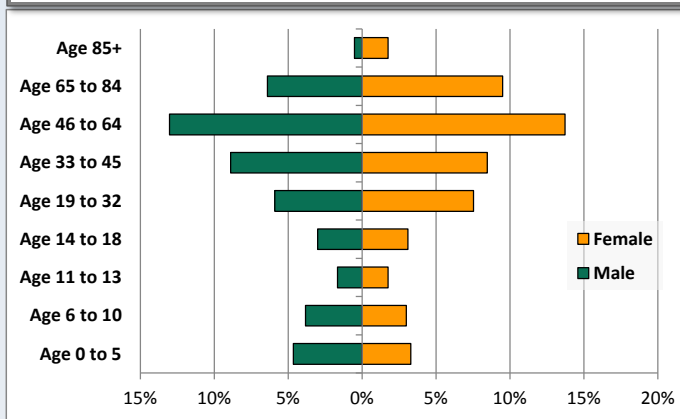
<sup>2</sup> People of Hispanic origin may be of any race.

# Demographic Profile

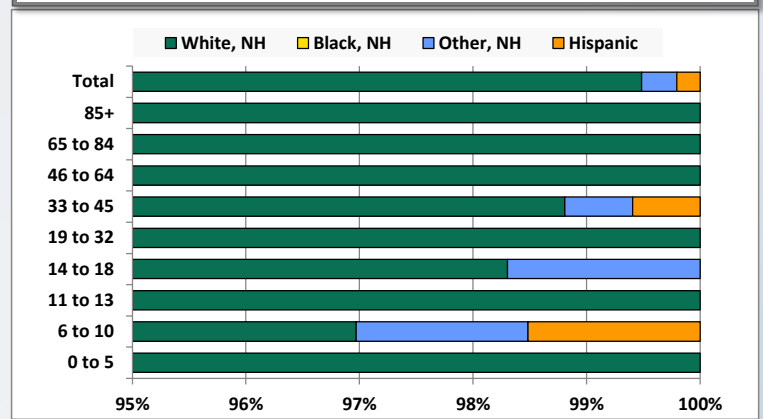
Lilly Washington Public Library

Key Indicators		
	2000	2010
<b>Population Growth</b>		
Total Population	948	968
10-Year Growth	N/A	2.1%
<b>Diversity</b>		
White Alone, Non-Hispanic	99.5%	99.5%
Black Alone, Non-Hispanic	0.0%	0.0%
Other Race Alone, Non-Hispanic	0.5%	0.3%
Percent Hispanic	0.0%	0.2%
<b>Aging</b>		
Percent 65 Years and Over	20.9%	18.2%
<b>Households</b>		
Percent Married Couple with Own Children	18.2%	18.7%
Percent Living Alone	31.9%	30.2%

Population by Library-Defined Age Group, 2010



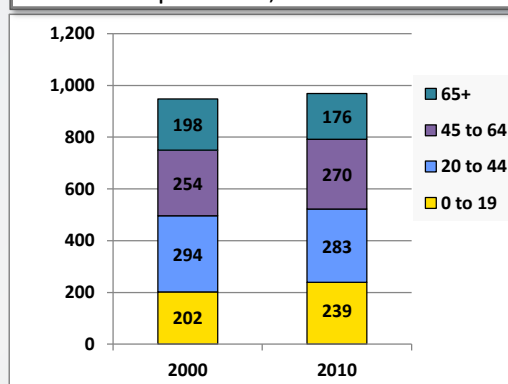
Race/Ethnicity by Library-Defined Age Group, 2010



Population Growth by Library-Defined Age Group, 2000 to 2010

Age Group	2010	Change	
		Numeric	Percent
Total	968	20	2.1%
85+	22	-4	-15.4%
65 to 84	154	-18	-10.5%
46 to 64	259	21	8.8%
33 to 45	168	4	2.4%
19 to 32	130	-31	-19.3%
14 to 18	59	-2	-3.3%
11 to 13	33	11	50.0%
6 to 10	66	17	34.7%
0 to 5	77	22	40.0%

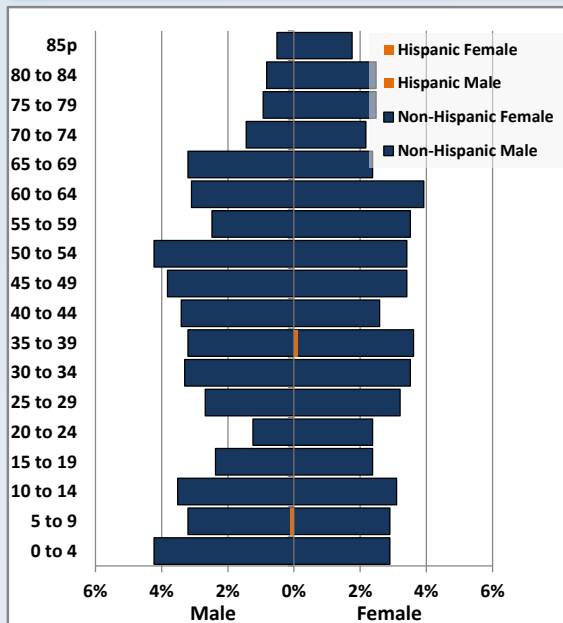
Population Total, 2000 and 2010



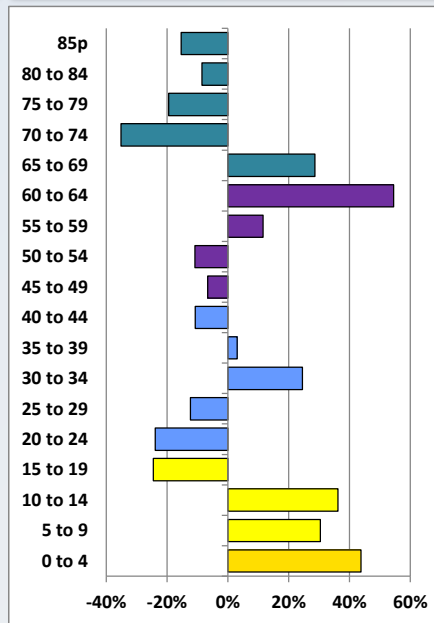
# Demographic Profile

Lilly Washington Public Library

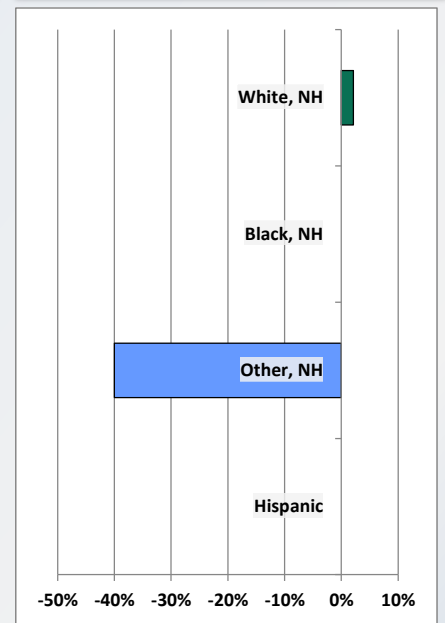
Population by 5-Year Age Cohorts



Pop Change by Age, 2000 to 2010

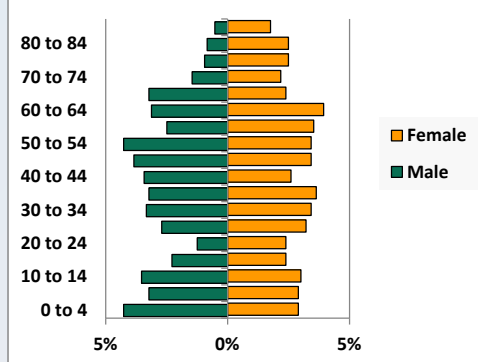


Pop Change by Race/Ethnicity, 2000 to 2010

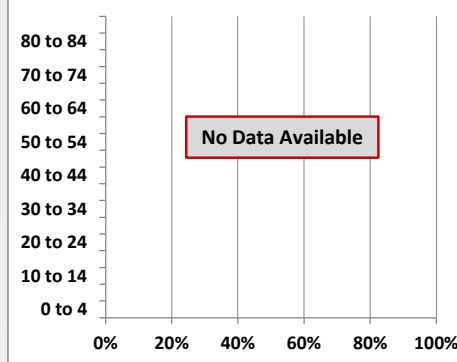


Population by Age, Race and Ethnicity 2010

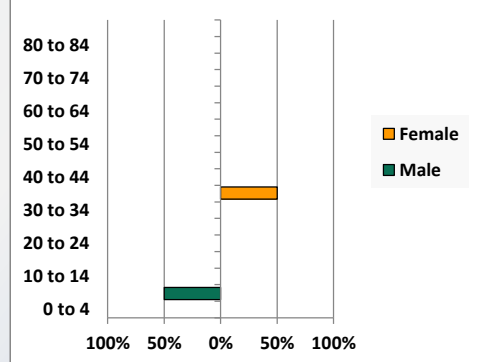
White, Not Hispanic



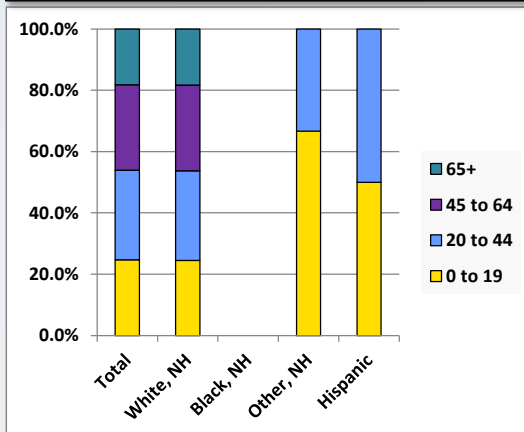
Black, Non-Hispanic



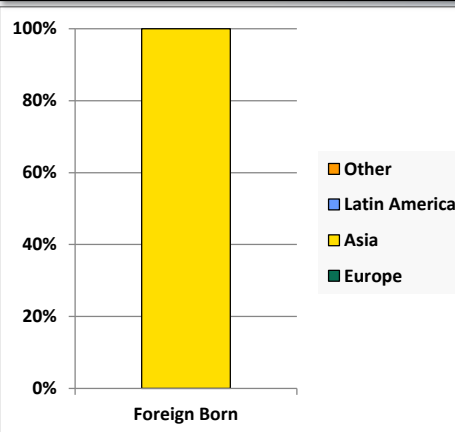
Hispanic



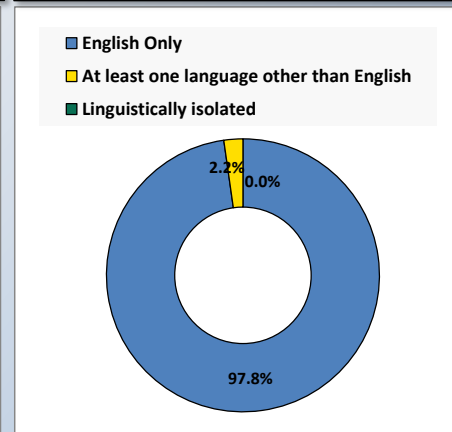
Age by Race and Ethnicity, 2010



Foreign Born, 2010



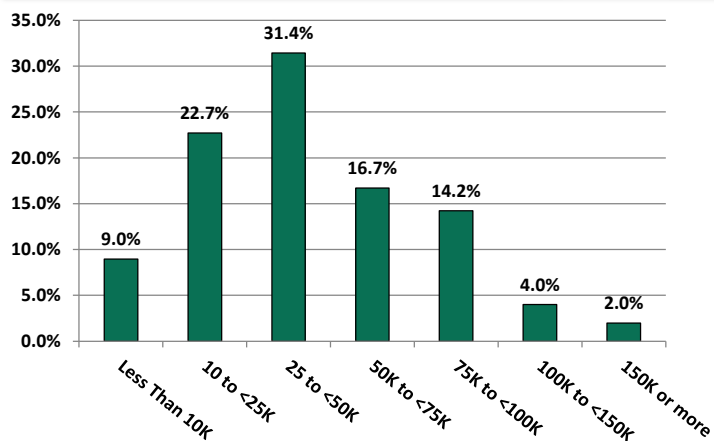
Household Language, 2010



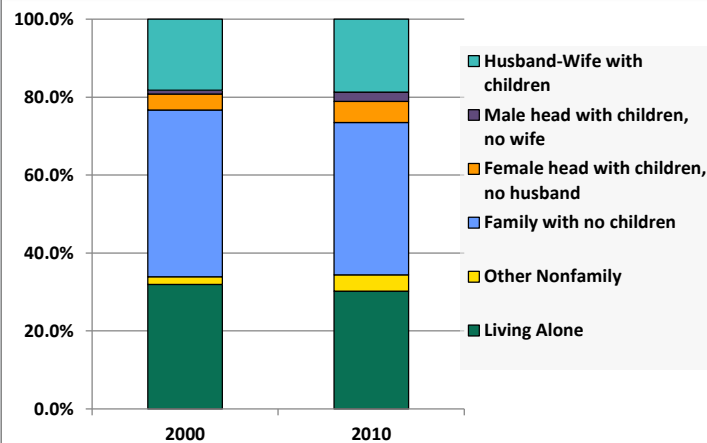
# Demographic Profile

Lilly Washington Public Library

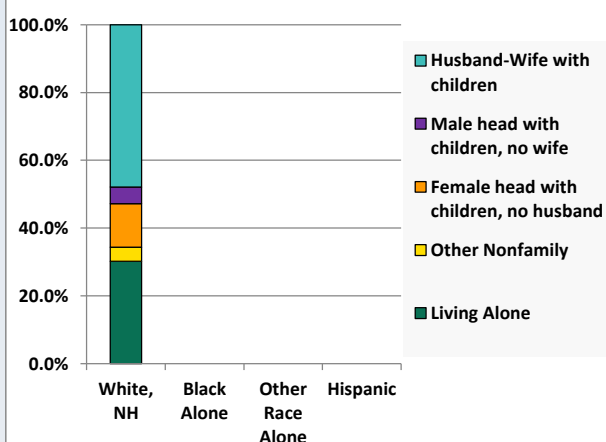
Household Income Distribution, 2008-2012



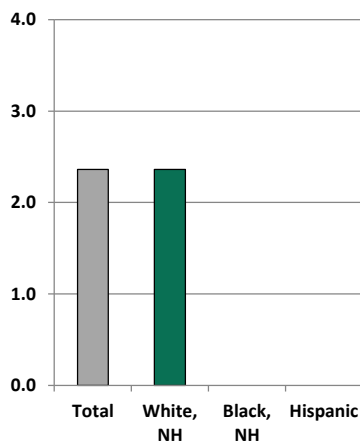
Household Type, 2000 and 2010



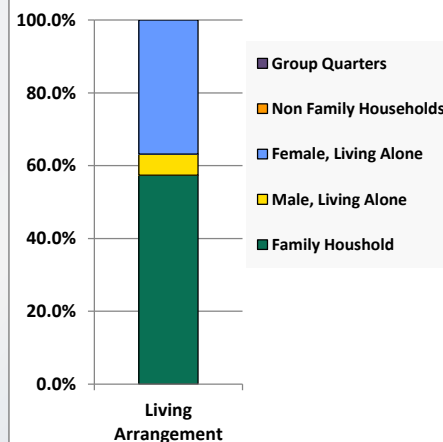
Household Type by Race/Ethnicity, 2010



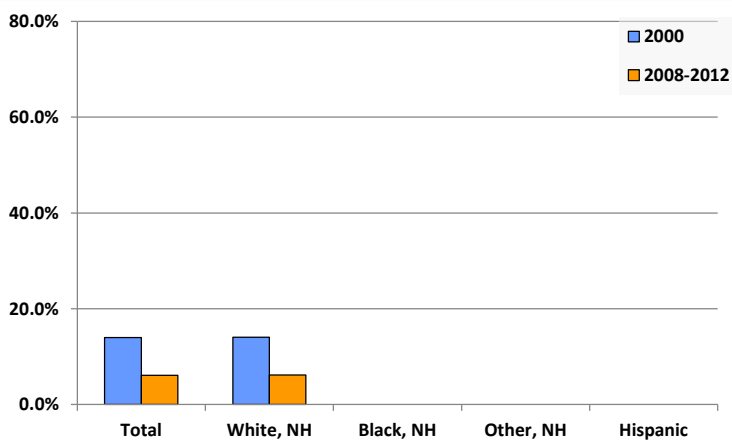
Average Household Size, 2010



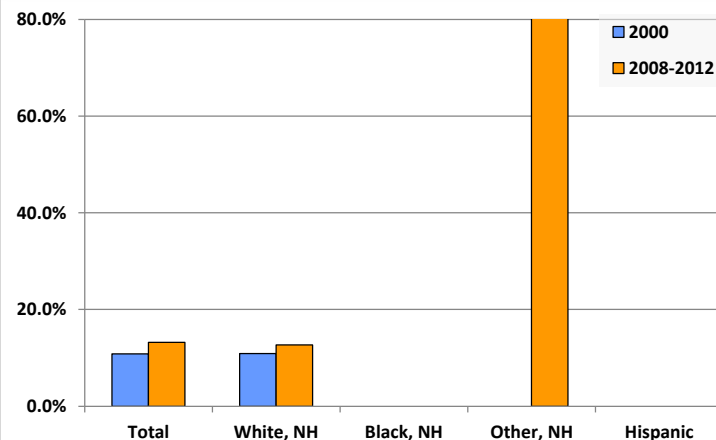
Living Arrangements 65+, 2008-2012



Percent of Adults that Did Not Complete High School



Percent of Adults Who Attained a Bachelor's Degree or Higher



# Reference Data

## Lilly Washington Public Library

					Detail for Other, Non-Hispanic					
	Total Population	White, Non- Hispanic	Black, Non- Hispanic	Other, Non- Hispanic	AIAN	Asian	Some Other			Hispanic or Latino
							NHOPI	Race	Two or More Races	
A. Total Population										
2000 Total	948	943	0	5	2	1	1	0	1	0
2000 pct of Total	100.0%	99.5%	0.0%	0.5%	0.2%	0.1%	0.1%	0.0%	0.1%	0.0%
2010 Total	968	963	0	3	0	0	0	0	3	2
2010 pct of Total	100.0%	99.5%	0.0%	0.3%	0.0%	0.0%	0.0%	0.0%	0.3%	0.2%
B. Population by Major Age Groups by Race and Ethnicity										
2000										
0-19	202	201	0	1	0	0	0	0	1	0
20-64	548	546	0	2	1	0	1	0	0	0
65+	198	196	0	2	1	1	0	0	0	0
85+	26	25	0	1	0	1	0	0	0	0
2010										
0-19	239	236	0	2	0	0	0	0	2	1
20-64	553	551	0	1	0	0	0	0	1	1
65+	176	176	0	0	0	0	0	0	0	0
85+	22	22	0	0	0	0	0	0	0	0
C. Age Mix for Each Racial and Ethnic Group										
2000										
0-19	21.3%	21.3%	0.0%	20.0%	0.0%	0.0%	0.0%	0.0%	100.0%	0.0%
20-64	57.8%	57.9%	0.0%	40.0%	50.0%	0.0%	100.0%	0.0%	0.0%	0.0%
65+	20.9%	20.8%	0.0%	40.0%	50.0%	100.0%	0.0%	0.0%	0.0%	0.0%
85+	2.7%	2.7%	0.0%	20.0%	0.0%	100.0%	0.0%	0.0%	0.0%	0.0%
2010										
0-19	24.7%	24.5%	0.0%	66.7%	0.0%	0.0%	0.0%	0.0%	66.7%	50.0%
20-64	57.1%	57.2%	0.0%	33.3%	0.0%	0.0%	0.0%	0.0%	33.3%	50.0%
65+	18.2%	18.3%	0.0%	0.0%	0.0%	0.0%	0.0%	0.0%	0.0%	0.0%
85+	2.3%	2.3%	0.0%	0.0%	0.0%	0.0%	0.0%	0.0%	0.0%	0.0%
D. Racial and Ethnic Composition of Each Age Group										
2000										
0-19	100.0%	99.5%	0.0%	0.5%	0.0%	0.0%	0.0%	0.0%	0.5%	0.0%
20-64	100.0%	99.6%	0.0%	0.4%	0.2%	0.0%	0.2%	0.0%	0.0%	0.0%
65+	100.0%	99.0%	0.0%	1.0%	0.5%	0.5%	0.0%	0.0%	0.0%	0.0%
85+	100.0%	96.2%	0.0%	3.8%	0.0%	3.8%	0.0%	0.0%	0.0%	0.0%
2010										
0-19	100.0%	98.7%	0.0%	0.8%	0.0%	0.0%	0.0%	0.0%	0.8%	0.4%
20-64	100.0%	99.6%	0.0%	0.2%	0.0%	0.0%	0.0%	0.0%	0.2%	0.2%
65+	100.0%	100.0%	0.0%	0.0%	0.0%	0.0%	0.0%	0.0%	0.0%	0.0%
85+	100.0%	100.0%	0.0%	0.0%	0.0%	0.0%	0.0%	0.0%	0.0%	0.0%
E. Population Growth										
2000-2010, Change										
0-19	37	35	0	1	0	0	0	0	1	1
20-64	5	5	0	-1	-1	0	-1	0	1	1
65+	-22	-20	0	-2	-1	-1	0	0	0	0
85+	-4	-3	0	-1	0	-1	0	0	0	0
Total	20	20	0	-2	-2	-1	-1	0	2	2
2000-2010, Pct Change										
0-19	18.3%	17.4%	0.0%	100.0%	0.0%	0.0%	0.0%	0.0%	100.0%	0.0%
20-64	0.9%	0.9%	0.0%	-50.0%	-100.0%	0.0%	-100.0%	0.0%	0.0%	0.0%
65+	-11.1%	-10.2%	0.0%	-100.0%	-100.0%	-100.0%	0.0%	0.0%	0.0%	0.0%
85+	-15.4%	-12.0%	0.0%	-100.0%	0.0%	-100.0%	0.0%	0.0%	0.0%	0.0%
Total	2.1%	2.1%	0.0%	-40.0%	-100.0%	-100.0%	-100.0%	0.0%	200.0%	0.0%

# Reference Data

## Lilly Washington Public Library

	Total Population	White, Non- Hispanic	Black, Non- Hispanic	Other, Non- Hispanic	Detail for Other, Non-Hispanic					Hispanic or Latino
					AIAN	Asian	NHOPI	Some Other	Two or More	
								Race	Races	
F. Population by Library-Defined Age Groups, 2010										
0-5	77	77	0	0	0	0	0	0	0	0
6-10	66	64	0	1	0	0	0	0	1	1
11-13	33	33	0	0	0	0	0	0	0	0
14-18	59	58	0	1	0	0	0	0	1	0
19-32	130	130	0	0	0	0	0	0	0	0
33-45	168	166	0	1	0	0	0	0	1	1
46-64	259	259	0	0	0	0	0	0	0	0
65-84	154	154	0	0	0	0	0	0	0	0
85+	22	22	0	0	0	0	0	0	0	0
Total	968	963	0	3	0	0	0	0	3	2
G. Population by 5-Year Age Cohorts, 2010										
0-4	69	69	0	0	0	0	0	0	0	0
5-9	60	59	0	0	0	0	0	0	0	1
10-14	64	63	0	1	0	0	0	0	1	0
15-19	46	45	0	1	0	0	0	0	1	0
20-24	35	35	0	0	0	0	0	0	0	0
25-29	57	57	0	0	0	0	0	0	0	0
30-34	66	65	0	1	0	0	0	0	1	0
35-39	67	66	0	0	0	0	0	0	0	1
40-44	58	58	0	0	0	0	0	0	0	0
45-49	70	70	0	0	0	0	0	0	0	0
50-54	74	74	0	0	0	0	0	0	0	0
55-59	58	58	0	0	0	0	0	0	0	0
60-64	68	68	0	0	0	0	0	0	0	0
65-69	54	54	0	0	0	0	0	0	0	0
70-74	35	35	0	0	0	0	0	0	0	0
75-79	33	33	0	0	0	0	0	0	0	0
80-84	32	32	0	0	0	0	0	0	0	0
85-89	15	15	0	0	0	0	0	0	0	0
90-94	7	7	0	0	0	0	0	0	0	0
95-99	0	0	0	0	0	0	0	0	0	0
100+	0	0	0	0	0	0	0	0	0	0
Total	968	963	0	3	0	0	0	0	3	2

# Reference Data

Lilly Washington Public Library

## H. Income Distribution, 2008-2012

Range (in thousands)	Households	Pct of Total
<\$10K	36	9.0%
\$10K to <\$25K	91	22.7%
\$25K to <\$50K	126	31.4%
\$50K to <\$75K	67	16.7%
\$75K to <\$100K	57	14.2%
\$100K to <\$150K	16	4.0%
\$150K+	8	2.0%

## I. Household Type, 2010

Household Type	2000	2000pct	2010	2010pct
Total Households	407	100.0%	407	100.0%
Family Households	269	66.1%	267	65.6%
Husband-wife, no children w/children	74	18.2%	76	18.7%
Female head, no husband, w/ children	17	4.2%	22	5.4%
Male head, no wife, w/ children	4	1.0%	10	2.5%
Without children	174	42.8%	159	39.1%
Nonfamily households	138	33.9%	140	34.4%
Living alone	130	31.9%	123	30.2%
Other nonfamily	8	2.0%	17	4.2%

## J. Household Type by Race and Ethnicity, 2008-2012

Household Type	White, NH	Black, NH	Other, NH	Hispanic
Total Households	407	0	0	0
Husband wife family	47.9%	0.0%	0.0%	0.0%
Family with male head, no wife	4.9%	0.0%	0.0%	0.0%
family with female head, no husband	12.8%	0.0%	0.0%	0.0%
Living alone	30.2%	0.0%	0.0%	0.0%
Other nonfamily	4.2%	0.0%	0.0%	0.0%

## K. Poverty, 2008-2012

Families	Poverty	PA
All families	3.7%	9.1%
Families w/ related children	4.1%	15.3%
Female householder, no husband present	14.3%	28.8%
Female householder, no husband present, w/ related children	25.0%	39.2%
All people	10.4%	13.1%
Under 18 years	4.8%	18.4%
18 to 64 years	14.1%	12.3%
65 years and over	5.7%	8.4%

## L. Educational Attainment by Race and Ethnicity, 2008-2012

Education Level	White, NH	Black	Other	Hispanic	Total
Population 25 years and over	632	0	4	0	636
Less than high school	6.2%	0.0%	0%	0.0%	6.1%
High school graduate (includes equivalency)	60.1%	0.0%	0%	0.0%	59.7%
Some college or associates degree	21.0%	0.0%	0%	0.0%	20.9%
Bachelors degree or higher	12.7%	0.0%	100%	0.0%	13.2%

## M. Occupation, 2008-2012

Occupation	Estimate	Percent
Civilian population age 16 years and over	389	100.0%
Management, professional, and related occupations	80	20.6%
Service occupations	137	35.2%
Sales and office occupations	80	20.6%
Farming, fishing, and forestry occupations	0	0.0%
Construction, extraction, maintenance, and repair occupations	33	8.5%
Production, transportation, and material moving occupations	59	15.2%

## N. Class of Worker, 2008-2012

Occupation	Estimate	Percent
Civilian population age 16 years and over	389	100.0%
Private, for profit, wage and salary employee	248	63.8%
Private, not for profit, wage and salary employee	31	8.0%
Private, for profit, wage and salary self-employed in own business	0	0.0%
Government workers	68	17.5%
Self-employed in own not incorporated business	39	10.0%
Unpaid family workers in family business	3	0.8%