

Demographic Profile Linesville Community Public Library

Population Growth: The total population of the Linesville Community Public Library service area decreased by -3.7 percent over the past decade to 5,453; this decline rate was lower than the statewide rate of 3.4 percent.

Age and Sex: In 2010, the Linesville Community Public Library service area had a total population of 5,453 - 2,700 males (49.5 percent) and 2,753 females (50.5 percent). The age structure of the population in 2010 was as follows: 20.8 percent of the population was under 20 years old, 56.1 percent was 20 to 64 years old and 23.1 percent was 65 years or older.

Race and Ethnicity: For people reporting one race alone, not of Hispanic ethnicity, 97.9 percent were White; .1 percent were Black or African American; 1.4 percent were Other Race Alone.¹ A total of 28 or .5 percent of the population were Hispanic.²

Households: In 2010, there were 2,434 households in the Linesville Community Public Library service area. The average household size was 2.24 people. Families made up 64.1 percent of the households. This figure includes both families with (20.9 percent) and without (43.1 percent) children. Of families with children less than 18 years old, 13.8 percent were married-couple families, 4.6 percent were female householder families with no husband present, and the remaining (2.5 percent) were male-headed households with no wife present.

Education: The educational attainment of the population 25 years and over was lower in the Linesville Community Public Library service area than in Pennsylvania. During the period 2008-2012, 13.5 percent of residents had earned a Bachelor's degree or higher, compared with 27.0 percent statewide. A total of 478 or 12.7 percent had not completed high school, compared with 11.7 percent for the commonwealth as a whole.

Income and Poverty: Households with incomes of \$25,000 to \$49,999 (31.9 percent) made up the largest percent of households in the Linesville Community Public Library service area in 2008-2012. For comparison, 24.4 percent of commonwealth households were in this range during the period.

In 2008-2012, the overall poverty rate for the Linesville Community Public Library service area was higher than Pennsylvania (16.7 percent compared to 13.1 percent). The poverty rate for the population under 18 years of age was 31.3 percent, compared with 15.3 percent of people 18 to 64 years and 8.1 percent for those aged 65 years and over. A total of 160 or 11.0 percent of all families had incomes below poverty level. In 2008-2012, 27.0 percent of families with related children and 50.6 percent of families with a female householder and no husband with related children present had incomes below the poverty level.

Class of Worker and Occupation: In 2008-2012, 80.0 percent of the workforce was private wage and salary workers; 11.3 percent were federal, state, or local government workers; and 8.8 percent were self-employed in their own (not incorporated) business.

The top occupation group for the civilian employed population 16 years and over in the Linesville Community Public Library service area in 2008-2012 was Management, business, science, and arts (25.3 percent).

¹ Other race includes those who identified themselves as American Indian/Alaska Native, Asian, Native Hawaiian/Other Pacific Islander, Some Other Race and Two or More Races on the 2010 Census form.

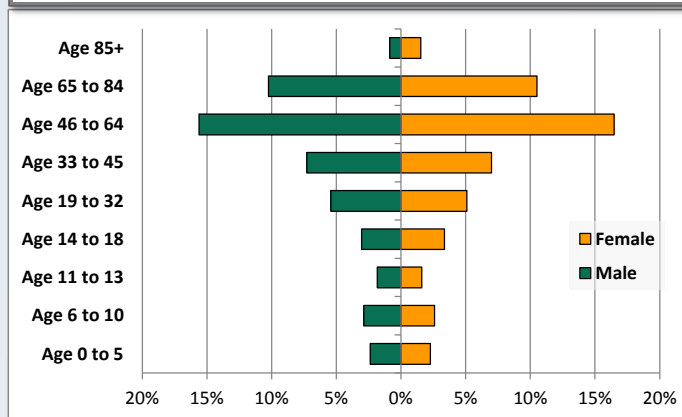
² People of Hispanic origin may be of any race.

Demographic Profile

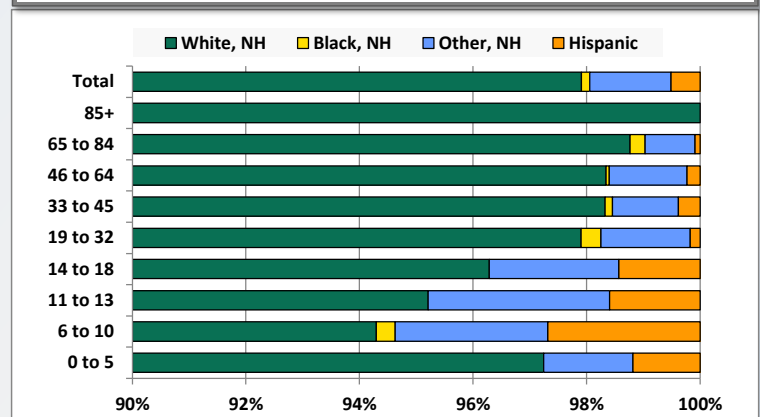
Linesville Community Public Library

Key Indicators		
	2000	2010
Population Growth		
Total Population	5,661	5,453
10-Year Growth	N/A	-3.7%
Diversity		
White Alone, Non-Hispanic	97.9%	97.9%
Black Alone, Non-Hispanic	0.4%	0.1%
Other Race Alone, Non-Hispanic	1.3%	1.4%
Percent Hispanic	0.4%	0.5%
Aging		
Percent 65 Years and Over	21.3%	23.1%
Households		
Percent Married Couple with Own Children	18.4%	13.8%
Percent Living Alone	26.2%	30.0%

Population by Library-Defined Age Group, 2010



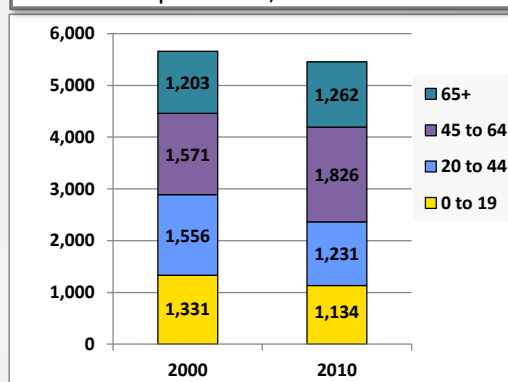
Race/Ethnicity by Library-Defined Age Group, 2010



Population Growth by Library-Defined Age Group, 2000 to 2010

Age Group	2010	Change	
		Numeric	Percent
Total	5,453	-208	-3.7%
85+	130	37	39.8%
65 to 84	1,132	22	2.0%
46 to 64	1,750	272	18.4%
33 to 45	778	-232	-23.0%
19 to 32	573	-106	-15.6%
14 to 18	350	-24	-6.4%
11 to 13	188	-27	-12.6%
6 to 10	298	-78	-20.7%
0 to 5	254	-72	-22.1%

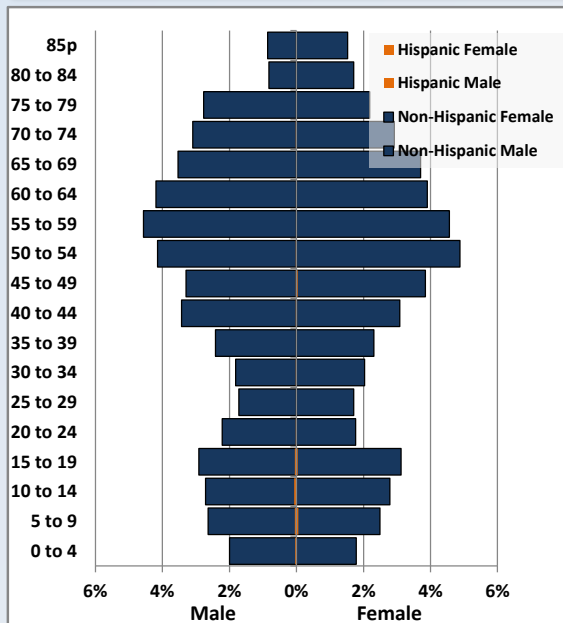
Population Total, 2000 and 2010



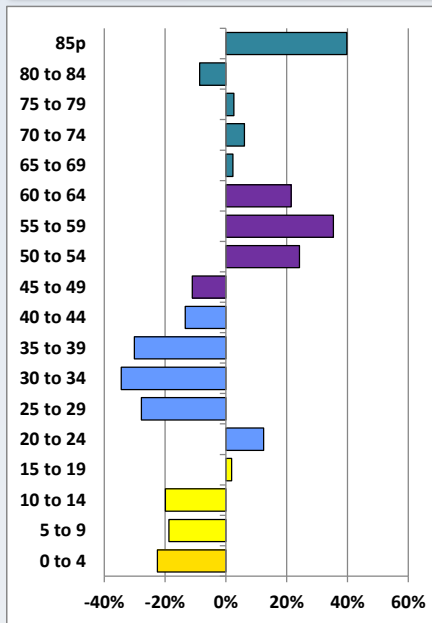
Demographic Profile

Linesville Community Public Library

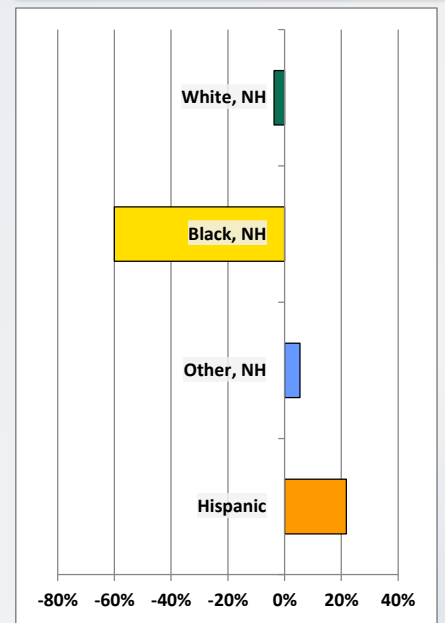
Population by 5-Year Age Cohorts



Pop Change by Age, 2000 to 2010

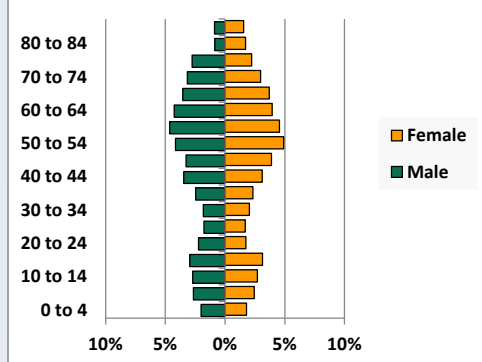


Pop Change by Race/Ethnicity, 2000 to 2010

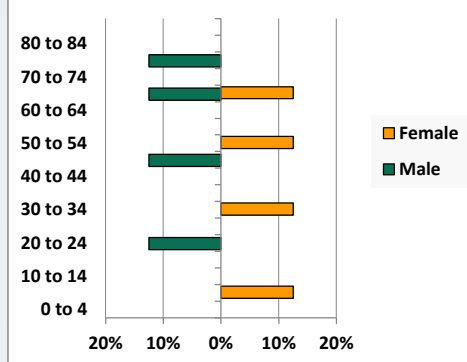


Population by Age, Race and Ethnicity 2010

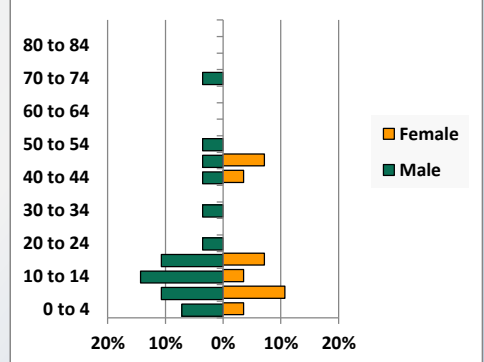
White, Not Hispanic



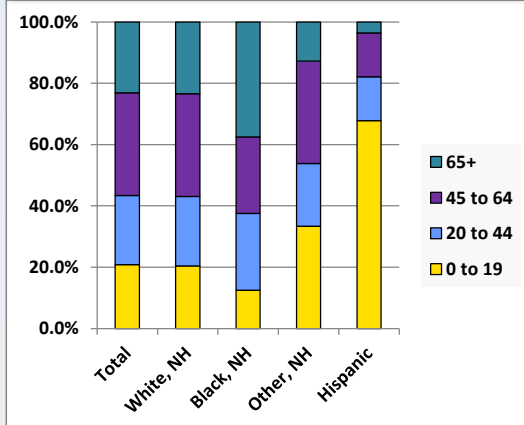
Black, Non-Hispanic



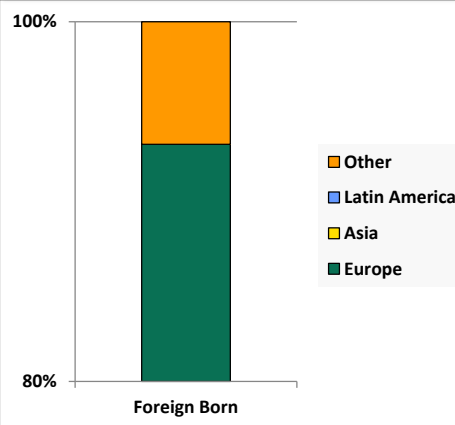
Hispanic



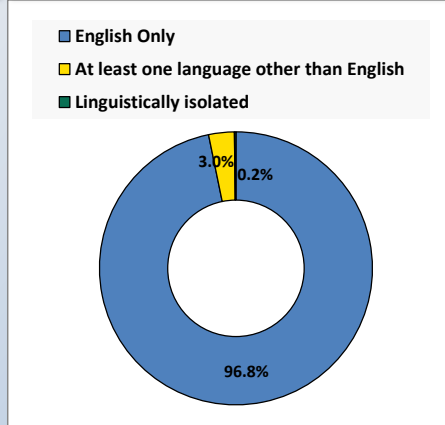
Age by Race and Ethnicity, 2010



Foreign Born, 2010



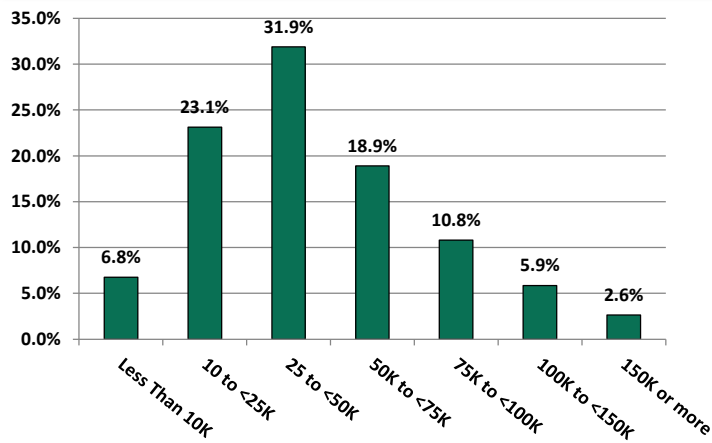
Household Language, 2010



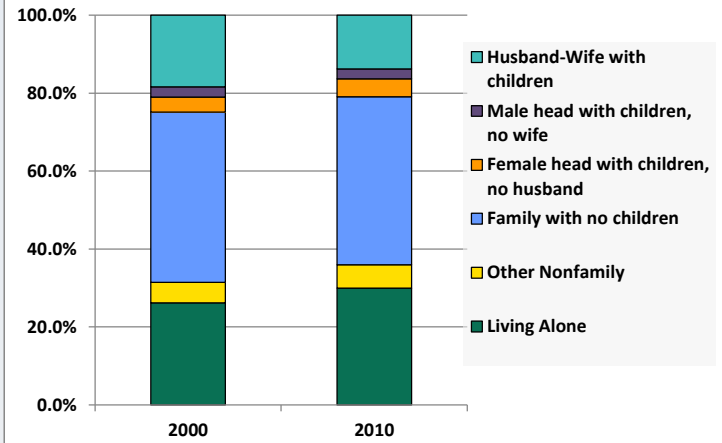
Demographic Profile

Linesville Community Public Library

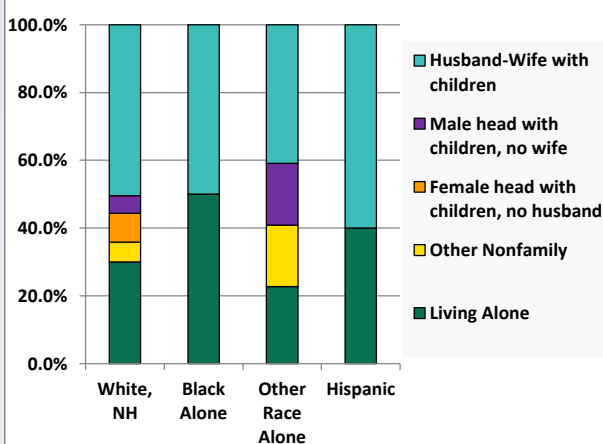
Household Income Distribution, 2008-2012



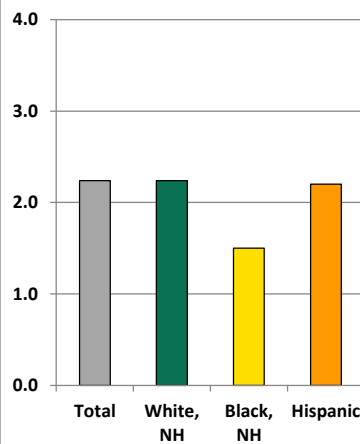
Household Type, 2000 and 2010



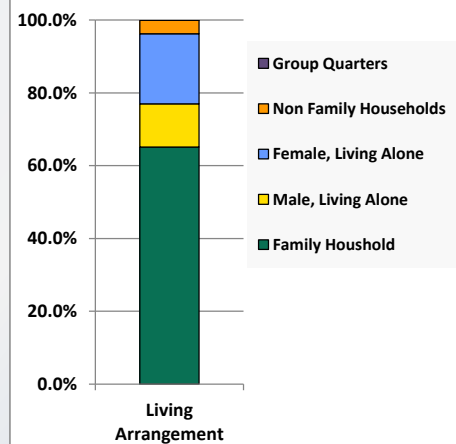
Household Type by Race/Ethnicity, 2010



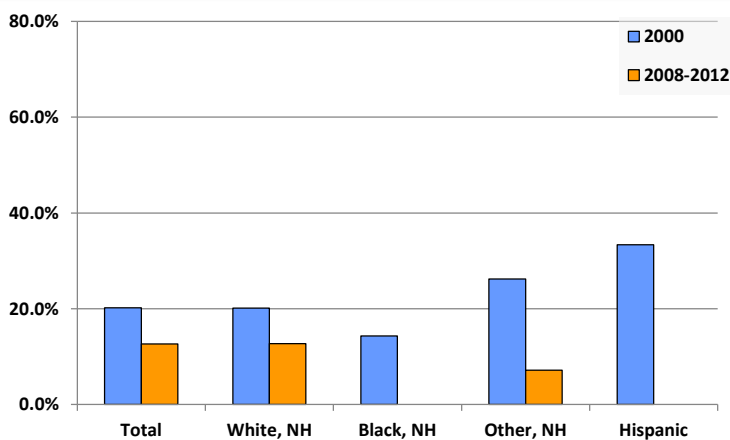
Average Household Size, 2010



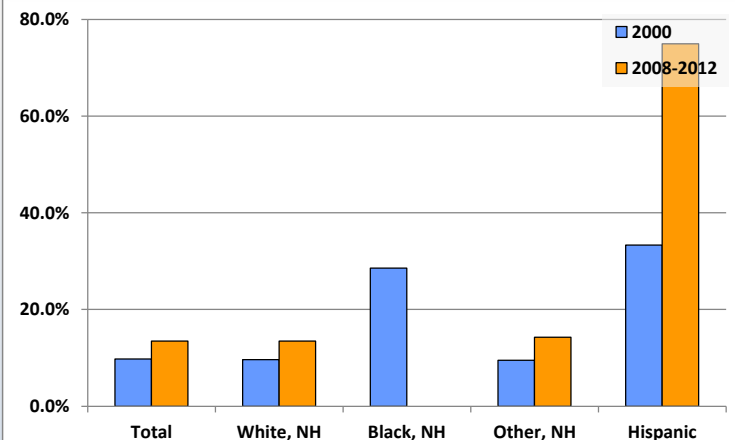
Living Arrangements 65+, 2008-2012



Percent of Adults that Did Not Complete High School



Percent of Adults Who Attained a Bachelor's Degree or Higher



Reference Data

Linesville Community Public Library

	Total Population	White, Non- Hispanic	Black, Non- Hispanic	Other, Non- Hispanic	Detail for Other, Non-Hispanic					Hispanic or Latino
					AIAN	Asian	NHOPI	Some Other Race	Two or More Races	
A. Total Population										
2000 Total	5,661	5,544	20	74	23	10	1	0	40	23
2000 pct of Total	100.0%	97.9%	0.4%	1.3%	0.4%	0.2%	0.0%	0.0%	0.7%	0.4%
2010 Total	5,453	5,339	8	78	20	11	0	0	47	28
2010 pct of Total	100.0%	97.9%	0.1%	1.4%	0.4%	0.2%	0.0%	0.0%	0.9%	0.5%
B. Population by Major Age Groups by Race and Ethnicity										
2000										
0-19	1,331	1,289	4	27	11	0	0	0	16	11
20-64	3,127	3,067	12	38	11	7	1	0	19	10
65+	1,203	1,188	4	9	1	3	0	0	5	2
85+	93	93	0	0	0	0	0	0	0	0
2010										
0-19	1,134	1,088	1	26	4	0	0	0	22	19
20-64	3,057	3,003	4	42	14	7	0	0	21	8
65+	1,262	1,248	3	10	2	4	0	0	4	1
85+	130	130	0	0	0	0	0	0	0	0
C. Age Mix for Each Racial and Ethnic Group										
2000										
0-19	23.5%	23.3%	20.0%	36.5%	47.8%	0.0%	0.0%	0.0%	40.0%	47.8%
20-64	55.2%	55.3%	60.0%	51.4%	47.8%	70.0%	100.0%	0.0%	47.5%	43.5%
65+	21.3%	21.4%	20.0%	12.2%	4.3%	30.0%	0.0%	0.0%	12.5%	8.7%
85+	1.6%	1.7%	0.0%	0.0%	0.0%	0.0%	0.0%	0.0%	0.0%	0.0%
2010										
0-19	20.8%	20.4%	12.5%	33.3%	20.0%	0.0%	0.0%	0.0%	46.8%	67.9%
20-64	56.1%	56.2%	50.0%	53.8%	70.0%	63.6%	0.0%	0.0%	44.7%	28.6%
65+	23.1%	23.4%	37.5%	12.8%	10.0%	36.4%	0.0%	0.0%	8.5%	3.6%
85+	2.4%	2.4%	0.0%	0.0%	0.0%	0.0%	0.0%	0.0%	0.0%	0.0%
D. Racial and Ethnic Composition of Each Age Group										
2000										
0-19	100.0%	96.8%	0.3%	2.0%	0.8%	0.0%	0.0%	0.0%	1.2%	0.8%
20-64	100.0%	98.1%	0.4%	1.2%	0.4%	0.2%	0.0%	0.0%	0.6%	0.3%
65+	100.0%	98.8%	0.3%	0.7%	0.1%	0.2%	0.0%	0.0%	0.4%	0.2%
85+	100.0%	100.0%	0.0%	0.0%	0.0%	0.0%	0.0%	0.0%	0.0%	0.0%
2010										
0-19	100.0%	95.9%	0.1%	2.3%	0.4%	0.0%	0.0%	0.0%	1.9%	1.7%
20-64	100.0%	98.2%	0.1%	1.4%	0.5%	0.2%	0.0%	0.0%	0.7%	0.3%
65+	100.0%	98.9%	0.2%	0.8%	0.2%	0.3%	0.0%	0.0%	0.3%	0.1%
85+	100.0%	100.0%	0.0%	0.0%	0.0%	0.0%	0.0%	0.0%	0.0%	0.0%
E. Population Growth										
2000-2010, Change										
0-19	-197	-201	-3	-1	-7	0	0	0	6	8
20-64	-70	-64	-8	4	3	0	-1	0	2	-2
65+	59	60	-1	1	1	1	0	0	-1	-1
85+	37	37	0	0	0	0	0	0	0	0
Total	-208	-205	-12	4	-3	1	-1	0	7	5
2000-2010, Pct Change										
0-19	-14.8%	-15.6%	-75.0%	-3.7%	-63.6%	0.0%	0.0%	0.0%	37.5%	72.7%
20-64	-2.2%	-2.1%	-66.7%	10.5%	27.3%	0.0%	-100.0%	0.0%	10.5%	-20.0%
65+	4.9%	5.1%	-25.0%	11.1%	100.0%	33.3%	0.0%	0.0%	-20.0%	-50.0%
85+	39.8%	39.8%	0.0%	0.0%	0.0%	0.0%	0.0%	0.0%	0.0%	0.0%
Total	-3.7%	-3.7%	-60.0%	5.4%	-13.0%	10.0%	-100.0%	0.0%	17.5%	21.7%

Source: Decennial Census 2010, 2000, American Community Survey 2008-2012

Prepared for the Pennsylvania State Library by The Pennsylvania State Data Center, 9/2014

Reference Data

Linesville Community Public Library

	Total Population	White, Non- Hispanic	Black, Non- Hispanic	Other, Non- Hispanic	Detail for Other, Non-Hispanic					Hispanic or Latino	
					AIAN	Asian	NHOPI	Some Other	Two or More		
								Race	Races		
F. Population by Library-Defined Age Groups, 2010											
0-5	254	247	0	4	0	0	0	0	4	3	
6-10	298	281	1	8	3	0	0	0	5	8	
11-13	188	179	0	6	0	0	0	0	6	3	
14-18	350	337	0	8	1	0	0	0	7	5	
19-32	573	561	2	9	0	1	0	0	8	1	
33-45	778	765	1	9	3	1	0	0	5	3	
46-64	1,750	1,721	1	24	11	5	0	0	8	4	
65-84	1,132	1,118	3	10	2	4	0	0	4	1	
85+	130	130	0	0	0	0	0	0	0	0	
Total	5,453	5,339	8	78	20	11	0	0	47	28	
G. Population by 5-Year Age Cohorts, 2010											
0-4	209	203	0	3	0	0	0	0	3	3	
5-9	286	271	1	8	2	0	0	0	6	6	
10-14	305	290	0	10	2	0	0	0	8	5	
15-19	334	324	0	5	0	0	0	0	5	5	
20-24	218	212	1	4	0	0	0	0	4	1	
25-29	187	184	0	3	0	1	0	0	2	0	
30-34	211	206	1	3	0	0	0	0	3	1	
35-39	258	256	0	2	1	0	0	0	1	0	
40-44	357	351	0	4	1	1	0	0	2	2	
45-49	393	383	1	6	2	2	0	0	2	3	
50-54	493	483	1	8	5	1	0	0	2	1	
55-59	498	491	0	7	3	2	0	0	2	0	
60-64	442	437	0	5	2	0	0	0	3	0	
65-69	395	387	2	6	1	2	0	0	3	0	
70-74	329	328	0	0	0	0	0	0	0	1	
75-79	270	266	1	3	1	2	0	0	0	0	
80-84	138	137	0	1	0	0	0	0	1	0	
85-89	99	99	0	0	0	0	0	0	0	0	
90-94	25	25	0	0	0	0	0	0	0	0	
95-99	5	5	0	0	0	0	0	0	0	0	
100+	1	1	0	0	0	0	0	0	0	0	
Total	5,453	5,339	8	78	20	11	0	0	47	28	

Source: Decennial Census 2010, 2000, American Community Survey 2008-2012

Prepared for the Pennsylvania State Library by The Pennsylvania State Data Center, 9/2014

Page 6

Reference Data

Linesville Community Public Library

H. Income Distribution, 2008-2012

Range (in thousands)	Households	Pct of Total
<\$10K	151	6.8%
\$10K to <\$25K	517	23.1%
\$25K to <\$50K	713	31.9%
\$50K to <\$75K	423	18.9%
\$75K to <\$100K	242	10.8%
\$100K to <\$150K	131	5.9%
\$150K+	59	2.6%

I. Household Type, 2010

Household Type	2000	2000pct	2010	2010pct
Total Households	2,388	100.0%	2,434	100.0%
Family Households	1,637	68.6%	1,559	64.1%
Husband-wife, no children w/children	439	18.4%	336	13.8%
Female head, no husband, w/ children	91	3.8%	111	4.6%
Male head, no wife, w/ children	63	2.6%	62	2.5%
Without children	1,044	43.7%	1,050	43.1%
Nonfamily households	751	31.4%	875	35.9%
Living alone	625	26.2%	730	30.0%
Other nonfamily	126	5.3%	145	6.0%

J. Household Type by Race and Ethnicity, 2008-2012

Household Type	White, NH	Black, NH	Other, NH	Hispanic
Total Households	2,405	2	22	5
Husband wife family	50.5%	50.0%	40.9%	60.0%
Family with male head, no wife	5.1%	0.0%	18.2%	0.0%
family with female head, no husband	8.5%	0.0%	0.0%	0.0%
Living alone	30.0%	50.0%	22.7%	40.0%
Other nonfamily	5.9%	0.0%	18.2%	0.0%

K. Poverty, 2008-2012

Families	Poverty	PA
All families	11.0%	9.1%
Families w/ related children	27.0%	15.3%
Female householder, no husband present	38.7%	28.8%
Female householder, no husband present, w/ related children	50.6%	39.2%
All people	16.7%	13.1%
Under 18 years	31.3%	18.4%
18 to 64 years	15.3%	12.3%
65 years and over	8.1%	8.4%

L. Educational Attainment by Race and Ethnicity, 2008-2012

Education Level	White, NH	Black	Other	Hispanic	Total
Population 25 years and over	3,754	5	14	4	3,776
Less than high school	12.7%	0.0%	7%	0.0%	12.7%
High school graduate (includes equivalency	49.1%	100.0%	71%	25.0%	49.2%
Some college or associates degree	24.8%	0.0%	7%	0.0%	24.7%
Bachelors degree or higher	13.5%	0.0%	14%	75.0%	13.5%

M. Occupation, 2008-2012

Occupation	Estimate	Percent
Civilian population age 16 years and over	2,062	100.0%
Management, professional, and related occupations	522	25.3%
Service occupations	405	19.6%
Sales and office occupations	514	24.9%
Farming, fishing, and forestry occupations	5	0.2%
Construction, extraction, maintenance, and repair occupations	254	12.3%
Production, transportation, and material moving occupations	362	17.6%

N. Class of Worker, 2008-2012

Occupation	Estimate	Percent
Civilian population age 16 years and over	2,062	100.0%
Private, for profit, wage and salary employee	1,393	67.6%
Private, not for profit, wage and salary employee	197	9.6%
Private, for profit, wage and salary self-employed in own business	59	2.9%
Government workers	232	11.3%
Self-employed in own not incorporated business	181	8.8%
Unpaid family workers in family business	0	0.0%