

## **Demographic Profile Mansfield Free Public Library**

**Population Growth:** The total population of the Mansfield Free Public Library service area increased by 2.3 percent over the past decade to 6,021; this growth rate was lower than the statewide rate of 3.4 percent.

**Age and Sex:** In 2010, the Mansfield Free Public Library service area had a total population of 6,021 - 2,797 males (46.5 percent) and 3,224 females (53.5 percent). The age structure of the population in 2010 was as follows: 28.2 percent of the population was under 20 years old, 59.6 percent was 20 to 64 years old and 12.3 percent was 65 years or older.

**Race and Ethnicity:** For people reporting one race alone, not of Hispanic ethnicity, 91.5 percent were White; 3.4 percent were Black or African American; 2.9 percent were Other Race Alone.<sup>1</sup> A total of 133 or 2.2 percent of the population were Hispanic.<sup>2</sup>

**Households:** In 2010, there were 1,987 households in the Mansfield Free Public Library service area. The average household size was 2.26 people. Families made up 57.2 percent of the households. This figure includes both families with (21.4 percent) and without (35.7 percent) children. Of families with children less than 18 years old, 14.0 percent were married-couple families, 5.7 percent were female householder families with no husband present, and the remaining (1.7 percent) were male-headed households with no wife present.

**Education:** The educational attainment of the population 25 years and over was higher in the Mansfield Free Public Library service area than in Pennsylvania. During the period 2008-2012, 30.6 percent of residents had earned a Bachelor's degree or higher, compared with 27.0 percent statewide. A total of 290 or 9.8 percent had not completed high school, compared with 11.7 percent for the commonwealth as a whole.

**Income and Poverty:** Households with incomes of less than \$25,000 (36.2 percent) made up the largest percent of households in the Mansfield Free Public Library service area in 2008-2012. For comparison, 23.6 percent of commonwealth households were in this range during the period.

In 2008-2012, the overall poverty rate for the Mansfield Free Public Library service area was higher than Pennsylvania (25.0 percent compared to 13.1 percent). The poverty rate for the population under 18 years of age was 24.2 percent, compared with 29.1 percent of people 18 to 64 years and 9.3 percent for those aged 65 years and over. A total of 185 or 15.6 percent of all families had incomes below poverty level. In 2008-2012, 24.3 percent of families with related children and 59.5 percent of families with a female householder and no husband with related children present had incomes below the poverty level.

**Class of Worker and Occupation:** In 2008-2012, 70.4 percent of the workforce was private wage and salary workers; 20.0 percent were federal, state, or local government workers; and 9.4 percent were self-employed in their own (not incorporated) business.

The top occupation group for the civilian employed population 16 years and over in the Mansfield Free Public Library service area in 2008-2012 was Management, business, science, and arts (31.8 percent).

---

<sup>1</sup> Other race includes those who identified themselves as American Indian/Alaska Native, Asian, Native Hawaiian/Other Pacific Islander, Some Other Race and Two or More Races on the 2010 Census form.

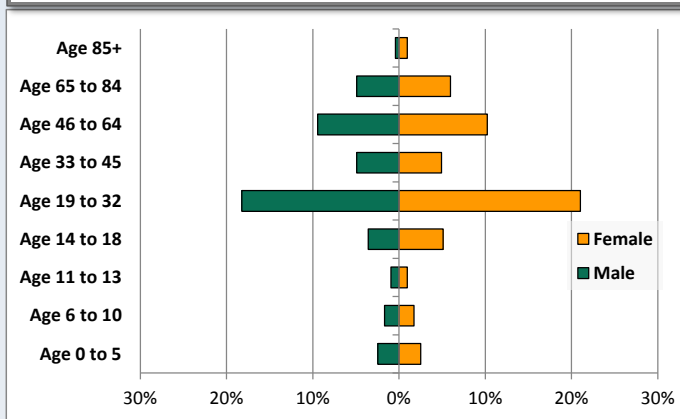
<sup>2</sup> People of Hispanic origin may be of any race.

# Demographic Profile

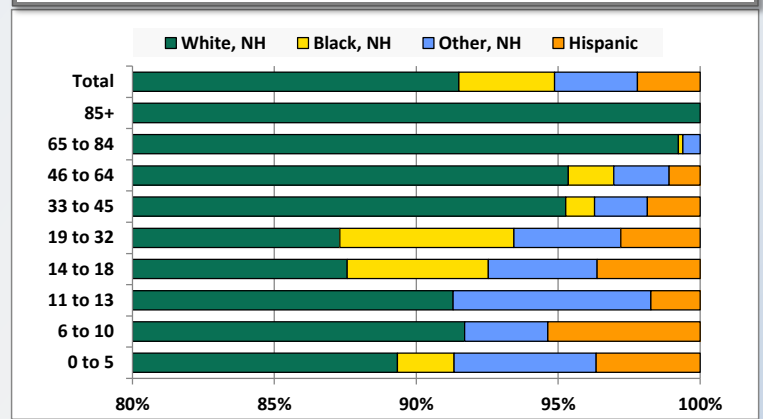
Mansfield Free Public Library

Key Indicators		
	2000	2010
<b>Population Growth</b>		
Total Population	5,886	6,021
10-Year Growth	N/A	2.3%
<b>Diversity</b>		
White Alone, Non-Hispanic	94.6%	91.5%
Black Alone, Non-Hispanic	2.6%	3.4%
Other Race Alone, Non-Hispanic	1.9%	2.9%
Percent Hispanic	0.9%	2.2%
<b>Aging</b>		
Percent 65 Years and Over	10.6%	12.3%
<b>Households</b>		
Percent Married Couple with Own Children	20.5%	14.0%
Percent Living Alone	28.3%	29.9%

Population by Library-Defined Age Group, 2010



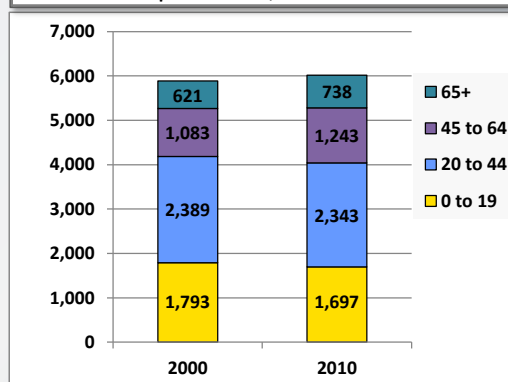
Race/Ethnicity by Library-Defined Age Group, 2010



Population Growth by Library-Defined Age Group, 2000 to 2010

Age Group	2010	Change	
		Numeric	Percent
Total	6,021	135	2.3%
85+	84	21	33.3%
65 to 84	654	96	17.2%
46 to 64	1,184	185	18.5%
33 to 45	592	-211	-26.3%
19 to 32	2,364	268	12.8%
14 to 18	523	-59	-10.1%
11 to 13	115	-64	-35.8%
6 to 10	205	-90	-30.5%
0 to 5	300	-11	-3.5%

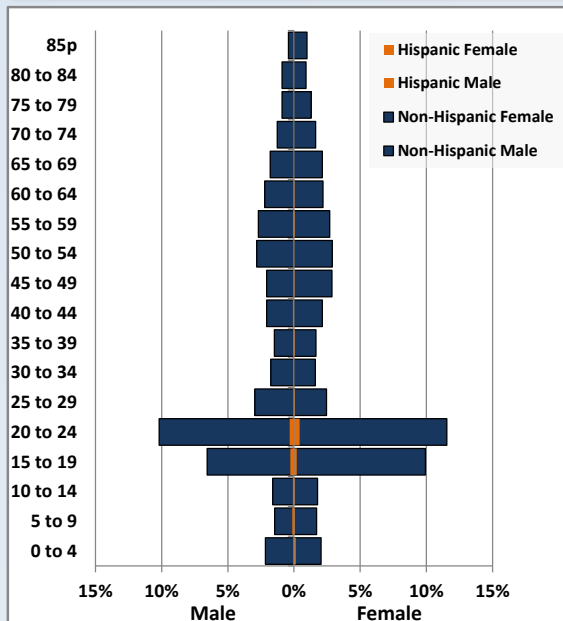
Population Total, 2000 and 2010



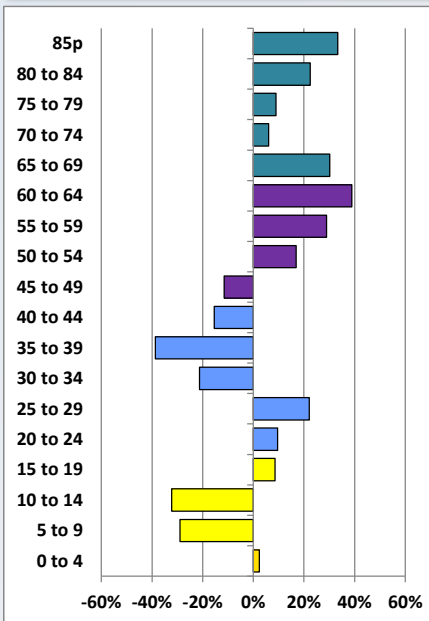
# Demographic Profile

Mansfield Free Public Library

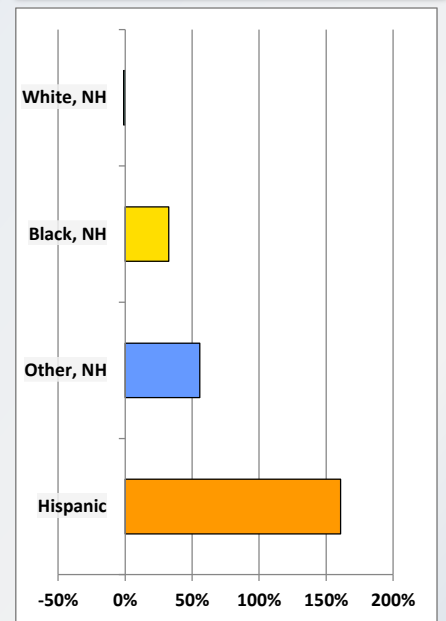
Population by 5-Year Age Cohorts



Pop Change by Age, 2000 to 2010

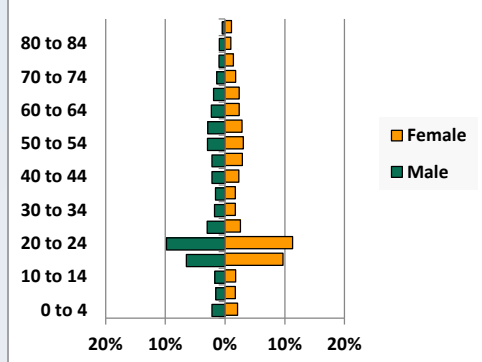


Pop Change by Race/Ethnicity, 2000 to 2010

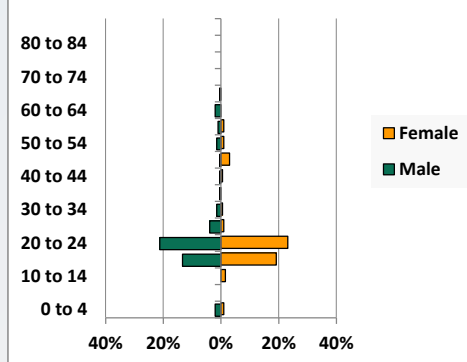


Population by Age, Race and Ethnicity 2010

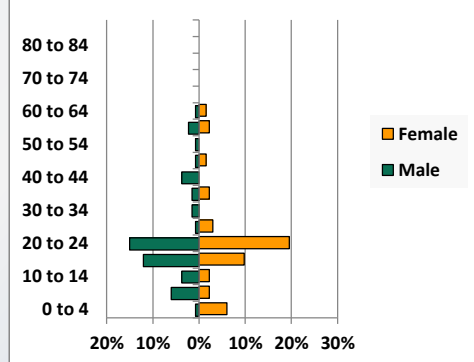
White, Not Hispanic



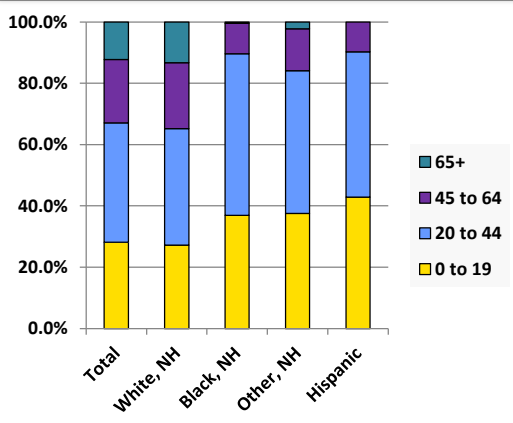
Black, Non-Hispanic



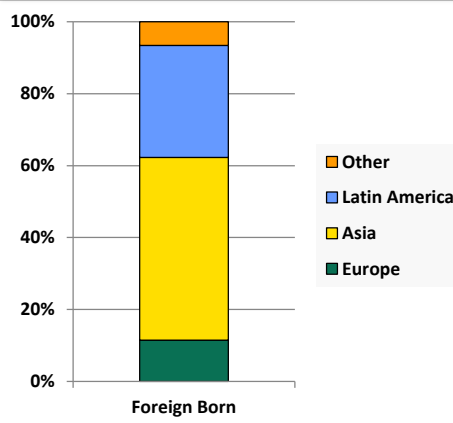
Hispanic



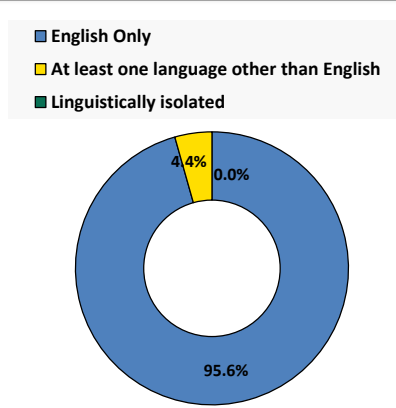
Age by Race and Ethnicity, 2010



Foreign Born, 2010



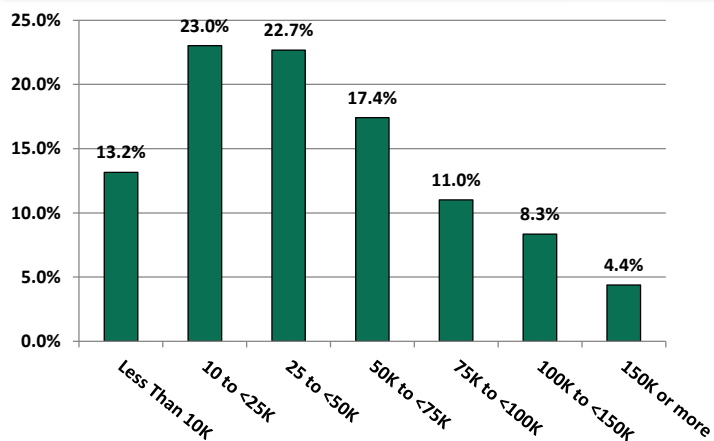
Household Language, 2010



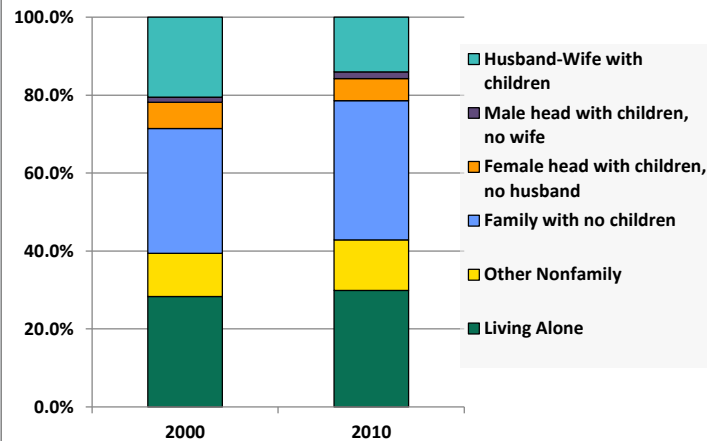
# Demographic Profile

Mansfield Free Public Library

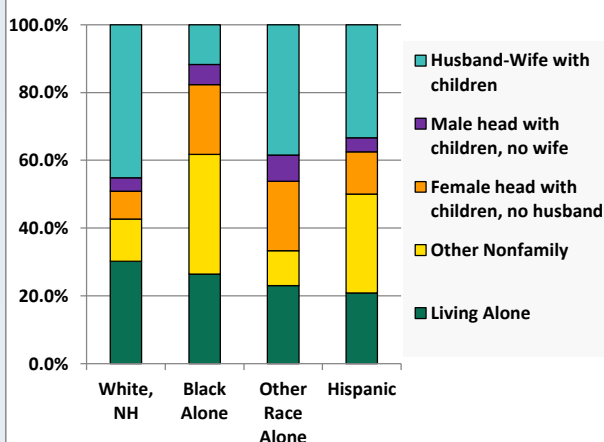
Household Income Distribution, 2008-2012



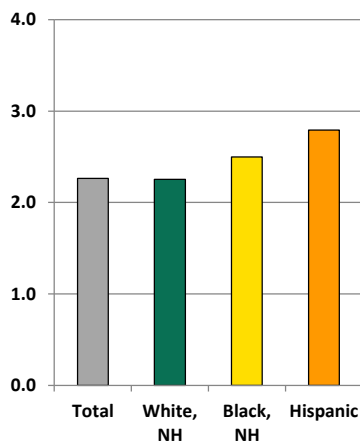
Household Type, 2000 and 2010



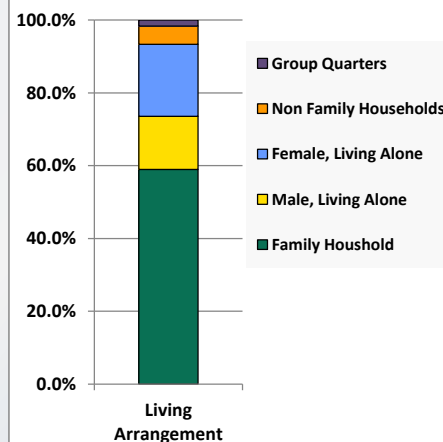
Household Type by Race/Ethnicity, 2010



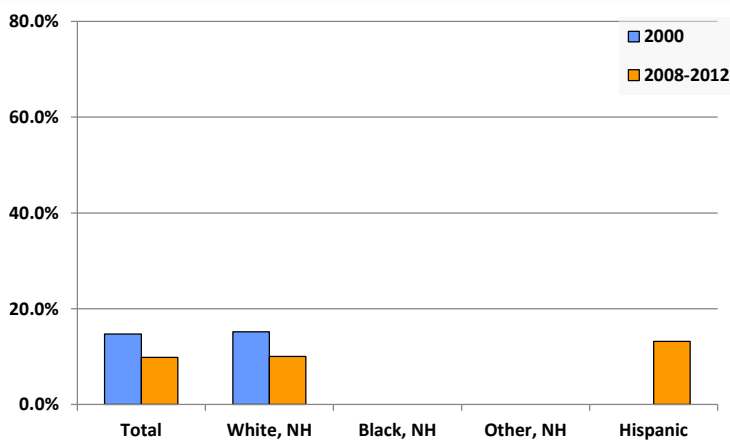
Average Household Size, 2010



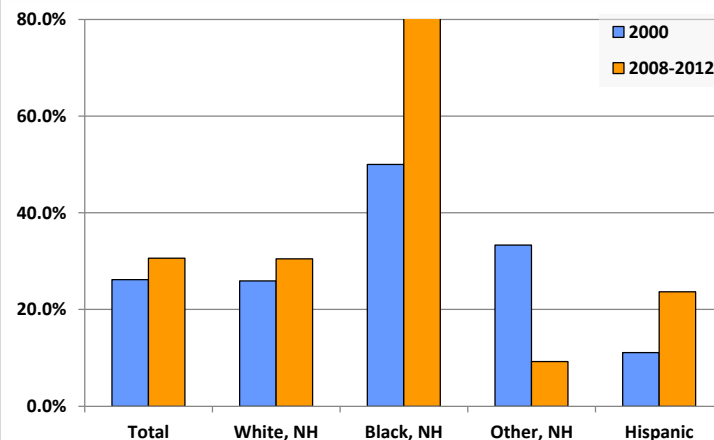
Living Arrangements 65+, 2008-2012



Percent of Adults that Did Not Complete High School



Percent of Adults Who Attained a Bachelor's Degree or Higher



# Reference Data

## Mansfield Free Public Library

	Total Population	White, Non- Hispanic	Black, Non- Hispanic	Other, Non- Hispanic	Detail for Other, Non-Hispanic					Hispanic or Latino
					AIAN	Asian	NHOPI	Some Other Race	Two or More Races	
A. Total Population										
2000 Total	5,886	5,569	153	113	17	39	0	8	49	51
2000 pct of Total	100.0%	94.6%	2.6%	1.9%	0.3%	0.7%	0.0%	0.1%	0.8%	0.9%
2010 Total	6,021	5,509	203	176	13	64	2	8	89	133
2010 pct of Total	100.0%	91.5%	3.4%	2.9%	0.2%	1.1%	0.0%	0.1%	1.5%	2.2%
B. Population by Major Age Groups by Race and Ethnicity										
2000										
0-19	1,793	1,677	54	39	5	10	0	4	20	23
20-64	3,472	3,275	98	73	11	29	0	4	29	26
65+	621	617	1	1	1	0	0	0	0	2
85+	63	63	0	0	0	0	0	0	0	0
2010										
0-19	1,697	1,499	75	66	4	13	0	3	46	57
20-64	3,586	3,277	127	106	9	49	2	5	41	76
65+	738	733	1	4	0	2	0	0	2	0
85+	84	84	0	0	0	0	0	0	0	0
C. Age Mix for Each Racial and Ethnic Group										
2000										
0-19	30.5%	30.1%	35.3%	34.5%	29.4%	25.6%	0.0%	50.0%	40.8%	45.1%
20-64	59.0%	58.8%	64.1%	64.6%	64.7%	74.4%	0.0%	50.0%	59.2%	51.0%
65+	10.6%	11.1%	0.7%	0.9%	5.9%	0.0%	0.0%	0.0%	0.0%	3.9%
85+	1.1%	1.1%	0.0%	0.0%	0.0%	0.0%	0.0%	0.0%	0.0%	0.0%
2010										
0-19	28.2%	27.2%	36.9%	37.5%	30.8%	20.3%	0.0%	37.5%	51.7%	42.9%
20-64	59.6%	59.5%	62.6%	60.2%	69.2%	76.6%	100.0%	62.5%	46.1%	57.1%
65+	12.3%	13.3%	0.5%	2.3%	0.0%	3.1%	0.0%	0.0%	2.2%	0.0%
85+	1.4%	1.5%	0.0%	0.0%	0.0%	0.0%	0.0%	0.0%	0.0%	0.0%
D. Racial and Ethnic Composition of Each Age Group										
2000										
0-19	100.0%	93.5%	3.0%	2.2%	0.3%	0.6%	0.0%	0.2%	1.1%	1.3%
20-64	100.0%	94.3%	2.8%	2.1%	0.3%	0.8%	0.0%	0.1%	0.8%	0.7%
65+	100.0%	99.4%	0.2%	0.2%	0.2%	0.0%	0.0%	0.0%	0.0%	0.3%
85+	100.0%	100.0%	0.0%	0.0%	0.0%	0.0%	0.0%	0.0%	0.0%	0.0%
2010										
0-19	100.0%	88.3%	4.4%	3.9%	0.2%	0.8%	0.0%	0.2%	2.7%	3.4%
20-64	100.0%	91.4%	3.5%	3.0%	0.3%	1.4%	0.1%	0.1%	1.1%	2.1%
65+	100.0%	99.3%	0.1%	0.5%	0.0%	0.3%	0.0%	0.0%	0.3%	0.0%
85+	100.0%	100.0%	0.0%	0.0%	0.0%	0.0%	0.0%	0.0%	0.0%	0.0%
E. Population Growth										
2000-2010, Change										
0-19	-96	-178	21	27	-1	3	0	-1	26	34
20-64	114	2	29	33	-2	20	2	1	12	50
65+	117	116	0	3	-1	2	0	0	2	-2
85+	21	21	0	0	0	0	0	0	0	0
Total	135	-60	50	63	-4	25	2	0	40	82
2000-2010, Pct Change										
0-19	-5.4%	-10.6%	38.9%	69.2%	-20.0%	30.0%	0.0%	-25.0%	130.0%	147.8%
20-64	3.3%	0.1%	29.6%	45.2%	-18.2%	69.0%	0.0%	25.0%	41.4%	192.3%
65+	18.8%	18.8%	0.0%	300.0%	-100.0%	0.0%	0.0%	0.0%	0.0%	-100.0%
85+	33.3%	33.3%	0.0%	0.0%	0.0%	0.0%	0.0%	0.0%	0.0%	0.0%
Total	2.3%	-1.1%	32.7%	55.8%	-23.5%	64.1%	0.0%	0.0%	81.6%	160.8%

Source: Decennial Census 2010, 2000, American Community Survey 2008-2012

Prepared for the Pennsylvania State Library by The Pennsylvania State Data Center, 9/2014

# Reference Data

## Mansfield Free Public Library

	Total Population	White, Non- Hispanic	Black, Non- Hispanic	Other, Non- Hispanic	Detail for Other, Non-Hispanic					Hispanic or Latino
					AIAN	Asian	NHOPI	Some Other	Two or More	
								Race	Races	
F. Population by Library-Defined Age Groups, 2010										
0-5	300	268	6	15	0	2	0	0	13	11
6-10	205	188	0	6	0	1	0	1	4	11
11-13	115	105	0	8	1	1	0	1	5	2
14-18	523	458	26	20	2	4	0	1	13	19
19-32	2,364	2,064	145	89	5	37	2	5	40	66
33-45	592	564	6	11	3	6	0	0	2	11
46-64	1,184	1,129	19	23	2	11	0	0	10	13
65-84	654	649	1	4	0	2	0	0	2	0
85+	84	84	0	0	0	0	0	0	0	0
Total	6,021	5,509	203	176	13	64	2	8	89	133
G. Population by 5-Year Age Cohorts, 2010										
0-4	262	235	6	12	0	0	0	0	12	9
5-9	201	181	0	9	0	3	0	1	5	11
10-14	212	192	3	9	1	1	0	1	6	8
15-19	1,022	891	66	36	3	9	0	1	23	29
20-24	1,355	1,161	90	58	2	30	1	4	21	46
25-29	331	307	10	9	1	1	1	0	6	5
30-34	204	193	4	5	1	1	0	1	2	2
35-39	195	183	1	6	2	3	0	0	1	5
40-44	258	247	2	4	1	2	0	0	1	5
45-49	300	282	7	8	0	4	0	0	4	3
50-54	345	331	5	8	1	5	0	0	2	1
55-59	330	316	4	4	0	3	0	0	1	6
60-64	268	257	4	4	1	0	0	0	3	3
65-69	237	235	1	1	0	0	0	0	1	0
70-74	175	175	0	0	0	0	0	0	0	0
75-79	133	132	0	1	0	0	0	0	1	0
80-84	109	107	0	2	0	2	0	0	0	0
85-89	61	61	0	0	0	0	0	0	0	0
90-94	14	14	0	0	0	0	0	0	0	0
95-99	9	9	0	0	0	0	0	0	0	0
100+	0	0	0	0	0	0	0	0	0	0
Total	6,021	5,509	203	176	13	64	2	8	89	133

Source: Decennial Census 2010, 2000, American Community Survey 2008-2012

Prepared for the Pennsylvania State Library by The Pennsylvania State Data Center, 9/2014

Page 6

# Reference Data

## Mansfield Free Public Library

### H. Income Distribution, 2008-2012

Range (in thousands)	Households	Pct of Total
<\$10K	270	13.2%
\$10K to <\$25K	472	23.0%
\$25K to <\$50K	465	22.7%
\$50K to <\$75K	357	17.4%
\$75K to <\$100K	226	11.0%
\$100K to <\$150K	171	8.3%
\$150K+	90	4.4%

### I. Household Type, 2010

Household Type	2000	2000pct	2010	2010pct
Total Households	1,913	100.0%	1,987	100.0%
Family Households	1,159	60.6%	1,136	57.2%
Husband-wife, no children w/children	393	20.5%	279	14.0%
Female head, no husband, w/ children	128	6.7%	113	5.7%
Male head, no wife, w/ children	25	1.3%	34	1.7%
Without children	613	32.0%	710	35.7%
Nonfamily households	754	39.4%	851	42.8%
Living alone	542	28.3%	594	29.9%
Other nonfamily	212	11.1%	257	12.9%

### J. Household Type by Race and Ethnicity, 2008-2012

Household Type	White, NH	Black, NH	Other, NH	Hispanic
Total Households	1,898	34	39	24
Husband wife family	45.2%	11.8%	38.5%	33.3%
Family with male head, no wife	4.0%	5.9%	7.7%	4.2%
family with female head, no husband	8.2%	20.6%	20.5%	12.5%
Living alone	30.2%	26.5%	23.1%	20.8%
Other nonfamily	12.5%	35.3%	10.3%	29.2%

### K. Poverty, 2008-2012

Families	Poverty	PA
All families	15.6%	9.1%
Families w/ related children	24.3%	15.3%
Female householder, no husband present	49.6%	28.8%
Female householder, no husband present, w/ related children	59.5%	39.2%
All people	25.0%	13.1%
Under 18 years	24.2%	18.4%
18 to 64 years	29.1%	12.3%
65 years and over	9.3%	8.4%

### L. Educational Attainment by Race and Ethnicity, 2008-2012

Education Level	White, NH	Black	Other	Hispanic	Total
Population 25 years and over	2,846	22	54	38	2,952
Less than high school	10.0%	0.0%	0%	13.2%	9.8%
High school graduate (includes equivalency	33.0%	0.0%	59%	44.7%	33.2%
Some college or associates degree	26.5%	0.0%	31%	18.4%	26.4%
Bachelors degree or higher	30.5%	100.0%	9%	23.7%	30.6%

### M. Occupation, 2008-2012

Occupation	Estimate	Percent
Civilian population age 16 years and over	2,610	100.0%
Management, professional, and related occupations	831	31.8%
Service occupations	484	18.5%
Sales and office occupations	655	25.1%
Farming, fishing, and forestry occupations	5	0.2%
Construction, extraction, maintenance, and repair occupations	231	8.9%
Production, transportation, and material moving occupations	404	15.5%

### N. Class of Worker, 2008-2012

Occupation	Estimate	Percent
Civilian population age 16 years and over	2,610	100.0%
Private, for profit, wage and salary employee	1,536	58.9%
Private, not for profit, wage and salary employee	230	8.8%
Private, for profit, wage and salary self-employed in own business	72	2.8%
Government workers	521	20.0%
Self-employed in own not incorporated business	245	9.4%
Unpaid family workers in family business	6	0.2%