

Demographic Profile Martinsburg Community Library

Population Growth: The total population of the Martinsburg Community Library service area increased by 2.4 percent over the past decade to 5,110; this growth rate was lower than the statewide rate of 3.4 percent.

Age and Sex: In 2010, the Martinsburg Community Library service area had a total population of 5,110 - 2,414 males (47.2 percent) and 2,696 females (52.8 percent). The age structure of the population in 2010 was as follows: 22.5 percent of the population was under 20 years old, 50.4 percent was 20 to 64 years old and 27.1 percent was 65 years or older.

Race and Ethnicity: For people reporting one race alone, not of Hispanic ethnicity, 97.7 percent were White; .3 percent were Black or African American; .7 percent were Other Race Alone.¹ A total of 66 or 1.3 percent of the population were Hispanic.²

Households: In 2010, there were 2,074 households in the Martinsburg Community Library service area. The average household size was 2.33 people. Families made up 65.1 percent of the households. This figure includes both families with (24.1 percent) and without (41.0 percent) children. Of families with children less than 18 years old, 18.9 percent were married-couple families, 3.3 percent were female householder families with no husband present, and the remaining (1.9 percent) were male-headed households with no wife present.

Education: The educational attainment of the population 25 years and over was lower in the Martinsburg Community Library service area than in Pennsylvania. During the period 2008-2012, 17.1 percent of residents had earned a Bachelor's degree or higher, compared with 27.0 percent statewide. A total of 363 or 10.2 percent had not completed high school, compared with 11.7 percent for the commonwealth as a whole.

Income and Poverty: Households with incomes of \$25,000 to \$49,999 (31.4 percent) made up the largest percent of households in the Martinsburg Community Library service area in 2008-2012. For comparison, 24.4 percent of commonwealth households were in this range during the period.

In 2008-2012, the overall poverty rate for the Martinsburg Community Library service area was lower than Pennsylvania (9.6 percent compared to 13.1 percent). The poverty rate for the population under 18 years of age was 10.2 percent, compared with 7.0 percent of people 18 to 64 years and 15.1 percent for those aged 65 years and over. A total of 77 or 6.2 percent of all families had incomes below poverty level. In 2008-2012, 11.9 percent of families with related children and 46.1 percent of families with a female householder and no husband with related children present had incomes below the poverty level.

Class of Worker and Occupation: In 2008-2012, 81.6 percent of the workforce was private wage and salary workers; 12.3 percent were federal, state, or local government workers; and 6.0 percent were self-employed in their own (not incorporated) business.

The top occupation group for the civilian employed population 16 years and over in the Martinsburg Community Library service area in 2008-2012 was Management, business, science, and arts (30.4 percent).

¹ Other race includes those who identified themselves as American Indian/Alaska Native, Asian, Native Hawaiian/Other Pacific Islander, Some Other Race and Two or More Races on the 2010 Census form.

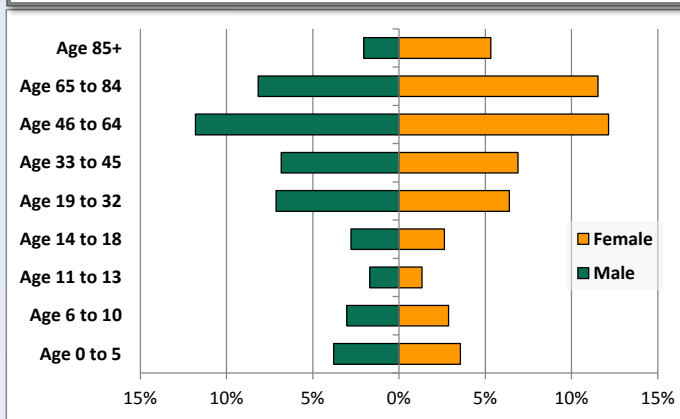
² People of Hispanic origin may be of any race.

Demographic Profile

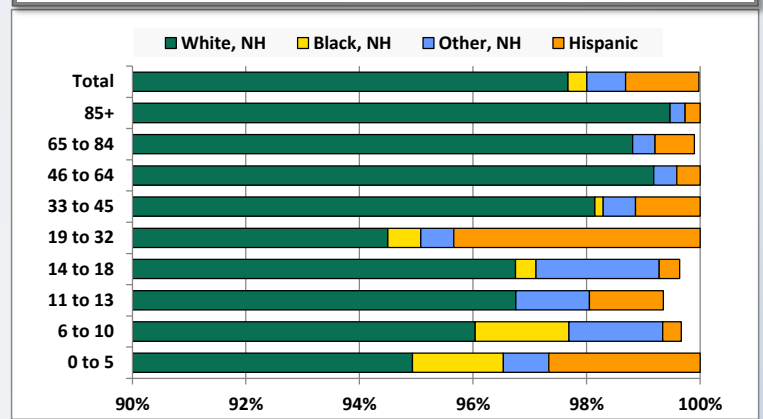
Martinsburg Community Library

Key Indicators		
	2000	2010
Population Growth		
Total Population	4,992	5,110
10-Year Growth	N/A	2.4%
Diversity		
White Alone, Non-Hispanic	99.2%	97.7%
Black Alone, Non-Hispanic	0.1%	0.3%
Other Race Alone, Non-Hispanic	0.4%	0.7%
Percent Hispanic	0.3%	1.3%
Aging		
Percent 65 Years and Over	22.9%	27.1%
Households		
Percent Married Couple with Own Children	23.9%	18.9%
Percent Living Alone	29.3%	31.4%

Population by Library-Defined Age Group, 2010



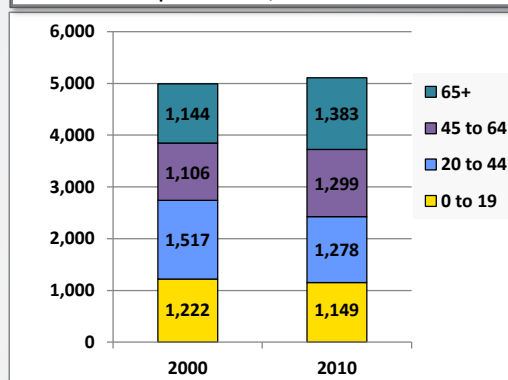
Race/Ethnicity by Library-Defined Age Group, 2010



Population Growth by Library-Defined Age Group, 2000 to 2010

Age Group	2010	Change	
		Numeric	Percent
Total	5,110	118	2.4%
85+	376	84	28.8%
65 to 84	1,008	155	18.2%
46 to 64	1,224	180	17.2%
33 to 45	702	-160	-18.6%
19 to 32	691	-62	-8.2%
14 to 18	277	-81	-22.6%
11 to 13	154	-57	-27.0%
6 to 10	303	2	0.7%
0 to 5	375	57	17.9%

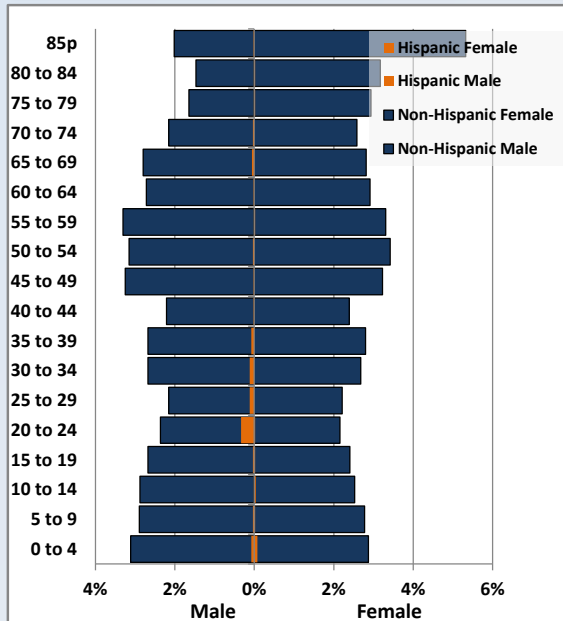
Population Total, 2000 and 2010



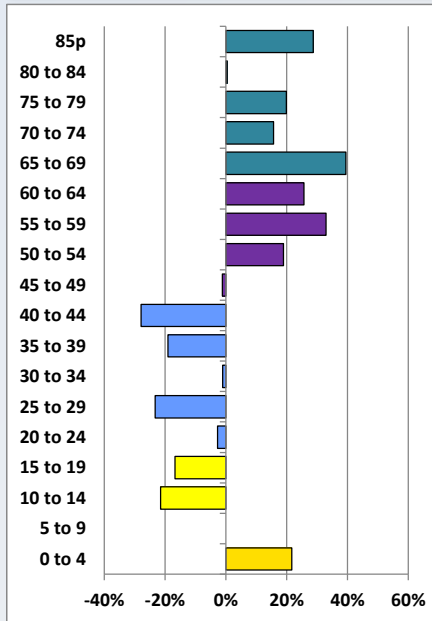
Demographic Profile

Martinsburg Community Library

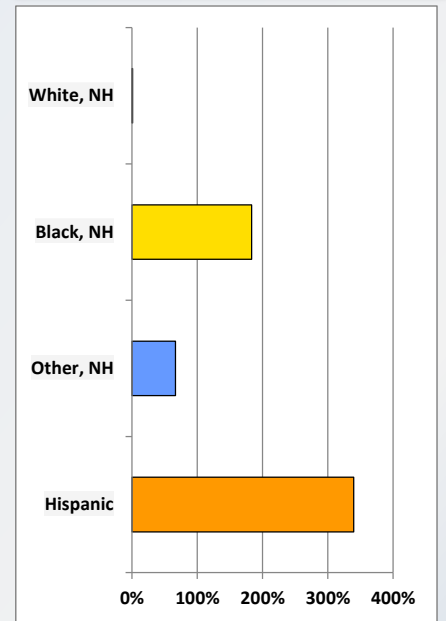
Population by 5-Year Age Cohorts



Pop Change by Age, 2000 to 2010

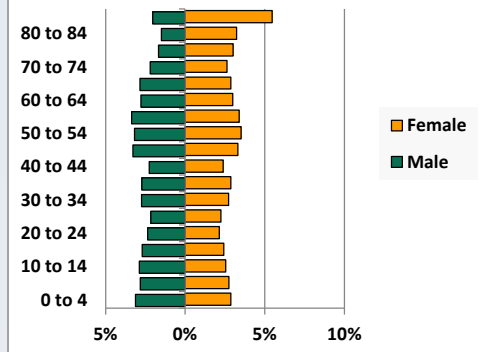


Pop Change by Race/Ethnicity, 2000 to 2010

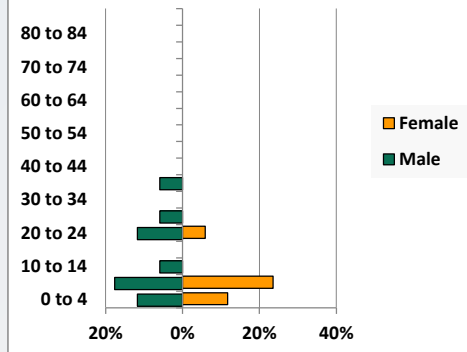


Population by Age, Race and Ethnicity 2010

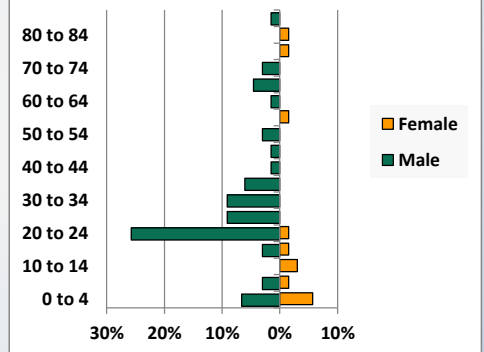
White, Not Hispanic



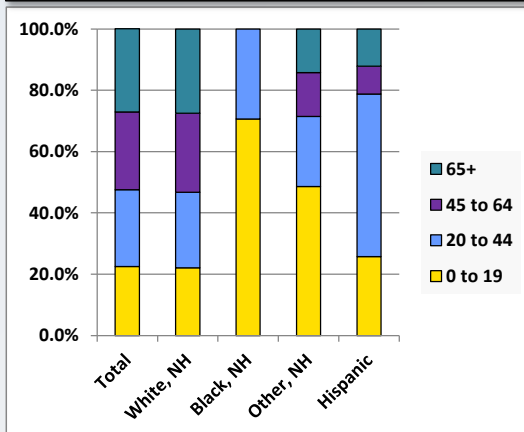
Black, Non-Hispanic



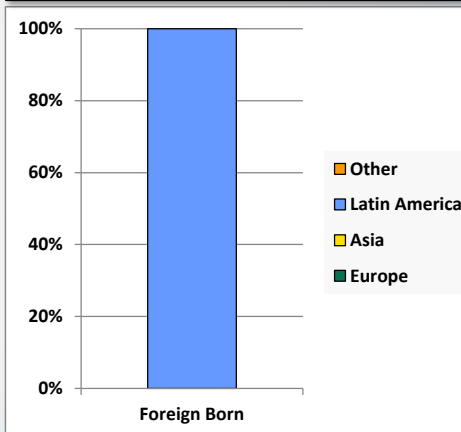
Hispanic



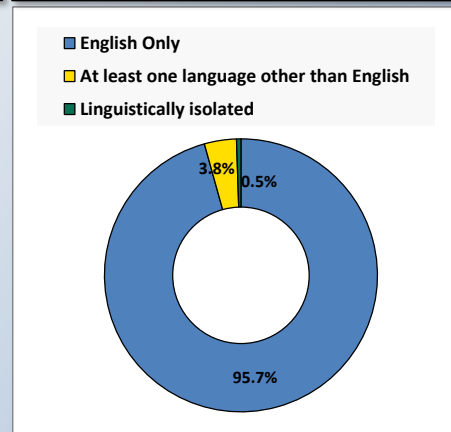
Age by Race and Ethnicity, 2010



Foreign Born, 2010



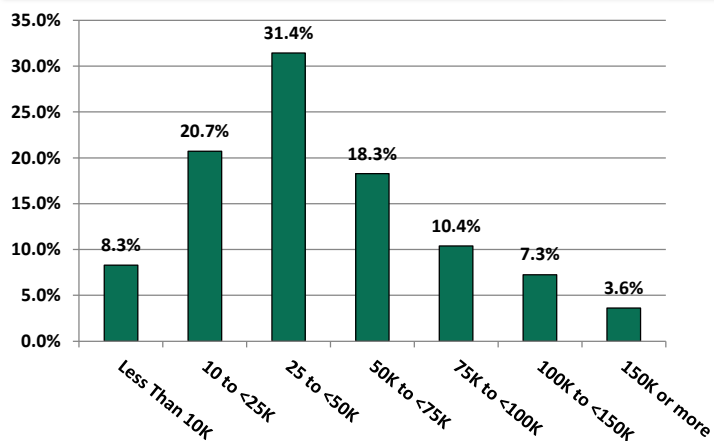
Household Language, 2010



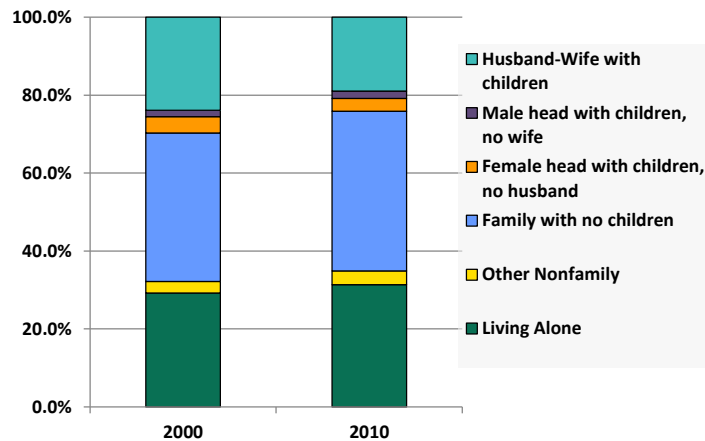
Demographic Profile

Martinsburg Community Library

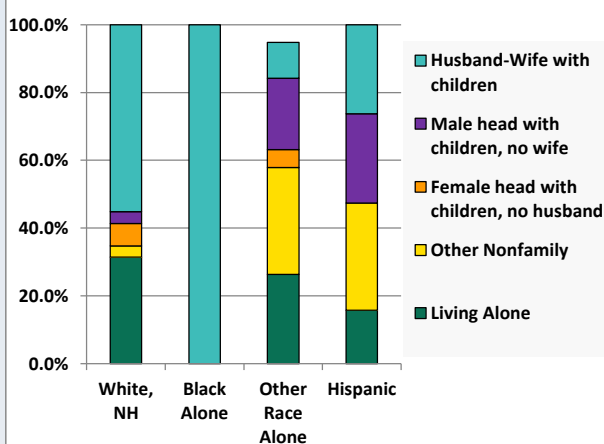
Household Income Distribution, 2008-2012



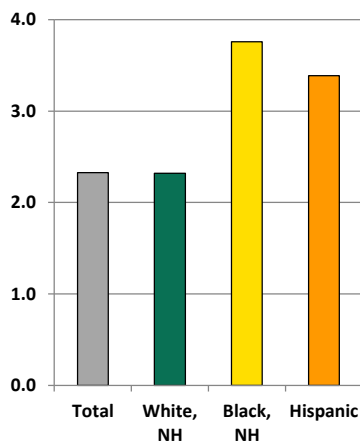
Household Type, 2000 and 2010



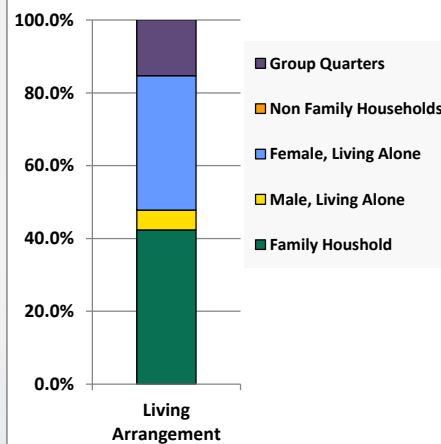
Household Type by Race/Ethnicity, 2010



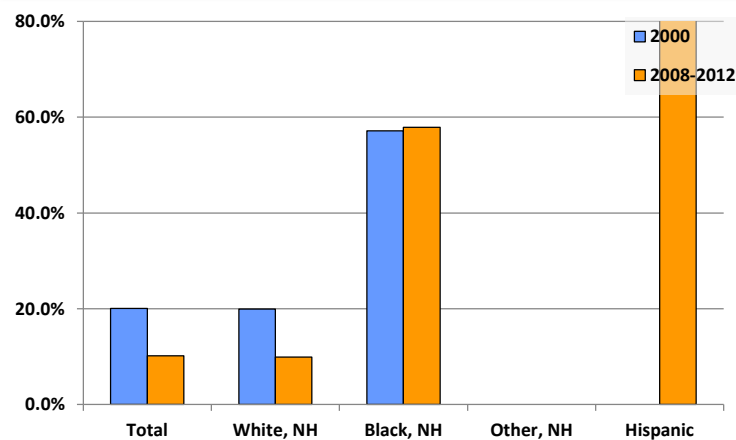
Average Household Size, 2010



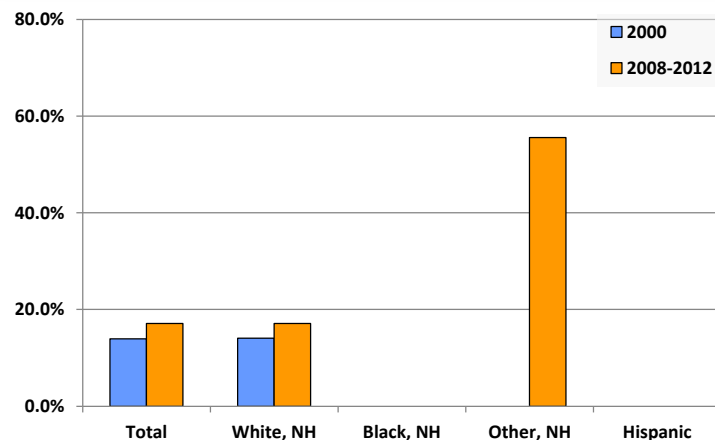
Living Arrangements 65+, 2008-2012



Percent of Adults that Did Not Complete High School



Percent of Adults Who Attained a Bachelor's Degree or Higher



Reference Data

Martinsburg Community Library

	Total Population	White, Non- Hispanic	Black, Non- Hispanic	Other, Non- Hispanic	Detail for Other, Non-Hispanic					Hispanic or Latino
					AIAN	Asian	NHOPI	Some Other Race	Two or More Races	
A. Total Population										
2000 Total	4,992	4,950	6	21	2	2	0	0	17	15
2000 pct of Total	100.0%	99.2%	0.1%	0.4%	0.0%	0.0%	0.0%	0.0%	0.3%	0.3%
2010 Total	5,110	4,991	17	35	4	4	0	0	27	66
2010 pct of Total	100.0%	97.7%	0.3%	0.7%	0.1%	0.1%	0.0%	0.0%	0.5%	1.3%
B. Population by Major Age Groups by Race and Ethnicity										
2000										
0-19	1,222	1,206	2	9	0	0	0	0	9	6
20-64	2,624	2,605	4	9	2	1	0	0	6	6
65+	1,145	1,139	0	3	0	1	0	0	2	3
85+	292	291	0	1	0	0	0	0	1	0
2010										
0-19	1,150	1,104	12	17	2	1	0	0	13	17
20-64	2,576	2,517	5	14	2	2	0	0	9	41
65+	1,384	1,370	0	5	0	1	0	0	4	8
85+	376	374	0	1	0	0	0	0	1	1
C. Age Mix for Each Racial and Ethnic Group										
2000										
0-19	24.5%	24.4%	33.3%	42.9%	0.0%	0.0%	0.0%	0.0%	52.9%	40.0%
20-64	52.6%	52.6%	66.7%	42.9%	100.0%	50.0%	0.0%	0.0%	35.3%	40.0%
65+	22.9%	23.0%	0.0%	14.3%	0.0%	50.0%	0.0%	0.0%	11.8%	20.0%
85+	5.8%	5.9%	0.0%	4.8%	0.0%	0.0%	0.0%	0.0%	5.9%	0.0%
2010										
0-19	22.5%	22.1%	70.6%	48.6%	50.0%	25.0%	0.0%	0.0%	48.1%	25.8%
20-64	50.4%	50.4%	29.4%	40.0%	50.0%	50.0%	0.0%	0.0%	33.3%	62.1%
65+	27.1%	27.4%	0.0%	14.3%	0.0%	25.0%	0.0%	0.0%	14.8%	12.1%
85+	7.4%	7.5%	0.0%	2.9%	0.0%	0.0%	0.0%	0.0%	3.7%	1.5%
D. Racial and Ethnic Composition of Each Age Group										
2000										
0-19	100.0%	98.7%	0.2%	0.7%	0.0%	0.0%	0.0%	0.0%	0.7%	0.5%
20-64	100.0%	99.3%	0.2%	0.3%	0.1%	0.0%	0.0%	0.0%	0.2%	0.2%
65+	100.0%	99.5%	0.0%	0.3%	0.0%	0.1%	0.0%	0.0%	0.2%	0.3%
85+	100.0%	99.7%	0.0%	0.3%	0.0%	0.0%	0.0%	0.0%	0.3%	0.0%
2010										
0-19	100.0%	96.0%	1.0%	1.5%	0.2%	0.1%	0.0%	0.0%	1.1%	1.5%
20-64	100.0%	97.7%	0.2%	0.5%	0.1%	0.1%	0.0%	0.0%	0.3%	1.6%
65+	100.0%	99.0%	0.0%	0.4%	0.0%	0.1%	0.0%	0.0%	0.3%	0.6%
85+	100.0%	99.5%	0.0%	0.3%	0.0%	0.0%	0.0%	0.0%	0.3%	0.3%
E. Population Growth										
2000-2010, Change										
0-19	-72	-102	10	8	2	1	0	0	4	11
20-64	-48	-88	1	5	0	1	0	0	3	35
65+	239	231	0	2	0	0	0	0	2	5
85+	84	83	0	0	0	0	0	0	0	1
Total	118	41	11	14	2	2	0	0	10	51
2000-2010, Pct Change										
0-19	-5.9%	-8.5%	500.0%	88.9%	0.0%	0.0%	0.0%	0.0%	44.4%	183.3%
20-64	-1.8%	-3.4%	25.0%	55.6%	0.0%	100.0%	0.0%	0.0%	50.0%	583.3%
65+	20.9%	20.3%	0.0%	66.7%	0.0%	0.0%	0.0%	0.0%	100.0%	166.7%
85+	28.8%	28.5%	0.0%	0.0%	0.0%	0.0%	0.0%	0.0%	0.0%	0.0%
Total	2.4%	0.8%	183.3%	66.7%	100.0%	100.0%	0.0%	0.0%	58.8%	340.0%

Source: Decennial Census 2010, 2000, American Community Survey 2008-2012

Prepared for the Pennsylvania State Library by The Pennsylvania State Data Center, 9/2014

Reference Data

Martinsburg Community Library

	Total Population	White, Non- Hispanic	Black, Non- Hispanic	Other, Non- Hispanic	Detail for Other, Non-Hispanic					Hispanic or Latino
					AIAN	Asian	NHOPI	Some Other	Two or More	
								Race	Races	
F. Population by Library-Defined Age Groups, 2010										
0-5	375	356	6	3	0	0	0	0	3	10
6-10	303	291	5	5	1	0	0	0	4	1
11-13	154	149	0	2	1	0	0	0	1	2
14-18	277	268	1	6	0	1	0	0	5	1
19-32	691	653	4	4	0	0	0	0	4	30
33-45	702	689	1	4	1	1	0	0	1	8
46-64	1,224	1,214	0	5	1	1	0	0	3	5
65-84	1,008	996	0	4	0	1	0	0	3	7
85+	376	374	0	1	0	0	0	0	1	1
Total	5,110	4,991	17	35	4	4	0	0	27	66
G. Population by 5-Year Age Cohorts, 2010										
0-4	314	299	4	3	0	0	0	0	3	8
5-9	293	278	7	5	1	0	0	0	4	3
10-14	278	270	1	4	1	1	0	0	2	2
15-19	264	256	0	4	0	0	0	0	4	4
20-24	247	225	3	2	0	0	0	0	2	17
25-29	230	220	1	2	0	0	0	0	2	7
30-34	280	273	0	1	0	1	0	0	0	6
35-39	284	279	1	0	0	0	0	0	0	4
40-44	237	233	0	3	1	0	0	0	1	1
45-49	332	328	0	2	0	1	0	0	1	1
50-54	339	334	0	2	1	0	0	0	1	3
55-59	339	337	0	1	0	0	0	0	1	1
60-64	289	288	0	0	0	0	0	0	0	1
65-69	290	285	0	2	0	0	0	0	2	3
70-74	244	241	0	1	0	0	0	0	1	2
75-79	235	234	0	0	0	0	0	0	0	1
80-84	238	236	0	1	0	1	0	0	0	1
85-89	210	210	0	0	0	0	0	0	0	0
90-94	124	124	0	0	0	0	0	0	0	0
95-99	38	36	0	1	0	0	0	0	1	1
100+	4	4	0	0	0	0	0	0	0	0
Total	5,110	4,991	17	35	4	4	0	0	27	66

Source: Decennial Census 2010, 2000, American Community Survey 2008-2012

Prepared for the Pennsylvania State Library by The Pennsylvania State Data Center, 9/2014

Reference Data

Martinsburg Community Library

H. Income Distribution, 2008-2012

Range (in thousands)	Households	Pct of Total
<\$10K	175	8.3%
\$10K to <\$25K	436	20.7%
\$25K to <\$50K	662	31.4%
\$50K to <\$75K	385	18.3%
\$75K to <\$100K	219	10.4%
\$100K to <\$150K	153	7.3%
\$150K+	76	3.6%

I. Household Type, 2010

Household Type	2000	2000pct	2010	2010pct
Total Households	1,950	100.0%	2,074	100.0%
Family Households	1,323	67.8%	1,350	65.1%
Husband-wife, no children w/children	465	23.9%	393	18.9%
Female head, no husband, w/ children	82	4.2%	68	3.3%
Male head, no wife, w/ children	32	1.7%	39	1.9%
Without children	744	38.1%	850	41.0%
Nonfamily households	627	32.2%	724	34.9%
Living alone	570	29.3%	651	31.4%
Other nonfamily	57	2.9%	73	3.5%

J. Household Type by Race and Ethnicity, 2008-2012

Household Type	White, NH	Black, NH	Other, NH	Hispanic
Total Households	2,043	1	19	19
Husband wife family	55.2%	100.0%	10.5%	26.3%
Family with male head, no wife	3.5%	0.0%	21.1%	26.3%
family with female head, no husband	6.6%	0.0%	5.3%	0.0%
Living alone	31.5%	0.0%	26.3%	15.8%
Other nonfamily	3.2%	0.0%	31.6%	31.6%

K. Poverty, 2008-2012

Families	Poverty	PA
All families	6.2%	9.1%
Families w/ related children	11.9%	15.3%
Female householder, no husband present	31.7%	28.8%
Female householder, no husband present, w/ related children	46.1%	39.2%
All people	9.6%	13.1%
Under 18 years	10.2%	18.4%
18 to 64 years	7.0%	12.3%
65 years and over	15.1%	8.4%

L. Educational Attainment by Race and Ethnicity, 2008-2012

Education Level	White, NH	Black	Other	Hispanic	Total
Population 25 years and over	3,537	19	9	1	3,566
Less than high school	9.9%	57.9%	0%	100.0%	10.2%
High school graduate (includes equivalency	52.3%	21.1%	0%	0.0%	52.0%
Some college or associates degree	20.6%	21.1%	44%	0.0%	20.6%
Bachelors degree or higher	17.1%	0.0%	56%	0.0%	17.1%

M. Occupation, 2008-2012

Occupation	Estimate	Percent
Civilian population age 16 years and over	2,222	100.0%
Management, professional, and related occupations	676	30.4%
Service occupations	379	17.1%
Sales and office occupations	416	18.7%
Farming, fishing, and forestry occupations	20	0.9%
Construction, extraction, maintenance, and repair occupations	215	9.7%
Production, transportation, and material moving occupations	514	23.1%

N. Class of Worker, 2008-2012

Occupation	Estimate	Percent
Civilian population age 16 years and over	2,222	100.0%
Private, for profit, wage and salary employee	1,541	69.4%
Private, not for profit, wage and salary employee	228	10.3%
Private, for profit, wage and salary self-employed in own business	45	2.0%
Government workers	274	12.3%
Self-employed in own not incorporated business	133	6.0%
Unpaid family workers in family business	0	0.0%