

Demographic Profile Mather Memorial Library

Population Growth: The total population of the Mather Memorial Library service area increased by 1.7 percent over the past decade to 2,685; this growth rate was lower than the statewide rate of 3.4 percent.

Age and Sex: In 2010, the Mather Memorial Library service area had a total population of 2,685 - 1,345 males (50.1 percent) and 1,340 females (49.9 percent). The age structure of the population in 2010 was as follows: 25.7 percent of the population was under 20 years old, 58.7 percent was 20 to 64 years old and 15.6 percent was 65 years or older.

Race and Ethnicity: For people reporting one race alone, not of Hispanic ethnicity, 97.0 percent were White; .5 percent were Black or African American; 1.3 percent were Other Race Alone.¹ A total of 31 or 1.2 percent of the population were Hispanic.²

Households: In 2010, there were 1,077 households in the Mather Memorial Library service area. The average household size was 2.49 people. Families made up 68.2 percent of the households. This figure includes both families with (26.4 percent) and without (41.9 percent) children. Of families with children less than 18 years old, 18.6 percent were married-couple families, 4.6 percent were female householder families with no husband present, and the remaining (3.2 percent) were male-headed households with no wife present.

Education: The educational attainment of the population 25 years and over was lower in the Mather Memorial Library service area than in Pennsylvania. During the period 2008-2012, 17.6 percent of residents had earned a Bachelor's degree or higher, compared with 27.0 percent statewide. A total of 164 or 9.1 percent had not completed high school, compared with 11.7 percent for the commonwealth as a whole.

Income and Poverty: Households with incomes of \$25,000 to \$49,999 (30.7 percent) made up the largest percent of households in the Mather Memorial Library service area in 2008-2012. For comparison, 24.4 percent of commonwealth households were in this range during the period.

In 2008-2012, the overall poverty rate for the Mather Memorial Library service area was lower than Pennsylvania (6.5 percent compared to 13.1 percent). The poverty rate for the population under 18 years of age was 6.7 percent, compared with 6.7 percent of people 18 to 64 years and 5.3 percent for those aged 65 years and over. A total of 24 or 3.4 percent of all families had incomes below poverty level. In 2008-2012, 5.3 percent of families with related children and 27.6 percent of families with a female householder and no husband with related children present had incomes below the poverty level.

Class of Worker and Occupation: In 2008-2012, 83.7 percent of the workforce was private wage and salary workers; 8.6 percent were federal, state, or local government workers; and 7.5 percent were self-employed in their own (not incorporated) business.

The top occupation group for the civilian employed population 16 years and over in the Mather Memorial Library service area in 2008-2012 was Management, business, science, and arts (26.6 percent).

¹ Other race includes those who identified themselves as American Indian/Alaska Native, Asian, Native Hawaiian/Other Pacific Islander, Some Other Race and Two or More Races on the 2010 Census form.

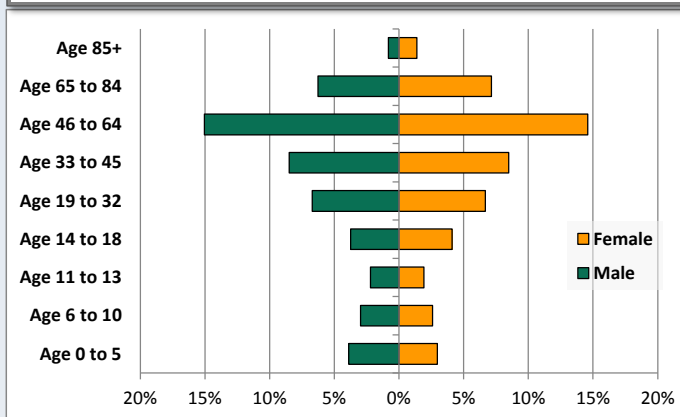
² People of Hispanic origin may be of any race.

Demographic Profile

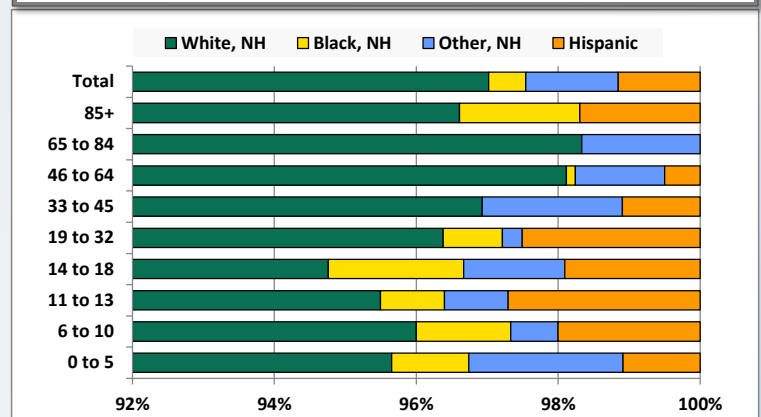
Mather Memorial Library

Key Indicators		
	2000	2010
Population Growth		
Total Population	2,640	2,685
10-Year Growth	N/A	1.7%
Diversity		
White Alone, Non-Hispanic	97.7%	97.0%
Black Alone, Non-Hispanic	0.3%	0.5%
Other Race Alone, Non-Hispanic	1.6%	1.3%
Percent Hispanic	0.4%	1.2%
Aging		
Percent 65 Years and Over	13.0%	15.6%
Households		
Percent Married Couple with Own Children	27.4%	18.6%
Percent Living Alone	20.6%	25.5%

Population by Library-Defined Age Group, 2010



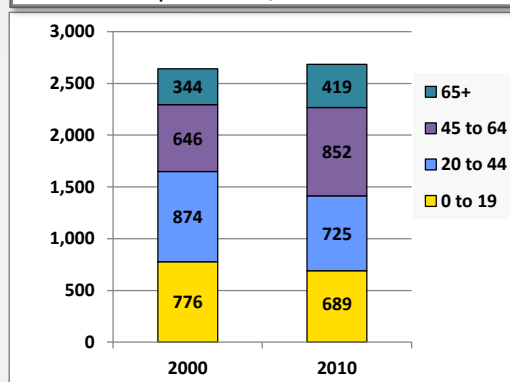
Race/Ethnicity by Library-Defined Age Group, 2010



Population Growth by Library-Defined Age Group, 2000 to 2010

Age Group	2010	Change	
		Numeric	Percent
Total	2,685	45	1.7%
85+	59	35	145.8%
65 to 84	360	40	12.5%
46 to 64	796	193	32.0%
33 to 45	456	-101	-18.1%
19 to 32	359	-24	-6.3%
14 to 18	210	0	0.0%
11 to 13	111	-3	-2.6%
6 to 10	150	-69	-31.5%
0 to 5	184	-26	-12.4%

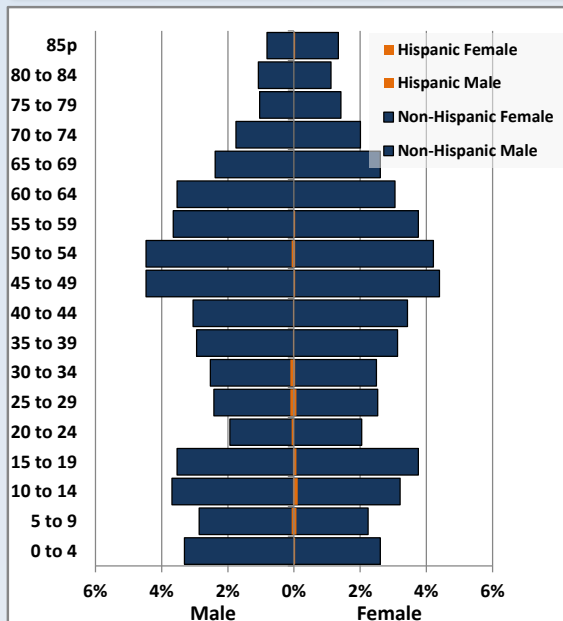
Population Total, 2000 and 2010



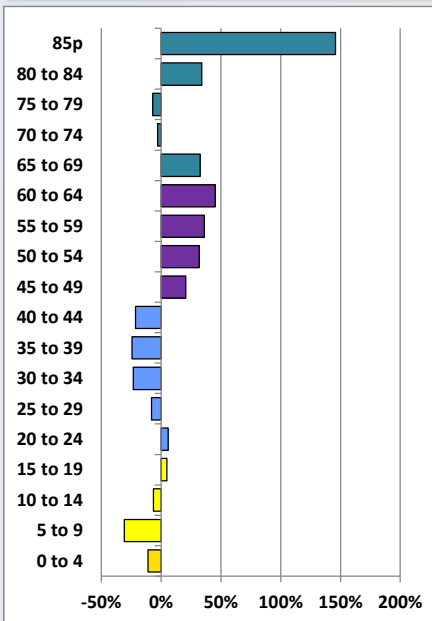
Demographic Profile

Mather Memorial Library

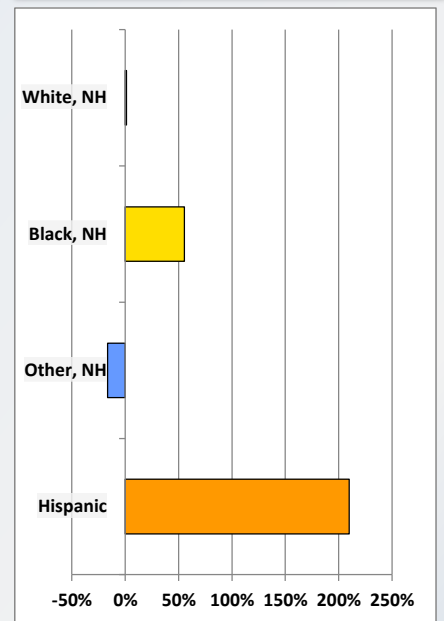
Population by 5-Year Age Cohorts



Pop Change by Age, 2000 to 2010

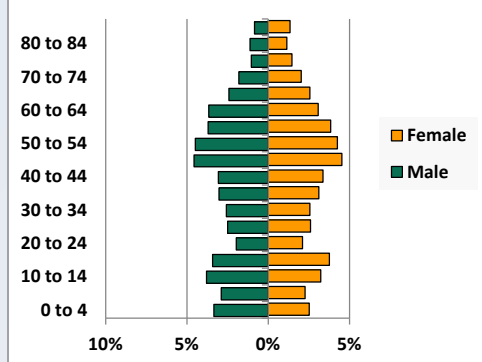


Pop Change by Race/Ethnicity, 2000 to 2010

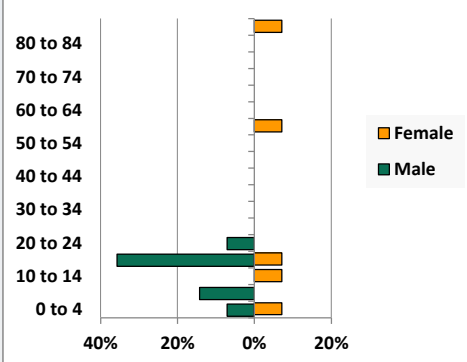


Population by Age, Race and Ethnicity 2010

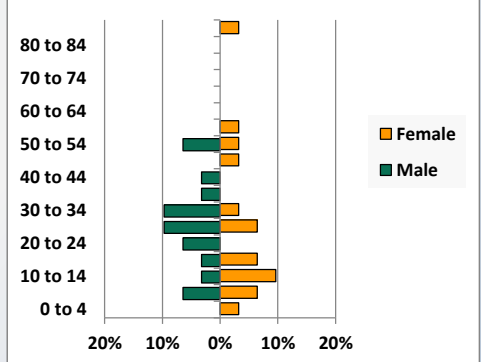
White, Not Hispanic



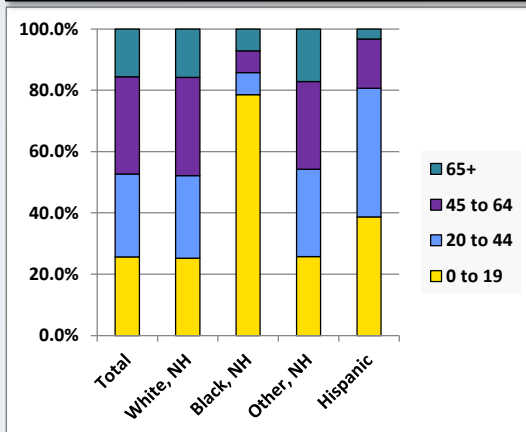
Black, Non-Hispanic



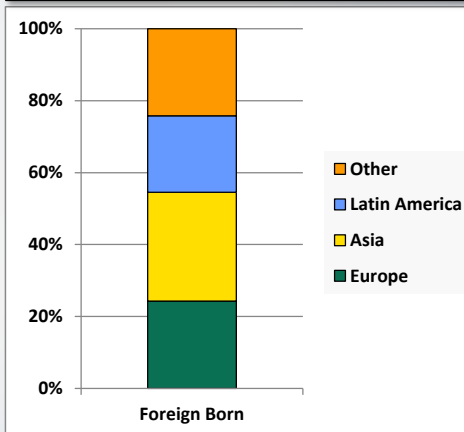
Hispanic



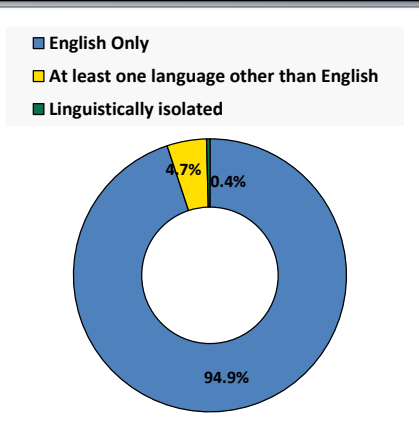
Age by Race and Ethnicity, 2010



Foreign Born, 2010



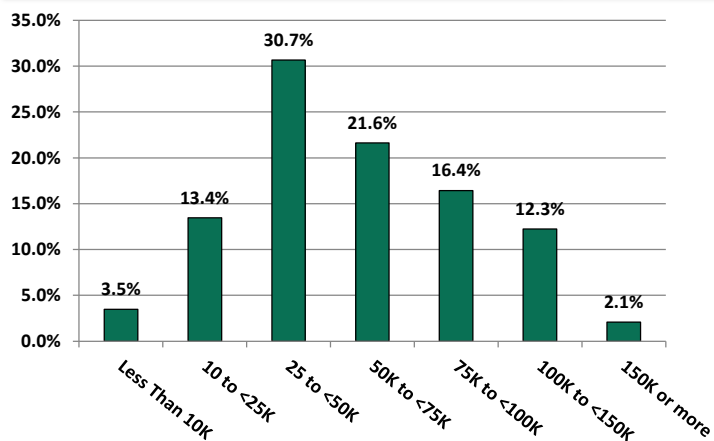
Household Language, 2010



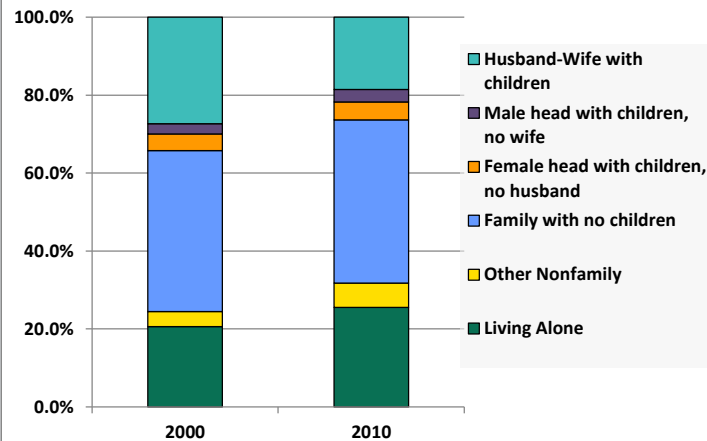
Demographic Profile

Mather Memorial Library

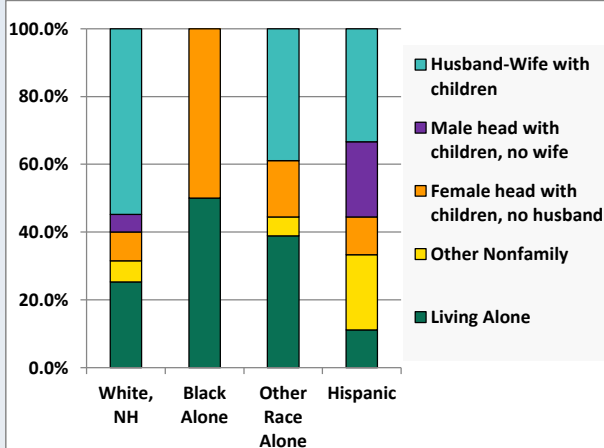
Household Income Distribution, 2008-2012



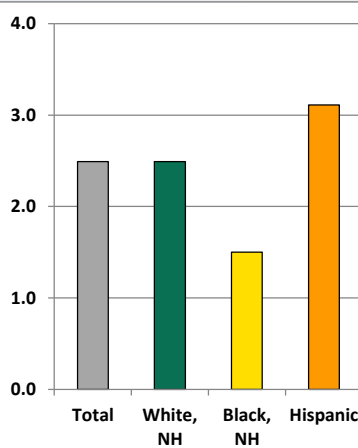
Household Type, 2000 and 2010



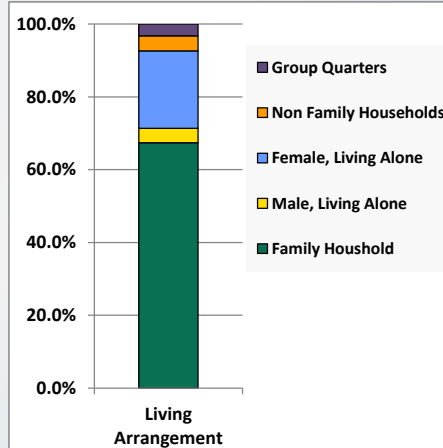
Household Type by Race/Ethnicity, 2010



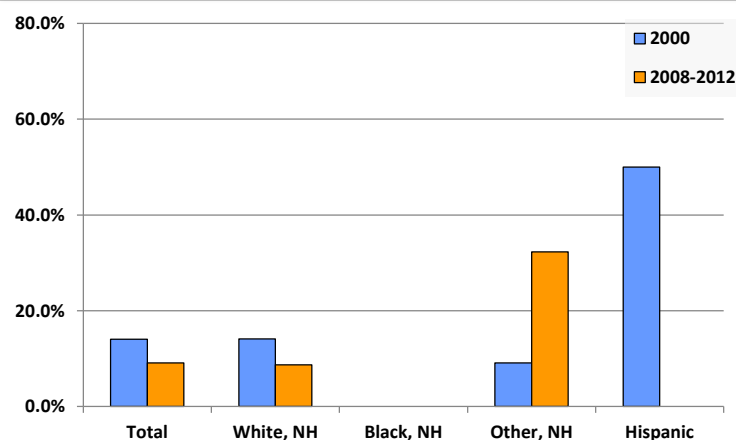
Average Household Size, 2010



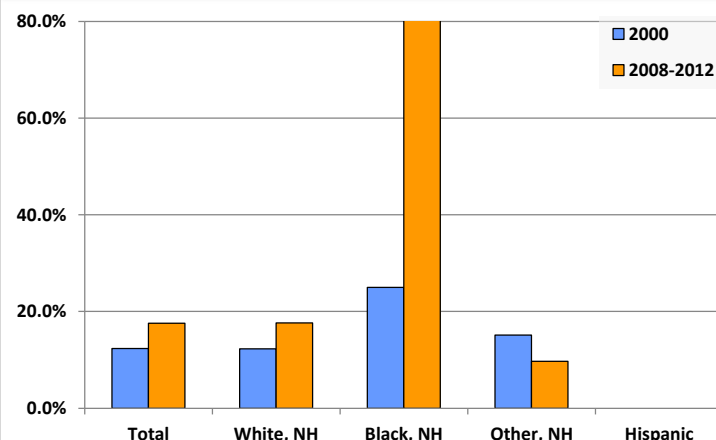
Living Arrangements 65+, 2008-2012



Percent of Adults that Did Not Complete High School



Percent of Adults Who Attained a Bachelor's Degree or Higher



Reference Data

Mather Memorial Library

					Detail for Other, Non-Hispanic					
	Total Population	White, Non- Hispanic	Black, Non- Hispanic	Other, Non- Hispanic	AIAN	Asian	NHOPI	Some Other	Two or More	Hispanic or
								Race	Races	Latino
A. Total Population										
2000 Total	2,640	2,579	9	42	17	3	0	0	22	10
2000 pct of Total	100.0%	97.7%	0.3%	1.6%	0.6%	0.1%	0.0%	0.0%	0.8%	0.4%
2010 Total	2,685	2,605	14	35	9	5	0	0	21	31
2010 pct of Total	100.0%	97.0%	0.5%	1.3%	0.3%	0.2%	0.0%	0.0%	0.8%	1.2%
B. Population by Major Age Groups by Race and Ethnicity										
2000										
0-19	776	745	3	24	9	3	0	0	12	4
20-64	1,520	1,492	6	16	8	0	0	0	8	6
65+	344	342	0	2	0	0	0	0	2	0
85+	24	24	0	0	0	0	0	0	0	0
2010										
0-19	689	657	11	9	1	2	0	0	6	12
20-64	1,577	1,537	2	20	6	3	0	0	11	18
65+	419	411	1	6	2	0	0	0	4	1
85+	59	57	1	0	0	0	0	0	0	1
C. Age Mix for Each Racial and Ethnic Group										
2000										
0-19	29.4%	28.9%	33.3%	57.1%	52.9%	100.0%	0.0%	0.0%	54.5%	40.0%
20-64	57.6%	57.9%	66.7%	38.1%	47.1%	0.0%	0.0%	0.0%	36.4%	60.0%
65+	13.0%	13.3%	0.0%	4.8%	0.0%	0.0%	0.0%	0.0%	9.1%	0.0%
85+	0.9%	0.9%	0.0%	0.0%	0.0%	0.0%	0.0%	0.0%	0.0%	0.0%
2010										
0-19	25.7%	25.2%	78.6%	25.7%	11.1%	40.0%	0.0%	0.0%	28.6%	38.7%
20-64	58.7%	59.0%	14.3%	57.1%	66.7%	60.0%	0.0%	0.0%	52.4%	58.1%
65+	15.6%	15.8%	7.1%	17.1%	22.2%	0.0%	0.0%	0.0%	19.0%	3.2%
85+	2.2%	2.2%	7.1%	0.0%	0.0%	0.0%	0.0%	0.0%	0.0%	3.2%
D. Racial and Ethnic Composition of Each Age Group										
2000										
0-19	100.0%	96.0%	0.4%	3.1%	1.2%	0.4%	0.0%	0.0%	1.5%	0.5%
20-64	100.0%	98.2%	0.4%	1.1%	0.5%	0.0%	0.0%	0.0%	0.5%	0.4%
65+	100.0%	99.4%	0.0%	0.6%	0.0%	0.0%	0.0%	0.0%	0.6%	0.0%
85+	100.0%	100.0%	0.0%	0.0%	0.0%	0.0%	0.0%	0.0%	0.0%	0.0%
2010										
0-19	100.0%	95.4%	1.6%	1.3%	0.1%	0.3%	0.0%	0.0%	0.9%	1.7%
20-64	100.0%	97.5%	0.1%	1.3%	0.4%	0.2%	0.0%	0.0%	0.7%	1.1%
65+	100.0%	98.1%	0.2%	1.4%	0.5%	0.0%	0.0%	0.0%	1.0%	0.2%
85+	100.0%	96.6%	1.7%	0.0%	0.0%	0.0%	0.0%	0.0%	0.0%	1.7%
E. Population Growth										
2000-2010, Change										
0-19	-87	-88	8	-15	-8	-1	0	0	-6	8
20-64	57	45	-4	4	-2	3	0	0	3	12
65+	75	69	1	4	2	0	0	0	2	1
85+	35	33	1	0	0	0	0	0	0	1
Total	45	26	5	-7	-8	2	0	0	-1	21
2000-2010, Pct Change										
0-19	-11.2%	-11.8%	266.7%	-62.5%	-88.9%	-33.3%	0.0%	0.0%	-50.0%	200.0%
20-64	3.8%	3.0%	-66.7%	25.0%	-25.0%	0.0%	0.0%	0.0%	37.5%	200.0%
65+	21.8%	20.2%	0.0%	200.0%	0.0%	0.0%	0.0%	0.0%	100.0%	0.0%
85+	145.8%	137.5%	0.0%	0.0%	0.0%	0.0%	0.0%	0.0%	0.0%	0.0%
Total	1.7%	1.0%	55.6%	-16.7%	-47.1%	66.7%	0.0%	0.0%	-4.5%	210.0%

Source: Decennial Census 2010, 2000, American Community Survey 2008-2012

Prepared for the Pennsylvania State Library by The Pennsylvania State Data Center, 9/2014

Reference Data

Mather Memorial Library

	Total Population	White, Non- Hispanic	Black, Non- Hispanic	Other, Non- Hispanic	Detail for Other, Non-Hispanic					Hispanic or Latino	
					AIAN	Asian	NHOPI	Some Other	Two or More		
								Race	Races		
F. Population by Library-Defined Age Groups, 2010											
0-5	184	176	2	4	0	0	0	0	4	2	
6-10	150	144	2	1	1	0	0	0	0	3	
11-13	111	106	1	1	0	0	0	0	1	3	
14-18	210	199	4	3	0	2	0	0	1	4	
19-32	359	346	3	1	0	0	0	0	1	9	
33-45	456	442	0	9	3	2	0	0	4	5	
46-64	796	781	1	10	3	1	0	0	6	4	
65-84	360	354	0	6	2	0	0	0	4	0	
85+	59	57	1	0	0	0	0	0	0	1	
Total	2,685	2,605	14	35	9	5	0	0	21	31	
G. Population by 5-Year Age Cohorts, 2010											
0-4	160	153	2	4	0	0	0	0	4	1	
5-9	141	134	2	1	1	0	0	0	0	4	
10-14	189	183	1	1	0	0	0	0	1	4	
15-19	199	187	6	3	0	2	0	0	1	3	
20-24	109	106	1	0	0	0	0	0	0	2	
25-29	138	133	0	0	0	0	0	0	0	5	
30-34	139	134	0	1	0	0	0	0	1	4	
35-39	164	160	0	3	0	2	0	0	1	1	
40-44	175	168	0	6	3	0	0	0	3	1	
45-49	239	237	0	1	0	0	0	0	1	1	
50-54	236	228	0	5	2	1	0	0	2	3	
55-59	200	196	1	2	0	0	0	0	2	1	
60-64	177	175	0	2	1	0	0	0	1	0	
65-69	134	130	0	4	2	0	0	0	2	0	
70-74	101	100	0	1	0	0	0	0	1	0	
75-79	66	65	0	1	0	0	0	0	1	0	
80-84	59	59	0	0	0	0	0	0	0	0	
85-89	37	35	1	0	0	0	0	0	0	1	
90-94	20	20	0	0	0	0	0	0	0	0	
95-99	2	2	0	0	0	0	0	0	0	0	
100+	0	0	0	0	0	0	0	0	0	0	
Total	2,685	2,605	14	35	9	5	0	0	21	31	

Source: Decennial Census 2010, 2000, American Community Survey 2008-2012

Prepared for the Pennsylvania State Library by The Pennsylvania State Data Center, 9/2014

Reference Data

Mather Memorial Library

H. Income Distribution, 2008-2012

Range (in thousands)	Households	Pct of Total
<\$10K	35	3.5%
\$10K to <\$25K	135	13.4%
\$25K to <\$50K	308	30.7%
\$50K to <\$75K	217	21.6%
\$75K to <\$100K	165	16.4%
\$100K to <\$150K	123	12.3%
\$150K+	21	2.1%

I. Household Type, 2010

Household Type	2000	2000pct	2010	2010pct
Total Households	1,001	100.0%	1,077	100.0%
Family Households	756	75.5%	735	68.2%
Husband-wife, no children w/children	274	27.4%	200	18.6%
Female head, no husband, w/ children	43	4.3%	50	4.6%
Male head, no wife, w/ children	26	2.6%	34	3.2%
Without children	413	41.3%	451	41.9%
Nonfamily households	245	24.5%	342	31.8%
Living alone	206	20.6%	275	25.5%
Other nonfamily	39	3.9%	67	6.2%

J. Household Type by Race and Ethnicity, 2008-2012

Household Type	White, NH	Black, NH	Other, NH	Hispanic
Total Households	1,051	2	18	9
Husband wife family	54.8%	0.0%	38.9%	33.3%
Family with male head, no wife	5.1%	0.0%	0.0%	22.2%
family with female head, no husband	8.6%	50.0%	16.7%	11.1%
Living alone	25.3%	50.0%	38.9%	11.1%
Other nonfamily	6.2%	0.0%	5.6%	22.2%

K. Poverty, 2008-2012

Families	Poverty	PA
All families	3.4%	9.1%
Families w/ related children	5.3%	15.3%
Female householder, no husband present	20.3%	28.8%
Female householder, no husband present, w/ related children	27.6%	39.2%
All people	6.5%	13.1%
Under 18 years	6.7%	18.4%
18 to 64 years	6.7%	12.3%
65 years and over	5.3%	8.4%

L. Educational Attainment by Race and Ethnicity, 2008-2012

Education Level	White, NH	Black	Other	Hispanic	Total
Population 25 years and over	1,765	2	31	7	1,800
Less than high school	8.7%	0.0%	32%	0.0%	9.1%
High school graduate (includes equivalency)	49.3%	0.0%	52%	71.4%	49.3%
Some college or associates degree	24.3%	0.0%	6%	28.6%	24.1%
Bachelors degree or higher	17.6%	100.0%	10%	0.0%	17.6%

M. Occupation, 2008-2012

Occupation	Estimate	Percent
Civilian population age 16 years and over	1,238	100.0%
Management, professional, and related occupations	329	26.6%
Service occupations	167	13.5%
Sales and office occupations	278	22.5%
Farming, fishing, and forestry occupations	6	0.5%
Construction, extraction, maintenance, and repair occupations	137	11.1%
Production, transportation, and material moving occupations	321	25.9%

N. Class of Worker, 2008-2012

Occupation	Estimate	Percent
Civilian population age 16 years and over	1,238	100.0%
Private, for profit, wage and salary employee	861	69.5%
Private, not for profit, wage and salary employee	142	11.5%
Private, for profit, wage and salary self-employed in own business	33	2.7%
Government workers	106	8.6%
Self-employed in own not incorporated business	93	7.5%
Unpaid family workers in family business	3	0.2%