

## Demographic Profile

### Montgomery House Warrior Run Area Public Library

**Population Growth:** The total population of the Montgomery House Warrior Run Area Public Library service area increased by 2.9 percent over the past decade to 9,739; this growth rate was lower than the statewide rate of 3.4 percent.

**Age and Sex:** In 2010, the Montgomery House Warrior Run Area Public Library service area had a total population of 9,739 - 4,795 males (49.2 percent) and 4,944 females (50.8 percent). The age structure of the population in 2010 was as follows: 24.9 percent of the population was under 20 years old, 57.4 percent was 20 to 64 years old and 17.8 percent was 65 years or older.

**Race and Ethnicity:** For people reporting one race alone, not of Hispanic ethnicity, 97.5 percent were White; .6 percent were Black or African American; .9 percent were Other Race Alone.<sup>1</sup> A total of 90 or .9 percent of the population were Hispanic.<sup>2</sup>

**Households:** In 2010, there were 3,917 households in the Montgomery House Warrior Run Area Public Library service area. The average household size was 2.46 people. Families made up 69.1 percent of the households. This figure includes both families with (26.4 percent) and without (42.7 percent) children. Of families with children less than 18 years old, 20.4 percent were married-couple families, 4.2 percent were female householder families with no husband present, and the remaining (1.8 percent) were male-headed households with no wife present.

**Education:** The educational attainment of the population 25 years and over was lower in the Montgomery House Warrior Run Area Public Library service area than in Pennsylvania. During the period 2008-2012, 13.1 percent of residents had earned a Bachelor's degree or higher, compared with 27.0 percent statewide. A total of 980 or 14.5 percent had not completed high school, compared with 11.7 percent for the commonwealth as a whole.

**Income and Poverty:** Households with incomes of \$25,000 to \$49,999 (33.1 percent) made up the largest percent of households in the Montgomery House Warrior Run Area Public Library service area in 2008-2012. For comparison, 24.4 percent of commonwealth households were in this range during the period.

In 2008-2012, the overall poverty rate for the Montgomery House Warrior Run Area Public Library service area was lower than Pennsylvania (10.3 percent compared to 13.1 percent). The poverty rate for the population under 18 years of age was 18.5 percent, compared with 7.3 percent of people 18 to 64 years and 9.8 percent for those aged 65 years and over. A total of 192 or 7.1 percent of all families had incomes below poverty level. In 2008-2012, 13.3 percent of families with related children and 35.9 percent of families with a female householder and no husband with related children present had incomes below the poverty level.

**Class of Worker and Occupation:** In 2008-2012, 77.4 percent of the workforce was private wage and salary workers; 13.5 percent were federal, state, or local government workers; and 7.9 percent were self-employed in their own (not incorporated) business.

The top occupation group for the civilian employed population 16 years and over in the Montgomery House Warrior Run Area Public Library service area in 2008-2012 was Management, business, science, and arts (23.9 percent).

---

<sup>1</sup> Other race includes those who identified themselves as American Indian/Alaska Native, Asian, Native Hawaiian/Other Pacific Islander, Some Other Race and Two or More Races on the 2010 Census form.

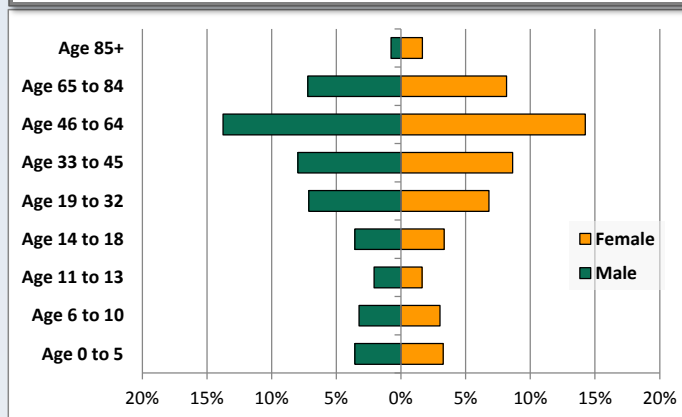
<sup>2</sup> People of Hispanic origin may be of any race.

# Demographic Profile

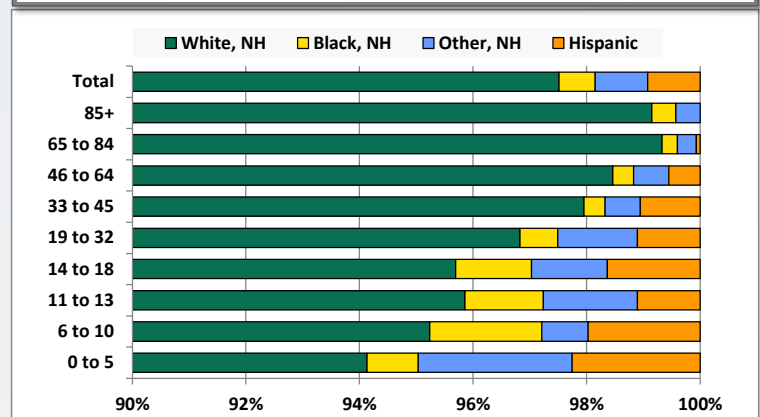
Montgomery House Warrior Run Area Public Library

Key Indicators		
	2000	2010
<b>Population Growth</b>		
Total Population	9,463	9,739
10-Year Growth	N/A	2.9%
<b>Diversity</b>		
White Alone, Non-Hispanic	98.7%	97.5%
Black Alone, Non-Hispanic	0.3%	0.6%
Other Race Alone, Non-Hispanic	0.6%	0.9%
Percent Hispanic	0.4%	0.9%
<b>Aging</b>		
Percent 65 Years and Over	15.3%	17.8%
<b>Households</b>		
Percent Married Couple with Own Children	25.3%	20.4%
Percent Living Alone	23.3%	25.5%

Population by Library-Defined Age Group, 2010



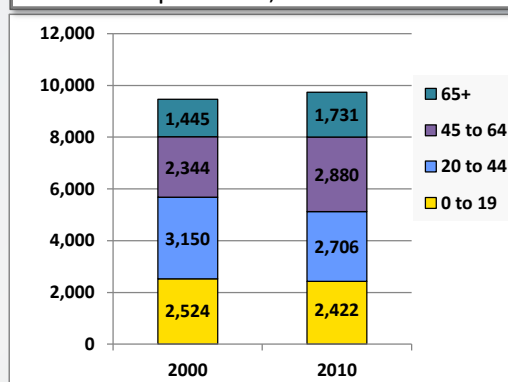
Race/Ethnicity by Library-Defined Age Group, 2010



Population Growth by Library-Defined Age Group, 2000 to 2010

Age Group	2010	Change	
		Numeric	Percent
Total	9,739	276	2.9%
85+	235	81	52.6%
65 to 84	1,496	205	15.9%
46 to 64	2,727	542	24.8%
33 to 45	1,615	-273	-14.5%
19 to 32	1,356	-154	-10.2%
14 to 18	674	-11	-1.6%
11 to 13	362	-64	-15.0%
6 to 10	609	-25	-3.9%
0 to 5	665	-25	-3.6%

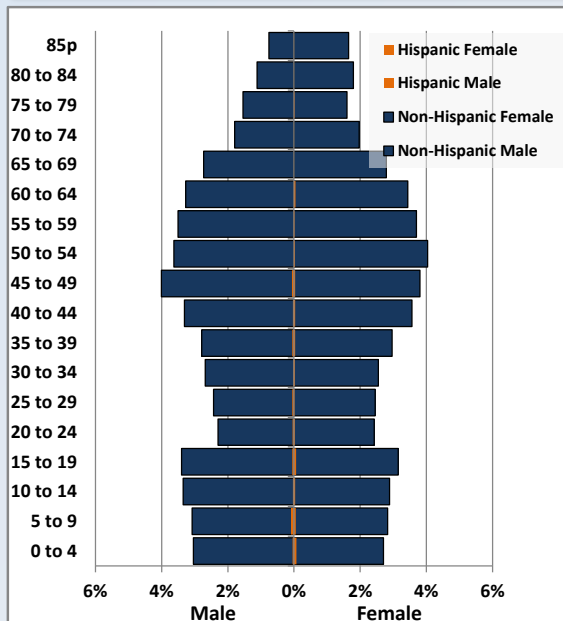
Population Total, 2000 and 2010



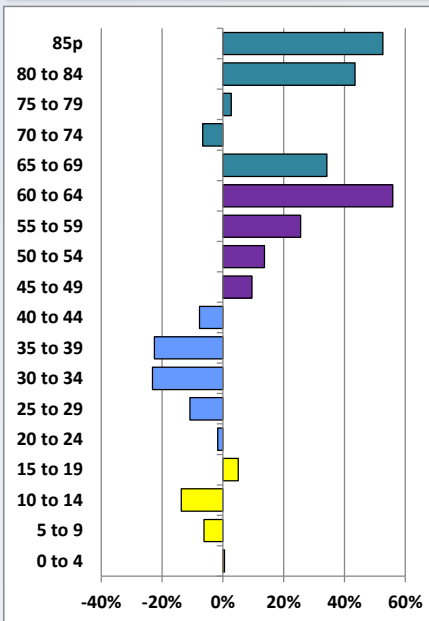
# Demographic Profile

Montgomery House Warrior Run Area Public Library

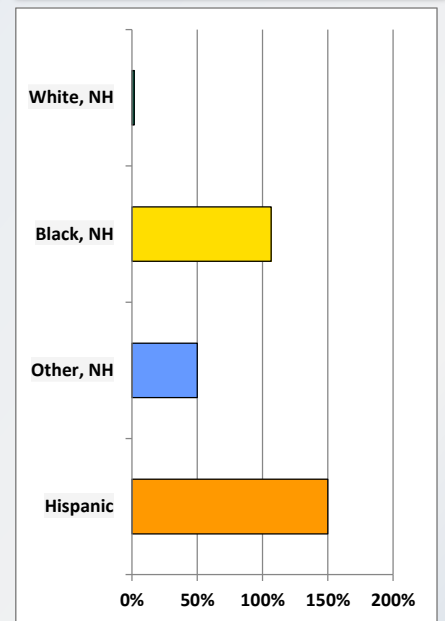
Population by 5-Year Age Cohorts



Pop Change by Age, 2000 to 2010

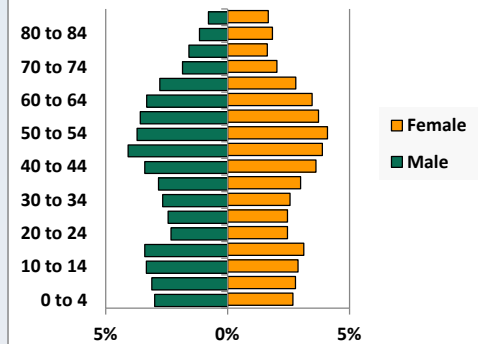


Pop Change by Race/Ethnicity, 2000 to 2010

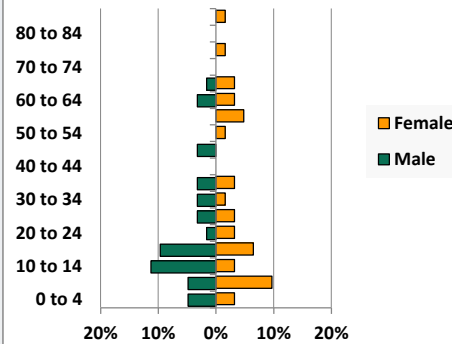


Population by Age, Race and Ethnicity 2010

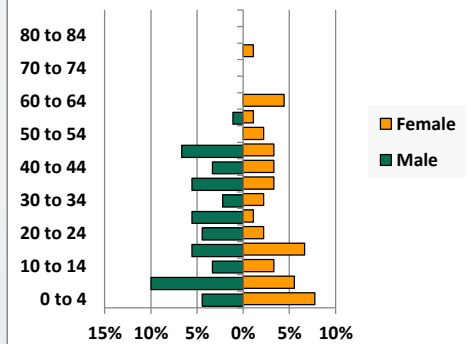
White, Not Hispanic



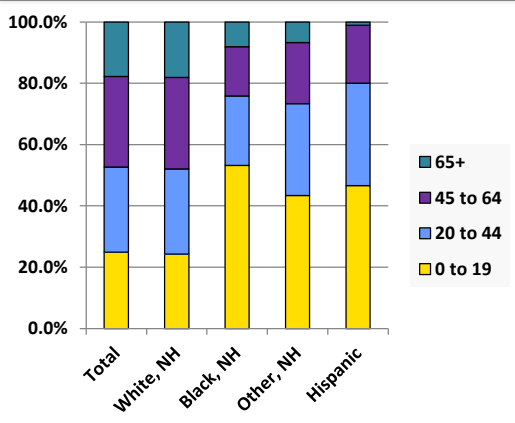
Black, Non-Hispanic



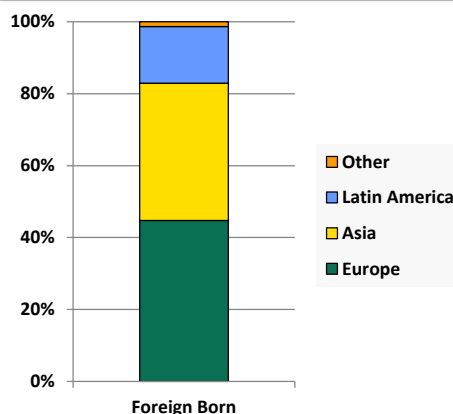
Hispanic



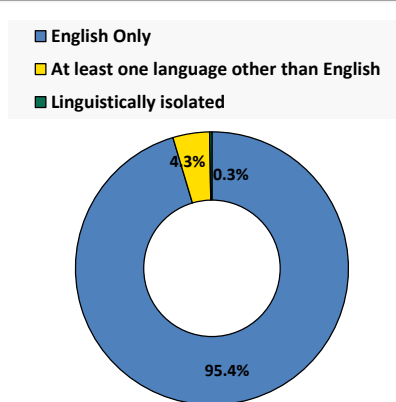
Age by Race and Ethnicity, 2010



Foreign Born, 2010



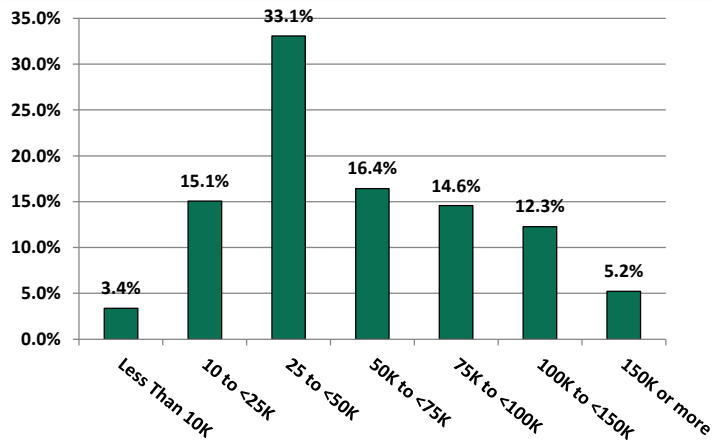
Household Language, 2010



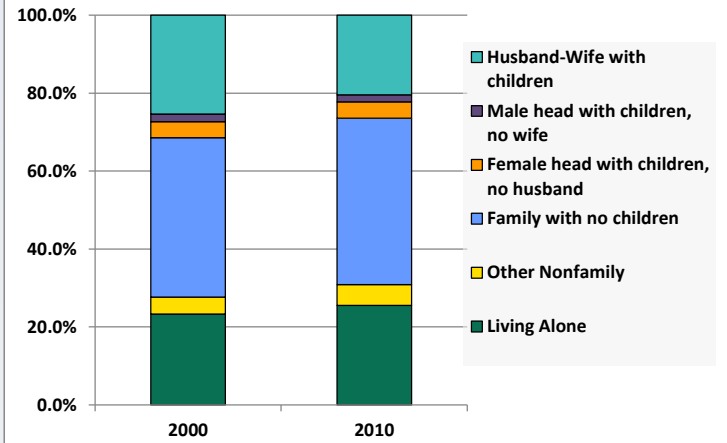
# Demographic Profile

Montgomery House Warrior Run Area Public Library

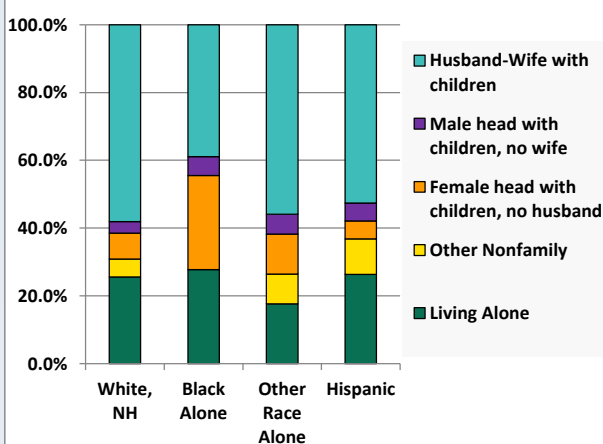
Household Income Distribution, 2008-2012



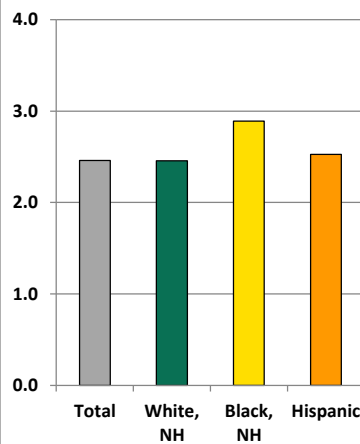
Household Type, 2000 and 2010



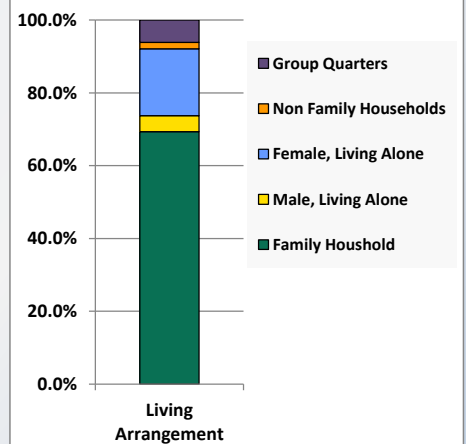
Household Type by Race/Ethnicity, 2010



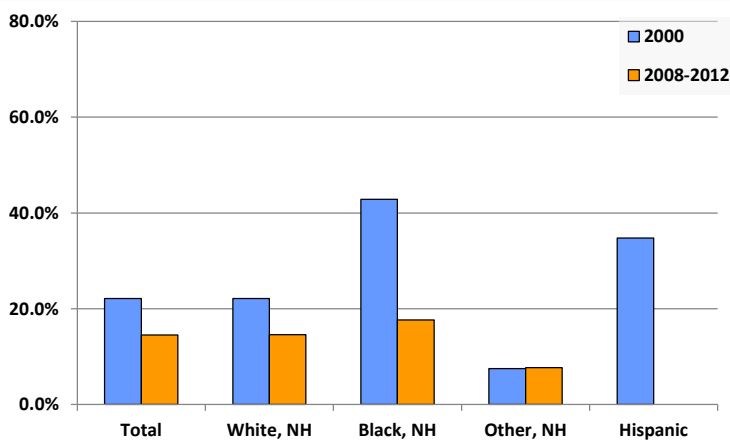
Average Household Size, 2010



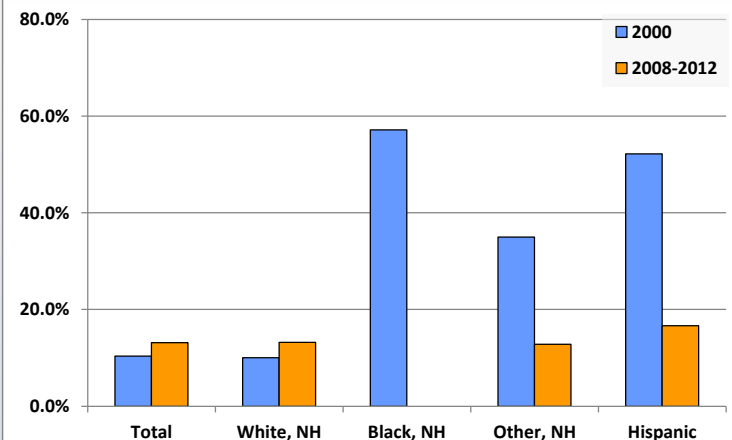
Living Arrangements 65+, 2008-2012



Percent of Adults that Did Not Complete High School



Percent of Adults Who Attained a Bachelor's Degree or Higher



# Reference Data

## Montgomery House Warrior Run Area Public Library

	Total Population	White, Non- Hispanic	Black, Non- Hispanic	Other, Non- Hispanic	Detail for Other, Non-Hispanic					Hispanic or Latino
					AIAN	Asian	NHOPI	Some Other Race	Two or More Races	
A. Total Population										
2000 Total	9,463	9,337	30	60	12	16	3	2	27	36
2000 pct of Total	100.0%	98.7%	0.3%	0.6%	0.1%	0.2%	0.0%	0.0%	0.3%	0.4%
2010 Total	9,739	9,497	62	90	14	36	1	2	37	90
2010 pct of Total	100.0%	97.5%	0.6%	0.9%	0.1%	0.4%	0.0%	0.0%	0.4%	0.9%
B. Population by Major Age Groups by Race and Ethnicity										
2000										
0-19	2,524	2,460	20	25	1	5	0	2	17	19
20-64	5,494	5,437	10	31	11	10	3	0	7	16
65+	1,445	1,440	0	4	0	1	0	0	3	1
85+	154	154	0	0	0	0	0	0	0	0
2010										
0-19	2,422	2,308	33	39	5	8	0	2	24	42
20-64	5,586	5,470	24	45	9	25	1	0	10	47
65+	1,731	1,719	5	6	0	3	0	0	3	1
85+	235	233	1	1	0	0	0	0	1	0
C. Age Mix for Each Racial and Ethnic Group										
2000										
0-19	26.7%	26.3%	66.7%	41.7%	8.3%	31.3%	0.0%	100.0%	63.0%	52.8%
20-64	58.1%	58.2%	33.3%	51.7%	91.7%	62.5%	100.0%	0.0%	25.9%	44.4%
65+	15.3%	15.4%	0.0%	6.7%	0.0%	6.3%	0.0%	0.0%	11.1%	2.8%
85+	1.6%	1.6%	0.0%	0.0%	0.0%	0.0%	0.0%	0.0%	0.0%	0.0%
2010										
0-19	24.9%	24.3%	53.2%	43.3%	35.7%	22.2%	0.0%	100.0%	64.9%	46.7%
20-64	57.4%	57.6%	38.7%	50.0%	64.3%	69.4%	100.0%	0.0%	27.0%	52.2%
65+	17.8%	18.1%	8.1%	6.7%	0.0%	8.3%	0.0%	0.0%	8.1%	1.1%
85+	2.4%	2.5%	1.6%	1.1%	0.0%	0.0%	0.0%	0.0%	2.7%	0.0%
D. Racial and Ethnic Composition of Each Age Group										
2000										
0-19	100.0%	97.5%	0.8%	1.0%	0.0%	0.2%	0.0%	0.1%	0.7%	0.8%
20-64	100.0%	99.0%	0.2%	0.6%	0.2%	0.2%	0.1%	0.0%	0.1%	0.3%
65+	100.0%	99.7%	0.0%	0.3%	0.0%	0.1%	0.0%	0.0%	0.2%	0.1%
85+	100.0%	100.0%	0.0%	0.0%	0.0%	0.0%	0.0%	0.0%	0.0%	0.0%
2010										
0-19	100.0%	95.3%	1.4%	1.6%	0.2%	0.3%	0.0%	0.1%	1.0%	1.7%
20-64	100.0%	97.9%	0.4%	0.8%	0.2%	0.4%	0.0%	0.0%	0.2%	0.8%
65+	100.0%	99.3%	0.3%	0.3%	0.0%	0.2%	0.0%	0.0%	0.2%	0.1%
85+	100.0%	99.1%	0.4%	0.4%	0.0%	0.0%	0.0%	0.0%	0.4%	0.0%
E. Population Growth										
2000-2010, Change										
0-19	-102	-152	13	14	4	3	0	0	7	23
20-64	92	33	14	14	-2	15	-2	0	3	31
65+	286	279	5	2	0	2	0	0	0	0
85+	81	79	1	1	0	0	0	0	1	0
Total	276	160	32	30	2	20	-2	0	10	54
2000-2010, Pct Change										
0-19	-4.0%	-6.2%	65.0%	56.0%	400.0%	60.0%	0.0%	0.0%	41.2%	121.1%
20-64	1.7%	0.6%	140.0%	45.2%	-18.2%	150.0%	-66.7%	0.0%	42.9%	193.8%
65+	19.8%	19.4%	0.0%	50.0%	0.0%	200.0%	0.0%	0.0%	0.0%	0.0%
85+	52.6%	51.3%	0.0%	0.0%	0.0%	0.0%	0.0%	0.0%	0.0%	0.0%
Total	2.9%	1.7%	106.7%	50.0%	16.7%	125.0%	-66.7%	0.0%	37.0%	150.0%

Source: Decennial Census 2010, 2000, American Community Survey 2008-2012

Prepared for the Pennsylvania State Library by The Pennsylvania State Data Center, 9/2014

# Reference Data

## Montgomery House Warrior Run Area Public Library

	Total Population	White, Non- Hispanic	Black, Non- Hispanic	Other, Non- Hispanic	Detail for Other, Non-Hispanic					Hispanic or Latino
					AIAN	Asian	NHOPI	Some Other	Two or More	
								Race	Races	
F. Population by Library-Defined Age Groups, 2010										
0-5	665	626	6	18	2	0	0	2	14	15
6-10	609	580	12	5	0	4	0	0	1	12
11-13	362	347	5	6	2	1	0	0	3	4
14-18	674	645	9	9	1	3	0	0	5	11
19-32	1,356	1,313	9	19	4	11	0	0	4	15
33-45	1,615	1,582	6	10	3	3	0	0	4	17
46-64	2,727	2,685	10	17	2	11	1	0	3	15
65-84	1,496	1,486	4	5	0	3	0	0	2	1
85+	235	233	1	1	0	0	0	0	1	0
Total	9,739	9,497	62	90	14	36	1	2	37	90
G. Population by 5-Year Age Cohorts, 2010										
0-4	570	538	5	16	2	0	0	2	12	11
5-9	590	560	9	7	0	4	0	0	3	14
10-14	613	591	9	7	2	1	0	0	4	6
15-19	649	619	10	9	1	3	0	0	5	11
20-24	466	454	3	3	0	3	0	0	0	6
25-29	482	465	4	7	2	4	0	0	1	6
30-34	513	496	3	10	3	4	0	0	3	4
35-39	569	554	4	3	1	1	0	0	1	8
40-44	676	666	0	4	1	1	0	0	2	6
45-49	770	756	2	3	0	3	0	0	0	9
50-54	749	741	1	5	1	3	1	0	0	2
55-59	703	694	3	4	1	2	0	0	1	2
60-64	658	644	4	6	0	4	0	0	2	4
65-69	538	530	3	5	0	3	0	0	2	0
70-74	367	367	0	0	0	0	0	0	0	0
75-79	307	305	1	0	0	0	0	0	0	1
80-84	284	284	0	0	0	0	0	0	0	0
85-89	159	159	0	0	0	0	0	0	0	0
90-94	56	55	0	1	0	0	0	0	1	0
95-99	20	19	1	0	0	0	0	0	0	0
100+	0	0	0	0	0	0	0	0	0	0
Total	9,739	9,497	62	90	14	36	1	2	37	90

Source: Decennial Census 2010, 2000, American Community Survey 2008-2012

Prepared for the Pennsylvania State Library by The Pennsylvania State Data Center, 9/2014

Page 6

# Reference Data

Montgomery House Warrior Run Area Public Library

## H. Income Distribution, 2008-2012

Range (in thousands)	Households	Pct of Total
<\$10K	123	3.4%
\$10K to <\$25K	548	15.1%
\$25K to <\$50K	1,203	33.1%
\$50K to <\$75K	598	16.4%
\$75K to <\$100K	530	14.6%
\$100K to <\$150K	447	12.3%
\$150K+	190	5.2%

## I. Household Type, 2010

Household Type	2000	2000pct	2010	2010pct
Total Households	3,675	100.0%	3,917	100.0%
Family Households	2,659	72.4%	2,708	69.1%
Husband-wife, no children w/children	931	25.3%	800	20.4%
Female head, no husband, w/ children	152	4.1%	163	4.2%
Male head, no wife, w/ children	72	2.0%	71	1.8%
Without children	1,504	40.9%	1,674	42.7%
Nonfamily households	1,016	27.6%	1,209	30.9%
Living alone	857	23.3%	999	25.5%
Other nonfamily	159	4.3%	210	5.4%

## J. Household Type by Race and Ethnicity, 2008-2012

Household Type	White, NH	Black, NH	Other, NH	Hispanic
Total Households	3,863	18	34	19
Husband wife family	58.1%	38.9%	55.9%	52.6%
Family with male head, no wife	3.3%	5.6%	5.9%	5.3%
family with female head, no husband	7.7%	27.8%	11.8%	5.3%
Living alone	25.6%	27.8%	17.6%	26.3%
Other nonfamily	5.3%	0.0%	8.8%	10.5%

## K. Poverty, 2008-2012

Families	Poverty	PA
All families	7.1%	9.1%
Families w/ related children	13.3%	15.3%
Female householder, no husband present	22.2%	28.8%
Female householder, no husband present, w/ related children	35.9%	39.2%
All people	10.3%	13.1%
Under 18 years	18.5%	18.4%
18 to 64 years	7.3%	12.3%
65 years and over	9.8%	8.4%

## L. Educational Attainment by Race and Ethnicity, 2008-2012

Education Level	White, NH	Black	Other	Hispanic	Total
Population 25 years and over	6,647	51	39	24	6,750
Less than high school	14.6%	17.6%	8%	0.0%	14.5%
High school graduate (includes equivalency)	51.1%	27.5%	44%	12.5%	50.8%
Some college or associates degree	21.1%	54.9%	36%	70.8%	21.5%
Bachelors degree or higher	13.2%	0.0%	13%	16.7%	13.1%

## M. Occupation, 2008-2012

Occupation	Estimate	Percent
Civilian population age 16 years and over	4,853	100.0%
Management, professional, and related occupations	1,159	23.9%
Service occupations	832	17.1%
Sales and office occupations	1,149	23.7%
Farming, fishing, and forestry occupations	108	2.2%
Construction, extraction, maintenance, and repair occupations	564	11.6%
Production, transportation, and material moving occupations	1,041	21.5%

## N. Class of Worker, 2008-2012

Occupation	Estimate	Percent
Civilian population age 16 years and over	4,853	100.0%
Private, for profit, wage and salary employee	3,195	65.8%
Private, not for profit, wage and salary employee	484	10.0%
Private, for profit, wage and salary self-employed in own business	76	1.6%
Government workers	653	13.5%
Self-employed in own not incorporated business	384	7.9%
Unpaid family workers in family business	61	1.3%