

## Demographic Profile Moores Memorial Library

**Population Growth:** The total population of the Moores Memorial Library service area increased by 10.0 percent over the past decade to 4,563; this growth rate was higher than the statewide rate of 3.4 percent.

**Age and Sex:** In 2010, the Moores Memorial Library service area had a total population of 4,563 - 2,222 males (48.7 percent) and 2,341 females (51.3 percent). The age structure of the population in 2010 was as follows: 36.8 percent of the population was under 20 years old, 50.5 percent was 20 to 64 years old and 12.7 percent was 65 years or older.

**Race and Ethnicity:** For people reporting one race alone, not of Hispanic ethnicity, 94.3 percent were White; 1.8 percent were Black or African American; 1.4 percent were Other Race Alone.<sup>1</sup> A total of 117 or 2.6 percent of the population were Hispanic.<sup>2</sup>

**Households:** In 2010, there were 1,341 households in the Moores Memorial Library service area. The average household size was 3.30 people. Families made up 82.5 percent of the households. This figure includes both families with (41.1 percent) and without (41.4 percent) children. Of families with children less than 18 years old, 34.9 percent were married-couple families, 4.4 percent were female householder families with no husband present, and the remaining (1.8 percent) were male-headed households with no wife present.

**Education:** The educational attainment of the population 25 years and over was lower in the Moores Memorial Library service area than in Pennsylvania. During the period 2008-2012, 14.5 percent of residents had earned a Bachelor's degree or higher, compared with 27.0 percent statewide. A total of 706 or 24.6 percent had not completed high school, compared with 11.7 percent for the commonwealth as a whole.

**Income and Poverty:** Households with incomes of \$50,000 to \$74,999 (31.9 percent) made up the largest percent of households in the Moores Memorial Library service area in 2008-2012. For comparison, 18.7 percent of commonwealth households were in this range during the period.

In 2008-2012, the overall poverty rate for the Moores Memorial Library service area was lower than Pennsylvania (10.6 percent compared to 13.1 percent). The poverty rate for the population under 18 years of age was 16.2 percent, compared with 8.5 percent of people 18 to 64 years and 7.5 percent for those aged 65 years and over. A total of 108 or 9.1 percent of all families had incomes below poverty level. In 2008-2012, 13.5 percent of families with related children and 38.2 percent of families with a female householder and no husband with related children present had incomes below the poverty level.

**Class of Worker and Occupation:** In 2008-2012, 77.4 percent of the workforce was private wage and salary workers; 9.7 percent were federal, state, or local government workers; and 11.5 percent were self-employed in their own (not incorporated) business.

The top occupation group for the civilian employed population 16 years and over in the Moores Memorial Library service area in 2008-2012 was Sales and office (28.2 percent).

---

<sup>1</sup> Other race includes those who identified themselves as American Indian/Alaska Native, Asian, Native Hawaiian/Other Pacific Islander, Some Other Race and Two or More Races on the 2010 Census form.

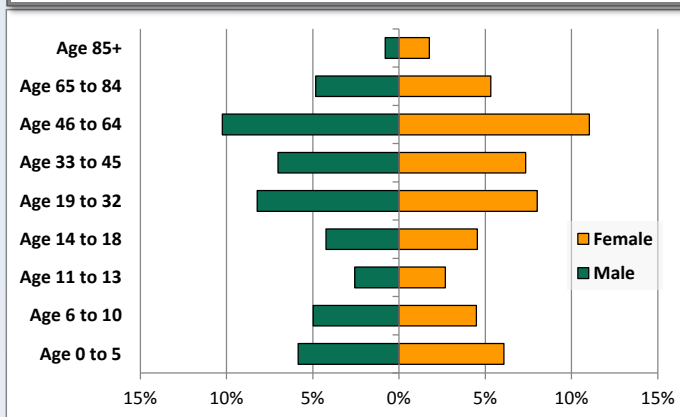
<sup>2</sup> People of Hispanic origin may be of any race.

# Demographic Profile

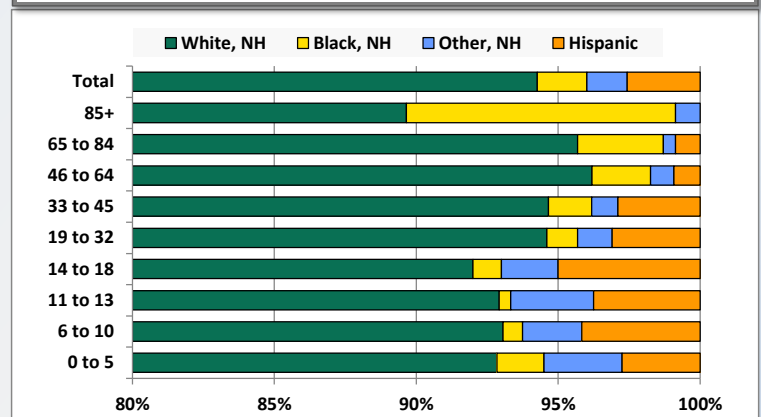
Moore's Memorial Library

Key Indicators		
	2000	2010
<b>Population Growth</b>		
Total Population	4,149	4,563
10-Year Growth	N/A	10.0%
<b>Diversity</b>		
White Alone, Non-Hispanic	97.0%	94.3%
Black Alone, Non-Hispanic	0.7%	1.8%
Other Race Alone, Non-Hispanic	0.9%	1.4%
Percent Hispanic	1.4%	2.6%
<b>Aging</b>		
Percent 65 Years and Over	13.2%	12.7%
<b>Households</b>		
Percent Married Couple with Own Children	35.4%	34.9%
Percent Living Alone	14.8%	14.3%

Population by Library-Defined Age Group, 2010



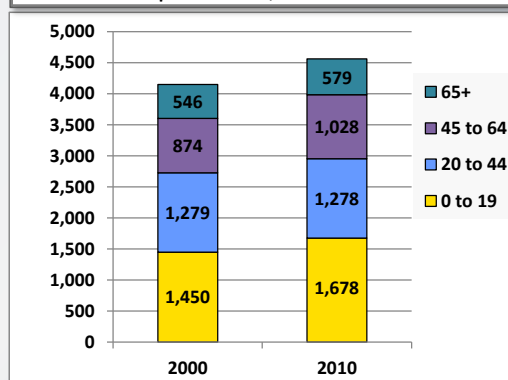
Race/Ethnicity by Library-Defined Age Group, 2010



Population Growth by Library-Defined Age Group, 2000 to 2010

Age Group	2010	Change	
		Numeric	Percent
Total	4,563	414	10.0%
85+	116	17	17.2%
65 to 84	463	16	3.6%
46 to 64	971	153	18.7%
33 to 45	655	-61	-8.5%
19 to 32	741	70	10.4%
14 to 18	400	58	17.0%
11 to 13	240	12	5.3%
6 to 10	432	24	5.9%
0 to 5	545	125	29.8%

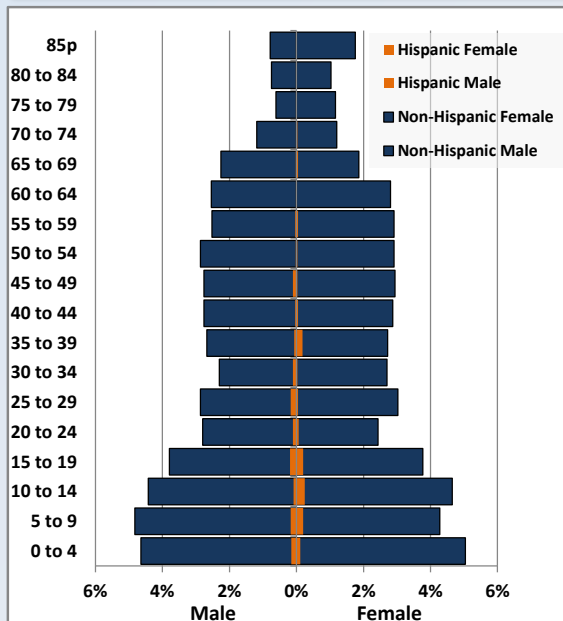
Population Total, 2000 and 2010



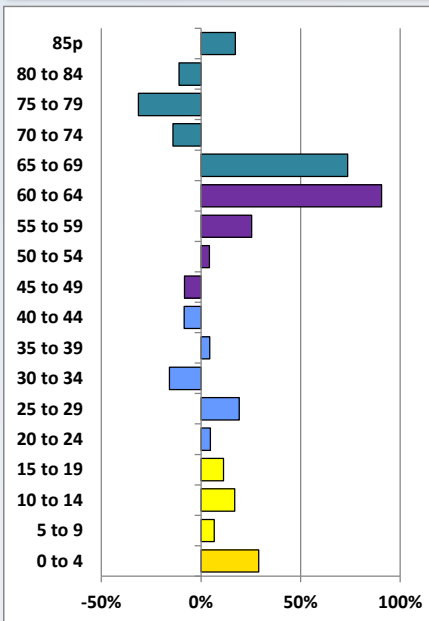
# Demographic Profile

Moore's Memorial Library

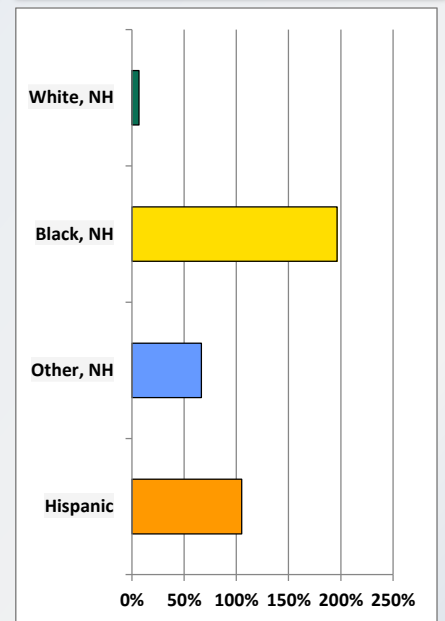
Population by 5-Year Age Cohorts



Pop Change by Age, 2000 to 2010

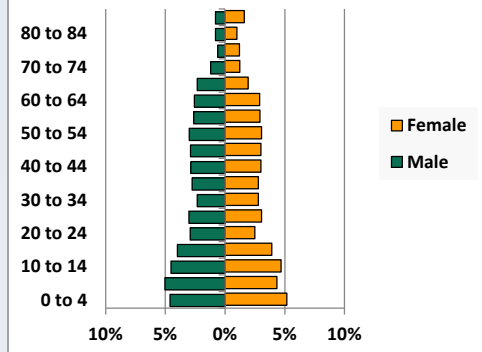


Pop Change by Race/Ethnicity, 2000 to 2010

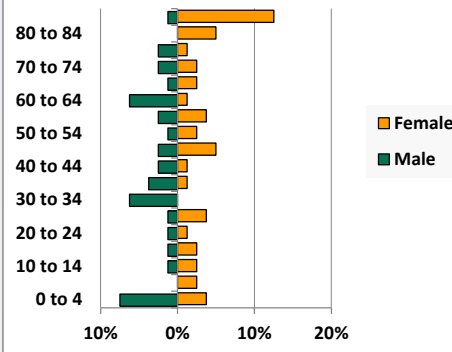


Population by Age, Race and Ethnicity 2010

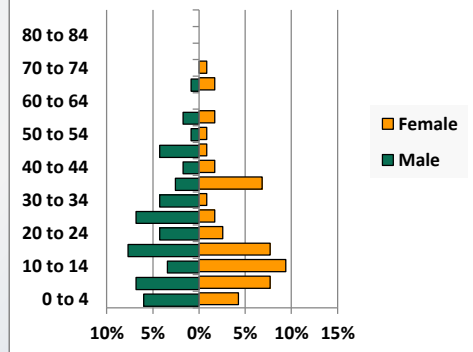
White, Not Hispanic



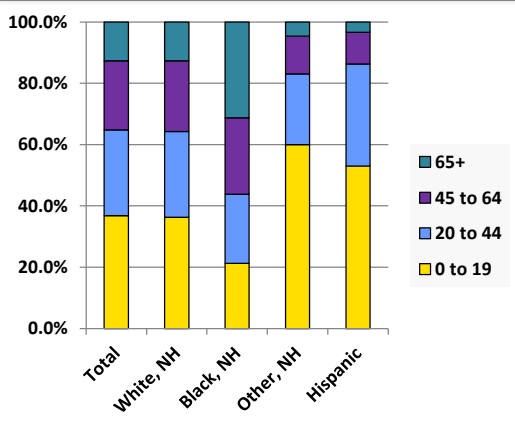
Black, Non-Hispanic



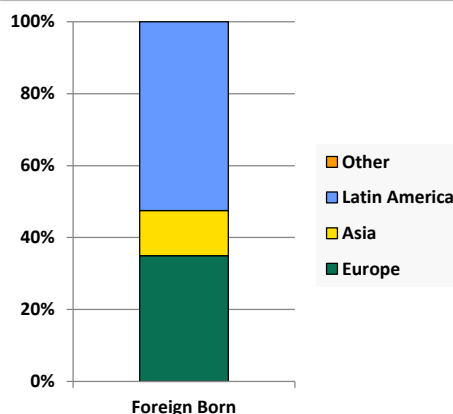
Hispanic



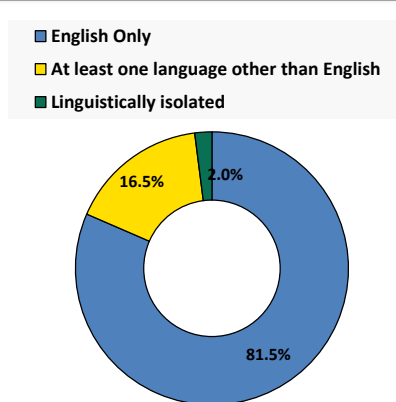
Age by Race and Ethnicity, 2010



Foreign Born, 2010



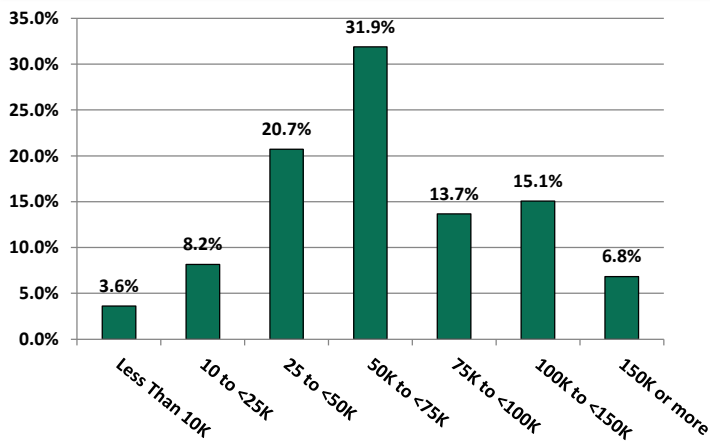
Household Language, 2010



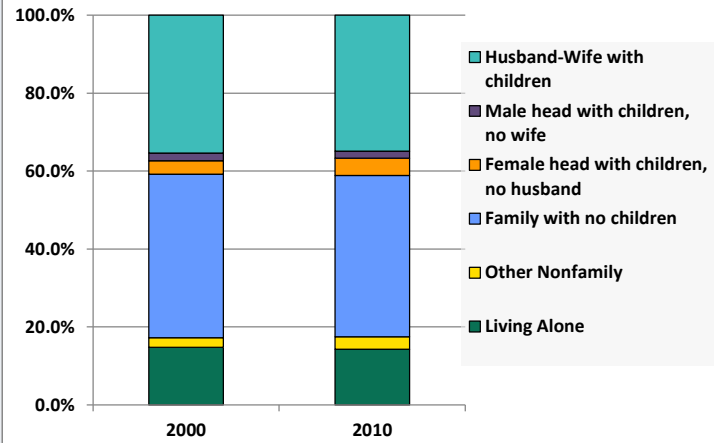
# Demographic Profile

Moore's Memorial Library

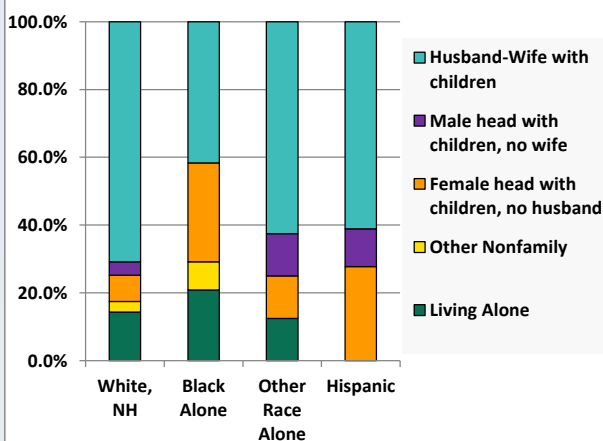
Household Income Distribution, 2008-2012



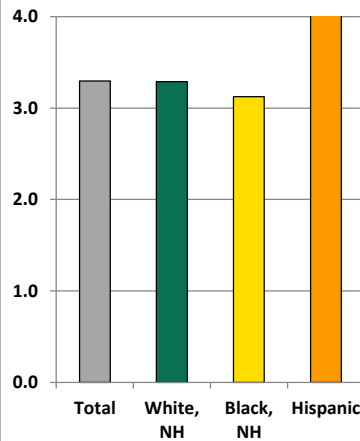
Household Type, 2000 and 2010



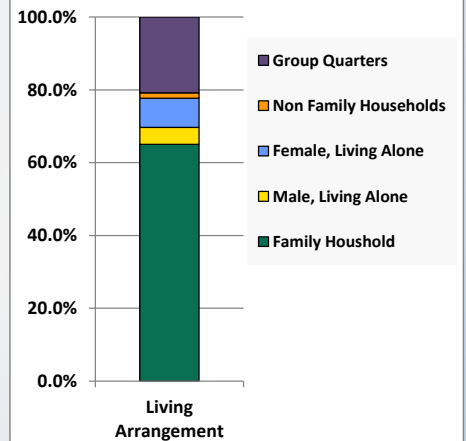
Household Type by Race/Ethnicity, 2010



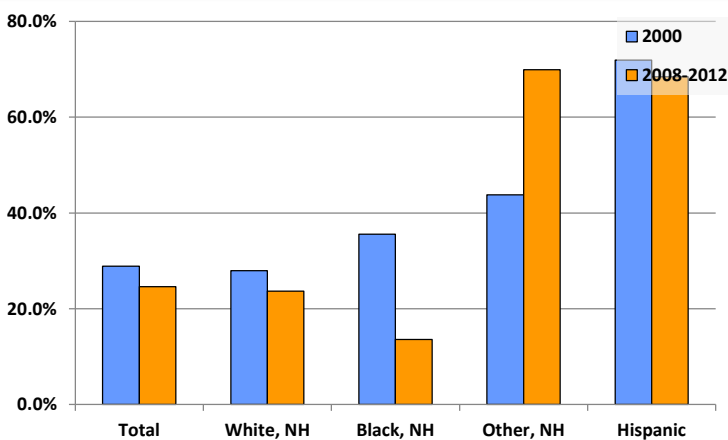
Average Household Size, 2010



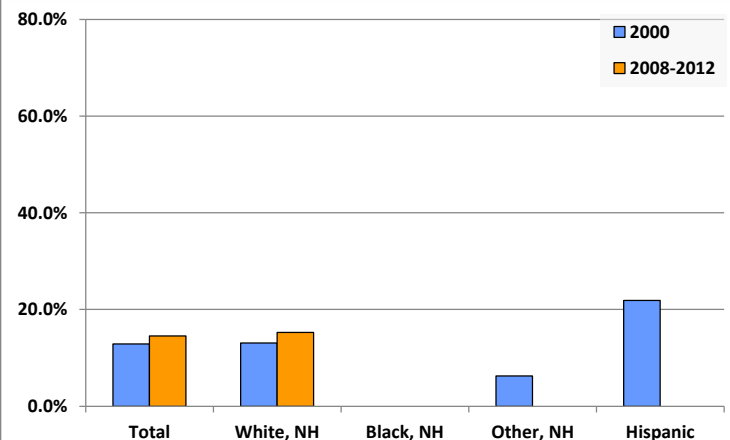
Living Arrangements 65+, 2008-2012



Percent of Adults that Did Not Complete High School



Percent of Adults Who Attained a Bachelor's Degree or Higher



# Reference Data

## Moore's Memorial Library

					Detail for Other, Non-Hispanic					
	Total Population	White, Non- Hispanic	Black, Non- Hispanic	Other, Non- Hispanic	AIAN	Asian	NHOPI	Some Other	Two or More	Hispanic or
								Race	Races	Latino
A. Total Population										
2000 Total	4,149	4,026	27	39	1	10	0	0	28	57
2000 pct of Total	100.0%	97.0%	0.7%	0.9%	0.0%	0.2%	0.0%	0.0%	0.7%	1.4%
2010 Total	4,563	4,301	80	65	2	11	1	0	51	117
2010 pct of Total	100.0%	94.3%	1.8%	1.4%	0.0%	0.2%	0.0%	0.0%	1.1%	2.6%
B. Population by Major Age Groups by Race and Ethnicity										
2000										
0-19	1,450	1,409	2	14	0	3	0	0	11	25
20-64	2,153	2,089	14	20	1	7	0	0	12	30
65+	546	528	11	5	0	0	0	0	5	2
85+	99	96	3	0	0	0	0	0	0	0
2010										
0-19	1,678	1,560	17	39	0	3	0	0	36	62
20-64	2,306	2,194	38	23	1	7	1	0	14	51
65+	579	547	25	3	1	1	0	0	1	4
85+	116	104	11	1	1	0	0	0	0	0
C. Age Mix for Each Racial and Ethnic Group										
2000										
0-19	34.9%	35.0%	7.4%	35.9%	0.0%	30.0%	0.0%	0.0%	39.3%	43.9%
20-64	51.9%	51.9%	51.9%	51.3%	100.0%	70.0%	0.0%	0.0%	42.9%	52.6%
65+	13.2%	13.1%	40.7%	12.8%	0.0%	0.0%	0.0%	0.0%	17.9%	3.5%
85+	2.4%	2.4%	11.1%	0.0%	0.0%	0.0%	0.0%	0.0%	0.0%	0.0%
2010										
0-19	36.8%	36.3%	21.3%	60.0%	0.0%	27.3%	0.0%	0.0%	70.6%	53.0%
20-64	50.5%	51.0%	47.5%	35.4%	50.0%	63.6%	100.0%	0.0%	27.5%	43.6%
65+	12.7%	12.7%	31.3%	4.6%	50.0%	9.1%	0.0%	0.0%	2.0%	3.4%
85+	2.5%	2.4%	13.8%	1.5%	50.0%	0.0%	0.0%	0.0%	0.0%	0.0%
D. Racial and Ethnic Composition of Each Age Group										
2000										
0-19	100.0%	97.2%	0.1%	1.0%	0.0%	0.2%	0.0%	0.0%	0.8%	1.7%
20-64	100.0%	97.0%	0.7%	0.9%	0.0%	0.3%	0.0%	0.0%	0.6%	1.4%
65+	100.0%	96.7%	2.0%	0.9%	0.0%	0.0%	0.0%	0.0%	0.9%	0.4%
85+	100.0%	97.0%	3.0%	0.0%	0.0%	0.0%	0.0%	0.0%	0.0%	0.0%
2010										
0-19	100.0%	93.0%	1.0%	2.3%	0.0%	0.2%	0.0%	0.0%	2.1%	3.7%
20-64	100.0%	95.1%	1.6%	1.0%	0.0%	0.3%	0.0%	0.0%	0.6%	2.2%
65+	100.0%	94.5%	4.3%	0.5%	0.2%	0.2%	0.0%	0.0%	0.2%	0.7%
85+	100.0%	89.7%	9.5%	0.9%	0.9%	0.0%	0.0%	0.0%	0.0%	0.0%
E. Population Growth										
2000-2010, Change										
0-19	228	151	15	25	0	0	0	0	25	37
20-64	153	105	24	3	0	0	1	0	2	21
65+	33	19	14	-2	1	1	0	0	-4	2
85+	17	8	8	1	1	0	0	0	0	0
Total	414	275	53	26	1	1	1	0	23	60
2000-2010, Pct Change										
0-19	15.7%	10.7%	750.0%	178.6%	0.0%	0.0%	0.0%	0.0%	227.3%	148.0%
20-64	7.1%	5.0%	171.4%	15.0%	0.0%	0.0%	0.0%	0.0%	16.7%	70.0%
65+	6.0%	3.6%	127.3%	-40.0%	0.0%	0.0%	0.0%	0.0%	-80.0%	100.0%
85+	17.2%	8.3%	266.7%	0.0%	0.0%	0.0%	0.0%	0.0%	0.0%	0.0%
Total	10.0%	6.8%	196.3%	66.7%	100.0%	10.0%	0.0%	0.0%	82.1%	105.3%

# Reference Data

## Moores Memorial Library

	Total Population	White, Non- Hispanic	Black, Non- Hispanic	Other, Non- Hispanic	Detail for Other, Non-Hispanic					Hispanic or Latino
					AIAN	Asian	NHOPI	Some Other	Two or More	
								Race	Races	
F. Population by Library-Defined Age Groups, 2010										
0-5	545	506	9	15	0	0	0	0	15	15
6-10	432	402	3	9	0	0	0	0	9	18
11-13	240	223	1	7	0	1	0	0	6	9
14-18	400	368	4	8	0	2	0	0	6	20
19-32	741	701	8	9	0	2	0	0	7	23
33-45	655	620	10	6	0	3	1	0	2	19
46-64	971	934	20	8	1	2	0	0	5	9
65-84	463	443	14	2	0	1	0	0	1	4
85+	116	104	11	1	1	0	0	0	0	0
Total	4,563	4,301	80	65	2	11	1	0	51	117
G. Population by 5-Year Age Cohorts, 2010										
0-4	454	421	9	12	0	0	0	0	12	12
5-9	432	403	2	10	0	0	0	0	10	17
10-14	429	397	3	14	0	2	0	0	12	15
15-19	363	339	3	3	0	1	0	0	2	18
20-24	247	233	2	4	0	1	0	0	3	8
25-29	279	262	4	3	0	1	0	0	2	10
30-34	234	220	5	3	0	1	0	0	2	6
35-39	257	239	4	3	0	2	0	0	1	11
40-44	261	252	3	2	0	0	1	0	1	4
45-49	266	253	6	1	0	1	0	0	0	6
50-54	266	260	3	1	0	0	0	0	1	2
55-59	252	239	5	4	1	1	0	0	2	4
60-64	244	236	6	2	0	0	0	0	2	0
65-69	191	183	3	2	0	1	0	0	1	3
70-74	110	105	4	0	0	0	0	0	0	1
75-79	81	78	3	0	0	0	0	0	0	0
80-84	81	77	4	0	0	0	0	0	0	0
85-89	68	64	3	1	1	0	0	0	0	0
90-94	33	27	6	0	0	0	0	0	0	0
95-99	7	6	1	0	0	0	0	0	0	0
100+	8	7	1	0	0	0	0	0	0	0
Total	4,563	4,301	80	65	2	11	1	0	51	117

Source: Decennial Census 2010, 2000, American Community Survey 2008-2012  
Prepared for the Pennsylvania State Library by The Pennsylvania State Data Center, 9/2014

# Reference Data

## Moore's Memorial Library

### H. Income Distribution, 2008-2012

Range (in thousands)	Households	Pct of Total
<\$10K	52	3.6%
\$10K to <\$25K	117	8.2%
\$25K to <\$50K	297	20.7%
\$50K to <\$75K	457	31.9%
\$75K to <\$100K	196	13.7%
\$100K to <\$150K	216	15.1%
\$150K+	98	6.8%

### I. Household Type, 2010

Household Type	2000	2000pct	2010	2010pct
Total Households	1,263	100.0%	1,341	100.0%
Family Households	1,045	82.7%	1,106	82.5%
Husband-wife, no children w/children	447	35.4%	468	34.9%
Female head, no husband, w/ children	43	3.4%	59	4.4%
Male head, no wife, w/ children	25	2.0%	24	1.8%
Without children	530	42.0%	555	41.4%
Nonfamily households	218	17.3%	235	17.5%
Living alone	187	14.8%	192	14.3%
Other nonfamily	31	2.5%	43	3.2%

### J. Household Type by Race and Ethnicity, 2008-2012

Household Type	White, NH	Black, NH	Other, NH	Hispanic
Total Households	1,291	24	16	18
Husband wife family	70.8%	41.7%	62.5%	61.1%
Family with male head, no wife	4.0%	0.0%	12.5%	11.1%
family with female head, no husband	7.7%	29.2%	12.5%	27.8%
Living alone	14.3%	20.8%	12.5%	0.0%
Other nonfamily	3.2%	8.3%	0.0%	0.0%

### K. Poverty, 2008-2012

Families	Poverty	PA
All families	9.1%	9.1%
Families w/ related children	13.5%	15.3%
Female householder, no husband present	33.6%	28.8%
Female householder, no husband present, w/ related children	38.2%	39.2%
All people	10.6%	13.1%
Under 18 years	16.2%	18.4%
18 to 64 years	8.5%	12.3%
65 years and over	7.5%	8.4%

### L. Educational Attainment by Race and Ethnicity, 2008-2012

Education Level	White, NH	Black	Other	Hispanic	Total
Population 25 years and over	2,731	59	73	38	2,868
Less than high school	23.7%	13.6%	70%	68.4%	24.6%
High school graduate (includes equivalency)	40.9%	39.0%	8%	13.2%	40.1%
Some college or associates degree	20.1%	47.5%	22%	18.4%	20.7%
Bachelors degree or higher	15.3%	0.0%	0%	0.0%	14.5%

### M. Occupation, 2008-2012

Occupation	Estimate	Percent
Civilian population age 16 years and over	2,054	100.0%
Management, professional, and related occupations	535	26.0%
Service occupations	337	16.4%
Sales and office occupations	580	28.2%
Farming, fishing, and forestry occupations	56	2.7%
Construction, extraction, maintenance, and repair occupations	263	12.8%
Production, transportation, and material moving occupations	283	13.8%

### N. Class of Worker, 2008-2012

Occupation	Estimate	Percent
Civilian population age 16 years and over	2,054	100.0%
Private, for profit, wage and salary employee	1,371	66.7%
Private, not for profit, wage and salary employee	83	4.0%
Private, for profit, wage and salary self-employed in own business	136	6.6%
Government workers	199	9.7%
Self-employed in own not incorporated business	236	11.5%
Unpaid family workers in family business	29	1.4%