

Demographic Profile Mount Jewett Memorial Library

Population Growth: The total population of the Mount Jewett Memorial Library service area decreased by - 12.5 percent over the past decade to 1,653; this decline rate was lower than the statewide rate of 3.4 percent.

Age and Sex: In 2010, the Mount Jewett Memorial Library service area had a total population of 1,653 - 850 males (51.4 percent) and 803 females (48.6 percent). The age structure of the population in 2010 was as follows: 24.3 percent of the population was under 20 years old, 58.3 percent was 20 to 64 years old and 17.5 percent was 65 years or older.

Race and Ethnicity: For people reporting one race alone, not of Hispanic ethnicity, 98.6 percent were White; .0 percent were Black or African American; .8 percent were Other Race Alone.¹ A total of 9 or .5 percent of the population were Hispanic.²

Households: In 2010, there were 723 households in the Mount Jewett Memorial Library service area. The average household size was 2.29 people. Families made up 63.6 percent of the households. This figure includes both families with (25.0 percent) and without (38.6 percent) children. Of families with children less than 18 years old, 16.0 percent were married-couple families, 5.1 percent were female householder families with no husband present, and the remaining (3.9 percent) were male-headed households with no wife present.

Education: The educational attainment of the population 25 years and over was lower in the Mount Jewett Memorial Library service area than in Pennsylvania. During the period 2008-2012, 15.4 percent of residents had earned a Bachelor's degree or higher, compared with 27.0 percent statewide. A total of 108 or 10.4 percent had not completed high school, compared with 11.7 percent for the commonwealth as a whole.

Income and Poverty: Households with incomes of \$25,000 to \$49,999 (31.8 percent) made up the largest percent of households in the Mount Jewett Memorial Library service area in 2008-2012. For comparison, 24.4 percent of commonwealth households were in this range during the period.

In 2008-2012, the overall poverty rate for the Mount Jewett Memorial Library service area was higher than Pennsylvania (15.4 percent compared to 13.1 percent). The poverty rate for the population under 18 years of age was 34.6 percent, compared with 12.2 percent of people 18 to 64 years and 5.0 percent for those aged 65 years and over. A total of 50 or 11.8 percent of all families had incomes below poverty level. In 2008-2012, 27.1 percent of families with related children and 81.3 percent of families with a female householder and no husband with related children present had incomes below the poverty level.

Class of Worker and Occupation: In 2008-2012, 74.3 percent of the workforce was private wage and salary workers; 19.5 percent were federal, state, or local government workers; and 5.5 percent were self-employed in their own (not incorporated) business.

The top occupation group for the civilian employed population 16 years and over in the Mount Jewett Memorial Library service area in 2008-2012 was Management, business, science, and arts (28.9 percent).

¹ Other race includes those who identified themselves as American Indian/Alaska Native, Asian, Native Hawaiian/Other Pacific Islander, Some Other Race and Two or More Races on the 2010 Census form.

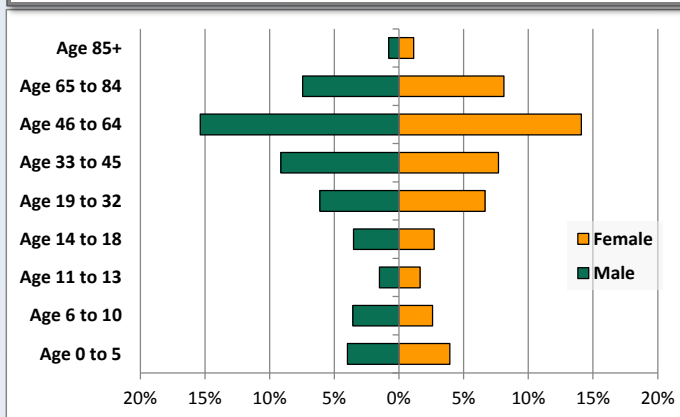
² People of Hispanic origin may be of any race.

Demographic Profile

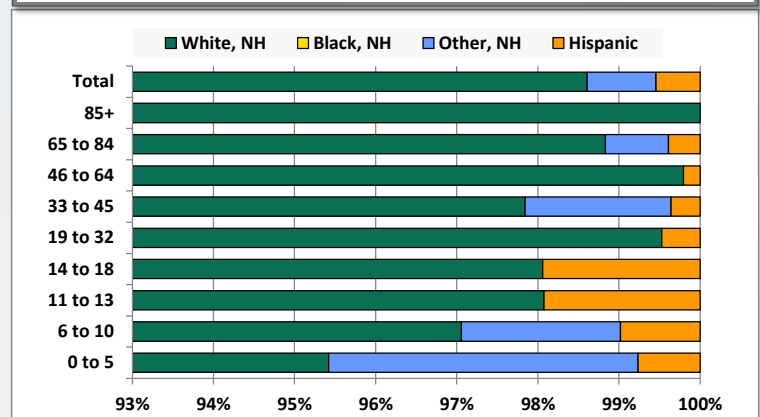
Mount Jewett Memorial Library

Key Indicators		
	2000	2010
Population Growth		
Total Population	1,889	1,653
10-Year Growth	N/A	-12.5%
Diversity		
White Alone, Non-Hispanic	99.4%	98.6%
Black Alone, Non-Hispanic	0.0%	0.0%
Other Race Alone, Non-Hispanic	0.4%	0.8%
Percent Hispanic	0.2%	0.5%
Aging		
Percent 65 Years and Over	14.8%	17.5%
Households		
Percent Married Couple with Own Children	21.3%	16.0%
Percent Living Alone	27.0%	30.0%

Population by Library-Defined Age Group, 2010



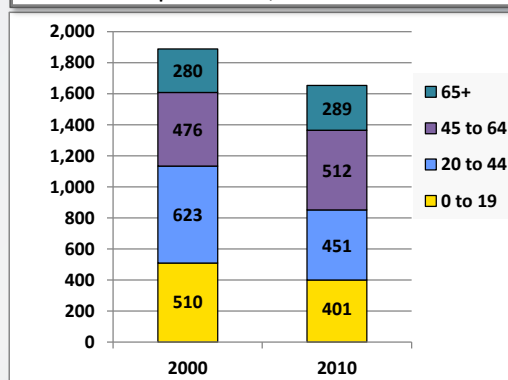
Race/Ethnicity by Library-Defined Age Group, 2010



Population Growth by Library-Defined Age Group, 2000 to 2010

Age Group	2010	Change	
		Numeric	Percent
Total	1,653	-236	-12.5%
85+	32	5	18.5%
65 to 84	257	4	1.6%
46 to 64	487	45	10.2%
33 to 45	278	-69	-19.9%
19 to 32	211	-119	-36.1%
14 to 18	103	-40	-28.0%
11 to 13	52	-6	-10.3%
6 to 10	102	-25	-19.7%
0 to 5	131	-31	-19.1%

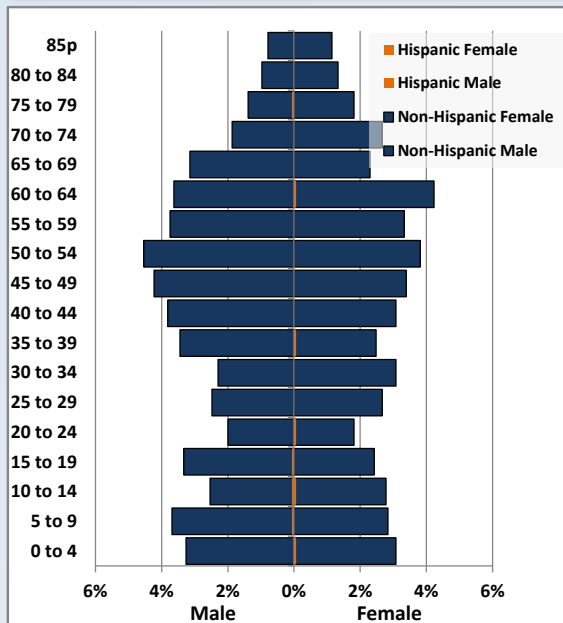
Population Total, 2000 and 2010



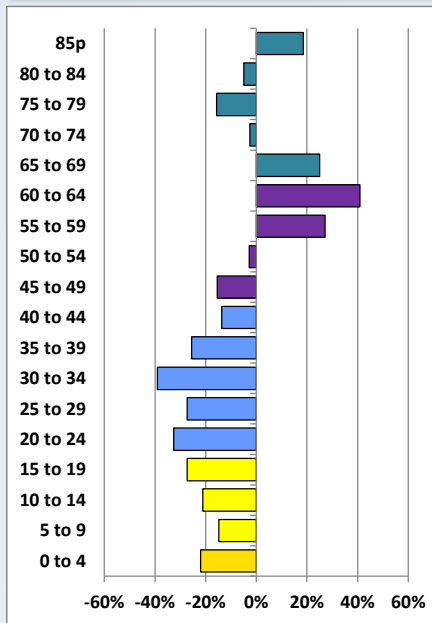
Demographic Profile

Mount Jewett Memorial Library

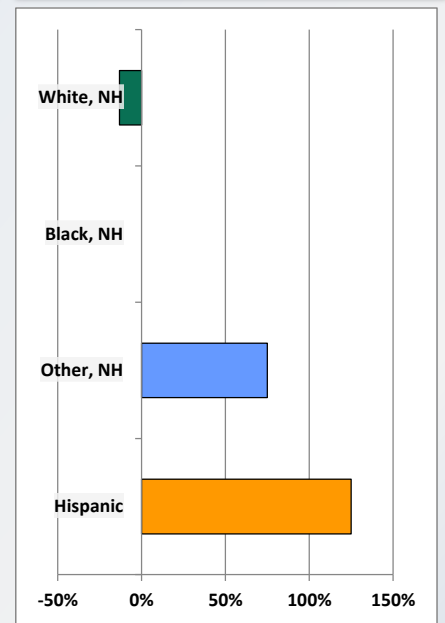
Population by 5-Year Age Cohorts



Pop Change by Age, 2000 to 2010

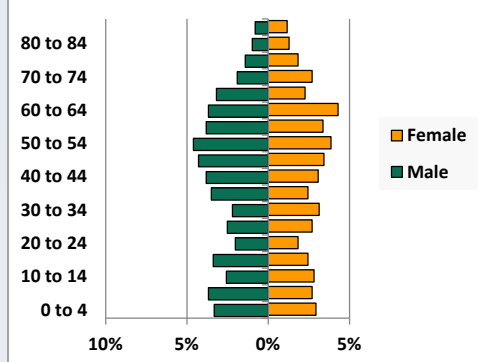


Pop Change by Race/Ethnicity, 2000 to 2010

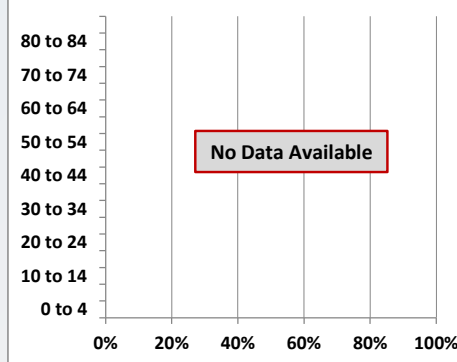


Population by Age, Race and Ethnicity 2010

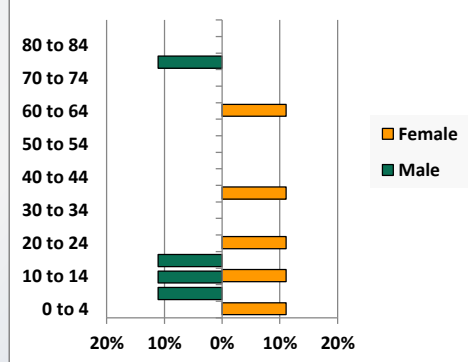
White, Not Hispanic



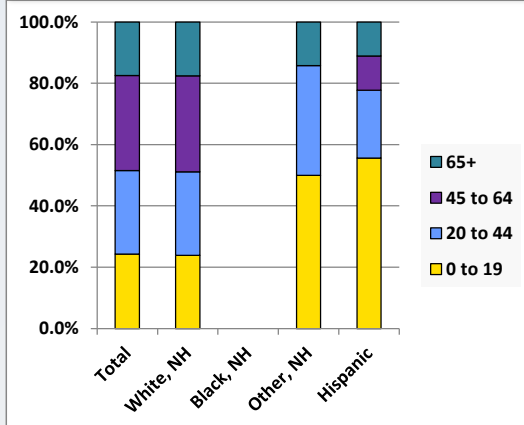
Black, Non-Hispanic



Hispanic



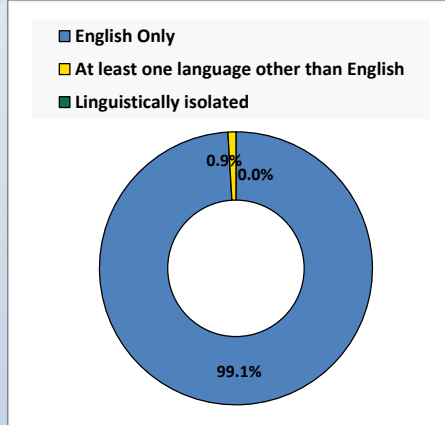
Age by Race and Ethnicity, 2010



Foreign Born, 2010



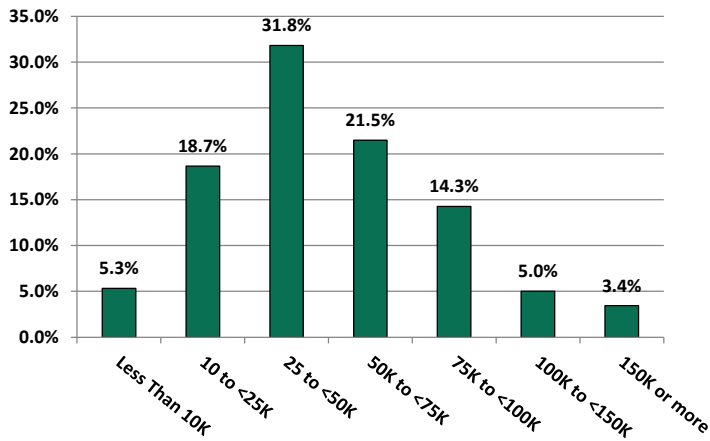
Household Language, 2010



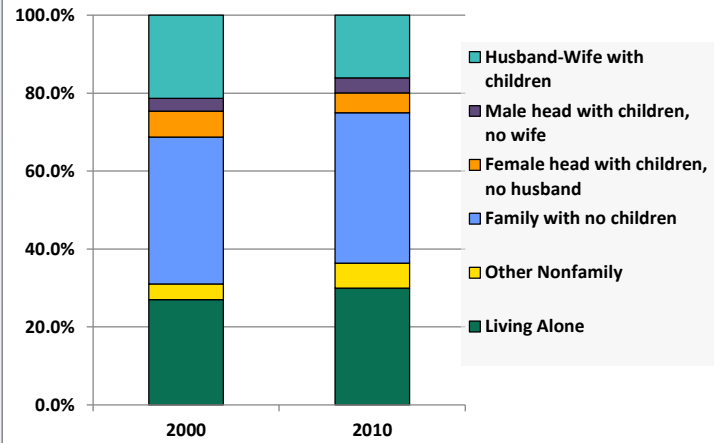
Demographic Profile

Mount Jewett Memorial Library

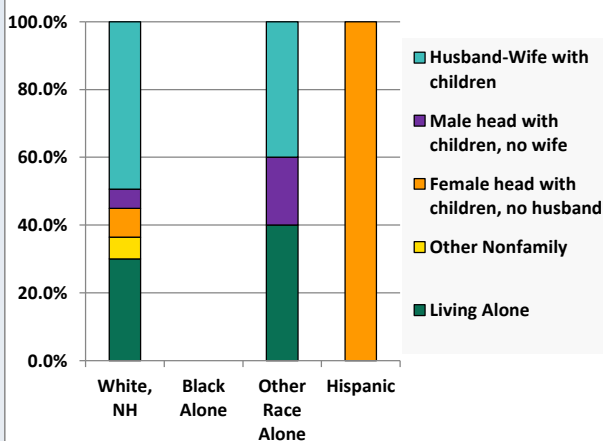
Household Income Distribution, 2008-2012



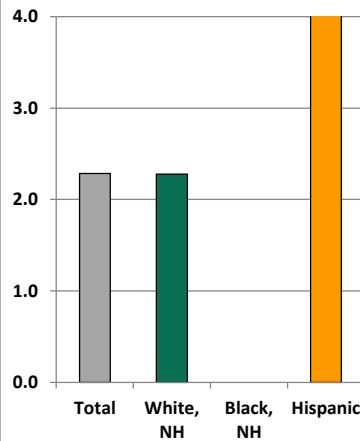
Household Type, 2000 and 2010



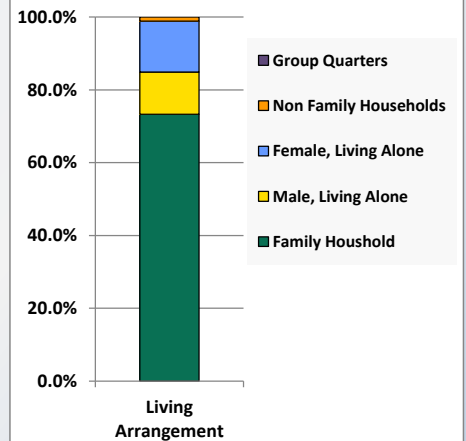
Household Type by Race/Ethnicity, 2010



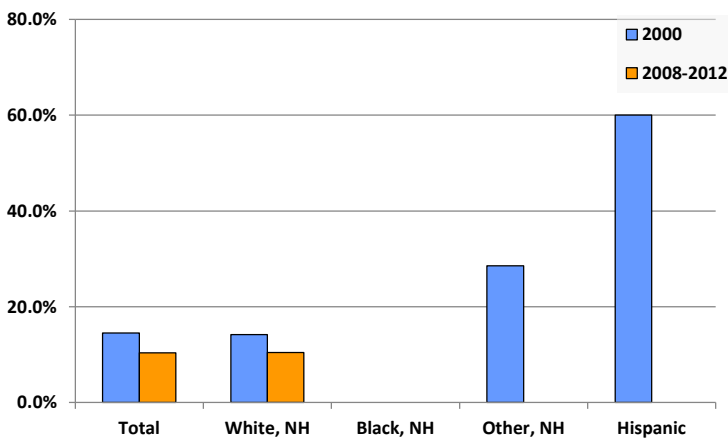
Average Household Size, 2010



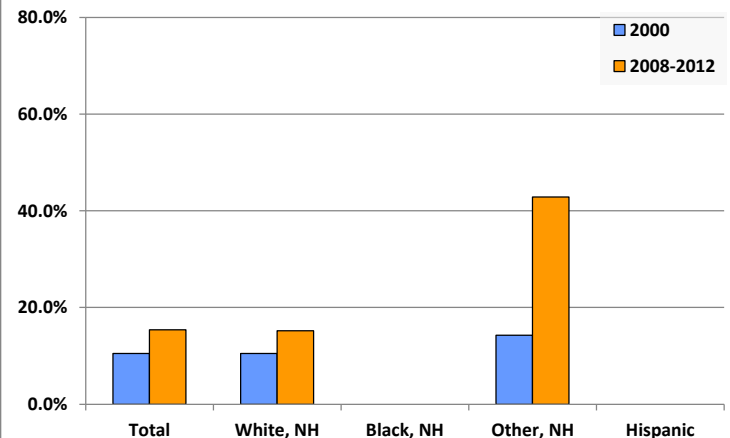
Living Arrangements 65+, 2008-2012



Percent of Adults that Did Not Complete High School



Percent of Adults Who Attained a Bachelor's Degree or Higher



Reference Data

Mount Jewett Memorial Library

					Detail for Other, Non-Hispanic					
	Total Population	White, Non- Hispanic	Black, Non- Hispanic	Other, Non- Hispanic	AIAN	Asian	NHOPI	Some Other	Two or More	Hispanic or
								Race	Races	Latino
A. Total Population										
2000 Total	1,889	1,877	0	8	3	3	0	0	2	4
2000 pct of Total	100.0%	99.4%	0.0%	0.4%	0.2%	0.2%	0.0%	0.0%	0.1%	0.2%
2010 Total	1,653	1,630	0	14	3	2	0	0	9	9
2010 pct of Total	100.0%	98.6%	0.0%	0.8%	0.2%	0.1%	0.0%	0.0%	0.5%	0.5%
B. Population by Major Age Groups by Race and Ethnicity										
2000										
0-19	510	509	0	1	1	0	0	0	0	0
20-64	1,099	1,090	0	6	2	3	0	0	1	3
65+	280	278	0	1	0	0	0	0	1	1
85+	27	27	0	0	0	0	0	0	0	0
2010										
0-19	401	389	0	7	0	1	0	0	6	5
20-64	963	955	0	5	1	1	0	0	3	3
65+	289	286	0	2	2	0	0	0	0	1
85+	32	32	0	0	0	0	0	0	0	0
C. Age Mix for Each Racial and Ethnic Group										
2000										
0-19	27.0%	27.1%	0.0%	12.5%	33.3%	0.0%	0.0%	0.0%	0.0%	0.0%
20-64	58.2%	58.1%	0.0%	75.0%	66.7%	100.0%	0.0%	0.0%	50.0%	75.0%
65+	14.8%	14.8%	0.0%	12.5%	0.0%	0.0%	0.0%	0.0%	50.0%	25.0%
85+	1.4%	1.4%	0.0%	0.0%	0.0%	0.0%	0.0%	0.0%	0.0%	0.0%
2010										
0-19	24.3%	23.9%	0.0%	50.0%	0.0%	50.0%	0.0%	0.0%	66.7%	55.6%
20-64	58.3%	58.6%	0.0%	35.7%	33.3%	50.0%	0.0%	0.0%	33.3%	33.3%
65+	17.5%	17.5%	0.0%	14.3%	66.7%	0.0%	0.0%	0.0%	0.0%	11.1%
85+	1.9%	2.0%	0.0%	0.0%	0.0%	0.0%	0.0%	0.0%	0.0%	0.0%
D. Racial and Ethnic Composition of Each Age Group										
2000										
0-19	100.0%	99.8%	0.0%	0.2%	0.2%	0.0%	0.0%	0.0%	0.0%	0.0%
20-64	100.0%	99.2%	0.0%	0.5%	0.2%	0.3%	0.0%	0.0%	0.1%	0.3%
65+	100.0%	99.3%	0.0%	0.4%	0.0%	0.0%	0.0%	0.0%	0.4%	0.4%
85+	100.0%	100.0%	0.0%	0.0%	0.0%	0.0%	0.0%	0.0%	0.0%	0.0%
2010										
0-19	100.0%	97.0%	0.0%	1.7%	0.0%	0.2%	0.0%	0.0%	1.5%	1.2%
20-64	100.0%	99.2%	0.0%	0.5%	0.1%	0.1%	0.0%	0.0%	0.3%	0.3%
65+	100.0%	99.0%	0.0%	0.7%	0.7%	0.0%	0.0%	0.0%	0.0%	0.3%
85+	100.0%	100.0%	0.0%	0.0%	0.0%	0.0%	0.0%	0.0%	0.0%	0.0%
E. Population Growth										
2000-2010, Change										
0-19	-109	-120	0	6	-1	1	0	0	6	5
20-64	-136	-135	0	-1	-1	-2	0	0	2	0
65+	9	8	0	1	2	0	0	0	-1	0
85+	5	5	0	0	0	0	0	0	0	0
Total	-236	-247	0	6	0	-1	0	0	7	5
2000-2010, Pct Change										
0-19	-21.4%	-23.6%	0.0%	600.0%	-100.0%	0.0%	0.0%	0.0%	0.0%	0.0%
20-64	-12.4%	-12.4%	0.0%	-16.7%	-50.0%	-66.7%	0.0%	0.0%	200.0%	0.0%
65+	3.2%	2.9%	0.0%	100.0%	0.0%	0.0%	0.0%	0.0%	-100.0%	0.0%
85+	18.5%	18.5%	0.0%	0.0%	0.0%	0.0%	0.0%	0.0%	0.0%	0.0%
Total	-12.5%	-13.2%	0.0%	75.0%	0.0%	-33.3%	0.0%	0.0%	350.0%	125.0%

Source: Decennial Census 2010, 2000, American Community Survey 2008-2012

Prepared for the Pennsylvania State Library by The Pennsylvania State Data Center, 9/2014

Reference Data

Mount Jewett Memorial Library

	Total Population	White, Non- Hispanic	Black, Non- Hispanic	Other, Non- Hispanic	Detail for Other, Non-Hispanic					Hispanic or Latino
					AIAN	Asian	NHOPI	Some Other	Two or More	
								Race	Races	
F. Population by Library-Defined Age Groups, 2010										
0-5	131	125	0	5	0	1	0	0	4	1
6-10	102	99	0	2	0	0	0	0	2	1
11-13	52	51	0	0	0	0	0	0	0	1
14-18	103	101	0	0	0	0	0	0	0	2
19-32	211	210	0	0	0	0	0	0	0	1
33-45	278	272	0	5	1	1	0	0	3	1
46-64	487	486	0	0	0	0	0	0	0	1
65-84	257	254	0	2	2	0	0	0	0	1
85+	32	32	0	0	0	0	0	0	0	0
Total	1,653	1,630	0	14	3	2	0	0	9	9
G. Population by 5-Year Age Cohorts, 2010										
0-4	106	102	0	3	0	0	0	0	3	1
5-9	109	104	0	4	0	1	0	0	3	1
10-14	90	88	0	0	0	0	0	0	0	2
15-19	96	95	0	0	0	0	0	0	0	1
20-24	64	63	0	0	0	0	0	0	0	1
25-29	85	85	0	0	0	0	0	0	0	0
30-34	89	87	0	2	0	0	0	0	2	0
35-39	99	97	0	1	0	0	0	0	1	1
40-44	114	112	0	2	1	1	0	0	0	0
45-49	126	126	0	0	0	0	0	0	0	0
50-54	138	138	0	0	0	0	0	0	0	0
55-59	117	117	0	0	0	0	0	0	0	0
60-64	131	130	0	0	0	0	0	0	0	1
65-69	90	89	0	1	1	0	0	0	0	0
70-74	75	75	0	0	0	0	0	0	0	0
75-79	54	53	0	0	0	0	0	0	0	1
80-84	38	37	0	1	1	0	0	0	0	0
85-89	27	27	0	0	0	0	0	0	0	0
90-94	3	3	0	0	0	0	0	0	0	0
95-99	1	1	0	0	0	0	0	0	0	0
100+	1	1	0	0	0	0	0	0	0	0
Total	1,653	1,630	0	14	3	2	0	0	9	9

Source: Decennial Census 2010, 2000, American Community Survey 2008-2012

Prepared for the Pennsylvania State Library by The Pennsylvania State Data Center, 9/2014

Reference Data

Mount Jewett Memorial Library

H. Income Distribution, 2008-2012

Range (in thousands)	Households	Pct of Total
<\$10K	34	5.3%
\$10K to <\$25K	119	18.7%
\$25K to <\$50K	203	31.8%
\$50K to <\$75K	137	21.5%
\$75K to <\$100K	91	14.3%
\$100K to <\$150K	32	5.0%
\$150K+	22	3.4%

I. Household Type, 2010

Household Type	2000	2000pct	2010	2010pct
Total Households	793	100.0%	723	100.0%
Family Households	547	69.0%	460	63.6%
Husband-wife, no children w/children	169	21.3%	116	16.0%
Female head, no husband, w/ children	53	6.7%	37	5.1%
Male head, no wife, w/ children	26	3.3%	28	3.9%
Without children	299	37.7%	279	38.6%
Nonfamily households	246	31.0%	263	36.4%
Living alone	214	27.0%	217	30.0%
Other nonfamily	32	4.0%	46	6.4%

J. Household Type by Race and Ethnicity, 2008-2012

Household Type	White, NH	Black, NH	Other, NH	Hispanic
Total Households	717	0	5	1
Husband wife family	49.4%	0.0%	40.0%	0.0%
Family with male head, no wife	5.7%	0.0%	20.0%	0.0%
family with female head, no husband	8.5%	0.0%	0.0%	100.0%
Living alone	30.0%	0.0%	40.0%	0.0%
Other nonfamily	6.4%	0.0%	0.0%	0.0%

K. Poverty, 2008-2012

Families	Poverty	PA
All families	11.8%	9.1%
Families w/ related children	27.1%	15.3%
Female householder, no husband present	39.4%	28.8%
Female householder, no husband present, w/ related children	81.3%	39.2%
All people	15.4%	13.1%
Under 18 years	34.6%	18.4%
18 to 64 years	12.2%	12.3%
65 years and over	5.0%	8.4%

L. Educational Attainment by Race and Ethnicity, 2008-2012

Education Level	White, NH	Black	Other	Hispanic	Total
Population 25 years and over	1,032	0	7	0	1,039
Less than high school	10.5%	0.0%	0%	0.0%	10.4%
High school graduate (includes equivalency	46.2%	0.0%	57%	0.0%	46.3%
Some college or associates degree	28.1%	0.0%	0%	0.0%	27.9%
Bachelors degree or higher	15.2%	0.0%	43%	0.0%	15.4%

M. Occupation, 2008-2012

Occupation	Estimate	Percent
Civilian population age 16 years and over	668	100.0%
Management, professional, and related occupations	193	28.9%
Service occupations	129	19.3%
Sales and office occupations	127	19.0%
Farming, fishing, and forestry occupations	8	1.2%
Construction, extraction, maintenance, and repair occupations	110	16.5%
Production, transportation, and material moving occupations	101	15.1%

N. Class of Worker, 2008-2012

Occupation	Estimate	Percent
Civilian population age 16 years and over	668	100.0%
Private, for profit, wage and salary employee	400	59.9%
Private, not for profit, wage and salary employee	74	11.1%
Private, for profit, wage and salary self-employed in own business	22	3.3%
Government workers	130	19.5%
Self-employed in own not incorporated business	37	5.5%
Unpaid family workers in family business	5	0.7%