

## Demographic Profile Muncy Public Library

**Population Growth:** The total population of the Muncy Public Library service area decreased by -2.3 percent over the past decade to 7,040; this decline rate was lower than the statewide rate of 3.4 percent.

**Age and Sex:** In 2010, the Muncy Public Library service area had a total population of 7,040 - 3,373 males (47.9 percent) and 3,667 females (52.1 percent). The age structure of the population in 2010 was as follows: 23.9 percent of the population was under 20 years old, 56.9 percent was 20 to 64 years old and 19.2 percent was 65 years or older.

**Race and Ethnicity:** For people reporting one race alone, not of Hispanic ethnicity, 96.8 percent were White; .2 percent were Black or African American; 1.6 percent were Other Race Alone.<sup>1</sup> A total of 92 or 1.3 percent of the population were Hispanic.<sup>2</sup>

**Households:** In 2010, there were 2,892 households in the Muncy Public Library service area. The average household size was 2.38 people. Families made up 67.9 percent of the households. This figure includes both families with (25.9 percent) and without (41.9 percent) children. Of families with children less than 18 years old, 17.9 percent were married-couple families, 5.4 percent were female householder families with no husband present, and the remaining (2.6 percent) were male-headed households with no wife present.

**Education:** The educational attainment of the population 25 years and over was lower in the Muncy Public Library service area than in Pennsylvania. During the period 2008-2012, 19.8 percent of residents had earned a Bachelor's degree or higher, compared with 27.0 percent statewide. A total of 674 or 12.8 percent had not completed high school, compared with 11.7 percent for the commonwealth as a whole.

**Income and Poverty:** Households with incomes of \$25,000 to \$49,999 (32.4 percent) made up the largest percent of households in the Muncy Public Library service area in 2008-2012. For comparison, 24.4 percent of commonwealth households were in this range during the period.

In 2008-2012, the overall poverty rate for the Muncy Public Library service area was lower than Pennsylvania (8.2 percent compared to 13.1 percent). The poverty rate for the population under 18 years of age was 11.2 percent, compared with 7.1 percent of people 18 to 64 years and 8.8 percent for those aged 65 years and over. A total of 119 or 6.2 percent of all families had incomes below poverty level. In 2008-2012, 8.9 percent of families with related children and 40.8 percent of families with a female householder and no husband with related children present had incomes below the poverty level.

**Class of Worker and Occupation:** In 2008-2012, 87.2 percent of the workforce was private wage and salary workers; 9.6 percent were federal, state, or local government workers; and 3.2 percent were self-employed in their own (not incorporated) business.

The top occupation group for the civilian employed population 16 years and over in the Muncy Public Library service area in 2008-2012 was Sales and office (28.6 percent).

---

<sup>1</sup> Other race includes those who identified themselves as American Indian/Alaska Native, Asian, Native Hawaiian/Other Pacific Islander, Some Other Race and Two or More Races on the 2010 Census form.

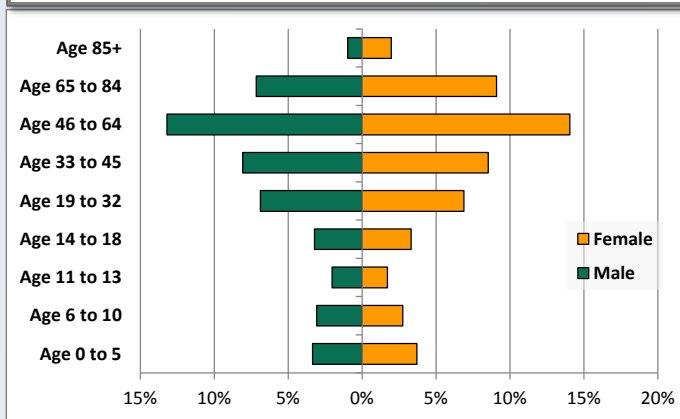
<sup>2</sup> People of Hispanic origin may be of any race.

# Demographic Profile

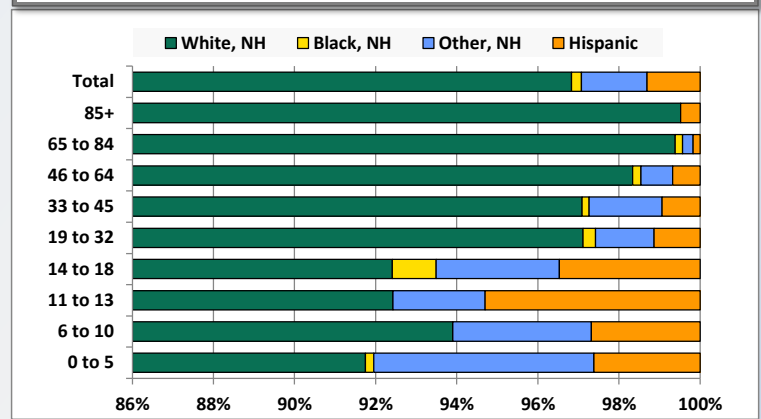
Muncy Public Library

Key Indicators		
	2000	2010
<b>Population Growth</b>		
Total Population	7,209	7,040
10-Year Growth	N/A	-2.3%
<b>Diversity</b>		
White Alone, Non-Hispanic	98.1%	96.8%
Black Alone, Non-Hispanic	0.1%	0.2%
Other Race Alone, Non-Hispanic	1.2%	1.6%
Percent Hispanic	0.6%	1.3%
<b>Aging</b>		
Percent 65 Years and Over	18.0%	19.2%
<b>Households</b>		
Percent Married Couple with Own Children	22.2%	17.9%
Percent Living Alone	24.4%	26.0%

Population by Library-Defined Age Group, 2010



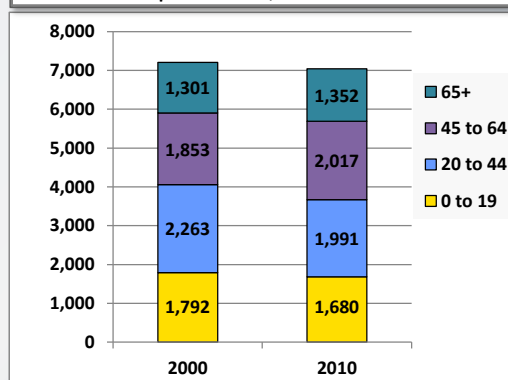
Race/Ethnicity by Library-Defined Age Group, 2010



Population Growth by Library-Defined Age Group, 2000 to 2010

Age Group	2010	Change	
		Numeric	Percent
Total	7,040	-169	-2.3%
85+	208	20	10.6%
65 to 84	1,144	31	2.8%
46 to 64	1,919	184	10.6%
33 to 45	1,168	-179	-13.3%
19 to 32	969	-143	-12.9%
14 to 18	461	-34	-6.9%
11 to 13	264	-10	-3.6%
6 to 10	410	-51	-11.1%
0 to 5	497	13	2.7%

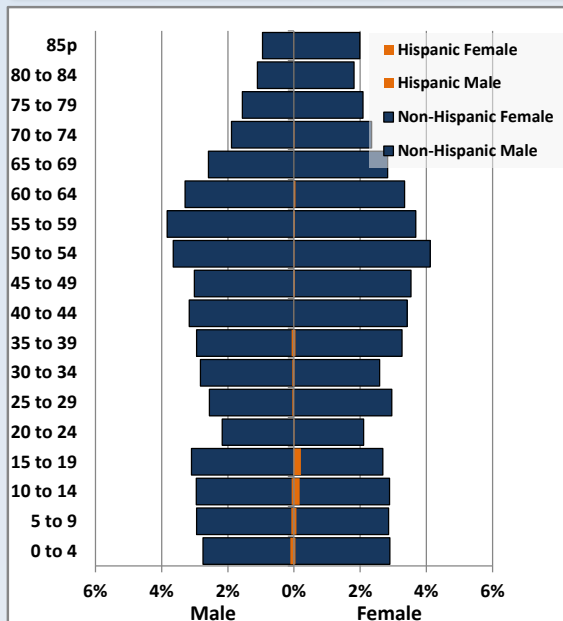
Population Total, 2000 and 2010



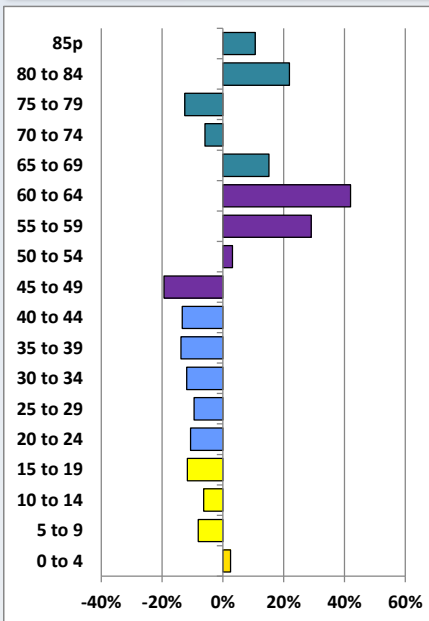
# Demographic Profile

Muncy Public Library

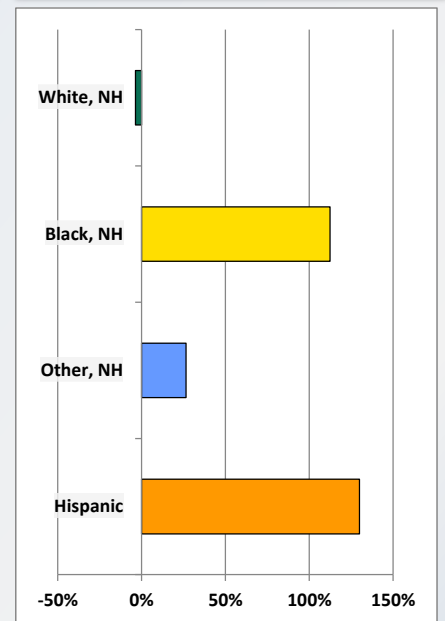
Population by 5-Year Age Cohorts



Pop Change by Age, 2000 to 2010

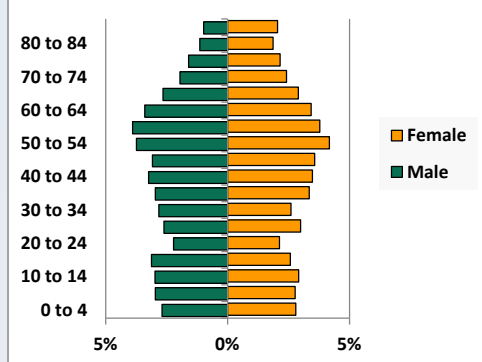


Pop Change by Race/Ethnicity, 2000 to 2010

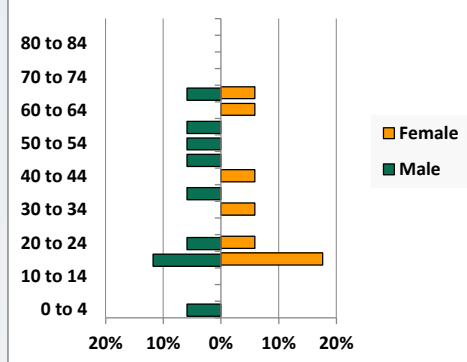


Population by Age, Race and Ethnicity 2010

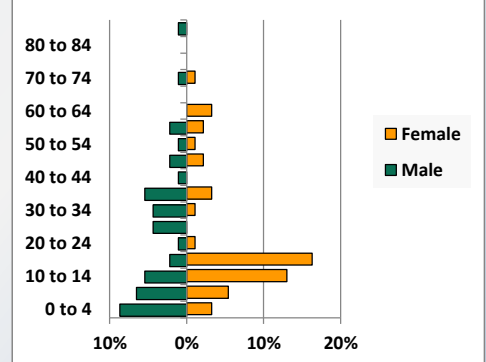
White, Not Hispanic



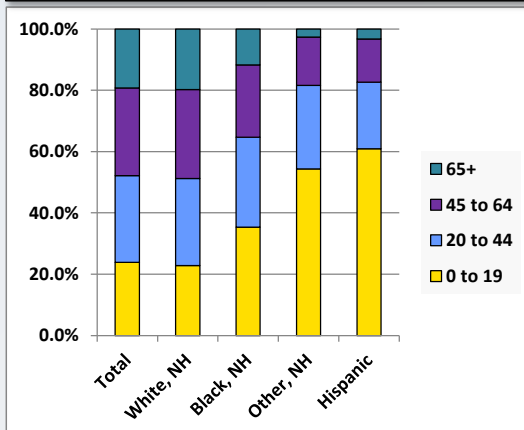
Black, Non-Hispanic



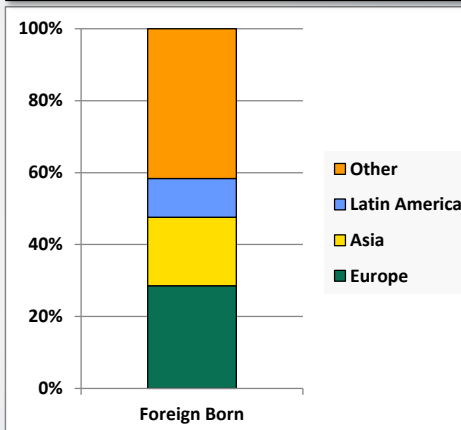
Hispanic



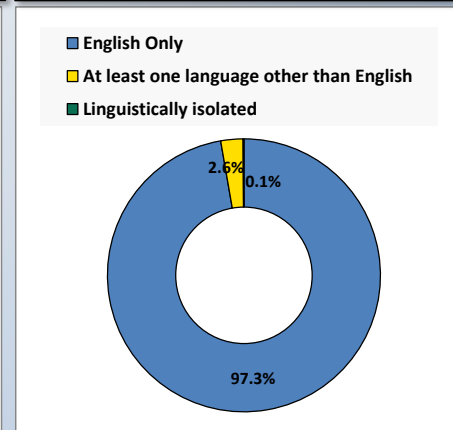
Age by Race and Ethnicity, 2010



Foreign Born, 2010



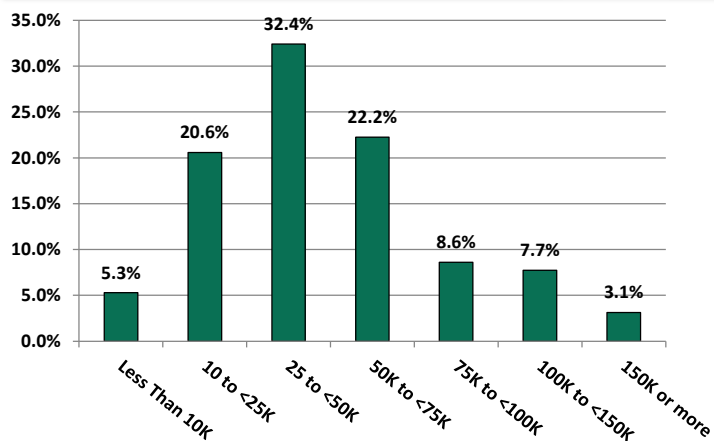
Household Language, 2010



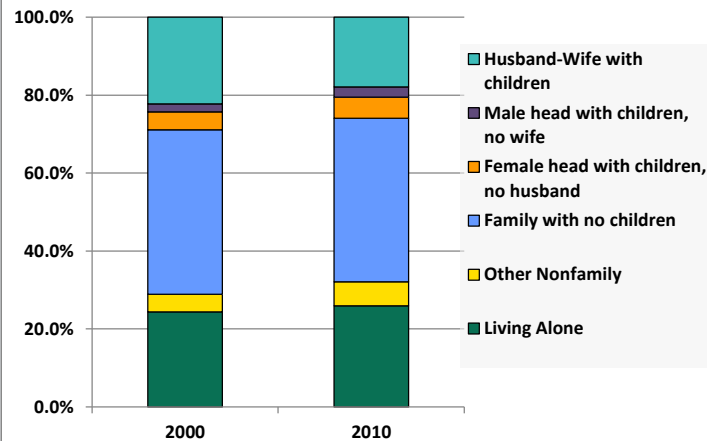
# Demographic Profile

Muncy Public Library

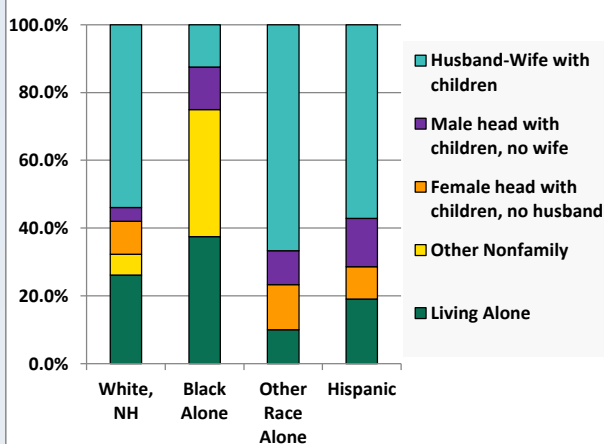
Household Income Distribution, 2008-2012



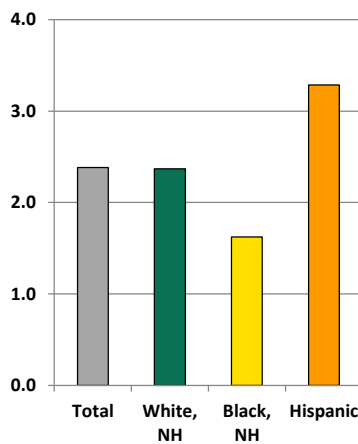
Household Type, 2000 and 2010



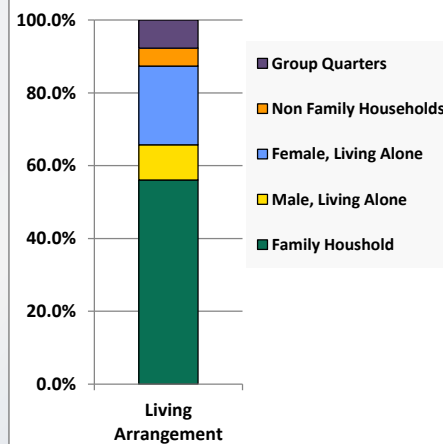
Household Type by Race/Ethnicity, 2010



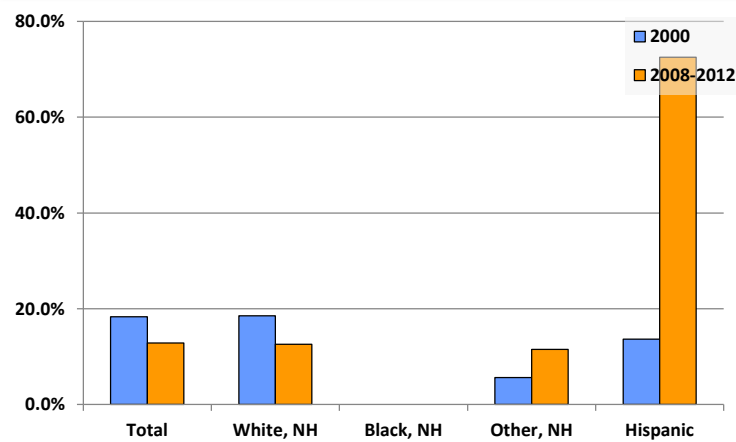
Average Household Size, 2010



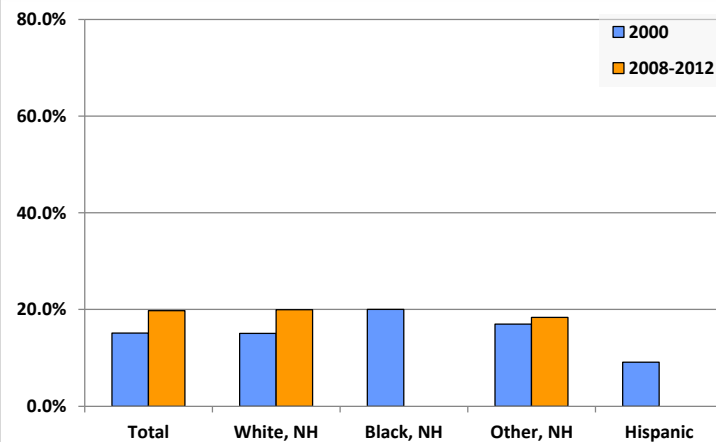
Living Arrangements 65+, 2008-2012



Percent of Adults that Did Not Complete High School



Percent of Adults Who Attained a Bachelor's Degree or Higher



# Reference Data

## Muncy Public Library

	Total Population	White, Non- Hispanic	Black, Non- Hispanic	Other, Non- Hispanic	Detail for Other, Non-Hispanic					Hispanic or Latino
					AIAN	Asian	NHOPI	Some Other Race	Two or More Races	
A. Total Population										
2000 Total	7,209	7,071	8	90	16	29	0	2	43	40
2000 pct of Total	100.0%	98.1%	0.1%	1.2%	0.2%	0.4%	0.0%	0.0%	0.6%	0.6%
2010 Total	7,040	6,817	17	114	17	39	0	5	53	92
2010 pct of Total	100.0%	96.8%	0.2%	1.6%	0.2%	0.6%	0.0%	0.1%	0.8%	1.3%
B. Population by Major Age Groups by Race and Ethnicity										
2000										
0-19	1,792	1,740	3	34	8	7	0	0	19	15
20-64	4,116	4,040	5	47	6	20	0	2	19	24
65+	1,301	1,291	0	9	2	2	0	0	5	1
85+	188	187	0	1	1	0	0	0	0	0
2010										
0-19	1,680	1,556	6	62	8	20	0	2	32	56
20-64	4,008	3,917	9	49	9	19	0	2	19	33
65+	1,352	1,344	2	3	0	0	0	1	2	3
85+	208	207	0	0	0	0	0	0	0	1
C. Age Mix for Each Racial and Ethnic Group										
2000										
0-19	24.9%	24.6%	37.5%	37.8%	50.0%	24.1%	0.0%	0.0%	44.2%	37.5%
20-64	57.1%	57.1%	62.5%	52.2%	37.5%	69.0%	0.0%	100.0%	44.2%	60.0%
65+	18.0%	18.3%	0.0%	10.0%	12.5%	6.9%	0.0%	0.0%	11.6%	2.5%
85+	2.6%	2.6%	0.0%	1.1%	6.3%	0.0%	0.0%	0.0%	0.0%	0.0%
2010										
0-19	23.9%	22.8%	35.3%	54.4%	47.1%	51.3%	0.0%	40.0%	60.4%	60.9%
20-64	56.9%	57.5%	52.9%	43.0%	52.9%	48.7%	0.0%	40.0%	35.8%	35.9%
65+	19.2%	19.7%	11.8%	2.6%	0.0%	0.0%	0.0%	20.0%	3.8%	3.3%
85+	3.0%	3.0%	0.0%	0.0%	0.0%	0.0%	0.0%	0.0%	0.0%	1.1%
D. Racial and Ethnic Composition of Each Age Group										
2000										
0-19	100.0%	97.1%	0.2%	1.9%	0.4%	0.4%	0.0%	0.0%	1.1%	0.8%
20-64	100.0%	98.2%	0.1%	1.1%	0.1%	0.5%	0.0%	0.0%	0.5%	0.6%
65+	100.0%	99.2%	0.0%	0.7%	0.2%	0.2%	0.0%	0.0%	0.4%	0.1%
85+	100.0%	99.5%	0.0%	0.5%	0.5%	0.0%	0.0%	0.0%	0.0%	0.0%
2010										
0-19	100.0%	92.6%	0.4%	3.7%	0.5%	1.2%	0.0%	0.1%	1.9%	3.3%
20-64	100.0%	97.7%	0.2%	1.2%	0.2%	0.5%	0.0%	0.0%	0.5%	0.8%
65+	100.0%	99.4%	0.1%	0.2%	0.0%	0.0%	0.0%	0.1%	0.1%	0.2%
85+	100.0%	99.5%	0.0%	0.0%	0.0%	0.0%	0.0%	0.0%	0.0%	0.5%
E. Population Growth										
2000-2010, Change										
0-19	-112	-184	3	28	0	13	0	2	13	41
20-64	-108	-123	4	2	3	-1	0	0	0	9
65+	51	53	2	-6	-2	-2	0	1	-3	2
85+	20	20	0	-1	-1	0	0	0	0	1
Total	-169	-254	9	24	1	10	0	3	10	52
2000-2010, Pct Change										
0-19	-6.3%	-10.6%	100.0%	82.4%	0.0%	185.7%	0.0%	0.0%	68.4%	273.3%
20-64	-2.6%	-3.0%	80.0%	4.3%	50.0%	-5.0%	0.0%	0.0%	0.0%	37.5%
65+	3.9%	4.1%	0.0%	-66.7%	-100.0%	-100.0%	0.0%	0.0%	-60.0%	200.0%
85+	10.6%	10.7%	0.0%	-100.0%	-100.0%	0.0%	0.0%	0.0%	0.0%	0.0%
Total	-2.3%	-3.6%	112.5%	26.7%	6.3%	34.5%	0.0%	150.0%	23.3%	130.0%

Source: Decennial Census 2010, 2000, American Community Survey 2008-2012

Prepared for the Pennsylvania State Library by The Pennsylvania State Data Center, 9/2014

# Reference Data

## Muncy Public Library

	Total Population	White, Non- Hispanic	Black, Non- Hispanic	Other, Non- Hispanic	Detail for Other, Non-Hispanic					Hispanic or Latino
					AIAN	Asian	NHOPI	Some Other	Two or More	
								Race	Races	
F. Population by Library-Defined Age Groups, 2010										
0-5	497	456	1	27	2	11	0	0	14	13
6-10	410	385	0	14	4	3	0	1	6	11
11-13	264	244	0	6	2	2	0	0	2	14
14-18	461	426	5	14	0	4	0	1	9	16
19-32	969	941	3	14	2	5	0	0	7	11
33-45	1,168	1,134	2	21	5	9	0	0	7	11
46-64	1,919	1,887	4	15	2	5	0	2	6	13
65-84	1,144	1,137	2	3	0	0	0	1	2	2
85+	208	207	0	0	0	0	0	0	0	1
Total	7,040	6,817	17	114	17	39	0	5	53	92
G. Population by 5-Year Age Cohorts, 2010										
0-4	409	374	1	23	1	11	0	0	11	11
5-9	419	391	0	17	5	3	0	1	8	11
10-14	428	402	0	9	2	3	0	1	3	17
15-19	424	389	5	13	0	3	0	0	10	17
20-24	303	296	2	3	1	0	0	0	2	2
25-29	392	382	0	6	1	3	0	0	2	4
30-34	386	369	1	11	2	6	0	0	3	5
35-39	445	430	1	6	2	3	0	0	1	8
40-44	465	458	1	5	1	2	0	0	2	1
45-49	465	454	1	6	0	1	0	1	4	4
50-54	549	540	1	6	2	1	0	0	3	2
55-59	533	523	1	5	0	3	0	1	1	4
60-64	470	465	1	1	0	0	0	0	1	3
65-69	381	378	2	1	0	0	0	1	0	0
70-74	300	298	0	0	0	0	0	0	0	2
75-79	257	256	0	1	0	0	0	0	1	0
80-84	206	205	0	1	0	0	0	0	1	0
85-89	136	135	0	0	0	0	0	0	0	1
90-94	60	60	0	0	0	0	0	0	0	0
95-99	10	10	0	0	0	0	0	0	0	0
100+	2	2	0	0	0	0	0	0	0	0
Total	7,040	6,817	17	114	17	39	0	5	53	92

Source: Decennial Census 2010, 2000, American Community Survey 2008-2012

Prepared for the Pennsylvania State Library by The Pennsylvania State Data Center, 9/2014

# Reference Data

## Muncy Public Library

### H. Income Distribution, 2008-2012

Range (in thousands)	Households	Pct of Total
<\$10K	161	5.3%
\$10K to <\$25K	625	20.6%
\$25K to <\$50K	985	32.4%
\$50K to <\$75K	676	22.2%
\$75K to <\$100K	262	8.6%
\$100K to <\$150K	235	7.7%
\$150K+	95	3.1%

### I. Household Type, 2010

Household Type	2000	2000pct	2010	2010pct
Total Households	2,920	100.0%	2,892	100.0%
Family Households	2,077	71.1%	1,963	67.9%
Husband-wife, no children w/children	649	22.2%	518	17.9%
Female head, no husband, w/ children	135	4.6%	156	5.4%
Male head, no wife, w/ children	60	2.1%	76	2.6%
Without children	1,233	42.2%	1,213	41.9%
Nonfamily households	843	28.9%	929	32.1%
Living alone	713	24.4%	751	26.0%
Other nonfamily	130	4.5%	178	6.2%

### J. Household Type by Race and Ethnicity, 2008-2012

Household Type	White, NH	Black, NH	Other, NH	Hispanic
Total Households	2,841	8	30	21
Husband wife family	54.0%	12.5%	66.7%	57.1%
Family with male head, no wife	4.0%	12.5%	10.0%	14.3%
family with female head, no husband	9.8%	0.0%	13.3%	9.5%
Living alone	26.1%	37.5%	10.0%	19.0%
Other nonfamily	6.2%	37.5%	0.0%	0.0%

### K. Poverty, 2008-2012

Families	Poverty	PA
All families	6.2%	9.1%
Families w/ related children	8.9%	15.3%
Female householder, no husband present	27.4%	28.8%
Female householder, no husband present, w/ related children	40.8%	39.2%
All people	8.2%	13.1%
Under 18 years	11.2%	18.4%
18 to 64 years	7.1%	12.3%
65 years and over	8.8%	8.4%

### L. Educational Attainment by Race and Ethnicity, 2008-2012

Education Level	White, NH	Black	Other	Hispanic	Total
Population 25 years and over	5,116	15	87	40	5,248
Less than high school	12.6%	0.0%	11%	72.5%	12.8%
High school graduate (includes equivalency	47.2%	100.0%	0%	0.0%	46.3%
Some college or associates degree	20.2%	0.0%	70%	27.5%	21.1%
Bachelors degree or higher	20.0%	0.0%	18%	0.0%	19.8%

### M. Occupation, 2008-2012

Occupation	Estimate	Percent
Civilian population age 16 years and over	3,422	100.0%
Management, professional, and related occupations	793	23.2%
Service occupations	679	19.8%
Sales and office occupations	980	28.6%
Farming, fishing, and forestry occupations	28	0.8%
Construction, extraction, maintenance, and repair occupations	309	9.0%
Production, transportation, and material moving occupations	633	18.5%

### N. Class of Worker, 2008-2012

Occupation	Estimate	Percent
Civilian population age 16 years and over	3,422	100.0%
Private, for profit, wage and salary employee	2,442	71.4%
Private, not for profit, wage and salary employee	490	14.3%
Private, for profit, wage and salary self-employed in own business	51	1.5%
Government workers	330	9.6%
Self-employed in own not incorporated business	109	3.2%
Unpaid family workers in family business	0	0.0%