

## Demographic Profile Nanty Glo Public Library

**Population Growth:** The total population of the Nanty Glo Public Library service area decreased by -10.5 percent over the past decade to 2,734; this decline rate was lower than the statewide rate of 3.4 percent.

**Age and Sex:** In 2010, the Nanty Glo Public Library service area had a total population of 2,734 - 1,317 males (48.2 percent) and 1,417 females (51.8 percent). The age structure of the population in 2010 was as follows: 23.7 percent of the population was under 20 years old, 55.8 percent was 20 to 64 years old and 20.4 percent was 65 years or older.

**Race and Ethnicity:** For people reporting one race alone, not of Hispanic ethnicity, 97.5 percent were White; .4 percent were Black or African American; 1.2 percent were Other Race Alone.<sup>1</sup> A total of 25 or .9 percent of the population were Hispanic.<sup>2</sup>

**Households:** In 2010, there were 1,173 households in the Nanty Glo Public Library service area. The average household size was 2.33 people. Families made up 63.7 percent of the households. This figure includes both families with (23.5 percent) and without (40.2 percent) children. Of families with children less than 18 years old, 14.2 percent were married-couple families, 6.7 percent were female householder families with no husband present, and the remaining (2.6 percent) were male-headed households with no wife present.

**Education:** The educational attainment of the population 25 years and over was lower in the Nanty Glo Public Library service area than in Pennsylvania. During the period 2008-2012, 13.5 percent of residents had earned a Bachelor's degree or higher, compared with 27.0 percent statewide. A total of 312 or 16.3 percent had not completed high school, compared with 11.7 percent for the commonwealth as a whole.

**Income and Poverty:** Households with incomes of less than \$25,000 (31.5 percent) made up the largest percent of households in the Nanty Glo Public Library service area in 2008-2012. For comparison, 23.6 percent of commonwealth households were in this range during the period.

In 2008-2012, the overall poverty rate for the Nanty Glo Public Library service area was higher than Pennsylvania (13.6 percent compared to 13.1 percent). The poverty rate for the population under 18 years of age was 23.8 percent, compared with 9.4 percent of people 18 to 64 years and 12.1 percent for those aged 65 years and over. A total of 68 or 9.1 percent of all families had incomes below poverty level. In 2008-2012, 15.4 percent of families with related children and 41.3 percent of families with a female householder and no husband with related children present had incomes below the poverty level.

**Class of Worker and Occupation:** In 2008-2012, 80.5 percent of the workforce was private wage and salary workers; 19.5 percent were federal, state, or local government workers; and .0 percent were self-employed in their own (not incorporated) business.

The top occupation group for the civilian employed population 16 years and over in the Nanty Glo Public Library service area in 2008-2012 was Service-related (28.4 percent).

---

<sup>1</sup> Other race includes those who identified themselves as American Indian/Alaska Native, Asian, Native Hawaiian/Other Pacific Islander, Some Other Race and Two or More Races on the 2010 Census form.

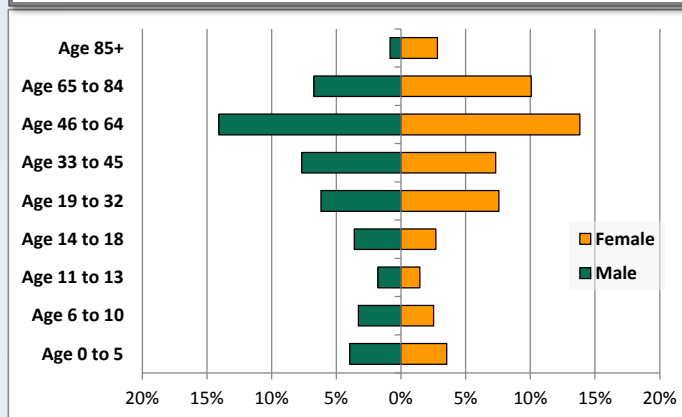
<sup>2</sup> People of Hispanic origin may be of any race.

# Demographic Profile

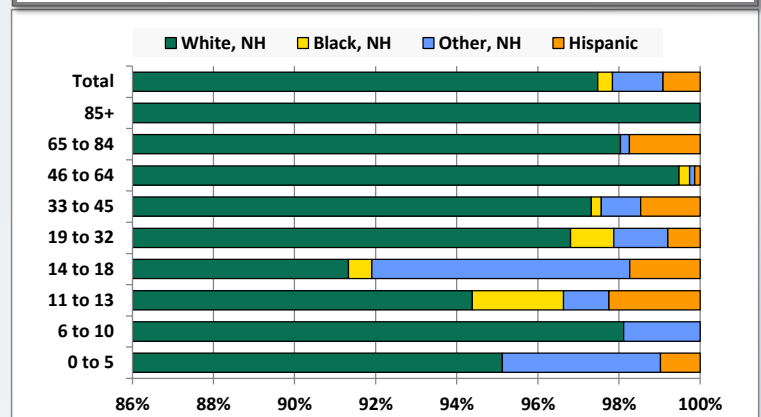
Nanty Glo Public Library

Key Indicators		
	2000	2010
<b>Population Growth</b>		
Total Population	3,054	2,734
10-Year Growth	N/A	-10.5%
<b>Diversity</b>		
White Alone, Non-Hispanic	99.1%	97.5%
Black Alone, Non-Hispanic	0.2%	0.4%
Other Race Alone, Non-Hispanic	0.3%	1.2%
Percent Hispanic	0.3%	0.9%
<b>Aging</b>		
Percent 65 Years and Over	21.3%	20.4%
<b>Households</b>		
Percent Married Couple with Own Children	17.6%	14.2%
Percent Living Alone	29.9%	31.2%

Population by Library-Defined Age Group, 2010



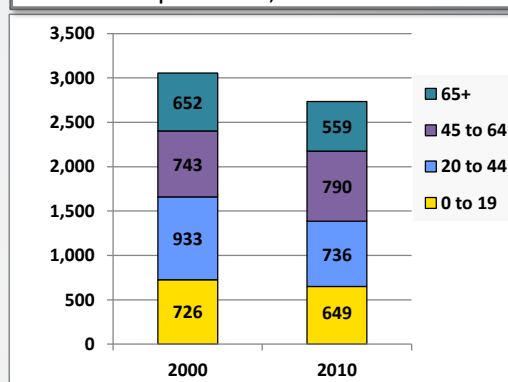
Race/Ethnicity by Library-Defined Age Group, 2010



Population Growth by Library-Defined Age Group, 2000 to 2010

Age Group	2010	Change	
		Numeric	Percent
Total	2,734	-320	-10.5%
85+	100	34	51.5%
65 to 84	459	-127	-21.7%
46 to 64	763	61	8.7%
33 to 45	410	-90	-18.0%
19 to 32	376	-127	-25.2%
14 to 18	173	-13	-7.0%
11 to 13	89	-13	-12.7%
6 to 10	159	-39	-19.7%
0 to 5	205	-6	-2.8%

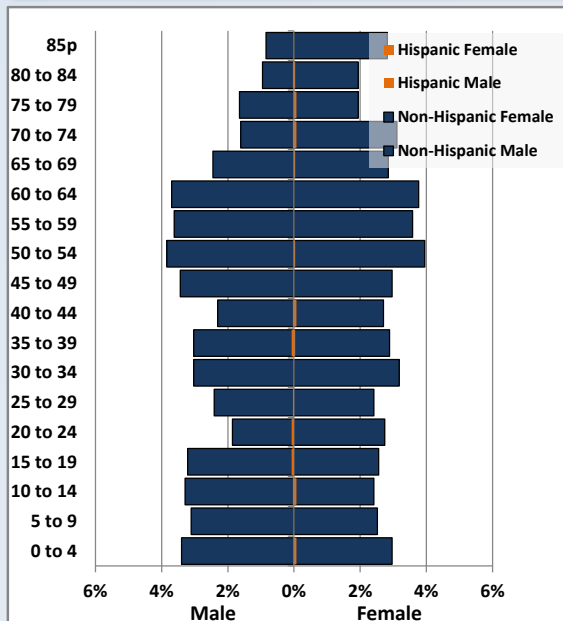
Population Total, 2000 and 2010



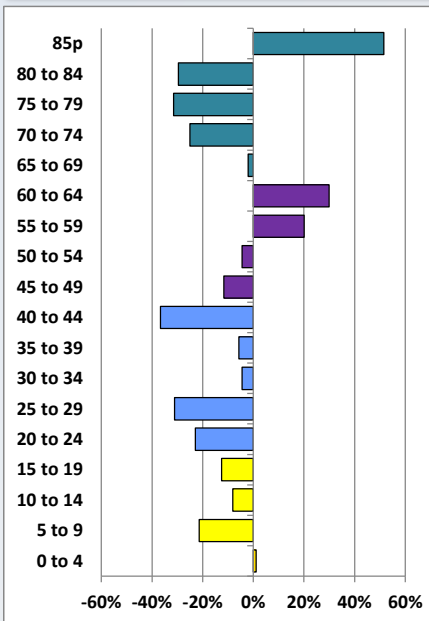
# Demographic Profile

Nanty Glo Public Library

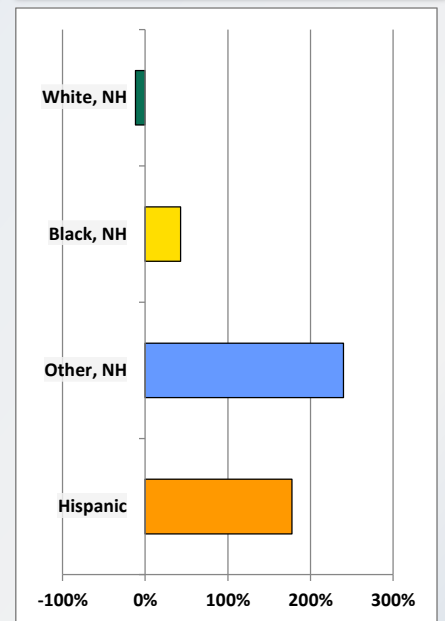
Population by 5-Year Age Cohorts



Pop Change by Age, 2000 to 2010

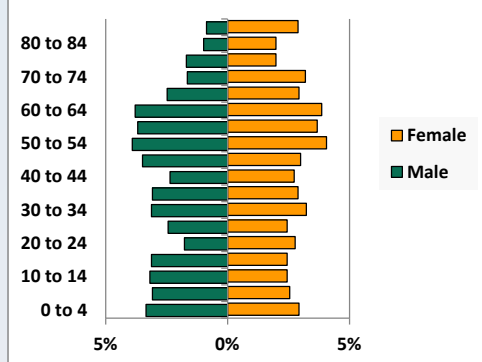


Pop Change by Race/Ethnicity, 2000 to 2010

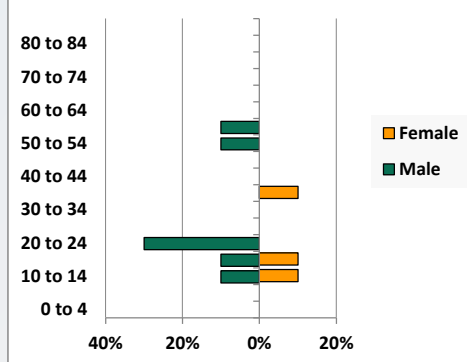


Population by Age, Race and Ethnicity 2010

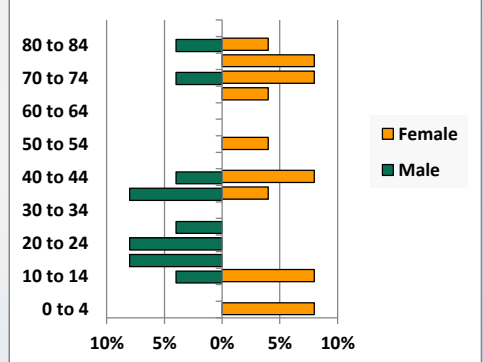
White, Not Hispanic



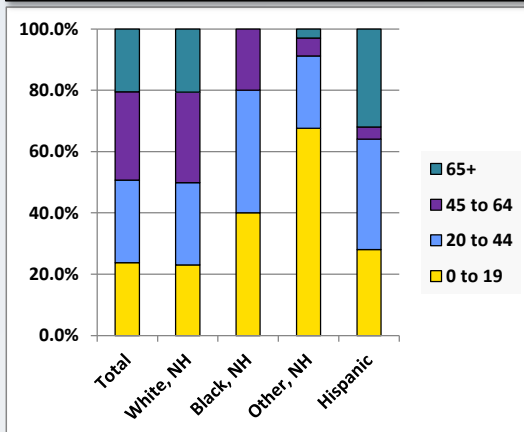
Black, Non-Hispanic



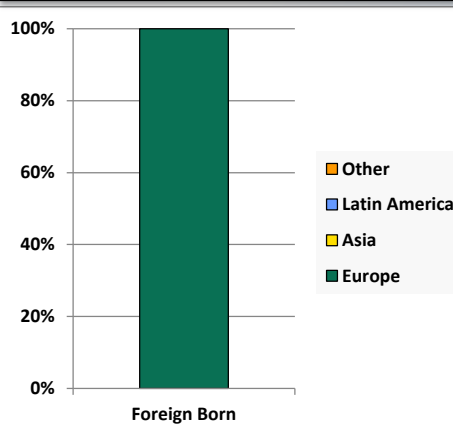
Hispanic



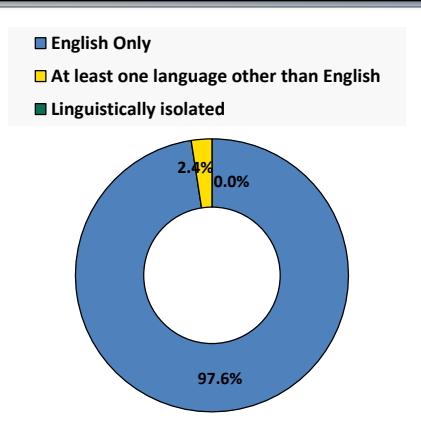
Age by Race and Ethnicity, 2010



Foreign Born, 2010



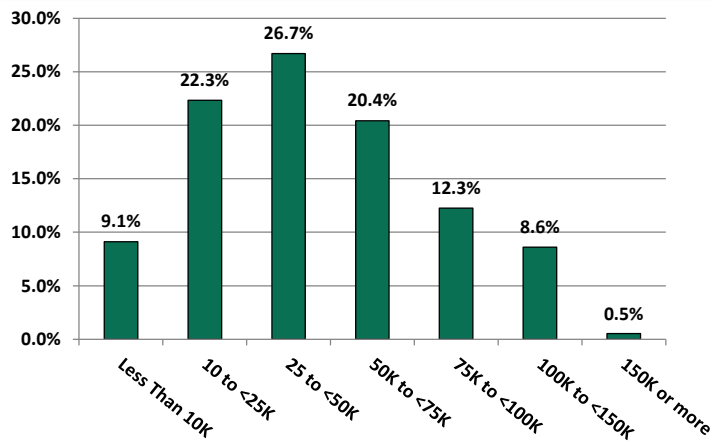
Household Language, 2010



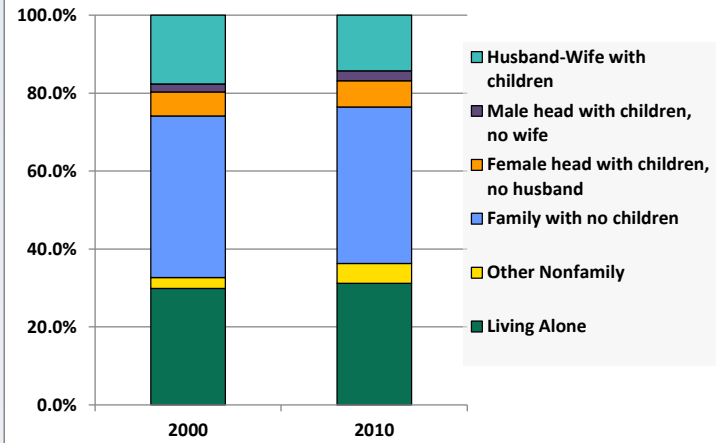
# Demographic Profile

Nanty Glo Public Library

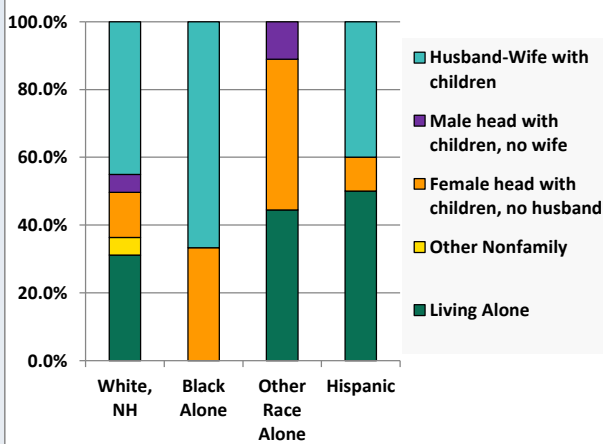
Household Income Distribution, 2008-2012



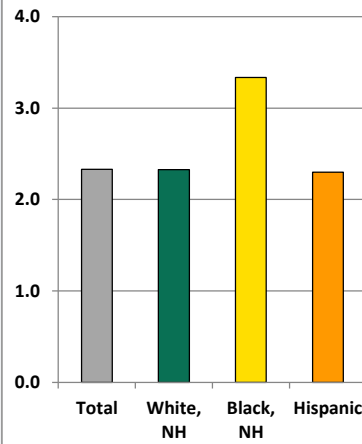
Household Type, 2000 and 2010



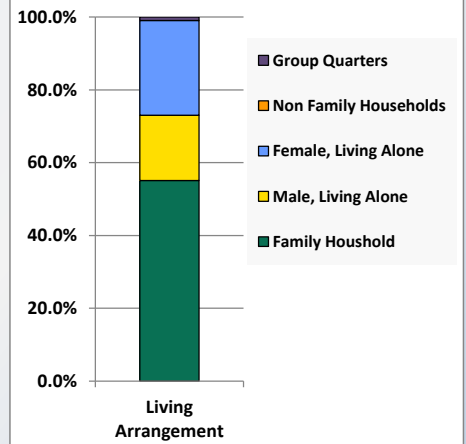
Household Type by Race/Ethnicity, 2010



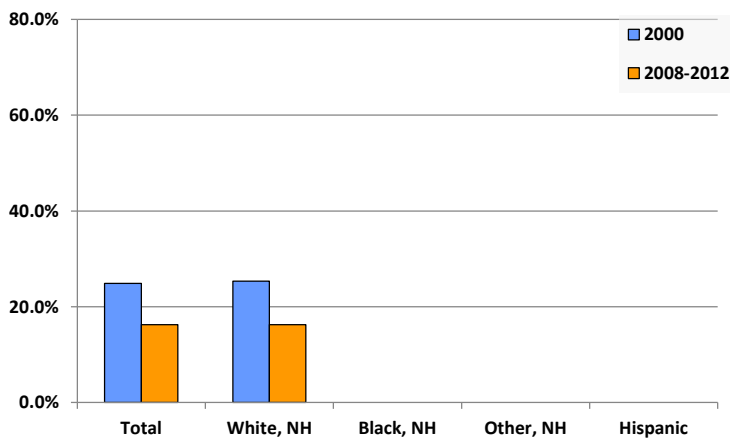
Average Household Size, 2010



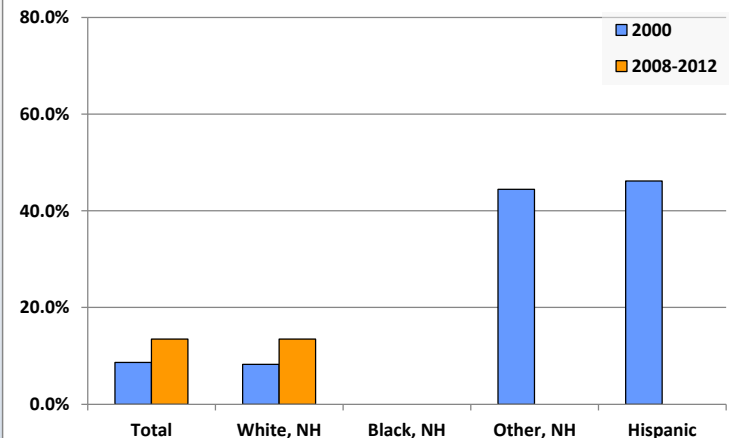
Living Arrangements 65+, 2008-2012



Percent of Adults that Did Not Complete High School



Percent of Adults Who Attained a Bachelor's Degree or Higher



# Reference Data

## Nanty Glo Public Library

					Detail for Other, Non-Hispanic					
	Total Population	White, Non- Hispanic	Black, Non- Hispanic	Other, Non- Hispanic	AIAN	Asian	NHOPI	Some Other	Two or More	Hispanic or
								Race	Races	Latino
A. Total Population										
2000 Total	3,054	3,028	7	10	1	0	0	0	9	9
2000 pct of Total	100.0%	99.1%	0.2%	0.3%	0.0%	0.0%	0.0%	0.0%	0.3%	0.3%
2010 Total	2,734	2,665	10	34	0	2	0	0	32	25
2010 pct of Total	100.0%	97.5%	0.4%	1.2%	0.0%	0.1%	0.0%	0.0%	1.2%	0.9%
B. Population by Major Age Groups by Race and Ethnicity										
2000										
0-19	726	712	6	6	1	0	0	0	5	2
20-64	1,676	1,670	1	2	0	0	0	0	2	3
65+	652	646	0	2	0	0	0	0	2	4
85+	66	66	0	0	0	0	0	0	0	0
2010										
0-19	649	615	4	23	0	0	0	0	23	7
20-64	1,526	1,500	6	10	0	2	0	0	8	10
65+	559	550	0	1	0	0	0	0	1	8
85+	100	100	0	0	0	0	0	0	0	0
C. Age Mix for Each Racial and Ethnic Group										
2000										
0-19	23.8%	23.5%	85.7%	60.0%	100.0%	0.0%	0.0%	0.0%	55.6%	22.2%
20-64	54.9%	55.2%	14.3%	20.0%	0.0%	0.0%	0.0%	0.0%	22.2%	33.3%
65+	21.3%	21.3%	0.0%	20.0%	0.0%	0.0%	0.0%	0.0%	22.2%	44.4%
85+	2.2%	2.2%	0.0%	0.0%	0.0%	0.0%	0.0%	0.0%	0.0%	0.0%
2010										
0-19	23.7%	23.1%	40.0%	67.6%	0.0%	0.0%	0.0%	0.0%	71.9%	28.0%
20-64	55.8%	56.3%	60.0%	29.4%	0.0%	100.0%	0.0%	0.0%	25.0%	40.0%
65+	20.4%	20.6%	0.0%	2.9%	0.0%	0.0%	0.0%	0.0%	3.1%	32.0%
85+	3.7%	3.8%	0.0%	0.0%	0.0%	0.0%	0.0%	0.0%	0.0%	0.0%
D. Racial and Ethnic Composition of Each Age Group										
2000										
0-19	100.0%	98.1%	0.8%	0.8%	0.1%	0.0%	0.0%	0.0%	0.7%	0.3%
20-64	100.0%	99.6%	0.1%	0.1%	0.0%	0.0%	0.0%	0.0%	0.1%	0.2%
65+	100.0%	99.1%	0.0%	0.3%	0.0%	0.0%	0.0%	0.0%	0.3%	0.6%
85+	100.0%	100.0%	0.0%	0.0%	0.0%	0.0%	0.0%	0.0%	0.0%	0.0%
2010										
0-19	100.0%	94.8%	0.6%	3.5%	0.0%	0.0%	0.0%	0.0%	3.5%	1.1%
20-64	100.0%	98.3%	0.4%	0.7%	0.0%	0.1%	0.0%	0.0%	0.5%	0.7%
65+	100.0%	98.4%	0.0%	0.2%	0.0%	0.0%	0.0%	0.0%	0.2%	1.4%
85+	100.0%	100.0%	0.0%	0.0%	0.0%	0.0%	0.0%	0.0%	0.0%	0.0%
E. Population Growth										
2000-2010, Change										
0-19	-77	-97	-2	17	-1	0	0	0	18	5
20-64	-150	-170	5	8	0	2	0	0	6	7
65+	-93	-96	0	-1	0	0	0	0	-1	4
85+	34	34	0	0	0	0	0	0	0	0
Total	-320	-363	3	24	-1	2	0	0	23	16
2000-2010, Pct Change										
0-19	-10.6%	-13.6%	-33.3%	283.3%	-100.0%	0.0%	0.0%	0.0%	360.0%	250.0%
20-64	-8.9%	-10.2%	500.0%	400.0%	0.0%	0.0%	0.0%	0.0%	300.0%	233.3%
65+	-14.3%	-14.9%	0.0%	-50.0%	0.0%	0.0%	0.0%	0.0%	-50.0%	100.0%
85+	51.5%	51.5%	0.0%	0.0%	0.0%	0.0%	0.0%	0.0%	0.0%	0.0%
Total	-10.5%	-12.0%	42.9%	240.0%	-100.0%	0.0%	0.0%	0.0%	255.6%	177.8%

Source: Decennial Census 2010, 2000, American Community Survey 2008-2012

Prepared for the Pennsylvania State Library by The Pennsylvania State Data Center, 9/2014

# Reference Data

## Nanty Glo Public Library

	Total Population	White, Non- Hispanic	Black, Non- Hispanic	Other, Non- Hispanic	Detail for Other, Non-Hispanic					Hispanic or Latino	
					AIAN	Asian	NHOPI	Some Other	Two or More		
								Race	Races		
F. Population by Library-Defined Age Groups, 2010											
0-5	205	195	0	8	0	0	0	0	8	2	
6-10	159	156	0	3	0	0	0	0	3	0	
11-13	89	84	2	1	0	0	0	0	1	2	
14-18	173	158	1	11	0	0	0	0	11	3	
19-32	376	364	4	5	0	0	0	0	5	3	
33-45	410	399	1	4	0	1	0	0	3	6	
46-64	763	759	2	1	0	1	0	0	0	1	
65-84	459	450	0	1	0	0	0	0	1	8	
85+	100	100	0	0	0	0	0	0	0	0	
Total	2,734	2,665	10	34	0	2	0	0	32	25	
G. Population by 5-Year Age Cohorts, 2010											
0-4	176	167	0	7	0	0	0	0	7	2	
5-9	154	150	0	4	0	0	0	0	4	0	
10-14	159	150	2	4	0	0	0	0	4	3	
15-19	160	148	2	8	0	0	0	0	8	2	
20-24	128	121	3	2	0	0	0	0	2	2	
25-29	133	130	0	2	0	0	0	0	2	1	
30-34	170	169	0	1	0	0	0	0	1	0	
35-39	165	159	1	2	0	1	0	0	1	3	
40-44	140	136	0	1	0	0	0	0	1	3	
45-49	175	173	0	2	0	1	0	0	1	0	
50-54	214	212	1	0	0	0	0	0	0	1	
55-59	197	196	1	0	0	0	0	0	0	0	
60-64	204	204	0	0	0	0	0	0	0	0	
65-69	146	144	0	1	0	0	0	0	1	1	
70-74	132	129	0	0	0	0	0	0	0	3	
75-79	100	98	0	0	0	0	0	0	0	2	
80-84	81	79	0	0	0	0	0	0	0	2	
85-89	62	62	0	0	0	0	0	0	0	0	
90-94	30	30	0	0	0	0	0	0	0	0	
95-99	8	8	0	0	0	0	0	0	0	0	
100+	0	0	0	0	0	0	0	0	0	0	
Total	2,734	2,665	10	34	0	2	0	0	32	25	

Source: Decennial Census 2010, 2000, American Community Survey 2008-2012  
 Prepared for the Pennsylvania State Library by The Pennsylvania State Data Center, 9/2014

# Reference Data

Nanty Glo Public Library

## H. Income Distribution, 2008-2012

Range (in thousands)	Households	Pct of Total
<\$10K	105	9.1%
\$10K to <\$25K	257	22.3%
\$25K to <\$50K	307	26.7%
\$50K to <\$75K	235	20.4%
\$75K to <\$100K	141	12.3%
\$100K to <\$150K	99	8.6%
\$150K+	6	0.5%

## I. Household Type, 2010

Household Type	2000	2000pct	2010	2010pct
Total Households	1,272	100.0%	1,173	100.0%
Family Households	856	67.3%	747	63.7%
Husband-wife, no children w/children	224	17.6%	167	14.2%
Female head, no husband, w/ children	78	6.1%	79	6.7%
Male head, no wife, w/ children	27	2.1%	30	2.6%
Without children	527	41.4%	471	40.2%
Nonfamily households	416	32.7%	426	36.3%
Living alone	380	29.9%	366	31.2%
Other nonfamily	36	2.8%	60	5.1%

## J. Household Type by Race and Ethnicity, 2008-2012

Household Type	White, NH	Black, NH	Other, NH	Hispanic
Total Households	1,153	3	9	10
Husband wife family	45.1%	66.7%	0.0%	40.0%
Family with male head, no wife	5.2%	0.0%	11.1%	0.0%
family with female head, no husband	13.4%	33.3%	44.4%	10.0%
Living alone	31.1%	0.0%	44.4%	50.0%
Other nonfamily	5.2%	0.0%	0.0%	0.0%

## K. Poverty, 2008-2012

Families	Poverty	PA
All families	9.1%	9.1%
Families w/ related children	15.4%	15.3%
Female householder, no husband present	27.0%	28.8%
Female householder, no husband present, w/ related children	41.3%	39.2%
All people	13.6%	13.1%
Under 18 years	23.8%	18.4%
18 to 64 years	9.4%	12.3%
65 years and over	12.1%	8.4%

## L. Educational Attainment by Race and Ethnicity, 2008-2012

Education Level	White, NH	Black	Other	Hispanic	Total
Population 25 years and over	1,919	0	0	0	1,919
Less than high school	16.3%	0.0%	0%	0.0%	16.3%
High school graduate (includes equivalency	55.1%	0.0%	0%	0.0%	55.1%
Some college or associates degree	15.2%	0.0%	0%	0.0%	15.2%
Bachelors degree or higher	13.5%	0.0%	0%	0.0%	13.5%

## M. Occupation, 2008-2012

Occupation	Estimate	Percent
Civilian population age 16 years and over	1,043	100.0%
Management, professional, and related occupations	249	23.9%
Service occupations	296	28.4%
Sales and office occupations	183	17.5%
Farming, fishing, and forestry occupations	0	0.0%
Construction, extraction, maintenance, and repair occupations	142	13.6%
Production, transportation, and material moving occupations	173	16.6%

## N. Class of Worker, 2008-2012

Occupation	Estimate	Percent
Civilian population age 16 years and over	1,043	100.0%
Private, for profit, wage and salary employee	724	69.4%
Private, not for profit, wage and salary employee	116	11.1%
Private, for profit, wage and salary self-employed in own business	0	0.0%
Government workers	203	19.5%
Self-employed in own not incorporated business	0	0.0%
Unpaid family workers in family business	0	0.0%