

Demographic Profile New Brighton Public Library

Population Growth: The total population of the New Brighton Public Library service area decreased by -9.3 percent over the past decade to 6,025; this decline rate was lower than the statewide rate of 3.4 percent.

Age and Sex: In 2010, the New Brighton Public Library service area had a total population of 6,025 - 2,825 males (46.9 percent) and 3,200 females (53.1 percent). The age structure of the population in 2010 was as follows: 27.1 percent of the population was under 20 years old, 59.0 percent was 20 to 64 years old and 14.0 percent was 65 years or older.

Race and Ethnicity: For people reporting one race alone, not of Hispanic ethnicity, 82.8 percent were White; 10.7 percent were Black or African American; 5.1 percent were Other Race Alone.¹ A total of 91 or 1.5 percent of the population were Hispanic.²

Households: In 2010, there were 2,615 households in the New Brighton Public Library service area. The average household size was 2.27 people. Families made up 59.3 percent of the households. This figure includes both families with (28.6 percent) and without (30.7 percent) children. Of families with children less than 18 years old, 12.7 percent were married-couple families, 13.0 percent were female householder families with no husband present, and the remaining (2.9 percent) were male-headed households with no wife present.

Education: The educational attainment of the population 25 years and over was lower in the New Brighton Public Library service area than in Pennsylvania. During the period 2008-2012, 14.3 percent of residents had earned a Bachelor's degree or higher, compared with 27.0 percent statewide. A total of 446 or 11.3 percent had not completed high school, compared with 11.7 percent for the commonwealth as a whole.

Income and Poverty: Households with incomes of less than \$25,000 (39.1 percent) made up the largest percent of households in the New Brighton Public Library service area in 2008-2012. For comparison, 23.6 percent of commonwealth households were in this range during the period.

In 2008-2012, the overall poverty rate for the New Brighton Public Library service area was higher than Pennsylvania (21.6 percent compared to 13.1 percent). The poverty rate for the population under 18 years of age was 32.3 percent, compared with 20.4 percent of people 18 to 64 years and 7.7 percent for those aged 65 years and over. A total of 303 or 19.6 percent of all families had incomes below poverty level. In 2008-2012, 30.9 percent of families with related children and 52.8 percent of families with a female householder and no husband with related children present had incomes below the poverty level.

Class of Worker and Occupation: In 2008-2012, 86.0 percent of the workforce was private wage and salary workers; 9.2 percent were federal, state, or local government workers; and 3.4 percent were self-employed in their own (not incorporated) business.

The top occupation group for the civilian employed population 16 years and over in the New Brighton Public Library service area in 2008-2012 was Sales and office (27.9 percent).

¹ Other race includes those who identified themselves as American Indian/Alaska Native, Asian, Native Hawaiian/Other Pacific Islander, Some Other Race and Two or More Races on the 2010 Census form.

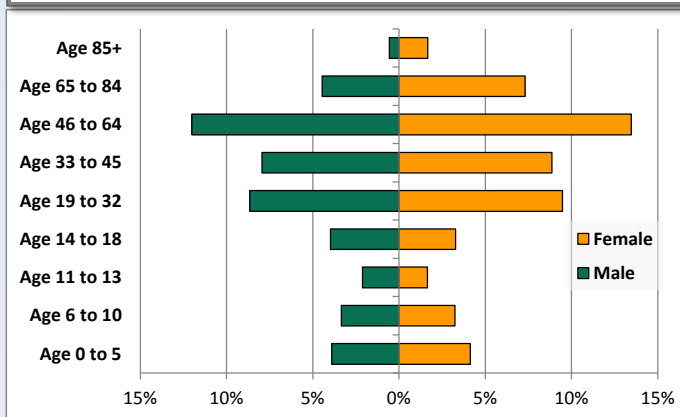
² People of Hispanic origin may be of any race.

Demographic Profile

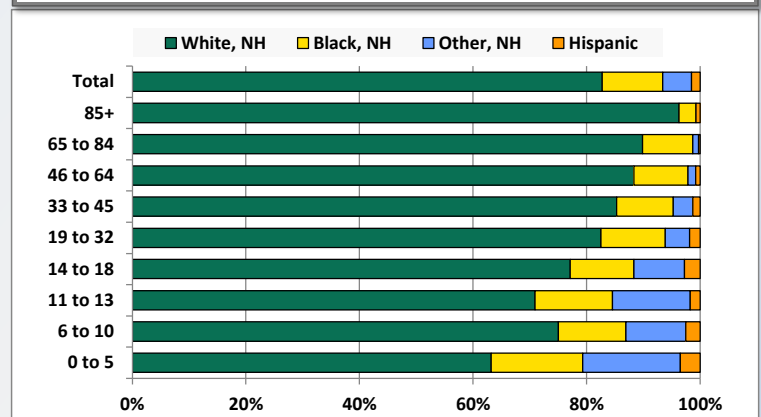
New Brighton Public Library

Key Indicators		
	2000	2010
Population Growth		
Total Population	6,641	6,025
10-Year Growth	N/A	-9.3%
Diversity		
White Alone, Non-Hispanic	86.0%	82.8%
Black Alone, Non-Hispanic	10.6%	10.7%
Other Race Alone, Non-Hispanic	3.0%	5.1%
Percent Hispanic	0.5%	1.5%
Aging		
Percent 65 Years and Over	14.7%	14.0%
Households		
Percent Married Couple with Own Children	17.8%	12.7%
Percent Living Alone	32.3%	35.1%

Population by Library-Defined Age Group, 2010



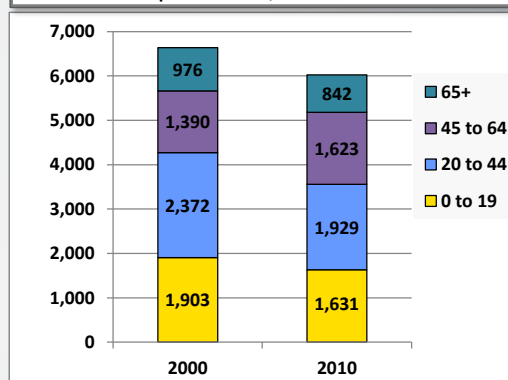
Race/Ethnicity by Library-Defined Age Group, 2010



Population Growth by Library-Defined Age Group, 2000 to 2010

Age Group	2010	Change	
		Numeric	Percent
Total	6,025	-616	-9.3%
85+	134	30	28.8%
65 to 84	708	-164	-18.8%
46 to 64	1,534	238	18.4%
33 to 45	1,012	-301	-22.9%
19 to 32	1,092	-164	-13.1%
14 to 18	437	-46	-9.5%
11 to 13	227	-52	-18.6%
6 to 10	397	-101	-20.3%
0 to 5	484	-56	-10.4%

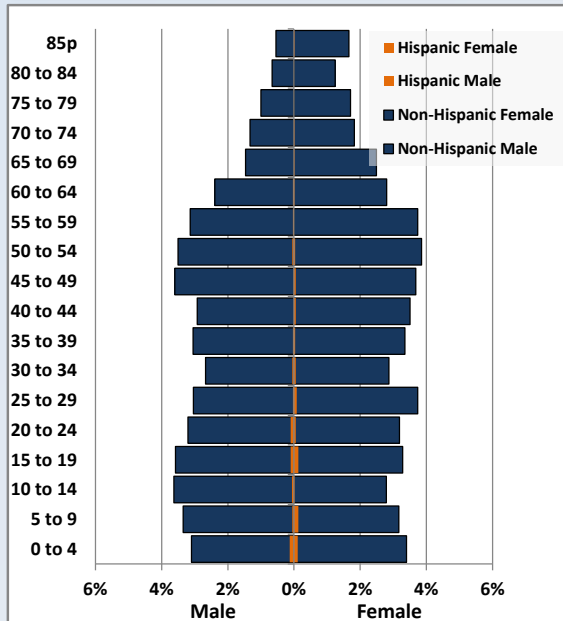
Population Total, 2000 and 2010



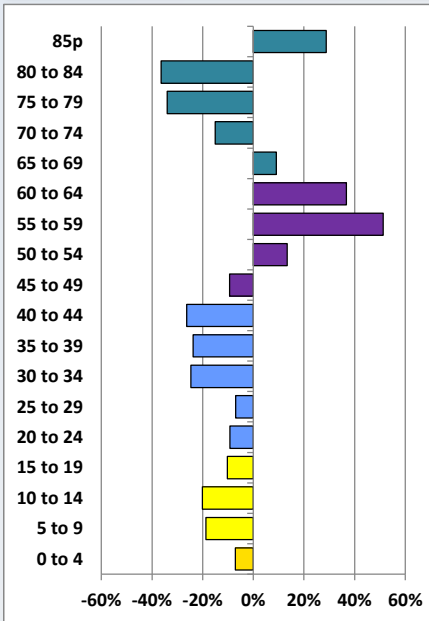
Demographic Profile

New Brighton Public Library

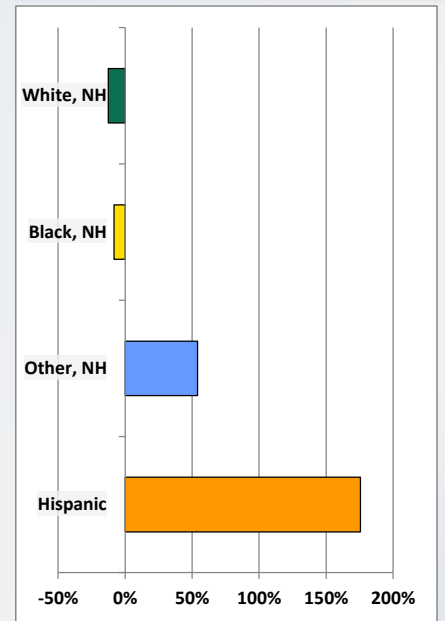
Population by 5-Year Age Cohorts



Pop Change by Age, 2000 to 2010

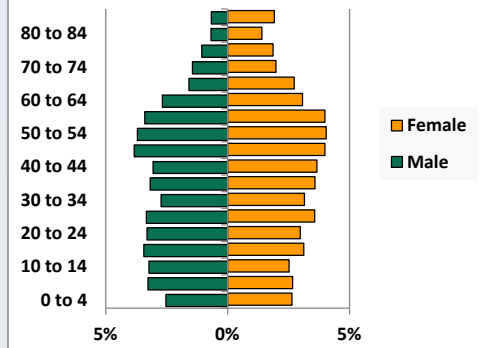


Pop Change by Race/Ethnicity, 2000 to 2010

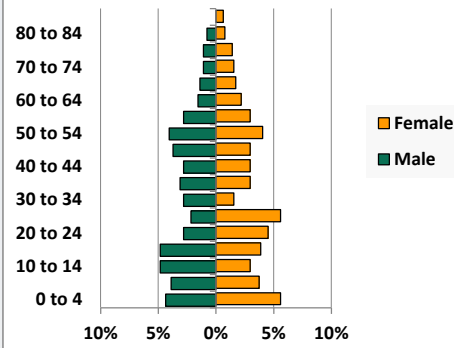


Population by Age, Race and Ethnicity 2010

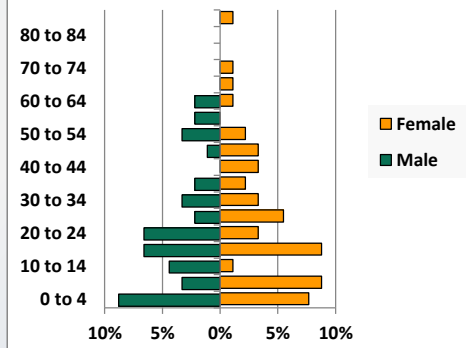
White, Not Hispanic



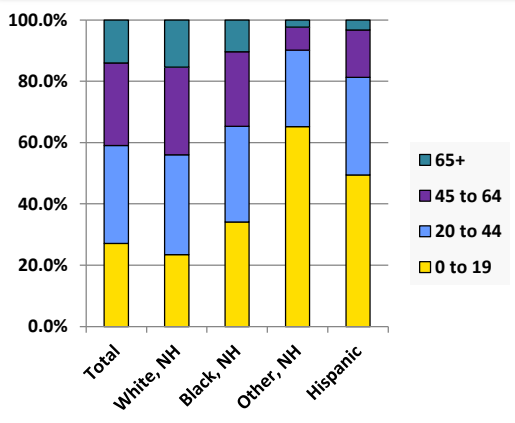
Black, Non-Hispanic



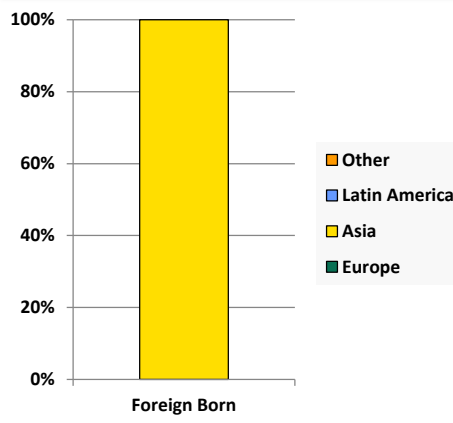
Hispanic



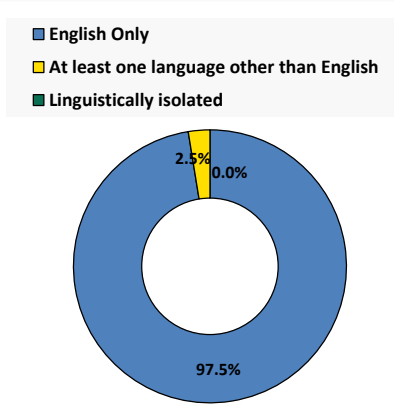
Age by Race and Ethnicity, 2010



Foreign Born, 2010



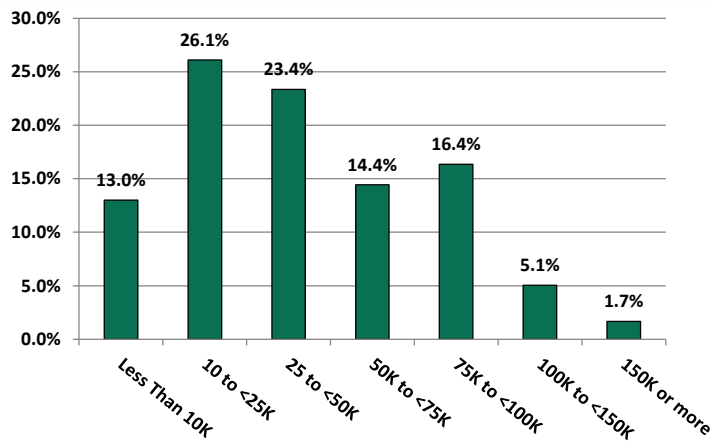
Household Language, 2010



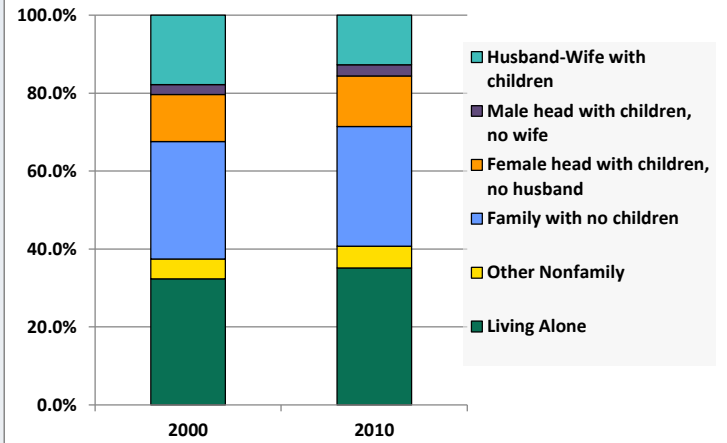
Demographic Profile

New Brighton Public Library

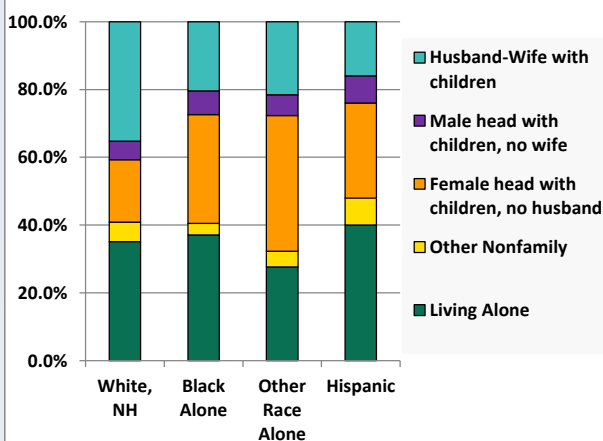
Household Income Distribution, 2008-2012



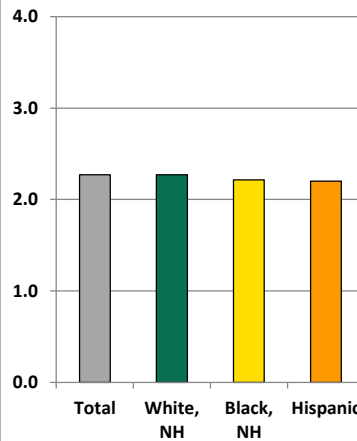
Household Type, 2000 and 2010



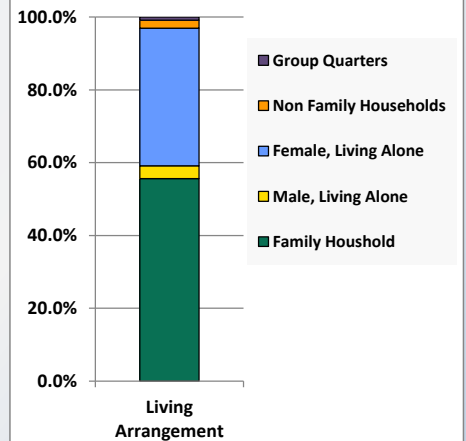
Household Type by Race/Ethnicity, 2010



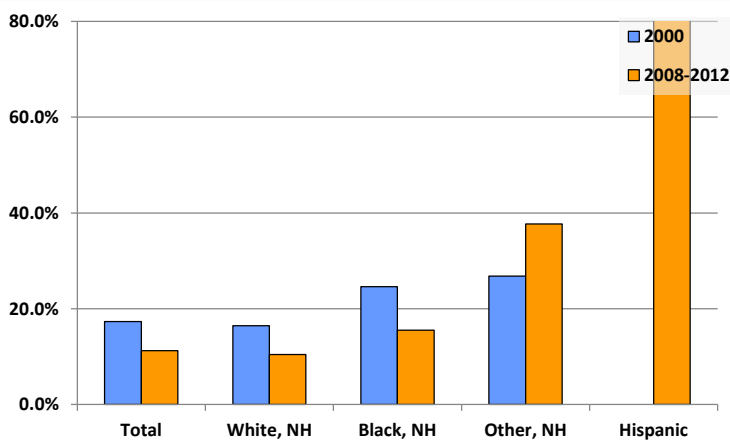
Average Household Size, 2010



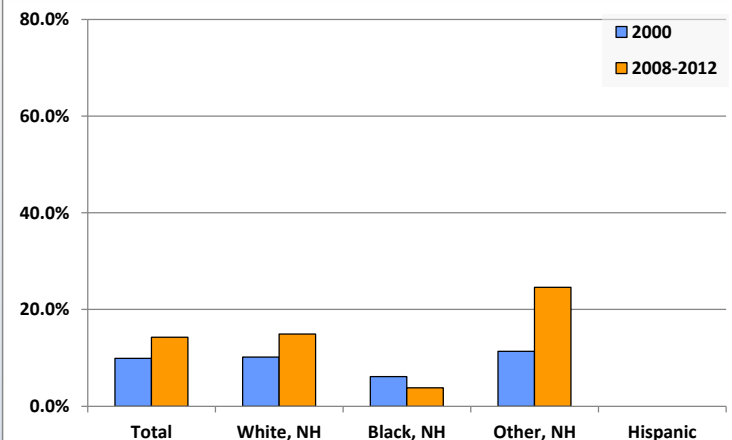
Living Arrangements 65+, 2008-2012



Percent of Adults that Did Not Complete High School



Percent of Adults Who Attained a Bachelor's Degree or Higher



Reference Data

New Brighton Public Library

	Total Population	White, Non- Hispanic	Black, Non- Hispanic	Other, Non- Hispanic	Detail for Other, Non-Hispanic					Hispanic or Latino
					AIAN	Asian	NHOPI	Some Other Race	Two or More Races	
A. Total Population										
2000 Total	6,641	5,709	701	198	14	13	0	16	155	33
2000 pct of Total	100.0%	86.0%	10.6%	3.0%	0.2%	0.2%	0.0%	0.2%	2.3%	0.5%
2010 Total	6,025	4,986	643	305	15	9	0	4	277	91
2010 pct of Total	100.0%	82.8%	10.7%	5.1%	0.2%	0.1%	0.0%	0.1%	4.6%	1.5%
B. Population by Major Age Groups by Race and Ethnicity										
2000										
0-19	1,903	1,512	252	125	0	3	0	14	108	14
20-64	3,762	3,293	382	69	13	10	0	2	44	18
65+	976	904	67	4	1	0	0	0	3	1
85+	104	98	5	0	0	0	0	0	0	1
2010										
0-19	1,631	1,168	219	199	7	2	0	4	186	45
20-64	3,552	3,053	357	99	7	7	0	0	85	43
65+	842	765	67	7	1	0	0	0	6	3
85+	134	129	4	0	0	0	0	0	0	1
C. Age Mix for Each Racial and Ethnic Group										
2000										
0-19	28.7%	26.5%	35.9%	63.1%	0.0%	23.1%	0.0%	87.5%	69.7%	42.4%
20-64	56.6%	57.7%	54.5%	34.8%	92.9%	76.9%	0.0%	12.5%	28.4%	54.5%
65+	14.7%	15.8%	9.6%	2.0%	7.1%	0.0%	0.0%	0.0%	1.9%	3.0%
85+	1.6%	1.7%	0.7%	0.0%	0.0%	0.0%	0.0%	0.0%	0.0%	3.0%
2010										
0-19	27.1%	23.4%	34.1%	65.2%	46.7%	22.2%	0.0%	100.0%	67.1%	49.5%
20-64	59.0%	61.2%	55.5%	32.5%	46.7%	77.8%	0.0%	0.0%	30.7%	47.3%
65+	14.0%	15.3%	10.4%	2.3%	6.7%	0.0%	0.0%	0.0%	2.2%	3.3%
85+	2.2%	2.6%	0.6%	0.0%	0.0%	0.0%	0.0%	0.0%	0.0%	1.1%
D. Racial and Ethnic Composition of Each Age Group										
2000										
0-19	100.0%	79.5%	13.2%	6.6%	0.0%	0.2%	0.0%	0.7%	5.7%	0.7%
20-64	100.0%	87.5%	10.2%	1.8%	0.3%	0.3%	0.0%	0.1%	1.2%	0.5%
65+	100.0%	92.6%	6.9%	0.4%	0.1%	0.0%	0.0%	0.0%	0.3%	0.1%
85+	100.0%	94.2%	4.8%	0.0%	0.0%	0.0%	0.0%	0.0%	0.0%	1.0%
2010										
0-19	100.0%	71.6%	13.4%	12.2%	0.4%	0.1%	0.0%	0.2%	11.4%	2.8%
20-64	100.0%	86.0%	10.1%	2.8%	0.2%	0.2%	0.0%	0.0%	2.4%	1.2%
65+	100.0%	90.9%	8.0%	0.8%	0.1%	0.0%	0.0%	0.0%	0.7%	0.4%
85+	100.0%	96.3%	3.0%	0.0%	0.0%	0.0%	0.0%	0.0%	0.0%	0.7%
E. Population Growth										
2000-2010, Change										
0-19	-272	-344	-33	74	7	-1	0	-10	78	31
20-64	-210	-240	-25	30	-6	-3	0	-2	41	25
65+	-134	-139	0	3	0	0	0	0	3	2
85+	30	31	-1	0	0	0	0	0	0	0
Total	-616	-723	-58	107	1	-4	0	-12	122	58
2000-2010, Pct Change										
0-19	-14.3%	-22.8%	-13.1%	59.2%	0.0%	-33.3%	0.0%	-71.4%	72.2%	221.4%
20-64	-5.6%	-7.3%	-6.5%	43.5%	-46.2%	-30.0%	0.0%	-100.0%	93.2%	138.9%
65+	-13.7%	-15.4%	0.0%	75.0%	0.0%	0.0%	0.0%	0.0%	100.0%	200.0%
85+	28.8%	31.6%	-20.0%	0.0%	0.0%	0.0%	0.0%	0.0%	0.0%	0.0%
Total	-9.3%	-12.7%	-8.3%	54.0%	7.1%	-30.8%	0.0%	-75.0%	78.7%	175.8%

Source: Decennial Census 2010, 2000, American Community Survey 2008-2012

Prepared for the Pennsylvania State Library by The Pennsylvania State Data Center, 9/2014

Reference Data

New Brighton Public Library

					Detail for Other, Non-Hispanic					Hispanic or Latino
	Total Population	White, Non-Hispanic	Black, Non-Hispanic	Other, Non-Hispanic	AIAN	Asian	NHOPI	Some Other	Two or More	
								Race	Races	
F. Population by Library-Defined Age Groups, 2010										
0-5	484	306	78	83	2	0	0	3	78	17
6-10	397	298	47	42	1	2	0	0	39	10
11-13	227	161	31	31	1	0	0	1	29	4
14-18	437	337	49	39	2	0	0	0	37	12
19-32	1,092	901	124	47	4	2	0	0	41	20
33-45	1,012	863	101	35	4	3	0	0	28	13
46-64	1,534	1,355	146	21	0	2	0	0	19	12
65-84	708	636	63	7	1	0	0	0	6	2
85+	134	129	4	0	0	0	0	0	0	1
Total	6,025	4,986	643	305	15	9	0	4	277	91
G. Population by 5-Year Age Cohorts, 2010										
0-4	407	258	64	70	1	0	0	2	67	15
5-9	404	296	49	48	2	2	0	1	43	11
10-14	392	287	50	50	2	0	0	1	47	5
15-19	428	327	56	31	2	0	0	0	29	14
20-24	394	314	47	24	2	0	0	0	22	9
25-29	415	344	50	14	0	1	0	0	13	7
30-34	340	293	28	13	3	2	0	0	8	6
35-39	390	337	39	10	1	2	0	0	7	4
40-44	390	335	37	15	1	0	0	0	14	3
45-49	443	390	43	6	0	0	0	0	6	4
50-54	448	386	52	5	0	1	0	0	4	5
55-59	416	368	37	9	0	1	0	0	8	2
60-64	316	286	24	3	0	0	0	0	3	3
65-69	239	215	20	3	0	0	0	0	3	1
70-74	191	171	17	2	1	0	0	0	1	1
75-79	163	146	16	1	0	0	0	0	1	0
80-84	115	104	10	1	0	0	0	0	1	0
85-89	88	83	4	0	0	0	0	0	0	1
90-94	41	41	0	0	0	0	0	0	0	0
95-99	4	4	0	0	0	0	0	0	0	0
100+	1	1	0	0	0	0	0	0	0	0
Total	6,025	4,986	643	305	15	9	0	4	277	91

Source: Decennial Census 2010, 2000, American Community Survey 2008-2012

Prepared for the Pennsylvania State Library by The Pennsylvania State Data Center, 9/2014

Reference Data

New Brighton Public Library

H. Income Distribution, 2008-2012

Range (in thousands)	Households	Pct of Total
<\$10K	327	13.0%
\$10K to <\$25K	656	26.1%
\$25K to <\$50K	587	23.4%
\$50K to <\$75K	363	14.4%
\$75K to <\$100K	411	16.4%
\$100K to <\$150K	127	5.1%
\$150K+	42	1.7%

I. Household Type, 2010

Household Type	2000	2000pct	2010	2010pct
Total Households	2,740	100.0%	2,615	100.0%
Family Households	1,715	62.6%	1,550	59.3%
Husband-wife, no children w/children	488	17.8%	332	12.7%
Female head, no husband, w/ children	331	12.1%	339	13.0%
Male head, no wife, w/ children	70	2.6%	76	2.9%
Without children	826	30.1%	803	30.7%
Nonfamily households	1,025	37.4%	1,065	40.7%
Living alone	886	32.3%	919	35.1%
Other nonfamily	139	5.1%	146	5.6%

J. Household Type by Race and Ethnicity, 2008-2012

Household Type	White, NH	Black, NH	Other, NH	Hispanic
Total Households	2,269	259	65	25
Husband wife family	35.2%	20.5%	21.5%	16.0%
Family with male head, no wife	5.5%	6.9%	6.2%	8.0%
family with female head, no husband	18.4%	32.0%	40.0%	28.0%
Living alone	35.1%	37.1%	27.7%	40.0%
Other nonfamily	5.8%	3.5%	4.6%	8.0%

K. Poverty, 2008-2012

Families	Poverty	PA
All families	19.6%	9.1%
Families w/ related children	30.9%	15.3%
Female householder, no husband present	45.8%	28.8%
Female householder, no husband present, w/ related children	52.8%	39.2%
All people	21.6%	13.1%
Under 18 years	32.3%	18.4%
18 to 64 years	20.4%	12.3%
65 years and over	7.7%	8.4%

L. Educational Attainment by Race and Ethnicity, 2008-2012

Education Level	White, NH	Black	Other	Hispanic	Total
Population 25 years and over	3,609	290	61	12	3,960
Less than high school	10.5%	15.5%	38%	100.0%	11.3%
High school graduate (includes equivalency)	47.0%	22.4%	2%	0.0%	44.5%
Some college or associates degree	27.5%	58.3%	36%	0.0%	29.9%
Bachelors degree or higher	15.0%	3.8%	25%	0.0%	14.3%

M. Occupation, 2008-2012

Occupation	Estimate	Percent
Civilian population age 16 years and over	2,681	100.0%
Management, professional, and related occupations	617	23.0%
Service occupations	577	21.5%
Sales and office occupations	747	27.9%
Farming, fishing, and forestry occupations	0	0.0%
Construction, extraction, maintenance, and repair occupations	193	7.2%
Production, transportation, and material moving occupations	547	20.4%

N. Class of Worker, 2008-2012

Occupation	Estimate	Percent
Civilian population age 16 years and over	2,681	100.0%
Private, for profit, wage and salary employee	1,976	73.7%
Private, not for profit, wage and salary employee	309	11.5%
Private, for profit, wage and salary self-employed in own business	22	0.8%
Government workers	246	9.2%
Self-employed in own not incorporated business	90	3.4%
Unpaid family workers in family business	38	1.4%