

Demographic Profile New Florence Community Library

Population Growth: The total population of the New Florence Community Library service area increased by 1.4 percent over the past decade to 2,702; this growth rate was lower than the statewide rate of 3.4 percent.

Age and Sex: In 2010, the New Florence Community Library service area had a total population of 2,702 - 1,331 males (49.3 percent) and 1,371 females (50.7 percent). The age structure of the population in 2010 was as follows: 23.6 percent of the population was under 20 years old, 56.2 percent was 20 to 64 years old and 20.2 percent was 65 years or older.

Race and Ethnicity: For people reporting one race alone, not of Hispanic ethnicity, 97.7 percent were White; .3 percent were Black or African American; 1.0 percent were Other Race Alone.¹ A total of 26 or 1.0 percent of the population were Hispanic.²

Households: In 2010, there were 1,146 households in the New Florence Community Library service area. The average household size was 2.36 people. Families made up 68.6 percent of the households. This figure includes both families with (26.0 percent) and without (42.6 percent) children. Of families with children less than 18 years old, 17.5 percent were married-couple families, 5.8 percent were female householder families with no husband present, and the remaining (2.6 percent) were male-headed households with no wife present.

Education: The educational attainment of the population 25 years and over was lower in the New Florence Community Library service area than in Pennsylvania. During the period 2008-2012, 9.4 percent of residents had earned a Bachelor's degree or higher, compared with 27.0 percent statewide. A total of 268 or 13.8 percent had not completed high school, compared with 11.7 percent for the commonwealth as a whole.

Income and Poverty: Households with incomes of less than \$25,000 (32.4 percent) made up the largest percent of households in the New Florence Community Library service area in 2008-2012. For comparison, 23.6 percent of commonwealth households were in this range during the period.

In 2008-2012, the overall poverty rate for the New Florence Community Library service area was higher than Pennsylvania (15.9 percent compared to 13.1 percent). The poverty rate for the population under 18 years of age was 24.4 percent, compared with 16.0 percent of people 18 to 64 years and 5.9 percent for those aged 65 years and over. A total of 114 or 13.6 percent of all families had incomes below poverty level. In 2008-2012, 26.1 percent of families with related children and 43.4 percent of families with a female householder and no husband with related children present had incomes below the poverty level.

Class of Worker and Occupation: In 2008-2012, 88.3 percent of the workforce was private wage and salary workers; 7.5 percent were federal, state, or local government workers; and 4.2 percent were self-employed in their own (not incorporated) business.

The top occupation group for the civilian employed population 16 years and over in the New Florence Community Library service area in 2008-2012 was Sales and office (24.5 percent).

¹ Other race includes those who identified themselves as American Indian/Alaska Native, Asian, Native Hawaiian/Other Pacific Islander, Some Other Race and Two or More Races on the 2010 Census form.

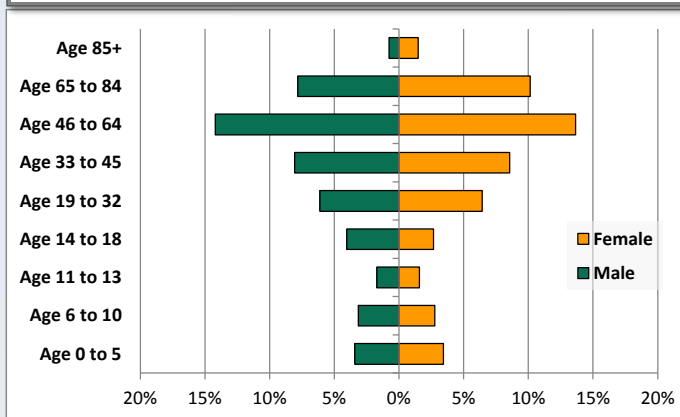
² People of Hispanic origin may be of any race.

Demographic Profile

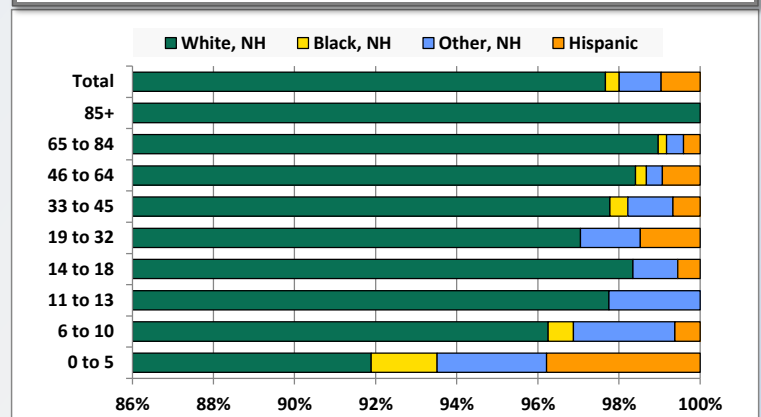
New Florence Community Library

Key Indicators		
	2000	2010
Population Growth		
Total Population	2,666	2,702
10-Year Growth	N/A	1.4%
Diversity		
White Alone, Non-Hispanic	98.5%	97.7%
Black Alone, Non-Hispanic	0.0%	0.3%
Other Race Alone, Non-Hispanic	0.8%	1.0%
Percent Hispanic	0.6%	1.0%
Aging		
Percent 65 Years and Over	19.5%	20.2%
Households		
Percent Married Couple with Own Children	19.7%	17.5%
Percent Living Alone	27.7%	27.5%

Population by Library-Defined Age Group, 2010



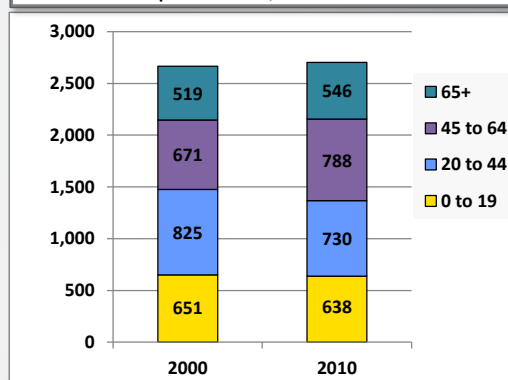
Race/Ethnicity by Library-Defined Age Group, 2010



Population Growth by Library-Defined Age Group, 2000 to 2010

Age Group	2010	Change	
		Numeric	Percent
Total	2,702	36	1.4%
85+	61	9	17.3%
65 to 84	485	18	3.9%
46 to 64	753	128	20.5%
33 to 45	449	-102	-18.5%
19 to 32	339	-13	-3.7%
14 to 18	181	11	6.5%
11 to 13	89	-6	-6.3%
6 to 10	160	-7	-4.2%
0 to 5	185	-2	-1.1%

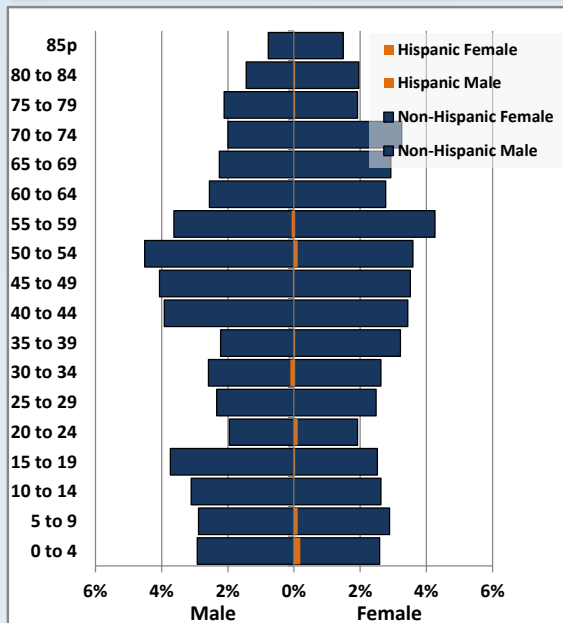
Population Total, 2000 and 2010



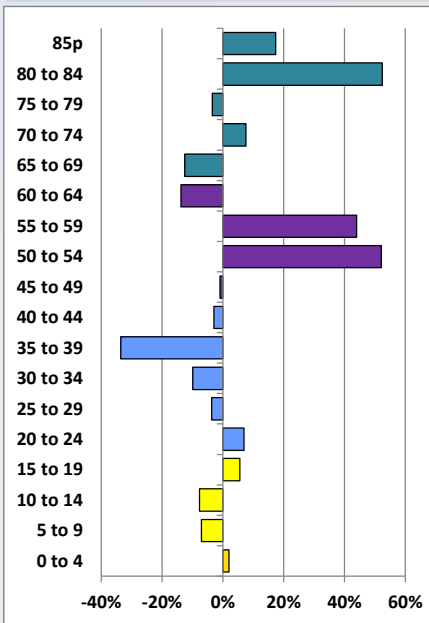
Demographic Profile

New Florence Community Library

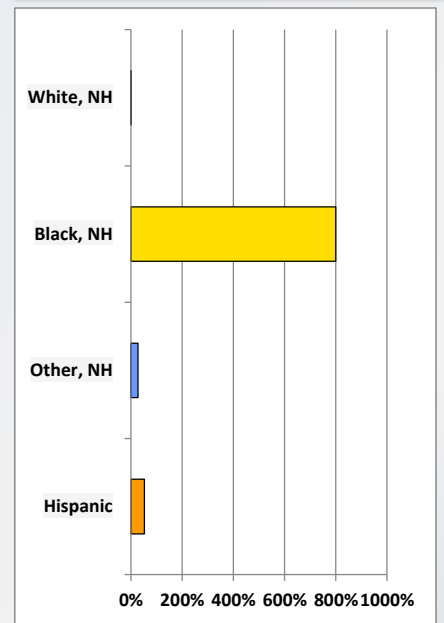
Population by 5-Year Age Cohorts



Pop Change by Age, 2000 to 2010

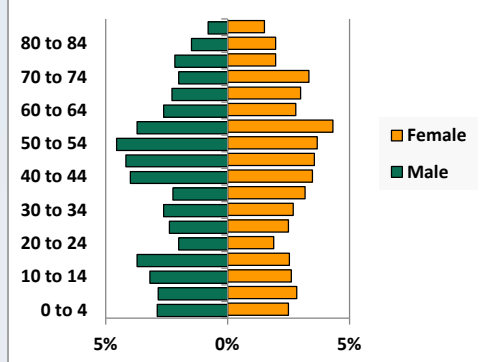


Pop Change by Race/Ethnicity, 2000 to 2010

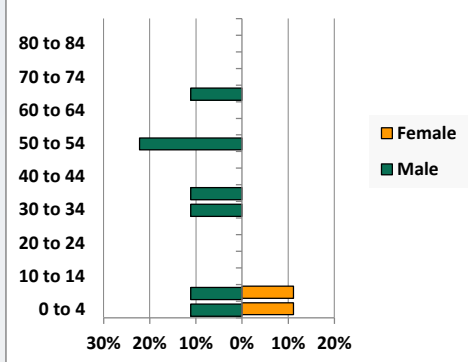


Population by Age, Race and Ethnicity 2010

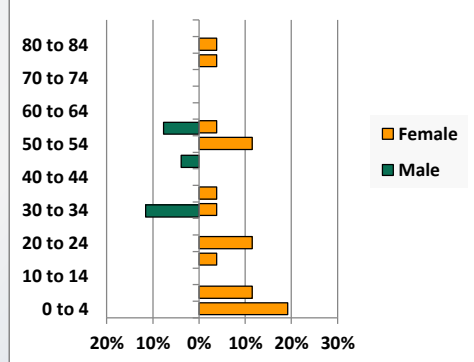
White, Not Hispanic



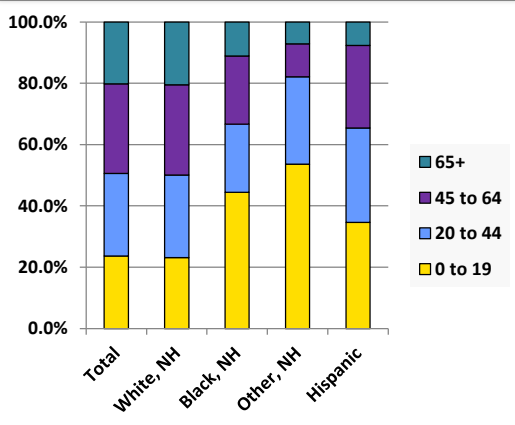
Black, Non-Hispanic



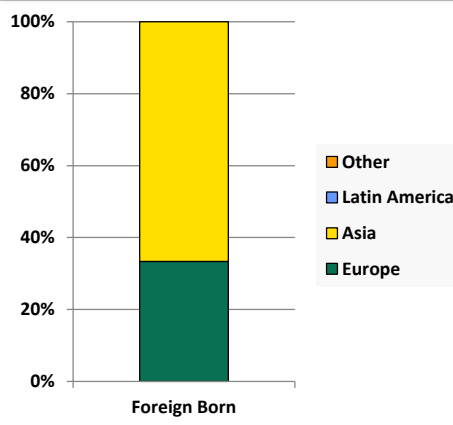
Hispanic



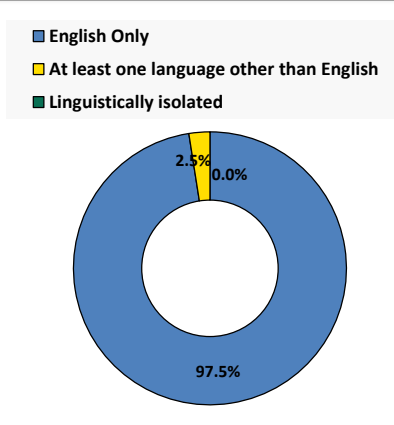
Age by Race and Ethnicity, 2010



Foreign Born, 2010



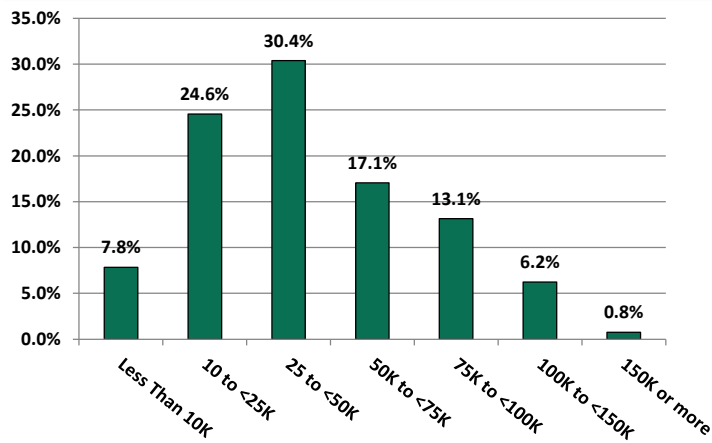
Household Language, 2010



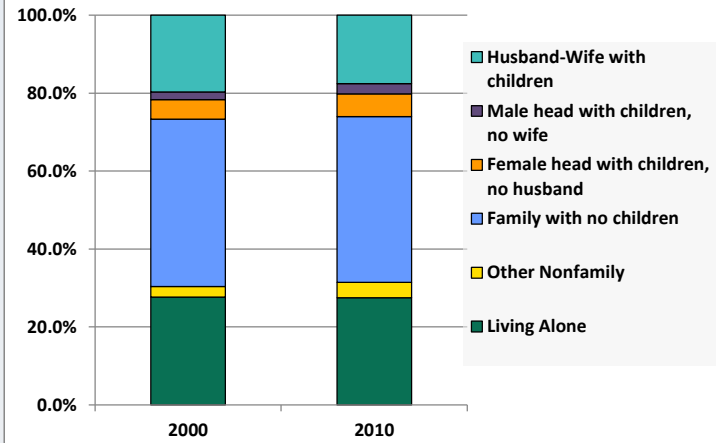
Demographic Profile

New Florence Community Library

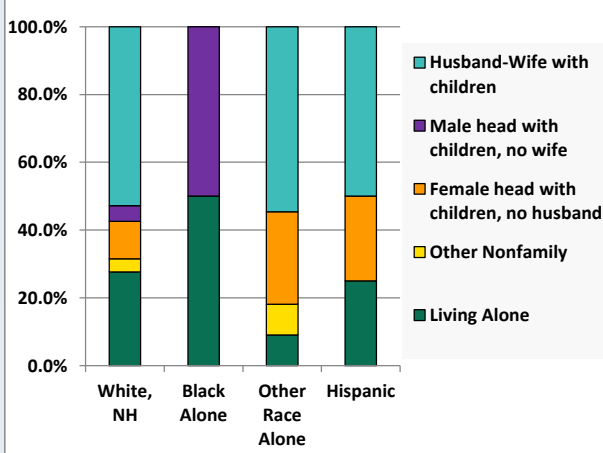
Household Income Distribution, 2008-2012



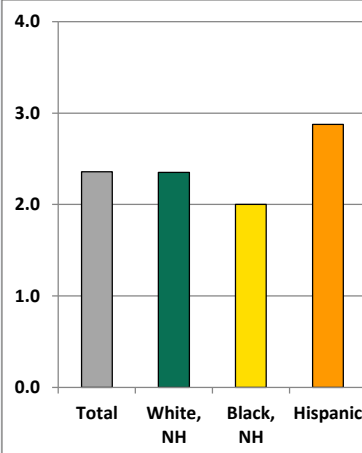
Household Type, 2000 and 2010



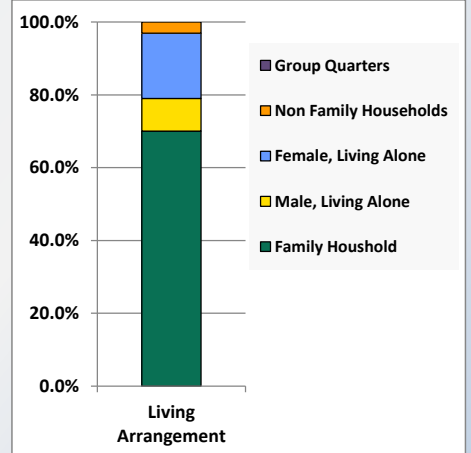
Household Type by Race/Ethnicity, 2010



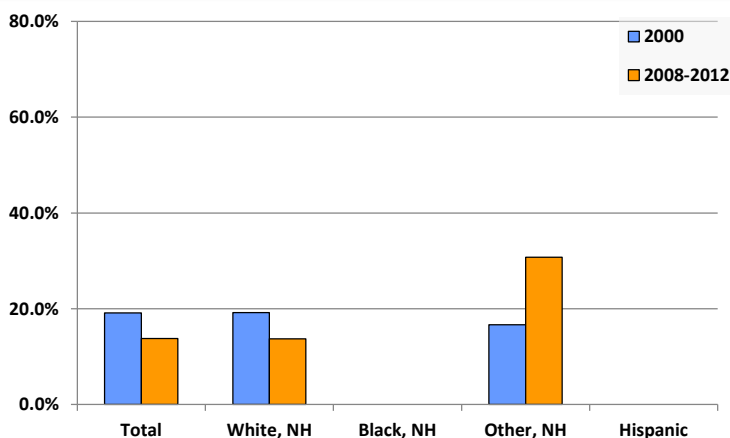
Average Household Size, 2010



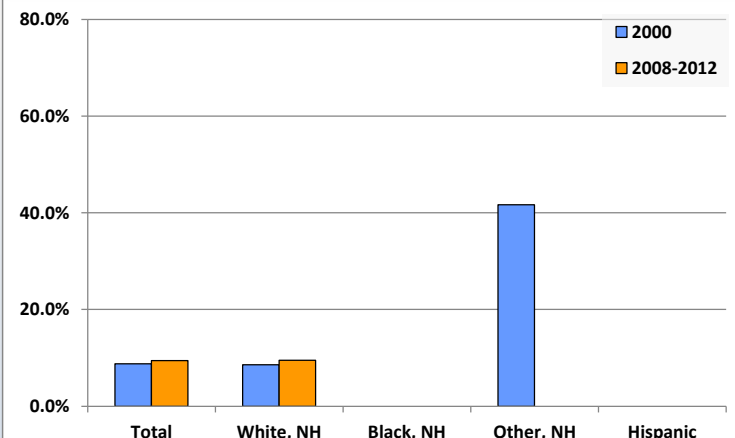
Living Arrangements 65+, 2008-2012



Percent of Adults that Did Not Complete High School



Percent of Adults Who Attained a Bachelor's Degree or Higher



Reference Data

New Florence Community Library

					Detail for Other, Non-Hispanic					
	Total Population	White, Non- Hispanic	Black, Non- Hispanic	Other, Non- Hispanic	AIAN	Asian	NHOPI	Some Other	Two or More	Hispanic or
								Race	Races	Latino
A. Total Population										
2000 Total	2,666	2,626	1	22	1	0	0	0	21	17
2000 pct of Total	100.0%	98.5%	0.0%	0.8%	0.0%	0.0%	0.0%	0.0%	0.8%	0.6%
2010 Total	2,702	2,639	9	28	4	8	0	0	16	26
2010 pct of Total	100.0%	97.7%	0.3%	1.0%	0.1%	0.3%	0.0%	0.0%	0.6%	1.0%
B. Population by Major Age Groups by Race and Ethnicity										
2000										
0-19	651	634	1	7	0	0	0	0	7	9
20-64	1,496	1,478	0	13	1	0	0	0	12	5
65+	519	514	0	2	0	0	0	0	2	3
85+	52	52	0	0	0	0	0	0	0	0
2010										
0-19	638	610	4	15	2	3	0	0	10	9
20-64	1,518	1,488	4	11	2	4	0	0	5	15
65+	546	541	1	2	0	1	0	0	1	2
85+	61	61	0	0	0	0	0	0	0	0
C. Age Mix for Each Racial and Ethnic Group										
2000										
0-19	24.4%	24.1%	100.0%	31.8%	0.0%	0.0%	0.0%	0.0%	33.3%	52.9%
20-64	56.1%	56.3%	0.0%	59.1%	100.0%	0.0%	0.0%	0.0%	57.1%	29.4%
65+	19.5%	19.6%	0.0%	9.1%	0.0%	0.0%	0.0%	0.0%	9.5%	17.6%
85+	2.0%	2.0%	0.0%	0.0%	0.0%	0.0%	0.0%	0.0%	0.0%	0.0%
2010										
0-19	23.6%	23.1%	44.4%	53.6%	50.0%	37.5%	0.0%	0.0%	62.5%	34.6%
20-64	56.2%	56.4%	44.4%	39.3%	50.0%	50.0%	0.0%	0.0%	31.3%	57.7%
65+	20.2%	20.5%	11.1%	7.1%	0.0%	12.5%	0.0%	0.0%	6.3%	7.7%
85+	2.3%	2.3%	0.0%	0.0%	0.0%	0.0%	0.0%	0.0%	0.0%	0.0%
D. Racial and Ethnic Composition of Each Age Group										
2000										
0-19	100.0%	97.4%	0.2%	1.1%	0.0%	0.0%	0.0%	0.0%	1.1%	1.4%
20-64	100.0%	98.8%	0.0%	0.9%	0.1%	0.0%	0.0%	0.0%	0.8%	0.3%
65+	100.0%	99.0%	0.0%	0.4%	0.0%	0.0%	0.0%	0.0%	0.4%	0.6%
85+	100.0%	100.0%	0.0%	0.0%	0.0%	0.0%	0.0%	0.0%	0.0%	0.0%
2010										
0-19	100.0%	95.6%	0.6%	2.4%	0.3%	0.5%	0.0%	0.0%	1.6%	1.4%
20-64	100.0%	98.0%	0.3%	0.7%	0.1%	0.3%	0.0%	0.0%	0.3%	1.0%
65+	100.0%	99.1%	0.2%	0.4%	0.0%	0.2%	0.0%	0.0%	0.2%	0.4%
85+	100.0%	100.0%	0.0%	0.0%	0.0%	0.0%	0.0%	0.0%	0.0%	0.0%
E. Population Growth										
2000-2010, Change										
0-19	-13	-24	3	8	2	3	0	0	3	0
20-64	22	10	4	-2	1	4	0	0	-7	10
65+	27	27	1	0	0	1	0	0	-1	-1
85+	9	9	0	0	0	0	0	0	0	0
Total	36	13	8	6	3	8	0	0	-5	9
2000-2010, Pct Change										
0-19	-2.0%	-3.8%	300.0%	114.3%	0.0%	0.0%	0.0%	0.0%	42.9%	0.0%
20-64	1.5%	0.7%	0.0%	-15.4%	100.0%	0.0%	0.0%	0.0%	-58.3%	200.0%
65+	5.2%	5.3%	0.0%	0.0%	0.0%	0.0%	0.0%	0.0%	-50.0%	-33.3%
85+	17.3%	17.3%	0.0%	0.0%	0.0%	0.0%	0.0%	0.0%	0.0%	0.0%
Total	1.4%	0.5%	800.0%	27.3%	300.0%	0.0%	0.0%	0.0%	-23.8%	52.9%

Source: Decennial Census 2010, 2000, American Community Survey 2008-2012

Prepared for the Pennsylvania State Library by The Pennsylvania State Data Center, 9/2014

Reference Data

New Florence Community Library

	Total Population	White, Non- Hispanic	Black, Non- Hispanic	Other, Non- Hispanic	Detail for Other, Non-Hispanic					Hispanic or Latino
					AIAN	Asian	NHOPI	Some Other	Two or More	
								Race	Races	
F. Population by Library-Defined Age Groups, 2010										
0-5	185	170	3	5	0	0	0	0	5	7
6-10	160	154	1	4	0	2	0	0	2	1
11-13	89	87	0	2	0	1	0	0	1	0
14-18	181	178	0	2	2	0	0	0	0	1
19-32	339	329	0	5	0	1	0	0	4	5
33-45	449	439	2	5	1	3	0	0	1	3
46-64	753	741	2	3	1	0	0	0	2	7
65-84	485	480	1	2	0	1	0	0	1	2
85+	61	61	0	0	0	0	0	0	0	0
Total	2,702	2,639	9	28	4	8	0	0	16	26
G. Population by 5-Year Age Cohorts, 2010										
0-4	154	142	2	5	0	0	0	0	5	5
5-9	159	150	2	4	0	2	0	0	2	3
10-14	155	153	0	2	0	1	0	0	1	0
15-19	170	165	0	4	2	0	0	0	2	1
20-24	108	103	0	2	0	0	0	0	2	3
25-29	130	129	0	1	0	1	0	0	0	0
30-34	145	140	1	0	0	0	0	0	0	4
35-39	148	143	1	3	0	2	0	0	1	1
40-44	199	197	0	2	1	1	0	0	0	0
45-49	206	204	0	1	0	0	0	0	1	1
50-54	222	217	2	0	0	0	0	0	0	3
55-59	216	212	0	1	0	0	0	0	1	3
60-64	144	143	0	1	1	0	0	0	0	0
65-69	140	139	1	0	0	0	0	0	0	0
70-74	142	141	0	1	0	0	0	0	1	0
75-79	110	109	0	0	0	0	0	0	0	1
80-84	93	91	0	1	0	1	0	0	0	1
85-89	48	48	0	0	0	0	0	0	0	0
90-94	8	8	0	0	0	0	0	0	0	0
95-99	5	5	0	0	0	0	0	0	0	0
100+	0	0	0	0	0	0	0	0	0	0
Total	2,702	2,639	9	28	4	8	0	0	16	26

Source: Decennial Census 2010, 2000, American Community Survey 2008-2012
 Prepared for the Pennsylvania State Library by The Pennsylvania State Data Center, 9/2014

Reference Data

New Florence Community Library

H. Income Distribution, 2008-2012

Range (in thousands)	Households	Pct of Total
<\$10K	92	7.8%
\$10K to <\$25K	288	24.6%
\$25K to <\$50K	356	30.4%
\$50K to <\$75K	200	17.1%
\$75K to <\$100K	154	13.1%
\$100K to <\$150K	73	6.2%
\$150K+	9	0.8%

I. Household Type, 2010

Household Type	2000	2000pct	2010	2010pct
Total Households	1,098	100.0%	1,146	100.0%
Family Households	764	69.6%	786	68.6%
Husband-wife, no children w/children	216	19.7%	201	17.5%
Female head, no husband, w/ children	55	5.0%	67	5.8%
Male head, no wife, w/ children	22	2.0%	30	2.6%
Without children	471	42.9%	488	42.6%
Nonfamily households	334	30.4%	360	31.4%
Living alone	304	27.7%	315	27.5%
Other nonfamily	30	2.7%	45	3.9%

J. Household Type by Race and Ethnicity, 2008-2012

Household Type	White, NH	Black, NH	Other, NH	Hispanic
Total Households	1,128	2	11	8
Husband wife family	52.7%	0.0%	54.5%	50.0%
Family with male head, no wife	4.7%	50.0%	0.0%	0.0%
family with female head, no husband	11.0%	0.0%	27.3%	25.0%
Living alone	27.7%	50.0%	9.1%	25.0%
Other nonfamily	3.9%	0.0%	9.1%	0.0%

K. Poverty, 2008-2012

Families	Poverty	PA
All families	13.6%	9.1%
Families w/ related children	26.1%	15.3%
Female householder, no husband present	32.6%	28.8%
Female householder, no husband present, w/ related children	43.4%	39.2%
All people	15.9%	13.1%
Under 18 years	24.4%	18.4%
18 to 64 years	16.0%	12.3%
65 years and over	5.9%	8.4%

L. Educational Attainment by Race and Ethnicity, 2008-2012

Education Level	White, NH	Black	Other	Hispanic	Total
Population 25 years and over	1,925	3	13	4	1,941
Less than high school	13.7%	0.0%	31%	0.0%	13.8%
High school graduate (includes equivalency)	54.1%	0.0%	0%	0.0%	53.6%
Some college or associates degree	22.7%	100.0%	69%	100.0%	23.1%
Bachelors degree or higher	9.5%	0.0%	0%	0.0%	9.4%

M. Occupation, 2008-2012

Occupation	Estimate	Percent
Civilian population age 16 years and over	1,116	100.0%
Management, professional, and related occupations	236	21.1%
Service occupations	220	19.7%
Sales and office occupations	273	24.5%
Farming, fishing, and forestry occupations	0	0.0%
Construction, extraction, maintenance, and repair occupations	155	13.9%
Production, transportation, and material moving occupations	232	20.8%

N. Class of Worker, 2008-2012

Occupation	Estimate	Percent
Civilian population age 16 years and over	1,116	100.0%
Private, for profit, wage and salary employee	865	77.5%
Private, not for profit, wage and salary employee	117	10.5%
Private, for profit, wage and salary self-employed in own business	3	0.3%
Government workers	84	7.5%
Self-employed in own not incorporated business	47	4.2%
Unpaid family workers in family business	0	0.0%